



# Villa Park High School

## Measure S : Phase 2 Scope

Design Development – Board of Education – August 13th, 2020





/ YOUR DESIGN TEAM



LPA



SAM



OZZIE



# PROCESS SUMMARY



New 2-story 18-classroom building (1200 sf cr)

Building 100/200 accessibility upgrades



Smart & efficient use of resources

Minimize number of portables

Secure campus perimeter

Usable outdoor space i.e. seating + shade

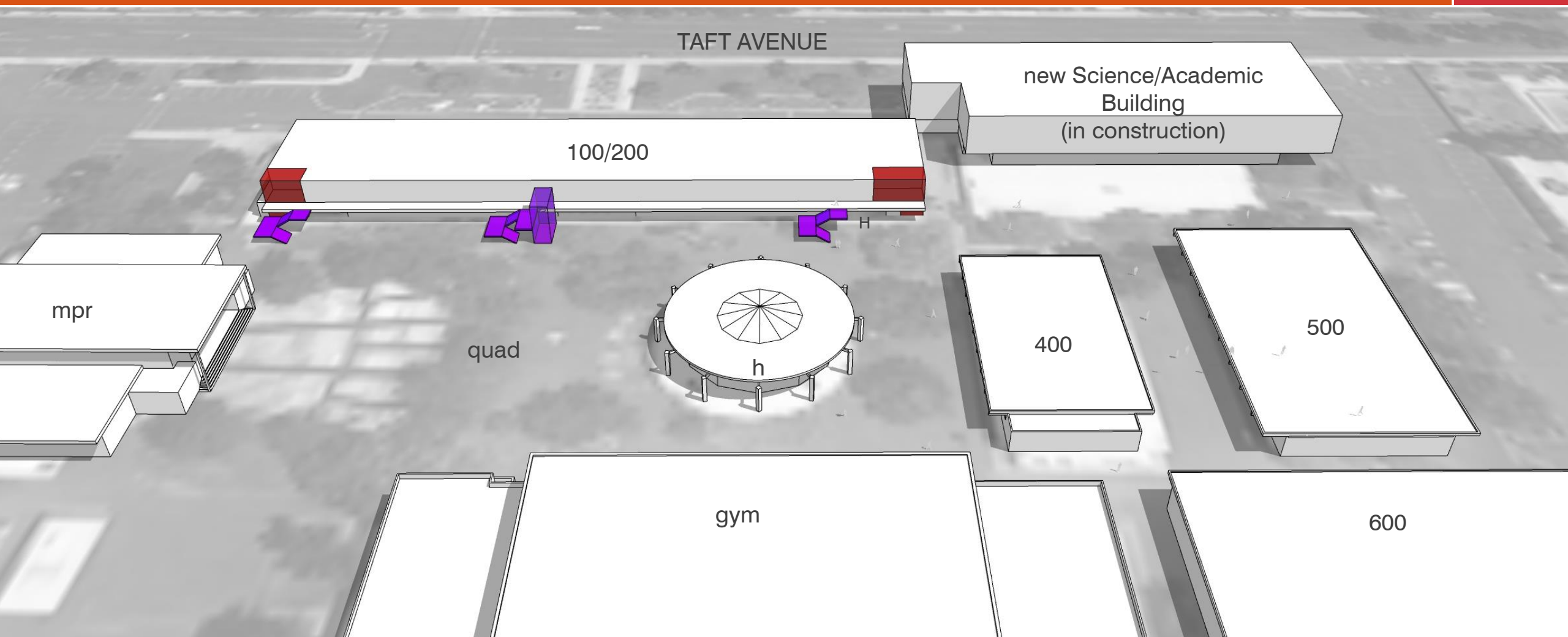




/ board approved phase 2 implementation



LPA



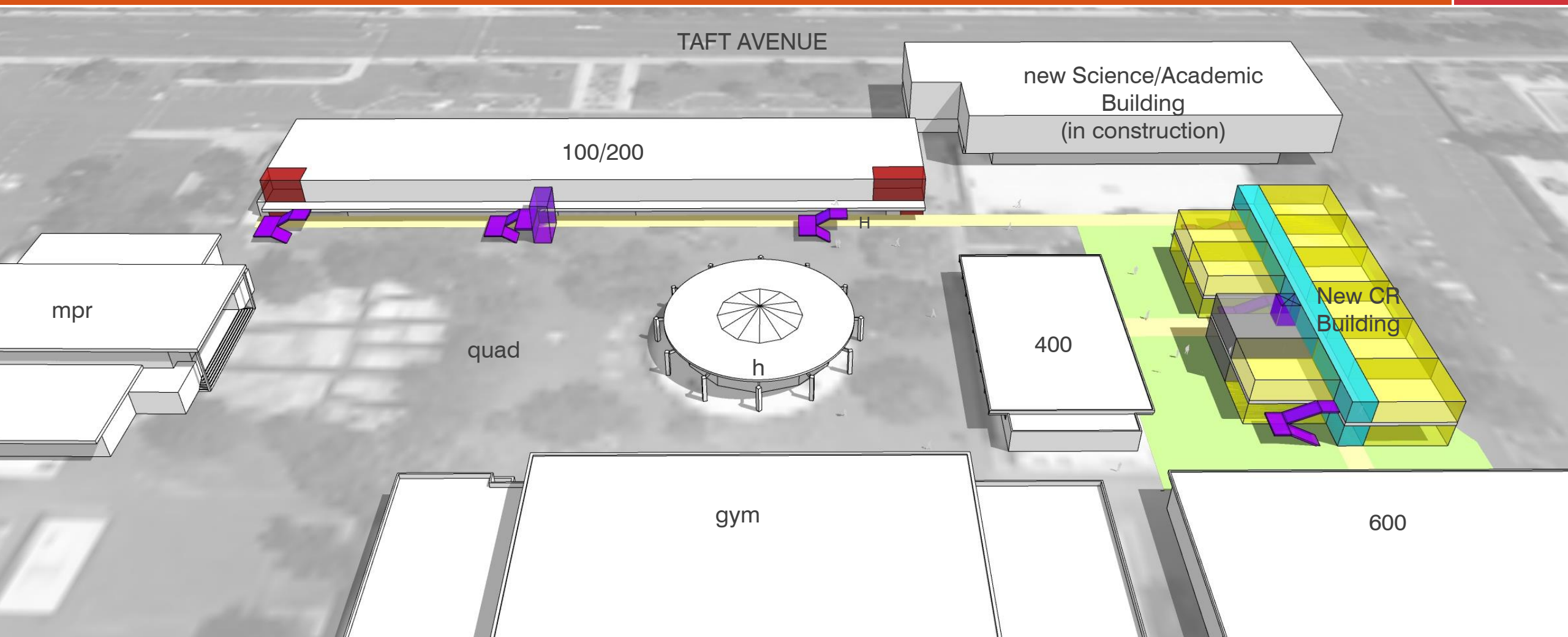




/ board approved phase 2 implementation



LPA





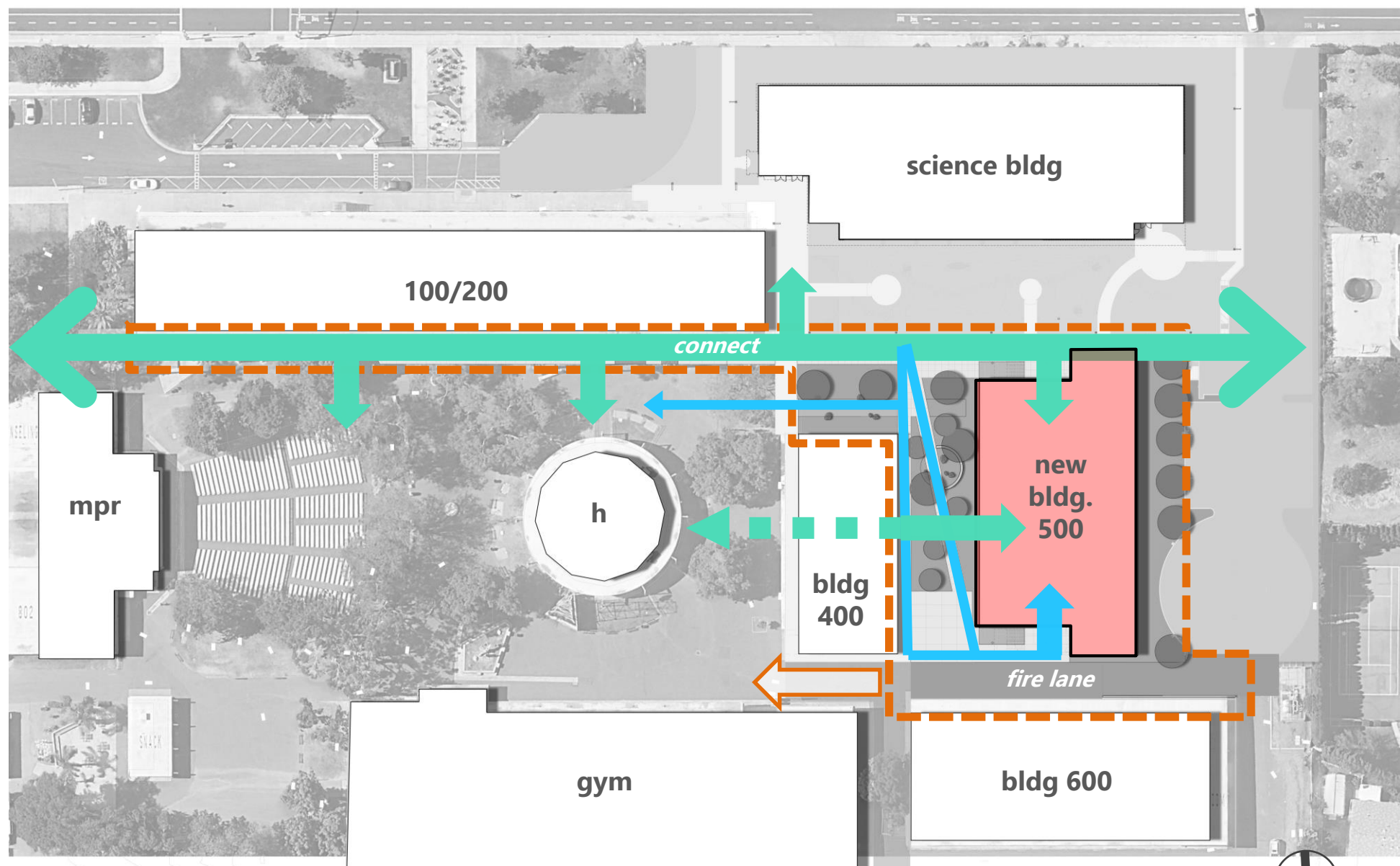
LPA

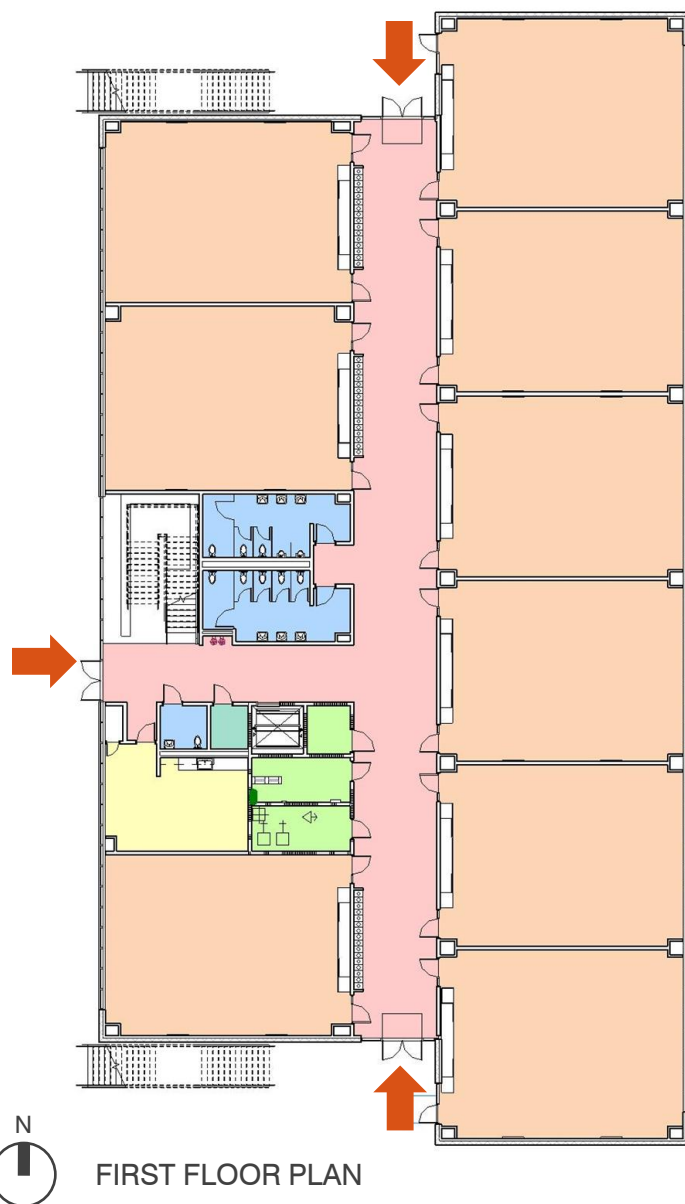
# DESIGN





- Direct access to quad/bldg. 100/200 along main pedestrian spine
- Possible future quad connection through bldg. 400
- Provides new fire lane for interior of campus



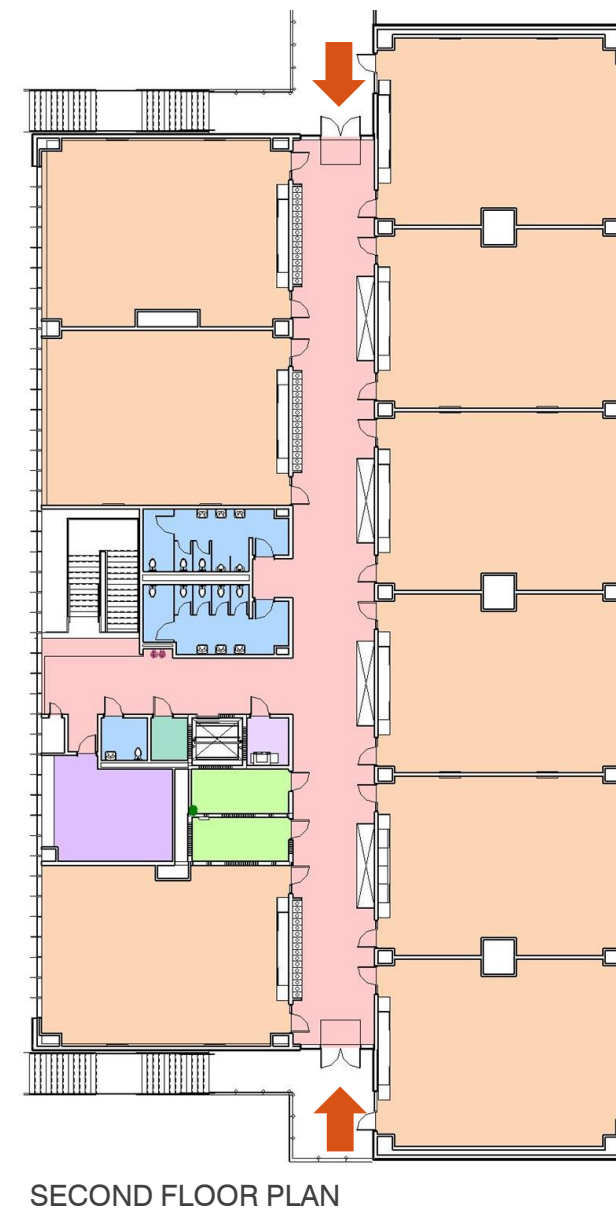


LOCKER COUNT:  
1<sup>ST</sup> FLOOR: 108  
2<sup>ND</sup> FLOOR: 108  
**TOTAL: 216**

SCIENCE CENTER  
LOCKER COUNT:  
**302 TOTAL**

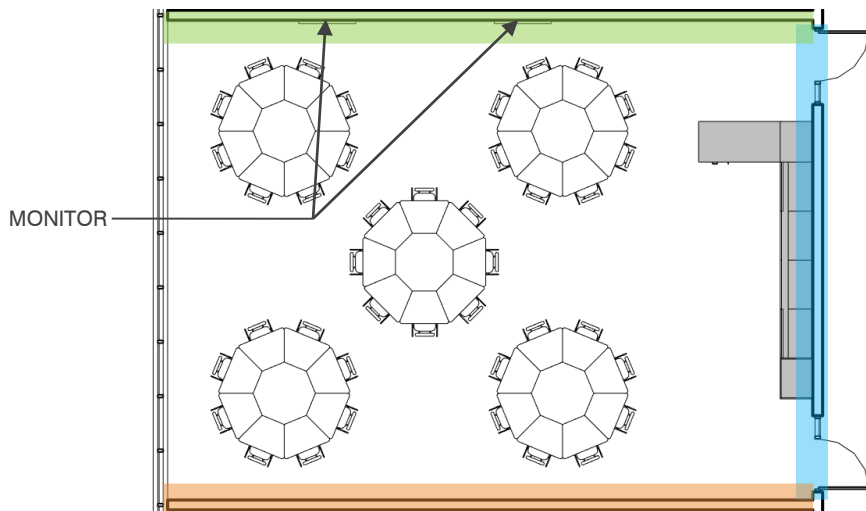
**LEGEND**

- CLASSROOM
- CORRIDOR
- CUSTODIAL
- ELECTRICAL
- RESTROOM
- STAFF LOUNGE

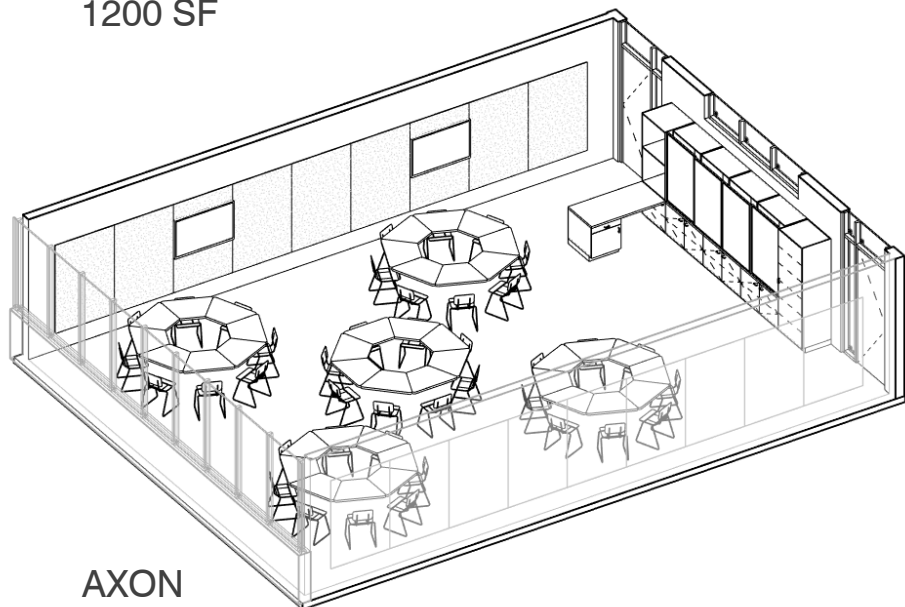


**LEGEND**

- CLASSROOM
- COPY/STORAGE
- CORRIDOR
- CUSTODIAL
- ELECTRICAL
- MEETING ROOM
- RESTROOM



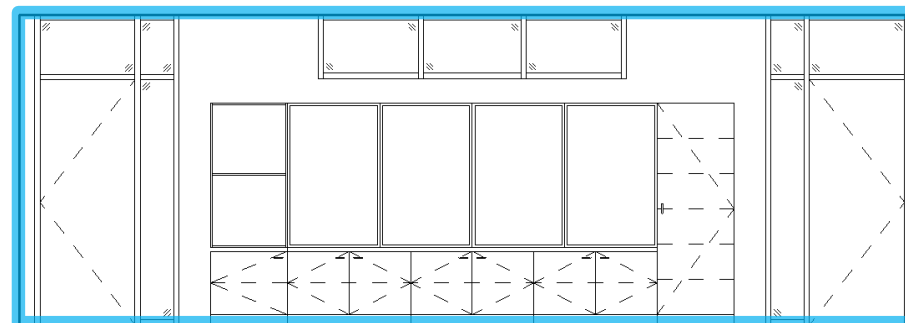
FLOOR PLAN  
1200 SF



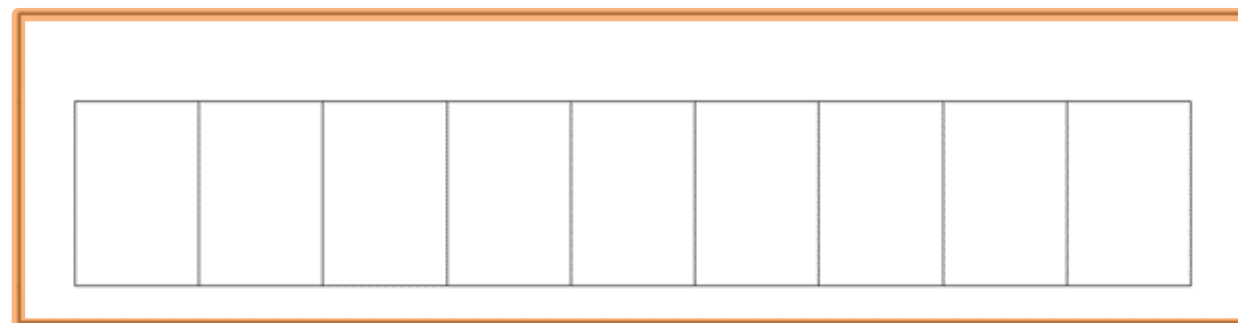
AXON



TACK AND DIGITAL MONITOR WALL

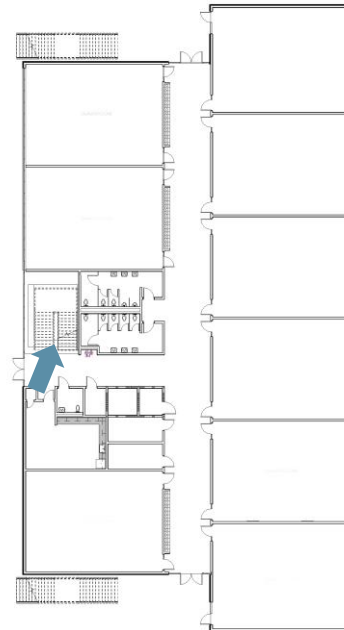


TEACHING WALL



WHITEBOARD WALL









/ phase 2 implementation – social spaces @ central stair



LPA











/ phase 2 implementation – quad view



LPA







/ phase 2 implementation – rain garden view



LPA





LPA

# BUILDING 100/200

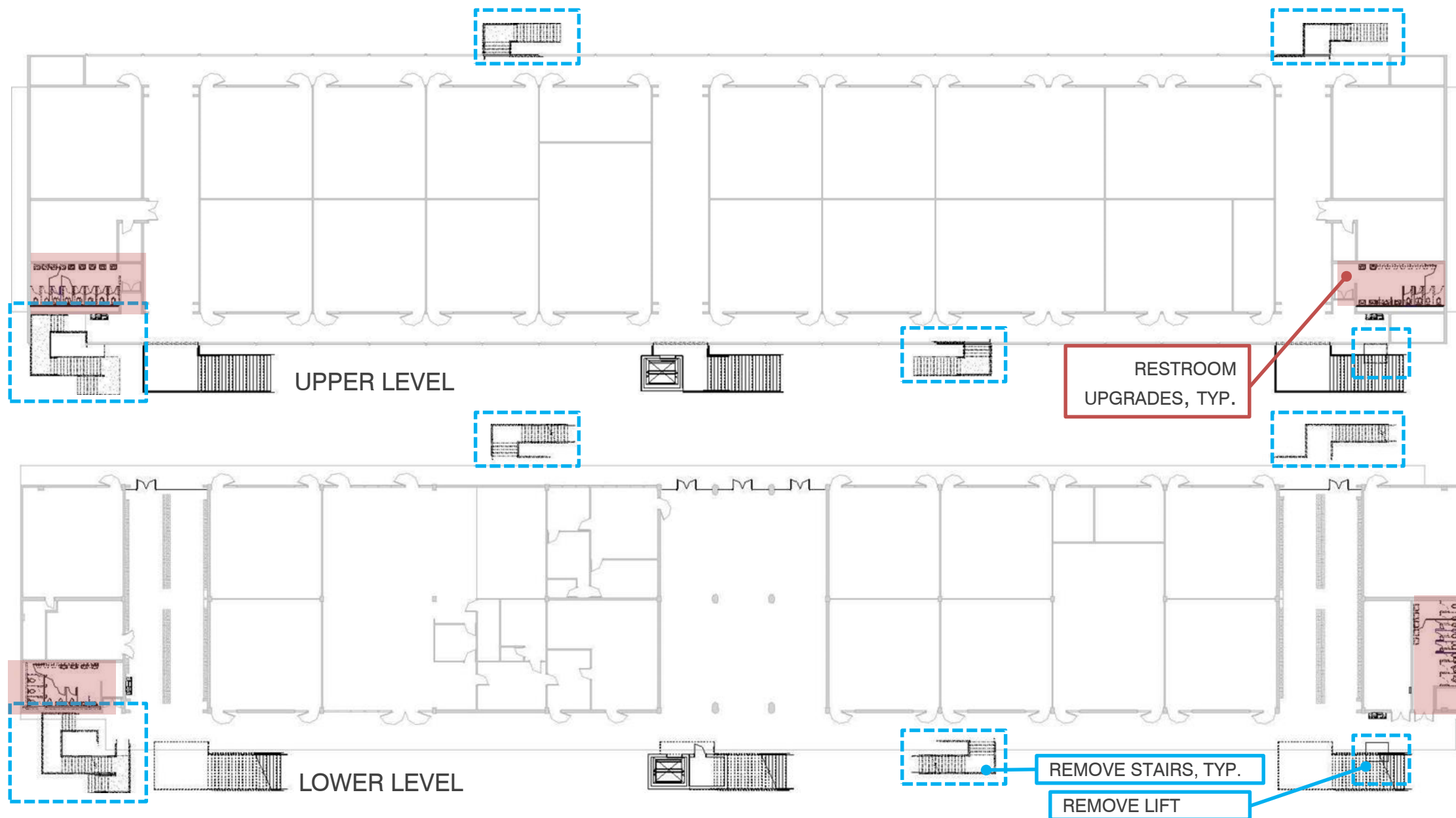




# / phase 2 implementation – building 100/200 – existing condition



LPA



Existing  
classroom:  
no work



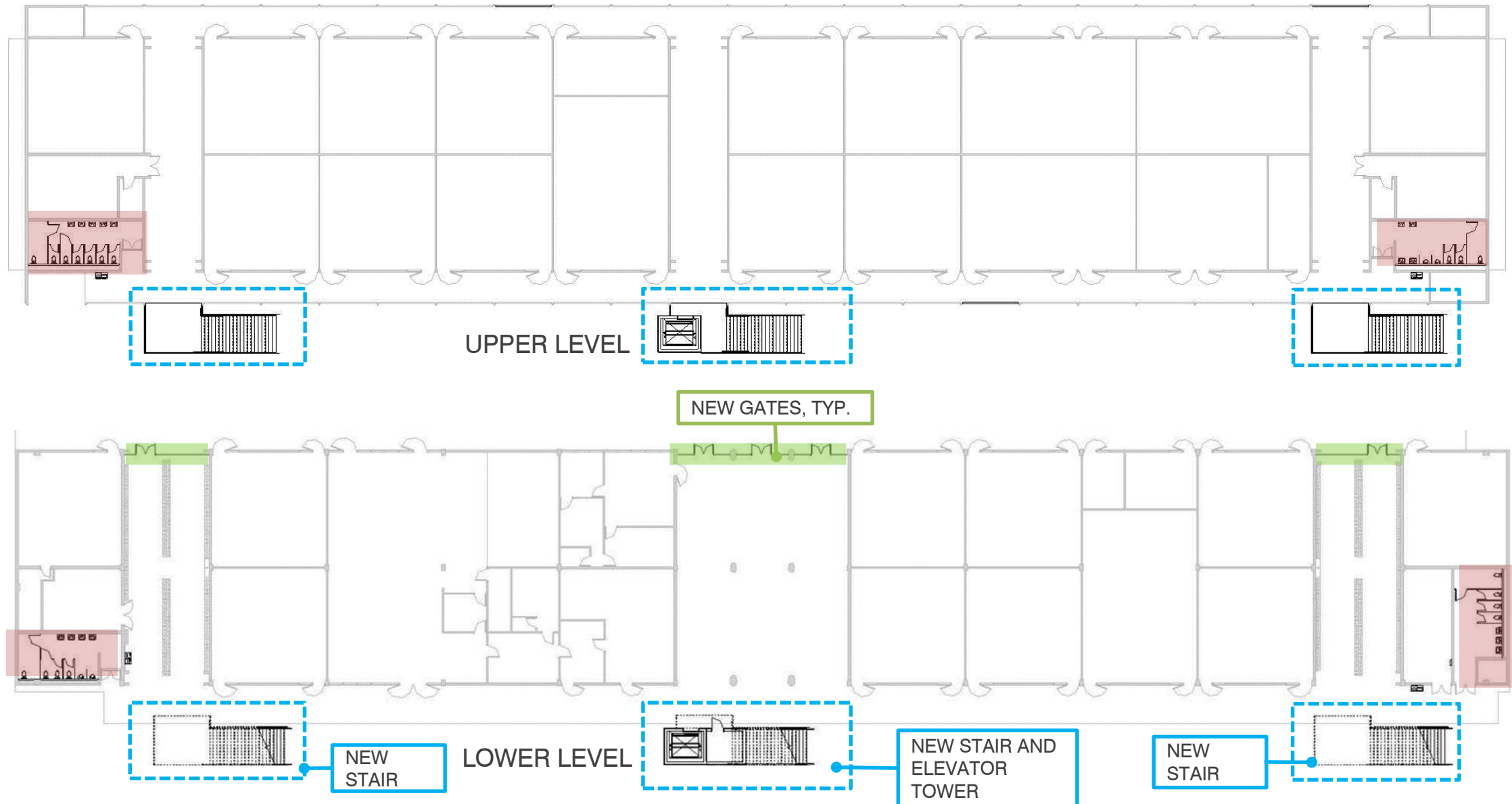
Restroom  
to be  
renovated

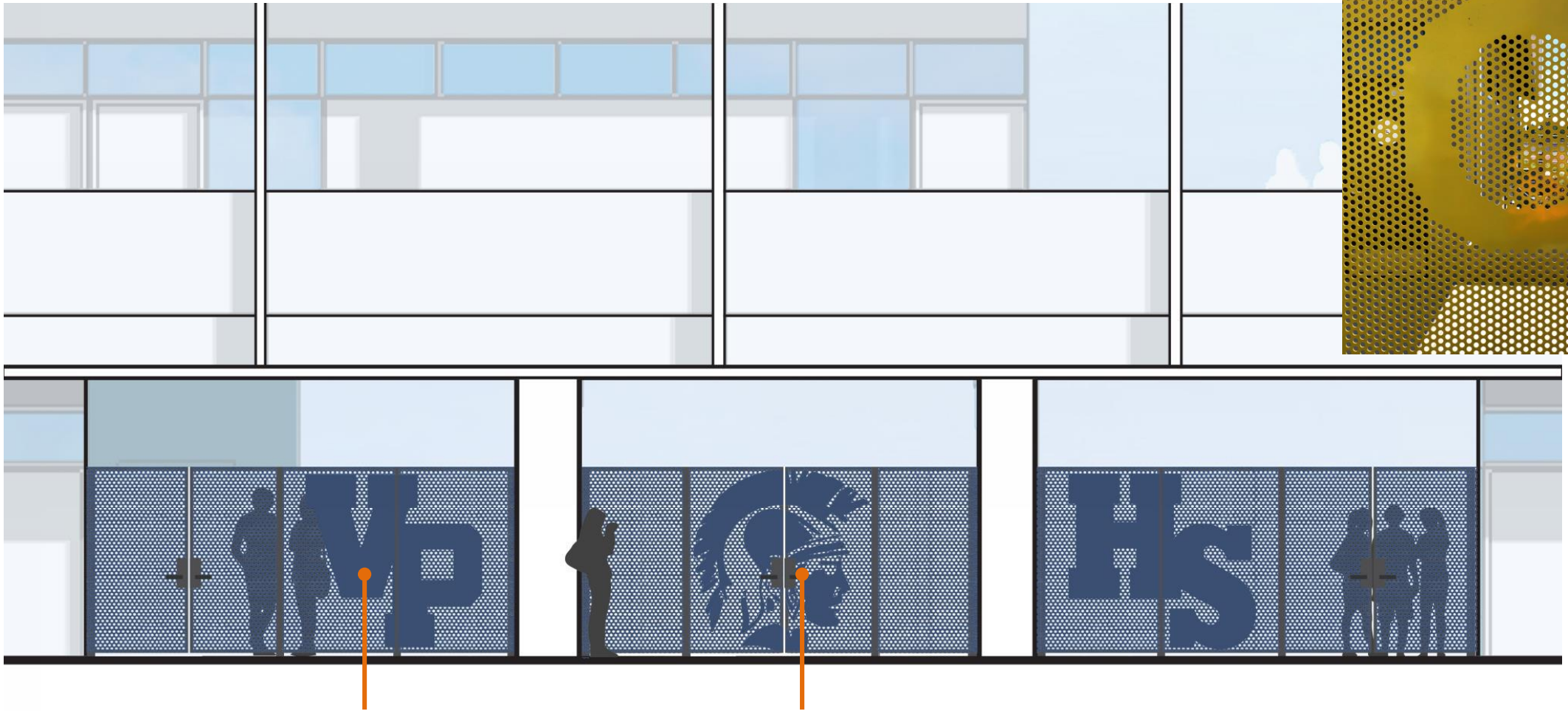


# / phase 2 implementation – building 100/200 – access upgrades



LPA









/ phase 2 implementation - building 100/200 – new elevator tower and stairs



LPA



CUSTOM GRAPHICS  
ON EXTERIOR  
POLYCARBONATE  
PANELS

PERFORATED  
METAL PANEL

SMOOTH  
PLASTER,  
PAINTED





/ phase 2 implementation - building 100/200 – new elevator tower and stairs



LPA



STEEL STAIR  
STRUCTURE

CONCRETE TREADS OVER  
STEEL PANS



## **SCHEDULE & COST ESTIMATE**

<b>Schematic Design Phase</b>	<b>April 27, 2020</b>
<b>Design Development Phase</b>	<b>July 13, 2020</b>
<b>Presentation to School Board</b>	<b>July 23, 2020</b>
<b>Construction Documents Phase</b>	<b>July 27, 2020 – Dec 2, 2020</b>
<b>Submittal to DSA</b>	<b>Dec 4, 2020</b>
<b>DSA Approval</b>	<b>Summer 2021</b>
<b>Construction</b>	<b>Fall 2021 – Winter 2022</b>
<b>Project Completion and Occupancy</b>	<b>Spring 2023</b>
<hr/>	
<b>Construction Cost Estimate</b>	<b>\$22,000,000</b>



# THANK YOU!



**LPA**

changing lives by design