



ORANGE UNIFIED SCHOOL DISTRICT

Measure S Bond Program

May 2021 Monthly Progress Report



PERIOD COVERED:

May 1-31, 2021

FISCAL YEAR

FY 2020-2021

PROGRESS REPORT NO.

PR-047-2021-047

PREPARED BY:

CUMMING
Building Value Through Expertise



TABLE OF CONTENTS

1.0 Executive Summary

- 1.1 Program Summary
- 1.2 Program Highlights/Key Milestones
- 1.3 Look Ahead (next 90 days)

2.0 Project Status Report

- Canyon HS – Science Center
- El Modena HS – Science Center
- Orange HS – Utility Infrastructure (Increment # 1)
- Orange HS – Science Center (Increment # 2)
- Villa Park HS – Interim Housing & Science Center

3.0 Financial Report

- 3.1 Project Cost Estimate
 - Budget vs Actuals with Vendor details per High School
- 3.2 Cash Flow Projections

4.0 Program Schedule Summary

- 4.1 Phase I Schedule Summary
- 4.2 Phase II Schedule Summary



1.0 EXECUTIVE SUMMARY

1.1 Program Summary

Division of State Architects (DSA) approval to establish design criteria completed as follows:

- (Completed) September 22, 2020 - El Modena HS Phase 1 Quad (04-119124)
- (Completed) October 24, 2019 - Villa Park HS New Parking and Drop Off (04-118521).
- (Completed) June 25, 2019 - Orange HS Custom Tensile Fabric Shade Structures (04-118351)
- (Completed) May 2, 2019 - Canyon HS Interim Modular Kitchen (04-118418)
- (Completed) January 31, 2019 - Canyon HS Science Center (04-117300)
- (Completed) November 6, 2018 - El Modena HS Science Center (04-117098)
- (Completed) August 16, 2018 - Villa Park HS Science Center (04-117022)
- (Completed) July 12, 2018 - Orange HS Science Center (Increment # 2) (04-116859)
- (Completed) April 10, 2018 - Orange HS Increment # 1 (Satellite Kitchen) (04-116673.2)
- (Completed) March 1, 2018 - Orange HS Increment #1 (Infrastructure Upgrades, Move Relocatable Buildings, Bus Drop-Off, Restroom Renovation Project) (04-116673.1)
- (Completed) February 7, 2018 - Villa Park HS Interim Housing (DSA Application #04-116788)

Construction started / completed, as follows:

- (Construction Start) January 7, 2019 – Villa Park HS (Interim Housing and Science Center)
 - **Completed** April 26, 2019 – Install ten (10) Portable Modular Buildings (04-116788)
 - **Completed** October 9, 2020 – Parking Lot Drop-Off (04-118521)
- (Construction Start) February 18, 2019 – Orange HS Science Center (Increment #2)
 - **Completed** April 8, 2020 – Custom Tensile Fabric Shade Structure (04-118351)
 - **Completed June 24, 2021 – Orange HS Science Center (04-116859)**
- (Construction Start) June 12, 2019 – Canyon HS Interim Housing & Science Center
 - **Completed** August 7, 2020 – Interim Modular Kitchen (04-118418)
- (Construction Start) April 2, 2019 – El Modena HS Science Center
- (Construction Start - June 15, 2018 – Orange HS Site Infrastructure (Increment #1)
 - **Completed** September 4, 2019 – Orange HS Site Infrastructure (Increment #1) (04-116673.1)

Division of State Architects (DSA) submission to establish design criteria as follows:

- (**Submitted**) March 3, 2021 – Villa Park HS Phase 2 (**04-119694**)
- (**Submitted**) April 23, 2021 – El Modena HS Phase 2 (**04-120032**)

1.2 Program Highlights/Key Milestones

California Environmental Quality Act (CEQA) Compliance Achieved (as required by law):

- Villa Park HS Science Center – Notice of Exemption (Board approved on 9/20/18).



-
- Canyon HS Science Center – Notice of Exemption (Board approved on 7/26/18).
 - Orange HS Science Center – Notice of Exemption (Board approved on 3/8/18).
 - El Modena HS Science Center – Notice of Exemption (Board approved on 3/8/18).

Phase II Measure S Bond Project Development Update:

- As of 05/31/21 the remote design meetings are continuing to be being held with two (2) of the Architectural teams, District, Program Management, Construction Management, and school staff, based on design progress.
 - At Villa Park HS, [application 04-119694 is being reviewed by DSA plan check](#).
 - At El Modena HS, the full DSA page-turn with the design team was held on 04/2/2021. The DSA application date was 4/23/2021, and the [application 04-120032 is being reviewed by DSA plan check](#).
 - At Orange HS, the full DSA page-turn with the design team was held on 04/23/2021. The DSA application date is in June 2021, for plans and specifications to be filed for review.
 - At Canyon HS, Cannon Parkin preparing for the full DSA page-turn by 07/23/2021. Preparing for the DSA submission on 8/16/2021.
- As of 5/31/21, continue the space planning of the swing space needed at Orange HS, required for the phase 2 project of the new administration building. Provide moving supplies for early relocations from the building 200 and 300 classrooms in preparation for the Phase 2 project. Assist with any removal of surplus or hazardous material because of the move.
- As of 5/31/21, at both Villa Park HS and El Modena HS, conducting meetings with the staff relocating/District's leadership and continue preparation for relocations (teacher meetings, rooms/items relocating review, moving supplies orders/delivery, hazmat, and surplus items removal), new furniture delivery/installation, and assistance in OFCI deliveries.
- As of 5/31/21, at Canyon HS preparing for site visits and review of classrooms relocating into the new Science Building for preparation and planning. Continue the Furniture and Equipment selection and obtain proposals for the Phase 1 project to include the Science and Administrative space. Assist the District's Facilities Planner with the Administrative furniture standards (as needed).
- As of 05/31/21, sent out the request for proposal CEQA process for the four (4) Phase II projects, using the audit group that conducted the Phase I audits and is familiar with the each of the HS campuses

Program Wide Cash Flow Projection / Bond Issuance

- As of 05/31/21, we are preparing to revise the last cash flow assessment in May 2020, which the current projections of the Phase II projects are based on. The first complete Phase I project nearing completion is the Orange HS, Phase I Science Center project.



- New analysis data on the slow spending in the Phase I program and current market conditions due to the COVID-19 pandemic, it appears that selling Bonds before May 2022 needs to be re-analyzed.

Project Achievements:

- Submitted DSA-168 for the final costs at the Orange HS Science Center Project (04-116859), including the final change order # 10, for close out.
- Process the DSA-168 for the final costs at the Villa Park HS Parking Drop-Off Project (04-118521), including the balance of outstanding change orders, to send to DSA for close out.
- As of 05/31/21, processing [payment application # 25 \(Mar-Apr\)](#), for Pinner (OHS) reflecting 100% paid overall completion, reflecting [554 calendar days](#) (full contract time) elapsed.
- As of 05/31/21, processing [payment application # 24](#) (April), for ACI (EMHS) reflecting [67%](#) paid overall completion, reflecting [315 calendar days](#) elapsed.
- As of 05/31/21, processing payment application # 25 (March), for ACI (VPHS) reflecting [59%](#) paid overall completion, reflecting [407 calendar days](#) elapsed.
- As of 05/31/21, processing payment application # 23 (April), for Swinerton (CHS) reflecting [59%](#) paid overall completion, reflecting [619 calendar days](#) elapsed.

1.3 Look Ahead (next 90 days)

Board of Education Agenda

June 24th

1. Recommend Board approval for gkkworks/CannonDesign, in the amount of \$34,080.00, to revise the current Canyon HS Phase II - 50% CD set of documents to remove the teachers' lounge and restrooms and revise the layout to include two medically fragile classrooms, one with a full training kitchen, quiet room, testing room, two student toilets with adult changing, a speech room, storage and two staff toilets, reflecting a new contract total of \$654,080.00.
2. Recommend Board approval and acceptance of completed contract and authorize to file the appropriate Notice of Completion for – S1819-003 Orange High School Science Center (Rebid of S1819-001). The contract listed below have been completed and require acceptance by the Board of Education prior to filing of appropriate notice of completion:

Bid No. S1819-003 Orange High School Science Center:

Project	Orange High School Science Center
Board Approval:	December 13, 2018
Original Purchase Order:	193441



Completion Date:	February 11, 2021
Contractor:	Pinner Construction Company, Inc.
Original Project Amount:	\$26,109,000.00
Change Order Amount:	\$1,195,487.11
Total Project Amount:	\$27,304,487.11
Fund:	Building Measure S Projects (21)

3. Recommend Board approval of Change Order # 13 for Swinerton at Canyon HS in the amount of; Change Order No. 13: \$84,349.18 – 0 Calendar Days Additional Contract Time; Description: General Contractor costs based on Eight (8) PCO's: Five (5) Unforeseen Conditions, One (1) Owner Requested and Two (2) Design Related changes.
4. Recommend Board approval of Change Order # 3 for Angeles Contractor, Inc. at El Modena HS in the amount of; Change Order No. 3: \$47,037.66 – 0 Calendar Days Additional Contract Time; Description: General Contractor costs based on Two (2) PCO's: One (4) Owner Requested for revision to standardize AV/IT equipment and One (1) Design Related change for elevator walls
5. Recommend Board approval of Change Order # 4 for Angeles Contractor, Inc. at El Modena HS in the amount of; Change Order No. 4: \$135,234.24 – 0 Calendar Days Additional Contract Time; Description: General Contractor costs and time based on Eleven (11) PCO's: Two (2) Unforeseen Conditions, Five (5) Owner Requested Changes and Four (4) Design Related change. (This change order # 4 documentation is still being put together, I will review the DRAFT PCO's that were sent).
6. Recommend Board approval of Sierra School Equipment, our currently approved classroom furniture vendor at each of the other new science high school locations, for classroom furniture at Canyon HS in the amount of; \$495,032.00, which includes 7.75% tax and a 5% contingency in the amount of \$23,572.94. This order reflects a savings based on existing inventory use see email attached)

Program Wide

- Orange HS Science Center – completing final punch list items on the Science Center, any item remaining will be placed on the Warranty list. Moving forward with the recommend of the Notice of Completion for the June 3rd Board meeting.
- Orange HS Science Center – DSA reviewing the DSA-168 final cost for the new Science Center building, for full DSA Certificate of Completion.
- Orange HS Science Center – Move Manger focusing on post-move on-site assistance for teachers. Removal of post-relocation surplus items as approved by the Principal and readiness of relocated classrooms for new occupants or demolition in preparation for the Phase 2 project.
- Orange HS Phase II – Lionakis moving forward to final design. Will establish a DSA page-turn meeting with all teams to review the Phase II scope of work prior to final DSA submission.



-
- Orange HS Phase II – Review the Phase II 100% construction cost estimate from the Construction Manager for adherence to budget. Revise the design to conform to budget, if necessary. Prepare for Page Turn meeting prior to DSA design submission.
 - El Modena HS Science Center – Continue the final stages of completing the NNC items concerning the structural steel welding, pouring slabs, setting steel for the roof decks, interior framing, drywall and interior utility line runs.
 - El Modena HS Science Center – District legal is reviewing project team information outlining the outstanding issues, agreements to date and District position moving forward. As a result of further project team discussion, the un-approved substantial completion date has moved to July 2021.
 - El Modena HS Phase II – Submitted Phase II design for DSA review. DSA review process continues.
 - El Modena HS Phase II – Move Manager updated room assignments (move to) for teachers received and approved by the Principal. Site visit to review power and data ports supporting the furniture. Completed proposed furniture placement for the new Science center and obtained the District's leadership approval. Updated the furniture vendor with new the delivery and installation date.
 - Villa Park HS Interim Housing & Science Center – Continue the finalizing of NNC's on steel welds, pouring slab on grade, setting steel for the roof deck, grade beams, columns, footings, interior framing, drywall, and interior utility line runs.
 - Villa Park HS Interim Housing & Science Center – Completing final punch list items and asphalt issues to complete the Parking and Drop Off zone (04-118521) work. Upload all DSA final documents.
 - Villa Park HS Science Center – District legal is reviewing project team information outlining the issues, agreements to date and District position moving forward. As a result of further project team discussion, the un-approved substantial completion date has moved to August 2021.
 - Villa Park HS Phase II – Submitted Phase II design for DSA review. DSA review process continues.
 - Villa Park HS Phase II – Move Manager continues preparation for relocations (teacher meetings, rooms/items relocating review, moving supplies orders/delivery, hazmat, and surplus items removal), new furniture delivery, and assistance in OFCI delivery.
 - Canyon HS Science Center – Continue interior framing, drywall and interior utility line runs, as well as completing the MPR area along with the ramps and sidewalks needed.



- Canyon HS Phase II –Cannon Design moving forward to final design for the Phase II project. Will establish a DSA page-turn meeting with all teams to review the Phase II scope of work prior to final DSA submission.
- Canyon HS Phase II – Prepare to review the Phase II 100% construction cost estimates from the Construction Manager for adherence to budget. Revise the design to conform to budget, if necessary.
- Canyon HS Phase II – Move Manager continues with site visit and review of classrooms relocating into the new Science Building for preparation and planning. Continue the Furniture and Equipment selection and obtain proposals for the Phase 1 project.



2.0 PROJECT STATUS REPORT



Canyon High School
New STEM Building

CANYON HIGH SCHOOL



EL MODENA SCIENCE CENTER

Overall View

HED



Orange High School Science Center



AT VILLA PARK HIGH SCHOOL

LPA

CANYON HIGH SCHOOL
HOME OF THE COMANCHES

CANYON HS SCIENCE CENTER

- ✓ 12 Laboratory Rooms
- ✓ 12 General Classrooms
- ✓ Student Services
- ✓ New Food Services

- ✓ New Multi-Purpose Room Entry
- ✓ Parking Lot Improvements
- ✓ Infrastructure Upgrade and Improvements
- ✓ Landscape Improvements

Project Update (Construction):

- As of 05/31/21, Swinerton continuing with internal utility and wire runs, 2nd floor run penetrations, sidewalk pours, site excavation, roofing deck and penetrations, grading, parking lot paving, and fencing trenching within the new science center building footprint, also completing the MPR exterior finishes on store front and sidewalks.
- As of 05/20/21, the Board approved a one-year lease extension for one (1) relocatable building, to provide interim kitchen use for the school unit the Measure S STEM building project (Phase I) is completed, to Elite Modular Leasing & Sales has proposed a [one-year lease extension covering \(7/1/2021 thru 6/30/2022\), in the amount of \\$30,131.00.](#)
- As of 05/31/21, Recommend Board approval of Change Order # 12 for Swinerton at Canyon HS in the amount of; Change Order No. 12: \$227,289.38 – 69 Calendar Days Additional Contract Time, which revises the substantial completion date to: July 4, 2022.
- As of 05/31/21, Recommend Board approval to ratify the Grant Deed for Anaheim Public Utility at Canyon HS for the utility easement needed.
- As of 05/31/21, Move Manger continued to assist the District's Facilities Planner in the planning of the new furniture and equipment standards for the school's administration area of the new Science Building. Presented to the Principal the furniture options chosen and approved by Facilities and planning as the standards for the administration area. Worked with the furniture vendor on the quantities and layout requirements for the classrooms in the new Science Building.
- As of 05/31/21, processing payment application # 23 (April) reflecting [59%](#) paid overall completion, reflecting [619 calendar days](#) elapsed.

See Construction Photo's below:



Left to right: exterior scaffolding in place for exterior framing activities, interior steel framing in place with wire and utility line runs and canopy and sidewalk work completing for new MPR entry.



EL MODENA HS SCIENCE CENTER

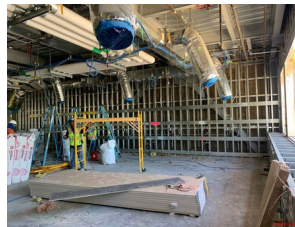
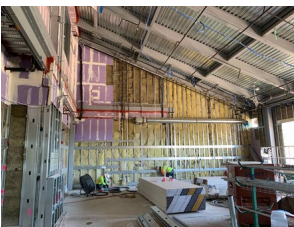
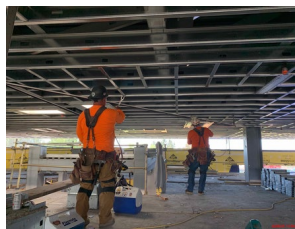
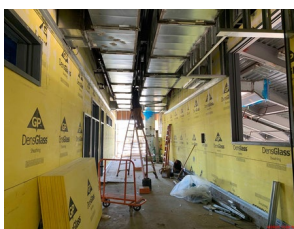
- ✓ 12 Laboratory Rooms
- ✓ 1 General Classrooms
- ✓ 2 Medically Fragile Classrooms

- ✓ Relocation of Campus MDF
- ✓ Technology & Utility Upgrade
- ✓ Landscape Improvements

Project Update (Construction):

- As of 05/31/21, Angeles is correcting all deviation issues, prioritizing the Stop issues, correction of continuity and cap plates, reducing the number of NNC issues, completing the standing seam roof deck, duct penetrations in roof, interior utility line runs, interior framing, stairs, HVAC ductwork, focusing on the building being weather-tight.
- As of 05/31/21, further discussions with general contractor on the un-approved substantial completion date of November 2021, that has been reflected in their last schedule update and topic of weekly discussion in meetings.
- As of 05/31/21, recommend Board approval of Change Order # 3 for Angeles Contractor, Inc. at El Modena HS in the amount of; Change Order No. 3: \$47,037.66 – 0 Calendar Days and; Change Order No. 4: \$135,234.24 – 0 Calendar Days. These are both unilateral due to the general contractor's refusal to agree on the time of this change.
- As of 05/31/21, the District and Program Manager agreed to place a project management position, to augment the construction management staff, to help move the issues that are trying to stall and further delay this project.
- As of 05/31/21, Move Manger received moving boxes and supplies that were delivered to teacher classrooms that will be relocating. Meet and discuss with the Department Chair the accessory items required for the new equipment to obtain a proposal. Work with the furniture vendor on storage solutions due to the delay in the construction schedule of the new building.
- As of 05/31/21, processing payment application # 24 (April) reflecting 67% paid overall completion, reflecting 315 calendar days elapsed.

See Construction Photo's below:



Left to right: Interior wall board and door framing and pipe and conduit run, interior insulation, piping, and wire pulls, entrance ceiling lighting and wire pulls, exterior plywood sheathing and completion work on standing seam roof section.



ORANGE HS SCIENCE CENTER

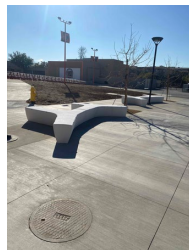
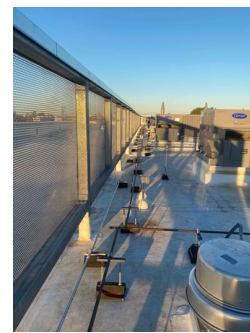
- ✓ 12 Laboratory Rooms
- ✓ 1 General Classrooms

- ✓ New Panther Pavilion Plaza
- ✓ 2 Medically Fragile Classrooms

Project Update Increment # 2 – Science Center (Close Out):

- As of 05/31/21, Pinner completing all punch list work on the interior and exterior of the STEM building, establish the warranty exceptions list with cost.
- As of 05/31/21, processing the DSA-168 for the final costs, including the balance of outstanding change orders, to send to DSA for close out.
- As of 05/31/21, recommend Board approval and acceptance of completed contract and authorize to file the appropriate Notice of Completion for – S1819-003 Orange High School Science Center (Rebid of S1819-001). The completed contract in the amount of \$27,304,487.11, once accepted, will be filed with the County for notice of completion
- As of 05/31/21, Move Manger continued the space planning and furniture needs of the swing space required for the new administration building (phase 2). Work with the school assistant principal on the relocation of classrooms in the footprint of the new swing space to allow renovations to begin during the summer break. Provide moving supplies to the school in preparation for the Phase 2 relocations.
- As of 05/31/21, processing payment application # 25 (Mar-Apr), reflecting **100%** paid overall completion, reflecting **554 calendar days** (full contract time) elapsed.

See Construction Photo's below:



Left to right: Various photos on the roof mounted piping and wiring finished to the roof top equipment, site benches (oof entrance) and roll up door in classroom.





VILLA PARK HIGH SCHOOL

SCHOOL OF EXCELLENCE

VILLA PARK HS SCIENCE CENTER

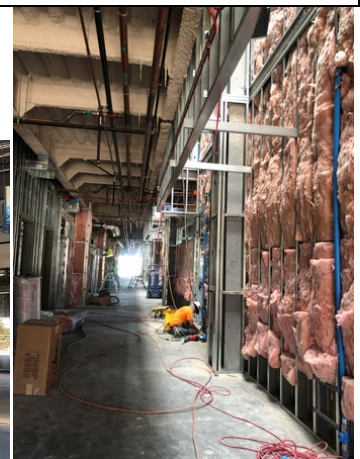
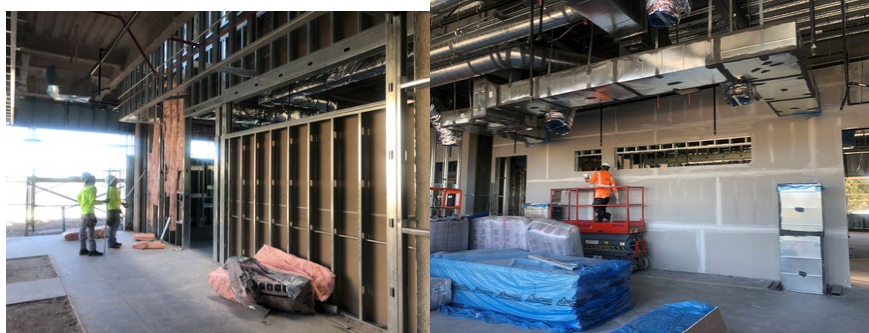
- ✓ 12 Laboratory Rooms
- ✓ 2 General Classrooms
- ✓ 2 Medically Fragile Classrooms

- ✓ Demolish existing building 300
- ✓ Install 10 New Portable Buildings

Project Update ([Construction](#)):

- As of 05/31/21, Angeles completing roofing penetrations, interior utility line runs, interior framing, starting exterior facia, hvac ductwork runs, drop ceiling, insulation, exterior masonry wall, interior drywall, focusing on the building being weather-tight as well as completing the punch list work for the parking drop off entrance.
- As of 05/31/21, preparing documentation to secure general contractor agreement on the un-approved substantial completion date reflects September 23, 2021, that has been reflected in their last schedule update and topic of weekly discussion in meetings.
- As of 05/31/21, DSA is reviewing the final costs, including the balance of outstanding change orders, for close out on the Parking Drop-Off project (04-118521).
- As of 05/20/21, the Board approval of DKS Associates, Inc, to provide additional engineering and design work for the installation of a conflict monitor is required by the City of Villa Park, in the amount of \$7,380.00.
- As of 05/31/21, Move Manger conducted Site visit with the District and School's leadership the classrooms that will be relocating to the new Science Building. Present to the Villa Park leadership and teachers the move management occupancy plan.
- As of 05/31/21, processing payment application # 25 (March) reflecting **59%** paid overall completion, reflecting **407 calendar days** elapsed.

[See Construction Photo's below:](#)



Left to right: Exterior sheathing and scaffolding in place, Interior 1st floor drywall, overhead duct and conduit runs, insulation being placed in interior hallway and classroom walls.



3.0 FINANCIAL REPORT

Measure S Bond Program Financial Report for May 2021

3.1 Project Cost Estimate

QSS Data thru 5/31/2021

	Budget	Contracted to Date	Expended to Date	Quarterly Expense Apr '21 - Jun '21	% Expended
PROGRAM					
Phase 1 - HS Science Center	\$204,655,245	\$159,509,091	\$115,135,995	\$5,248,076	56.26%
Phase 2	\$86,948,659	\$8,371,338	\$4,512,533	\$835,388	5.19%
TOTAL	\$291,603,903	\$167,880,428	\$119,648,529	\$6,083,464	41.03%
Canyon High School					
Phase 1 - HS Science Center	\$68,617,380	\$50,565,970	\$29,694,966	\$2,211,141	43.28%
Phase 2	\$4,648,901	\$1,082,253	\$477,413	\$134,068	10.27%
TOTAL	\$73,266,281	\$51,648,223	\$30,172,379	\$2,345,209	41.18%
El Modena High School					
Phase 1 - HS Science Center	\$40,031,702	\$33,832,474	\$23,582,450	\$1,333,764	58.91%
Phase 2	\$32,741,295	\$2,610,000	\$1,614,733	\$393,707	4.93%
TOTAL	\$72,772,997	\$36,442,474	\$25,197,183	\$1,727,471	34.62%
Orange High School					
Phase 1 - HS Science Center	\$51,652,876	\$42,306,478	\$41,149,734	\$153,038	79.67%
Phase 2	\$21,213,087	\$2,189,691	\$1,147,625	\$278,868	5.41%
TOTAL	\$72,865,963	\$44,496,169	\$42,297,359	\$431,906	58.05%
Villa Park High School					
Phase 1 - HS Science Center	\$44,353,287	\$32,804,169	\$20,708,845	\$1,550,133	46.69%
Phase 2	\$28,345,375	\$2,489,393	\$1,272,762	\$28,745	4.49%
TOTAL	\$72,698,662	\$35,293,562	\$21,981,607	\$1,578,878	30.24%



Measure S Bond Program

Financial Report for May 2021

Budget vs Actuals - By School and Budget Category with Vendor Detail

QSS Data thru 5/31/2021

	Budget	Contracted to Date	Expended to Date	Quarterly Expense Apr '21 - Jun '21	% Expended
Canyon High School					
390-9520 Canyon HS Science Center (DSA 04-117300)					
1. Design Cost					
1.01 Architect					
UNCOMMITTED	\$13,600	\$0	\$0	\$0	
GKKWORKS CANNON DESIGN	\$3,122,050	\$3,122,050	\$2,942,657	\$29,288	94.25%
LIONAKIS	\$14,058	\$14,058	\$14,058	\$0	100.00%
	\$3,149,708	\$3,136,108	\$2,956,715	\$29,288	93.87%
2. Construction Cost					
2.01 Construction					
UNCOMMITTED	\$227,291	\$0	\$0	\$0	
SWINERTON BUILDERS	\$39,075,042	\$39,075,042	\$20,461,433	\$1,868,811	52.36%
	\$39,302,332	\$39,075,042	\$20,461,433	\$1,868,811	52.06%
2.02 OFCI and Other Construction					
UNCOMMITTED	\$472,128	\$0	\$0	\$0	
ACCO ENGINEERED SYSTEMS INC	\$236,785	\$236,785	\$236,785	\$108,596	100.00%
AMERICAN REPROGRAPHICS CO LLC	\$1,026	\$1,026	\$0	\$0	0.00%
CITY OF ANAHEIM - ELECTRICAL ENGINEERING DIV	\$91,340	\$91,340	\$91,340	\$0	100.00%
WW GRAINGER INC	\$1,039	\$1,039	\$0	\$0	0.00%
	\$802,317	\$330,189	\$328,125	\$108,596	40.90%
3. Program and Construction Management					
3.01 Program Management Fees					
UNCOMMITTED	\$1,002,060	\$0	\$0	\$0	
CUMMING CONSTRUCTION MGMT INC	\$1,198,897	\$2,179,717	\$1,001,689	\$29,184	83.55%
	\$2,200,957	\$2,179,717	\$1,001,689	\$29,184	45.51%
3.02 Construction Management Fees					
UNCOMMITTED	\$374,766	\$0	\$0	\$0	
CORDOBA CORPORATION	\$87,508	\$87,508	\$87,479	\$9,990	99.97%
GAFCON INC	\$2,258,845	\$2,431,047	\$2,064,873	\$65,795	91.41%
	\$2,721,119	\$2,518,555	\$2,152,352	\$75,785	79.10%
4. Construction Support Costs					
4.01 Rental					
UNCOMMITTED	\$1	\$0	\$0	\$0	
	\$1	\$0	\$0	\$0	0.00%
4.02 Title, Environmental, Stormwater Management					
UNCOMMITTED	\$56,555	\$0	\$0	\$0	
CHICAGO TITLE COMPANY	\$750	\$750	\$750	\$0	100.00%



Measure S Bond Program

Financial Report for May 2021

Budget vs Actuals - By School and Budget Category with Vendor Detail

QSS Data thru 5/31/2021

	Budget	Contracted to Date	Expended to Date	Quarterly Expense Apr '21 - Jun '21	% Expended
CITY OF ANAHEIM	\$2,524	\$2,524	\$2,524	\$524	100.00%
CITY OF ANAHEIM - WATER	\$3,082	\$3,082	\$3,082	\$0	100.00%
COUNTY OF ORANGE - ENVIRONMENTAL HEALTH	\$1,615	\$1,615	\$1,615	\$0	100.00%
ENVIRONMENTAL AUDIT INC	\$50,800	\$50,800	\$21,375	\$0	42.08%
OUSD COST OF INTEREST DISTRIBUTION	\$1	\$1	\$1	\$0	100.00%
	\$115,327	\$58,771	\$29,346	\$524	25.45%
4.03 Commissioning					
UNCOMMITTED	\$23,241	\$0	\$0	\$0	
P2S ENGINEERING INC	\$49,202	\$49,202	\$38,395	\$0	78.03%
	\$72,443	\$49,202	\$38,395	\$0	53.00%
4.04 Builders Risk Insurance					
UNCOMMITTED	\$0	\$0	\$0	\$0	
	\$0	\$0	\$0	\$0	
4.05 DSA Review Fees					
UNCOMMITTED	\$76,626	\$0	\$0	\$0	
DIVISION OF STATE ARCHITECT	\$504,370	\$504,370	\$504,370	\$0	100.00%
	\$580,996	\$504,370	\$504,370	\$0	86.81%
4.06 Postage, Printing & Advertising					
UNCOMMITTED	\$56,830	\$0	\$0	\$0	
AMERICAN REPROGRAPHICS CO LLC	\$16,561	\$16,561	\$10,950	\$0	66.12%
SOUTHERN CALIFORNIA NEWS GROUP	\$2,605	\$2,605	\$2,605	\$0	100.00%
	\$75,997	\$19,167	\$13,555	\$0	17.84%
4.07 DSA Inspection (IOR)					
UNCOMMITTED	\$139,851	\$0	\$0	\$0	
KNOWLAND CONSTRUCTION SERVICES	\$454,016	\$454,016	\$255,640	\$16,192	56.31%
	\$593,867	\$454,016	\$255,640	\$16,192	43.05%
4.08 DSA Construction Phase Testing (LOR)					
UNCOMMITTED	\$90,876	\$0	\$0	\$0	
AMERICAN ENGINEERING LABORATORIES INC	\$556,995	\$556,995	\$419,086	\$82,762	75.24%
	\$647,871	\$556,995	\$419,086	\$82,762	64.69%
4.09 Relocation					
UNCOMMITTED	\$23,140	\$0	\$0	\$0	
ULINE INC	\$1,860	\$1,860	\$0	\$0	0.00%
	\$25,000	\$1,860	\$0	\$0	0.00%
4.10 Labor Compliance					
UNCOMMITTED	\$47,498	\$0	\$0	\$0	
	\$47,498	\$0	\$0	\$0	0.00%
4.11 Preliminary Testing (Hazmat, Topo, Geo, etc)					
UNCOMMITTED	\$229,637	\$0	\$0	\$0	
C BELOW SUBSURFACE IMAGING (Subsurface Investigation)	\$8,445	\$8,445	\$8,445	\$0	100.00%



Measure S Bond Program
Financial Report for May 2021
Budget vs Actuals - By School and Budget Category with Vendor Detail

QSS Data thru 5/31/2021

	Budget	Contracted to Date	Expended to Date	Quarterly Expense Apr '21 - Jun '21	% Expended
CALIFORNIA GEOLOGICAL SURVEY (Geology and Seismology Review)	\$3,600	\$3,600	\$3,600	\$0	100.00%
ENVIRONMENTAL NETWORK CORPORATION	\$20,210	\$20,210	\$20,193	\$0	99.91%
HARRINGTON GEOTECHNICAL ENGINEERING INC (Geotechnical Soils Investigation)	\$13,500	\$13,500	\$13,500	\$0	100.00%
PROVENCER, GEORGE (dba PROVO ENGINEERING)	\$720	\$720	\$720	\$0	100.00%
RMA GROUP (dba SITESCAN)	\$26,103	\$26,103	\$26,103	\$0	100.00%
XICOTENCATL ENRIQUE SALAZAR (Topographical Survey)	\$20,100	\$20,100	\$20,100	\$0	100.00%
	\$322,315	\$92,678	\$92,660	\$0	28.75%
4.12 Utility Connection Fees (Local Permits)					
UNCOMMITTED	\$173,033	\$0	\$0	\$0	
AT&T	\$5,302	\$5,302	\$5,302	\$0	100.00%
CITY OF ANAHEIM - ELECTRICAL ENGINEERING DIV	\$2,756	\$2,756	\$2,756	\$0	100.00%
CROWN CASTLE INTERNATIONAL	\$6,455	\$6,455	\$6,455	\$0	100.00%
SOUTHERN CALIFORNIA GAS CO	\$2,445	\$2,445	\$2,445	\$0	100.00%
	\$189,991	\$16,958	\$16,958	\$0	8.93%
4.13 FF&E (Laboratory Tables and Chairs, other)					
UNCOMMITTED	\$666,227	\$0	\$0	\$0	
	\$666,227	\$0	\$0	\$0	0.00%
4.14 Legal Counsel					
UNCOMMITTED	\$94,996	\$0	\$0	\$0	
	\$94,996	\$0	\$0	\$0	0.00%
5. Contingency					
5.01 Construction Contingency					
UNCOMMITTED	\$1,884,111	\$0	\$0	\$0	
	\$1,884,111	\$0	\$0	\$0	0.00%
5.02 Project Contingency					
UNCOMMITTED	\$12,848,455	\$0	\$0	\$0	
	\$12,848,455	\$0	\$0	\$0	0.00%
Total 390-9520 Canyon HS Science Center (DSA 04-117300)	\$66,341,527	\$48,993,628	\$28,270,323	\$2,211,141	42.61%
390-9520 Canyon HS Unallocated Funds F21					
4. Construction Support Costs					
4.15 Miscellaneous Fees					
UNCOMMITTED	\$0	\$0	\$0	\$0	
OUSD COST OF INTEREST DISTRIBUTION	\$36,936	\$36,936	\$36,936	\$0	100.00%
	\$36,936	\$36,936	\$36,936	\$0	100.00%
5. Program Reserve					
5.03 Interest Earned - Reserve					



Measure S Bond Program
Financial Report for May 2021
Budget vs Actuals - By School and Budget Category with Vendor Detail

QSS Data thru 5/31/2021

	Budget	Contracted to Date	Expended to Date	Quarterly Expense Apr '21 - Jun '21	% Expended
UNCOMMITTED	\$1,229,345	\$0	\$0	\$0	
	\$1,229,345	\$0	\$0	\$0	0.00%
Total 390-9520 Canyon HS Unallocated Funds F21	\$1,266,281	\$36,936	\$36,936	\$0	2.92%
390-0000 Canyon HS IP Surveillance Camera and Systems					
4. Construction Support Costs					
4.13 FF&E (Laboratory Tables and Chairs, other)					
UNCOMMITTED	\$0	\$0	\$0	\$0	
CDW GOVERNMENT INC (Parts for IP Camera Systems)	\$29,337	\$29,337	\$29,337	\$0	100.00%
DIGITAL NETWORKS GROUP INC (F/I IP Camera Software)	\$7,093	\$7,093	\$7,093	\$0	100.00%
INTER-PACIFIC INC	\$18,163	\$18,163	\$18,163	\$0	100.00%
	\$54,593	\$54,593	\$54,593	\$0	100.00%
Total 390-0000 Canyon HS IP Surveillance Camera and Systems	\$54,593	\$54,593	\$54,593	\$0	100.00%
390-9520 Canyon HS Interim Kitchen (DSA 04-118418)					
1. Design Cost					
1.01 Architect					
UNCOMMITTED	\$0	\$0	\$0	\$0	
GKKWORKS CANNON DESIGN	\$119,620	\$119,620	\$11,475	\$0	9.59%
	\$119,620	\$119,620	\$11,475	\$0	9.59%
2. Construction Cost					
2.01 Construction					
UNCOMMITTED	\$0	\$0	\$0	\$0	
SWINERTON BUILDERS	\$1,053,557	\$1,053,557	\$1,048,571	\$0	99.53%
	\$1,053,557	\$1,053,557	\$1,048,571	\$0	99.53%
2.02 OFCI and Other Construction					
UNCOMMITTED	\$10	\$0	\$0	\$0	
E.R.E.S. ENTERPRISES INC DBA ECONOMY RESTAURANT EQUIP	\$49,721	\$49,721	\$49,721	\$0	100.00%
THE DICKLER CORPORATION DBA CHEFS TOYS	\$109,449	\$109,449	\$109,449	\$0	100.00%
	\$159,180	\$159,170	\$159,170	\$0	99.99%
4. Construction Support Costs					
4.01 Rental					
UNCOMMITTED	\$0	\$0	\$0	\$0	
ELITE MODULAR LEASING & SALES INC	\$131,733	\$131,733	\$114,798	\$0	87.14%
	\$131,733	\$131,733	\$114,798	\$0	87.14%
4.05 DSA Review Fees					
UNCOMMITTED	\$0	\$0	\$0	\$0	



Measure S Bond Program

Financial Report for May 2021

Budget vs Actuals - By School and Budget Category with Vendor Detail

QSS Data thru 5/31/2021

	Budget	Contracted to Date	Expended to Date	Quarterly Expense Apr '21 - Jun '21	% Expended
DIVISION OF STATE ARCHITECT	\$15,812	\$15,812	\$15,812	\$0	100.00%
	\$15,812	\$15,812	\$15,812	\$0	100.00%
4.06 Postage, Printing & Advertising					
UNCOMMITTED	\$0	\$0	\$0	\$0	
	\$0	\$0	\$0	\$0	
4.07 DSA Inspection (IOR)					
UNCOMMITTED	\$0	\$0	\$0	\$0	
KNOWLAND CONSTRUCTION SERVICES	\$71,104	\$71,104	\$61,688	\$0	86.76%
	\$71,104	\$71,104	\$61,688	\$0	86.76%
4.08 DSA Construction Phase Testing (LOR)					
UNCOMMITTED	\$0	\$0	\$0	\$0	
AMERICAN ENGINEERING LABORATORIES INC	\$17,100	\$17,100	\$9,219	\$0	53.91%
	\$17,100	\$17,100	\$9,219	\$0	53.91%
4.11 Preliminary Testing (Hazmat, Topo, Geo, etc)					
UNCOMMITTED	\$0	\$0	\$0	\$0	
ENVIRONMENTAL NETWORK CORPORATION	\$4,245	\$4,245	\$3,910	\$0	92.10%
	\$4,245	\$4,245	\$3,910	\$0	92.10%
Total 390-9520 Canyon HS Interim Kitchen (DSA 04-118418)	\$1,572,352	\$1,572,342	\$1,424,644	\$0	90.61%
390-9520 Canyon HS Phase II Planning and Design					
1. Design Cost					
1.01 Architect					
UNCOMMITTED	\$0	\$0	\$0	\$0	
GKKWORKS CANNON DESIGN	\$663,500	\$663,500	\$359,363	\$117,013	54.16%
	\$663,500	\$663,500	\$359,363	\$117,013	54.16%
1.02 AE Design Contingency					
UNCOMMITTED	\$44,000	\$0	\$0	\$0	
GKKWORKS CANNON DESIGN	\$0	\$44,000	\$0	\$0	
	\$44,000	\$44,000	\$0	\$0	0.00%
3. Program and Construction Management					
3.01 Program Management Fees					
UNCOMMITTED	\$182,789	\$0	\$0	\$0	
CUMMING CONSTRUCTION MGMT INC	\$21,240	\$21,240	\$14,302	\$4,835	67.33%
	\$204,029	\$21,240	\$14,302	\$4,835	7.01%
3.02 Construction Management Fees					
UNCOMMITTED	\$104,630	\$0	\$0	\$0	
CORDOBA CORPORATION	\$234,970	\$234,970	\$0	\$0	0.00%
	\$339,600	\$234,970	\$0	\$0	0.00%



Measure S Bond Program

Financial Report for May 2021

Budget vs Actuals - By School and Budget Category with Vendor Detail

QSS Data thru 5/31/2021

	Budget	Contracted to Date	Expended to Date	Quarterly Expense Apr '21 - Jun '21	% Expended
4. Construction Support Costs					
4.06 Postage, Printing & Advertising					
UNCOMMITTED	\$0	\$0	\$0	\$0	
AMERICAN REPROGRAPHICS CO LLC	\$7,500	\$7,500	\$0	\$0	0.00%
	\$7,500	\$7,500	\$0	\$0	0.00%
4.11 Preliminary Testing (Hazmat, Topo, Geo, etc)					
UNCOMMITTED	\$311,976	\$0	\$0	\$0	
ENVIRONMENTAL NETWORK CORPORATION	\$19,515	\$19,515	\$12,220	\$12,220	62.62%
	\$331,491	\$19,515	\$12,220	\$12,220	3.69%
Total 390-9520 Canyon HS Phase II Planning and Design	\$1,590,120	\$990,725	\$385,884	\$134,068	24.27%
390-TBD Canyon HS Science Center Unallocated Funds F22					
5. Unallocated Bond Funds					
5.04 Unallocated Bond Funds					
UNCOMMITTED	\$703,502	\$0	\$0	\$0	
	\$703,502	\$0	\$0	\$0	0.00%
Total 390-TBD Canyon HS Science Center Unallocated Funds F22	\$703,502	\$0	\$0	\$0	0.00%
390-TBD Canyon HS Unallocated Funds F22					
5. Unallocated Bond Funds					
5.04 Unallocated Bond Funds					
UNCOMMITTED	\$1,737,907	\$0	\$0	\$0	
	\$1,737,907	\$0	\$0	\$0	0.00%
Total 390-TBD Canyon HS Unallocated Funds F22	\$1,737,907	\$0	\$0	\$0	0.00%
Canyon High School	\$73,266,281	\$51,648,223	\$30,172,379	\$2,345,209	41.18%
El Modena High School					
391-0000 El Modena HS IP Surveillance Camera and Systems					
4. Construction Support Costs					
4.13 FF&E (Laboratory Tables and Chairs, other)					
UNCOMMITTED	\$0	\$0	\$0	\$0	
CDW GOVERNMENT INC (Parts for IP Camera Systems)	\$39,388	\$39,388	\$39,388	\$0	100.00%
DIGITAL NETWORKS GROUP INC (F/I IP Camera Software)	\$11,719	\$11,719	\$11,719	\$0	100.00%
INTER-PACIFIC INC	\$30,073	\$30,073	\$30,073	\$0	100.00%
	\$81,179	\$81,179	\$81,179	\$0	100.00%
Total 391-0000 El Modena HS IP Surveillance Camera and Systems	\$81,179	\$81,179	\$81,179	\$0	100.00%



Measure S Bond Program
Financial Report for May 2021
Budget vs Actuals - By School and Budget Category with Vendor Detail

QSS Data thru 5/31/2021

	Budget	Contracted to Date	Expended to Date	Quarterly Expense Apr '21 - Jun '21	% Expended
391-9520 El Modena HS Science Center (DSA 04-117098)					
1. Design Cost					
1.01 Architect					
UNCOMMITTED	\$269,396	\$0	\$0	\$0	
HARLEY ELLIS DEVEREAUX	\$1,954,014	\$1,954,014	\$1,926,048	\$0	98.57%
LIONAKIS	\$14,059	\$14,059	\$14,059	\$0	100.00%
	\$2,237,469	\$1,968,073	\$1,940,107	\$0	86.71%
2. Construction Cost					
2.01 Construction					
UNCOMMITTED	\$0	\$0	\$0	\$0	
ANGELES CONTRACTOR, INC	\$25,936,313	\$25,936,313	\$16,956,994	\$1,027,674	65.38%
	\$25,936,313	\$25,936,313	\$16,956,994	\$1,027,674	65.38%
2.02 OFCI and Other Construction					
UNCOMMITTED	\$51,721	\$0	\$0	\$0	
ACCO ENGINEERED SYSTEMS INC	\$355,544	\$355,544	\$335,681	\$0	94.41%
AMERICAN REPROGRAPHICS CO LLC	\$1,026	\$1,026	\$0	\$0	0.00%
ARROW RESTAURANT EQUIPMENT	\$14,232	\$14,232	\$14,213	\$0	99.87%
CAROLINA BIOLOGICAL SUPPLY	\$24,213	\$24,213	\$0	\$0	0.00%
DEVELOPMENT GROUP INC	\$16,058	\$16,058	\$16,058	\$0	100.00%
FAIR PLAY SCOREBOARDS	\$17,694	\$17,694	\$17,694	\$0	100.00%
FISHER SCIENCE EDUCATION	\$26,188	\$26,188	\$21,027	\$0	80.29%
FLINN SCIENTIFIC INC	\$12,364	\$12,364	\$0	\$0	0.00%
PROFESSIONAL TURF SPECIALTIES	\$23,460	\$23,460	\$23,460	\$0	100.00%
WW GRAINGER INC	\$3,962	\$3,962	\$110	\$0	2.77%
	\$546,461	\$494,740	\$428,242	\$0	78.37%
3. Program and Construction Management					
3.01 Program Management Fees					
UNCOMMITTED	\$132,137	\$0	\$0	\$0	
CUMMING CONSTRUCTION MGMT INC	\$871,689	\$967,124	\$705,173	\$25,285	80.90%
	\$1,003,826	\$967,124	\$705,173	\$25,285	70.25%
3.02 Construction Management Fees					
UNCOMMITTED	\$344,889	\$0	\$0	\$0	
ARCADIS U.S. INC	\$1,944,170	\$1,944,170	\$1,855,159	\$175,370	95.42%
CORDOBA CORPORATION	\$90,336	\$90,336	\$90,336	\$9,720	100.00%
	\$2,379,396	\$2,034,507	\$1,945,495	\$185,090	81.76%

4. Construction Support Costs

4.01 Rental



Measure S Bond Program

Financial Report for May 2021

Budget vs Actuals - By School and Budget Category with Vendor Detail

QSS Data thru 5/31/2021

	Budget	Contracted to Date	Expended to Date	Quarterly Expense Apr '21 - Jun '21	% Expended
UNCOMMITTED	\$0	\$0	\$0	\$0	
	\$0	\$0	\$0	\$0	
4.02 Title, Environmental, Stormwater Management					
UNCOMMITTED	\$25,259	\$0	\$0	\$0	
CHICAGO TITLE COMPANY	\$1,500	\$1,500	\$1,500	\$0	100.00%
CITY OF ORANGE (PUBLIC WORKS)	\$71	\$71	\$71	\$0	100.00%
CITY OF ORANGE (WATER DIVISION)	\$16,048	\$16,048	\$10,942	\$0	68.18%
ENVIRONMENTAL AUDIT INC	\$10,950	\$10,950	\$8,548	\$0	78.06%
OUSD COST OF INTEREST DISTRIBUTION	\$1	\$1	\$1	\$0	100.00%
	\$53,829	\$28,570	\$21,061	\$0	39.13%
4.03 Commissioning					
UNCOMMITTED	\$6,112	\$0	\$0	\$0	
P2S ENGINEERING INC	\$30,558	\$30,558	\$27,601	\$0	90.32%
	\$36,670	\$30,558	\$27,601	\$0	75.27%
4.04 Builders Risk Insurance					
UNCOMMITTED	\$0	\$0	\$0	\$0	
	\$0	\$0	\$0	\$0	
4.05 DSA Review Fees					
UNCOMMITTED	\$0	\$0	\$0	\$0	
DIVISION OF STATE ARCHITECT	\$306,338	\$306,338	\$306,338	\$0	100.00%
	\$306,338	\$306,338	\$306,338	\$0	100.00%
4.06 Postage, Printing & Advertising					
UNCOMMITTED	\$7,496	\$0	\$0	\$0	
AMERICAN REPROGRAPHICS CO LLC	\$22,562	\$22,562	\$19,155	\$0	84.90%
SOUTHERN CALIFORNIA NEWS GROUP	\$2,024	\$2,024	\$2,024	\$0	100.00%
	\$32,082	\$24,585	\$21,179	\$0	66.02%
4.07 DSA Inspection (IOR)					
UNCOMMITTED	\$35,720	\$0	\$0	\$0	
BPI INSPECTION SERVICE	\$521,099	\$521,099	\$337,954	\$0	64.85%
	\$556,819	\$521,099	\$337,954	\$0	60.69%
4.08 DSA Construction Phase Testing (LOR)					
UNCOMMITTED	\$51,809	\$0	\$0	\$0	
KOURY ENGINEERING & TESTING INC (Geotechnical Engineering)	\$695,752	\$695,752	\$686,642	\$8,489	98.69%
	\$747,561	\$695,752	\$686,642	\$8,489	91.85%
4.09 Relocation					
UNCOMMITTED	\$15,740	\$0	\$0	\$0	
Beltmann Group, Inc.	\$7,080	\$7,080	\$850	\$850	12.01%
ULINE INC	\$2,180	\$2,180	\$0	\$0	0.00%
	\$25,000	\$9,260	\$850	\$850	3.40%
4.10 Labor Compliance					
UNCOMMITTED	\$0	\$0	\$0	\$0	



Measure S Bond Program

Financial Report for May 2021

Budget vs Actuals - By School and Budget Category with Vendor Detail

QSS Data thru 5/31/2021

	Budget	Contracted to Date	Expended to Date	Quarterly Expense Apr '21 - Jun '21	% Expended
	\$0	\$0	\$0	\$0	
4.11 Preliminary Testing (Hazmat, Topo, Geo, etc)					
UNCOMMITTED	\$13,619	\$0	\$0	\$0	
ALLEGIAN FIRE PROTECTION INC	\$525	\$525	\$525	\$0	100.00%
CALIFORNIA GEOLOGICAL SURVEY (Geology and Seismology Review)	\$3,600	\$3,600	\$3,600	\$0	100.00%
ENVIRONMENTAL NETWORK CORPORATION	\$6,000	\$6,000	\$5,410	\$0	90.17%
HARLEY ELLIS DEVEREAUX	\$14,908	\$14,908	\$14,908	\$0	100.00%
NINYO & MOORE	\$29,981	\$29,981	\$29,771	\$0	99.30%
PCA ARBORISTS & CONSULTANTS INC	\$1,569	\$1,569	\$1,569	\$0	100.00%
THE CONVERSE PROFESSIONAL GROUP (Soils Investigation)	\$30,640	\$30,640	\$30,640	\$0	100.00%
	\$100,842	\$87,223	\$86,423	\$0	85.70%
4.12 Utility Connection Fees (Local Permits)					
UNCOMMITTED	\$75,949	\$0	\$0	\$0	
DIVISION OF STATE ARCHITECT	\$312	\$312	\$312	\$312	100.00%
SOUTHERN CALIFORNIA EDISON	\$3,665	\$3,665	\$3,665	\$0	100.00%
STATE WATER RESOURCES CONTROL BOARD (SWRCB)	\$993	\$993	\$993	\$509	100.00%
	\$80,919	\$4,970	\$4,970	\$821	6.14%
4.13 FF&E (Laboratory Tables and Chairs, other)					
UNCOMMITTED	\$37,999	\$0	\$0	\$0	
CDW GOVERNMENT INC (Parts for IP Camera Systems)	\$59,662	\$69,999	\$0	\$0	0.00%
INTER-PACIFIC INC	\$9,256	\$9,256	\$9,256	\$0	100.00%
SIERRA SCHOOL EQUIPMENT COMPANY	\$495,446	\$495,446	\$85,556	\$85,556	17.27%
TURTLE STORAGE dba AMERICAN BICYCLE CO	\$6,871	\$6,871	\$0	\$0	0.00%
VWR INTERNATIONAL LLC	\$47,922	\$52,714	\$8,873	\$0	18.52%
	\$657,156	\$634,286	\$103,685	\$85,556	15.78%
4.14 Legal Counsel					
UNCOMMITTED	\$0	\$0	\$0	\$0	
	\$0	\$0	\$0	\$0	
4.15 Miscellaneous Fees					
UNCOMMITTED	\$0	\$0	\$0	\$0	
	\$0	\$0	\$0	\$0	
5. Contingency					
5.01 Construction Contingency					
UNCOMMITTED	\$1,863,487	\$0	\$0	\$0	
	\$1,863,487	\$0	\$0	\$0	0.00%
5.02 Project Contingency					
UNCOMMITTED	\$1,640,380	\$0	\$0	\$0	
ARCADIS U.S. INC	\$0	\$0	\$0	\$0	
	\$1,640,380	\$0	\$0	\$0	0.00%



Measure S Bond Program

Financial Report for May 2021

Budget vs Actuals - By School and Budget Category with Vendor Detail

QSS Data thru 5/31/2021

	Budget	Contracted to Date	Expended to Date	Quarterly Expense Apr '21 - Jun '21	% Expended
Total 391-9520 El Modena HS Science Center (DSA 04-117098)	\$38,204,547	\$33,743,398	\$23,572,714	\$1,333,764	61.70%
391-9520 El Modena HS Phase II Planning and Design					
1. Design Cost					
1.01 Architect					
UNCOMMITTED	\$624	\$0	\$0	\$0	
HARLEY ELLIS DEVEREAUX	\$1,864,560	\$1,864,560	\$1,220,788	\$159,884	65.47%
	\$1,865,184	\$1,864,560	\$1,220,788	\$159,884	65.45%
3. Program and Construction Management					
3.01 Program Management Fees					
UNCOMMITTED	\$86,419	\$0	\$0	\$0	
CUMMING CONSTRUCTION MGMT INC	\$59,661	\$59,661	\$40,172	\$13,582	67.33%
	\$146,080	\$59,661	\$40,172	\$13,582	27.50%
3.02 Construction Management Fees					
UNCOMMITTED	\$0	\$0	\$0	\$0	
CORDOBA CORPORATION	\$301,850	\$301,850	\$0	\$0	0.00%
	\$301,850	\$301,850	\$0	\$0	0.00%
4. Construction Support Costs					
4.03 Commissioning					
UNCOMMITTED	\$11,890	\$0	\$0	\$0	
	\$11,890	\$0	\$0	\$0	0.00%
4.05 DSA Review Fees					
UNCOMMITTED	\$0	\$0	\$0	\$0	
DIVISION OF STATE ARCHITECT	\$212,750	\$212,750	\$212,750	\$212,750	100.00%
	\$212,750	\$212,750	\$212,750	\$212,750	100.00%
4.06 Postage, Printing & Advertising					
UNCOMMITTED	\$0	\$0	\$0	\$0	
AMERICAN REPROGRAPHICS CO LLC	\$8,000	\$8,000	\$0	\$0	0.00%
	\$8,000	\$8,000	\$0	\$0	0.00%
4.11 Preliminary Testing (Hazmat, Topo, Geo, etc)					
UNCOMMITTED	\$15,000	\$0	\$0	\$0	
ARMSTRONG & BROOKS CONSULTING ENG	\$20,000	\$20,000	\$4,940	\$4,940	24.70%
GROUP DELTA CONSULTANTS INC	\$17,100	\$17,100	\$10,004	\$0	58.50%
KOURY ENGINEERING & TESTING INC (Geotechnical Engineering)	\$22,350	\$22,350	\$22,350	\$2,550	100.00%
	\$74,450	\$59,450	\$37,294	\$7,490	50.09%
Total 391-9520 El Modena HS Phase II Planning and Design	\$2,620,204	\$2,506,271	\$1,511,004	\$393,707	57.67%



Measure S Bond Program

Financial Report for May 2021

Budget vs Actuals - By School and Budget Category with Vendor Detail

QSS Data thru 5/31/2021

	Budget	Contracted to Date	Expended to Date	Quarterly Expense Apr '21 - Jun '21	% Expended
391-9520 El Modena HS Quad Shade Structures (DSA 04-119124)					
1. Design Cost					
1.01 Architect					
UNCOMMITTED	\$0	\$0	\$0	\$0	
HARLEY ELLIS DEVEREAUX	\$79,340	\$79,340	\$0	\$0	0.00%
	\$79,340	\$79,340	\$0	\$0	0.00%
4. Construction Support Costs					
4.05 DSA Review Fees					
UNCOMMITTED	\$0	\$0	\$0	\$0	
DIVISION OF STATE ARCHITECT	\$9,650	\$9,650	\$9,650	\$0	100.00%
	\$9,650	\$9,650	\$9,650	\$0	100.00%
4.06 Postage, Printing & Advertising					
UNCOMMITTED	\$0	\$0	\$0	\$0	
AMERICAN REPROGRAPHICS CO LLC	\$86	\$86	\$86	\$0	100.00%
	\$86	\$86	\$86	\$0	100.00%
5. Contingency					
5.01 Construction Contingency					
UNCOMMITTED	\$600,000	\$0	\$0	\$0	
	\$600,000	\$0	\$0	\$0	0.00%
Total 391-9520 El Modena HS Quad Shade Structures (DSA 04-119124)	\$689,076	\$89,076	\$9,736	\$0	1.41%
391-TBD El Modena HS Science Center Unallocated Funds F22					
5. Unallocated Bond Funds					
5.04 Unallocated Bond Funds					
UNCOMMITTED	\$1,138,078	\$0	\$0	\$0	
	\$1,138,078	\$0	\$0	\$0	0.00%
Total 391-TBD El Modena HS Science Center Unallocated Funds F22	\$1,138,078	\$0	\$0	\$0	0.00%
391-9520 El Modena HS Unallocated Funds F21					
4. Construction Support Costs					
4.15 Miscellaneous Fees					
UNCOMMITTED	\$0	\$0	\$0	\$0	
OUSD COST OF INTEREST DISTRIBUTION	\$22,550	\$22,550	\$22,550	\$0	100.00%
	\$22,550	\$22,550	\$22,550	\$0	100.00%
5. Program Reserve					
5.03 Interest Earned - Reserve					



Measure S Bond Program

Financial Report for May 2021

Budget vs Actuals - By School and Budget Category with Vendor Detail

QSS Data thru 5/31/2021

	Budget	Contracted to Date	Expended to Date	Quarterly Expense Apr '21 - Jun '21	% Expended
UNCOMMITTED	\$0	\$0	\$0	\$0	
	\$0	\$0	\$0	\$0	
Total 391-9520 El Modena HS Unallocated Funds F21	\$22,550	\$22,550	\$22,550	\$0	100.00%
391-TBD El Modena HS Unallocated Funds F22					
5. Unallocated Bond Funds					
5.04 Unallocated Bond Funds					
UNCOMMITTED	\$30,017,362	\$0	\$0	\$0	
	\$30,017,362	\$0	\$0	\$0	0.00%
Total 391-TBD El Modena HS Unallocated Funds F22	\$30,017,362	\$0	\$0	\$0	0.00%
El Modena High School	\$72,772,997	\$36,442,474	\$25,197,183	\$1,727,471	34.62%
Orange High School					
392-0000 Orange HS IP Surveillance Camera and Systems					
4. Construction Support Costs					
4.13 FF&E (Laboratory Tables and Chairs, other)					
UNCOMMITTED	\$0	\$0	\$0	\$0	
CDW GOVERNMENT INC (Parts for IP Camera Systems)	\$53,662	\$53,662	\$53,662	\$0	100.00%
DIGITAL NETWORKS GROUP INC (F/I IP Camera Software)	\$13,569	\$13,569	\$13,569	\$0	100.00%
INTER-PACIFIC INC	\$34,837	\$34,837	\$34,837	\$0	100.00%
	\$102,068	\$102,068	\$102,068	\$0	100.00%
Total 392-0000 Orange HS IP Surveillance Camera and Systems	\$102,068	\$102,068	\$102,068	\$0	100.00%
392-9520 Orange HS Science Bldg (DSA 04-116859)					
1. Design Cost					
1.01 Architect					
UNCOMMITTED	\$151,933	\$0	\$0	\$0	
LIONAKIS	\$1,854,196	\$1,854,196	\$1,821,294	\$575	98.23%
	\$2,006,129	\$1,854,196	\$1,821,294	\$575	90.79%
2. Construction Cost					
2.01 Construction					
UNCOMMITTED	\$1	\$0	\$0	\$0	
GIANNELLI ELECTRIC INC	\$14,878	\$14,878	\$14,878	\$0	100.00%
INTEGRATED DEMOLITION AND REMEDIATION (Abatement and Demolition)	\$44,800	\$44,800	\$44,800	\$0	100.00%
J & A FENCE (Custodial Storage Fencing)	\$0	\$0	\$0	\$0	



Measure S Bond Program

Financial Report for May 2021

Budget vs Actuals - By School and Budget Category with Vendor Detail

QSS Data thru 5/31/2021

	Budget	Contracted to Date	Expended to Date	Quarterly Expense Apr '21 - Jun '21	% Expended
KYA SERVICES LLC (Install Carpet)	\$0	\$0	\$0	\$0	
OLESK, KEITH (Termite Services)	\$0	\$0	\$0	\$0	
PINNER CONSTRUCTION	\$27,190,987	\$27,190,987	\$26,631,982	\$0	97.94%
SOUTHERN CALIFORNIA NEWS GROUP	\$0	\$0	\$0	\$0	
TIME & ALARM SYSTEMS	\$3,100	\$3,100	\$3,100	\$0	100.00%
UNIVERSAL ASPHALT CO (Remove and Patch Asphalt)	\$6,830	\$6,830	\$6,830	\$0	100.00%
	\$27,260,596	\$27,260,595	\$26,701,590	\$0	97.95%

2.02 OFCI and Other Construction

UNCOMMITTED	\$77,056	\$0	\$0	\$0	
ACCO ENGINEERED SYSTEMS INC	\$62,883	\$62,883	\$62,883	\$0	100.00%
AMERICAN REPROGRAPHICS CO LLC	\$1,026	\$1,026	\$0	\$0	0.00%
ARROW RESTAURANT EQUIPMENT	\$13,556	\$13,556	\$13,432	\$0	99.08%
CAROLINA BIOLOGICAL SUPPLY	\$16,559	\$16,559	\$16,480	\$0	99.52%
CITY OF ORANGE (PUBLIC WORKS)	\$2,000	\$2,000	\$2,000	\$0	100.00%
DEVELOPMENT GROUP INC	\$37,866	\$37,866	\$37,866	\$800	100.00%
FISHER SCIENCE EDUCATION	\$18,400	\$18,400	\$18,400	\$0	100.00%
FLINN SCIENTIFIC INC	\$10,263	\$10,263	\$10,263	\$0	100.00%
GIANNELLI ELECTRIC INC	\$24,684	\$24,684	\$24,684	\$364	100.00%
GRUETT TREE CO INC (Removal of Trees)	\$7,625	\$7,625	\$7,625	\$0	100.00%
J & A FENCE (Custodial Storage Fencing)	\$6,885	\$6,885	\$6,885	\$0	100.00%
KYA SERVICES LLC (Install Carpet)	\$0	\$0	\$0	\$0	
OLESK, KEITH (Termite Services)	\$1,500	\$1,500	\$1,500	\$0	100.00%
SOUTHERN CALIFORNIA NEWS GROUP	\$0	\$0	\$0	\$0	
TRIMARK RAYGAL LLC	\$0	\$0	\$0	\$0	
VORTEX INDUSTRIES, INC.	\$6,804	\$6,804	\$6,804	\$0	100.00%
WW GRAINGER INC	\$2,292	\$2,292	\$2,292	\$0	100.00%
	\$289,399	\$212,343	\$211,113	\$1,164	72.95%

3. Program and Construction Management

3.01 Program Management Fees

UNCOMMITTED	\$423,420	\$0	\$0	\$0	
CUMMING CONSTRUCTION MGMT INC	\$1,118,330	\$1,170,512	\$809,734	\$49,445	72.41%
	\$1,541,750	\$1,170,512	\$809,734	\$49,445	52.52%

3.02 Construction Management Fees

UNCOMMITTED	\$129,981	\$0	\$0	\$0	
BALFOUR BEATTY CONSTRUCTION	\$1,687,253	\$1,687,254	\$1,669,738	\$47,107	98.96%
CORDOBA CORPORATION	\$86,549	\$86,549	\$86,434	\$9,720	99.87%
	\$1,903,783	\$1,773,803	\$1,756,171	\$56,827	92.25%

4. Construction Support Costs

4.01 Rental



Measure S Bond Program

Financial Report for May 2021

Budget vs Actuals - By School and Budget Category with Vendor Detail

QSS Data thru 5/31/2021

	Budget	Contracted to Date	Expended to Date	Quarterly Expense Apr '21 - Jun '21	% Expended
UNCOMMITTED	\$0	\$0	\$0	\$0	
	\$0	\$0	\$0	\$0	
4.02 Title, Environmental, Stormwater Management					
UNCOMMITTED	\$47,386	\$0	\$0	\$0	
CHICAGO TITLE COMPANY	\$1,500	\$1,500	\$1,500	\$0	100.00%
OUSD COST OF INTEREST DISTRIBUTION	\$1	\$1	\$1	\$0	100.00%
PLACEWORKS INC	\$52,231	\$52,231	\$52,231	\$0	100.00%
STATE WATER RESOURCES CONTROL BOARD (SWRCB)	\$726	\$726	\$726	\$0	100.00%
	\$101,844	\$54,458	\$54,458	\$0	53.47%
4.03 Commissioning					
UNCOMMITTED	\$6,117	\$0	\$0	\$0	
P2S ENGINEERING INC	\$30,585	\$30,585	\$30,170	\$0	98.64%
	\$36,702	\$30,585	\$30,170	\$0	82.20%
4.04 Builders Risk Insurance					
UNCOMMITTED	\$0	\$0	\$0	\$0	
	\$0	\$0	\$0	\$0	
4.05 DSA Review Fees					
UNCOMMITTED	\$119,114	\$0	\$0	\$0	
DIVISION OF STATE ARCHITECT	\$252,750	\$252,750	\$252,750	\$0	100.00%
OUSD REVOLVING CASH	\$500	\$500	\$500	\$0	100.00%
	\$372,364	\$253,250	\$253,250	\$0	68.01%
4.06 Postage, Printing & Advertising					
UNCOMMITTED	\$33,302	\$0	\$0	\$0	
AMERICAN REPROGRAPHICS CO LLC	\$14,807	\$14,807	\$8,734	\$0	58.99%
SOUTHERN CALIFORNIA NEWS GROUP	\$8,518	\$8,518	\$8,518	\$0	100.00%
	\$56,626	\$23,325	\$17,252	\$0	30.47%
4.07 DSA Inspection (IOR)					
UNCOMMITTED	\$145,585	\$0	\$0	\$0	
KNOWLAND CONSTRUCTION SERVICES	\$321,507	\$321,507	\$286,404	\$0	89.08%
	\$467,092	\$321,507	\$286,404	\$0	61.32%
4.08 DSA Construction Phase Testing (LOR)					
UNCOMMITTED	\$125,025	\$0	\$0	\$0	
NINYO & MOORE	\$327,624	\$327,624	\$222,944	\$0	68.05%
	\$452,649	\$327,624	\$222,944	\$0	49.25%
4.09 Relocation					
UNCOMMITTED	\$15,671	\$0	\$0	\$0	
Beltmann Group, Inc.	\$6,229	\$6,229	\$4,876	\$0	78.27%
ULINE INC	\$3,100	\$3,100	\$3,065	\$0	98.86%
	\$25,000	\$9,329	\$7,941	\$0	31.76%
4.10 Labor Compliance					
UNCOMMITTED	\$40,951	\$0	\$0	\$0	



Measure S Bond Program

Financial Report for May 2021

Budget vs Actuals - By School and Budget Category with Vendor Detail

QSS Data thru 5/31/2021

	Budget	Contracted to Date	Expended to Date	Quarterly Expense Apr '21 - Jun '21	% Expended
	\$40,951	\$0	\$0	\$0	0.00%
4.11 Preliminary Testing (Hazmat, Topo, Geo, etc)					
UNCOMMITTED	\$203,362	\$0	\$0	\$0	
CALIFORNIA GEOLOGICAL SURVEY (Geology and Seismology Review)	\$3,600	\$3,600	\$3,600	\$0	100.00%
KOURY ENGINEERING & TESTING INC (Geotechnical Engineering)	\$13,300	\$13,300	\$13,300	\$0	100.00%
PENCO ENGINEERING INC (Topographical Survey Services)	\$42,350	\$42,350	\$41,070	\$0	96.98%
RMA GROUP (dba SITESCAN)	\$49,533	\$49,533	\$49,533	\$0	100.00%
	\$312,145	\$108,783	\$107,503	\$0	34.44%
4.12 Utility Connection Fees (Local Permits)					
UNCOMMITTED	\$151,714	\$0	\$0	\$0	
CITY OF ORANGE (PUBLIC WORKS)	\$2,500	\$2,500	\$2,500	\$0	100.00%
SOUTHERN CALIFORNIA EDISON	\$6,912	\$6,912	\$6,912	\$0	100.00%
SOUTHERN CALIFORNIA GAS CO	\$2,124	\$2,124	\$2,124	\$0	100.00%
STATE WATER RESOURCES CONTROL BOARD (SWRCB)	\$553	\$553	\$553	\$0	100.00%
	\$163,803	\$12,089	\$12,089	\$0	7.38%
4.13 FF&E (Laboratory Tables and Chairs, other)					
UNCOMMITTED	\$10,748	\$0	\$0	\$0	
CDW GOVERNMENT INC (Parts for IP Camera Systems)	\$59,662	\$59,662	\$59,658	\$0	99.99%
CONEXWEST	\$9,466	\$9,466	\$9,419	\$0	99.51%
CP PRODUCTS INC	\$4,834	\$4,834	\$4,834	\$4,834	100.00%
DEVELOPMENT GROUP INC	\$0	\$0	\$0	\$0	
GORM	\$11,423	\$11,423	\$0	\$0	0.00%
HILLYARD INC	\$32,572	\$32,572	\$31,666	\$31,666	97.22%
INTER-PACIFIC INC	\$7,904	\$7,904	\$7,904	\$0	100.00%
PSI DBA WATER VISIONS INC	\$8,527	\$8,527	\$8,527	\$8,527	100.00%
SIERRA SCHOOL EQUIPMENT COMPANY	\$464,248	\$464,248	\$464,248	\$0	100.00%
TURTLE STORAGE dba AMERICAN BICYCLE CO	\$6,871	\$6,871	\$6,537	\$0	95.14%
VORTEX INDUSTRIES, INC.	\$0	\$0	\$0	\$0	
VWR INTERNATIONAL LLC	\$34,314	\$34,314	\$34,314	\$0	100.00%
	\$650,570	\$639,821	\$627,108	\$45,027	96.39%
4.14 Legal Counsel					
UNCOMMITTED	\$81,902	\$0	\$0	\$0	
	\$81,902	\$0	\$0	\$0	0.00%
4.15 Miscellaneous Fees					
UNCOMMITTED	\$0	\$0	\$0	\$0	
	\$0	\$0	\$0	\$0	
5. Contingency					
5.01 Construction Contingency					
UNCOMMITTED	\$1,415,413	\$0	\$0	\$0	



Measure S Bond Program

Financial Report for May 2021

Budget vs Actuals - By School and Budget Category with Vendor Detail

QSS Data thru 5/31/2021

	Budget	Contracted to Date	Expended to Date	Quarterly Expense Apr '21 - Jun '21	% Expended
5.02 Project Contingency	\$1,415,413	\$0	\$0	\$0	0.00%
UNCOMMITTED	\$4,695,265	\$0	\$0	\$0	
	\$4,695,265	\$0	\$0	\$0	0.00%
Total 392-9520 Orange HS Science Bldg (DSA 04-116859)	\$41,873,983	\$34,052,219	\$32,919,020	\$153,038	78.61%
392-9520 Orange HS Shade Structure (DSA 04-118351)					
1. Design Cost					
1.01 Architect					
UNCOMMITTED	\$0	\$0	\$0	\$0	
LIONAKIS	\$17,317	\$17,317	\$17,317	\$0	100.00%
	\$17,317	\$17,317	\$17,317	\$0	100.00%
2. Construction Cost					
2.01 Construction					
UNCOMMITTED	\$0	\$0	\$0	\$0	
PINNER CONSTRUCTION	\$113,500	\$113,500	\$113,500	\$0	100.00%
	\$113,500	\$113,500	\$113,500	\$0	100.00%
3. Program and Construction Management					
3.01 Program Management Fees					
UNCOMMITTED	\$0	\$0	\$0	\$0	
CUMMING CONSTRUCTION MGMT INC	\$1,838	\$1,838	\$1,838	\$0	100.00%
	\$1,838	\$1,838	\$1,838	\$0	100.00%
3.02 Construction Management Fees					
UNCOMMITTED	\$0	\$0	\$0	\$0	
BALFOUR BEATTY CONSTRUCTION	\$5,956	\$5,956	\$5,956	\$0	100.00%
	\$5,956	\$5,956	\$5,956	\$0	100.00%
4. Construction Support Costs					
4.05 DSA Review Fees					
UNCOMMITTED	\$0	\$0	\$0	\$0	
DIVISION OF STATE ARCHITECT	\$1,873	\$1,873	\$1,873	\$0	100.00%
	\$1,873	\$1,873	\$1,873	\$0	100.00%
4.06 Postage, Printing & Advertising					
UNCOMMITTED	\$0	\$0	\$0	\$0	
	\$0	\$0	\$0	\$0	
4.07 DSA Inspection (IOR)					
UNCOMMITTED	\$0	\$0	\$0	\$0	
KNOWLAND CONSTRUCTION SERVICES	\$1,740	\$1,740	\$1,740	\$0	100.00%



Measure S Bond Program

Financial Report for May 2021

Budget vs Actuals - By School and Budget Category with Vendor Detail

QSS Data thru 5/31/2021

	Budget	Contracted to Date	Expended to Date	Quarterly Expense Apr '21 - Jun '21	% Expended
4.08 DSA Construction Phase Testing (LOR)	\$1,740	\$1,740	\$1,740	\$0	100.00%
UNCOMMITTED	\$0	\$0	\$0	\$0	
NINYO & MOORE	\$7,408	\$7,408	\$7,408	\$0	100.00%
	\$7,408	\$7,408	\$7,408	\$0	100.00%
Total 392-9520 Orange HS Shade Structure (DSA 04-118351)	\$149,631	\$149,631	\$149,631	\$0	100.00%
392-9520 Orange HS Site Improvements (DSA 04-116673)					
1. Design Cost					
1.01 Architect					
UNCOMMITTED	\$0	\$0	\$0	\$0	
LIONAKIS	\$450,189	\$450,189	\$446,286	\$0	99.13%
SILVER CREEK INDUSTRIES INC (Engineering for Warming Kitchen Relocatable Building)	\$29,682	\$29,682	\$29,682	\$0	100.00%
	\$479,871	\$479,871	\$475,968	\$0	99.19%
2. Construction Cost					
2.01 Construction					
UNCOMMITTED	\$0	\$0	\$0	\$0	
KYA SERVICES LLC (Install Carpet)	\$20,824	\$20,824	\$9,564	\$0	45.93%
SWINERTON BUILDERS	\$6,556,428	\$6,556,428	\$6,556,428	\$0	100.00%
TRIMARK RAYGAL LLC	\$89,860	\$89,860	\$89,860	\$0	100.00%
	\$6,667,112	\$6,667,112	\$6,655,852	\$0	99.83%
2.02 OFCI and Other Construction					
UNCOMMITTED	\$0	\$0	\$0	\$0	
ACCO ENGINEERED SYSTEMS INC	\$209,074	\$209,074	\$209,074	\$0	100.00%
	\$209,074	\$209,074	\$209,074	\$0	100.00%
3. Program and Construction Management					
3.01 Program Management Fees					
UNCOMMITTED	\$0	\$0	\$0	\$0	
BALFOUR BEATTY CONSTRUCTION	\$0	\$0	\$0	\$0	
CUMMING CONSTRUCTION MGMT INC	\$115,479	\$115,479	\$115,479	\$0	100.00%
	\$115,479	\$115,479	\$115,479	\$0	100.00%
3.02 Construction Management Fees					
UNCOMMITTED	\$0	\$0	\$0	\$0	
BALFOUR BEATTY CONSTRUCTION	\$296,554	\$296,554	\$296,554	\$0	100.00%
	\$296,554	\$296,554	\$296,554	\$0	100.00%
4. Construction Support Costs					



Measure S Bond Program
Financial Report for May 2021
Budget vs Actuals - By School and Budget Category with Vendor Detail

QSS Data thru 5/31/2021

	Budget	Contracted to Date	Expended to Date	Quarterly Expense Apr '21 - Jun '21	% Expended
4.02 Title, Environmental, Stormwater Management					
UNCOMMITTED	\$0	\$0	\$0	\$0	
ORANGE COUNTY HEALTH CARE AGENCY	\$1,470	\$1,470	\$1,470	\$0	100.00%
	\$1,470	\$1,470	\$1,470	\$0	100.00%
4.03 Commissioning					
UNCOMMITTED	\$0	\$0	\$0	\$0	
P2S ENGINEERING INC	\$4,755	\$4,755	\$4,667	\$0	98.15%
	\$4,755	\$4,755	\$4,667	\$0	98.15%
4.05 DSA Review Fees					
UNCOMMITTED	\$3,853	\$0	\$0	\$0	
DIVISION OF STATE ARCHITECT	\$94,585	\$94,585	\$94,585	\$0	100.00%
	\$98,438	\$94,585	\$94,585	\$0	96.09%
4.06 Postage, Printing & Advertising					
UNCOMMITTED	\$1	\$0	\$0	\$0	
AMERICAN REPROGRAPHICS CO LLC	\$7,630	\$7,630	\$7,630	\$0	100.00%
SOUTHERN CALIFORNIA NEWS GROUP	\$1,264	\$1,264	\$1,264	\$0	100.00%
	\$8,895	\$8,894	\$8,894	\$0	99.99%
4.07 DSA Inspection (IOR)					
UNCOMMITTED	\$0	\$0	\$0	\$0	
KNOWLAND CONSTRUCTION SERVICES	\$104,480	\$104,480	\$96,985	\$0	92.83%
	\$104,480	\$104,480	\$96,985	\$0	92.83%
4.08 DSA Construction Phase Testing (LOR)					
UNCOMMITTED	\$0	\$0	\$0	\$0	
NINYO & MOORE	\$113,255	\$113,255	\$112,544	\$0	99.37%
	\$113,255	\$113,255	\$112,544	\$0	99.37%
4.11 Preliminary Testing (Hazmat, Topo, Geo, etc)					
UNCOMMITTED	\$0	\$0	\$0	\$0	
ENVIRONMENTAL NETWORK CORPORATION	\$9,100	\$9,100	\$9,012	\$0	99.03%
	\$9,100	\$9,100	\$9,012	\$0	99.03%
Total 392-9520 Orange HS Site Improvements (DSA 04-116673)	\$8,108,482	\$8,104,629	\$8,081,083	\$0	99.66%
392-9520 Orange HS Phase II Planning and Design					
1. Design Cost					
1.01 Architect					
UNCOMMITTED	\$121,050	\$0	\$0	\$0	
LIONAKIS	\$1,409,450	\$1,409,450	\$791,568	\$107,623	56.16%
	\$1,530,500	\$1,409,450	\$791,568	\$107,623	51.72%
3. Program and Construction Management					
3.01 Program Management Fees					



Measure S Bond Program

Financial Report for May 2021

Budget vs Actuals - By School and Budget Category with Vendor Detail

QSS Data thru 5/31/2021

	Budget	Contracted to Date	Expended to Date	Quarterly Expense Apr '21 - Jun '21	% Expended
UNCOMMITTED	\$1	\$0	\$0	\$0	
CUMMING CONSTRUCTION MGMT INC	\$49,836	\$49,836	\$33,556	\$11,346	67.33%
	\$49,837	\$49,836	\$33,556	\$11,346	67.33%
3.02 Construction Management Fees					
UNCOMMITTED	\$2,100	\$0	\$0	\$0	
CORDOBA CORPORATION	\$369,950	\$369,950	\$0	\$0	0.00%
	\$372,050	\$369,950	\$0	\$0	0.00%
4. Construction Support Costs					
4.05 DSA Review Fees					
UNCOMMITTED	\$0	\$0	\$0	\$0	
DIVISION OF STATE ARCHITECT	\$153,550	\$153,550	\$153,550	\$153,550	100.00%
	\$153,550	\$153,550	\$153,550	\$153,550	100.00%
4.06 Postage, Printing & Advertising					
UNCOMMITTED	\$0	\$0	\$0	\$0	
AMERICAN REPROGRAPHICS CO LLC	\$14,000	\$14,000	\$0	\$0	0.00%
	\$14,000	\$14,000	\$0	\$0	0.00%
4.11 Preliminary Testing (Hazmat, Topo, Geo, etc)					
UNCOMMITTED	\$80,895	\$0	\$0	\$0	
CANNON CORPORATION	\$50,000	\$50,000	\$35,076	\$0	70.15%
ENVIRONMENTAL NETWORK CORPORATION	\$15,380	\$15,380	\$6,350	\$6,350	41.29%
	\$146,275	\$65,380	\$41,426	\$6,350	28.32%
Total 392-9520 Orange HS Phase II Planning and Design	\$2,266,212	\$2,062,166	\$1,020,100	\$278,868	45.01%
392-TBD Orange HS Science Center Unallocated Funds F22					
5. Unallocated Bond Funds					
5.04 Unallocated Bond Funds					
UNCOMMITTED	\$1,520,780	\$0	\$0	\$0	
	\$1,520,780	\$0	\$0	\$0	0.00%
Total 392-TBD Orange HS Science Center Unallocated Funds F22	\$1,520,780	\$0	\$0	\$0	0.00%
392-9520 Orange HS Unallocated Funds F21					
5. Program Reserve					
5.03 Interest Earned - Reserve					
UNCOMMITTED	\$840,506	\$0	\$0	\$0	
	\$840,506	\$0	\$0	\$0	0.00%

4. Construction Support Costs

4.15 Miscellaneous Fees



Measure S Bond Program

Financial Report for May 2021

Budget vs Actuals - By School and Budget Category with Vendor Detail

QSS Data thru 5/31/2021

	Budget	Contracted to Date	Expended to Date	Quarterly Expense Apr '21 - Jun '21	% Expended
UNCOMMITTED	\$0	\$0	\$0	\$0	
OUSD COST OF INTEREST DISTRIBUTION	\$25,457	\$25,457	\$25,457	\$0	100.00%
	\$25,457	\$25,457	\$25,457	\$0	100.00%
Total 392-9520 Orange HS Unallocated Funds F21	\$865,963	\$25,457	\$25,457	\$0	2.94%
392-TBD Orange HS Unallocated Funds F22					
5. Unallocated Bond Funds					
5.04 Unallocated Bond Funds					
UNCOMMITTED	\$17,978,844	\$0	\$0	\$0	
	\$17,978,844	\$0	\$0	\$0	0.00%
Total 392-TBD Orange HS Unallocated Funds F22	\$17,978,844	\$0	\$0	\$0	0.00%
Orange High School	\$72,865,963	\$44,496,169	\$42,297,359	\$431,906	58.05%
Villa Park High School					
394-0000 Villa Park HS IP Surveillance Camera and Systems					
4. Construction Support Costs					
4.13 FF&E (Laboratory Tables and Chairs, other)					
UNCOMMITTED	\$0	\$0	\$0	\$0	
CDW GOVERNMENT INC (Parts for IP Camera Systems)	\$32,182	\$32,182	\$32,182	\$0	100.00%
DIGITAL NETWORKS GROUP INC (F/I IP Camera Software)	\$8,635	\$8,635	\$8,635	\$0	100.00%
INTER-PACIFIC INC	\$22,133	\$22,133	\$22,133	\$0	100.00%
	\$62,949	\$62,949	\$62,949	\$0	100.00%
Total 394-0000 Villa Park HS IP Surveillance Camera and Systems	\$62,949	\$62,949	\$62,949	\$0	100.00%
394-9520 Villa Park HS Science Center (DSA 04-117022)					
1. Design Cost					
1.01 Architect					
UNCOMMITTED	\$139,796	\$0	\$0	\$0	
DKS ASSOCIATES	\$78,310	\$78,310	\$74,310	\$0	94.89%
LIONAKIS	\$14,059	\$14,059	\$14,059	\$0	100.00%
LPA INC	\$2,472,131	\$2,472,131	\$2,287,352	\$109,837	92.53%
	\$2,704,296	\$2,564,500	\$2,375,721	\$109,837	87.85%
2. Construction Cost					
2.01 Construction					
UNCOMMITTED	\$138,538	\$0	\$0	\$0	
ANGELES CONTRACTOR, INC	\$20,232,690	\$20,232,690	\$9,688,130	\$1,124,202	47.88%



Measure S Bond Program

Financial Report for May 2021

Budget vs Actuals - By School and Budget Category with Vendor Detail

QSS Data thru 5/31/2021

	Budget	Contracted to Date	Expended to Date	Quarterly Expense Apr '21 - Jun '21	% Expended
2.02 OFCI and Other Construction	\$20,371,228	\$20,232,690	\$9,688,130	\$1,124,202	47.56%
UNCOMMITTED	\$148,781	\$0	\$0	\$0	
ACCO ENGINEERED SYSTEMS INC	\$150,829	\$150,829	\$127,947	\$0	84.83%
AMERICAN REPROGRAPHICS CO LLC	\$1,026	\$1,026	\$0	\$0	0.00%
ARROW RESTAURANT EQUIPMENT	\$13,887	\$13,887	\$13,869	\$0	99.86%
CAROLINA BIOLOGICAL SUPPLY	\$24,213	\$24,213	\$0	\$0	0.00%
DEVELOPMENT GROUP INC	\$16,057	\$16,057	\$16,057	\$0	100.00%
FISHER SCIENCE EDUCATION	\$26,187	\$26,187	\$21,027	\$0	80.29%
FLINN SCIENTIFIC INC	\$12,364	\$12,364	\$0	\$0	0.00%
WW GRAINGER INC	\$2,923	\$2,923	\$110	\$0	3.75%
	\$396,269	\$247,488	\$179,009	\$0	45.17%
3. Program and Construction Management					
3.01 Program Management Fees					
UNCOMMITTED	\$254,669	\$0	\$0	\$0	
CORDOBA CORPORATION	\$0	\$0	\$0	\$0	
CUMMING CONSTRUCTION MGMT INC	\$811,112	\$909,524	\$719,360	\$13,144	88.69%
	\$1,065,781	\$909,524	\$719,360	\$13,144	67.50%
3.02 Construction Management Fees					
UNCOMMITTED	\$6,082	\$0	\$0	\$0	
CORDOBA CORPORATION	\$1,998,493	\$1,998,493	\$1,828,441	\$179,153	91.49%
	\$2,004,575	\$1,998,493	\$1,828,441	\$179,153	91.21%
4. Construction Support Costs					
4.01 Rental					
UNCOMMITTED	\$0	\$0	\$0	\$0	
	\$0	\$0	\$0	\$0	0.00%
4.02 Title, Environmental, Stormwater Management					
UNCOMMITTED	\$36,668	\$0	\$0	\$0	
CHICAGO TITLE COMPANY	\$750	\$750	\$750	\$0	100.00%
OUSD COST OF INTEREST DISTRIBUTION	\$1	\$1	\$1	\$0	100.00%
PLACEWORKS INC	\$87,059	\$87,059	\$73,237	\$0	84.12%
STATE WATER RESOURCES CONTROL BOARD (SWRCB)	\$484	\$484	\$484	\$0	100.00%
	\$124,962	\$88,294	\$74,471	\$0	59.60%
4.03 Commissioning					
UNCOMMITTED	\$9,722	\$0	\$0	\$0	
P2S ENGINEERING INC	\$31,635	\$31,635	\$26,014	\$0	82.23%
	\$41,357	\$31,635	\$26,014	\$0	62.90%
4.04 Builders Risk Insurance					
UNCOMMITTED	\$0	\$0	\$0	\$0	



Measure S Bond Program
Financial Report for May 2021
Budget vs Actuals - By School and Budget Category with Vendor Detail

QSS Data thru 5/31/2021

	Budget	Contracted to Date	Expended to Date	Quarterly Expense Apr '21 - Jun '21	% Expended
	\$0	\$0	\$0	\$0	
4.05 DSA Review Fees					
UNCOMMITTED	\$117,302	\$0	\$0	\$0	
DIVISION OF STATE ARCHITECT	\$289,250	\$289,250	\$289,250	\$0	100.00%
	\$406,552	\$289,250	\$289,250	\$0	71.15%
4.06 Postage, Printing & Advertising					
UNCOMMITTED	\$12,273	\$0	\$0	\$0	
AMERICAN REPROGRAPHICS CO LLC	\$19,506	\$19,506	\$12,630	\$0	64.75%
SOUTHERN CALIFORNIA NEWS GROUP	\$1,768	\$1,768	\$1,768	\$0	100.00%
	\$33,548	\$21,274	\$14,398	\$0	42.92%
4.07 DSA Inspection (IOR)					
UNCOMMITTED	\$176,761	\$0	\$0	\$0	
BPI INSPECTION SERVICE	\$273,615	\$273,615	\$273,615	\$0	100.00%
	\$450,376	\$273,615	\$273,615	\$0	60.75%
4.08 DSA Construction Phase Testing (LOR)					
UNCOMMITTED	\$256,265	\$0	\$0	\$0	
NINYO & MOORE	\$534,755	\$534,755	\$534,755	\$0	100.00%
	\$791,020	\$534,755	\$534,755	\$0	67.60%
4.09 Relocation					
UNCOMMITTED	\$16,551	\$0	\$0	\$0	
Beltmann Group, Inc.	\$6,229	\$6,229	\$0	\$0	0.00%
ULINE INC	\$1,860	\$1,860	\$0	\$0	0.00%
	\$24,640	\$8,089	\$0	\$0	0.00%
4.10 Labor Compliance					
UNCOMMITTED	\$0	\$0	\$0	\$0	
	\$0	\$0	\$0	\$0	
4.11 Preliminary Testing (Hazmat, Topo, Geo, etc)					
UNCOMMITTED	\$1,657	\$0	\$0	\$0	
CALIFORNIA GEOLOGICAL SURVEY (Geology and Seismology Review)	\$3,600	\$3,600	\$3,600	\$0	100.00%
ENVIRONMENTAL NETWORK CORPORATION	\$19,215	\$19,215	\$19,085	\$0	99.32%
LEIGHTON CONSULTING INC (Geotechnical Engineering)	\$20,000	\$20,000	\$16,549	\$0	82.75%
PSOMAS	\$27,000	\$27,000	\$21,034	\$0	77.90%
RMA GROUP (dba SITESCAN)	\$53,125	\$53,125	\$44,890	\$0	84.50%
SPECTRUM FIRE PROTECTION (Fire Hydrant Flow Test)	\$1,000	\$1,000	\$1,000	\$0	100.00%
	\$125,597	\$123,940	\$106,158	\$0	84.52%
4.12 Utility Connection Fees (Local Permits)					
UNCOMMITTED	\$78,827	\$0	\$0	\$0	
SOUTHERN CALIFORNIA EDISON	\$400	\$400	\$400	\$0	100.00%
STATE WATER RESOURCES CONTROL BOARD (SWRCB)	\$1,678	\$1,678	\$1,678	\$553	100.00%
	\$80,905	\$2,078	\$2,078	\$553	2.57%



Measure S Bond Program
Financial Report for May 2021
Budget vs Actuals - By School and Budget Category with Vendor Detail

QSS Data thru 5/31/2021

	Budget	Contracted to Date	Expended to Date	Quarterly Expense Apr '21 - Jun '21	% Expended
4.13 FF&E (Laboratory Tables and Chairs, other)					
UNCOMMITTED	\$90,622	\$0	\$0	\$0	
CDW GOVERNMENT INC (Parts for IP Camera Systems)	\$59,662	\$65,624	\$0	\$0	0.00%
CULVER-NEWLIN INC	\$12,359	\$12,359	\$12,359	\$0	100.00%
INTER-PACIFIC INC	\$7,325	\$7,325	\$7,325	\$0	100.00%
SIERRA SCHOOL EQUIPMENT COMPANY	\$485,250	\$485,250	\$0	\$0	0.00%
TURTLE STORAGE dba AMERICAN BICYCLE CO	\$6,871	\$6,871	\$6,871	\$0	100.00%
VWR INTERNATIONAL LLC	\$47,922	\$52,714	\$8,873	\$0	18.52%
	\$710,011	\$630,143	\$35,428	\$0	4.99%
4.14 Legal Counsel					
UNCOMMITTED	\$33,146	\$0	\$0	\$0	
	\$33,146	\$0	\$0	\$0	0.00%
5. Contingency					
5.01 Construction Contingency					
UNCOMMITTED	\$1,135,815	\$0	\$0	\$0	
	\$1,135,815	\$0	\$0	\$0	0.00%
5.02 Project Contingency					
UNCOMMITTED	\$7,806,929	\$0	\$0	\$0	
	\$7,806,929	\$0	\$0	\$0	0.00%
Total 394-9520 Villa Park HS Science Center (DSA 04-117022)	\$38,307,006	\$27,955,768	\$16,146,828	\$1,426,889	42.15%
394-9520 Villa Park HS Interim Housing (DSA 04-116788)					
1. Design Cost					
1.01 Architect					
UNCOMMITTED	\$0	\$0	\$0	\$0	
LPA INC	\$70,000	\$70,000	\$70,000	\$0	100.00%
	\$70,000	\$70,000	\$70,000	\$0	100.00%
2. Construction Cost					
2.01 Construction					
UNCOMMITTED	\$0	\$0	\$0	\$0	
ANGELES CONTRACTOR, INC	\$1,074,556	\$1,074,556	\$1,074,556	\$0	100.00%
	\$1,074,556	\$1,074,556	\$1,074,556	\$0	100.00%
2.02 OFCI and Other Construction					
UNCOMMITTED	\$0	\$0	\$0	\$0	
ACCO ENGINEERED SYSTEMS INC	\$36,527	\$36,527	\$36,527	\$0	100.00%
	\$36,527	\$36,527	\$36,527	\$0	100.00%
4. Construction Support Costs					



Measure S Bond Program
Financial Report for May 2021
Budget vs Actuals - By School and Budget Category with Vendor Detail

QSS Data thru 5/31/2021

	Budget	Contracted to Date	Expended to Date	Quarterly Expense Apr '21 - Jun '21	% Expended
4.01 Rental					
UNCOMMITTED	\$1	\$0	\$0	\$0	
ELITE MODULAR LEASING & SALES INC	\$567,326	\$567,326	\$499,726	\$123,244	88.08%
	\$567,327	\$567,326	\$499,726	\$123,244	88.08%
4.05 DSA Review Fees					
UNCOMMITTED	\$0	\$0	\$0	\$0	
DIVISION OF STATE ARCHITECT	\$24,163	\$24,163	\$24,163	\$0	100.00%
	\$24,163	\$24,163	\$24,163	\$0	100.00%
4.07 DSA Inspection (IOR)					
UNCOMMITTED	\$0	\$0	\$0	\$0	
BPI INSPECTION SERVICE	\$43,265	\$43,265	\$43,265	\$0	100.00%
	\$43,265	\$43,265	\$43,265	\$0	100.00%
4.08 DSA Construction Phase Testing (LOR)					
UNCOMMITTED	\$0	\$0	\$0	\$0	
NINYO & MOORE	\$41,908	\$41,908	\$41,908	\$0	100.00%
	\$41,908	\$41,908	\$41,908	\$0	100.00%
4.09 Relocation					
UNCOMMITTED	\$0	\$0	\$0	\$0	
Beltmann Group, Inc.	\$4,640	\$4,640	\$4,640	\$0	100.00%
	\$4,640	\$4,640	\$4,640	\$0	100.00%
Total 394-9520 Villa Park HS Interim Housing (DSA 04-116788)	\$1,862,385	\$1,862,385	\$1,794,785	\$123,244	96.37%
394-9520 Villa Park HS Parking and Drop Off (DSA 04-118521)					
1. Design Cost					
1.01 Architect					
UNCOMMITTED	\$0	\$0	\$0	\$0	
LPA INC	\$107,305	\$107,305	\$59,506	\$0	55.45%
	\$107,305	\$107,305	\$59,506	\$0	55.45%
2. Construction Cost					
2.01 Construction					
UNCOMMITTED	\$0	\$0	\$0	\$0	
ANGELES CONTRACTOR, INC	\$2,750,000	\$2,750,000	\$2,585,479	\$0	94.02%
	\$2,750,000	\$2,750,000	\$2,585,479	\$0	94.02%
4. Construction Support Costs					
4.05 DSA Review Fees					
UNCOMMITTED	\$5,233	\$0	\$0	\$0	
DIVISION OF STATE ARCHITECT	\$37,450	\$37,450	\$37,450	\$0	100.00%
	\$42,683	\$37,450	\$37,450	\$0	87.74%



Measure S Bond Program
Financial Report for May 2021
Budget vs Actuals - By School and Budget Category with Vendor Detail

QSS Data thru 5/31/2021

	Budget	Contracted to Date	Expended to Date	Quarterly Expense Apr '21 - Jun '21	% Expended
4.06 Postage, Printing & Advertising					
UNCOMMITTED	\$0	\$0	\$0	\$0	
AMERICAN REPROGRAPHICS CO LLC	\$476	\$476	\$476	\$0	100.00%
	\$476	\$476	\$476	\$0	100.00%
4.07 DSA Inspection (IOR)					
UNCOMMITTED	\$0	\$0	\$0	\$0	
BPI INSPECTION SERVICE	\$44,880	\$44,880	\$40,074	\$0	89.29%
	\$44,880	\$44,880	\$40,074	\$0	89.29%
4.08 DSA Construction Phase Testing (LOR)					
UNCOMMITTED	\$0	\$0	\$0	\$0	
NINYO & MOORE	\$45,905	\$45,905	\$44,248	\$0	96.39%
	\$45,905	\$45,905	\$44,248	\$0	96.39%
Total 394-9520 Villa Park HS Parking and Drop Off (DSA 04-118521)	\$2,991,250	\$2,986,016	\$2,767,232	\$0	92.51%
394-9520 Villa Park HS Phase II (DSA 04-119694)					
1. Design Cost					
1.01 Architect					
UNCOMMITTED	\$0	\$0	\$0	\$0	
LPA INC	\$1,877,000	\$1,877,000	\$930,083	\$10,796	49.55%
	\$1,877,000	\$1,877,000	\$930,083	\$10,796	49.55%
3. Program and Construction Management					
3.01 Program Management Fees					
UNCOMMITTED	\$261,668	\$0	\$0	\$0	
CUMMING CONSTRUCTION MGMT INC	\$58,462	\$58,462	\$39,365	\$13,309	67.33%
	\$320,130	\$58,462	\$39,365	\$13,309	12.30%
3.02 Construction Management Fees					
UNCOMMITTED	\$17,365	\$0	\$0	\$0	
CORDOBA CORPORATION	\$206,396	\$206,396	\$0	\$0	0.00%
	\$223,761	\$206,396	\$0	\$0	0.00%
4. Construction Support Costs					
4.03 Commissioning					
UNCOMMITTED	\$8,429	\$0	\$0	\$0	
	\$8,429	\$0	\$0	\$0	0.00%
4.05 DSA Review Fees					
UNCOMMITTED	\$0	\$0	\$0	\$0	
DIVISION OF STATE ARCHITECT	\$188,750	\$188,750	\$188,750	\$0	100.00%
	\$188,750	\$188,750	\$188,750	\$0	100.00%
4.06 Postage, Printing & Advertising					



Measure S Bond Program

Financial Report for May 2021

Budget vs Actuals - By School and Budget Category with Vendor Detail

QSS Data thru 5/31/2021

	Budget	Contracted to Date	Expended to Date	Quarterly Expense Apr '21 - Jun '21	% Expended
UNCOMMITTED	\$0	\$0	\$0	\$0	
AMERICAN REPROGRAPHICS CO LLC	\$8,000	\$8,000	\$0	\$0	0.00%
	\$8,000	\$8,000	\$0	\$0	0.00%
4.11 Preliminary Testing (Hazmat, Topo, Geo, etc)					
UNCOMMITTED	\$30,233	\$0	\$0	\$0	
ENVIRONMENTAL NETWORK CORPORATION	\$10,860	\$10,860	\$4,640	\$4,640	42.73%
NINYO & MOORE	\$30,000	\$30,000	\$0	\$0	0.00%
PSOMAS	\$26,550	\$26,550	\$26,550	\$0	100.00%
	\$97,643	\$67,410	\$31,190	\$4,640	31.94%
Total 394-9520 Villa Park HS Phase II (DSA 04-119694)	\$2,723,713	\$2,406,018	\$1,189,387	\$28,745	43.67%
394-TBD Villa Park HS Science Center Unallocated Funds F22					
5. Unallocated Bond Funds					
5.04 Unallocated Bond Funds					
UNCOMMITTED	\$1,192,646	\$0	\$0	\$0	
	\$1,192,646	\$0	\$0	\$0	0.00%
Total 394-TBD Villa Park HS Science Center Unallocated Funds F22	\$1,192,646	\$0	\$0	\$0	0.00%
394-9520 Villa Park Unallocated Funds F21					
4. Construction Support Costs					
4.15 Miscellaneous Fees					
UNCOMMITTED	\$0	\$0	\$0	\$0	
OUSD COST OF INTEREST DISTRIBUTION	\$20,426	\$20,426	\$20,426	\$0	100.00%
	\$20,426	\$20,426	\$20,426	\$0	100.00%
5. Program Reserve					
5.03 Interest Earned - Reserve					
UNCOMMITTED	\$0	\$0	\$0	\$0	
	\$0	\$0	\$0	\$0	
Total 394-9520 Villa Park Unallocated Funds F21	\$20,426	\$20,426	\$20,426	\$0	100.00%
394-TBD Villa Park Unallocated Funds F22					
5. Unallocated Bond Funds					
5.04 Unallocated Bond Funds					
UNCOMMITTED	\$25,538,287	\$0	\$0	\$0	
	\$25,538,287	\$0	\$0	\$0	0.00%
Total 394-TBD Villa Park Unallocated Funds F22	\$25,538,287	\$0	\$0	\$0	0.00%



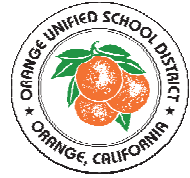
Measure S Bond Program

Financial Report for May 2021

Budget vs Actuals - By School and Budget Category with Vendor Detail

QSS Data thru 5/31/2021

	Budget	Contracted to Date	Expended to Date	Quarterly Expense Apr '21 - Jun '21	% Expended
Villa Park High School	\$72,698,662	\$35,293,562	\$21,981,607	\$1,578,878	30.24%

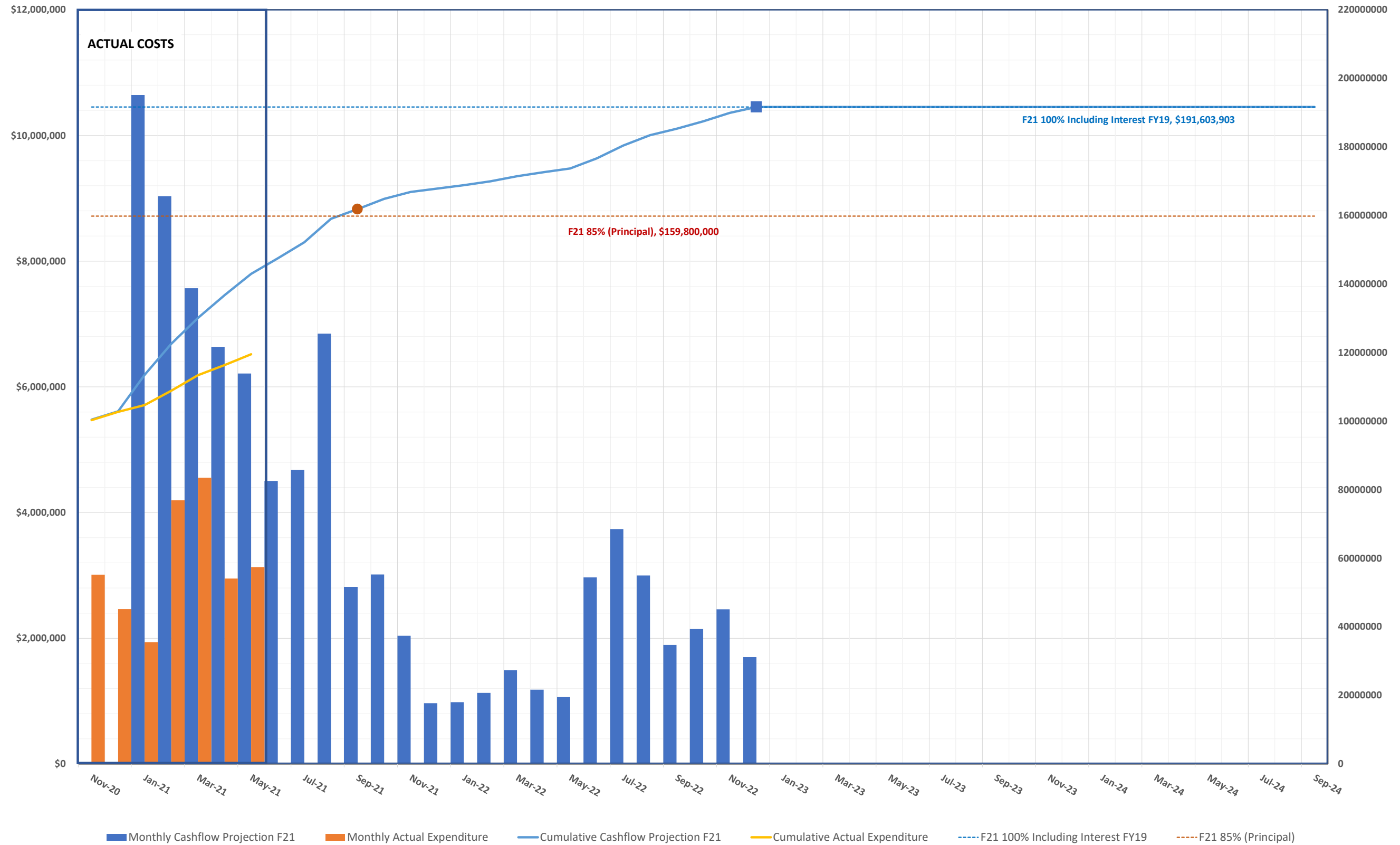


3.2 CASH FLOW PROJECTIONS

MEASURE S BOND PROGRAM - Series A 2018 CASH FLOW PROJECTION (Phase I and II)

Actual Costs thru May 31, 2021

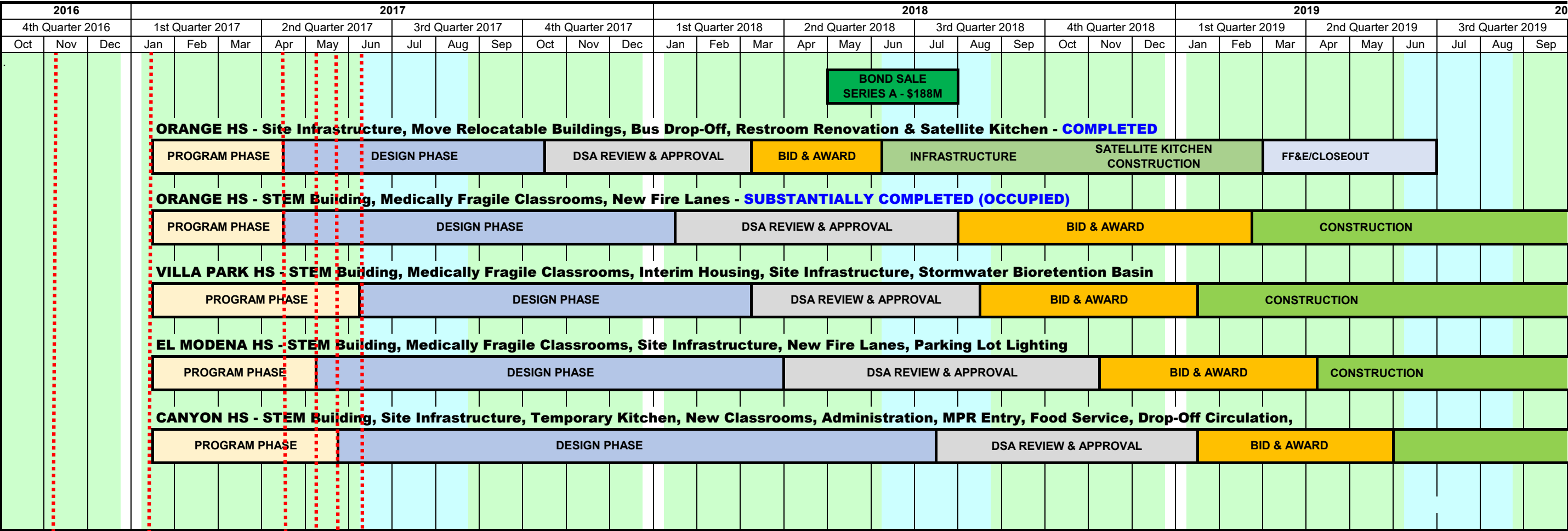
Fund 21 Planned Costs Projected as of December 31, 2020



4.0 PROGRAM SUMMARY SCHEDULE



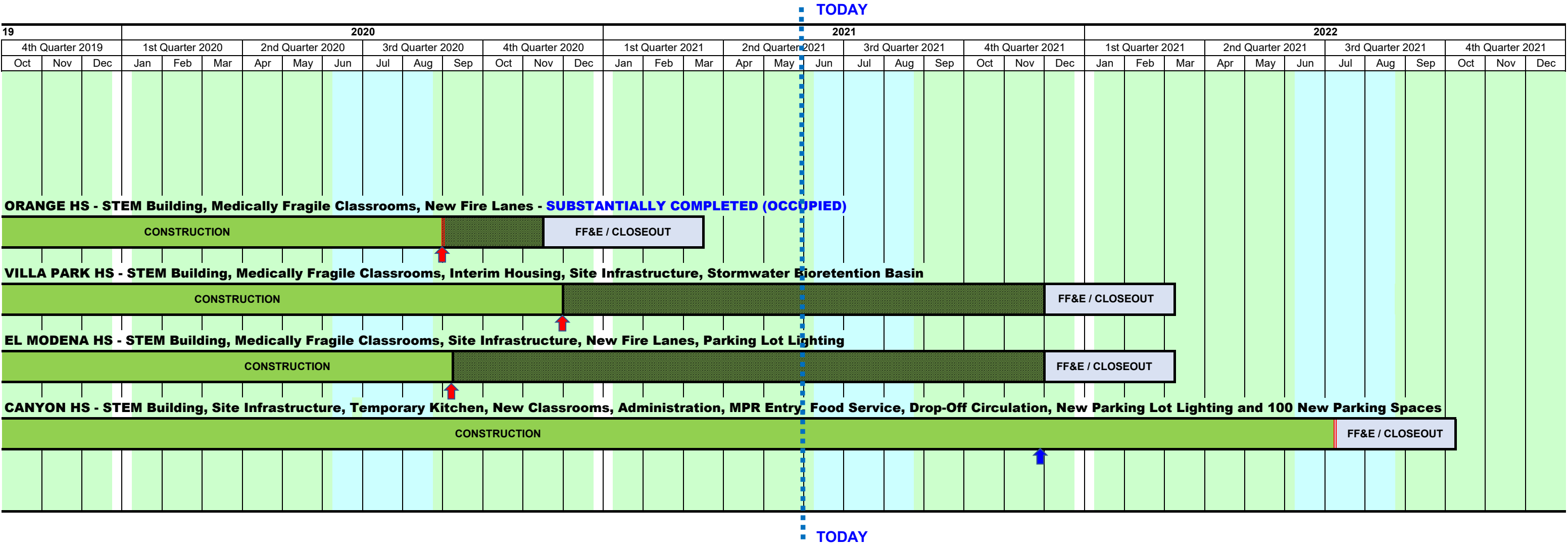
MEASURE S BOND PROGRAM - PHASE I: SCHEDULE SUMMARY



- Villa Park HS Schematic Design & Budget Board Approved 6/8/17
- Canyon HS Schematic Design & Budget Board Approved 5/25/17
- El Modena HS Schematic Design & Budget Board Approved 5/11/17
- Orange HS Schematic Design & Budget Board Approved 4/13/17
- Program Manager Starts Work 1/17/17
- Bond Measure S Passes by 62% on 11/8/16



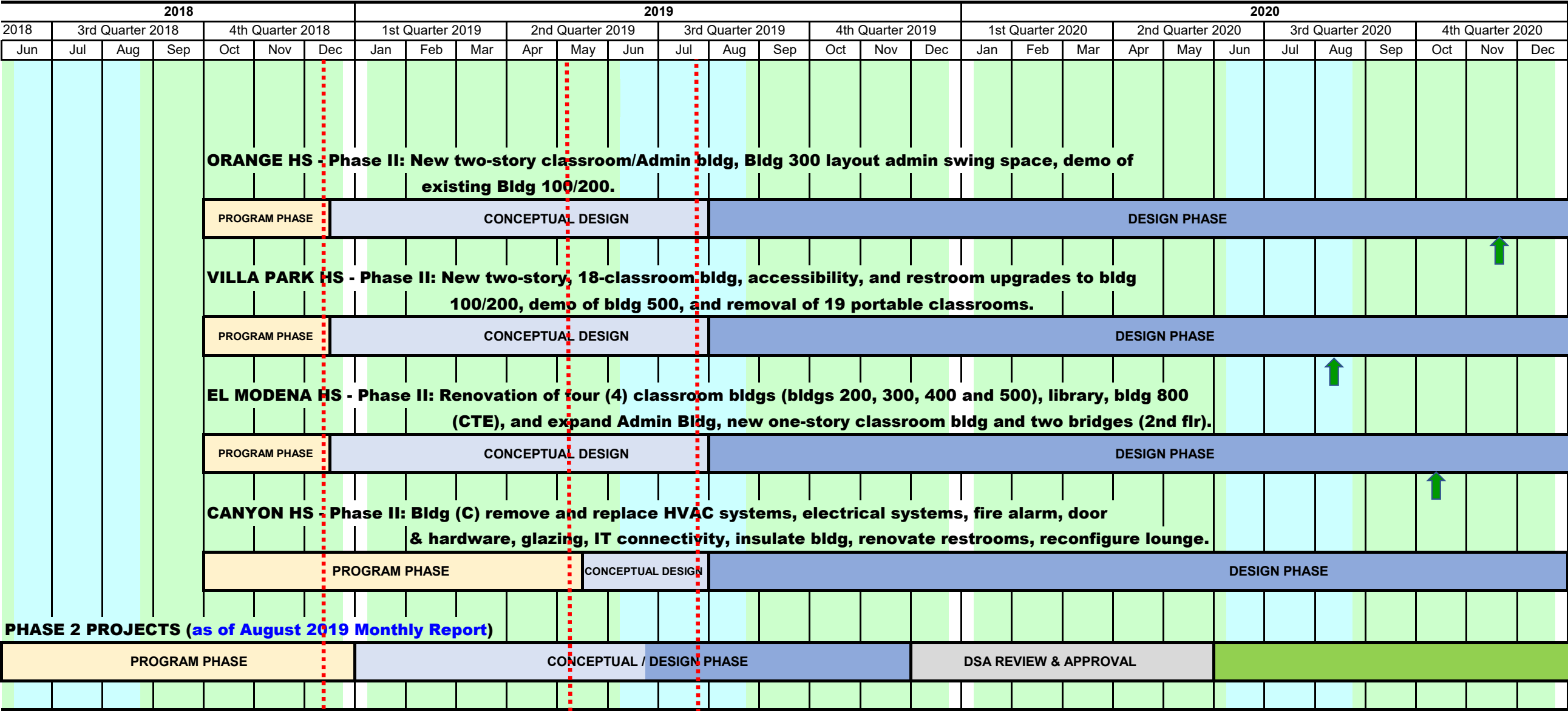
MEASURE S BOND PROGRAM - PHASE I: SCHEDULE SUMMARY



- SUMMER BREAK
- There is a date under legal negotiation (see monthly report) that may extend this substantial completion date (*the dashed section is the extension under review*).
- There has been a Substantial Completion date change approved by the Board of Education (*see under specific project for the Change Order # referenced*).
- STEM Building Substantial Completion



MEASURE S BOND PROGRAM - PHASE II: SCHEDULE SUMMARY



SUMMER BREAK

Conceptual Design Board Approved 12/13/18

Conceptual Design Board Approved 5/9/19 for Canyon HS

Phase II Design & Budget Board Approved 7/25/19

Orange HS

El Modena HS

Villa Park HS

Orange HS

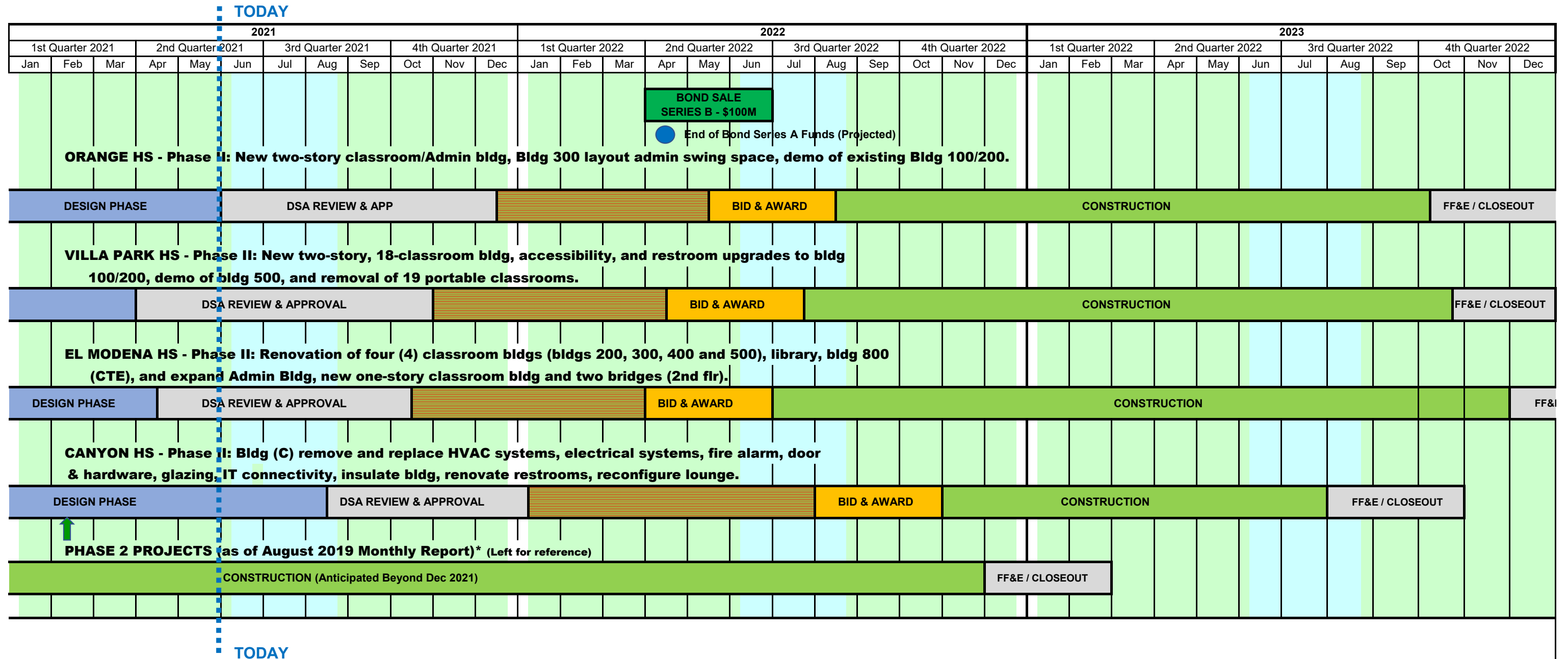
El Modena HS

Villa Park HS

Canyon HS



MEASURE S BOND PROGRAM - PHASE II: SCHEDULE SUMMARY



— SUMMER BREAK



— EXTENDED CONSTRUCTION START
(for Phase II Bond Award)



— Phase II Design Document & Construction Estimate Board Approval (Completed)

Orange HS - November 19, 2020 Board Meeting

El Modena HS - October 15, 2020 Board Meeting

Villa Park HS - August 13, 2020 Board Meeting

Canyon HS - February 11, 2021 Board Meeting

Board of Education

Kathryn A. Moffat, President
Andrea Yamasaki, Vice-President
Kris Erickson, Clerk
Rick Ledesma
John Ortega
Ana Page
Angie Schlueter-Rumsey

Gunn Marie Hansen, Ph.D.
Superintendent

David A. Rivera
**Assistant Superintendent/CBO
Business Services**

Scott Harvey
**Senior Executive Director
Administrative Services**



Facilities & Planning Department
Measure S Bond Program
726 W. Collins Avenue
Orange, CA 92867
T: (714) 628-4500