



ORANGE UNIFIED SCHOOL DISTRICT

Measure S Bond Program

December 2020 Monthly Progress Report



PERIOD COVERED:

December 1-31, 2020

FISCAL YEAR

FY 2020-2021

PROGRESS REPORT NO.

PR-042-2021-042

PREPARED BY:

CUMMING
Building Value Through Expertise



TABLE OF CONTENTS

1.0 Executive Summary

1.1 Program Summary

1.2 Program Highlights/Key Milestones

1.3 Look Ahead (next 90 days)

2.0 Project Status Report

Canyon HS – Science Center

El Modena HS – Science Center

Orange HS – Utility Infrastructure (Increment # 1)

Orange HS – Science Center (Increment # 2)

Villa Park HS – Interim Housing & Science Center

3.0 Financial Report

3.1 Project Cost Estimate

- Budget vs Actuals with Vendor details per High School

3.2 Cash Flow Projections

4.0 Program Schedule Summary

4.1 Phase I Schedule Summary

4.2 Phase II Schedule Summary



1.0 EXECUTIVE SUMMARY

1.1 Program Summary

Division of State Architects (DSA) approval to establish design criteria completed as follows:

- (Completed) October 24, 2019 - Villa Park HS New Parking and Drop Off (04-118521).
- (Completed) June 25, 2019 - Orange HS Custom Tensile Fabric Shade Structures (04-118351)
- (Completed) May 2, 2019 - Canyon HS Interim Modular Kitchen (04-118418)
- (Completed) January 31, 2019 - Canyon HS Science Center (04-117300)
- (Completed) November 6, 2018 - El Modena HS Science Center (04-117098)
- (Completed) August 16, 2018 - Villa Park HS Science Center (04-117022)
- (Completed) July 12, 2018 - Orange HS Science Center (Increment # 2) (04-116859)
- (Completed) April 10, 2018 - Orange HS Increment # 1 (Satellite Kitchen) (04-116673.2)
- (Completed) March 1, 2018 - Orange HS Increment #1 (Infrastructure Upgrades, Move Relocatable Buildings, Bus Drop-Off, Restroom Renovation Project) (04-116673.1)
- (Completed) February 7, 2018 - Villa Park HS Interim Housing (DSA Application #04-116788)

Construction started / completed, as follows:

- (Construction Start - June 15, 2018
 - **Completed** September 4, 2019 – Orange HS Site Infrastructure (Increment #1) (04-116673.1)
- (Construction Start) June 12, 2019 – Canyon HS Science Center
 - **Completed** August 7, 2020 – Interim Modular Kitchen (04-118418)
- (Construction Start) April 2, 2019 – El Modena HS Science Center
- (Construction Start) February 18, 2019 – Orange HS Science Center (Increment #2)
 - **Completed** April 8, 2020 – Custom Tensile Fabric Shade Structure (04-118351)
- (Construction Start) January 7, 2019 – Villa Park HS (Interim Housing and Science Center)
 - **Completed** April 26, 2019 – Install ten Portable Modular Buildings (10) (04-116788)

1.2 Program Highlights/Key Milestones

California Environmental Quality Act (CEQA) Compliance Achieved (as required by law):

- Villa Park HS Science Center – Notice of Exemption (Board approved on 9/20/18).
- Canyon HS Science Center – Notice of Exemption (Board approved on 7/26/18).
- Orange HS Science Center – Notice of Exemption (Board approved on 3/8/18).
- El Modena HS Science Center – Notice of Exemption (Board approved on 3/8/18).

Phase II Measure S Bond Project Development Update:



- As of 12/31/20 the remote design meetings are continuing to be being held with each of the Architectural teams, District, Program Management, Construction Management, and school staff, based on design progress.
 - At Villa Park HS, LPA re-design using the new code and the geotechnical changes, Construction Management is moving forward with the 50% construction cost estimate.
 - At El Modena HS, HED continues with the construction documents phase for El Modena, addressing the review comments received.
 - At Orange HS, Lionakis moving forward to the construction design documents phase.
 - At Canyon HS, Cannon Design continues with the design document phase.
- As of 12/31/20, the topographic and geotechnical surveys needed to assess current site conditions/elevations, provide reporting, and submit any required mapping, for the design preparation of the Phase II design projects, have been provided to each of the design teams per school site.
- As of 12/31/20, the Haz Mat reports and technical specifications have been provided to the design teams per school site for the bid document preparation at each project needed.
- As of 12/31/20, will move forward to secure a CEQA consultant used in Phase I projects to make the final determination of need for each of the four (4) project sites.

Program Wide Cash Flow Projection / Bond Issuance

- As of 12/31/20, we are still using the last cash flow assessment in May 2020, which the current projections of the Phase II projects are based on. The first project nearing completion is the Orange HS, Phase I Science Center project.
- New analysis data on the slow spending in the Phase I program and current market conditions due to the COVID-19 pandemic, it appears that selling Bonds before May 2022 would not be cost effective.

Project Achievements:

- Dec 15, 2020 The Board approved Change Order # 07 for Swinerton at Canyon HS in the amount of; Change Order No. 7: \$194,035.44 – 0 Calendar Days Additional Contract Time; Description: General Contractor costs and time based on proposed change order #'s: 60R3, 66R1, 71R1 and 75, each in the "Unforeseen Conditions Changes" category, and the Board approved Change Order No. 8: \$162,853.79 – 21 Calendar Days Additional Contract Time; reflecting a new Substantial Completion date: January 24, 2022. Description: General Contractor costs and time based on proposed change order #'s: 79, 81, 84, 86, 91, 92, 93, 94, 95, 96, 97, and 21R1, each in the "Unforeseen Conditions Changes" category. Please note that this change order reflects the use of the \$4,035.32/day as the general conditions rate that we negotiated on 6/4/2020 with Swinerton (PCO 21R1).



- Dec 15, 2020 The Board approved Change Order # 08 for Pinner at Orange HS in the amount of; Change Order No. 8: \$79,107.96 – 0 Days Calendar Days Additional Contract Time; Description: General Contractor costs and time based on proposed change order #'s: 48, 92, 97, 106, 109, 110, 111(R1), 112, 113, 114(R1), 115, 116, 117, 118, 119(R1), and 120(R1), covering all three categories.
- Dec 15, 2020 The Board approved Work Authorization # 6 (FY20/21), Contract Amendment # 01 to Balfour Beatty to provide extension of construction administration services from October 31, 2020 to February 28, 2021, needed at Orange HS Science Center project, in the amount of \$60,000 (which includes \$3,429 in reimbursable expense).
- Dec 15, 2020 The Board approved contract Amendment # 7 to HED Architects, to provide extension of construction administration services from July 16, 2020 to March 20, 2021, needed at El Modena HS Science Center project, in the amount of \$264,575 (which includes \$8,615 in reimbursable expense).
- Dec 15, 2020 The Board approved contract Amendment # 3 to P2S, Inc., to perform commissioning services as outlined in the original RFP, for the New Entry to Existing MPR and Administration Conversion to Kitchen Cx, for the commissioning information needed for Canyon High School Science Center, as outlined in their fee proposal dated 06/11/20, in the amount of \$13,400.
- As of 12/31/20, processing payment application # 22 (November) for Pinner (OHS), reflecting **99%** paid overall completion, reflecting **523 calendar days** elapsed.
- As of 12/31/20, processing payment application # 18 (October) for ACI (EMHS) reflecting **58%** paid overall completion, reflecting **273 calendar days** elapsed.
- As of 12/31/20, processing payment application # 19 (September) for ACI (VPHS) reflecting **44%** paid overall completion, reflecting **304 calendar days** elapsed.
- As of 12/31/20, processing payment application # 17 (October) for Swinerton (CHS) reflecting **38%** paid overall completion, reflecting **341 calendar days** elapsed.

1.3 Look Ahead (next 90 days)

Board of Education Agenda

January 21st

1. Recommend approval of Change Order # 05 for Angeles Contractor, Inc. (ACI) at Villa Park HS IH & Science Center in the amount of; Change Order No. 05: <\$3,790.00> – 0 Calendar Days Additional Contract Time. Description: General Contractor costs and time based on proposed change order #: 37, for the additional hours and overtime cost or the period of 10/12 thru



10/16 to review the non-conforming structural correction work performed by ACI, in the “Owner Requested Change in Scope of Work” category 2.

2. Recommend approval of Change Order # 09 for Swinerton Construction at Canyon HS Science Center in the amount of; Change Order No. 09: \$275,821.35 – 51 Calendar Days Additional Contract Time; new Substantial Completion date: March 15, 2022. Description: Unforeseen wet soil conditions and General Contractor costs and time extension for the abatement of the water pipe, based on posed change order #'s: 76R3 and 26R1, both in the “Unforeseen Condition Changes” category 1.
3. Recommend approval for Lionakis architects to move forward to final design of Phase II project at Orange HS,. Held the DSA pre-application meeting and continuing with the design documents on the approved Phase II scope of work.

Program Wide

- Orange HS Science Center – completing final punch list items on the Science Center, in addition to coordinating the final punch list items with the City on the street improvements off Walnut.
- Orange HS Science Center – Secured Board of Education for approval for Lionakis to move forward to final design. Held the DSA pre-application meeting and continuing with the design documents on the approved Phase II scope of work.
- Orange HS Science Center – Prepare to review the Phase II 50% construction cost estimate from the Construction Manager for adherence to budget. Revise the design to conform to budget, if necessary.
- Orange HS Science Center – Move Manger finishing assessment of rooms that were relocated for new occupants (bldg. 400, 500, and 300) and demolition (bldg. 100).
 - Update the school principal of surplus items and work with District E-crew to removed items not needed by the school.
 - Removal of moving boxes to inventory for future projects
- El Modena HS Science Center – Continue the final stages of steel erection completing the NNC items, pouring slabs, setting steel for the decks, and interior utility line runs.
- El Modena HS Science Center –HED moving forward to final design.
- El Modena HS Science Center – Prepare to review the Phase II 50% construction cost estimate from the Construction Manager for adherence to budget. Revise the design to conform to budget, if necessary.
- El Modena HS Science Center – HED to place DSA approved Quad design application (04-119124), into the Phase II plans for bid.



- El Modena HS Science Center – Move Manager continues preparation for relocations (teacher meetings, rooms/items relocating review, moving supplies orders/delivery, hazmat, and surplus items removal), new furniture delivery, and assistance in OFCI delivery.
- Villa Park HS Interim Housing & Science Center – Continue the finalizing of steel erection and completing NNR's, pouring slab on grade, setting steel for the decks, grade beams, columns, footings, interior framing, and utility line runs on the new science center building.
- Villa Park HS Interim Housing & Science Center – Completing final punch list items on the Parking and Drop Off zone (04-118521) work.
- Villa Park HS – Complete the construction design phase development and coordination of specification section for review with District and Program Management. Move to the submission to DSA on the approved Phase II scope of work.
- Villa Park HS Science Center – Prepare to review the Phase II 50% and 95 % construction cost estimates from the Construction Manager for adherence to budget. Revise the design to conform to budget, if necessary.
- Villa Park HS Science Center – District legal is reviewing project team information and prepared letter outlining the outstanding issues, agreements to date and District position moving forward. As a result of further project team discussion, the un-approved substantial completion date has moved to August 2021.
- Villa Park HS Science Center – Move Manager continues preparation for relocations (teacher meetings, rooms/items relocating review, moving supplies orders/delivery, hazmat, and surplus items removal), new furniture delivery, and assistance in OFCI delivery.
- Canyon HS Science Center – Continue with the schematic design on the approved Phase II scope of work. Prepare for presentation to the Board of Education for approval to move forward to final design. Prepare for DSA pre-application meeting.
- Canyon HS Science Center – Prepare to review the Phase II 50% design cost estimates from the Construction Manager for adherence to budget. Revise the design to conform to budget, if necessary.
- Canyon HS Science Center – Reviewing Time Impact Evaluation (TIE # 05) with Gafcon and District.
- Canyon HS Science Center – Move Manager continues preparation for site visit and review of classrooms relocating into the new Science Building in preparation and planning.



2.0 PROJECT STATUS REPORT



Canyon High School
New STEM Building

CANYON HIGH SCHOOL



EL MODENA SCIENCE CENTER

Overall View

HED



Orange High School Science Center



AT VILLA PARK HIGH SCHOOL

LPA



CANYON HS SCIENCE CENTER

- ✓ 12 Laboratory Rooms
- ✓ 12 General Classrooms
- ✓ Student Services
- ✓ New Food Services

- ✓ New Multi-Purpose Room Entry
- ✓ Parking Lot Improvements
- ✓ Infrastructure Upgrade and Improvements
- ✓ Landscape Improvements

Project Update (**Construction**):

- As of 12/31/20, Swinerton continuing with internal utility and wire runs, 2nd floor run penetrations, sidewalk pours, site excavation, grading, parking lot paving, and fencing trenching within the new science center building footprint.
- As of 12/31/20 The negotiated recovery settlement agreement was approved under change order # 08 on the 12/15/20 Board meeting, which outlines the accepted 21 calendar delay days and change the substantial completion date to 01/23/2022.
- As of 12/31/20 The Time Impact Evaluation (TIE # 04) for wet soils issues, and (TIE # 05) for Anchor Bolt issues, are both pursuant to a settlement agreement with involving District, Program Management, Gafcon, and Swinerton executives, will be approved under PCO Record of Negotiation # 76R3 and one issued for Swinerton (PCI # 130).
- As of 12/31/20, to keep construction moving, the following construction directive (CD) was issued:
 - CD # 37 for a not-to-exceed (NTE) price of \$23,000 to provide 34-inch isolation curbs, per RFI 231R1.
- As of 12/31/20, processing payment application # 17 (October) reflecting **38%** paid overall completion, reflecting **341 calendar days** elapsed.

See Construction Photo's below:



Left to right: Awning steel set for the MPR canopy, 1st floor slab on grade set for concrete pour, west ramp prep for concrete pour, steel structure reinforced, curb and gutter site layout.



EL MODENA HS SCIENCE CENTER

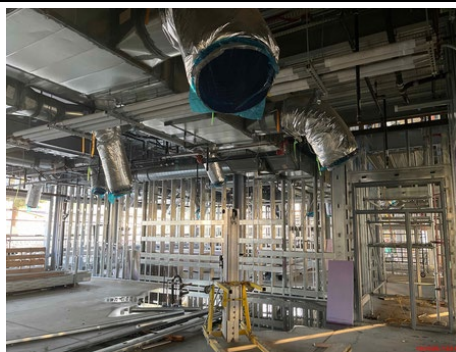
- ✓ 12 Laboratory Rooms
- ✓ 1 General Classrooms
- ✓ 2 Medically Fragile Classrooms

- ✓ Relocation of Campus MDF
- ✓ Technology & Utility Upgrade
- ✓ Landscape Improvements

Project Update (**Construction**):

- As of 12/31/20, Angeles is correcting structural steel issues, correction of continuity and cap plates, reducing the number of NNC issues, setting steel for the decks, beams, columns, footings, interior utility line runs, interior framing, stairs, HVAC ductwork, roof framing and decking penetrations, focusing on the building being watertight.
- As of 12/31/20, As a result of further project team discussion, the un-approved substantial completion date is still set for March 2021.
- As of 12/31/20, Discussions with the project team on adding another assistant IOR to assist in getting this project moving past the old NNC issues and getting them completed.
- On 12/16/20, ACI files a claim for Constructive Directive (CD) #22 (Rooftop Support Post and Doghouse Metal Framing Enclosures), due to Arcadis original response that no cost or time would be considered for this directive.
- On 12/20/20, upcoming SCE electrical shutdown/switchover was successfully conducted:
 - School District Electrician representative was on site at 7AM Sunday 12/20/2020 to open the door to the MSB as well as shutting down the main and the breakers.
 - School District Electrician representative was on site and entire campus was re-energized to ensure all the equipment/buildings are up and running.
- As of 12/31/20, processing payment application # 18 (October) reflecting **58%** paid overall completion, reflecting **273 calendar days** elapsed.

See Construction Photo's below:



Left to right: Steel framing with stairs, interior framing and duct and piping runs (horizontal and vertical), 2nd floor framing interior hallways.



ORANGE HS SCIENCE CENTER

- ✓ 12 Laboratory Rooms
- ✓ 1 General Classrooms

- ✓ New Panther Pavilion Plaza
- ✓ 2 Medically Fragile Classrooms

Project Update Increment # 2 – Science Center (Construction Completion):

- As of 12/31/20, Pinner is preparing the elevator for re-inspection by the City Inspector, completing all punch list work on the interior and exterior of the STEM building, coordinating all final punch list items with the City of Orange on the street improvements off Walnut.
- As of 12/18/20, the Balfour Beatty Construction manager and Inspector of Record, construction trailer was disconnected and removed from site. The CM is residing in room T-24 at Orange HS until the completion of the project.
- As of 12/31/20, preparing the full substantial completion date for Pinner, which will trigger the DSA completion timeframe for the new Science Center building, for full Certificate of Completion.
- As of 12/31/20, Move Manger provided post-move on-site assistance, issuance of room and equipment keys to the school's administration office.
 - Continuation of post-relocation of old rooms review for grouping of surplus items for the principal review and readiness of new occupants/backfill/or demolition (for phase 2 project).
 - Completion and issuance to OHS principal the equipment, appliance, and furniture closeout binder.
- As of 12/31/20, processing payment application # 22 (November), reflecting 99% paid overall completion, reflecting 523 calendar days elapsed.

See Construction Photo's below:



Left to right: Various punch list completion work: exterior landscaping at all locations, exterior stairs finish coat, interior distribution room (IDF) finishes for low voltage applications.





VILLA PARK HIGH SCHOOL

SCHOOL OF EXCELLENCE

VILLA PARK HS SCIENCE CENTER

- ✓ 12 Laboratory Rooms
- ✓ 2 General Classrooms
- ✓ 2 Medically Fragile Classrooms

- ✓ Demolish existing building 300
- ✓ Install 10 New Portable Buildings

Project Update ([Construction](#)):

- As of 12/31/20, Angeles is finalizing steel correction NNC's for continuity, setting steel for the decks, grade beams, columns, footings, interior utility line runs on the new science center building, as well as completing the punch list work for the parking drop off entrance. Coordinating with the City of Villa Park on the final punch list on street signs and other traffic improvements.
- As of 12/18/20, The new Villa Park HS Marquee sign was delivered to the school, installed, and powered up.
- As of 12/31/20, As a result of further project team discussion, the un-approved substantial completion date still reflects June 2021.
- As of 12/31/20, processing payment application # 19 (September) reflecting [44%](#) paid overall completion, reflecting [304 calendar days](#) elapsed.

[See Construction Photo's below:](#)



Left to right: New Marquee sign added to front of school, steel decking for the second floor set for concrete pour, 1st floor slab of grade concrete poured, 2nd floor deck being concrete being poured and set, steel roof decking continues.



3.0 FINANCIAL REPORT

SUMMARY

Measure S Bond Program
Financial Report for December 2020

QSS Data thru 12/31/2020

	Budget	Contracted to Date	Expended to Date	Quarterly Expense Oct '20 - Dec '20	% Expended
PROGRAM					
Phase 1 - HS Science Center	\$204,825,038	\$156,373,708	\$100,499,412	\$12,247,482	49.07%
Phase 2	\$86,778,864	\$6,786,667	\$2,378,619	\$769,921	2.74%
TOTAL	\$291,603,902	\$163,160,374	\$102,878,030	\$13,017,403	35.28%
Canyon High School					
Phase 1 - HS Science Center	\$68,617,380	\$49,157,994	\$22,273,450	\$2,826,260	32.46%
Phase 2	\$4,648,901	\$827,768	\$144,495	\$6,676	3.11%
TOTAL	\$73,266,281	\$49,985,762	\$22,417,945	\$2,832,936	30.60%
El Modena High School					
Phase 1 - HS Science Center	\$40,164,491	\$33,490,646	\$20,250,717	\$2,949,055	50.42%
Phase 2	\$32,608,506	\$2,035,950	\$761,288	\$150,039	2.33%
TOTAL	\$72,772,997	\$35,526,596	\$21,012,005	\$3,099,094	28.87%
Orange High School					
Phase 1 - HS Science Center	\$51,652,876	\$41,550,778	\$40,706,298	\$5,173,510	78.81%
Phase 2	\$21,213,087	\$1,650,811	\$635,932	\$287,199	3.00%
TOTAL	\$72,865,963	\$43,201,589	\$41,342,230	\$5,460,709	56.74%
Villa Park High School					
Phase 1 - HS Science Center	\$44,390,291	\$32,174,291	\$17,268,946	\$1,298,657	38.90%
Phase 2	\$28,308,370	\$2,272,137	\$836,905	\$326,007	2.96%
TOTAL	\$72,698,661	\$34,446,428	\$18,105,851	\$1,624,665	24.91%



Measure S Bond Program

Financial Report for December 2020

Budget vs Actuals - By School and Budget Category with Vendor Detail

QSS Data thru 12/31/2020

	Budget	Contracted to Date	Expended to Date	Quarterly Expense Oct '20 - Dec '20	% Expended
Canyon High School					
390-9520 Canyon HS Science Center (DSA 04-117300)					
1. Design Cost					
1.01 Architect					
UNCOMMITTED	\$13,600	\$0	\$0	\$0	
GKKWORKS CANNON DESIGN	\$3,122,050	\$3,122,050	\$2,864,170	\$54,464	91.74%
LIONAKIS	\$14,058	\$14,058	\$14,058	\$0	100.00%
	\$3,149,708	\$3,136,108	\$2,878,228	\$54,464	91.38%
2. Construction Cost					
2.01 Construction					
UNCOMMITTED	\$1	\$0	\$0	\$0	
SWINERTON BUILDERS	\$37,954,964	\$37,954,964	\$13,756,276	\$2,236,609	36.24%
	\$37,954,965	\$37,954,964	\$13,756,276	\$2,236,609	36.24%
2.02 OFCI and Other Construction					
UNCOMMITTED	\$549,966	\$0	\$0	\$0	
ACCO ENGINEERED SYSTEMS INC	\$159,986	\$159,986	\$128,188	\$0	80.13%
AMERICAN REPROGRAPHICS CO LLC	\$1,026	\$1,026	\$0	\$0	0.00%
CITY OF ANAHEIM - ELECTRICAL ENGINEERING DIV	\$91,340	\$91,340	\$91,340	\$0	100.00%
	\$802,317	\$252,351	\$219,529	\$0	27.36%
3. Program and Construction Management					
3.01 Program Management Fees					
UNCOMMITTED	\$1,002,060	\$0	\$0	\$0	
CUMMING CONSTRUCTION MGMT INC	\$1,198,897	\$2,179,717	\$972,505	\$53,253	81.12%
	\$2,200,957	\$2,179,717	\$972,505	\$53,253	44.19%
3.02 Construction Management Fees					
UNCOMMITTED	\$374,439	\$0	\$0	\$0	
CORDOBA CORPORATION	\$87,836	\$87,836	\$77,489	\$9,990	88.22%
GAFCON INC	\$2,258,845	\$2,431,047	\$1,821,683	\$313,576	80.65%
	\$2,721,119	\$2,518,882	\$1,899,171	\$323,566	69.79%
4. Construction Support Costs					
4.01 Rental					
UNCOMMITTED	\$1	\$0	\$0	\$0	
	\$1	\$0	\$0	\$0	0.00%
4.02 Title, Environmental, Stormwater Management					
UNCOMMITTED	\$57,079	\$0	\$0	\$0	
CHICAGO TITLE COMPANY	\$750	\$750	\$750	\$0	100.00%
CITY OF ANAHEIM	\$2,000	\$2,000	\$2,000	\$0	100.00%
CITY OF ANAHEIM - WATER	\$3,082	\$3,082	\$3,082	\$0	100.00%

COUNTY OF ORANGE - ENVIRONMENTAL HEALTH	\$1,615	\$1,615	\$1,615	\$0	100.00%
ENVIRONMENTAL AUDIT INC	\$50,800	\$50,800	\$21,375	\$0	42.08%
OUSD COST OF INTEREST DISTRIBUTION	\$1	\$1	\$1	\$0	100.00%
	\$115,327	\$58,248	\$28,823	\$0	24.99%
4.03 Commissioning					
UNCOMMITTED	\$9,841	\$0	\$0	\$0	
P2S ENGINEERING INC	\$49,202	\$49,202	\$31,292	\$2,530	63.60%
	\$59,043	\$49,202	\$31,292	\$2,530	53.00%
4.04 Builders Risk Insurance					
UNCOMMITTED	\$0	\$0	\$0	\$0	
	\$0	\$0	\$0	\$0	
4.05 DSA Review Fees					
UNCOMMITTED	\$76,626	\$0	\$0	\$0	
DIVISION OF STATE ARCHITECT	\$504,370	\$504,370	\$504,370	\$0	100.00%
	\$580,996	\$504,370	\$504,370	\$0	86.81%
4.06 Postage, Printing & Advertising					
UNCOMMITTED	\$56,830	\$0	\$0	\$0	
AMERICAN REPROGRAPHICS CO LLC	\$16,561	\$16,561	\$10,811	\$0	65.28%
SOUTHERN CALIFORNIA NEWS GROUP	\$2,605	\$2,605	\$2,605	\$0	100.00%
	\$75,997	\$19,167	\$13,416	\$0	17.65%
4.07 DSA Inspection (IOR)					
UNCOMMITTED	\$139,851	\$0	\$0	\$0	
KNOWLAND CONSTRUCTION SERVICES	\$454,016	\$454,016	\$185,856	\$39,072	40.94%
	\$593,867	\$454,016	\$185,856	\$39,072	31.30%
4.08 DSA Construction Phase Testing (LOR)					
UNCOMMITTED	\$300,741	\$0	\$0	\$0	
AMERICAN ENGINEERING LABORATORIES INC	\$347,130	\$347,130	\$269,916	\$116,766	77.76%
	\$647,871	\$347,130	\$269,916	\$116,766	41.66%
4.09 Relocation					
UNCOMMITTED	\$23,140	\$0	\$0	\$0	
ULINE INC	\$1,860	\$1,860	\$0	\$0	0.00%
	\$25,000	\$1,860	\$0	\$0	0.00%
4.10 Labor Compliance					
UNCOMMITTED	\$47,498	\$0	\$0	\$0	
	\$47,498	\$0	\$0	\$0	0.00%
4.11 Preliminary Testing (Hazmat, Topo, Geo, etc)					
UNCOMMITTED	\$229,637	\$0	\$0	\$0	
C BELOW SUBSURFACE IMAGING (Subsurface Investigation)	\$8,445	\$8,445	\$8,445	\$0	100.00%
CALIFORNIA GEOLOGICAL SURVEY (Geology and Seismology Review)	\$3,600	\$3,600	\$3,600	\$0	100.00%
ENVIRONMENTAL NETWORK CORPORATION	\$20,210	\$20,210	\$0	\$0	0.00%
HARRINGTON GEOTECHNICAL ENGINEERING INC (Geotechnical Soils Investigation)	\$13,500	\$13,500	\$13,500	\$0	100.00%
PROVENCHER, GEORGE (dba PROVO ENGINEERING)	\$720	\$720	\$720	\$0	100.00%
RMA GROUP (dba SITESCAN)	\$26,103	\$26,103	\$26,103	\$0	100.00%
XICOTENCATL ENRIQUE SALAZAR (Topographical Survey)	\$20,100	\$20,100	\$20,100	\$0	100.00%
	\$322,315	\$92,678	\$72,468	\$0	22.48%
4.12 Utility Connection Fees (Local Permits)					
UNCOMMITTED	\$173,033	\$0	\$0	\$0	
AT&T	\$5,302	\$5,302	\$5,302	\$0	100.00%
CITY OF ANAHEIM - ELECTRICAL ENGINEERING DIV	\$2,756	\$2,756	\$2,756	\$0	100.00%
CROWN CASTLE INTERNATIONAL	\$6,455	\$6,455	\$6,455	\$0	100.00%

SOUTHERN CALIFORNIA GAS CO	\$2,445	\$2,445	\$2,445	\$0	100.00%
	\$189,991	\$16,958	\$16,958	\$0	8.93%
4.13 FF&E (Laboratory Tables and Chairs, other)					
UNCOMMITTED	\$666,227	\$0	\$0	\$0	
	\$666,227	\$0	\$0	\$0	0.00%
4.14 Legal Counsel					
UNCOMMITTED	\$94,996	\$0	\$0	\$0	
	\$94,996	\$0	\$0	\$0	0.00%
5. Contingency					
5.01 Construction Contingency					
UNCOMMITTED	\$3,231,478	\$0	\$0	\$0	
	\$3,231,478	\$0	\$0	\$0	0.00%
5.02 Project Contingency					
UNCOMMITTED	\$12,861,855	\$0	\$0	\$0	
	\$12,861,855	\$0	\$0	\$0	0.00%
Total 390-9520 Canyon HS Science Center (DSA 04-117300)	\$66,341,527	\$47,585,651	\$20,848,807	\$2,826,260	31.43%
390-9520 Canyon HS Unallocated Funds F21					
4. Construction Support Costs					
4.15 Miscellaneous Fees					
UNCOMMITTED	\$0	\$0	\$0	\$0	
OUSD COST OF INTEREST DISTRIBUTION	\$36,936	\$36,936	\$36,936	\$0	100.00%
	\$36,936	\$36,936	\$36,936	\$0	100.00%
5. Program Reserve					
5.03 Interest Earned - Reserve					
UNCOMMITTED	\$1,229,345	\$0	\$0	\$0	
	\$1,229,345	\$0	\$0	\$0	0.00%
Total 390-9520 Canyon HS Unallocated Funds F21	\$1,266,281	\$36,936	\$36,936	\$0	2.92%
390-0000 Canyon HS IP Surveillance Camera and Systems					
4. Construction Support Costs					
4.13 FF&E (Laboratory Tables and Chairs, other)					
UNCOMMITTED	\$0	\$0	\$0	\$0	
CDW GOVERNMENT INC (Parts for IP Camera Systems)	\$29,337	\$29,337	\$29,337	\$0	100.00%
DIGITAL NETWORKS GROUP INC (F/I IP Camera Software)	\$7,093	\$7,093	\$7,093	\$0	100.00%
INTER-PACIFIC INC	\$18,163	\$18,163	\$18,163	\$0	100.00%
	\$54,593	\$54,593	\$54,593	\$0	100.00%
Total 390-0000 Canyon HS IP Surveillance Camera and Systems	\$54,593	\$54,593	\$54,593	\$0	100.00%
390-9520 Canyon HS Interim Kitchen (DSA 04-118418)					
1. Design Cost					
1.01 Architect					
UNCOMMITTED	\$0	\$0	\$0	\$0	
GKKWORKS CANNON DESIGN	\$119,620	\$119,620	\$11,475	\$0	9.59%
	\$119,620	\$119,620	\$11,475	\$0	9.59%

2. Construction Cost

2.01 Construction

UNCOMMITTED	\$0	\$0	\$0	\$0	
SWINERTON BUILDERS	\$1,053,557	\$1,053,557	\$1,048,571	\$0	99.53%
	\$1,053,557	\$1,053,557	\$1,048,571	\$0	99.53%

2.02 OFCI and Other Construction

UNCOMMITTED	\$10	\$0	\$0	\$0	
E.R.E.S. ENTERPRISES INC DBA ECONOMY RESTAURANT EQUIP	\$49,721	\$49,721	\$49,721	\$0	100.00%
THE DICKLER CORPORATION DBA CHEFS TOYS	\$109,449	\$109,449	\$109,449	\$0	100.00%
	\$159,180	\$159,170	\$159,170	\$0	99.99%

4. Construction Support Costs

4.01 Rental

UNCOMMITTED	\$0	\$0	\$0	\$0	
ELITE MODULAR LEASING & SALES INC	\$131,733	\$131,733	\$114,798	\$0	87.14%
	\$131,733	\$131,733	\$114,798	\$0	87.14%

4.05 DSA Review Fees

UNCOMMITTED	\$0	\$0	\$0	\$0	
DIVISION OF STATE ARCHITECT	\$15,812	\$15,812	\$15,812	\$0	100.00%
	\$15,812	\$15,812	\$15,812	\$0	100.00%

4.07 DSA Inspection (IOR)

UNCOMMITTED	\$0	\$0	\$0	\$0	
KNOWLAND CONSTRUCTION SERVICES	\$71,104	\$71,104	\$61,688	\$0	86.76%
	\$71,104	\$71,104	\$61,688	\$0	86.76%

4.08 DSA Construction Phase Testing (LOR)

UNCOMMITTED	\$0	\$0	\$0	\$0	
AMERICAN ENGINEERING LABORATORIES INC	\$17,100	\$17,100	\$9,219	\$0	53.91%
	\$17,100	\$17,100	\$9,219	\$0	53.91%

4.11 Preliminary Testing (Hazmat, Topo, Geo, etc)

UNCOMMITTED	\$0	\$0	\$0	\$0	
ENVIRONMENTAL NETWORK CORPORATION	\$4,245	\$4,245	\$3,910	\$0	92.10%
	\$4,245	\$4,245	\$3,910	\$0	92.10%

Total 390-9520 Canyon HS Interim Kitchen (DSA 04-118418)	\$1,572,352	\$1,572,342	\$1,424,644	\$0	90.61%
--	-------------	-------------	-------------	-----	--------

390-9520 Canyon HS Phase II Planning and Design

1. Design Cost

1.01 Architect

UNCOMMITTED	\$0	\$0	\$0	\$0	
GKKWORKS CANNON DESIGN	\$663,500	\$663,500	\$43,500	\$0	6.56%
	\$663,500	\$663,500	\$43,500	\$0	6.56%

1.02 AE Design Contingency

UNCOMMITTED	\$44,000	\$0	\$0	\$0	
GKKWORKS CANNON DESIGN	\$0	\$44,000	\$0	\$0	
	\$44,000	\$44,000	\$0	\$0	0.00%

3. Program and Construction Management

3.01 Program Management Fees

UNCOMMITTED	\$182,789	\$0	\$0	\$0	
CUMMING CONSTRUCTION MGMT INC	\$21,240	\$21,240	\$9,466	\$6,676	44.57%
	\$204,029	\$21,240	\$9,466	\$6,676	4.64%

3.02 Construction Management Fees

UNCOMMITTED

\$339,600	\$0	\$0	\$0	
\$339,600	\$0	\$0	\$0	0.00%

4. Construction Support Costs

4.06 Postage, Printing & Advertising

UNCOMMITTED

AMERICAN REPROGRAPHICS CO LLC

\$0	\$0	\$0	\$0	
\$7,500	\$7,500	\$0	\$0	0.00%
\$7,500	\$7,500	\$0	\$0	0.00%

4.11 Preliminary Testing (Hazmat, Topo, Geo, etc)

UNCOMMITTED

\$331,491	\$0	\$0	\$0	
\$331,491	\$0	\$0	\$0	0.00%

Total 390-9520 Canyon HS Phase II Planning and Design	\$1,590,120	\$736,240	\$52,966	\$6,676	3.33%
---	-------------	-----------	----------	---------	-------

390-TBD Canyon HS Science Center Unallocated Funds F22					
--	--	--	--	--	--

5. Unallocated Bond Funds

5.04 Unallocated Bond Funds

UNCOMMITTED

\$703,502	\$0	\$0	\$0	
\$703,502	\$0	\$0	\$0	0.00%

Total 390-TBD Canyon HS Science Center Unallocated Funds F22	\$703,502	\$0	\$0	\$0	0.00%
--	-----------	-----	-----	-----	-------

390-TBD Canyon HS Unallocated Funds F22					
---	--	--	--	--	--

5. Unallocated Bond Funds

5.04 Unallocated Bond Funds

UNCOMMITTED

\$1,737,907	\$0	\$0	\$0	
\$1,737,907	\$0	\$0	\$0	0.00%

Total 390-TBD Canyon HS Unallocated Funds F22	\$1,737,907	\$0	\$0	\$0	0.00%
---	-------------	-----	-----	-----	-------

Canyon High School	\$73,266,281	\$49,985,762	\$22,417,945	\$2,832,936	30.60%
El Modena High School					

391-0000 El Modena HS IP Surveillance Camera and Systems					
--	--	--	--	--	--

4. Construction Support Costs

4.13 FF&E (Laboratory Tables and Chairs, other)

UNCOMMITTED

CDW GOVERNMENT INC (Parts for IP Camera Systems)

DIGITAL NETWORKS GROUP INC (F/I IP Camera Software)

INTER-PACIFIC INC

\$0	\$0	\$0	\$0	
\$39,388	\$39,388	\$39,388	\$0	100.00%
\$11,719	\$11,719	\$11,719	\$0	100.00%
\$30,073	\$30,073	\$30,073	\$0	100.00%
\$81,179	\$81,179	\$81,179	\$0	100.00%

Total 391-0000 El Modena HS IP Surveillance Camera and Systems	\$81,179	\$81,179	\$81,179	\$0	100.00%
--	----------	----------	----------	-----	---------

391-9520 El Modena HS Science Center (DSA 04-117098)					
--	--	--	--	--	--

1. Design Cost

1.01 Architect

UNCOMMITTED

HARLEY ELLIS DEVEREAUX

LIONAKIS

\$140,844	\$0	\$0	\$0	
\$1,954,014	\$1,954,014	\$1,850,918	\$0	94.72%
\$14,059	\$14,059	\$14,059	\$0	100.00%

	\$2,108,917	\$1,968,073	\$1,864,977	\$0	88.43%
--	-------------	-------------	-------------	-----	--------

2. Construction Cost

2.01 Construction

UNCOMMITTED	\$0	\$0	\$0	\$0	
ANGELES CONTRACTOR, INC	\$25,936,313	\$25,936,313	\$14,295,502	\$2,641,006	55.12%
	\$25,936,313	\$25,936,313	\$14,295,502	\$2,641,006	55.12%

2.02 OFCI and Other Construction

UNCOMMITTED	\$129,446	\$0	\$0	\$0	
ACCO ENGINEERED SYSTEMS INC	\$355,544	\$355,544	\$335,681	\$0	94.41%
AMERICAN REPROGRAPHICS CO LLC	\$1,026	\$1,026	\$0	\$0	0.00%
ARROW RESTAURANT EQUIPMENT	\$14,232	\$14,232	\$0	\$0	0.00%
CAROLINA BIOLOGICAL SUPPLY	\$24,213	\$24,213	\$0	\$0	0.00%
DEVELOPMENT GROUP INC	\$16,058	\$16,058	\$16,058	\$0	100.00%
FAIR PLAY SCOREBOARDS	\$17,694	\$17,694	\$17,694	\$0	100.00%
FISHER SCIENCE EDUCATION	\$26,188	\$26,188	\$21,027	\$21,027	80.29%
FLINN SCIENTIFIC INC	\$12,364	\$12,364	\$0	\$0	0.00%
PROFESSIONAL TURF SPECIALTIES	\$23,460	\$23,460	\$23,460	\$23,460	100.00%
WW GRAINGER INC	\$2,923	\$2,923	\$1,029	\$0	35.19%
	\$623,147	\$493,701	\$414,948	\$44,487	66.59%

3. Program and Construction Management

3.01 Program Management Fees

UNCOMMITTED	\$350,237	\$0	\$0	\$0	
CUMMING CONSTRUCTION MGMT INC	\$871,689	\$967,124	\$679,888	\$46,139	78.00%
	\$1,221,926	\$967,124	\$679,888	\$46,139	55.64%

3.02 Construction Management Fees

UNCOMMITTED	\$9,646	\$0	\$0	\$0	
ARCADIS U.S. INC	\$1,944,170	\$1,944,170	\$1,552,019	\$151,770	79.83%
CORDOBA CORPORATION	\$87,836	\$87,836	\$80,616	\$9,855	91.78%
	\$2,041,652	\$2,032,006	\$1,632,635	\$161,625	79.97%

4. Construction Support Costs

4.01 Rental

UNCOMMITTED	\$0	\$0	\$0	\$0	
	\$0	\$0	\$0	\$0	

4.02 Title, Environmental, Stormwater Management

UNCOMMITTED	\$42,259	\$0	\$0	\$0	
CHICAGO TITLE COMPANY	\$1,500	\$1,500	\$1,500	\$0	100.00%
CITY OF ORANGE (PUBLIC WORKS)	\$71	\$71	\$71	\$0	100.00%
CITY OF ORANGE (WATER DIVISION)	\$16,048	\$16,048	\$16,048	\$0	100.00%
ENVIRONMENTAL AUDIT INC	\$10,950	\$10,950	\$8,548	\$0	78.06%
OUSD COST OF INTEREST DISTRIBUTION	\$1	\$1	\$1	\$0	100.00%
	\$70,829	\$28,570	\$26,167	\$0	36.94%

4.03 Commissioning

UNCOMMITTED	\$6,112	\$0	\$0	\$0	
P2S ENGINEERING INC	\$30,558	\$30,558	\$26,442	\$0	86.53%
	\$36,670	\$30,558	\$26,442	\$0	72.11%

4.04 Builders Risk Insurance

UNCOMMITTED	\$0	\$0	\$0	\$0	
	\$0	\$0	\$0	\$0	

4.05 DSA Review Fees

UNCOMMITTED	\$70,067	\$0	\$0	\$0	
DIVISION OF STATE ARCHITECT	\$306,338	\$306,338	\$306,338	\$0	100.00%
	\$376,405	\$306,338	\$306,338	\$0	81.39%

4.06 Postage, Printing & Advertising

UNCOMMITTED	\$24,496	\$0	\$0	\$0	
AMERICAN REPROGRAPHICS CO LLC	\$22,562	\$22,562	\$19,155	\$2,044	84.90%
SOUTHERN CALIFORNIA NEWS GROUP	\$2,024	\$2,024	\$2,024	\$0	100.00%
	\$49,082	\$24,585	\$21,179	\$2,044	43.15%

4.07 DSA Inspection (IOR)

UNCOMMITTED	\$48,000	\$0	\$0	\$0	
BPI INSPECTION SERVICE	\$290,404	\$290,404	\$280,514	\$35,625	96.59%
	\$338,404	\$290,404	\$280,514	\$35,625	82.89%

4.08 DSA Construction Phase Testing (LOR)

UNCOMMITTED	\$1	\$0	\$0	\$0	
KOURY ENGINEERING & TESTING INC (Geotechnical Engineering)	\$598,647	\$598,647	\$589,099	\$0	98.41%
	\$598,648	\$598,647	\$589,099	\$0	98.40%

4.09 Relocation

UNCOMMITTED	\$22,820	\$0	\$0	\$0	
ULINE INC	\$2,180	\$2,180	\$0	\$0	0.00%
	\$25,000	\$2,180	\$0	\$0	0.00%

4.10 Labor Compliance

UNCOMMITTED	\$30,730	\$0	\$0	\$0	
	\$30,730	\$0	\$0	\$0	0.00%

4.11 Preliminary Testing (Hazmat, Topo, Geo, etc)

UNCOMMITTED	\$126,207	\$0	\$0	\$0	
ALLEGIAN FIRE PROTECTION INC	\$525	\$525	\$525	\$0	100.00%
CALIFORNIA GEOLOGICAL SURVEY (Geology and Seismology Review)	\$3,600	\$3,600	\$3,600	\$0	100.00%
ENVIRONMENTAL NETWORK CORPORATION	\$3,412	\$3,412	\$0	\$0	0.00%
HARLEY ELLIS DEVEREAUX	\$14,908	\$14,908	\$14,908	\$0	100.00%
NINYO & MOORE	\$29,981	\$29,981	\$29,771	\$0	99.30%
PCA ARBORISTS & CONSULTANTS INC	\$1,569	\$1,569	\$1,569	\$0	100.00%
THE CONVERSE PROFESSIONAL GROUP (Soils Investigation)	\$30,640	\$30,640	\$30,640	\$0	100.00%
	\$210,842	\$84,635	\$81,013	\$0	38.42%

4.12 Utility Connection Fees (Local Permits)

UNCOMMITTED	\$118,770	\$0	\$0	\$0	
SOUTHERN CALIFORNIA EDISON	\$3,665	\$3,665	\$3,665	\$0	100.00%
STATE WATER RESOURCES CONTROL BOARD (SWRCB)	\$484	\$484	\$484	\$0	100.00%
	\$122,919	\$4,149	\$4,149	\$0	3.38%

4.13 FF&E (Laboratory Tables and Chairs, other)

UNCOMMITTED	\$94,999	\$0	\$0	\$0	
CDW GOVERNMENT INC (Parts for IP Camera Systems)	\$59,662	\$69,999	\$0	\$0	0.00%
INTER-PACIFIC INC	\$9,256	\$9,256	\$9,256	\$9,256	100.00%
SIERRA SCHOOL EQUIPMENT COMPANY	\$495,446	\$495,446	\$0	\$0	0.00%
TURTLE STORAGE dba AMERICAN BICYCLE CO	\$6,871	\$6,871	\$0	\$0	0.00%
VWR INTERNATIONAL LLC	\$47,922	\$52,714	\$8,873	\$8,873	18.52%
	\$714,156	\$634,286	\$18,129	\$18,129	2.54%

4.14 Legal Counsel

UNCOMMITTED	\$61,460	\$0	\$0	\$0	
	\$61,460	\$0	\$0	\$0	0.00%

4.15 Miscellaneous Fees

UNCOMMITTED

\$0	\$0	\$0	\$0
\$0	\$0	\$0	\$0

5. Contingency

5.01 Construction Contingency

UNCOMMITTED

\$1,863,487	\$0	\$0	\$0
\$1,863,487	\$0	\$0	\$0
			0.00%

5.02 Project Contingency

UNCOMMITTED

\$1,906,750	\$0	\$0	\$0
-------------	-----	-----	-----

ARCADIS U.S. INC

\$0	\$0	\$0	\$0
-----	-----	-----	-----

\$1,906,750	\$0	\$0	\$0
			0.00%

Total 391-9520 El Modena HS Science Center (DSA 04-117098)	\$38,337,337	\$33,401,570	\$20,240,981	\$2,949,055	52.80%
---	---------------------	---------------------	---------------------	--------------------	---------------

391-9520 El Modena HS Phase II Planning and Design

1. Design Cost

1.01 Architect

UNCOMMITTED

\$15,000	\$0	\$0	\$0
----------	-----	-----	-----

HARLEY ELLIS DEVEREAUX

\$1,864,560	\$1,864,560	\$630,969	\$131,287
-------------	-------------	-----------	-----------

\$1,879,560	\$1,864,560	\$630,969	\$131,287
			33.57%

3. Program and Construction Management

3.01 Program Management Fees

UNCOMMITTED

\$86,419	\$0	\$0	\$0
----------	-----	-----	-----

CUMMING CONSTRUCTION MGMT INC

\$59,661	\$59,661	\$26,590	\$18,752
----------	----------	----------	----------

\$146,080	\$59,661	\$26,590	\$18,752
			18.20%

3.02 Construction Management Fees

UNCOMMITTED

\$302,900	\$0	\$0	\$0
-----------	-----	-----	-----

\$302,900	\$0	\$0	\$0
			0.00%

4. Construction Support Costs

4.06 Postage, Printing & Advertising

UNCOMMITTED

\$0	\$0	\$0	\$0
-----	-----	-----	-----

AMERICAN REPROGRAPHICS CO LLC

\$8,000	\$8,000	\$0	\$0
---------	---------	-----	-----

\$8,000	\$8,000	\$0	\$0
			0.00%

4.11 Preliminary Testing (Hazmat, Topo, Geo, etc)

UNCOMMITTED

\$86,340	\$0	\$0	\$0
----------	-----	-----	-----

\$86,340	\$0	\$0	\$0
			0.00%

Total 391-9520 El Modena HS Phase II Planning and Design	\$2,422,880	\$1,932,221	\$657,558	\$150,039	27.14%
---	--------------------	--------------------	------------------	------------------	---------------

391-9520 El Modena HS Quad Shade Structures (DSA 04-119124)

1. Design Cost

1.01 Architect

UNCOMMITTED

\$0	\$0	\$0	\$0
-----	-----	-----	-----

HARLEY ELLIS DEVEREAUX

\$79,340	\$79,340	\$0	\$0
----------	----------	-----	-----

\$79,340	\$79,340	\$0	\$0
			0.00%

4. Construction Support Costs

4.05 DSA Review Fees

UNCOMMITTED	\$0	\$0	\$0	\$0	
DIVISION OF STATE ARCHITECT	\$9,650	\$9,650	\$9,650	\$0	100.00%
	\$9,650	\$9,650	\$9,650	\$0	100.00%
4.06 Postage, Printing & Advertising					
UNCOMMITTED	\$0	\$0	\$0	\$0	
AMERICAN REPROGRAPHICS CO LLC	\$86	\$86	\$86	\$0	100.00%
	\$86	\$86	\$86	\$0	100.00%
5. Contingency					
5.01 Construction Contingency					
UNCOMMITTED	\$600,000	\$0	\$0	\$0	
	\$600,000	\$0	\$0	\$0	0.00%
Total 391-9520 El Modena HS Quad Shade Structures (DSA 04-119124)	\$689,076	\$89,076	\$9,736	\$0	1.41%
391-TBD El Modena HS Science Center Unallocated Funds F22					
5. Unallocated Bond Funds					
5.04 Unallocated Bond Funds					
UNCOMMITTED	\$1,138,078	\$0	\$0	\$0	
	\$1,138,078	\$0	\$0	\$0	0.00%
Total 391-TBD El Modena HS Science Center Unallocated Funds F22	\$1,138,078	\$0	\$0	\$0	0.00%
391-9520 El Modena HS Unallocated Funds F21					
4. Construction Support Costs					
4.15 Miscellaneous Fees					
UNCOMMITTED	\$0	\$0	\$0	\$0	
OUSD COST OF INTEREST DISTRIBUTION	\$22,550	\$22,550	\$22,550	\$0	100.00%
	\$22,550	\$22,550	\$22,550	\$0	100.00%
5. Program Reserve					
5.03 Interest Earned - Reserve					
UNCOMMITTED	\$64,535	\$0	\$0	\$0	
	\$64,535	\$0	\$0	\$0	0.00%
Total 391-9520 El Modena HS Unallocated Funds F21	\$87,085	\$22,550	\$22,550	\$0	25.89%
391-TBD El Modena HS Unallocated Funds F22					
5. Unallocated Bond Funds					
5.04 Unallocated Bond Funds					
UNCOMMITTED	\$30,017,362	\$0	\$0	\$0	
	\$30,017,362	\$0	\$0	\$0	0.00%
Total 391-TBD El Modena HS Unallocated Funds F22	\$30,017,362	\$0	\$0	\$0	0.00%
El Modena High School	\$72,772,997	\$35,526,596	\$21,012,005	\$3,099,094	28.87%
Orange High School					
392-0000 Orange HS IP Surveillance Camera and Systems					
4. Construction Support Costs					
4.13 FF&E (Laboratory Tables and Chairs, other)					

UNCOMMITTED	\$0	\$0	\$0	\$0	
CDW GOVERNMENT INC (Parts for IP Camera Systems)	\$53,662	\$53,662	\$53,662	\$0	100.00%
DIGITAL NETWORKS GROUP INC (F/I IP Camera Software)	\$13,569	\$13,569	\$13,569	\$0	100.00%
INTER-PACIFIC INC	\$34,837	\$34,837	\$34,837	\$0	100.00%
	\$102,068	\$102,068	\$102,068	\$0	100.00%
Total 392-0000 Orange HS IP Surveillance Camera and Systems	\$102,068	\$102,068	\$102,068	\$0	100.00%

392-9520 Orange HS Science Bldg (DSA 04-116859)

1. Design Cost

1.01 Architect

UNCOMMITTED	\$151,933	\$0	\$0	\$0	
LIONAKIS	\$1,854,196	\$1,854,196	\$1,814,399	\$48,457	97.85%
	\$2,006,129	\$1,854,196	\$1,814,399	\$48,457	90.44%

2. Construction Cost

2.01 Construction

UNCOMMITTED	\$0	\$0	\$0	\$0	
GIANNELLI ELECTRIC INC	\$14,878	\$14,878	\$14,878	\$0	100.00%
INTEGRATED DEMOLITION AND REMEDIATION (Abatement and Demolition)	\$44,800	\$44,800	\$44,800	\$0	100.00%
J & A FENCE (Custodial Storage Fencing)	\$0	\$0	\$0	\$0	
KYA SERVICES LLC (Install Carpet)	\$0	\$0	\$0	\$0	
OLESH, KEITH (Termite Services)	\$0	\$0	\$0	\$0	
PINNER CONSTRUCTION	\$26,582,729	\$26,582,729	\$26,395,464	\$4,197,477	99.30%
SOUTHERN CALIFORNIA NEWS GROUP	\$0	\$0	\$0	\$0	
TIME & ALARM SYSTEMS	\$3,100	\$3,100	\$3,100	\$0	100.00%
UNIVERSAL ASPHALT CO (Remove and Patch Asphalt)	\$6,830	\$6,830	\$6,830	\$0	100.00%
	\$26,652,337	\$26,652,337	\$26,465,072	\$4,197,477	99.30%

2.02 OFCI and Other Construction

UNCOMMITTED	\$111,041	\$0	\$0	\$0	
ACCO ENGINEERED SYSTEMS INC	\$62,883	\$62,883	\$62,883	\$0	100.00%
AMERICAN REPROGRAPHICS CO LLC	\$1,026	\$1,026	\$0	\$0	0.00%
ARROW RESTAURANT EQUIPMENT	\$4,888	\$4,888	\$4,888	\$4,888	100.00%
CAROLINA BIOLOGICAL SUPPLY	\$16,559	\$16,559	\$16,480	\$1,655	99.52%
CITY OF ORANGE (PUBLIC WORKS)	\$2,000	\$2,000	\$2,000	\$0	100.00%
DEVELOPMENT GROUP INC	\$12,914	\$12,914	\$12,914	\$0	100.00%
FISHER SCIENCE EDUCATION	\$18,400	\$18,400	\$18,400	\$16,843	100.00%
FLINN SCIENTIFIC INC	\$10,263	\$10,263	\$10,263	\$10,263	100.00%
GIANNELLI ELECTRIC INC	\$24,320	\$24,320	\$24,320	\$0	100.00%
GRUETT TREE CO INC (Removal of Trees)	\$7,625	\$7,625	\$7,625	\$0	100.00%
J & A FENCE (Custodial Storage Fencing)	\$6,885	\$6,885	\$6,885	\$0	100.00%
KYA SERVICES LLC (Install Carpet)	\$0	\$0	\$0	\$0	
OLESH, KEITH (Termite Services)	\$1,500	\$1,500	\$1,500	\$0	100.00%
SOUTHERN CALIFORNIA NEWS GROUP	\$0	\$0	\$0	\$0	
TRIMARK RAYGAL LLC	\$0	\$0	\$0	\$0	
VORTEX INDUSTRIES, INC.	\$6,804	\$6,804	\$6,804	\$0	100.00%
WW GRAINGER INC	\$2,292	\$2,292	\$1,373	\$0	59.89%
	\$289,399	\$178,358	\$176,334	\$33,649	60.93%

3. Program and Construction Management

3.01 Program Management Fees

UNCOMMITTED	\$423,420	\$0	\$0	\$0	
CUMMING CONSTRUCTION MGMT INC	\$1,118,330	\$1,170,512	\$760,288	\$90,227	67.98%
	\$1,541,750	\$1,170,512	\$760,288	\$90,227	49.31%

3.02 Construction Management Fees

UNCOMMITTED	\$188,694	\$0	\$0	\$0	
BALFOUR BEATTY CONSTRUCTION	\$1,627,253	\$1,627,254	\$1,622,631	\$268,158	99.72%
CORDOBA CORPORATION	\$87,836	\$87,836	\$76,714	\$9,855	87.34%
	\$1,903,783	\$1,715,089	\$1,699,345	\$278,013	89.26%

4. Construction Support Costs

4.01 Rental

UNCOMMITTED	\$0	\$0	\$0	\$0	
	\$0	\$0	\$0	\$0	

4.02 Title, Environmental, Stormwater Management

UNCOMMITTED	\$47,386	\$0	\$0	\$0	
CHICAGO TITLE COMPANY	\$1,500	\$1,500	\$1,500	\$0	100.00%
OUSD COST OF INTEREST DISTRIBUTION	\$1	\$1	\$1	\$0	100.00%
PLACEWORKS INC	\$52,231	\$52,231	\$52,231	\$0	100.00%
STATE WATER RESOURCES CONTROL BOARD (SWRCB)	\$726	\$726	\$726	\$0	100.00%
	\$101,844	\$54,458	\$54,458	\$0	53.47%

4.03 Commissioning

UNCOMMITTED	\$6,117	\$0	\$0	\$0	
P2S ENGINEERING INC	\$30,585	\$30,585	\$27,014	\$0	88.32%
	\$36,702	\$30,585	\$27,014	\$0	73.60%

4.04 Builders Risk Insurance

UNCOMMITTED	\$0	\$0	\$0	\$0	
	\$0	\$0	\$0	\$0	

4.05 DSA Review Fees

UNCOMMITTED	\$119,114	\$0	\$0	\$0	
DIVISION OF STATE ARCHITECT	\$252,750	\$252,750	\$252,750	\$0	100.00%
OUSD REVOLVING CASH	\$500	\$500	\$500	\$0	100.00%
	\$372,364	\$253,250	\$253,250	\$0	68.01%

4.06 Postage, Printing & Advertising

UNCOMMITTED	\$33,302	\$0	\$0	\$0	
AMERICAN REPROGRAPHICS CO LLC	\$14,807	\$14,807	\$8,734	\$0	58.99%
SOUTHERN CALIFORNIA NEWS GROUP	\$8,518	\$8,518	\$8,518	\$0	100.00%
	\$56,626	\$23,325	\$17,252	\$0	30.47%

4.07 DSA Inspection (IOR)

UNCOMMITTED	\$145,585	\$0	\$0	\$0	
KNOWLAND CONSTRUCTION SERVICES	\$321,507	\$321,507	\$283,272	\$25,056	88.11%
	\$467,092	\$321,507	\$283,272	\$25,056	60.65%

4.08 DSA Construction Phase Testing (LOR)

UNCOMMITTED	\$125,025	\$0	\$0	\$0	
NINYO & MOORE	\$327,624	\$327,624	\$221,200	\$0	67.52%
	\$452,649	\$327,624	\$221,200	\$0	48.87%

4.09 Relocation

UNCOMMITTED	\$21,900	\$0	\$0	\$0	
ULINE INC	\$3,100	\$3,100	\$2,581	\$321	83.26%
	\$25,000	\$3,100	\$2,581	\$321	10.32%

4.10 Labor Compliance

UNCOMMITTED	\$40,951	\$0	\$0	\$0	
	\$40,951	\$0	\$0	\$0	0.00%
4.11 Preliminary Testing (Hazmat, Topo, Geo, etc)					
UNCOMMITTED	\$203,362	\$0	\$0	\$0	
CALIFORNIA GEOLOGICAL SURVEY (Geology and Seismology Review)	\$3,600	\$3,600	\$3,600	\$0	100.00%
KOURY ENGINEERING & TESTING INC (Geotechnical Engineering)	\$13,300	\$13,300	\$13,300	\$0	100.00%
PENCO ENGINEERING INC (Topographical Survey Services)	\$42,350	\$42,350	\$41,070	\$0	96.98%
RMA GROUP (dba SITESCAN)	\$49,533	\$49,533	\$49,533	\$0	100.00%
	\$312,145	\$108,783	\$107,503	\$0	34.44%
4.12 Utility Connection Fees (Local Permits)					
UNCOMMITTED	\$152,267	\$0	\$0	\$0	
CITY OF ORANGE (PUBLIC WORKS)	\$2,500	\$2,500	\$2,500	\$0	100.00%
SOUTHERN CALIFORNIA EDISON	\$6,912	\$6,912	\$6,912	\$0	100.00%
SOUTHERN CALIFORNIA GAS CO	\$2,124	\$2,124	\$2,124	\$2,124	100.00%
	\$163,803	\$11,536	\$11,536	\$2,124	7.04%
4.13 FF&E (Laboratory Tables and Chairs, other)					
UNCOMMITTED	\$64,139	\$0	\$0	\$0	
CDW GOVERNMENT INC (Parts for IP Camera Systems)	\$63,627	\$65,624	\$59,658	\$0	93.76%
CONEXWEST	\$9,466	\$9,466	\$9,419	\$0	99.51%
INTER-PACIFIC INC	\$7,904	\$7,904	\$7,904	\$7,904	100.00%
SIERRA SCHOOL EQUIPMENT COMPANY	\$464,248	\$464,248	\$464,248	\$464,248	100.00%
TURTLE STORAGE dba AMERICAN BICYCLE CO	\$6,871	\$6,871	\$6,537	\$0	95.14%
VORTEX INDUSTRIES, INC.	\$0	\$0	\$0	\$0	
VWR INTERNATIONAL LLC	\$34,314	\$37,746	\$34,314	\$26,032	100.00%
	\$650,570	\$591,860	\$582,081	\$498,185	89.47%
4.14 Legal Counsel					
UNCOMMITTED	\$81,902	\$0	\$0	\$0	
	\$81,902	\$0	\$0	\$0	0.00%
4.15 Miscellaneous Fees					
UNCOMMITTED	\$0	\$0	\$0	\$0	
	\$0	\$0	\$0	\$0	
5. Contingency					
5.01 Construction Contingency					
UNCOMMITTED	\$2,023,672	\$0	\$0	\$0	
	\$2,023,672	\$0	\$0	\$0	0.00%
5.02 Project Contingency					
UNCOMMITTED	\$4,695,265	\$0	\$0	\$0	
	\$4,695,265	\$0	\$0	\$0	0.00%
Total 392-9520 Orange HS Science Bldg (DSA 04-116859)	\$41,873,983	\$33,296,518	\$32,475,584	\$5,173,510	77.56%
392-9520 Orange HS Shade Structure (DSA 04-118351)					
1. Design Cost					
1.01 Architect					
UNCOMMITTED	\$0	\$0	\$0	\$0	
LIONAKIS	\$17,317	\$17,317	\$17,317	\$0	100.00%
	\$17,317	\$17,317	\$17,317	\$0	100.00%
2. Construction Cost					

2.01 Construction

UNCOMMITTED	\$0	\$0	\$0	\$0	
PINNER CONSTRUCTION	\$113,500	\$113,500	\$113,500	\$0	100.00%
	\$113,500	\$113,500	\$113,500	\$0	100.00%

3. Program and Construction Management**3.01 Program Management Fees**

UNCOMMITTED	\$0	\$0	\$0	\$0	
CUMMING CONSTRUCTION MGMT INC	\$1,838	\$1,838	\$1,838	\$0	100.00%
	\$1,838	\$1,838	\$1,838	\$0	100.00%

3.02 Construction Management Fees

UNCOMMITTED	\$0	\$0	\$0	\$0	
BALFOUR BEATTY CONSTRUCTION	\$5,956	\$5,956	\$5,956	\$0	100.00%
	\$5,956	\$5,956	\$5,956	\$0	100.00%

4. Construction Support Costs**4.05 DSA Review Fees**

UNCOMMITTED	\$0	\$0	\$0	\$0	
DIVISION OF STATE ARCHITECT	\$1,873	\$1,873	\$1,873	\$0	100.00%
	\$1,873	\$1,873	\$1,873	\$0	100.00%

4.07 DSA Inspection (IOR)

UNCOMMITTED	\$0	\$0	\$0	\$0	
KNOWLAND CONSTRUCTION SERVICES	\$1,740	\$1,740	\$1,740	\$0	100.00%
	\$1,740	\$1,740	\$1,740	\$0	100.00%

4.08 DSA Construction Phase Testing (LOR)

UNCOMMITTED	\$0	\$0	\$0	\$0	
NINYO & MOORE	\$7,408	\$7,408	\$7,408	\$0	100.00%
	\$7,408	\$7,408	\$7,408	\$0	100.00%

Total 392-9520 Orange HS Shade Structure (DSA 04-118351)	\$149,631	\$149,631	\$149,631	\$0	100.00%
---	------------------	------------------	------------------	------------	----------------

392-9520 Orange HS Site Improvements (DSA 04-116673)					
---	--	--	--	--	--

1. Design Cost**1.01 Architect**

UNCOMMITTED	\$0	\$0	\$0	\$0	
LIONAKIS	\$450,189	\$450,189	\$446,286	\$0	99.13%
SILVER CREEK INDUSTRIES INC (Engineering for Warming Kitchen Relocatable Building)	\$29,682	\$29,682	\$29,682	\$0	100.00%
	\$479,871	\$479,871	\$475,968	\$0	99.19%

2. Construction Cost**2.01 Construction**

UNCOMMITTED	\$0	\$0	\$0	\$0	
KYA SERVICES LLC (Install Carpet)	\$20,824	\$20,824	\$9,564	\$0	45.93%
SWINERTON BUILDERS	\$6,556,428	\$6,556,428	\$6,556,428	\$0	100.00%
TRIMARK RAYGAL LLC	\$89,860	\$89,860	\$89,860	\$0	100.00%
	\$6,667,112	\$6,667,112	\$6,655,852	\$0	99.83%

2.02 OFCI and Other Construction

UNCOMMITTED	\$0	\$0	\$0	\$0	
ACCO ENGINEERED SYSTEMS INC	\$209,074	\$209,074	\$209,074	\$0	100.00%
	\$209,074	\$209,074	\$209,074	\$0	100.00%

3. Program and Construction Management

3.01 Program Management Fees

UNCOMMITTED	\$0	\$0	\$0	\$0	
BALFOUR BEATTY CONSTRUCTION	\$0	\$0	\$0	\$0	
CUMMING CONSTRUCTION MGMT INC	\$115,479	\$115,479	\$115,479	\$0	100.00%
	\$115,479	\$115,479	\$115,479	\$0	100.00%

3.02 Construction Management Fees

UNCOMMITTED	\$0	\$0	\$0	\$0	
BALFOUR BEATTY CONSTRUCTION	\$296,554	\$296,554	\$296,554	\$0	100.00%
	\$296,554	\$296,554	\$296,554	\$0	100.00%

4. Construction Support Costs

4.02 Title, Environmental, Stormwater Management

UNCOMMITTED	\$0	\$0	\$0	\$0	
ORANGE COUNTY HEALTH CARE AGENCY	\$1,470	\$1,470	\$1,470	\$0	100.00%
	\$1,470	\$1,470	\$1,470	\$0	100.00%

4.03 Commissioning

UNCOMMITTED	\$0	\$0	\$0	\$0	
P2S ENGINEERING INC	\$4,755	\$4,755	\$4,667	\$0	98.15%
	\$4,755	\$4,755	\$4,667	\$0	98.15%

4.05 DSA Review Fees

UNCOMMITTED	\$3,853	\$0	\$0	\$0	
DIVISION OF STATE ARCHITECT	\$94,585	\$94,585	\$94,585	\$0	100.00%
	\$98,438	\$94,585	\$94,585	\$0	96.09%

4.06 Postage, Printing & Advertising

UNCOMMITTED	\$1	\$0	\$0	\$0	
AMERICAN REPROGRAPHICS CO LLC	\$7,630	\$7,630	\$7,630	\$0	100.00%
SOUTHERN CALIFORNIA NEWS GROUP	\$1,264	\$1,264	\$1,264	\$0	100.00%
	\$8,895	\$8,894	\$8,894	\$0	99.99%

4.07 DSA Inspection (IOR)

UNCOMMITTED	\$0	\$0	\$0	\$0	
KNOWLAND CONSTRUCTION SERVICES	\$104,480	\$104,480	\$96,985	\$0	92.83%
	\$104,480	\$104,480	\$96,985	\$0	92.83%

4.08 DSA Construction Phase Testing (LOR)

UNCOMMITTED	\$0	\$0	\$0	\$0	
NINYO & MOORE	\$113,255	\$113,255	\$112,544	\$0	99.37%
	\$113,255	\$113,255	\$112,544	\$0	99.37%

4.11 Preliminary Testing (Hazmat, Topo, Geo, etc)

UNCOMMITTED	\$0	\$0	\$0	\$0	
ENVIRONMENTAL NETWORK CORPORATION	\$9,100	\$9,100	\$9,012	\$0	99.03%
	\$9,100	\$9,100	\$9,012	\$0	99.03%

Total 392-9520 Orange HS Site Improvements (DSA 04-116673)	\$8,108,482	\$8,104,629	\$8,081,083	\$0	99.66%
--	-------------	-------------	-------------	-----	--------

392-9520 Orange HS Phase II Planning and Design

1. Design Cost

1.01 Architect

UNCOMMITTED	\$121,050	\$0	\$0	\$0	
LIONAKIS	\$1,409,450	\$1,409,450	\$451,120	\$236,459	32.01%
	\$1,530,500	\$1,409,450	\$451,120	\$236,459	29.48%

3. Program and Construction Management

3.01 Program Management Fees

UNCOMMITTED	\$1	\$0	\$0	\$0	
CUMMING CONSTRUCTION MGMT INC	\$49,836	\$49,836	\$22,211	\$15,664	44.57%
	\$49,837	\$49,836	\$22,211	\$15,664	44.57%

3.02 Construction Management Fees

UNCOMMITTED	\$372,050	\$0	\$0	\$0	
	\$372,050	\$0	\$0	\$0	0.00%

4. Construction Support Costs

4.06 Postage, Printing & Advertising

UNCOMMITTED	\$0	\$0	\$0	\$0	
AMERICAN REPROGRAPHICS CO LLC	\$14,000	\$14,000	\$0	\$0	0.00%
	\$14,000	\$14,000	\$0	\$0	0.00%

4.11 Preliminary Testing (Hazmat, Topo, Geo, etc)

UNCOMMITTED	\$249,825	\$0	\$0	\$0	
CANNON CORPORATION	\$50,000	\$50,000	\$35,076	\$35,076	70.15%
	\$299,825	\$50,000	\$35,076	\$35,076	11.70%

Total 392-9520 Orange HS Phase II Planning and Design	\$2,266,212	\$1,523,286	\$508,406	\$287,199	22.43%
---	-------------	-------------	-----------	-----------	--------

392-TBD Orange HS Science Center Unallocated Funds F22					
--	--	--	--	--	--

5. Unallocated Bond Funds

5.04 Unallocated Bond Funds

UNCOMMITTED	\$1,520,780	\$0	\$0	\$0	
	\$1,520,780	\$0	\$0	\$0	0.00%

Total 392-TBD Orange HS Science Center Unallocated Funds F22	\$1,520,780	\$0	\$0	\$0	0.00%
--	-------------	-----	-----	-----	-------

392-9520 Orange HS Unallocated Funds F21					
--	--	--	--	--	--

5. Program Reserve

5.03 Interest Earned - Reserve

UNCOMMITTED	\$840,506	\$0	\$0	\$0	
	\$840,506	\$0	\$0	\$0	0.00%

4. Construction Support Costs

4.15 Miscellaneous Fees

UNCOMMITTED	\$0	\$0	\$0	\$0	
OUSD COST OF INTEREST DISTRIBUTION	\$25,457	\$25,457	\$25,457	\$0	100.00%
	\$25,457	\$25,457	\$25,457	\$0	100.00%

Total 392-9520 Orange HS Unallocated Funds F21	\$865,963	\$25,457	\$25,457	\$0	2.94%
--	-----------	----------	----------	-----	-------

392-TBD Orange HS Unallocated Funds F22					
---	--	--	--	--	--

5. Unallocated Bond Funds

5.04 Unallocated Bond Funds

UNCOMMITTED	\$17,978,844	\$0	\$0	\$0	
	\$17,978,844	\$0	\$0	\$0	0.00%

Total 392-TBD Orange HS Unallocated Funds F22	\$17,978,844	\$0	\$0	\$0	0.00%
---	--------------	-----	-----	-----	-------

Orange High School	\$72,865,963	\$43,201,589	\$41,342,230	\$5,460,709	56.74%
Villa Park High School					

394-0000 Villa Park HS IP Surveillance Camera and Systems

4. Construction Support Costs

4.13 FF&E (Laboratory Tables and Chairs, other)

UNCOMMITTED	\$0	\$0	\$0	\$0	
CDW GOVERNMENT INC (Parts for IP Camera Systems)	\$32,182	\$32,182	\$32,182	\$0	100.00%
DIGITAL NETWORKS GROUP INC (F/I IP Camera Software)	\$8,635	\$8,635	\$8,635	\$0	100.00%
INTER-PACIFIC INC	\$22,133	\$22,133	\$22,133	\$0	100.00%
	\$62,949	\$62,949	\$62,949	\$0	100.00%

Total 394-0000 Villa Park HS IP Surveillance Camera and Systems	\$62,949	\$62,949	\$62,949	\$0	100.00%
---	----------	----------	----------	-----	---------

394-9520 Villa Park HS Science Center (DSA 04-117022)

1. Design Cost

1.01 Architect

UNCOMMITTED	\$235,288	\$0	\$0	\$0	
DKS ASSOCIATES	\$78,310	\$78,310	\$74,310	\$0	94.89%
LIONAKIS	\$14,059	\$14,059	\$14,059	\$0	100.00%
LPA INC	\$2,161,858	\$2,161,858	\$1,977,474	\$5,124	91.47%
	\$2,489,515	\$2,254,227	\$2,065,843	\$5,124	82.98%

2. Construction Cost

2.01 Construction

UNCOMMITTED	\$140,145	\$0	\$0	\$0	
ANGELES CONTRACTOR, INC	\$20,231,083	\$20,231,083	\$7,106,880	\$465,376	35.13%
	\$20,371,228	\$20,231,083	\$7,106,880	\$465,376	34.89%

2.02 OFCI and Other Construction

UNCOMMITTED	\$148,593	\$0	\$0	\$0	
ACCO ENGINEERED SYSTEMS INC	\$150,829	\$150,829	\$127,947	\$0	84.83%
AMERICAN REPROGRAPHICS CO LLC	\$1,026	\$1,026	\$0	\$0	0.00%
ARROW RESTAURANT EQUIPMENT	\$14,076	\$14,076	\$0	\$0	0.00%
CAROLINA BIOLOGICAL SUPPLY	\$24,213	\$24,213	\$0	\$0	0.00%
DEVELOPMENT GROUP INC	\$16,057	\$16,057	\$16,057	\$0	100.00%
FISHER SCIENCE EDUCATION	\$26,187	\$26,187	\$21,027	\$21,027	80.29%
FLINN SCIENTIFIC INC	\$12,364	\$12,364	\$0	\$0	0.00%
WW GRAINGER INC	\$2,923	\$2,923	\$110	\$0	3.75%
	\$396,269	\$247,676	\$165,141	\$21,027	41.67%

3. Program and Construction Management

3.01 Program Management Fees

UNCOMMITTED	\$430,912	\$0	\$0	\$0	
CUMMING CONSTRUCTION MGMT INC	\$811,752	\$910,164	\$706,857	\$23,984	87.08%
	\$1,242,664	\$910,164	\$706,857	\$23,984	56.88%

3.02 Construction Management Fees

UNCOMMITTED	\$242,335	\$0	\$0	\$0	
CORDOBA CORPORATION	\$1,721,888	\$1,833,280	\$1,613,376	\$198,333	93.70%
	\$1,964,222	\$1,833,280	\$1,613,376	\$198,333	82.14%

4. Construction Support Costs

4.01 Rental

UNCOMMITTED	\$44,408	\$0	\$0	\$0	
	\$44,408	\$0	\$0	\$0	0.00%

4.02 Title, Environmental, Stormwater Management

UNCOMMITTED	\$36,668	\$0	\$0	\$0	
CHICAGO TITLE COMPANY	\$750	\$750	\$750	\$0	100.00%
OUSD COST OF INTEREST DISTRIBUTION	\$1	\$1	\$1	\$0	100.00%
PLACEWORKS INC	\$87,059	\$87,059	\$73,237	\$0	84.12%
STATE WATER RESOURCES CONTROL BOARD (SWRCB)	\$484	\$484	\$484	\$0	100.00%
	\$124,962	\$88,294	\$74,471	\$0	59.60%

4.03 Commissioning

UNCOMMITTED	\$9,722	\$0	\$0	\$0	
P2S ENGINEERING INC	\$31,635	\$31,635	\$25,218	\$0	79.72%
	\$41,357	\$31,635	\$25,218	\$0	60.98%

4.05 DSA Review Fees

UNCOMMITTED	\$38,256	\$0	\$0	\$0	
DIVISION OF STATE ARCHITECT	\$289,250	\$289,250	\$289,250	\$0	100.00%
	\$327,506	\$289,250	\$289,250	\$0	88.32%

4.06 Postage, Printing & Advertising

UNCOMMITTED	\$25,273	\$0	\$0	\$0	
AMERICAN REPROGRAPHICS CO LLC	\$19,506	\$19,506	\$12,630	\$1,814	64.75%
SOUTHERN CALIFORNIA NEWS GROUP	\$1,768	\$1,768	\$1,768	\$0	100.00%
	\$46,548	\$21,274	\$14,398	\$1,814	30.93%

4.07 DSA Inspection (IOR)

UNCOMMITTED	\$94,895	\$0	\$0	\$0	
BPI INSPECTION SERVICE	\$273,615	\$273,615	\$262,634	\$44,985	95.99%
	\$368,510	\$273,615	\$262,634	\$44,985	71.27%

4.08 DSA Construction Phase Testing (LOR)

UNCOMMITTED	\$0	\$0	\$0	\$0	
NINYO & MOORE	\$534,755	\$534,755	\$534,755	\$0	100.00%
	\$534,755	\$534,755	\$534,755	\$0	100.00%

4.09 Relocation

UNCOMMITTED	\$22,780	\$0	\$0	\$0	
ULINE INC	\$1,860	\$1,860	\$0	\$0	0.00%
	\$24,640	\$1,860	\$0	\$0	0.00%

4.10 Labor Compliance

UNCOMMITTED	\$27,622	\$0	\$0	\$0	
	\$27,622	\$0	\$0	\$0	0.00%

4.11 Preliminary Testing (Hazmat, Topo, Geo, etc)

UNCOMMITTED	\$45,618	\$0	\$0	\$0	
CALIFORNIA GEOLOGICAL SURVEY (Geology and Seismology Review)	\$3,600	\$3,600	\$3,600	\$0	100.00%
ENVIRONMENTAL NETWORK CORPORATION	\$3,140	\$3,140	\$3,070	\$0	97.77%
LEIGHTON CONSULTING INC (Geotechnical Engineering)	\$20,000	\$20,000	\$16,549	\$0	82.75%
PSOMAS	\$27,000	\$27,000	\$21,034	\$0	77.90%
RMA GROUP (dba SITESCAN)	\$53,125	\$53,125	\$44,890	\$0	84.50%
SPECTRUM FIRE PROTECTION (Fire Hydrant Flow Test)	\$1,000	\$1,000	\$1,000	\$0	100.00%
	\$153,483	\$107,865	\$90,143	\$0	58.73%

4.12 Utility Connection Fees (Local Permits)

UNCOMMITTED	\$152,036	\$0	\$0	\$0	
-------------	-----------	-----	-----	-----	--

SOUTHERN CALIFORNIA EDISON	\$400	\$400	\$400	\$400	100.00%
STATE WATER RESOURCES CONTROL BOARD (SWRCB)	\$484	\$484	\$484	\$0	100.00%
	\$152,920	\$884	\$884	\$400	0.58%
4.13 FF&E (Laboratory Tables and Chairs, other)					
UNCOMMITTED	\$97,493	\$0	\$0	\$0	
CDW GOVERNMENT INC (Parts for IP Camera Systems)	\$59,662	\$65,624	\$0	\$0	0.00%
CULVER-NEWLIN INC	\$12,359	\$12,359	\$12,359	\$0	100.00%
INTER-PACIFIC INC	\$7,325	\$7,325	\$7,325	\$7,325	100.00%
SIERRA SCHOOL EQUIPMENT COMPANY	\$485,250	\$485,250	\$0	\$0	0.00%
VWR INTERNATIONAL LLC	\$47,922	\$52,714	\$8,873	\$0	18.52%
	\$710,011	\$623,272	\$28,557	\$7,325	4.02%
4.14 Legal Counsel					
UNCOMMITTED	\$55,244	\$0	\$0	\$0	
	\$55,244	\$0	\$0	\$0	0.00%
5. Contingency					
5.01 Construction Contingency					
UNCOMMITTED	\$2,335,665	\$0	\$0	\$0	
	\$2,335,665	\$0	\$0	\$0	0.00%
5.02 Project Contingency					
UNCOMMITTED	\$7,055,727	\$0	\$0	\$0	
	\$7,055,727	\$0	\$0	\$0	0.00%
Total 394-9520 Villa Park HS Science Center (DSA 04-117022)					
	\$38,467,255	\$27,449,134	\$12,978,406	\$768,367	33.74%
394-9520 Villa Park HS Interim Housing (DSA 04-116788)					
1. Design Cost					
1.01 Architect					
UNCOMMITTED	\$0	\$0	\$0	\$0	
LPA INC	\$70,000	\$70,000	\$70,000	\$0	100.00%
	\$70,000	\$70,000	\$70,000	\$0	100.00%
2. Construction Cost					
2.01 Construction					
UNCOMMITTED	\$0	\$0	\$0	\$0	
ANGELES CONTRACTOR, INC	\$1,074,556	\$1,074,556	\$1,074,556	\$0	100.00%
	\$1,074,556	\$1,074,556	\$1,074,556	\$0	100.00%
2.02 OFCI and Other Construction					
UNCOMMITTED	\$0	\$0	\$0	\$0	
ACCO ENGINEERED SYSTEMS INC	\$36,527	\$36,527	\$36,527	\$0	100.00%
	\$36,527	\$36,527	\$36,527	\$0	100.00%
4. Construction Support Costs					
4.01 Rental					
UNCOMMITTED	\$0	\$0	\$0	\$0	
ELITE MODULAR LEASING & SALES INC	\$444,082	\$444,082	\$376,482	\$0	84.78%
	\$444,082	\$444,082	\$376,482	\$0	84.78%
4.05 DSA Review Fees					
UNCOMMITTED	\$0	\$0	\$0	\$0	
DIVISION OF STATE ARCHITECT	\$24,163	\$24,163	\$24,163	\$0	100.00%
	\$24,163	\$24,163	\$24,163	\$0	100.00%

4.07 DSA Inspection (IOR)

UNCOMMITTED	\$0	\$0	\$0	\$0	
BPI INSPECTION SERVICE	\$43,265	\$43,265	\$43,265	\$0	100.00%
	\$43,265	\$43,265	\$43,265	\$0	100.00%

4.08 DSA Construction Phase Testing (LOR)

UNCOMMITTED	\$0	\$0	\$0	\$0	
NINYO & MOORE	\$41,908	\$41,908	\$41,908	\$0	100.00%
	\$41,908	\$41,908	\$41,908	\$0	100.00%

4.09 Relocation

UNCOMMITTED	\$0	\$0	\$0	\$0	
Beltmann Group, Inc.	\$4,640	\$4,640	\$4,640	\$0	100.00%
	\$4,640	\$4,640	\$4,640	\$0	100.00%

Total 394-9520 Villa Park HS Interim Housing (DSA 04-116788)	\$1,739,140	\$1,739,140	\$1,671,540	\$0	96.11%
---	--------------------	--------------------	--------------------	------------	---------------

394-9520 Villa Park HS Parking and Drop Off (DSA 04-118521)**1. Design Cost****1.01 Architect**

UNCOMMITTED	\$0	\$0	\$0	\$0	
LPA INC	\$107,305	\$107,305	\$59,506	\$0	55.45%
	\$107,305	\$107,305	\$59,506	\$0	55.45%

2. Construction Cost**2.01 Construction**

UNCOMMITTED	\$0	\$0	\$0	\$0	
ANGELES CONTRACTOR, INC	\$2,750,000	\$2,750,000	\$2,440,800	\$513,000	88.76%
	\$2,750,000	\$2,750,000	\$2,440,800	\$513,000	88.76%

4. Construction Support Costs**4.05 DSA Review Fees**

UNCOMMITTED	\$5,233	\$0	\$0	\$0	
DIVISION OF STATE ARCHITECT	\$37,450	\$37,450	\$37,450	\$0	100.00%
	\$42,683	\$37,450	\$37,450	\$0	87.74%

4.06 Postage, Printing & Advertising

UNCOMMITTED	\$0	\$0	\$0	\$0	
AMERICAN REPROGRAPHICS CO LLC	\$476	\$476	\$476	\$0	100.00%
	\$476	\$476	\$476	\$0	100.00%

4.07 DSA Inspection (IOR)

UNCOMMITTED	\$0	\$0	\$0	\$0	
BPI INSPECTION SERVICE	\$44,880	\$44,880	\$36,520	\$17,290	81.37%
	\$44,880	\$44,880	\$36,520	\$17,290	81.37%

4.08 DSA Construction Phase Testing (LOR)

UNCOMMITTED	\$0	\$0	\$0	\$0	
NINYO & MOORE	\$45,905	\$45,905	\$44,248	\$0	96.39%
	\$45,905	\$45,905	\$44,248	\$0	96.39%

Total 394-9520 Villa Park HS Parking and Drop Off (DSA 04-118521)	\$2,991,250	\$2,986,016	\$2,619,000	\$530,290	87.56%
--	--------------------	--------------------	--------------------	------------------	---------------

394-9520 Villa Park HS Phase II Planning and Design**1. Design Cost****1.01 Architect**

UNCOMMITTED	\$0	\$0	\$0	\$0	
LPA INC	\$1,877,000	\$1,877,000	\$526,224	\$118,882	28.04%
	\$1,877,000	\$1,877,000	\$526,224	\$118,882	28.04%

3. Program and Construction Management

3.01 Program Management Fees

UNCOMMITTED	\$261,668	\$0	\$0	\$0	
CUMMING CONSTRUCTION MGMT INC	\$58,462	\$58,462	\$26,055	\$18,375	44.57%
	\$320,130	\$58,462	\$26,055	\$18,375	8.14%

3.02 Construction Management Fees

UNCOMMITTED	\$223,761	\$0	\$0	\$0	
	\$223,761	\$0	\$0	\$0	0.00%

4. Construction Support Costs

4.05 DSA Review Fees

UNCOMMITTED	\$0	\$0	\$0	\$0	
DIVISION OF STATE ARCHITECT	\$188,750	\$188,750	\$188,750	\$188,750	100.00%
	\$188,750	\$188,750	\$188,750	\$188,750	100.00%

4.06 Postage, Printing & Advertising

UNCOMMITTED	\$0	\$0	\$0	\$0	
AMERICAN REPROGRAPHICS CO LLC	\$8,000	\$8,000	\$0	\$0	0.00%
	\$8,000	\$8,000	\$0	\$0	0.00%

4.11 Preliminary Testing (Hazmat, Topo, Geo, etc)

UNCOMMITTED	\$12,517	\$0	\$0	\$0	
NINYO & MOORE	\$30,000	\$30,000	\$0	\$0	0.00%
PSOMAS	\$26,550	\$26,550	\$12,500	\$0	47.08%
	\$69,067	\$56,550	\$12,500	\$0	18.10%

4.12 Utility Connection Fees (Local Permits)

UNCOMMITTED	\$0	\$0	\$0	\$0	
	\$0	\$0	\$0	\$0	

Total 394-9520 Villa Park HS Phase II Planning and Design	\$2,686,708	\$2,188,762	\$753,529	\$326,007	28.05%
---	-------------	-------------	-----------	-----------	--------

394-TBD Villa Park HS Science Center Unallocated Funds F22

5. Unallocated Bond Funds

5.04 Unallocated Bond Funds

UNCOMMITTED	\$1,192,646	\$0	\$0	\$0	
	\$1,192,646	\$0	\$0	\$0	0.00%

Total 394-TBD Villa Park HS Science Center Unallocated Funds F22	\$1,192,646	\$0	\$0	\$0	0.00%
--	-------------	-----	-----	-----	-------

394-9520 Villa Park Unallocated Funds F21

4. Construction Support Costs

4.15 Miscellaneous Fees

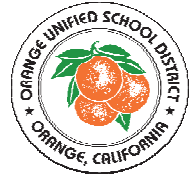
UNCOMMITTED	\$0	\$0	\$0	\$0	
OUSD COST OF INTEREST DISTRIBUTION	\$20,426	\$20,426	\$20,426	\$0	100.00%
	\$20,426	\$20,426	\$20,426	\$0	100.00%

5. Program Reserve

5.03 Interest Earned - Reserve

UNCOMMITTED	\$0	\$0	\$0	\$0	
-------------	-----	-----	-----	-----	--

	\$0	\$0	\$0	\$0	
Total 394-9520 Villa Park Unallocated Funds F21	\$20,426	\$20,426	\$20,426	\$0	100.00%
394-TBD Villa Park Unallocated Funds F22					
5. Unallocated Bond Funds					
5.04 Unallocated Bond Funds					
UNCOMMITTED	\$25,538,287	\$0	\$0	\$0	
	\$25,538,287	\$0	\$0	\$0	0.00%
Total 394-TBD Villa Park Unallocated Funds F22	\$25,538,287	\$0	\$0	\$0	0.00%
Villa Park High School	\$72,698,661	\$34,446,428	\$18,105,851	\$1,624,665	24.91%

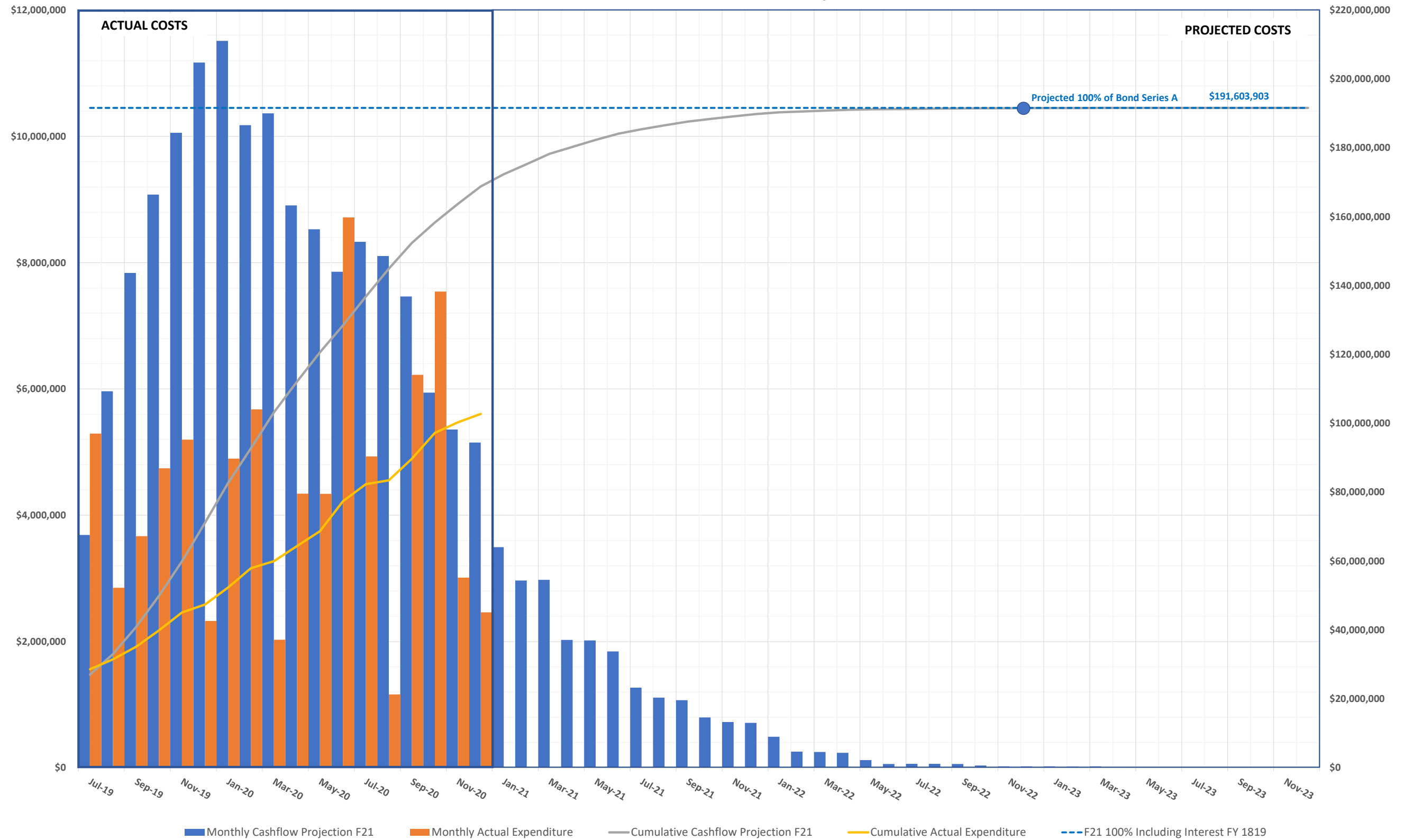


3.0 FINANCIAL REPORT

MEASURE S BOND PROGRAM - Series A 2018 CASH FLOW PROJECTION (Phase I and II)

Actual Costs thru December 31, 2020

Fund 21 Planned Costs Projected as of June 30, 2019



4.0 PROGRAM SCHEDULE SUMMARY



MEASURE S BOND PROGRAM - PHASE I: SCHEDULE SUMMARY

[illegible]

- Villa Park HS Schematic Design & Budget Board Approved 6/8/17

— Canyon HS Schematic Design & Budget Board Approved 5/25/17

El Modena HS Schematic Design & Budget Board Approved 5/11/17

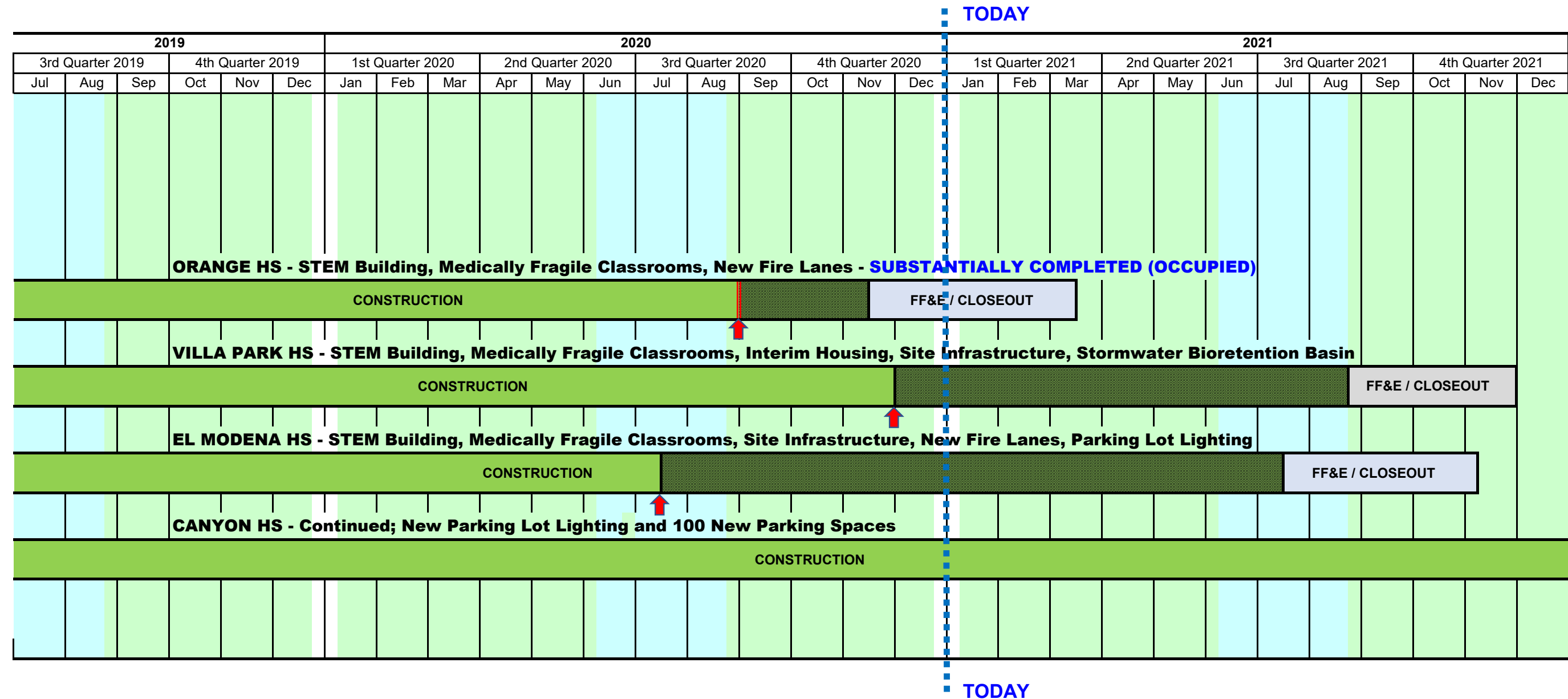
Orange HS Schematic Design & Budget Board Approved 4/13/17

Program Manager Starts Work 1/17/17

- Bond Measure S Passes by 62% on 11/8/16



MEASURE S BOND PROGRAM - PHASE I: SCHEDULE SUMMARY



— SUMMER BREAK

— There is a date under negotiation (see monthly report) that may extend this substantial completion date (the dashed section is the extension under review).

— There has been a Substantial Completion date change approved by the Board of Education (see under specific proeject for the Change Order # referenced)



MEASURE S BOND PROGRAM - PHASE II: SCHEDULE SUMMARY

#				2019																2020											
2018	3rd Quarter 2018			4th Quarter 2018			1st Quarter 2019			2nd Quarter 2019			3rd Quarter 2019			4th Quarter 2019			1st Quarter 2020			2nd Quarter 2020			3rd Quarter 2020			4th Quarter 2020			
Jun	Jul	Aug	Sep	Oct	Nov	Dec	Jan	Feb	Mar	Apr	May	Jun	Jul	Aug	Sep	Oct	Nov	Dec	Jan	Feb	Mar	Apr	May	Jun	Jul	Aug	Sep	Oct	Nov	Dec	
ORANGE HS - Phase II: New two-story classroom/Admin bldg, Bldg 300 layout admin swing space, demo of existing Bldg 100/200.																															
PROGRAM PHASE				CONCEPTUAL DESIGN												DESIGN PHASE															
VILLA PARK HS - Phase II: New two-story, 18-classroom bldg, accessibility, and restroom upgrades to bldg 100/200, demo of bldg 500, and removal of 19 portable classrooms.																															
PROGRAM PHASE				CONCEPTUAL DESIGN												DESIGN PHASE															
EL MODENA HS - Phase II: Renovation of four (4) classroom bldgs (bldgs 200, 300, 400 and 500), library, bldg 800 (CTE), and expand Admin Bldg, new one-story classroom bldg and two bridges (2nd flr).																															
PROGRAM PHASE				CONCEPTUAL DESIGN												DESIGN PHASE															
CANYON HS - Phase II: Bldg (C) remove and replace HVAC systems, electrical systems, fire alarm, door & hardware, glazing, IT connectivity, insulate bldg, renovate restrooms, reconfigure lounge.																															
PROGRAM PHASE												CONCEPTUAL DESIGN		DESIGN PHASE																	
PHASE 2 PROJECTS (as of August 2019 Monthly Report)																															
PROGRAM PHASE						CONCEPTUAL / DESIGN PHASE												DSA REVIEW & APPROVAL													



SUMMER BREAK

Conceptual Design Board Approved 5/9/19 for Canyon HS

Conceptual Design Board Approved 12/13/18

Phase II Design & Budget Board Approved 7/25/19

Orange HS

Orange HS

El Modena HS

El Modena HS

Villa Park HS

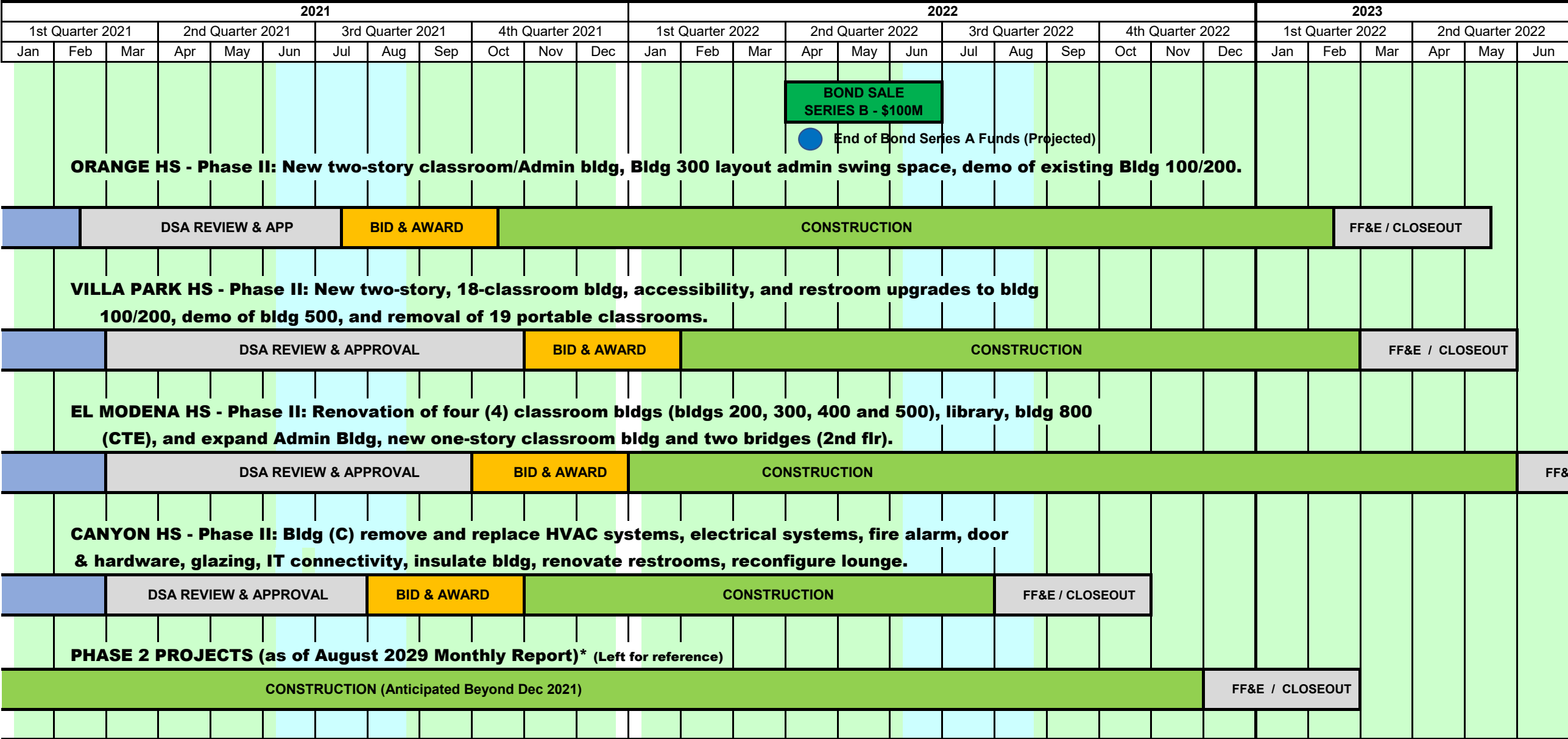
Villa Park HS

Canyon HS



MEASURE S BOND PROGRAM - PHASE II SCHEDULE SUMMARY

TODAY



TODAY

— SUMMER BREAK

- Phase II Design Document & Construction Estimate Board Approval
- Orange HS - November 19, 2020 Board Meeting
- El Modena HS - October 15, 2020 Board Meeting
- Villa Park HS - August 13, 2020 Board Meeting
- Canyon HS - December 15, 2020 Board Meeting

Board of Education

Kathryn A. Moffat, President
Andrea Yamasaki, Vice-President
Kris Erickson, Clerk
Rick Ledesma
John Ortega
Ana Page
Angie Schlueter-Rumsey

Gunn Marie Hansen, Ph.D.
Superintendent

David A. Rivera
**Assistant Superintendent/CBO
Business Services**

Scott Harvey
**Senior Executive Director
Administrative Services**



Facilities & Planning Department
Measure S Bond Program
726 W. Collins Avenue
Orange, CA 92867
T: (714) 628-4500