



ORANGE UNIFIED SCHOOL DISTRICT

Measure S Bond Program

September 2020 Monthly Progress Report



PERIOD COVERED:

September 1-30, 2020

FISCAL YEAR

FY 2020-2021

PROGRESS REPORT NO.

PR-039-2021-039

PREPARED BY:

CUMMING
Building Value Through Expertise



TABLE OF CONTENTS

1.0 Executive Summary

- 1.1 Program Summary
- 1.2 Program Highlights/Key Milestones
- 1.3 Look Ahead (next 90 days)

2.0 Project Status Report

- Canyon HS – Science Center
- El Modena HS – Science Center
- Orange HS – Utility Infrastructure (Increment # 1)
- Orange HS – Science Center (Increment # 2)
- Villa Park HS – Interim Housing & Science Center

3.0 Financial Report

- 3.1 Project Cost Estimate
 - Budget vs Actuals with Vendor details per High School
- 3.2 Cash Flow Projections

4.0 Program Schedule Summary

- 4.1 Phase I Schedule Summary
- 4.2 Phase II Schedule Summary



1.0 EXECUTIVE SUMMARY

1.1 Program Summary

Division of State Architects (DSA) approval to establish design criteria completed as follows:

- (Completed) October 24, 2019 - Villa Park HS New Parking and Drop Off (04-118521).
- (Completed) June 25, 2019 - Orange HS Custom Tensile Fabric Shade Structures (04-118351)
- (Completed) May 2, 2019 - Canyon HS Interim Modular Kitchen (04-118418)
- (Completed) January 31, 2019 - Canyon HS Science Center (04-117300)
- (Completed) November 6, 2018 - El Modena HS Science Center (04-117098)
- (Completed) August 16, 2018 - Villa Park HS Science Center (04-117022)
- (Completed) July 12, 2018 - Orange HS Science Center (Increment # 2) (04-116859)
- (Completed) April 10, 2018 - Orange HS Increment # 1 (Satellite Kitchen) (04-116673.2)
- (Completed) March 1, 2018 - Orange HS Increment #1 (Infrastructure Upgrades, Move Relocatable Buildings, Bus Drop-Off, Restroom Renovation Project) (04-116673.1)
- (Completed) February 7, 2018 - Villa Park HS Interim Housing (DSA Application #04-116788)

Construction started / completed, as follows:

- (Construction Start - June 15, 2018
 - **Completed** September 4, 2019 – Orange HS Site Infrastructure (Increment #1) (04-116673.1)
- (Construction Start) June 12, 2019 – Canyon HS Science Center
 - **Completed** August 7, 2020 – Interim Modular Kitchen (04-118418)
- (Construction Start) April 2, 2019 – El Modena HS Science Center
- (Construction Start) February 18, 2019 – Orange HS Science Center (Increment #2)
 - **Completed** April 8, 2020 – Custom Tensile Fabric Shade Structure (04-118351)
- (Construction Start) January 7, 2019 – Villa Park HS (Interim Housing and Science Center)
 - **Completed** April 26, 2019 – Install ten Portable Modular Buildings (10) (04-116788)

1.2 Program Highlights/Key Milestones

California Environmental Quality Act (CEQA) Compliance Achieved (as required by law):

- Villa Park HS – Notice of Exemption (Board approved on 9/20/18).
- Canyon HS – Notice of Exemption (Board approved on 7/26/18).
- Orange HS – Notice of Exemption (Board approved on 3/8/18).
- El Modena HS – Notice of Exemption (Board approved on 3/8/18).

Phase II Measure S Bond Project Development Update:

- As of 09/30/20 the remote schematic design meetings are continuing to be being held with the Architectural teams and school staff, based on design progress.



- As of 9/30/20, the topographic and geotechnical surveys needed to assess current site conditions/elevations, provide reporting, and submit any required mapping, for the design preparation of the Phase II design projects, are being prepared by the various survey services per school site.
- As of 9/30/20, HED is preparing the completed design document phase for El Modena, for recommendation to the Board to proceed to the final design phase and DSA submission.
- As of 9/30/20, the CEQA process for these four (4) Phase II projects is currently being reviewed.
- The first of four Board presentations was given on 8/13/20 by LPA Architects on the Measure S Phase II construction project at Villa Park High School. Recommended moving forward to DSA submission based on the update of the completed design development process.
- On 9/17/20, LPA presented the completed design document phase for Villa Park HS, to DSA for a Pre-Application review meeting. In attendance were DSA, LPA, District and Program Management.

Program Wide Cash Flow Projection / Bond Issuance

- As of 09/30/20 the cash flow has been re-assessed based on the current projections of the Phase II project under design and the nearing completion of the Orange HS, Phase I project.
- Analysis data on the slow spending in the Phase I program and current market conditions due to the COVID-19 pandemic, it appears that selling Bonds before May 2022 would not be cost effective.

Project Achievements:

- As of 09/10/20, the Board of Education approved the services of a moving company to relocate classrooms at all four high comprehensive schools due to the completion of Measure S funded science center building projects (Phase I only). Moving services will commence in October 2020 and projects will be completed as needed throughout the next year. Based on an informal Request for Proposals for moving services, including six (6) moving contractors, Beltmann Group has proposed to provide the services at a competitive rate of \$16,989 and has extensive knowledge of school district facilities. An additional contingency of \$1,699 (10%) has been added for a total requested authorization of \$18,688.
- At Orange HS, in preparation of new STEM building, moving supplies have been delivered to each teacher in 15 classrooms. Hazmat items were identified and removed from existing classrooms and campus. Surplus items from classrooms were identified for removal from campus. A logistic plan was provided to the Principal for training and move criteria, for review and approval. Confirmation of the furniture delivery and installation date scheduled for 10/12.
- As of 9/10/20, the Board of Education approved gkkworks/Cannon Design's



Schematic Design for the Science Center at Canyon High School. The City of Anaheim has requested a new hydrology study, while the Anaheim Public Utility requires a legal easement assessment for the newly installed power lines for the Canyon High School Science Center. gkkworks/Cannon Design has proposed to provide both engineering services for \$8,120.

- As of 9/10/20, the Board of Education approved Change Order # 04 for Swinerton Builders, Inc. the awarded general contractor at Canyon HS Science Center. The following Change Order lists a general descriptive summary of work, cost increase or decrease to the contract value, and if there is an impact on the contract time. The proposed scope of work and cost were reviewed and found to be reasonable by the Cumming Program Management Team, Gafcon Construction Management Team, Architect, and Facilities staff. Change Order No. 4: \$88,353– 8 Days Additional Contract Time includes; Surgical demolition of the kitchen building to protect existing areas, extra efforts to maintain MPR power feeds, create a thickened concrete edge to protect the flat surface area at MPR storefront, and time and materials for removal and remediation of wet soils. The total value of the contract, inclusive of Amendments 1-4, will increase from \$38,712,210 to \$38,800,563. Total Current Percentage Change from Original Contract = 1.04%
- As of 09/10/20, processing Pinner (OHS) payment application # 19 (August), reflecting 91% paid overall completion, reflecting 481 calendar days elapsed.
- As of 09/24/20, processing Angeles (EMHS) payment application # 15 (July) reflecting 49% paid overall completion, reflecting 230 calendar days elapsed.
- As of 09/28/20, processing Angeles (VPHS) payment application # 18 (August) reflecting 42% paid overall completion, reflecting 290 calendar days elapsed.
- As of 09/28/20, processing Swinerton (CHS) payment application # 15 (August) reflecting 34% paid overall completion, reflecting 305 calendar days elapsed.

1.3 Look Ahead (next 90 days)

Board of Education Agenda

October 15th

1. Recommend approval of Change Order No. 5: \$80,989.78– 0 Days Additional Contract Time. The following Change Order lists a general descriptive summary of work, cost increase to the contract value, Added new 8-inch fire line main across Imperial Hwy, per City of Anaheim standards.
The total value of the contract, inclusive of change orders 1 - 5, will increase from \$38,800,560 to \$38,881,550, for a total current percentage change from original contract = 1.25%, to Swinerton Builders, Inc., District awarded Bid No. S1819-006, Canyon High School Science Center.



The proposed scope of work and cost were reviewed and found to be reasonable by the Cumming Program Management, Gafcon Construction Management, Architect, and Facilities staff.

2. Recommendation to proceed to construction documents phase for Harley Ellis Devereaux (HED) Architects, Phase II project at El Modena High School. HED will provide a presentation of the completed design development process for the includes the following design elements: Minor renovation and utility/security/technology and restroom upgrades to Building 200/250/300/400/450/500 and 800, two new two-story iMOD classroom buildings. On July 25, 2019, the Board approved HED Architects to provide the project design, DSA submittal and construction administration for Measure S Phase II construction projects at El Modena High School. The proposed Phase II project is estimated at approximately \$25 million for construction only. This does not include construction management and other support costs.

Program Wide

- Orange HS Science Center – completing interior framing, concrete paving work, exterior framing and sheathing, setting door and window frames, setting HVAC units, interior lighting fixture, outlets, setting windows, in addition to coordinating with the City on the street improvements off Walnut.
- Orange HS Science Center – Continue with the schematic design on the approved Phase II scope of work. Prepare for presentation to the Board of Education for approval to move forward to final design. Prepare for DSA pre-application meeting.
- Orange HS Science Center – Review the Phase II schematic design cost estimate from the Architect for adherence to budget. Revise the design to conform to budget.
- Orange HS Science Center – Move Manager continues to provide moving supplies and assist teachers with the packing of items to be relocated to the new Science Building. Job walk with the furniture vendor scheduled for 10/7 and delivery/installation of furniture scheduled for 10/12 through 10/23. Surplus items from classrooms and campus removal to be scheduled. Assist and coordinate training for Audio/Visual, lab equipment, and appliance for teachers in the new building (weeks of 11/2 & 11/10). Preparation and planning the relocation into the new building (11/14) and post-move assistance and removal of moving boxes (11/15 to 11/20).
- El Modena HS Science Center – Continue the final stages of steel erection, pouring slab on grade, setting steel for the decks, grade beams, columns, footings and interior utility line runs.
- El Modena HS Science Center – Continue with the schematic design on the approved Phase II scope of work. Prepare for presentation to the Board of Education on the 10/15 meeting for approval to move forward to final design. Prepare for DSA pre-application meeting.



- El Modena HS Science Center – Review the Phase II schematic design cost estimate from the Architect for adherence to budget. Revise the design to conform with the budget.
- El Modena HS Science Center – DSA Review of the Quad design application (04-119124).
- El Modena HS Science Center – Discussion and negotiation regarding time impact and recovery schedule analysis, with Angeles Contractor, Inc. (ACI) executives, Arcadis, Program Management and District, ongoing.
- El Modena HS Science Center – Move Manager continues preparation for El Modena HS relocations (teacher meetings, rooms/items relocating review, moving supplies orders/delivery, hazmat, and surplus items removal), new furniture delivery, and assist in OFCI delivery.
- Villa Park HS Interim Housing & Science Center – Continue the finalizing of steel erection, pouring slab on grade, setting steel for the decks, grade beams, columns, footings, interior utility line runs on the new science center building.
- Villa Park HS Interim Housing & Science Center – Prepare to execute a Partial Occupancy letter date 10/9/20, for the District use of the work under the approved allowance to add the new parking and drop off zone project 04-118521.
- Villa Park HS – Complete the construction design phase and move to the submission to DSA on the approved Phase II scope of work.
- Villa Park HS Science Center – Review the Phase II schematic design cost estimate from the Architect for adherence to budget. Revise the design to conform to budget.
- Villa Park HS Science Center – Move Manager continues preparation for Villa Park HS relocations (teacher meetings, rooms/items relocating review, moving supplies orders/delivery, hazmat, and surplus items removal), new furniture delivery, and assist in OFCI delivery.
- Canyon HS Science Center – Continue with the schematic design on the approved Phase II scope of work. Prepare for presentation to the Board of Education for approval to move forward to final design. Prepare for DSA pre-application meeting.
- Canyon HS Science Center – Review the Phase II schematic design cost estimate from the Architect for adherence to budget. Revise the design to conform to budget.
- Canyon HS Science Center – Preparing MPR and kitchen for turnover to Canyon HS in the fall 2020, for student use.



2.0 PROJECT STATUS REPORT



Canyon High School
New STEM Building

CANYON HIGH SCHOOL
New STEM Building



EL MODENA SCIENCE CENTER
03.18.2017

Overall View

HED
12



Orange High School Science Center



AT VILLA PARK HIGH SCHOOL
LPA

CANYON HIGH SCHOOL
HOME OF THE COMANCHES

CANYON HS SCIENCE CENTER

- ✓ 12 Laboratory Rooms
- ✓ 12 General Classrooms
- ✓ Student Services
- ✓ New Food Services

- ✓ New Multi-Purpose Room Entry
- ✓ Parking Lot Improvements
- ✓ Infrastructure Upgrade and Improvements
- ✓ Landscape Improvements

Project Update (Construction):

- As of 09/30/20, Swinerton is preparing beam footing, foundation work, to prep for structural steel erection, continuing with ramps to the gym, sidewalk pours, site excavation, grading, parking lot paving, and fencing trenching within the new science center building footprint.
- As of 09/30/20 Pursuant to the negotiated recovery settlement agreement with involving District, Program Management, Gafcon, and Swinerton, Gafcon is preparing a change order # 06 that will outline the accepted delay days and change the substantial completion date.
- As of 09/28/20, to keep construction moving, the following construction directive (CD) was issued:
 - CD # 34 for a not-to-exceed (NTE) price of \$8,000 to replace 24 anchor bolts along gridline "M", per RFI 354.
 - CD # 32 for a not-to-exceed (NTE) price of \$7,500 to sawcut and remove the base paving in parking lot # 2.
- As of 09/28/20, processing payment application # 15 (August) reflecting 34% paid overall completion, reflecting 305 calendar days elapsed.

See Construction Photo's below:



Left to right: Rebar preparation and form for cast in place concrete beam and footing pours for STEM, rebar for columns being set, rebar for stair footing being set in place, concrete slab pours.



EL MODENA HS SCIENCE CENTER

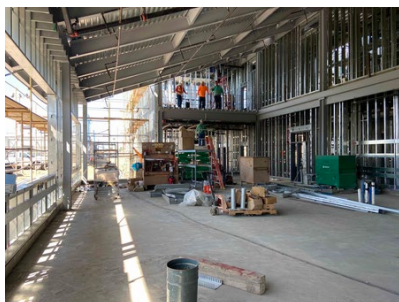
- ✓ 12 Laboratory Rooms
- ✓ 1 General Classrooms
- ✓ 2 Medically Fragile Classrooms

- ✓ Relocation of Campus MDF
- ✓ Technology & Utility Upgrade
- ✓ Landscape Improvements

Project Update (**Construction**):

- As of 09/30/20, Angeles is setting steel for the decks, beams, columns, footings, correction of continuity and cap plates, interior utility line runs, stairs, HVAC ductwork, roof framing and decking.
- As of 09/30/2020, the El Modena HS Science Center Quad Design (04-119124) DSA continues with review.
- As of 09/30/20 Pursuant to the negotiated recovery settlement agreement not being accepted by Angeles Contractor executives, Arcadis, Program Management and the District prepare a re-baseline schedule submission for ACI's review and agreement. As a result of further project team discussion, the un-substantiated substantial completion date has moved to March 2021.
- As of 09/30/20, There have been some Owner Furnished Contractor Installed (OFCI) items delivered and stored in the Facilities and Planning warehouse.
- As of 09/10/20, The Move Services contract for Beltmann Group was approved by the Board.
- As of 09/24/20, processing payment application # 15 (July) reflecting **49%** paid overall completion, reflecting **230 calendar days** elapsed.

[See Construction Photo's below:](#)



Left to right: 1st and 2nd floor Interior duct runs and framing layout, interior piping runs (horizontal and vertical), exterior steel frame for building siding, mechanical room equipment being set.



Orange High School

"ONCE A PANTHER, ALWAYS A PANTHER"



ORANGE HS SCIENCE CENTER

- ✓ 12 Laboratory Rooms
- ✓ 1 General Classrooms

- ✓ New Panther Pavilion Plaza
- ✓ 2 Medically Fragile Classrooms

Project Update Increment # 2 – Science Center (Construction):

- As of 09/30/20, Pinner is completing interior framing, concrete paving work, exterior framing and sheathing, setting door and window frames, setting HVAC units, interior lighting fixture, outlets, setting windows, in addition to coordinating with the City on the street improvements off Walnut.
- As of 09/30/20, All Owner Furnished Contractor Installed (OFCI) items have been received, except for the Kitchen appliances and the Scientific Refrigerator/Freezer, which are expected to be delivered to the site on October 7th.
- As of 09/30/20, the project team has been discussing with Pinner the schedule delays associated with COVID and other factors. Pinner's substantial completion date has moved to October 19, 2020.
- As of 09/30/20, to keep construction moving, the following construction directive (CD) was issued:
 - CD # 41 for a not-to-exceed (NTE) price of \$5,000 to revise the gas meter assembly per Southern California Gas regulatory requirements.
- As of 09/10/20, The Move Services contract for Beltmann Group was approved by the Board. In preparation of new STEM building, moving supplies have been delivered to each teacher in 15 classrooms. Hazmat items were identified and removed from existing classrooms and campus. Surplus items from classrooms were identified for removal from campus. A logistic plan was provided to the Principal for training and move criteria, for review and approval. Confirmation of the furniture delivery and installation date scheduled for 10/12.
- As of 09/10/20, processing payment application # 19 (August), reflecting 91% paid overall completion, reflecting 481 calendar days elapsed.

See Construction Photo's below:



Left to right: Science classroom finishes, concrete walkway prep for concrete pour, finishes showing brick veneer exterior wall and outside stair rail, interior corridor finishes.



VILLA PARK HIGH SCHOOL

SCHOOL OF EXCELLENCE

VILLA PARK HS SCIENCE CENTER

- ✓ 12 Laboratory Rooms
- ✓ 2 General Classrooms
- ✓ 2 Medically Fragile Classrooms

- ✓ Demolish existing building 300
- ✓ Install 10 New Portable Buildings

Project Update ([Construction](#)):

- As of 09/30/20, Angeles is finalizing steel correction for continuity, setting steel for the decks, grade beams, columns, footings, interior utility line runs on the new science center building, as well as completing the punch list work for the parking drop off entrance. Coordinating with the City of Villa Park on the street signs and other traffic improvements.
- As of 09/30/20, the drop off zone (04-118521) work, under CD-031, is nearing completion, District to prepare acceptance for occupancy letter to allow full use at the staff and student return.
- As of 09/30/20, There have been some Owner Furnished Contractor Installed (OFCI) items delivered and stored in the Facilities and Planning warehouse.
- As of 09/10/20, The Move Services contract for Beltmann Group was approved by the Board.
- As of 09/28/20, processing payment application # 18 (August) reflecting **42%** paid overall completion, reflecting **290 calendar days** elapsed.

[See Construction Photo's below:](#)



Left to right: Various new drop off area in front of the school along Taft, traffic light, new turn-in/out with asphalt paving and striping, new concrete curbs along the parking areas, new shrubbery along with new irrigation lines replaced.



3.0 FINANCIAL REPORT

3.1 Project Cost Estimate

Measure S Bond Program

Financial Report for September 2020

QSS Data thru 9/30/2020

	Budget	Contracted to Date	Expended to Date	Quarterly Expense Jul '20 - Sep '20	% Expended
PROGRAM					
Phase 1 - HS Science Center	\$205,840,526	\$155,365,696	\$88,251,930	\$11,277,743	42.87%
Phase 2	\$85,763,377	\$6,431,417	\$1,608,697	\$1,021,841	1.88%
TOTAL	\$291,603,903	\$161,797,112	\$89,860,627	\$12,299,584	30.82%
Canyon High School					
Phase 1 - HS Science Center	\$68,948,871	\$48,680,366	\$19,447,190	\$2,396,038	28.21%
Phase 2	\$4,317,410	\$820,268	\$137,819	\$46,290	3.19%
TOTAL	\$73,266,281	\$49,500,634	\$19,585,009	\$2,442,328	26.73%
El Modena High School					
Phase 1 - HS Science Center	\$40,164,491	\$33,332,475	\$17,301,662	\$2,019,703	43.08%
Phase 2	\$32,608,506	\$1,978,950	\$611,248	\$478,959	1.87%
TOTAL	\$72,772,997	\$35,311,425	\$17,912,911	\$2,498,663	24.61%
Orange High School					
Phase 1 - HS Science Center	\$51,952,701	\$41,259,993	\$35,532,788	\$4,265,624	68.39%
Phase 2	\$20,913,262	\$1,586,811	\$348,733	\$145,070	1.67%
TOTAL	\$72,865,963	\$42,846,804	\$35,881,521	\$4,410,694	49.24%
Villa Park High School					
Phase 1 - HS Science Center	\$44,774,463	\$32,092,861	\$15,970,289	\$2,596,378	35.67%
Phase 2	\$27,924,199	\$2,045,387	\$510,897	\$351,522	1.83%
TOTAL	\$72,698,662	\$34,138,248	\$16,481,186	\$2,947,900	22.67%



Measure S Bond Program

Financial Report for September 2020

Budget vs Actuals - By School and Budget Category with Vendor Detail

QSS Data thru 9/30/2020

	Budget	Contracted to Date	Expended to Date	Quarterly Expense Jul '20 - Sep '20	% Expended
Canyon High School					
390-9520 Canyon HS Science Center (DSA 04-117300)					
1. Design Cost					
1.01 Architect					
UNCOMMITTED	\$21,720	\$0	\$0	\$0	
GKKWORKS CANNON DESIGN	\$3,113,930	\$3,113,930	\$2,809,706	\$46,950	90.23%
LIONAKIS	\$14,058	\$14,058	\$14,058	\$0	100.00%
	\$3,149,708	\$3,127,988	\$2,823,764	\$46,950	89.65%
2. Construction Cost					
2.01 Construction					
UNCOMMITTED	\$1	\$0	\$0	\$0	
SWINERTON BUILDERS	\$37,658,651	\$37,658,651	\$11,519,667	\$1,925,860	30.59%
	\$37,658,652	\$37,658,651	\$11,519,667	\$1,925,860	30.59%
2.02 OFCI and Other Construction					
UNCOMMITTED	\$549,966	\$0	\$0	\$0	
ACCO ENGINEERED SYSTEMS INC	\$159,986	\$159,986	\$128,188	\$0	80.13%
AMERICAN REPROGRAPHICS CO LLC	\$1,026	\$1,026	\$0	\$0	0.00%
CITY OF ANAHEIM - ELECTRICAL ENGINEERING DIV	\$91,340	\$91,340	\$91,340	\$0	100.00%
	\$802,317	\$252,351	\$219,529	\$0	27.36%
2.11 Construction Cost Escalation					
UNCOMMITTED	\$0	\$0	\$0	\$0	
	\$0	\$0	\$0	\$0	
3. Program and Construction Management					
3.01 Program Management Fees					
UNCOMMITTED	\$1,002,060	\$0	\$0	\$0	
CUMMING CONSTRUCTION MGMT INC	\$1,198,897	\$2,179,717	\$919,251	\$123,111	76.67%
	\$2,200,957	\$2,179,717	\$919,251	\$123,111	41.77%
3.02 Construction Management Fees					
UNCOMMITTED	\$1,130,113	\$0	\$0	\$0	
CORDOBA CORPORATION	\$74,438	\$74,438	\$67,499	\$11,340	90.68%
GAFCON INC	\$1,516,569	\$2,435,801	\$1,508,107	\$115,194	99.44%
	\$2,721,119	\$2,510,238	\$1,575,606	\$126,534	57.90%
4. Construction Support Costs					
4.01 Rental					
UNCOMMITTED	\$1	\$0	\$0	\$0	
	\$1	\$0	\$0	\$0	0.00%
4.02 Title, Environmental, Stormwater Management					

UNCOMMITTED	\$57,079	\$0	\$0	\$0	
CHICAGO TITLE COMPANY	\$750	\$750	\$750	\$0	100.00%
CITY OF ANAHEIM	\$2,000	\$2,000	\$2,000	\$0	100.00%
CITY OF ANAHEIM - WATER	\$3,082	\$3,082	\$3,082	\$0	100.00%
COUNTY OF ORANGE - ENVIRONMENTAL HEALTH	\$1,615	\$1,615	\$1,615	\$0	100.00%
ENVIRONMENTAL AUDIT INC	\$50,800	\$50,800	\$21,375	\$0	42.08%
OUSD COST OF INTEREST DISTRIBUTION	\$1	\$1	\$1	\$0	100.00%
	\$115,327	\$58,248	\$28,823	\$0	24.99%
4.03 Commissioning					
UNCOMMITTED	\$9,841	\$0	\$0	\$0	
P2S ENGINEERING INC	\$49,202	\$49,202	\$28,762	\$306	58.46%
	\$59,043	\$49,202	\$28,762	\$306	48.71%
4.04 Builders Risk Insurance					
UNCOMMITTED	\$0	\$0	\$0	\$0	
	\$0	\$0	\$0	\$0	
4.05 DSA Review Fees					
UNCOMMITTED	\$76,626	\$0	\$0	\$0	
DIVISION OF STATE ARCHITECT	\$504,370	\$504,370	\$504,370	\$0	100.00%
	\$580,996	\$504,370	\$504,370	\$0	86.81%
4.06 Postage, Printing & Advertising					
UNCOMMITTED	\$59,830	\$0	\$0	\$0	
AMERICAN REPROGRAPHICS CO LLC	\$13,561	\$13,561	\$10,811	\$98	79.72%
SOUTHERN CALIFORNIA NEWS GROUP	\$2,605	\$2,605	\$2,605	\$0	100.00%
	\$75,997	\$16,167	\$13,416	\$98	17.65%
4.07 DSA Inspection (IOR)					
UNCOMMITTED	\$139,851	\$0	\$0	\$0	
KNOWLAND CONSTRUCTION SERVICES	\$454,016	\$454,016	\$146,784	\$28,072	32.33%
	\$593,867	\$454,016	\$146,784	\$28,072	24.72%
4.08 DSA Construction Phase Testing (LOR)					
UNCOMMITTED	\$462,291	\$0	\$0	\$0	
AMERICAN ENGINEERING LABORATORIES INC	\$185,580	\$185,580	\$153,150	\$65,912	82.52%
	\$647,871	\$185,580	\$153,150	\$65,912	23.64%
4.09 Relocation					
UNCOMMITTED	\$23,140	\$0	\$0	\$0	
ULINE INC	\$1,860	\$1,860	\$0	\$0	0.00%
	\$25,000	\$1,860	\$0	\$0	0.00%
4.10 Labor Compliance					
UNCOMMITTED	\$47,498	\$0	\$0	\$0	
	\$47,498	\$0	\$0	\$0	0.00%
4.11 Preliminary Testing (Hazmat, Topo, Geo, etc)					
UNCOMMITTED	\$561,128	\$0	\$0	\$0	
C BELOW SUBSURFACE IMAGING (Subsurface Investigation)	\$8,445	\$8,445	\$8,445	\$0	100.00%
CALIFORNIA GEOLOGICAL SURVEY (Geology and Seismology Review)	\$3,600	\$3,600	\$3,600	\$0	100.00%
ENVIRONMENTAL NETWORK CORPORATION	\$20,210	\$20,210	\$0	\$0	0.00%
HARRINGTON GEOTECHNICAL ENGINEERING INC (Geotechnical Soils Investigation)	\$13,500	\$13,500	\$13,500	\$0	100.00%
PROVENCER, GEORGE (dba PROVO ENGINEERING)	\$720	\$720	\$720	\$0	100.00%
RMA GROUP (dba SITESCAN)	\$26,103	\$26,103	\$26,103	\$0	100.00%
XICOTENCATL ENRIQUE SALAZAR (Topographical Survey)	\$20,100	\$20,100	\$20,100	\$0	100.00%
	\$653,806	\$92,678	\$72,468	\$0	11.08%
4.12 Utility Connection Fees (Local Permits)					

UNCOMMITTED	\$173,033	\$0	\$0	\$0	
AT&T	\$5,302	\$5,302	\$5,302	\$0	100.00%
CITY OF ANAHEIM - ELECTRICAL ENGINEERING DIV	\$2,756	\$2,756	\$2,756	\$0	100.00%
CROWN CASTLE INTERNATIONAL	\$6,455	\$6,455	\$6,455	\$0	100.00%
SOUTHERN CALIFORNIA GAS CO	\$2,445	\$2,445	\$2,445	\$0	100.00%
	\$189,991	\$16,958	\$16,958	\$0	8.93%
4.13 FF&E (Laboratory Tables and Chairs, other)					
UNCOMMITTED	\$666,227	\$0	\$0	\$0	
	\$666,227	\$0	\$0	\$0	0.00%
4.14 Legal Counsel					
UNCOMMITTED	\$94,996	\$0	\$0	\$0	
	\$94,996	\$0	\$0	\$0	0.00%
5. Contingency					
5.01 Construction Contingency					
UNCOMMITTED	\$3,527,791	\$0	\$0	\$0	
	\$3,527,791	\$0	\$0	\$0	0.00%
5.02 Project Contingency					
UNCOMMITTED	\$12,861,855	\$0	\$0	\$0	
	\$12,861,855	\$0	\$0	\$0	0.00%
Total 390-9520 Canyon HS Science Center (DSA 04-117300)	\$66,673,018	\$47,108,024	\$18,022,547	\$2,316,844	27.03%
390-9520 Canyon HS Unallocated Funds F21					
4. Construction Support Costs					
4.15 Miscellaneous Fees					
UNCOMMITTED	\$0	\$0	\$0	\$0	
OUSD COST OF INTEREST DISTRIBUTION	\$36,936	\$36,936	\$36,936	\$0	100.00%
	\$36,936	\$36,936	\$36,936	\$0	100.00%
5. Program Reserve					
5.03 Interest Earned - Reserve					
UNCOMMITTED	\$1,229,345	\$0	\$0	\$0	
	\$1,229,345	\$0	\$0	\$0	0.00%
Total 390-9520 Canyon HS Unallocated Funds F21	\$1,266,281	\$36,936	\$36,936	\$0	2.92%
390-0000 Canyon HS IP Surveillance Camera and Systems					
4. Construction Support Costs					
4.13 FF&E (Laboratory Tables and Chairs, other)					
UNCOMMITTED	\$0	\$0	\$0	\$0	
CDW GOVERNMENT INC (Parts for IP Camera Systems)	\$29,337	\$29,337	\$29,337	\$0	100.00%
DIGITAL NETWORKS GROUP INC (F/I IP Camera Software)	\$7,093	\$7,093	\$7,093	\$0	100.00%
INTER-PACIFIC INC	\$18,163	\$18,163	\$18,163	\$0	100.00%
	\$54,593	\$54,593	\$54,593	\$0	100.00%
Total 390-0000 Canyon HS IP Surveillance Camera and Systems	\$54,593	\$54,593	\$54,593	\$0	100.00%
390-9520 Canyon HS Interim Kitchen (DSA 04-118418)					
1. Design Cost					
1.01 Architect					

UNCOMMITTED	\$0	\$0	\$0	\$0	
GKKWORKS CANNON DESIGN	\$119,620	\$119,620	\$11,475	\$0	9.59%
	\$119,620	\$119,620	\$11,475	\$0	9.59%
2. Construction Cost					
2.01 Construction					
UNCOMMITTED	\$0	\$0	\$0	\$0	
SWINERTON BUILDERS	\$1,053,557	\$1,053,557	\$1,048,571	\$39,026	99.53%
	\$1,053,557	\$1,053,557	\$1,048,571	\$39,026	99.53%
2.02 OFCI and Other Construction					
UNCOMMITTED	\$10	\$0	\$0	\$0	
E.R.E.S. ENTERPRISES INC DBA ECONOMY RESTAURANT EQUIP	\$49,721	\$49,721	\$49,721	\$0	100.00%
THE DICKLER CORPORATION DBA CHEFS TOYS	\$109,449	\$109,449	\$109,449	\$0	100.00%
	\$159,180	\$159,170	\$159,170	\$0	99.99%
4. Construction Support Costs					
4.01 Rental					
UNCOMMITTED	\$0	\$0	\$0	\$0	
ELITE MODULAR LEASING & SALES INC	\$131,733	\$131,733	\$114,798	\$30,131	87.14%
	\$131,733	\$131,733	\$114,798	\$30,131	87.14%
4.05 DSA Review Fees					
UNCOMMITTED	\$0	\$0	\$0	\$0	
DIVISION OF STATE ARCHITECT	\$15,812	\$15,812	\$15,812	\$10,037	100.00%
	\$15,812	\$15,812	\$15,812	\$10,037	100.00%
4.07 DSA Inspection (IOR)					
UNCOMMITTED	\$0	\$0	\$0	\$0	
KNOWLAND CONSTRUCTION SERVICES	\$71,104	\$71,104	\$61,688	\$0	86.76%
	\$71,104	\$71,104	\$61,688	\$0	86.76%
4.08 DSA Construction Phase Testing (LOR)					
UNCOMMITTED	\$0	\$0	\$0	\$0	
AMERICAN ENGINEERING LABORATORIES INC	\$17,100	\$17,100	\$9,219	\$0	53.91%
	\$17,100	\$17,100	\$9,219	\$0	53.91%
4.11 Preliminary Testing (Hazmat, Topo, Geo, etc)					
UNCOMMITTED	\$0	\$0	\$0	\$0	
ENVIRONMENTAL NETWORK CORPORATION	\$4,245	\$4,245	\$3,910	\$0	92.10%
	\$4,245	\$4,245	\$3,910	\$0	92.10%
Total 390-9520 Canyon HS Interim Kitchen (DSA 04-118418)					
	\$1,572,352	\$1,572,342	\$1,424,644	\$79,194	90.61%
390-9520 Canyon HS Phase II Planning and Design					
1. Design Cost					
1.01 Architect					
UNCOMMITTED	\$0	\$0	\$0	\$0	
GKKWORKS CANNON DESIGN	\$663,500	\$663,500	\$43,500	\$43,500	6.56%
	\$663,500	\$663,500	\$43,500	\$43,500	6.56%
1.02 AE Design Contingency					
UNCOMMITTED	\$44,000	\$0	\$0	\$0	
GKKWORKS CANNON DESIGN	\$0	\$44,000	\$0	\$0	
	\$44,000	\$44,000	\$0	\$0	0.00%

3. Program and Construction Management

3.01 Program Management Fees

UNCOMMITTED	\$182,789	\$0	\$0	\$0	
CUMMING CONSTRUCTION MGMT INC	\$21,240	\$21,240	\$2,790	\$2,790	13.14%
	\$204,029	\$21,240	\$2,790	\$2,790	1.37%

3.02 Construction Management Fees

UNCOMMITTED	\$339,600	\$0	\$0	\$0	
	\$339,600	\$0	\$0	\$0	0.00%

4. Construction Support Costs**4.06 Postage, Printing & Advertising**

UNCOMMITTED	\$7,500	\$0	\$0	\$0	
	\$7,500	\$0	\$0	\$0	0.00%

Total 390-9520 Canyon HS Phase II Planning and Design	\$1,258,629	\$728,740	\$46,290	\$46,290	3.68%
--	--------------------	------------------	-----------------	-----------------	--------------

390-TBD Canyon HS Science Center Unallocated Funds F22**5. Unallocated Bond Funds****5.04 Unallocated Bond Funds**

UNCOMMITTED	\$703,502	\$0	\$0	\$0	
	\$703,502	\$0	\$0	\$0	0.00%

Total 390-TBD Canyon HS Science Center Unallocated Funds F22	\$703,502	\$0	\$0	\$0	0.00%
---	------------------	------------	------------	------------	--------------

390-TBD Canyon HS Unallocated Funds F22**5. Unallocated Bond Funds****5.04 Unallocated Bond Funds**

UNCOMMITTED	\$1,737,907	\$0	\$0	\$0	
	\$1,737,907	\$0	\$0	\$0	0.00%

Total 390-TBD Canyon HS Unallocated Funds F22	\$1,737,907	\$0	\$0	\$0	0.00%
--	--------------------	------------	------------	------------	--------------

Canyon High School	\$73,266,281	\$49,500,634	\$19,585,009	\$2,442,328	26.73%
---------------------------	---------------------	---------------------	---------------------	--------------------	---------------

El Modena High School					
------------------------------	--	--	--	--	--

391-0000 El Modena HS IP Surveillance Camera and Systems**4. Construction Support Costs****4.13 FF&E (Laboratory Tables and Chairs, other)**

UNCOMMITTED	\$0	\$0	\$0	\$0	
CDW GOVERNMENT INC (Parts for IP Camera Systems)	\$39,388	\$39,388	\$39,388	\$0	100.00%
DIGITAL NETWORKS GROUP INC (F/I IP Camera Software)	\$11,719	\$11,719	\$11,719	\$0	100.00%
INTER-PACIFIC INC	\$30,073	\$30,073	\$30,073	\$0	100.00%
	\$81,179	\$81,179	\$81,179	\$0	100.00%

Total 391-0000 El Modena HS IP Surveillance Camera and Systems	\$81,179	\$81,179	\$81,179	\$0	100.00%
---	-----------------	-----------------	-----------------	------------	----------------

391-9520 El Modena HS Science Center (DSA 04-117098)**1. Design Cost****1.01 Architect**

UNCOMMITTED	\$140,844	\$0	\$0	\$0	
HARLEY ELLIS DEVEREAUX	\$1,954,014	\$1,954,014	\$1,850,918	\$102,295	94.72%

LIONAKIS	\$14,059	\$14,059	\$14,059	\$0	100.00%
	\$2,108,917	\$1,968,073	\$1,864,977	\$102,295	88.43%
2. Construction Cost					
2.01 Construction					
UNCOMMITTED	\$0	\$0	\$0	\$0	
ANGELES CONTRACTOR, INC	\$25,818,000	\$25,818,000	\$11,654,497	\$1,122,451	45.14%
	\$25,818,000	\$25,818,000	\$11,654,497	\$1,122,451	45.14%
2.02 OFCI and Other Construction					
UNCOMMITTED	\$152,906	\$0	\$0	\$0	
ACCO ENGINEERED SYSTEMS INC	\$355,544	\$355,544	\$335,681	\$50,746	94.41%
AMERICAN REPROGRAPHICS CO LLC	\$1,026	\$1,026	\$0	\$0	0.00%
ARROW RESTAURANT EQUIPMENT	\$14,232	\$14,232	\$0	\$0	0.00%
CAROLINA BIOLOGICAL SUPPLY	\$24,213	\$24,213	\$0	\$0	0.00%
DEVELOPMENT GROUP INC	\$16,058	\$16,058	\$16,058	\$16,058	100.00%
FAIR PLAY SCOREBOARDS	\$17,694	\$17,694	\$17,694	\$17,694	100.00%
FISHER SCIENCE EDUCATION	\$26,188	\$26,188	\$0	\$0	0.00%
FLINN SCIENTIFIC INC	\$12,364	\$12,364	\$0	\$0	0.00%
WW GRAINGER INC	\$2,923	\$2,923	\$1,029	\$0	35.19%
	\$623,147	\$470,241	\$370,461	\$84,497	59.45%
3. Program and Construction Management					
3.01 Program Management Fees					
UNCOMMITTED	\$350,237	\$0	\$0	\$0	
CUMMING CONSTRUCTION MGMT INC	\$871,689	\$967,124	\$633,749	\$76,614	72.70%
	\$1,221,926	\$967,124	\$633,749	\$76,614	51.86%
3.02 Construction Management Fees					
UNCOMMITTED	\$517,599	\$0	\$0	\$0	
ARCADIS U.S. INC	\$1,449,615	\$1,944,170	\$1,400,249	\$68,620	96.59%
CORDOBA CORPORATION	\$74,438	\$74,438	\$70,761	\$11,340	95.06%
	\$2,041,652	\$2,018,608	\$1,471,010	\$79,960	72.05%
4. Construction Support Costs					
4.02 Title, Environmental, Stormwater Management					
UNCOMMITTED	\$42,259	\$0	\$0	\$0	
CHICAGO TITLE COMPANY	\$1,500	\$1,500	\$1,500	\$0	100.00%
CITY OF ORANGE (PUBLIC WORKS)	\$71	\$71	\$71	\$0	100.00%
CITY OF ORANGE (WATER DIVISION)	\$16,048	\$16,048	\$16,048	\$0	100.00%
ENVIRONMENTAL AUDIT INC	\$10,950	\$10,950	\$8,548	\$0	78.06%
OUSD COST OF INTEREST DISTRIBUTION	\$1	\$1	\$1	\$0	100.00%
	\$70,829	\$28,570	\$26,167	\$0	36.94%
4.03 Commissioning					
UNCOMMITTED	\$6,112	\$0	\$0	\$0	
P2S ENGINEERING INC	\$30,558	\$30,558	\$26,442	\$419	86.53%
	\$36,670	\$30,558	\$26,442	\$419	72.11%
4.04 Builders Risk Insurance					
UNCOMMITTED	\$0	\$0	\$0	\$0	
	\$0	\$0	\$0	\$0	
4.05 DSA Review Fees					

UNCOMMITTED	\$70,067	\$0	\$0	\$0	
DIVISION OF STATE ARCHITECT	\$306,338	\$306,338	\$306,338	\$0	100.00%
	\$376,405	\$306,338	\$306,338	\$0	81.39%
4.06 Postage, Printing & Advertising					
UNCOMMITTED	\$27,496	\$0	\$0	\$0	
AMERICAN REPROGRAPHICS CO LLC	\$19,562	\$19,562	\$17,111	\$0	87.47%
SOUTHERN CALIFORNIA NEWS GROUP	\$2,024	\$2,024	\$2,024	\$0	100.00%
	\$49,082	\$21,585	\$19,135	\$0	38.99%
4.07 DSA Inspection (IOR)					
UNCOMMITTED	\$48,000	\$0	\$0	\$0	
BPI INSPECTION SERVICE	\$290,404	\$290,404	\$244,889	\$96,925	84.33%
	\$338,404	\$290,404	\$244,889	\$96,925	72.37%
4.08 DSA Construction Phase Testing (LOR)					
UNCOMMITTED	\$1	\$0	\$0	\$0	
KOURY ENGINEERING & TESTING INC (Geotechnical Engineering)	\$598,647	\$598,647	\$589,099	\$456,059	98.41%
	\$598,648	\$598,647	\$589,099	\$456,059	98.40%
4.09 Relocation					
UNCOMMITTED	\$22,820	\$0	\$0	\$0	
ULINE INC	\$2,180	\$2,180	\$0	\$0	0.00%
	\$25,000	\$2,180	\$0	\$0	0.00%
4.10 Labor Compliance					
UNCOMMITTED	\$30,730	\$0	\$0	\$0	
	\$30,730	\$0	\$0	\$0	0.00%
4.11 Preliminary Testing (Hazmat, Topo, Geo, etc)					
UNCOMMITTED	\$126,207	\$0	\$0	\$0	
ALLEGIAN FIRE PROTECTION INC	\$525	\$525	\$525	\$0	100.00%
CALIFORNIA GEOLOGICAL SURVEY (Geology and Seismology Review)	\$3,600	\$3,600	\$3,600	\$0	100.00%
ENVIRONMENTAL NETWORK CORPORATION	\$3,412	\$3,412	\$0	\$0	0.00%
HARLEY ELLIS DEVEREAUX	\$14,908	\$14,908	\$14,908	\$0	100.00%
NINYO & MOORE	\$29,981	\$29,981	\$29,771	\$0	99.30%
PCA ARBORISTS & CONSULTANTS INC	\$1,569	\$1,569	\$1,569	\$0	100.00%
THE CONVERSE PROFESSIONAL GROUP (Soils Investigation)	\$30,640	\$30,640	\$30,640	\$0	100.00%
	\$210,842	\$84,635	\$81,013	\$0	38.42%
4.12 Utility Connection Fees (Local Permits)					
UNCOMMITTED	\$118,770	\$0	\$0	\$0	
SOUTHERN CALIFORNIA EDISON	\$3,665	\$3,665	\$3,665	\$0	100.00%
STATE WATER RESOURCES CONTROL BOARD (SWRCB)	\$484	\$484	\$484	\$484	100.00%
	\$122,919	\$4,149	\$4,149	\$484	3.38%
4.13 FF&E (Laboratory Tables and Chairs, other)					
UNCOMMITTED	\$94,999	\$0	\$0	\$0	
CDW GOVERNMENT INC (Parts for IP Camera Systems)	\$59,662	\$69,999	\$0	\$0	0.00%
INTER-PACIFIC INC	\$9,256	\$9,256	\$0	\$0	0.00%
SIERRA SCHOOL EQUIPMENT COMPANY	\$495,446	\$495,446	\$0	\$0	0.00%
TURTLE STORAGE dba AMERICAN BICYCLE CO	\$6,871	\$6,871	\$0	\$0	0.00%
VWR INTERNATIONAL LLC	\$47,922	\$52,714	\$0	\$0	0.00%
	\$714,156	\$634,286	\$0	\$0	0.00%
4.14 Legal Counsel					
UNCOMMITTED	\$61,460	\$0	\$0	\$0	

	\$61,460	\$0	\$0	\$0	0.00%
5. Contingency					
5.01 Construction Contingency					
UNCOMMITTED	\$1,981,800	\$0	\$0	\$0	
	\$1,981,800	\$0	\$0	\$0	0.00%
5.02 Project Contingency					
UNCOMMITTED	\$1,906,750	\$0	\$0	\$0	
ARCADIS U.S. INC	\$0	\$0	\$0	\$0	
	\$1,906,750	\$0	\$0	\$0	0.00%
Total 391-9520 El Modena HS Science Center (DSA 04-117098)	\$38,337,337	\$33,243,399	\$17,291,926	\$2,019,703	45.10%
391-9520 El Modena HS Phase II Planning and Design					
1. Design Cost					
1.01 Architect					
UNCOMMITTED	\$64,000	\$0	\$0	\$0	
HARLEY ELLIS DEVEREAUX	\$1,815,560	\$1,815,560	\$499,682	\$471,122	27.52%
	\$1,879,560	\$1,815,560	\$499,682	\$471,122	26.59%
3. Program and Construction Management					
3.01 Program Management Fees					
UNCOMMITTED	\$86,419	\$0	\$0	\$0	
CUMMING CONSTRUCTION MGMT INC	\$59,661	\$59,661	\$7,838	\$7,838	13.14%
	\$146,080	\$59,661	\$7,838	\$7,838	5.37%
3.02 Construction Management Fees					
UNCOMMITTED	\$302,900	\$0	\$0	\$0	
	\$302,900	\$0	\$0	\$0	0.00%
4. Construction Support Costs					
4.06 Postage, Printing & Advertising					
UNCOMMITTED	\$8,000	\$0	\$0	\$0	
	\$8,000	\$0	\$0	\$0	0.00%
4.11 Preliminary Testing (Hazmat, Topo, Geo, etc)					
UNCOMMITTED	\$86,340	\$0	\$0	\$0	
	\$86,340	\$0	\$0	\$0	0.00%
Total 391-9520 El Modena HS Phase II Planning and Design	\$2,422,880	\$1,875,221	\$507,519	\$478,959	20.95%
391-9520 El Modena HS Quad Shade Structures (DSA 04-119124)					
1. Design Cost					
1.01 Architect					
UNCOMMITTED	\$0	\$0	\$0	\$0	
HARLEY ELLIS DEVEREAUX	\$79,340	\$79,340	\$0	\$0	0.00%
	\$79,340	\$79,340	\$0	\$0	0.00%
4. Construction Support Costs					
4.05 DSA Review Fees					
UNCOMMITTED	\$0	\$0	\$0	\$0	
DIVISION OF STATE ARCHITECT	\$9,650	\$9,650	\$9,650	\$0	100.00%

	\$9,650	\$9,650	\$9,650	\$0	100.00%
4.06 Postage, Printing & Advertising					
UNCOMMITTED	\$0	\$0	\$0	\$0	
AMERICAN REPROGRAPHICS CO LLC	\$86	\$86	\$86	\$0	100.00%
	\$86	\$86	\$86	\$0	100.00%
5. Contingency					
5.01 Construction Contingency					
UNCOMMITTED	\$600,000	\$0	\$0	\$0	
	\$600,000	\$0	\$0	\$0	0.00%
Total 391-9520 El Modena HS Quad Shade Structures (DSA 04-119124)	\$689,076	\$89,076	\$9,736	\$0	1.41%
391-TBD El Modena HS Science Center Unallocated Funds F22					
5. Unallocated Bond Funds					
5.04 Unallocated Bond Funds					
UNCOMMITTED	\$1,138,078	\$0	\$0	\$0	
	\$1,138,078	\$0	\$0	\$0	0.00%
Total 391-TBD El Modena HS Science Center Unallocated Funds F22	\$1,138,078	\$0	\$0	\$0	0.00%
391-9520 El Modena HS Unallocated Funds F21					
4. Construction Support Costs					
4.15 Miscellaneous Fees					
UNCOMMITTED	\$0	\$0	\$0	\$0	
OUSD COST OF INTEREST DISTRIBUTION	\$22,550	\$22,550	\$22,550	\$0	100.00%
	\$22,550	\$22,550	\$22,550	\$0	100.00%
5. Program Reserve					
5.03 Interest Earned - Reserve					
UNCOMMITTED	\$64,535	\$0	\$0	\$0	
	\$64,535	\$0	\$0	\$0	0.00%
Total 391-9520 El Modena HS Unallocated Funds F21	\$87,085	\$22,550	\$22,550	\$0	25.89%
391-TBD El Modena HS Unallocated Funds F22					
5. Unallocated Bond Funds					
5.04 Unallocated Bond Funds					
UNCOMMITTED	\$30,017,362	\$0	\$0	\$0	
	\$30,017,362	\$0	\$0	\$0	0.00%
Total 391-TBD El Modena HS Unallocated Funds F22	\$30,017,362	\$0	\$0	\$0	0.00%
El Modena High School	\$72,772,997	\$35,311,425	\$17,912,911	\$2,498,663	24.61%
Orange High School					
392-0000 Orange HS IP Surveillance Camera and Systems					
4. Construction Support Costs					
4.13 FF&E (Laboratory Tables and Chairs, other)					
UNCOMMITTED	\$0	\$0	\$0	\$0	
CDW GOVERNMENT INC (Parts for IP Camera Systems)	\$53,662	\$53,662	\$53,662	\$0	100.00%

DIGITAL NETWORKS GROUP INC (F/I IP Camera Software)	\$13,569	\$13,569	\$13,569	\$0	100.00%
INTER-PACIFIC INC	\$34,837	\$34,837	\$34,837	\$0	100.00%
	\$102,068	\$102,068	\$102,068	\$0	100.00%
Total 392-0000 Orange HS IP Surveillance Camera and Systems	\$102,068	\$102,068	\$102,068	\$0	100.00%
392-9520 Orange HS Science Bldg (DSA 04-116859)					

1. Design Cost

1.01 Architect

UNCOMMITTED	\$151,933	\$0	\$0	\$0	
LIONAKIS	\$1,854,196	\$1,854,196	\$1,765,942	\$106,374	95.24%
	\$2,006,129	\$1,854,196	\$1,765,942	\$106,374	88.03%

2. Construction Cost

2.01 Construction

UNCOMMITTED	\$0	\$0	\$0	\$0	
GIANNELLI ELECTRIC INC	\$14,878	\$14,878	\$14,878	\$0	100.00%
INTEGRATED DEMOLITION AND REMEDIATION (Abatement and	\$44,800	\$44,800	\$44,800	\$0	100.00%
J & A FENCE (Custodial Storage Fencing)	\$0	\$0	\$0	\$0	
KYA SERVICES LLC (Install Carpet)	\$0	\$0	\$0	\$0	
OLESH, KEITH (Termite Services)	\$0	\$0	\$0	\$0	
PINNER CONSTRUCTION	\$26,582,729	\$26,582,729	\$22,197,986	\$3,841,006	83.51%
SOUTHERN CALIFORNIA NEWS GROUP	\$0	\$0	\$0	\$0	
TIME & ALARM SYSTEMS	\$3,100	\$3,100	\$3,100	\$0	100.00%
UNIVERSAL ASPHALT CO (Remove and Patch Asphalt)	\$6,830	\$6,830	\$6,830	\$0	100.00%
	\$26,652,337	\$26,652,337	\$22,267,594	\$3,841,006	83.55%

2.02 OFCI and Other Construction

UNCOMMITTED	\$111,041	\$0	\$0	\$0	
ACCO ENGINEERED SYSTEMS INC	\$62,883	\$62,883	\$62,883	\$11,208	100.00%
AMERICAN REPROGRAPHICS CO LLC	\$1,026	\$1,026	\$0	\$0	0.00%
ARROW RESTAURANT EQUIPMENT	\$4,888	\$4,888	\$0	\$0	0.00%
CAROLINA BIOLOGICAL SUPPLY	\$16,559	\$16,559	\$14,824	\$14,824	89.52%
CITY OF ORANGE (PUBLIC WORKS)	\$2,000	\$2,000	\$2,000	\$0	100.00%
DEVELOPMENT GROUP INC	\$12,914	\$12,914	\$12,914	\$12,914	100.00%
FISHER SCIENCE EDUCATION	\$18,400	\$18,400	\$1,557	\$1,557	8.46%
FLINN SCIENTIFIC INC	\$10,263	\$10,263	\$0	\$0	0.00%
GIANNELLI ELECTRIC INC	\$24,320	\$24,320	\$24,320	\$0	100.00%
GRUETT TREE CO INC (Removal of Trees)	\$7,625	\$7,625	\$7,625	\$0	100.00%
J & A FENCE (Custodial Storage Fencing)	\$6,885	\$6,885	\$6,885	\$0	100.00%
KYA SERVICES LLC (Install Carpet)	\$0	\$0	\$0	\$0	
OLESH, KEITH (Termite Services)	\$1,500	\$1,500	\$1,500	\$0	100.00%
SOUTHERN CALIFORNIA NEWS GROUP	\$0	\$0	\$0	\$0	
TRIMARK RAYGAL LLC	\$0	\$0	\$0	\$0	
VORTEX INDUSTRIES, INC.	\$6,804	\$6,804	\$6,804	\$0	100.00%
WW GRAINGER INC	\$2,292	\$2,292	\$1,373	\$1,263	59.89%
	\$289,399	\$178,358	\$142,684	\$41,766	49.30%

3. Program and Construction Management

3.01 Program Management Fees

UNCOMMITTED	\$423,420	\$0	\$0	\$0	
-------------	-----------	-----	-----	-----	--

\$1,118,330	\$1,170,512	\$670,062	\$126,584	59.92%
\$1,541,750	\$1,170,512	\$670,062	\$126,584	43.46%

3.02 Construction Management Fees

UNCOMMITTED	\$474,355	\$0	\$0	\$0	
BALFOUR BEATTY CONSTRUCTION	\$1,354,991	\$1,354,991	\$1,354,473	\$0	99.96%
CORDOBA CORPORATION	\$74,438	\$74,438	\$66,859	\$11,340	89.82%
	\$1,903,783	\$1,429,429	\$1,421,332	\$11,340	74.66%

4. Construction Support Costs**4.02 Title, Environmental, Stormwater Management**

UNCOMMITTED	\$47,386	\$0	\$0	\$0	
CHICAGO TITLE COMPANY	\$1,500	\$1,500	\$1,500	\$0	100.00%
OUSD COST OF INTEREST DISTRIBUTION	\$1	\$1	\$1	\$0	100.00%
PLACEWORKS INC	\$52,231	\$52,231	\$52,231	\$0	100.00%
STATE WATER RESOURCES CONTROL BOARD (SWRCB)	\$726	\$726	\$726	\$0	100.00%
	\$101,844	\$54,458	\$54,458	\$0	53.47%

4.03 Commissioning

UNCOMMITTED	\$6,117	\$0	\$0	\$0	
P2S ENGINEERING INC	\$30,585	\$30,585	\$27,014	\$484	88.32%
	\$36,702	\$30,585	\$27,014	\$484	73.60%

4.04 Builders Risk Insurance

UNCOMMITTED	\$0	\$0	\$0	\$0	
	\$0	\$0	\$0	\$0	

4.05 DSA Review Fees

UNCOMMITTED	\$119,114	\$0	\$0	\$0	
DIVISION OF STATE ARCHITECT	\$252,750	\$252,750	\$252,750	\$0	100.00%
OUSD REVOLVING CASH	\$500	\$500	\$500	\$0	100.00%
	\$372,364	\$253,250	\$253,250	\$0	68.01%

4.06 Postage, Printing & Advertising

UNCOMMITTED	\$36,302	\$0	\$0	\$0	
AMERICAN REPROGRAPHICS CO LLC	\$11,807	\$11,807	\$8,734	\$0	73.98%
SOUTHERN CALIFORNIA NEWS GROUP	\$8,518	\$8,518	\$8,518	\$0	100.00%
	\$56,626	\$20,325	\$17,252	\$0	30.47%

4.07 DSA Inspection (IOR)

UNCOMMITTED	\$145,585	\$0	\$0	\$0	
KNOWLAND CONSTRUCTION SERVICES	\$321,507	\$321,507	\$258,216	\$36,888	80.31%
	\$467,092	\$321,507	\$258,216	\$36,888	55.28%

4.08 DSA Construction Phase Testing (LOR)

UNCOMMITTED	\$125,025	\$0	\$0	\$0	
NINYO & MOORE	\$327,624	\$327,624	\$221,200	\$24,446	67.52%
	\$452,649	\$327,624	\$221,200	\$24,446	48.87%

4.09 Relocation

UNCOMMITTED	\$21,900	\$0	\$0	\$0	
ULINE INC	\$3,100	\$3,100	\$2,260	\$2,260	72.90%
	\$25,000	\$3,100	\$2,260	\$2,260	9.04%

4.10 Labor Compliance

UNCOMMITTED	\$40,951	\$0	\$0	\$0	
	\$40,951	\$0	\$0	\$0	0.00%

4.11 Preliminary Testing (Hazmat, Topo, Geo, etc)

UNCOMMITTED	\$503,187	\$0	\$0	\$0	
CALIFORNIA GEOLOGICAL SURVEY (Geology and Seismology Review)	\$3,600	\$3,600	\$3,600	\$0	100.00%
KOURY ENGINEERING & TESTING INC (Geotechnical Engineering)	\$13,300	\$13,300	\$13,300	\$0	100.00%
PENCO ENGINEERING INC (Topographical Survey Services)	\$42,350	\$42,350	\$41,070	\$0	96.98%
RMA GROUP (dba SITESCAN)	\$49,533	\$49,533	\$49,533	\$0	100.00%
	\$611,970	\$108,783	\$107,503	\$0	17.57%

4.12 Utility Connection Fees (Local Permits)

UNCOMMITTED	\$154,391	\$0	\$0	\$0	
CITY OF ORANGE (PUBLIC WORKS)	\$2,500	\$2,500	\$2,500	\$0	100.00%
SOUTHERN CALIFORNIA EDISON	\$6,912	\$6,912	\$6,912	\$0	100.00%
	\$163,803	\$9,412	\$9,412	\$0	5.75%

4.13 FF&E (Laboratory Tables and Chairs, other)

	\$7,904	\$7,904	\$0	\$0	0.00%
UNCOMMITTED	\$64,139	\$0	\$0	\$0	
CDW GOVERNMENT INC (Parts for IP Camera Systems)	\$63,627	\$65,624	\$59,658	\$59,658	93.76%
CONEXWEST	\$9,466	\$9,466	\$9,419	\$0	99.51%
SIERRA SCHOOL EQUIPMENT COMPANY	\$464,248	\$464,248	\$0	\$0	0.00%
TURTLE STORAGE dba AMERICAN BICYCLE CO	\$6,871	\$6,871	\$6,537	\$6,537	95.14%
VORTEX INDUSTRIES, INC.	\$0	\$0	\$0	\$0	
VWR INTERNATIONAL LLC	\$34,314	\$37,746	\$8,282	\$8,282	24.13%
	\$650,570	\$591,860	\$83,896	\$74,477	12.90%

4.14 Legal Counsel

UNCOMMITTED	\$81,902	\$0	\$0	\$0	
	\$81,902	\$0	\$0	\$0	0.00%

5. Contingency

5.01 Construction Contingency

UNCOMMITTED	\$2,023,672	\$0	\$0	\$0	
	\$2,023,672	\$0	\$0	\$0	0.00%

5.02 Project Contingency

UNCOMMITTED	\$4,695,265	\$0	\$0	\$0	
	\$4,695,265	\$0	\$0	\$0	0.00%

Total 392-9520 Orange HS Science Bldg (DSA 04-116859)	\$42,173,808	\$33,005,734	\$27,302,074	\$4,265,624	64.74%
392-9520 Orange HS Shade Structure (DSA 04-118351)					

1. Design Cost

1.01 Architect

UNCOMMITTED	\$0	\$0	\$0	\$0	
LIONAKIS	\$17,317	\$17,317	\$17,317	\$0	100.00%
	\$17,317	\$17,317	\$17,317	\$0	100.00%

2. Construction Cost

2.01 Construction

UNCOMMITTED	\$0	\$0	\$0	\$0	
PINNER CONSTRUCTION	\$113,500	\$113,500	\$113,500	\$0	100.00%
	\$113,500	\$113,500	\$113,500	\$0	100.00%

3. Program and Construction Management

3.01 Program Management Fees

UNCOMMITTED	\$0	\$0	\$0	\$0	
CUMMING CONSTRUCTION MGMT INC	\$1,838	\$1,838	\$1,838	\$0	100.00%
	\$1,838	\$1,838	\$1,838	\$0	100.00%

3.02 Construction Management Fees

UNCOMMITTED	\$0	\$0	\$0	\$0	
BALFOUR BEATTY CONSTRUCTION	\$5,956	\$5,956	\$5,956	\$0	100.00%
	\$5,956	\$5,956	\$5,956	\$0	100.00%

4. Construction Support Costs

4.05 DSA Review Fees

UNCOMMITTED	\$0	\$0	\$0	\$0	
DIVISION OF STATE ARCHITECT	\$1,873	\$1,873	\$1,873	\$0	100.00%
	\$1,873	\$1,873	\$1,873	\$0	100.00%

4.07 DSA Inspection (IOR)

UNCOMMITTED	\$0	\$0	\$0	\$0	
KNOWLAND CONSTRUCTION SERVICES	\$1,740	\$1,740	\$1,740	\$0	100.00%
	\$1,740	\$1,740	\$1,740	\$0	100.00%

4.08 DSA Construction Phase Testing (LOR)

UNCOMMITTED	\$0	\$0	\$0	\$0	
NINYO & MOORE	\$7,408	\$7,408	\$7,408	\$0	100.00%
	\$7,408	\$7,408	\$7,408	\$0	100.00%

Total 392-9520 Orange HS Shade Structure (DSA 04-118351)	\$149,631	\$149,631	\$149,631	\$0	100.00%
--	-----------	-----------	-----------	-----	---------

392-9520 Orange HS Site Improvements (DSA 04-116673)					
--	--	--	--	--	--

1. Design Cost

1.01 Architect

UNCOMMITTED	\$0	\$0	\$0	\$0	
LIONAKIS	\$450,189	\$450,189	\$446,286	\$0	99.13%
SILVER CREEK INDUSTRIES INC (Engineering for Warming Kitchen	\$29,682	\$29,682	\$29,682	\$0	100.00%
	\$479,871	\$479,871	\$475,968	\$0	99.19%

2. Construction Cost

2.01 Construction

UNCOMMITTED	\$0	\$0	\$0	\$0	
KYA SERVICES LLC (Install Carpet)	\$20,824	\$20,824	\$9,564	\$0	45.93%
SWINERTON BUILDERS	\$6,556,428	\$6,556,428	\$6,556,428	\$0	100.00%
TRIMARK RAYGAL LLC	\$89,860	\$89,860	\$89,860	\$0	100.00%
	\$6,667,112	\$6,667,112	\$6,655,852	\$0	99.83%

2.02 OFCI and Other Construction

UNCOMMITTED	\$0	\$0	\$0	\$0	
ACCO ENGINEERED SYSTEMS INC	\$209,074	\$209,074	\$209,074	\$0	100.00%
	\$209,074	\$209,074	\$209,074	\$0	100.00%

3. Program and Construction Management

3.01 Program Management Fees

UNCOMMITTED	\$0	\$0	\$0	\$0	
CUMMING CONSTRUCTION MGMT INC	\$115,479	\$115,479	\$115,479	\$0	100.00%
	\$115,479	\$115,479	\$115,479	\$0	100.00%

3.02 Construction Management Fees

UNCOMMITTED	\$0	\$0	\$0	\$0	
BALFOUR BEATTY CONSTRUCTION	\$296,554	\$296,554	\$296,554	\$0	100.00%
	\$296,554	\$296,554	\$296,554	\$0	100.00%

4. Construction Support Costs

4.02 Title, Environmental, Stormwater Management

UNCOMMITTED	\$0	\$0	\$0	\$0	
ORANGE COUNTY HEALTH CARE AGENCY	\$1,470	\$1,470	\$1,470	\$0	100.00%
	\$1,470	\$1,470	\$1,470	\$0	100.00%

4.03 Commissioning

UNCOMMITTED	\$0	\$0	\$0	\$0	
P2S ENGINEERING INC	\$4,755	\$4,755	\$4,667	\$0	98.15%
	\$4,755	\$4,755	\$4,667	\$0	98.15%

4.05 DSA Review Fees

UNCOMMITTED	\$3,853	\$0	\$0	\$0	
DIVISION OF STATE ARCHITECT	\$94,585	\$94,585	\$94,585	\$0	100.00%
	\$98,438	\$94,585	\$94,585	\$0	96.09%

4.06 Postage, Printing & Advertising

UNCOMMITTED	\$1	\$0	\$0	\$0	
AMERICAN REPROGRAPHICS CO LLC	\$7,630	\$7,630	\$7,630	\$0	100.00%
SOUTHERN CALIFORNIA NEWS GROUP	\$1,264	\$1,264	\$1,264	\$0	100.00%
	\$8,895	\$8,894	\$8,894	\$0	99.99%

4.07 DSA Inspection (IOR)

UNCOMMITTED	\$0	\$0	\$0	\$0	
KNOWLAND CONSTRUCTION SERVICES	\$104,480	\$104,480	\$96,985	\$0	92.83%
	\$104,480	\$104,480	\$96,985	\$0	92.83%

4.08 DSA Construction Phase Testing (LOR)

UNCOMMITTED	\$0	\$0	\$0	\$0	
NINYO & MOORE	\$113,255	\$113,255	\$112,544	\$0	99.37%
	\$113,255	\$113,255	\$112,544	\$0	99.37%

4.11 Preliminary Testing (Hazmat, Topo, Geo, etc)

UNCOMMITTED	\$0	\$0	\$0	\$0	
ENVIRONMENTAL NETWORK CORPORATION	\$9,100	\$9,100	\$9,012	\$0	99.03%
	\$9,100	\$9,100	\$9,012	\$0	99.03%

Total 392-9520 Orange HS Site Improvements (DSA 04-116673)	\$8,108,482	\$8,104,629	\$8,081,083	\$0	99.66%
--	-------------	-------------	-------------	-----	--------

392-9520 Orange HS Phase II Planning and Design

1. Design Cost

1.01 Architect

UNCOMMITTED	\$121,050	\$0	\$0	\$0	
LIONAKIS	\$1,409,450	\$1,409,450	\$214,661	\$138,523	15.23%
	\$1,530,500	\$1,409,450	\$214,661	\$138,523	14.03%

3. Program and Construction Management

3.01 Program Management Fees

UNCOMMITTED	\$1	\$0	\$0	\$0	
-------------	-----	-----	-----	-----	--

CUMMING CONSTRUCTION MGMT INC	\$49,836	\$49,836	\$6,547	\$6,547	13.14%
	\$49,837	\$49,836	\$6,547	\$6,547	13.14%
3.02 Construction Management Fees					
UNCOMMITTED	\$372,050	\$0	\$0	\$0	
	\$372,050	\$0	\$0	\$0	0.00%
4. Construction Support Costs					
4.06 Postage, Printing & Advertising					
UNCOMMITTED	\$14,000	\$0	\$0	\$0	
	\$14,000	\$0	\$0	\$0	0.00%
Total 392-9520 Orange HS Phase II Planning and Design	\$1,966,387	\$1,459,286	\$221,207	\$145,070	11.25%
392-TBD Orange HS Science Center Unallocated Funds F22					
5. Unallocated Bond Funds					
5.04 Unallocated Bond Funds					
UNCOMMITTED	\$1,520,780	\$0	\$0	\$0	
	\$1,520,780	\$0	\$0	\$0	0.00%
Total 392-TBD Orange HS Science Center Unallocated Funds F22	\$1,520,780	\$0	\$0	\$0	0.00%
392-9520 Orange HS Unallocated Funds F21					
5. Program Reserve					
5.03 Interest Earned - Reserve					
UNCOMMITTED	\$840,506	\$0	\$0	\$0	
	\$840,506	\$0	\$0	\$0	0.00%
4. Construction Support Costs					
4.15 Miscellaneous Fees					
UNCOMMITTED	\$0	\$0	\$0	\$0	
OUSD COST OF INTEREST DISTRIBUTION	\$25,457	\$25,457	\$25,457	\$0	100.00%
	\$25,457	\$25,457	\$25,457	\$0	100.00%
Total 392-9520 Orange HS Unallocated Funds F21	\$865,963	\$25,457	\$25,457	\$0	2.94%
392-TBD Orange HS Unallocated Funds F22					
5. Unallocated Bond Funds					
5.04 Unallocated Bond Funds					
UNCOMMITTED	\$17,978,844	\$0	\$0	\$0	
	\$17,978,844	\$0	\$0	\$0	0.00%
Total 392-TBD Orange HS Unallocated Funds F22	\$17,978,844	\$0	\$0	\$0	0.00%
Orange High School	\$72,865,963	\$42,846,804	\$35,881,521	\$4,410,694	49.24%
Villa Park High School					
394-0000 Villa Park HS IP Surveillance Camera and Systems					
4. Construction Support Costs					
4.13 FF&E (Laboratory Tables and Chairs, other)					
UNCOMMITTED	\$0	\$0	\$0	\$0	
CDW GOVERNMENT INC (Parts for IP Camera Systems)	\$32,182	\$32,182	\$32,182	\$0	100.00%

DIGITAL NETWORKS GROUP INC (F/I IP Camera Software)	\$8,635	\$8,635	\$8,635	\$0	100.00%
INTER-PACIFIC INC	\$22,133	\$22,133	\$22,133	\$0	100.00%
	\$62,949	\$62,949	\$62,949	\$0	100.00%
5. Contingency					
5.02 Project Contingency					
UNCOMMITTED	\$0	\$0	\$0	\$0	
	\$0	\$0	\$0	\$0	
Total 394-0000 Villa Park HS IP Surveillance Camera and Systems	\$62,949	\$62,949	\$62,949	\$0	100.00%
394-9520 Villa Park HS Science Center (DSA 04-117022)					
1. Design Cost					
1.01 Architect					
UNCOMMITTED	\$235,288	\$0	\$0	\$0	
DKS ASSOCIATES	\$78,310	\$78,310	\$74,310	\$0	94.89%
LIONAKIS	\$14,059	\$14,059	\$14,059	\$0	100.00%
LPA INC	\$2,161,858	\$2,161,858	\$1,972,350	\$87,049	91.23%
	\$2,489,515	\$2,254,227	\$2,060,719	\$87,049	82.78%
2. Construction Cost					
2.01 Construction					
UNCOMMITTED	\$140,145	\$0	\$0	\$0	
ANGELES CONTRACTOR, INC	\$20,231,083	\$20,231,083	\$6,641,505	\$344,124	32.83%
	\$20,371,228	\$20,231,083	\$6,641,505	\$344,124	32.60%
2.02 OFCI and Other Construction					
UNCOMMITTED	\$148,593	\$0	\$0	\$0	
ACCO ENGINEERED SYSTEMS INC	\$150,829	\$150,829	\$127,947	\$0	84.83%
AMERICAN REPROGRAPHICS CO LLC	\$1,026	\$1,026	\$0	\$0	0.00%
ARROW RESTAURANT EQUIPMENT	\$14,076	\$14,076	\$0	\$0	0.00%
CAROLINA BIOLOGICAL SUPPLY	\$24,213	\$24,213	\$0	\$0	0.00%
DEVELOPMENT GROUP INC	\$16,057	\$16,057	\$16,057	\$16,057	100.00%
FISHER SCIENCE EDUCATION	\$26,187	\$26,187	\$0	\$0	0.00%
FLINN SCIENTIFIC INC	\$12,364	\$12,364	\$0	\$0	0.00%
WW GRAINGER INC	\$2,923	\$2,923	\$110	\$0	3.75%
	\$396,269	\$247,676	\$144,114	\$16,057	36.37%
2.11 Construction Cost Escalation					
UNCOMMITTED	\$0	\$0	\$0	\$0	
	\$0	\$0	\$0	\$0	
3. Program and Construction Management					
3.01 Program Management Fees					
UNCOMMITTED	\$619,663	\$0	\$0	\$0	
CORDOBA CORPORATION	\$0	\$0	\$0	\$0	
CUMMING CONSTRUCTION MGMT INC	\$811,752	\$1,096,673	\$682,873	\$66,351	84.12%
	\$1,431,415	\$1,096,673	\$682,873	\$66,351	47.71%
3.02 Construction Management Fees					
UNCOMMITTED	\$504,373	\$0	\$0	\$0	
CORDOBA CORPORATION	\$1,459,850	\$1,571,242	\$1,415,043	\$85,318	96.93%
	\$1,964,222	\$1,571,242	\$1,415,043	\$85,318	72.04%

4. Construction Support Costs

4.01 Rental

UNCOMMITTED	\$44,408	\$0	\$0	\$0	
	\$44,408	\$0	\$0	\$0	0.00%

4.02 Title, Environmental, Stormwater Management

UNCOMMITTED	\$36,668	\$0	\$0	\$0	
CHICAGO TITLE COMPANY	\$750	\$750	\$750	\$0	100.00%
OUSD COST OF INTEREST DISTRIBUTION	\$1	\$1	\$1	\$0	100.00%
PLACEWORKS INC	\$87,059	\$87,059	\$73,237	\$0	84.12%
STATE WATER RESOURCES CONTROL BOARD (SWRCB)	\$484	\$484	\$484	\$484	100.00%
	\$124,962	\$88,294	\$74,471	\$484	59.60%

4.03 Commissioning

UNCOMMITTED	\$9,722	\$0	\$0	\$0	
P2S ENGINEERING INC	\$31,635	\$31,635	\$25,218	\$0	79.72%
	\$41,357	\$31,635	\$25,218	\$0	60.98%

4.04 Builders Risk Insurance

UNCOMMITTED	\$0	\$0	\$0	\$0	
	\$0	\$0	\$0	\$0	

4.05 DSA Review Fees

UNCOMMITTED	\$38,256	\$0	\$0	\$0	
DIVISION OF STATE ARCHITECT	\$289,250	\$289,250	\$289,250	\$0	100.00%
	\$327,506	\$289,250	\$289,250	\$0	88.32%

4.06 Postage, Printing & Advertising

UNCOMMITTED	\$30,773	\$0	\$0	\$0	
AMERICAN REPROGRAPHICS CO LLC	\$14,006	\$14,006	\$10,816	\$0	77.22%
SOUTHERN CALIFORNIA NEWS GROUP	\$1,768	\$1,768	\$1,768	\$0	100.00%
	\$46,548	\$15,774	\$12,583	\$0	27.03%

4.07 DSA Inspection (IOR)

UNCOMMITTED	\$94,895	\$0	\$0	\$0	
BPI INSPECTION SERVICE	\$273,615	\$273,615	\$217,649	\$25,400	79.55%
	\$368,510	\$273,615	\$217,649	\$25,400	59.06%

4.08 DSA Construction Phase Testing (LOR)

UNCOMMITTED	\$0	\$0	\$0	\$0	
NINYO & MOORE	\$534,755	\$534,755	\$534,755	\$284,593	100.00%
	\$534,755	\$534,755	\$534,755	\$284,593	100.00%

4.09 Relocation

UNCOMMITTED	\$22,780	\$0	\$0	\$0	
ULINE INC	\$1,860	\$1,860	\$0	\$0	0.00%
	\$24,640	\$1,860	\$0	\$0	0.00%

4.10 Labor Compliance

UNCOMMITTED	\$27,622	\$0	\$0	\$0	
	\$27,622	\$0	\$0	\$0	0.00%

4.11 Preliminary Testing (Hazmat, Topo, Geo, etc)

UNCOMMITTED	\$52,289	\$0	\$0	\$0	
CALIFORNIA GEOLOGICAL SURVEY (Geology and Seismology Review)	\$3,600	\$3,600	\$3,600	\$0	100.00%
ENVIRONMENTAL NETWORK CORPORATION	\$3,140	\$3,140	\$3,070	\$0	97.77%
LEIGHTON CONSULTING INC (Geotechnical Engineering)	\$20,000	\$20,000	\$16,549	\$0	82.75%
PSOMAS	\$27,000	\$27,000	\$21,034	\$0	77.90%

RMA GROUP (dba SITESCAN)	\$53,125	\$53,125	\$44,890	\$6,670	84.50%
SPECTRUM FIRE PROTECTION (Fire Hydrant Flow Test)	\$1,000	\$1,000	\$1,000	\$0	100.00%
	\$160,154	\$107,865	\$90,143	\$6,670	56.29%
4.12 Utility Connection Fees (Local Permits)					
UNCOMMITTED	\$152,436	\$0	\$0	\$0	
STATE WATER RESOURCES CONTROL BOARD (SWRCB)	\$484	\$484	\$484	\$0	100.00%
	\$152,920	\$484	\$484	\$0	0.32%
4.13 FF&E (Laboratory Tables and Chairs, other)					
UNCOMMITTED	\$97,493	\$0	\$0	\$0	
CDW GOVERNMENT INC (Parts for IP Camera Systems)	\$59,662	\$65,624	\$0	\$0	0.00%
CULVER-NEWLIN INC	\$12,359	\$12,359	\$12,359	\$0	100.00%
INTER-PACIFIC INC	\$7,325	\$7,325	\$0	\$0	0.00%
SIERRA SCHOOL EQUIPMENT COMPANY	\$485,250	\$485,250	\$0	\$0	0.00%
VWR INTERNATIONAL LLC	\$47,922	\$52,714	\$8,873	\$8,873	18.52%
	\$710,011	\$623,272	\$21,232	\$8,873	2.99%
4.14 Legal Counsel					
UNCOMMITTED	\$55,244	\$0	\$0	\$0	
	\$55,244	\$0	\$0	\$0	0.00%
5. Contingency					
5.01 Construction Contingency					
UNCOMMITTED	\$2,335,665	\$0	\$0	\$0	
	\$2,335,665	\$0	\$0	\$0	0.00%
5.02 Project Contingency					
UNCOMMITTED	\$7,244,477	\$0	\$0	\$0	
	\$7,244,477	\$0	\$0	\$0	0.00%
Total 394-9520 Villa Park HS Science Center (DSA 04-117022)					
	\$38,851,427	\$27,367,705	\$12,210,039	\$924,918	31.43%
394-9520 Villa Park HS Interim Housing (DSA 04-116788)					
1. Design Cost					
1.01 Architect					
UNCOMMITTED	\$0	\$0	\$0	\$0	
LPA INC	\$70,000	\$70,000	\$70,000	\$0	100.00%
	\$70,000	\$70,000	\$70,000	\$0	100.00%
2. Construction Cost					
2.01 Construction					
UNCOMMITTED	\$0	\$0	\$0	\$0	
ANGELES CONTRACTOR, INC	\$1,074,556	\$1,074,556	\$1,074,556	\$0	100.00%
	\$1,074,556	\$1,074,556	\$1,074,556	\$0	100.00%
2.02 OFCI and Other Construction					
UNCOMMITTED	\$0	\$0	\$0	\$0	
ACCO ENGINEERED SYSTEMS INC	\$36,527	\$36,527	\$36,527	\$0	100.00%
	\$36,527	\$36,527	\$36,527	\$0	100.00%
4. Construction Support Costs					
4.01 Rental					
UNCOMMITTED	\$0	\$0	\$0	\$0	

\$444,082	\$444,082	\$376,482	\$0	84.78%
\$444,082	\$444,082	\$376,482	\$0	84.78%

4.05 DSA Review Fees

UNCOMMITTED	\$0	\$0	\$0	\$0	
DIVISION OF STATE ARCHITECT	\$24,163	\$24,163	\$24,163	\$0	100.00%
	\$24,163	\$24,163	\$24,163	\$0	100.00%

4.07 DSA Inspection (IOR)

UNCOMMITTED	\$0	\$0	\$0	\$0	
BPI INSPECTION SERVICE	\$43,265	\$43,265	\$43,265	\$0	100.00%
	\$43,265	\$43,265	\$43,265	\$0	100.00%

4.08 DSA Construction Phase Testing (LOR)

UNCOMMITTED	\$0	\$0	\$0	\$0	
NINYO & MOORE	\$41,908	\$41,908	\$41,908	\$0	100.00%
	\$41,908	\$41,908	\$41,908	\$0	100.00%

4.09 Relocation

UNCOMMITTED	\$0	\$0	\$0	\$0	
Beltmann Group, Inc.	\$4,640	\$4,640	\$4,640	\$0	100.00%
	\$4,640	\$4,640	\$4,640	\$0	100.00%

Total 394-9520 Villa Park HS Interim Housing (DSA 04-116788)	\$1,739,140	\$1,739,140	\$1,671,540	\$0	96.11%
---	--------------------	--------------------	--------------------	------------	---------------

394-9520 Villa Park HS Parking and Drop Off (DSA 04-118521)**1. Design Cost****1.01 Architect**

UNCOMMITTED	\$0	\$0	\$0	\$0	
LPA INC	\$107,305	\$107,305	\$59,506	\$0	55.45%
	\$107,305	\$107,305	\$59,506	\$0	55.45%

2. Construction Cost**2.01 Construction**

UNCOMMITTED	\$0	\$0	\$0	\$0	
ANGELES CONTRACTOR, INC	\$2,750,000	\$2,750,000	\$1,927,800	\$1,617,332	70.10%
	\$2,750,000	\$2,750,000	\$1,927,800	\$1,617,332	70.10%

4. Construction Support Costs**4.05 DSA Review Fees**

UNCOMMITTED	\$5,233	\$0	\$0	\$0	
DIVISION OF STATE ARCHITECT	\$37,450	\$37,450	\$37,450	\$0	100.00%
	\$42,683	\$37,450	\$37,450	\$0	87.74%

4.06 Postage, Printing & Advertising

UNCOMMITTED	\$0	\$0	\$0	\$0	
AMERICAN REPROGRAPHICS CO LLC	\$476	\$476	\$476	\$0	100.00%
	\$476	\$476	\$476	\$0	100.00%

4.07 DSA Inspection (IOR)

UNCOMMITTED	\$0	\$0	\$0	\$0	
BPI INSPECTION SERVICE	\$44,880	\$44,880	\$19,230	\$9,880	42.85%
	\$44,880	\$44,880	\$19,230	\$9,880	42.85%

4.08 DSA Construction Phase Testing (LOR)

UNCOMMITTED	\$0	\$0	\$0	\$0	
-------------	-----	-----	-----	-----	--

NINYO & MOORE	\$45,905	\$45,905	\$44,248	\$44,248	96.39%
	\$45,905	\$45,905	\$44,248	\$44,248	96.39%
Total 394-9520 Villa Park HS Parking and Drop Off (DSA 04-118521)	\$2,991,250	\$2,986,016	\$2,088,710	\$1,671,460	69.83%
394-9520 Villa Park HS Phase II Planning and Design					
1. Design Cost					
1.01 Architect					
UNCOMMITTED	\$0	\$0	\$0	\$0	
LPA INC	\$1,877,000	\$1,877,000	\$407,342	\$331,342	21.70%
	\$1,877,000	\$1,877,000	\$407,342	\$331,342	21.70%
3. Program and Construction Management					
3.01 Program Management Fees					
UNCOMMITTED	\$72,918	\$0	\$0	\$0	
CUMMING CONSTRUCTION MGMT INC	\$58,462	\$58,462	\$7,680	\$7,680	13.14%
	\$131,380	\$58,462	\$7,680	\$7,680	5.85%
3.02 Construction Management Fees					
UNCOMMITTED	\$223,761	\$0	\$0	\$0	
	\$223,761	\$0	\$0	\$0	0.00%
4. Construction Support Costs					
4.06 Postage, Printing & Advertising					
UNCOMMITTED	\$8,000	\$0	\$0	\$0	
	\$8,000	\$0	\$0	\$0	0.00%
4.11 Preliminary Testing (Hazmat, Topo, Geo, etc)					
UNCOMMITTED	\$35,846	\$0	\$0	\$0	
PSOMAS	\$26,550	\$26,550	\$12,500	\$12,500	47.08%
	\$62,396	\$26,550	\$12,500	\$12,500	20.03%
Total 394-9520 Villa Park HS Phase II Planning and Design	\$2,302,537	\$1,962,012	\$427,522	\$351,522	18.57%
394-TBD Villa Park HS Science Center Unallocated Funds F22					
5. Unallocated Bond Funds					
5.04 Unallocated Bond Funds					
UNCOMMITTED	\$1,192,646	\$0	\$0	\$0	
	\$1,192,646	\$0	\$0	\$0	0.00%
Total 394-TBD Villa Park HS Science Center Unallocated Funds F22	\$1,192,646	\$0	\$0	\$0	0.00%
394-9520 Villa Park Unallocated Funds F21					
4. Construction Support Costs					
4.15 Miscellaneous Fees					
UNCOMMITTED	\$0	\$0	\$0	\$0	
OUSD COST OF INTEREST DISTRIBUTION	\$20,426	\$20,426	\$20,426	\$0	100.00%
	\$20,426	\$20,426	\$20,426	\$0	100.00%
5. Program Reserve					
5.03 Interest Earned - Reserve					
UNCOMMITTED	\$0	\$0	\$0	\$0	
	\$0	\$0	\$0	\$0	

Total 394-9520 Villa Park Unallocated Funds F21	\$20,426	\$20,426	\$20,426	\$0	100.00%
---	----------	----------	----------	-----	---------

394-TBD Villa Park Unallocated Funds F22					
--	--	--	--	--	--

5. Unallocated Bond Funds

5.04 Unallocated Bond Funds

UNCOMMITTED	\$25,538,287	\$0	\$0	\$0	
	\$25,538,287	\$0	\$0	\$0	0.00%
Total 394-TBD Villa Park Unallocated Funds F22	\$25,538,287	\$0	\$0	\$0	0.00%

Villa Park High School	\$72,698,662	\$34,138,248	\$16,481,186	\$2,947,900	22.67%
------------------------	--------------	--------------	--------------	-------------	--------

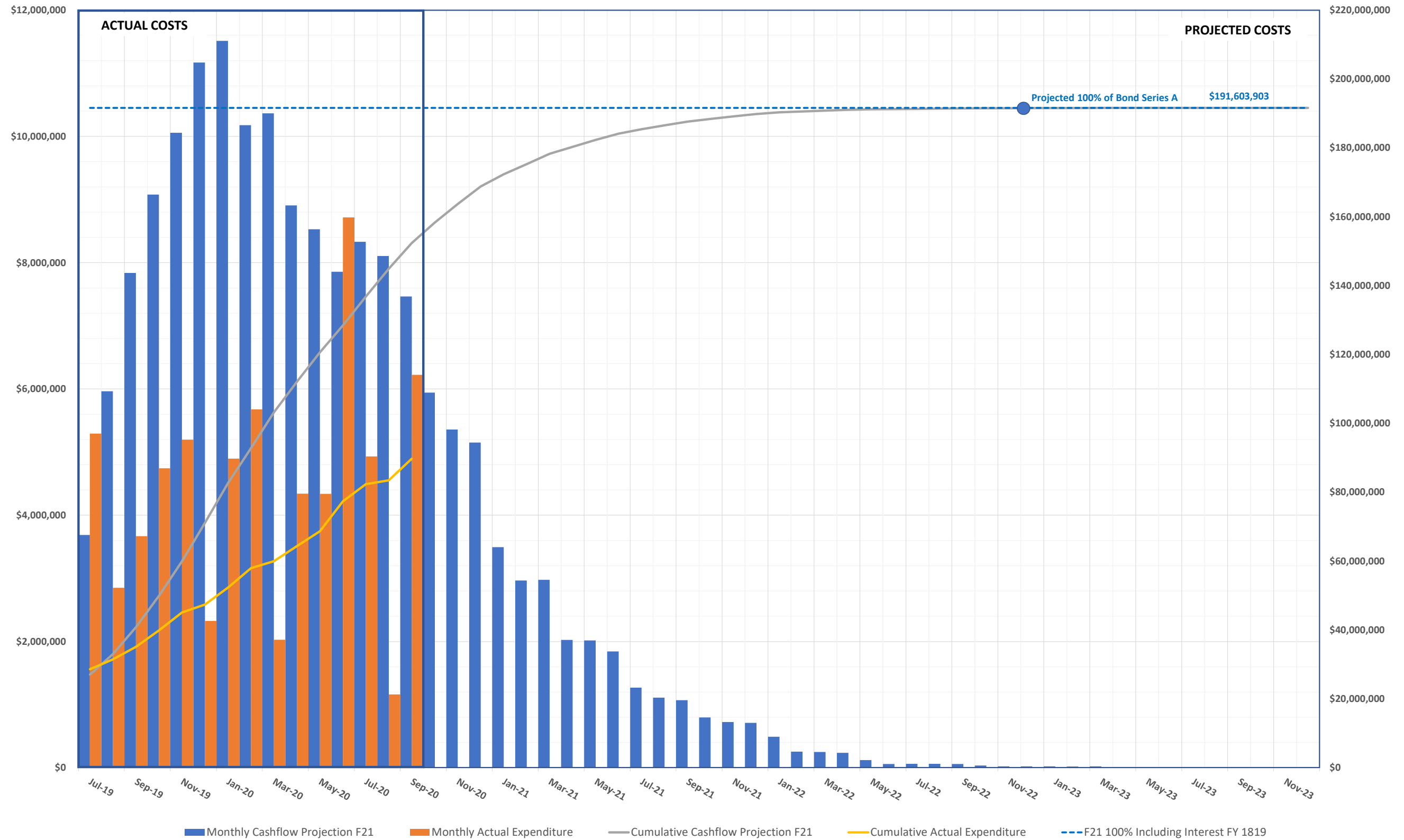


3.2 CASH FLOW PROJECTIONS

MEASURE S BOND PROGRAM - Series A 2018 CASH FLOW PROJECTION (Phase I and II)

Actual Costs thru September 30, 2020

Fund 21 Planned Costs Projected as of June 30, 2019



4.0 PROGRAM SUMMARY SCHEDULE



MEASURE S BOND PROGRAM - PHASE I: SCHEDULE SUMMARY

2016			2017												2018												2019											
4th Quarter 2016			1st Quarter 2017			2nd Quarter 2017			3rd Quarter 2017			4th Quarter 2017			1st Quarter 2018			2nd Quarter 2018			3rd Quarter 2018			4th Quarter 2018			1st Quarter 2019			2nd Quarter 2019								
Oct	Nov	Dec	Jan	Feb	Mar	Apr	May	Jun	Jul	Aug	Sep	Oct	Nov	Dec	Jan	Feb	Mar	Apr	May	Jun	Jul	Aug	Sep	Oct	Nov	Dec	Jan	Feb	Mar	Apr	May	Jun						
			BOND SALE SERIES A - \$188M																																			
			ORANGE HS - Site Infrastructure, Move Relocatable Buildings, Bus Drop-Off, Restroom Renovation & Satellite Kitchen - COMPLETED																																			
			PROGRAM PHASE			DESIGN PHASE						DSA REVIEW & APPROVAL						BID & AWARD			INFRASTRUCTURE						SATELLITE KITCHEN CONSTRUCTION						FF&E/CLOSEOUT					
			ORANGE HS - STEM Building, Medically Fragile Classrooms, New Fire Lanes																																			
			PROGRAM PHASE			DESIGN PHASE												DSA REVIEW & APPROVAL						BID & AWARD						CONSTRUCTION								
			VILLA PARK HS - STEM Building, Medically Fragile Classrooms, Interim Housing, Site Infrastructure, Stormwater Bioretention Basin																																			
			PROGRAM PHASE					DESIGN PHASE															DSA REVIEW & APPROVAL						BID & AWARD					CONSTRUCTION				
			EL MODENA HS - STEM Building, Medically Fragile Classrooms, Site Infrastructure, New Fire Lanes, Parking Lot Lighting																																			
			PROGRAM PHASE				DESIGN PHASE																DSA REVIEW & APPROVAL						BID & AWARD					CONSTRUCTION				
CANYON HS - STEM Building, Site Infrastructure, Temporary Kitchen, New Classrooms, Administration, MPR Entry, Food Service, Drop-Off Circulation,																																						
PROGRAM PHASE					DESIGN PHASE															DSA REVIEW & APPROVAL						BID & AWARD												

Villa Park HS Schematic Design & Budget Board Approved 6/8/17

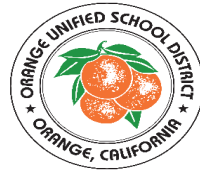
Canyon HS Schematic Design & Budget Board Approved 5/25/17

El Modena HS Schematic Design & Budget Board Approved 5/11/17

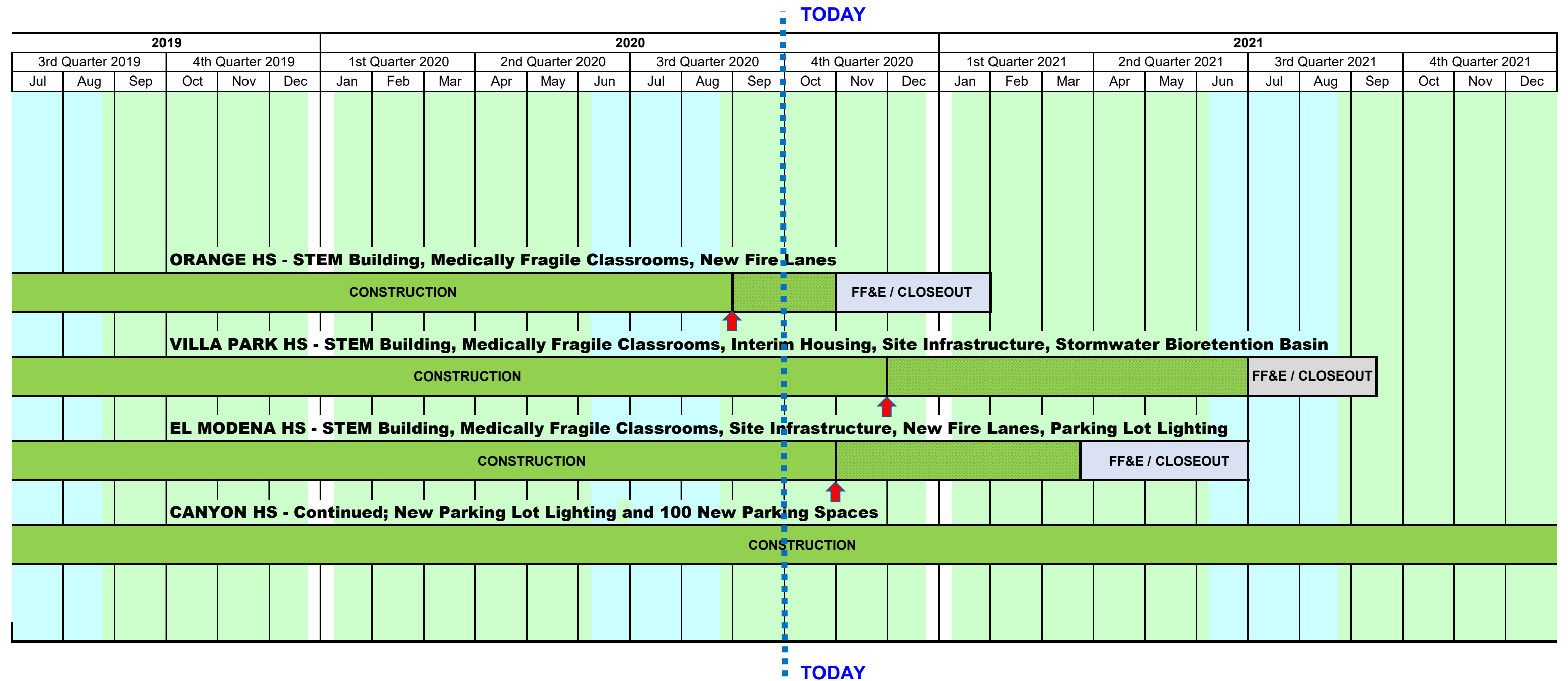
Orange HS Schematic Design & Budget Board Approved 4/13/17

Program Manager Starts Work 1/17/17

- Bond Measure S Passes by 62% on 11/8/16



MEASURE S BOND PROGRAM - PHASE I: SCHEDULE SUMMARY



SUMMER BREAK



There is a date under negotiation (see monthly report) that may extend this substantial completion date (the striped section is the extension).



MEASURE S BOND PROGRAM - PHASE II: SCHEDULE SUMMARY

TODAY

#				2019												2020												2020		
2018	3rd Quarter 2018			4th Quarter 2018			1st Quarter 2019			2nd Quarter 2019			3rd Quarter 2019			4th Quarter 2019			1st Quarter 2020			2nd Quarter 2020			3rd Quarter 2020			4th Quarter 2020		
Jun	Jul	Aug	Sep	Oct	Nov	Dec	Jan	Feb	Mar	Apr	May	Jun	Jul	Aug	Sep	Oct	Nov	Dec	Jan	Feb	Mar	Apr	May	Jun	Jul	Aug	Sep	Oct	Nov	Dec

TODAY



SUMMER BREAK

- Conceptual Design Board Approved 5/9/19 for Canyon HS
- Conceptual Design Board Approved 12/13/18
- Phase II Design & Budget Board Approved 7/25/19
- Orange HS
- El Modena HS
- Villa Park HS
- Orange HS
- El Modena HS
- Villa Park HS
- Canyon HS



 — SUMMER BREAK

 — **Phase II Design Document & Construction Estimate Board Approval**

Orange HS - October 15, 2020 Board Meeting

El Modena HS

Villa Park HS - August 13, 2020 Board Meeting

Canyon HS

Board of Education

John Ortega, President
Kathryn A. Moffat, Vice-President
Kris Erickson, Clerk
Alexia Deligianni-Brydges, Ed. D
Rick Ledesma
Andrea Yamasaki
Vacant

Gunn Marie Hansen, Ph.D.
Superintendent

David A. Rivera
**Assistant Superintendent/CBO
Business Services**

Scott Harvey
**Senior Executive Director
Administrative Services**



Facilities & Planning Department
Measure S Bond Program
726 W. Collins Avenue
Orange, CA 92867
T: (714) 628-4500