



# Canyon High School

ORANGE UNIFIED SCHOOL DISTRICT  
BOARD OF EDUCATION MEETING

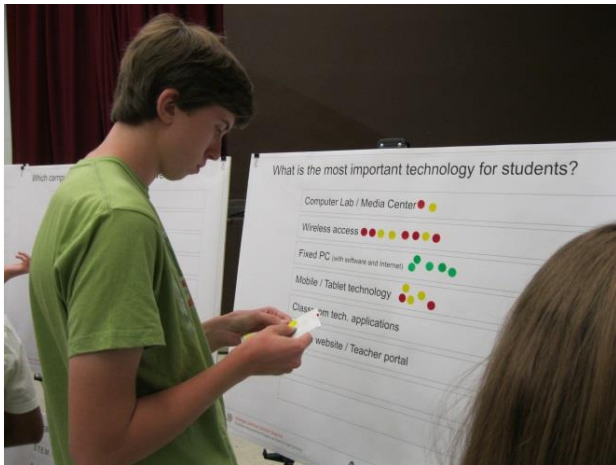
gkkworks | CANNONDESIGN

June 6, 2019



# Shared Governance Approach

## Visioning Sessions 2014-2016



**Student Group**

**Community Group**

**Core Group**

# Campus and Community

## Goals and Priorities- MASTER PLAN



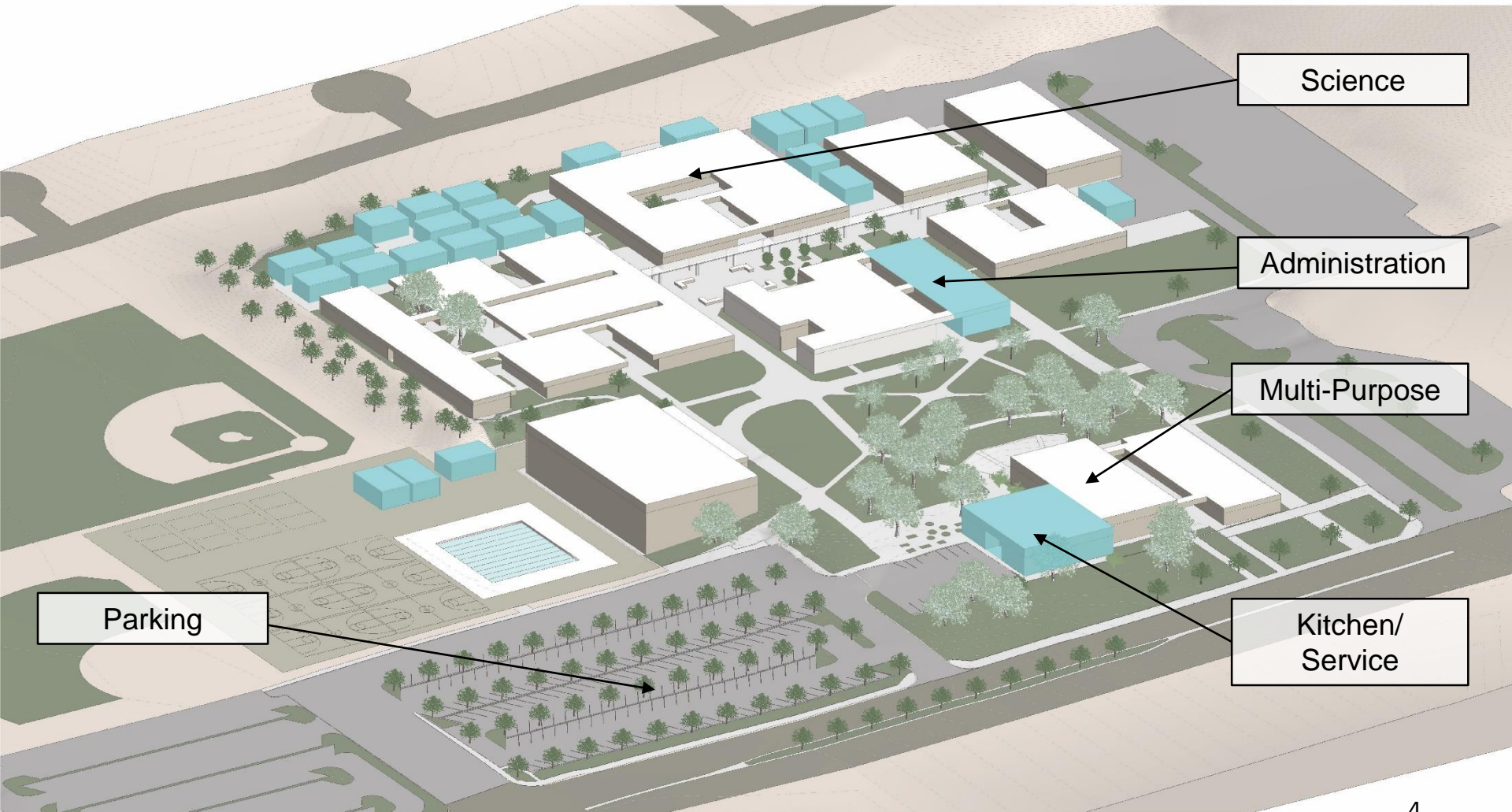
- Create New 21<sup>st</sup> Century Learning Environments for STEM Curriculum
- Replace Classrooms in Portables with new facilities
- Improve Safety and Security (campus access & supervision)
- Increase Parking Quantity
- Improve Drop-off and Site Circulation
- Improve Curb Appeal





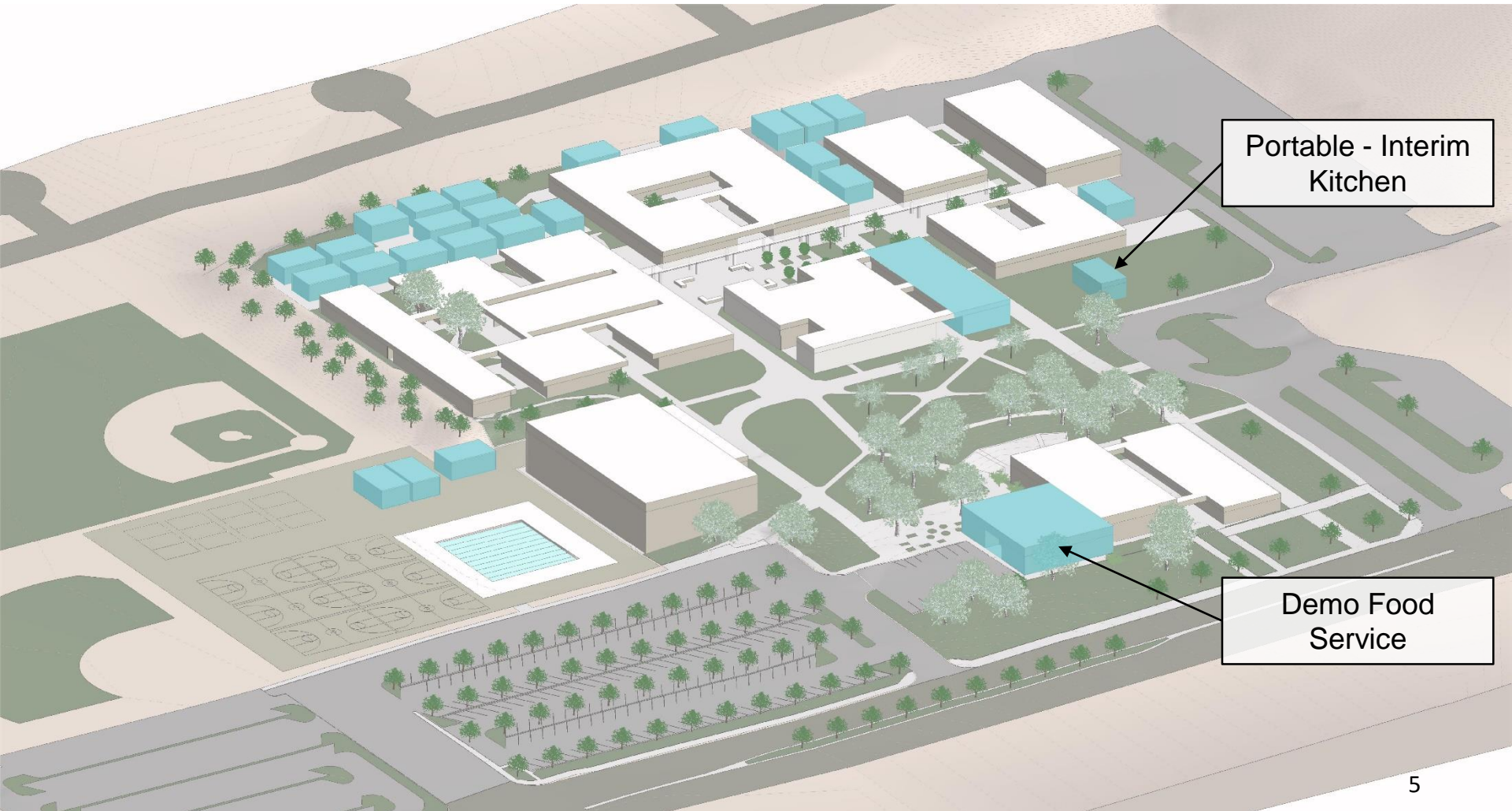
# Canyon High School

## Existing



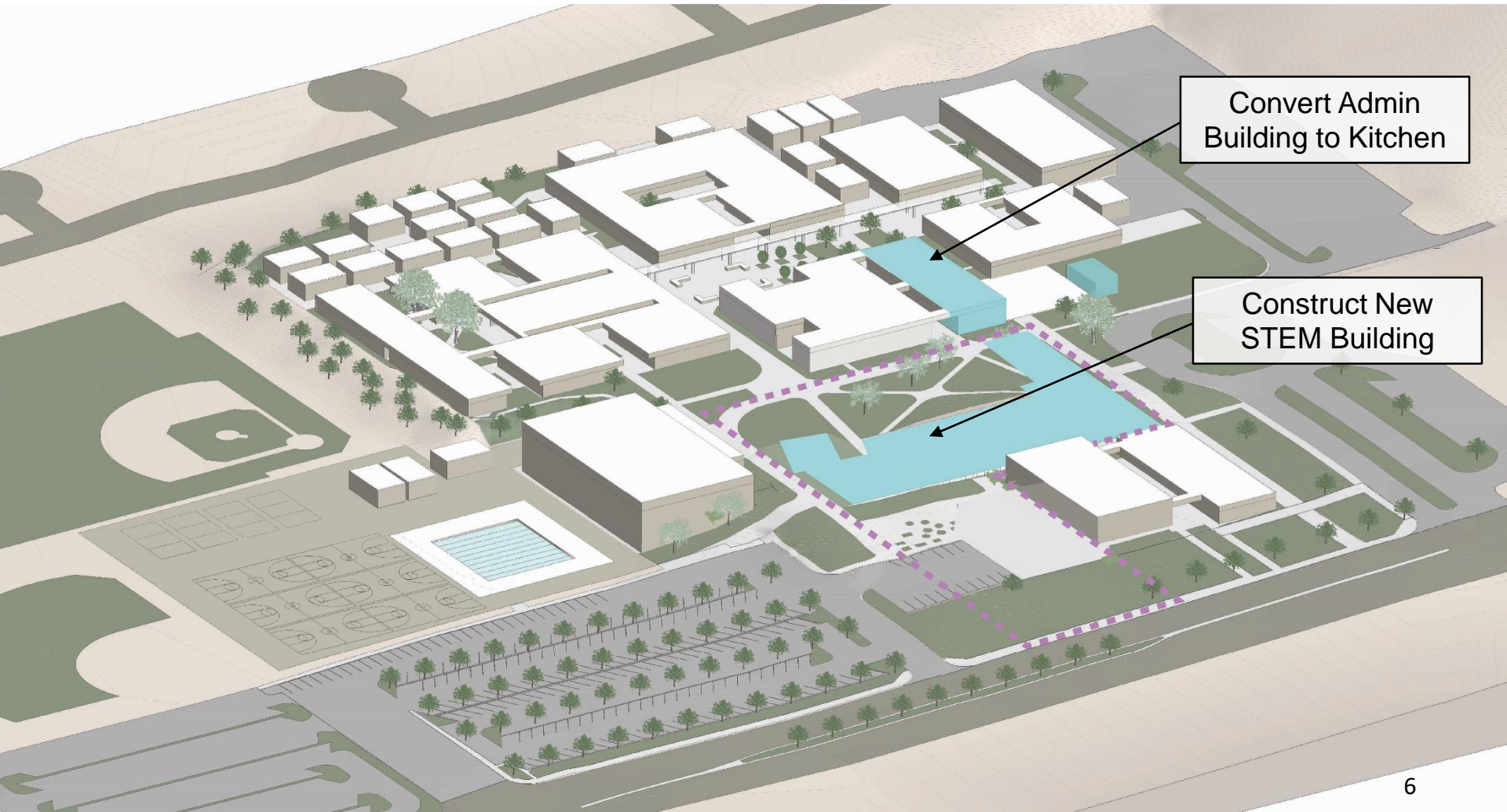
# Canyon High School

## Make Ready – Construction Sequence



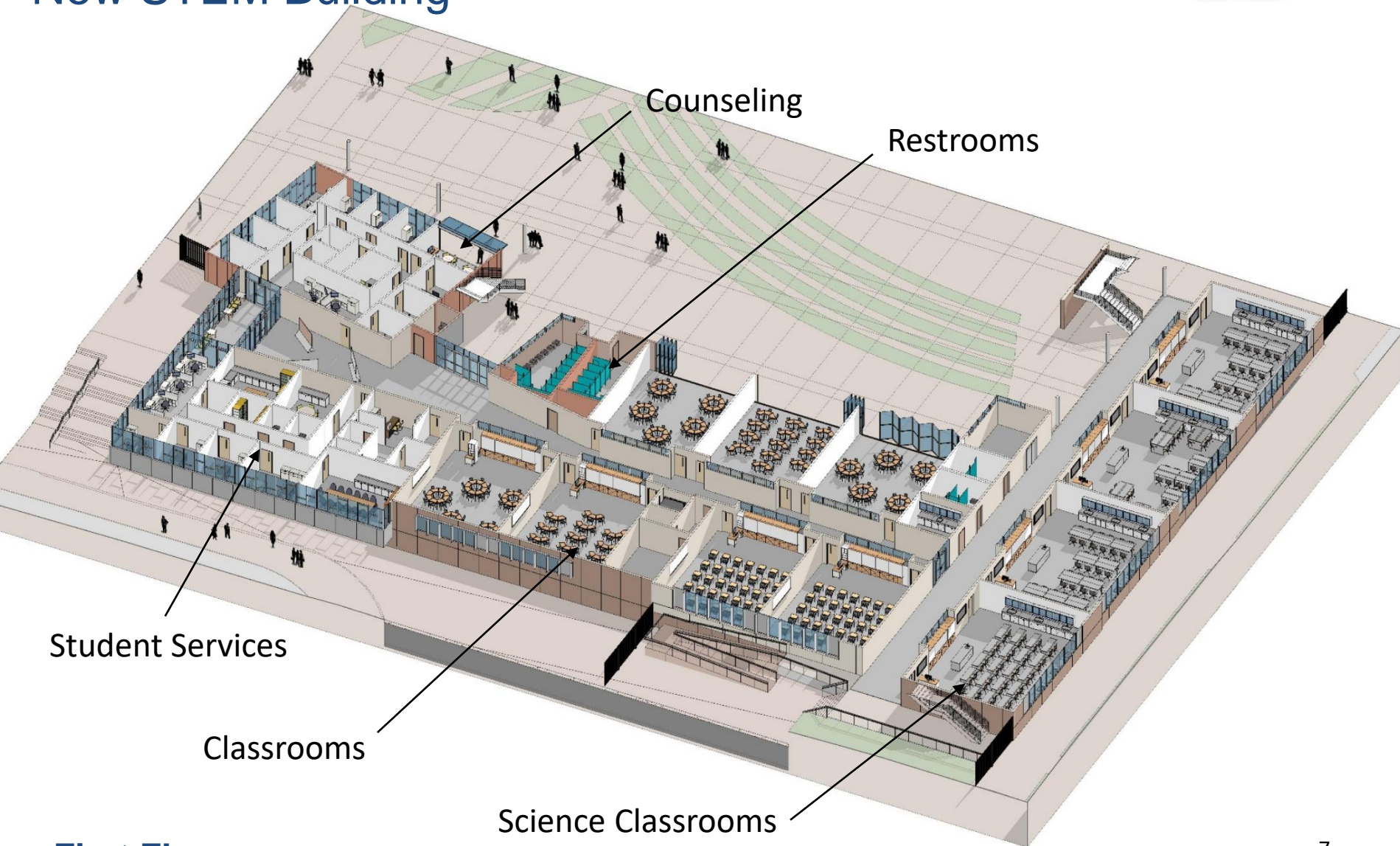


# Canyon High School Construction Sequence



# Canyon High School

## New STEM Building



Student Services

Classrooms

Science Classrooms

Counseling

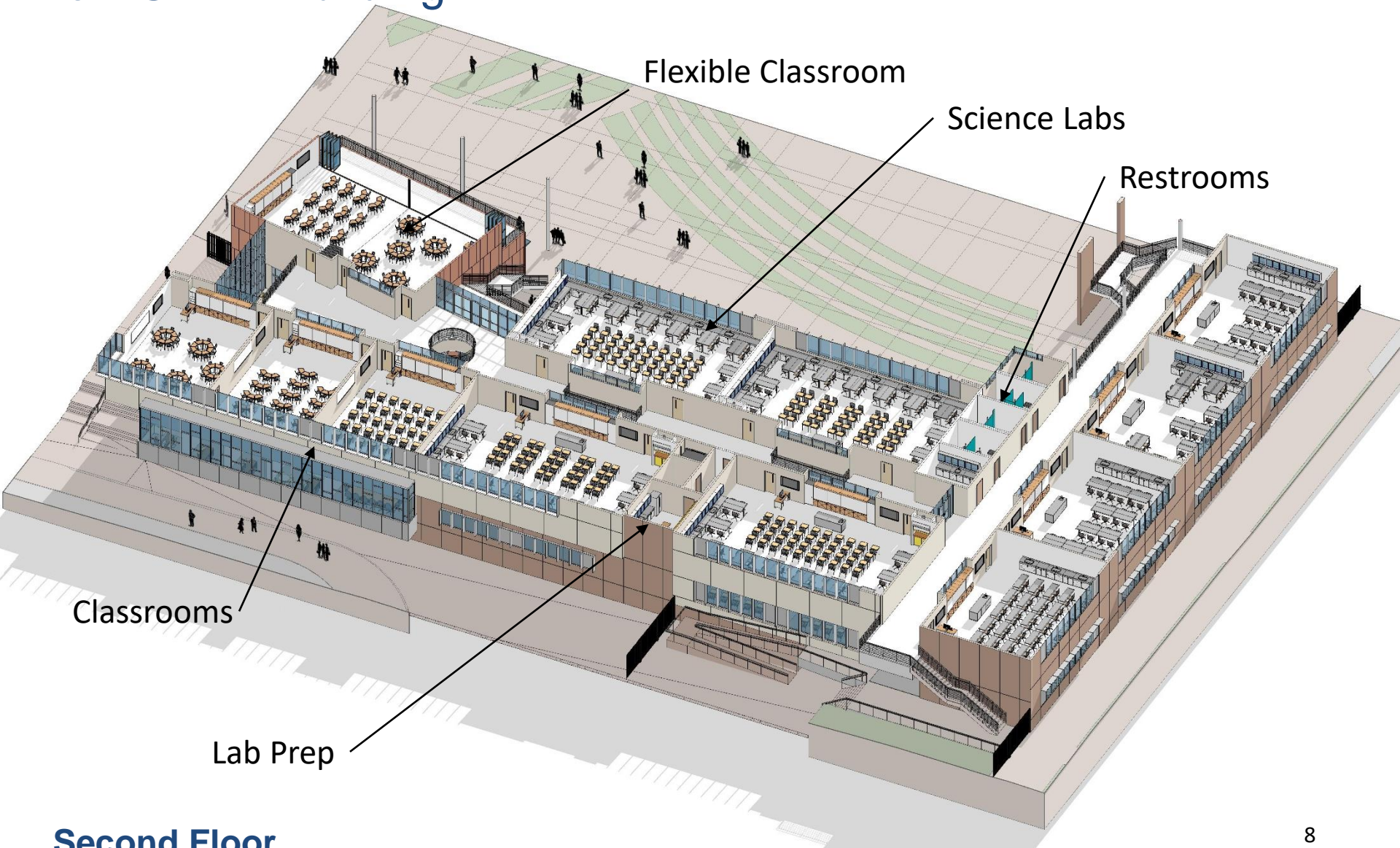
Restrooms

**First Floor**



# Canyon High School

## New STEM Building



**Second Floor**



# Canyon High School

## New STEM Building





# Canyon High School

## New STEM Building

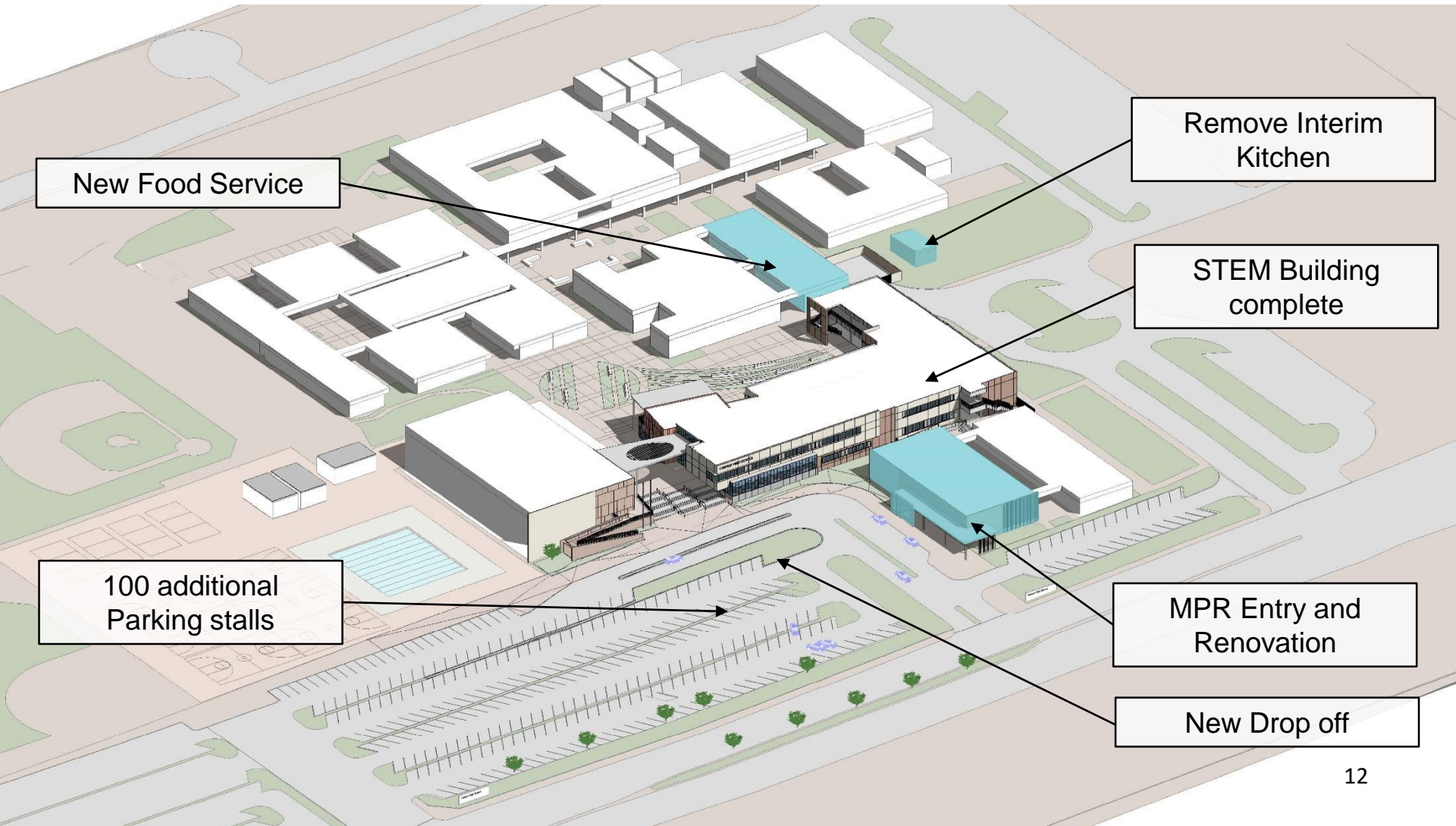




# Canyon High Cafe



# Canyon High School Construction Sequence





# Canyon High School

## Anticipated Schedule



### Portable Kitchen

- Start Construction June 2019
- Occupy September 2019

### STEM Building

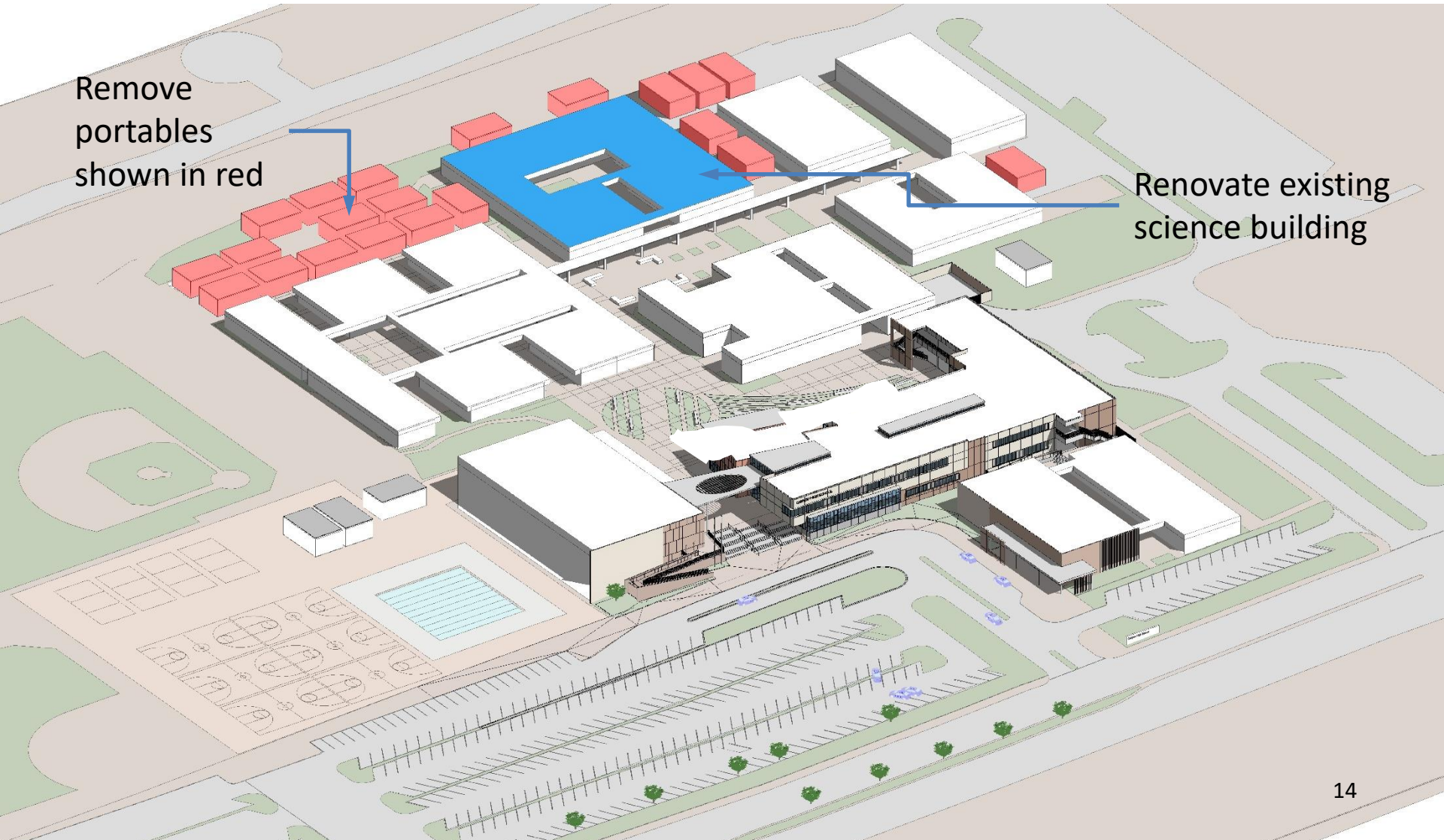
- Start Construction June 2019
- Occupy April 2021

### Convert Admin to Kitchen

- Start Construction April 2021
- Occupy September 2021

# Canyon High School

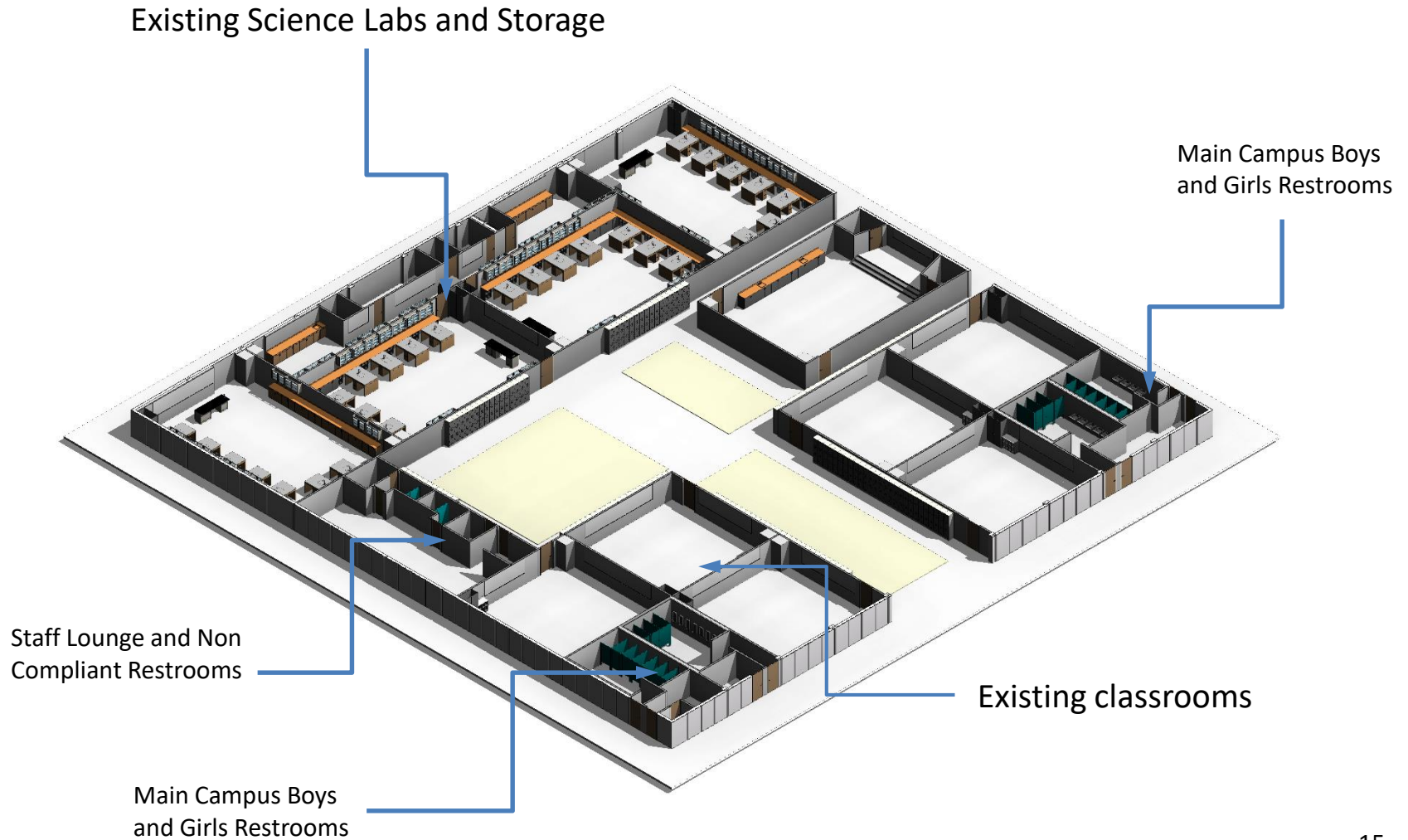
## Phase 2 Science Building Modernization





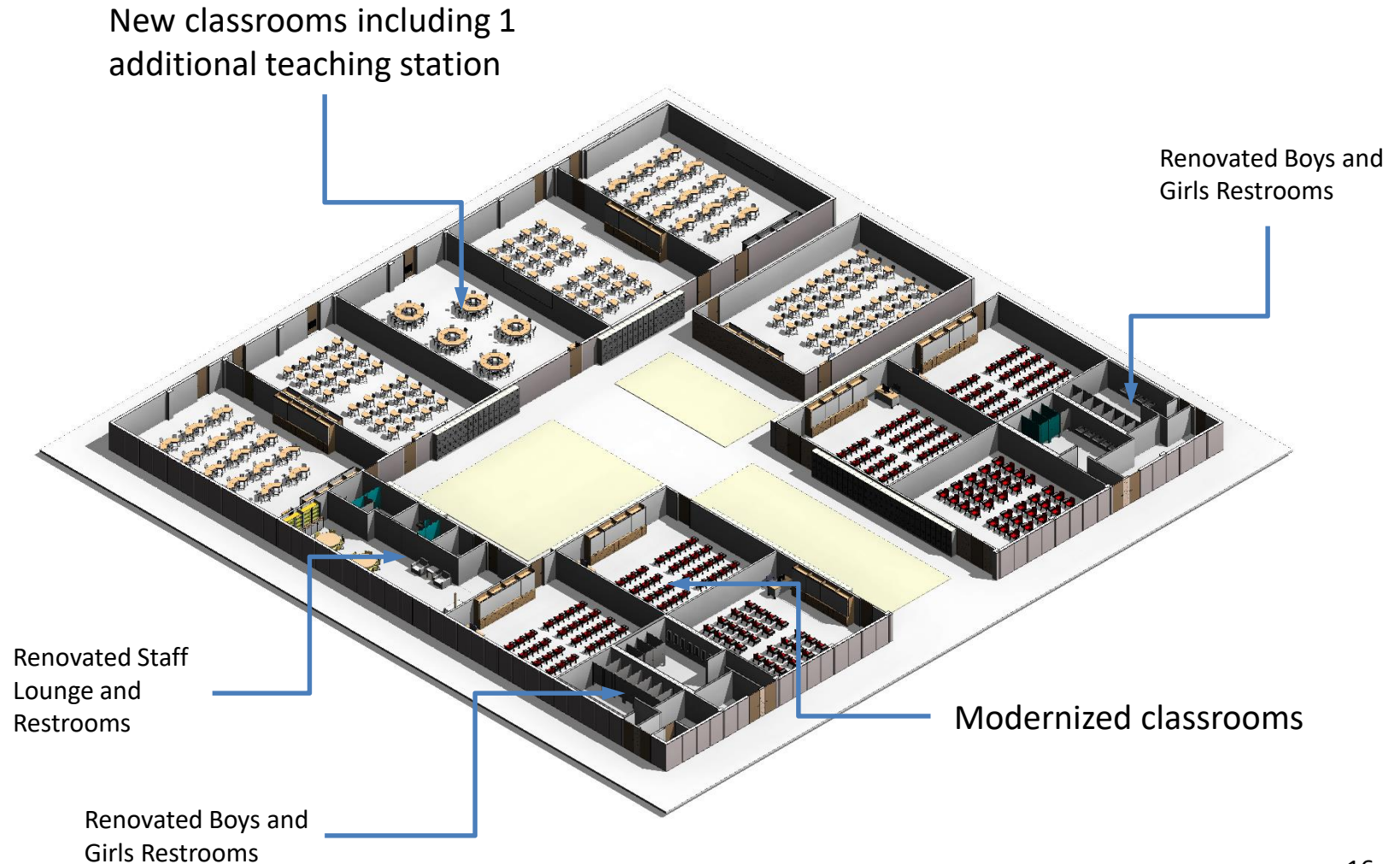
# Canyon High School

## Existing Science Building



# Canyon High School

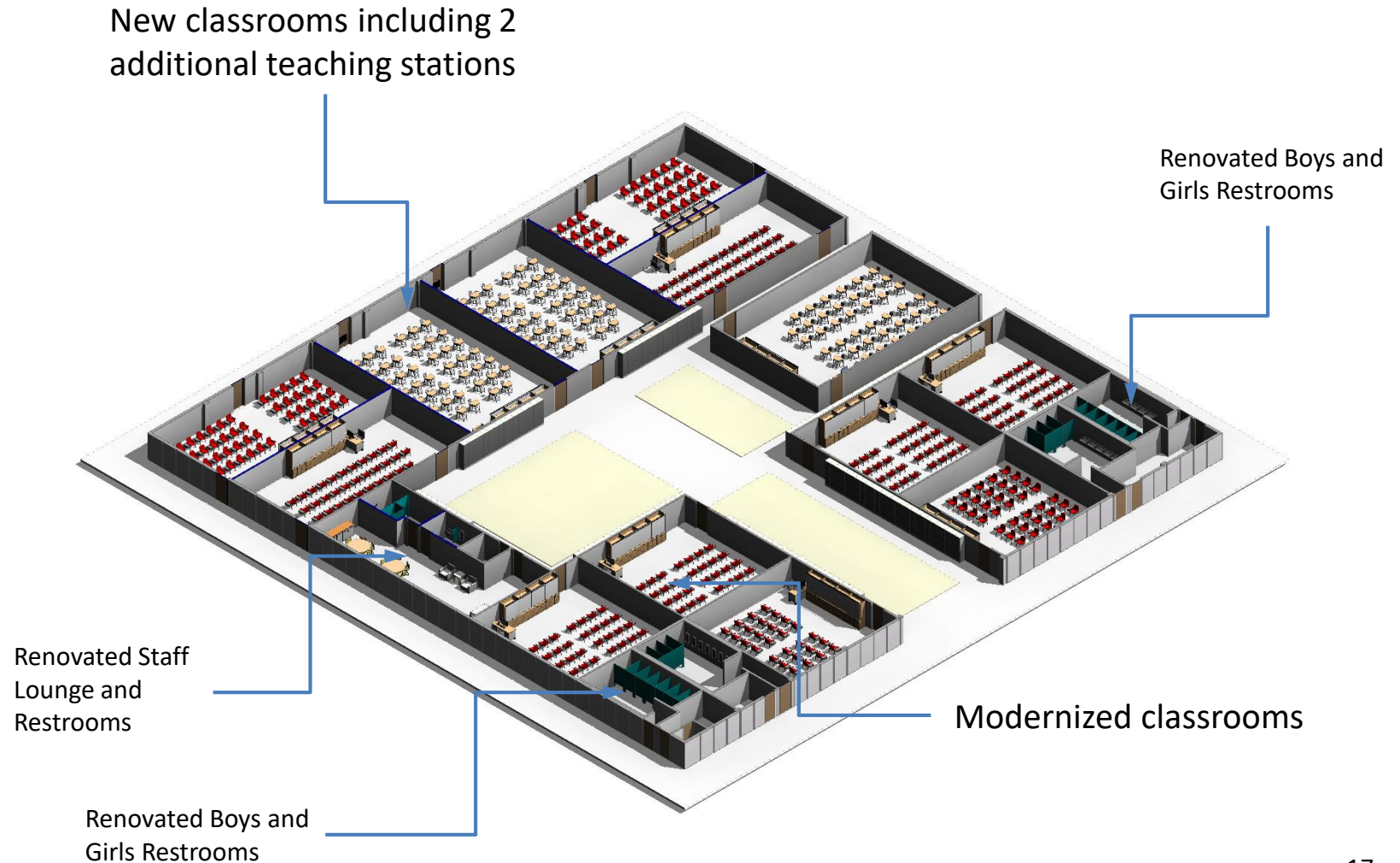
## Science Building Renovation option 1





# Canyon High School

## Science Building Renovation option 2



# Canyon High School

## Phase 2 User Group Meetings



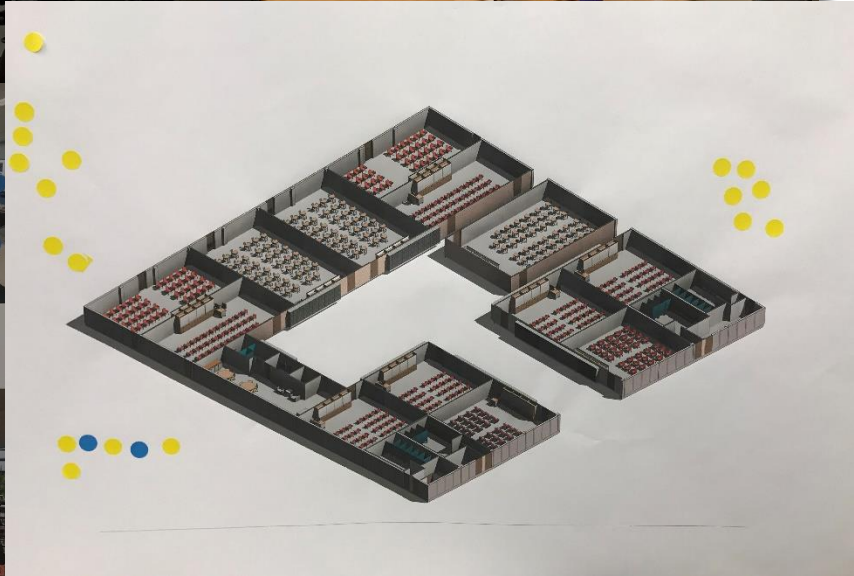
EXTERIOR ENVIRONMENT

CLASSROOM TECHNOLOGY



NATURAL LIGHT

FLEXIBLE FURNITURE



## Voting Results



# Canyon High School

## Teaching station overview



### Existing Teaching Stations

75 (21 portable and 54 permanent)

### Stem Addition

24 new

### Phase 2 Remodel

11 existing + 1 or 2 new

**All Portable Teaching Stations Removed**

**21 in All**

**Total Teaching Stations**

**80**

