



# ORANGE UNIFIED SCHOOL DISTRICT

## Measure S Bond Program

### February 2020 Monthly Progress Report



**PERIOD COVERED:**

February 1-29, 2020

**FISCAL YEAR**

FY 2019-2020

**PROGRESS REPORT NO.**

PR-032-1920-032

**PREPARED BY:**

**CUMMING**  
Building Value Through Expertise



## TABLE OF CONTENTS

### **1.0 Executive Summary**

- 1.1 Program Summary
- 1.2 Program Highlights/Key Milestones
- 1.3 Look Ahead (next 90 days)

### **2.0 Project Status Report**

- Canyon HS – Science Center
- El Modena HS – Science Center
- Orange HS – Utility Infrastructure (Increment # 1)
- Orange HS – Science Center (Increment # 2)
- Villa Park HS – Interim Housing & Science Center

### **3.0 Financial Report**

- 3.1 Project Cost Estimate
  - Budget vs Actuals with Vendor details per High School
- 3.2 Cash Flow Projections

### **4.0 Program Schedule Summary**

- 4.1 Phase I Schedule Summary
- 4.2 Phase II Schedule Summary



## 1.0 EXECUTIVE SUMMARY

### 1.1 Program Summary

#### **Division of State Architects (DSA) approval to establish design criteria completed as follows:**

- (Completed) October 24, 2019 - Villa Park HS New Parking and Drop Off (04-118521).
- (Completed) June 25, 2019 - Orange HS Custom Tensile Fabric Shade Structures (04-118351)
- (Completed) May 2, 2019 - Canyon HS Interim Modular Kitchen (04-118418)
- (Completed) January 31, 2019 - Canyon HS Science Center (04-117300)
- (Completed) November 6, 2018 - El Modena HS Science Center (04-117098)
- (Completed) August 16, 2018 - Villa Park HS Science Center (04-117022)
- (Completed) July 12, 2018 - Orange HS Science Center (Increment # 2) (04-116859)
- (Completed) April 10, 2018 - Orange HS Increment # 1 (Satellite Kitchen) (04-116673.2)
- (Completed) March 1, 2018 - Orange HS Increment #1 (Infrastructure Upgrades, Move Relocatable Buildings, Bus Drop-Off, Restroom Renovation Project) (04-116673.1)
- (Completed) February 7, 2018 - Villa Park HS Interim Housing (DSA Application #04-116788)

#### **Construction started / completed, as follows:**

- (Construction Start - June 15, 2018 / [completed June 28, 2019](#) – Orange HS Site Infrastructure (Increment #1)
- (Construction Start) June 12, 2019 – Canyon HS Science Center
- (Construction Start) April 2, 2019 – El Modena HS Science Center
- (Construction Start) February 18, 2019 – Orange HS Science Center (Increment #2)
- (Construction Start) January 7, 2019 – Villa Park HS (Interim Housing and Science Center)

### 1.2 Program Highlights/Key Milestones

#### **California Environmental Quality Act (CEQA) Compliance Achieved (as required by law):**

- Villa Park HS – Notice of Exemption (Board approved on 9/20/18).
- Canyon HS – Notice of Exemption (Board approved on 7/26/18).
- Orange HS – Notice of Exemption (Board approved on 3/8/18).
- El Modena HS – Notice of Exemption (Board approved on 3/8/18).

#### **Phase II Measure S Bond Project Development Update:**

- As of 02/28/20 the schematic design meetings are continuing to be being held with the Architectural teams and school staff, based on progress.
  - The architectural contracts for each high school have completed review with Architects and are being finalized and executed.



---

### **Project Achievements:**

- As of 02/27/20, submitted the final DSA -168 and revised fees for the substantial completion of the Custom Tensile Fabric Shade Structure (04-118351) at Orange HS.
- On 02/26/2020, DSA design application approval was received for the El Modena HS Science Center Quad Design (04-119124).
- As of 02/26/20, the DSA 168 (Statement of Final Actual project costs) for the A#04-116788 at Villa Park HS Interim Housing, on the Interim Housing project close out of the nine portable classrooms and one portable restroom, was submitted along with the final cost.
- On 02/20/20, there was a “Topping-Out Steel” ceremony held at the Villa Park HS new Science Center building site with the OUSD Board of Education members present. The Board members signed the top steel beam being set on the new Villa Park HS Science Building by Angeles Contractors. The full project team was in attendance.
- As of 02/03/20, a Notice of Partial Occupancy was issued to Swinerton Construction for the District to accept the Interim Modular Kitchen (04-118418) for school use at Canyon HS.
- As of 02/24/20, processing payment application # 12 (January), reflecting 44.7% paid overall completion, reflecting 236 days elapsed.
- As of 02/25/20, processing payment application # 9 (January) reflecting 27.7% paid overall completion, reflecting 130 days elapsed.
- As of 02/21/20, processing payment application # 8 (January) reflecting 19% paid overall completion, reflecting 171 days elapsed.
- As of 01/24/20 (no payment in February), at Villa Park HS Science Center project, processed payment application # 10 (December) reflecting 23% paid overall completion, reflecting 159 days elapsed.

### **1.3 Look Ahead (next 90 days)**

#### **Board of Education Agenda**

##### **March 12<sup>th</sup>-**

Recommend that the Board approved contract Change Order # 2 in the amount of: **\$25,294.41**, at Orange HS Science Center project for Pinner Construction Inc. (PINNER). This change order is comprised of the following proposed change order's (PCO): 44, 50, and 53, reflecting; **0.1%** of the 10% (\$2,610,900) change order contingency.

- The total change in contract being recommended for approval is: **\$102,577.45**
- Increases the Total contract price; **\$26,211,577.45**



- The total change order percentage to date reflects; **0.4%**, which is within the 10% change order contingency for this project.

### **Program Wide**

- Orange HS Science Center – Continue with the setting of steel for the decks, routing utility lines and laying out HVAC ductwork on the new science center building.
- Orange HS Science Center – Continue with the schematic design on the approved Phase II scope of work.
- Orange HS Science Center – Finalize the approved selected vendor for the Furniture, Fixture and Equipment (FF & E) list to be used for this new science center.
- El Modena HS Science Center – Continue the site excavation and trenching continue within the new science center building footprint, grade beams, columns and steel construction..
- El Modena HS Science Center – Continue with the schematic design on the approved Phase II scope of work.
- El Modena HS Science Center – Submission of the Quad design application (04-119124) to DSA for design review and approval.
- El Modena HS Science Center – Finalize the approved selected vendor for the Furniture, Fixture and Equipment (FF & E) list to be used for this new science center.
- Villa Park HS Interim Housing & Science Center – Continue with the schematic design on the approved Phase II scope of work.
- Villa Park HS Interim Housing & Science Center – Continue the excavation, footings, foundations and steel erection construction of the new science center.
- Villa Park HS Interim Housing & Science Center – Proceed with the work under the approved allowance to add the new parking and drop off zone project 04-118521.
- Villa Park HS Interim Housing & Science Center – Finalize the approved selected vendor for the Furniture, Fixture and Equipment (FF & E) list to be used for this new science center.
- Canyon HS Science Center – Continue with the schematic design on the approved Phase II scope of work.
- Canyon HS Science Center – Continue with the beam footing, foundation work, site excavation and trenching continue within the new science center building footprint.



## 2.0 PROJECT STATUS REPORT



Canyon High School  
New STEM Building

CANYON HIGH SCHOOL  
New STEM Building



EL MODENA SCIENCE CENTER  
03.18.2017

Overall View

HED  
12



Orange High School Science Center



AT VILLA PARK HIGH SCHOOL

LPA  
12





# CANYON HIGH SCHOOL

HOME OF THE COMANCHES



## CANYON HS SCIENCE CENTER

- ✓ 12 Laboratory Rooms
- ✓ 12 General Classrooms
- ✓ Student Services
- ✓ New Food Services

- ✓ New Multi-Purpose Room Entry
- ✓ Parking Lot Improvements
- ✓ Infrastructure Upgrade and Improvements
- ✓ Landscape Improvements

### Project Update ([Construction](#)):

- As of 02/28/20, beam footing, foundation work, site excavation and trenching continue within the new science center building footprint.
- As of 02/03/20, a Notice of Partial Occupancy was issued to Swinerton Construction for the District to accept the Interim Modular Kitchen (04-118418) for school use at Canyon HS.
- As of 02/05/20, to keep construction moving, the following construction directive(s) (CD) were issued;
  - CD # 21 for a not-to-exceed (NTE) price of \$32,569 to install new water line to replace the ACM line removed. (part of Allowance category # 02)
  - CD # 20 for a not-to-exceed (NTE) price of \$26,225 to abate the ACM water line per RFI 105 (part of Allowance category # 02).
  - CD # 19 for a not-to-exceed (NTE) price of \$225,000 to reduce the transformer feeders from ten to six conduit feeders.
  - CD # 18 for a not-to-exceed (NTE) price of \$21,353 to provide labor and material to construct a 100-foot barrier in MPR/Kitchen (part of Allowance category # 03).
- As of 02/21/20, processing payment application # 8 (January) reflecting **19%** paid overall completion, reflecting **171 days** elapsed.

[See Construction Photo's below:](#)



Left to right: Utility yard site prep, new conduit runs to existing equipment, existing kitchen preparation for abatement activities, temporary sidewalk pathway, utility yard concrete pads, continued site excavation.



## EL MODENA HS SCIENCE CENTER

- ✓ 12 Laboratory Rooms
- ✓ 1 General Classrooms
- ✓ 2 Medically Fragile Classrooms

- ✓ Relocation of Campus MDF
- ✓ Technology & Utility Upgrade
- ✓ Landscape Improvements

### Project Update (Construction):

- As of 02/28/20, pouring slab on grade, setting steel for the decks, grade beams, columns, footings and steel construction erection.
- On 02/26/2020, DSA design application approval was received for the El Modena HS Science Center Quad Design (04-119124).
- As of 02/06/20, to keep construction moving, the following construction directive (CD) was issued.
  - CD # 17 for a not-to-exceed (NTE) price of \$1,803 to install temp power for the baseball scoreboard.
- As of 02/25/20, processing payment application # 9 (January) reflecting 27.7% paid overall completion, reflecting 130 days elapsed.

See Construction Photo's below:



Left to right: Steel being placed and set, vertical mason block wall for utility yard, steel decking being set, underground piping verticals prepped, outfield fence for baseball field, steel being delivered..





# Orange High School

"ONCE A PANTHER, ALWAYS A PANTHER"



## ORANGE HS SCIENCE CENTER

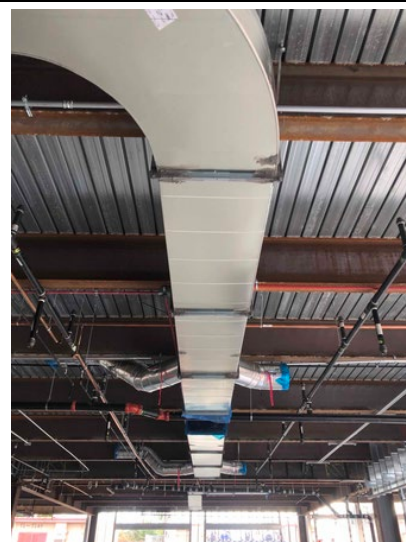
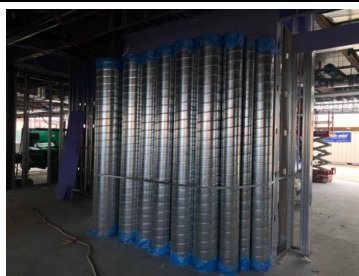
- ✓ 12 Laboratory Rooms
- ✓ 1 General Classrooms

- ✓ New Panther Pavilion Plaza
- ✓ 2 Medically Fragile Classrooms

### Project Update Increment # 2 – Science Center ([Construction](#)):

- As of 02/28/20, Pinner is setting steel for the decks, completing slab on grade work, routing utility lines and laying out HVAC ductwork and setting HVAC units on the new science center building.
- As of 02/28/20 the time impact and recovery schedule analysis submission from Pinner is proceeding with the final review of outstanding change orders and allowances so the revised schedule can be established.
  - Balfour Beatty is continuing to work with Pinner on negotiating the outstanding proposed change orders and allowances (approximately 95% completed).
- As of 02/27/20, submitted the final DSA -168 and revised fees for the substantial completion of the Custom Tensile Fabric Shade Structure (04-118351) at Orange HS.
  - Reviewing the installation of the fabric for maintenance purposes.
- As of 02/24/20, processing payment application # 12 (January), reflecting [44.7%](#) paid overall completion, reflecting [236 days elapsed](#).

[See Construction Photo's below:](#)



Left to right: Interior wall framing and vertical piping, round duct work prep for install, roof top penetrations, acoustic panels, interior duct work being set.



# VILLA PARK HIGH SCHOOL

## SCHOOL OF EXCELLENCE

### VILLA PARK HS SCIENCE CENTER

- ✓ 12 Laboratory Rooms
- ✓ 2 General Classrooms
- ✓ 2 Medically Fragile Classrooms

- ✓ Demolish existing building 300
- ✓ Install 10 New Portable Buildings

#### Project Update ([Construction](#)):

- As of 02/28/20, Angeles is continuing with steel erection with beam footing and foundation work on the new science center building.
- On 02/20/20, there was a “Topping-Out Steel” ceremony held with the OUSD Board of Education members present (prior to the Board meeting held at the OUSD Board room that evening). The Board members signed the top steel beam being set on the Science Building by Angeles Contractors. The full project team was in attendance.
- As of 02/26/20, the DSA 168 (Statement of Final Actual project costs) for the A#04-116788 for Villa Park HS Interim Housing, on the Interim Housing project close out of the nine portable classrooms and one portable restroom, was submitted along with the final cost.
- As of 02/27/20, to keep construction moving, the following construction directive (CD) was issued;
  - CD # 31Rev1 for a not-to-exceed (NTE) price of \$2,400,000 to add the balance of improvements to the new drop off zone improvements (part of Allowance category # 01)
  - CD # 30 for a not-to-exceed (NTE) price of \$35,000 to add four new video detection cameras and one controller to the new drop off zone (part of Allowance category # 01)
- As of 01/24/20, processing payment application # 10 (December) reflecting [23%](#) paid overall completion, reflecting [159 days elapsed](#).

[See Construction Photo's below:](#)



Left to right: Column foundations protection with rebar setting prep for concrete pour, elevator shaft set for steel, concrete pumping onto slab.



## 3.0 FINANCIAL REPORT

### 3.1 Project Cost Estimate SUMMARY

#### Measure S Bond Program

#### Financial Report for February 2020

QSS Data thru 2/29/2020

	Budget	Contracted to Date	Expended to Date	Quarterly Expense Jan '20 - Mar '20	% Expended
<b>PROGRAM</b>					
Phase 1 - HS Science Center	\$207,845,399	\$151,697,237	\$57,531,823	\$10,513,689	27.68%
Phase 2	\$83,758,504	\$1,301,718	\$586,856	\$0	0.70%
<b>TOTAL</b>	<b>\$291,603,903</b>	<b>\$152,998,956</b>	<b>\$58,118,679</b>	<b>\$10,513,689</b>	<b>19.93%</b>
<b>Canyon High School</b>					
Phase 1 - HS Science Center	\$69,500,000	\$48,364,877	\$13,107,866	\$3,375,836	18.86%
Phase 2	\$3,766,281	\$799,029	\$91,529	\$0	2.43%
<b>TOTAL</b>	<b>\$73,266,281</b>	<b>\$49,163,906</b>	<b>\$13,199,394</b>	<b>\$3,375,836</b>	<b>18.02%</b>
<b>El Modena High School</b>					
Phase 1 - HS Science Center	\$40,756,811	\$32,064,998	\$9,857,113	\$1,919,020	24.19%
Phase 2	\$32,016,186	\$134,289	\$132,289	\$0	0.41%
<b>TOTAL</b>	<b>\$72,772,997</b>	<b>\$32,199,287</b>	<b>\$9,989,403</b>	<b>\$1,919,020</b>	<b>13.73%</b>
<b>Orange High School</b>					
Phase 1 - HS Science Center	\$52,388,588	\$40,148,709	\$23,976,487	\$4,274,638	45.77%
Phase 2	\$20,477,375	\$208,025	\$203,663	\$0	0.99%
<b>TOTAL</b>	<b>\$72,865,963</b>	<b>\$40,356,735</b>	<b>\$24,180,150</b>	<b>\$4,274,638</b>	<b>33.18%</b>
<b>Villa Park High School</b>					
Phase 1 - HS Science Center	\$45,200,000	\$31,118,652	\$10,590,356	\$944,195	23.43%
Phase 2	\$27,498,662	\$160,375	\$159,375	\$0	0.58%
<b>TOTAL</b>	<b>\$72,698,662</b>	<b>\$31,279,028</b>	<b>\$10,749,732</b>	<b>\$944,195</b>	<b>14.79%</b>



### 3.1 Project Cost Estimates

#### Measure S Bond Program

Financial Report for February 2020

#### Budget vs Actuals - By School and Budget Category with Vendor Detail

QSS Data thru 2/29/2020

	Budget	Contracted to Date	Expended to Date	Quarterly Expense Jan '20 - Mar '20	% Expended
<b>Canyon High School</b>					
<b>390-9520 Canyon HS Science Center (DSA 04-117300)</b>					
<b>1. Design Cost</b>					
<b>1.01 Architect</b>					
UNCOMMITTED	\$21,720	\$0	\$0	\$0	
GKKWORKS   CANNON DESIGN	\$3,113,930	\$3,113,930	\$2,632,135	\$122,623	84.53%
LIONAKIS	\$14,058	\$14,058	\$14,058	\$0	100.00%
	<b>\$3,149,708</b>	<b>\$3,127,988</b>	<b>\$2,646,193</b>	<b>\$122,623</b>	<b>84.01%</b>
<b>2. Construction Cost</b>					
<b>2.01 Construction - Science Center</b>					
UNCOMMITTED	\$550,991	\$0	\$0	\$0	
ACCO ENGINEERED SYSTEMS INC	\$159,986	\$159,986	\$128,188	\$0	80.13%
CITY OF ANAHEIM - ELECTRICAL ENGINEERING DIV	\$91,340	\$91,340	\$91,340	\$0	100.00%
SWINERTON BUILDERS	\$37,385,469	\$37,385,469	\$6,304,383	\$2,743,329	16.86%
	<b>\$38,187,786</b>	<b>\$37,636,795</b>	<b>\$6,523,912</b>	<b>\$2,743,329</b>	<b>17.08%</b>
<b>3. Program and Construction Management</b>					
<b>3.01 Program Management Fees</b>					
UNCOMMITTED	\$1,501,191	\$0	\$0	\$0	
CUMMING CONSTRUCTION MGMT INC	\$911,296	\$2,200,957	\$713,009	\$52,259	78.24%
	<b>\$2,412,486</b>	<b>\$2,200,957</b>	<b>\$713,009</b>	<b>\$52,259</b>	<b>29.55%</b>
<b>3.02 Construction Management Fees</b>					
UNCOMMITTED	\$1,469,713	\$0	\$0	\$0	
CORDOBA CORPORATION	\$74,438	\$74,438	\$36,314	\$4,050	48.78%
GAFCON INC	\$1,516,569	\$2,435,801	\$1,142,483	\$74,547	75.33%
	<b>\$3,060,719</b>	<b>\$2,510,238</b>	<b>\$1,178,797</b>	<b>\$78,597</b>	<b>38.51%</b>
<b>4. Construction Support Costs</b>					
<b>4.01 Rental</b>					
UNCOMMITTED	\$1	\$0	\$0	\$0	
	<b>\$1</b>	<b>\$0</b>	<b>\$0</b>	<b>\$0</b>	<b>0.00%</b>
<b>4.02 Title, Environmental, Stormwater Management</b>					
UNCOMMITTED	\$59,466	\$0	\$0	\$0	
CHICAGO TITLE COMPANY	\$750	\$750	\$750	\$0	100.00%
CITY OF ANAHEIM	\$2,000	\$2,000	\$2,000	\$0	100.00%
CITY OF ANAHEIM - WATER	\$695	\$695	\$695	\$0	100.00%
COUNTY OF ORANGE - ENVIRONMENTAL HEALTH	\$1,615	\$1,615	\$1,615	\$0	100.00%
ENVIRONMENTAL AUDIT INC	\$50,800	\$50,800	\$21,375	\$0	42.08%
OUSD COST OF INTEREST DISTRIBUTION	\$1	\$1	\$1	\$0	100.00%





## Measure S Bond Program

Financial Report for February 2020

### Budget vs Actuals - By School and Budget Category with Vendor Detail

QSS Data thru 2/29/2020

	Budget	Contracted to Date	Expended to Date	Quarterly Expense Jan '20 - Mar '20	% Expended
<b>4.03 Commissioning</b>	<b>\$115,327</b>	<b>\$55,861</b>	<b>\$26,436</b>	<b>\$0</b>	<b>22.92%</b>
UNCOMMITTED	\$9,841	\$0	\$0	\$0	
P2S ENGINEERING INC	\$49,202	\$49,202	\$20,220	\$0	41.10%
	<b>\$59,043</b>	<b>\$49,202</b>	<b>\$20,220</b>	<b>\$0</b>	<b>34.25%</b>
<b>4.04 Builders Risk Insurance</b>					
UNCOMMITTED	\$0	\$0	\$0	\$0	
	<b>\$0</b>	<b>\$0</b>	<b>\$0</b>	<b>\$0</b>	
<b>4.05 DSA Review Fees</b>					
UNCOMMITTED	\$86,663	\$0	\$0	\$0	
DIVISION OF STATE ARCHITECT	\$504,370	\$504,370	\$504,370	\$0	100.00%
	<b>\$591,033</b>	<b>\$504,370</b>	<b>\$504,370</b>	<b>\$0</b>	<b>85.34%</b>
<b>4.06 Postage, Printing &amp; Advertising</b>					
UNCOMMITTED	\$59,830	\$0	\$0	\$0	
AMERICAN REPROGRAPHICS CO LLC	\$13,561	\$13,561	\$10,637	\$537	78.44%
SOUTHERN CALIFORNIA NEWS GROUP	\$2,605	\$2,605	\$2,605	\$0	100.00%
	<b>\$75,997</b>	<b>\$16,167</b>	<b>\$13,242</b>	<b>\$537</b>	<b>17.42%</b>
<b>4.07 DSA Inspection</b>					
UNCOMMITTED	\$139,851	\$0	\$0	\$0	
KNOWLAND CONSTRUCTION SERVICES	\$454,016	\$454,016	\$47,432	\$35,464	10.45%
	<b>\$593,867</b>	<b>\$454,016</b>	<b>\$47,432</b>	<b>\$35,464</b>	<b>7.99%</b>
<b>4.08 DSA Construction Phase Testing</b>					
UNCOMMITTED	\$462,291	\$0	\$0	\$0	
AMERICAN ENGINEERING LABORATORIES INC	\$185,580	\$185,580	\$29,117	\$29,117	15.69%
	<b>\$647,871</b>	<b>\$185,580</b>	<b>\$29,117</b>	<b>\$29,117</b>	<b>4.49%</b>
<b>4.09 Relocation</b>					
UNCOMMITTED	\$25,000	\$0	\$0	\$0	
	<b>\$25,000</b>	<b>\$0</b>	<b>\$0</b>	<b>\$0</b>	<b>0.00%</b>
<b>4.10 Labor Compliance</b>					
UNCOMMITTED	\$47,498	\$0	\$0	\$0	
	<b>\$47,498</b>	<b>\$0</b>	<b>\$0</b>	<b>\$0</b>	<b>0.00%</b>
<b>4.11 Preliminary Testing (Hazmat, Topo Survey, Geo</b>					
UNCOMMITTED	\$561,128	\$0	\$0	\$0	
C BELOW SUBSURFACE IMAGING (Subsurface Investigation)	\$8,445	\$8,445	\$8,445	\$0	100.00%
CALIFORNIA GEOLOGICAL SURVEY (Geology and Seismology Review)	\$3,600	\$3,600	\$3,600	\$0	100.00%
ENVIRONMENTAL NETWORK CORPORATION	\$20,210	\$20,210	\$0	\$0	0.00%
HARRINGTON GEOTECHNICAL ENGINEERING INC (Geotechnical Soils Investigation)	\$13,500	\$13,500	\$13,500	\$0	100.00%
PROVENCER, GEORGE (dba PROVO ENGINEERING)	\$720	\$720	\$720	\$0	100.00%
RMA GROUP (dba SITESCAN)	\$26,103	\$26,103	\$26,103	\$0	100.00%
XICOTENCATL ENRIQUE SALAZAR (Topographical Survey)	\$20,100	\$20,100	\$20,100	\$0	100.00%



## Measure S Bond Program

Financial Report for February 2020

### Budget vs Actuals - By School and Budget Category with Vendor Detail

QSS Data thru 2/29/2020

	Budget	Contracted to Date	Expended to Date	Quarterly Expense Jan '20 - Mar '20	% Expended
<b>4.12 Utility Connection Fees (with Local Permittin</b>	<b>\$653,806</b>	<b>\$92,678</b>	<b>\$72,468</b>	<b>\$0</b>	<b>11.08%</b>
UNCOMMITTED	\$182,244	\$0	\$0	\$0	
AT&T	\$5,302	\$5,302	\$5,302	\$5,302	100.00%
SOUTHERN CALIFORNIA GAS CO	\$2,445	\$2,445	\$2,445	\$0	100.00%
	<b>\$189,991</b>	<b>\$7,747</b>	<b>\$7,747</b>	<b>\$5,302</b>	<b>4.08%</b>
<b>4.13 FF&amp;E (Laboratory Tables and Chairs, other)</b>					
UNCOMMITTED	\$666,227	\$0	\$0	\$0	
	<b>\$666,227</b>	<b>\$0</b>	<b>\$0</b>	<b>\$0</b>	<b>0.00%</b>
<b>4.14 Legal Counsel</b>					
UNCOMMITTED	\$94,996	\$0	\$0	\$0	
	<b>\$94,996</b>	<b>\$0</b>	<b>\$0</b>	<b>\$0</b>	<b>0.00%</b>
<b>5. Contingency</b>					
<b>5.01 Construction Contingency</b>					
UNCOMMITTED	\$3,840,000	\$0	\$0	\$0	
	<b>\$3,840,000</b>	<b>\$0</b>	<b>\$0</b>	<b>\$0</b>	<b>0.00%</b>
<b>5.02 Project Contingency</b>					
UNCOMMITTED	\$12,861,855	\$0	\$0	\$0	
	<b>\$12,861,855</b>	<b>\$0</b>	<b>\$0</b>	<b>\$0</b>	<b>0.00%</b>
<b>Total 390-9520 Canyon HS Science Center (DSA 04-117300)</b>	<b>\$67,273,210</b>	<b>\$46,841,598</b>	<b>\$11,782,943</b>	<b>\$3,067,229</b>	<b>17.52%</b>
<b>390-9520 Canyon HS Unallocated Funds F21</b>					
<b>4. Construction Support Costs</b>					
<b>4.15 Miscellaneous Fees</b>					
UNCOMMITTED	\$0	\$0	\$0	\$0	
OUSD COST OF INTEREST DISTRIBUTION	\$36,936	\$36,936	\$36,936	\$0	100.00%
	<b>\$36,936</b>	<b>\$36,936</b>	<b>\$36,936</b>	<b>\$0</b>	<b>100.00%</b>
<b>5. Program Reserve</b>					
<b>5.03 Interest Earned - Reserve</b>					
UNCOMMITTED	\$1,229,345	\$0	\$0	\$0	
	<b>\$1,229,345</b>	<b>\$0</b>	<b>\$0</b>	<b>\$0</b>	<b>0.00%</b>
<b>Total 390-9520 Canyon HS Unallocated Funds F21</b>	<b>\$1,266,281</b>	<b>\$36,936</b>	<b>\$36,936</b>	<b>\$0</b>	<b>2.92%</b>
<b>390-0000 Canyon HS IP Surveillance Camera and Systems</b>					
<b>1. FF&amp;E (IP Surveillance Camera)</b>					
<b>\$5000+ New Equipment</b>					
UNCOMMITTED	\$0	\$0	\$0	\$0	



## Measure S Bond Program

Financial Report for February 2020

### Budget vs Actuals - By School and Budget Category with Vendor Detail

QSS Data thru 2/29/2020

	Budget	Contracted to Date	Expended to Date	Quarterly Expense Jan '20 - Mar '20	% Expended
CDW GOVERNMENT INC (Parts for IP Camera Systems)	\$29,337	\$29,337	\$29,337	\$0	100.00%
DIGITAL NETWORKS GROUP INC (F/I IP Camera Software)	\$7,093	\$7,093	\$7,093	\$0	100.00%
INTER-PACIFIC INC (Install IP Based Surveillance Camera System)	\$18,163	\$18,163	\$18,163	\$0	100.00%
	<b>\$54,593</b>	<b>\$54,593</b>	<b>\$54,593</b>	<b>\$0</b>	<b>100.00%</b>
<b>Total 390-0000 Canyon HS IP Surveillance Camera and Systems</b>	<b>\$54,593</b>	<b>\$54,593</b>	<b>\$54,593</b>	<b>\$0</b>	<b>100.00%</b>
<b>390-9520 Canyon HS Interim Kitchen (DSA 04-118418)</b>					
<b>1. Design Cost</b>					
<b>1.01 Architect</b>					
UNCOMMITTED	\$0	\$0	\$0	\$0	
GKKWORKS   CANNON DESIGN	\$119,620	\$119,620	\$2,550	\$0	2.13%
	<b>\$119,620</b>	<b>\$119,620</b>	<b>\$2,550</b>	<b>\$0</b>	<b>2.13%</b>
<b>2. Construction Cost</b>					
<b>2.01 Construction</b>					
UNCOMMITTED	\$10	\$0	\$0	\$0	
E.R.E.S. ENTERPRISES INC DBA ECONOMY RESTAURANT EQUIP	\$49,721	\$49,721	\$49,721	\$0	100.00%
SWINERTON BUILDERS	\$1,014,531	\$1,014,531	\$1,008,797	\$257,628	99.43%
THE DICKLER CORPORATION DBA CHEFS TOYS	\$109,449	\$109,449	\$109,449	\$25,195	100.00%
	<b>\$1,173,711</b>	<b>\$1,173,702</b>	<b>\$1,167,967</b>	<b>\$282,824</b>	<b>99.51%</b>
<b>4. Construction Support Costs</b>					
<b>4.01 Rental</b>					
UNCOMMITTED	\$0	\$0	\$0	\$0	
ELITE MODULAR LEASING & SALES INC	\$131,733	\$131,733	\$82,229	\$0	62.42%
	<b>\$131,733</b>	<b>\$131,733</b>	<b>\$82,229</b>	<b>\$0</b>	<b>62.42%</b>
<b>4.05 DSA Review Fees</b>					
UNCOMMITTED	\$0	\$0	\$0	\$0	
DIVISION OF STATE ARCHITECT	\$5,775	\$5,775	\$5,775	\$0	100.00%
	<b>\$5,775</b>	<b>\$5,775</b>	<b>\$5,775</b>	<b>\$0</b>	<b>100.00%</b>
<b>4.07 DSA Inspection</b>					
UNCOMMITTED	\$0	\$0	\$0	\$0	
KNOWLAND CONSTRUCTION SERVICES	\$71,104	\$71,104	\$53,944	\$25,784	75.87%
	<b>\$71,104</b>	<b>\$71,104</b>	<b>\$53,944</b>	<b>\$25,784</b>	<b>75.87%</b>
<b>4.08 DSA Construction Phase Testing</b>					
UNCOMMITTED	\$0	\$0	\$0	\$0	
AMERICAN ENGINEERING LABORATORIES INC	\$17,100	\$17,100	\$8,548	\$0	49.99%
	<b>\$17,100</b>	<b>\$17,100</b>	<b>\$8,548</b>	<b>\$0</b>	<b>49.99%</b>
<b>4.09 Relocation Services (Charged to District)</b>					
UNCOMMITTED	\$0	\$0	\$0	\$0	



## Measure S Bond Program

Financial Report for February 2020

### Budget vs Actuals - By School and Budget Category with Vendor Detail

QSS Data thru 2/29/2020

	Budget	Contracted to Date	Expended to Date	Quarterly Expense Jan '20 - Mar '20	% Expended
<b>4.10 Labor Compliance</b>	\$0	\$0	\$0	\$0	
UNCOMMITTED	\$0	\$0	\$0	\$0	
<b>4.11 Preliminary Testing (Hazmat, Topo, Geo etc)</b>	\$0	\$0	\$0	\$0	
UNCOMMITTED	\$0	\$0	\$0	\$0	
ENVIRONMENTAL NETWORK CORPORATION	\$4,245	\$4,245	\$3,910	\$0	92.10%
	<b>\$4,245</b>	<b>\$4,245</b>	<b>\$3,910</b>	<b>\$0</b>	<b>92.10%</b>
<b>Total 390-9520 Canyon HS Interim Kitchen (DSA 04-118418)</b>	<b>\$1,523,289</b>	<b>\$1,523,279</b>	<b>\$1,324,923</b>	<b>\$308,608</b>	<b>86.98%</b>
<b>390-9520 Canyon HS Phase II Planning and Design</b>					
<b>1. Design Cost</b>					
<b>1.01 Architect-Engineering Fees</b>					
UNCOMMITTED	\$620,000	\$0	\$0	\$0	
GKKWORKS   CANNON DESIGN	\$43,500	\$663,500	\$0	\$0	0.00%
	<b>\$663,500</b>	<b>\$663,500</b>	<b>\$0</b>	<b>\$0</b>	<b>0.00%</b>
<b>1.02 AE Design Contingency</b>					
UNCOMMITTED	\$44,000	\$0	\$0	\$0	
GKKWORKS   CANNON DESIGN	\$0	\$44,000	\$0	\$0	
	<b>\$44,000</b>	<b>\$44,000</b>	<b>\$0</b>	<b>\$0</b>	<b>0.00%</b>
<b>Total 390-9520 Canyon HS Phase II Planning and Design</b>	<b>\$707,500</b>	<b>\$707,500</b>	<b>\$0</b>	<b>\$0</b>	<b>0.00%</b>
<b>390-TBD Canyon HS Science Center Unallocated Funds F22</b>					
<b>1. Unallocated Bond Funds</b>					
<b>1.01 Unbudgeted Bond Funds</b>					
UNCOMMITTED	\$703,502	\$0	\$0	\$0	
	<b>\$703,502</b>	<b>\$0</b>	<b>\$0</b>	<b>\$0</b>	<b>0.00%</b>
<b>Total 390-TBD Canyon HS Science Center Unallocated Funds F22</b>	<b>\$703,502</b>	<b>\$0</b>	<b>\$0</b>	<b>\$0</b>	<b>0.00%</b>
<b>390-TBD Canyon HS Unallocated Funds F22</b>					
<b>1. Unallocated Bond Funds</b>					
<b>1.01 Unbudgeted Bond Funds</b>					
UNCOMMITTED	\$1,737,907	\$0	\$0	\$0	
	<b>\$1,737,907</b>	<b>\$0</b>	<b>\$0</b>	<b>\$0</b>	<b>0.00%</b>
<b>Total 390-TBD Canyon HS Unallocated Funds F22</b>	<b>\$1,737,907</b>	<b>\$0</b>	<b>\$0</b>	<b>\$0</b>	<b>0.00%</b>
<b>Canyon High School</b>	<b>\$73,266,281</b>	<b>\$49,163,906</b>	<b>\$13,199,394</b>	<b>\$3,375,836</b>	<b>18.02%</b>





## Measure S Bond Program

Financial Report for February 2020

### Budget vs Actuals - By School and Budget Category with Vendor Detail

QSS Data thru 2/29/2020

	Budget	Contracted to Date	Expended to Date	Quarterly Expense Jan '20 - Mar '20	% Expended
<b>El Modena High School</b>					
<b>391-0000 El Modena HS IP Surveillance Camera and Systems</b>					
<b>1. FF&amp;E (IP Surveillance Camera)</b>					
<b>5000+ New Equipment</b>					
UNCOMMITTED	\$0	\$0	\$0	\$0	
CDW GOVERNMENT INC (Parts for IP Camera Systems)	\$39,388	\$39,388	\$39,388	\$0	100.00%
DIGITAL NETWORKS GROUP INC (F/I IP Camera Software)	\$11,719	\$11,719	\$11,719	\$0	100.00%
INTER-PACIFIC INC (Install IP Based Surveillance Camera System)	\$30,073	\$30,073	\$30,073	\$0	100.00%
	<b>\$81,179</b>	<b>\$81,179</b>	<b>\$81,179</b>	<b>\$0</b>	<b>100.00%</b>
<b>Total 391-0000 El Modena HS IP Surveillance Camera and Systems</b>	<b>\$81,179</b>	<b>\$81,179</b>	<b>\$81,179</b>	<b>\$0</b>	<b>100.00%</b>
<b>391-9520 El Modena HS Science Center (DSA 04-117098)</b>					
<b>1. Design Cost</b>					
<b>1.01 Architect</b>					
UNCOMMITTED	\$0	\$0	\$0	\$0	
HARLEY ELLIS DEVEREAUX	\$1,954,014	\$1,954,014	\$1,575,018	\$0	80.60%
LIONAKIS	\$14,059	\$14,059	\$14,059	\$0	100.00%
	<b>\$1,968,073</b>	<b>\$1,968,073</b>	<b>\$1,589,077</b>	<b>\$0</b>	<b>80.74%</b>
<b>2. Construction Cost</b>					
<b>2.01 Construction - Science Center</b>					
UNCOMMITTED	\$56,979	\$0	\$0	\$0	
ACCO ENGINEERED SYSTEMS INC	\$355,544	\$355,544	\$59,930	\$59,930	16.86%
ANGELES CONTRACTOR, INC	\$25,818,000	\$25,818,000	\$6,038,115	\$1,730,307	23.39%
FAIR PLAY SCOREBOARDS	\$17,694	\$17,694	\$0	\$0	0.00%
	<b>\$26,248,217</b>	<b>\$26,191,238</b>	<b>\$6,098,045</b>	<b>\$1,790,237</b>	<b>23.23%</b>
<b>3. Program and Construction Management</b>					
<b>3.01 Program Management Fees</b>					
UNCOMMITTED	\$404,276	\$0	\$0	\$0	
CUMMING CONSTRUCTION MGMT INC	\$622,509	\$1,026,785	\$515,569	\$26,130	82.82%
	<b>\$1,026,785</b>	<b>\$1,026,785</b>	<b>\$515,569</b>	<b>\$26,130</b>	<b>50.21%</b>
<b>3.02 Construction Management Fees</b>					
UNCOMMITTED	\$337,187	\$0	\$0	\$0	
ARCADIS U.S. INC	\$1,449,615	\$1,687,554	\$1,055,034	\$83,025	72.78%
CORDOBA CORPORATION	\$74,438	\$74,438	\$39,576	\$4,050	53.17%
	<b>\$1,861,240</b>	<b>\$1,761,991</b>	<b>\$1,094,610</b>	<b>\$87,075</b>	<b>58.81%</b>

#### 4. Construction Support Costs



## Measure S Bond Program

Financial Report for February 2020

### Budget vs Actuals - By School and Budget Category with Vendor Detail

QSS Data thru 2/29/2020

	Budget	Contracted to Date	Expended to Date	Quarterly Expense Jan '20 - Mar '20	% Expended
<b>4.01 Rental</b>					
UNCOMMITTED	\$0	\$0	\$0	\$0	
	<b>\$0</b>	<b>\$0</b>	<b>\$0</b>	<b>\$0</b>	
<b>4.02 Title, Environmental, Stormwater Management</b>					
UNCOMMITTED	\$84,517	\$0	\$0	\$0	
CHICAGO TITLE COMPANY	\$1,500	\$1,500	\$1,500	\$0	100.00%
CITY OF ORANGE (PUBLIC WORKS)	\$71	\$71	\$71	\$0	100.00%
CITY OF ORANGE (WATER DIVISION)	\$16,048	\$16,048	\$16,048	\$0	100.00%
ENVIRONMENTAL AUDIT INC	\$10,950	\$10,950	\$8,548	\$0	78.06%
OUSD COST OF INTEREST DISTRIBUTION	\$1	\$1	\$1	\$0	100.00%
	<b>\$113,087</b>	<b>\$28,570</b>	<b>\$26,167</b>	<b>\$0</b>	<b>23.14%</b>
<b>4.03 Commissioning</b>					
UNCOMMITTED	\$0	\$0	\$0	\$0	
P2S ENGINEERING INC	\$30,558	\$30,558	\$19,891	\$0	65.09%
	<b>\$30,558</b>	<b>\$30,558</b>	<b>\$19,891</b>	<b>\$0</b>	<b>65.09%</b>
<b>4.04 Builders Risk Insurance</b>					
UNCOMMITTED	\$0	\$0	\$0	\$0	
	<b>\$0</b>	<b>\$0</b>	<b>\$0</b>	<b>\$0</b>	
<b>4.05 DSA Review Fees</b>					
UNCOMMITTED	\$174,729	\$0	\$0	\$0	
DIVISION OF STATE ARCHITECT	\$306,338	\$306,338	\$306,338	\$0	100.00%
	<b>\$481,067</b>	<b>\$306,338</b>	<b>\$306,338</b>	<b>\$0</b>	<b>63.68%</b>
<b>4.06 Postage, Printing &amp; Advertising</b>					
UNCOMMITTED	\$27,496	\$0	\$0	\$0	
AMERICAN REPROGRAPHICS CO LLC	\$19,648	\$19,648	\$15,928	\$281	81.07%
SOUTHERN CALIFORNIA NEWS GROUP	\$2,024	\$2,024	\$2,024	\$0	100.00%
	<b>\$49,168</b>	<b>\$21,672</b>	<b>\$17,952</b>	<b>\$281</b>	<b>36.51%</b>
<b>4.07 DSA Inspection</b>					
UNCOMMITTED	\$191,367	\$0	\$0	\$0	
BPI INSPECTION SERVICE	\$238,850	\$238,850	\$49,130	\$0	20.57%
	<b>\$430,217</b>	<b>\$238,850</b>	<b>\$49,130</b>	<b>\$0</b>	<b>11.42%</b>
<b>4.08 DSA Construction Phase Testing</b>					
UNCOMMITTED	\$106,934	\$0	\$0	\$0	
KOURY ENGINEERING & TESTING INC (Geotechnical Engineering)	\$323,283	\$323,283	\$55,656	\$15,298	17.22%
	<b>\$430,217</b>	<b>\$323,283</b>	<b>\$55,656</b>	<b>\$15,298</b>	<b>12.94%</b>
<b>4.09 Relocation</b>					
UNCOMMITTED	\$0	\$0	\$0	\$0	
	<b>\$0</b>	<b>\$0</b>	<b>\$0</b>	<b>\$0</b>	
<b>4.10 Labor Compliance</b>					
UNCOMMITTED	\$61,460	\$0	\$0	\$0	
	<b>\$61,460</b>	<b>\$0</b>	<b>\$0</b>	<b>\$0</b>	<b>0.00%</b>



## Measure S Bond Program

Financial Report for February 2020

### Budget vs Actuals - By School and Budget Category with Vendor Detail

QSS Data thru 2/29/2020

	Budget	Contracted to Date	Expended to Date	Quarterly Expense Jan '20 - Mar '20	% Expended
<b>4.11 Preliminary Testing (Hazmat, Topo Survey, Geo)</b>					
UNCOMMITTED	\$402,824	\$0	\$0	\$0	
ALLEGIAN FIRE PROTECTION INC	\$525	\$525	\$525	\$0	100.00%
CALIFORNIA GEOLOGICAL SURVEY (Geology and Seismology Review)	\$3,600	\$3,600	\$3,600	\$0	100.00%
ENVIRONMENTAL NETWORK CORPORATION	\$3,412	\$3,412	\$0	\$0	0.00%
HARLEY ELLIS DEVEREAUX	\$14,908	\$14,908	\$14,908	\$0	100.00%
NINYO & MOORE	\$29,981	\$29,981	\$29,771	\$0	99.30%
PCA ARBORISTS & CONSULTANTS INC	\$1,569	\$1,569	\$1,569	\$0	100.00%
THE CONVERSE PROFESSIONAL GROUP (Soils Investigation)	\$30,640	\$30,640	\$30,640	\$0	100.00%
	<b>\$487,459</b>	<b>\$84,635</b>	<b>\$81,013</b>	<b>\$0</b>	<b>16.62%</b>
<b>4.12 Utility Connection Fees (with Local Permittin</b>					
UNCOMMITTED	\$119,254	\$0	\$0	\$0	
SOUTHERN CALIFORNIA EDISON	\$3,665	\$3,665	\$3,665	\$0	100.00%
	<b>\$122,919</b>	<b>\$3,665</b>	<b>\$3,665</b>	<b>\$0</b>	<b>2.98%</b>
<b>4.13 FF&amp;E (Laboratory Tables and Chairs, other)</b>					
UNCOMMITTED	\$983,354	\$0	\$0	\$0	
	<b>\$983,354</b>	<b>\$0</b>	<b>\$0</b>	<b>\$0</b>	<b>0.00%</b>
<b>4.14 Legal Counsel</b>					
UNCOMMITTED	\$61,460	\$0	\$0	\$0	
	<b>\$61,460</b>	<b>\$0</b>	<b>\$0</b>	<b>\$0</b>	<b>0.00%</b>
<b>4.15 Miscellaneous Fees</b>					
UNCOMMITTED	\$0	\$0	\$0	\$0	
	<b>\$0</b>	<b>\$0</b>	<b>\$0</b>	<b>\$0</b>	
<b>5. Contingency</b>					
<b>5.01 Construction Contingency</b>					
UNCOMMITTED	\$1,981,800	\$0	\$0	\$0	
	<b>\$1,981,800</b>	<b>\$0</b>	<b>\$0</b>	<b>\$0</b>	<b>0.00%</b>
<b>5.02 Project Contingency</b>					
UNCOMMITTED	\$1,906,750	\$0	\$0	\$0	
ARCADIS U.S. INC	\$0	\$0	\$0	\$0	
	<b>\$1,906,750</b>	<b>\$0</b>	<b>\$0</b>	<b>\$0</b>	<b>0.00%</b>
<b>Total 391-9520 El Modena HS Science Center (DSA 04-117098)</b>	<b>\$38,243,831</b>	<b>\$31,985,658</b>	<b>\$9,857,113</b>	<b>\$1,919,020</b>	<b>25.77%</b>
<b>391-9520 El Modena HS Phase II Planning and Design</b>					
<b>1. Design Cost</b>					
<b>1.01 Architect</b>					
UNCOMMITTED	\$625	\$0	\$0	\$0	
HARLEY ELLIS DEVEREAUX	\$30,560	\$30,560	\$28,560	\$0	93.46%



## Measure S Bond Program

Financial Report for February 2020

### Budget vs Actuals - By School and Budget Category with Vendor Detail

QSS Data thru 2/29/2020

	Budget	Contracted to Date	Expended to Date	Quarterly Expense Jan '20 - Mar '20	% Expended
	\$31,185	\$30,560	\$28,560	\$0	91.58%
<b>5. Contingency</b>					
<b>5.01 Construction Contingency</b>					
UNCOMMITTED	\$0	\$0	\$0	\$0	
	\$0	\$0	\$0	\$0	
<b>5.02 Project Contingency</b>					
UNCOMMITTED	\$1,799,375	\$0	\$0	\$0	
	\$1,799,375	\$0	\$0	\$0	0.00%
<b>Total 391-9520 El Modena HS Phase II Planning and Design</b>	\$1,830,560	\$30,560	\$28,560	\$0	1.56%
<b>391-9520 El Modena HS Quad Shade Structures (DSA 04-119124)</b>					
<b>1. Design Cost</b>					
<b>1.01 Architect</b>					
UNCOMMITTED	\$0	\$0	\$0	\$0	
HARLEY ELLIS DEVEREAUX	\$79,340	\$79,340	\$0	\$0	0.00%
	\$79,340	\$79,340	\$0	\$0	0.00%
<b>2. Construction Cost</b>					
<b>2.01 Construction</b>					
UNCOMMITTED	\$0	\$0	\$0	\$0	
	\$0	\$0	\$0	\$0	
<b>4. Construction Support Costs</b>					
<b>4.05 DSA Review Fees</b>					
UNCOMMITTED	\$9,650	\$0	\$0	\$0	
	\$9,650	\$0	\$0	\$0	0.00%
<b>5. Contingency</b>					
<b>5.01 Construction Contingency</b>					
UNCOMMITTED	\$600,000	\$0	\$0	\$0	
	\$600,000	\$0	\$0	\$0	0.00%
<b>Total 391-9520 El Modena HS Quad Shade Structures (DSA 04-119124)</b>	\$688,990	\$79,340	\$0	\$0	0.00%
<b>391-TBD El Modena HS Science Center Unallocated Funds F22</b>					
<b>1. Unallocated Bond Funds</b>					
<b>1.01 Unbudgeted Bond Funds</b>					
UNCOMMITTED	\$1,823,990	\$0	\$0	\$0	
	\$1,823,990	\$0	\$0	\$0	0.00%



**Measure S Bond Program**

Financial Report for February 2020

**Budget vs Actuals - By School and Budget Category with Vendor Detail**

QSS Data thru 2/29/2020

	Budget	Contracted to Date	Expended to Date	Quarterly Expense Jan '20 - Mar '20	% Expended
<b>Total 391-TBD El Modena HS Science Center Unallocated Funds F22</b>	<b>\$1,823,990</b>	<b>\$0</b>	<b>\$0</b>	<b>\$0</b>	<b>0.00%</b>
<b>391-9520 El Modena HS Unallocated Funds F21</b>					
<b>4. Construction Support Costs</b>					
<b>4.15 Miscellaneous Fees</b>					
UNCOMMITTED	\$0	\$0	\$0	\$0	
OUSD COST OF INTEREST DISTRIBUTION	\$22,550	\$22,550	\$22,550	\$0	100.00%
	<b>\$22,550</b>	<b>\$22,550</b>	<b>\$22,550</b>	<b>\$0</b>	<b>100.00%</b>
<b>5. Program Reserve</b>					
<b>5.03 Interest Earned - Reserve</b>					
UNCOMMITTED	\$750,447	\$0	\$0	\$0	
	<b>\$750,447</b>	<b>\$0</b>	<b>\$0</b>	<b>\$0</b>	<b>0.00%</b>
<b>Total 391-9520 El Modena HS Unallocated Funds F21</b>	<b>\$772,997</b>	<b>\$22,550</b>	<b>\$22,550</b>	<b>\$0</b>	<b>2.92%</b>
<b>391-TBD El Modena HS Unallocated Funds F22</b>					
<b>1. Unallocated Bond Funds</b>					
<b>1.01 Unbudgeted Bond Funds</b>					
UNCOMMITTED	\$29,331,450	\$0	\$0	\$0	
	<b>\$29,331,450</b>	<b>\$0</b>	<b>\$0</b>	<b>\$0</b>	<b>0.00%</b>
<b>Total 391-TBD El Modena HS Unallocated Funds F22</b>	<b>\$29,331,450</b>	<b>\$0</b>	<b>\$0</b>	<b>\$0</b>	<b>0.00%</b>
<b>El Modena High School</b>	<b>\$72,772,997</b>	<b>\$32,199,287</b>	<b>\$9,989,403</b>	<b>\$1,919,020</b>	<b>13.73%</b>
<b>Orange High School</b>					
<b>392-0000 Orange HS IP Surveillance Camera and Systems</b>					
<b>1. FF&amp;E (IP Surveillance Camera)</b>					
<b>\$5000+ New Equipment</b>					
UNCOMMITTED	\$0	\$0	\$0	\$0	
CDW GOVERNMENT INC (Parts for IP Camera Systems)	\$53,662	\$53,662	\$53,662	\$0	100.00%
DIGITAL NETWORKS GROUP INC (F/I IP Camera Software)	\$13,569	\$13,569	\$13,569	\$0	100.00%
INTER-PACIFIC INC (Install IP Based Surveillance Camera System)	\$34,837	\$34,837	\$34,837	\$0	100.00%
	<b>\$102,068</b>	<b>\$102,068</b>	<b>\$102,068</b>	<b>\$0</b>	<b>100.00%</b>
<b>Total 392-0000 Orange HS IP Surveillance Camera and Systems</b>	<b>\$102,068</b>	<b>\$102,068</b>	<b>\$102,068</b>	<b>\$0</b>	<b>100.00%</b>
<b>392-9520 Orange HS Science Bldg (DSA 04-116859)</b>					
<b>1. Design Cost</b>					
<b>1.01 Architect</b>					



## Measure S Bond Program

Financial Report for February 2020

### Budget vs Actuals - By School and Budget Category with Vendor Detail

QSS Data thru 2/29/2020

	Budget	Contracted to Date	Expended to Date	Quarterly Expense Jan '20 - Mar '20	% Expended
UNCOMMITTED	\$563	\$0	\$0	\$0	
LIONAKIS	\$1,871,513	\$1,871,513	\$1,633,315	\$150,930	87.27%
	<b>\$1,872,076</b>	<b>\$1,871,513</b>	<b>\$1,633,315</b>	<b>\$150,930</b>	<b>87.25%</b>

## 2. Construction Cost

### 2.01 Construction - Science Center

UNCOMMITTED	\$1	\$0	\$0	\$0	
ACCO ENGINEERED SYSTEMS INC	\$62,883	\$62,883	\$51,675	\$0	82.18%
CITY OF ORANGE (PUBLIC WORKS)	\$2,000	\$2,000	\$2,000	\$0	100.00%
GIANNELLI ELECTRIC INC	\$39,198	\$39,198	\$39,198	\$0	100.00%
GRUETT TREE CO INC (Removal of Trees)	\$7,625	\$7,625	\$7,625	\$0	100.00%
INTEGRATED DEMOLITION AND REMEDIATION (Abatement and Demolition)	\$44,800	\$44,800	\$44,800	\$0	100.00%
J & A FENCE (Custodial Storage Fencing)	\$6,885	\$6,885	\$6,885	\$0	100.00%
KYA SERVICES LLC (Install Carpet)	\$0	\$0	\$0	\$0	
OLESH, KEITH (Termite Services)	\$1,500	\$1,500	\$1,500	\$0	100.00%
PINNER CONSTRUCTION	\$26,072,783	\$26,072,783	\$11,592,872	\$3,906,680	44.46%
SOUTHERN CALIFORNIA NEWS GROUP	\$0	\$0	\$0	\$0	
TIME & ALARM SYSTEMS	\$3,100	\$3,100	\$3,100	\$0	100.00%
TRIMARK RAYGAL LLC	\$0	\$0	\$0	\$0	
UNIVERSAL ASPHALT CO (Remove and Patch Asphalt)	\$6,830	\$6,830	\$6,830	\$0	100.00%
VORTEX INDUSTRIES, INC.	\$6,804	\$6,804	\$6,804	\$0	100.00%
	<b>\$26,254,409</b>	<b>\$26,254,408</b>	<b>\$11,763,289</b>	<b>\$3,906,680</b>	<b>44.81%</b>

## 3. Program and Construction Management

### 3.01 Program Management Fees

UNCOMMITTED	\$589,297	\$0	\$0	\$0	
CUMMING CONSTRUCTION MGMT INC	\$749,191	\$1,338,488	\$603,065	\$36,291	80.50%
	<b>\$1,338,488</b>	<b>\$1,338,488</b>	<b>\$603,065</b>	<b>\$36,291</b>	<b>45.06%</b>

### 3.02 Construction Management Fees

UNCOMMITTED	\$1	\$0	\$0	\$0	
BALFOUR BEATTY CONSTRUCTION	\$1,657,500	\$1,657,501	\$1,340,287	\$0	80.86%
CORDOBA CORPORATION	\$74,438	\$74,438	\$35,269	\$4,050	47.38%
	<b>\$1,731,938</b>	<b>\$1,731,938</b>	<b>\$1,375,556</b>	<b>\$4,050</b>	<b>79.42%</b>

## 4. Construction Support Costs

### 4.01 Rental

UNCOMMITTED	\$0	\$0	\$0	\$0	
	<b>\$0</b>	<b>\$0</b>	<b>\$0</b>	<b>\$0</b>	

### 4.02 Title, Environmental, Stormwater Management

UNCOMMITTED	\$94,772	\$0	\$0	\$0	
-------------	----------	-----	-----	-----	--



## Measure S Bond Program

Financial Report for February 2020

### Budget vs Actuals - By School and Budget Category with Vendor Detail

QSS Data thru 2/29/2020

	Budget	Contracted to Date	Expended to Date	Quarterly Expense Jan '20 - Mar '20	% Expended
CHICAGO TITLE COMPANY	\$1,500	\$1,500	\$1,500	\$0	100.00%
OUSD COST OF INTEREST DISTRIBUTION	\$1	\$1	\$1	\$0	100.00%
PLACEWORKS INC	\$52,231	\$52,231	\$52,231	\$0	100.00%
STATE WATER RESOURCES CONTROL BOARD (SWRCB)	\$726	\$726	\$726	\$0	100.00%
	<b>\$149,230</b>	<b>\$54,458</b>	<b>\$54,458</b>	<b>\$0</b>	<b>36.49%</b>
<b>4.03 Commissioning</b>					
UNCOMMITTED	\$0	\$0	\$0	\$0	
P2S ENGINEERING INC	\$30,585	\$30,585	\$21,864	\$0	71.49%
	<b>\$30,585</b>	<b>\$30,585</b>	<b>\$21,864</b>	<b>\$0</b>	<b>71.49%</b>
<b>4.04 Builders Risk Insurance</b>					
UNCOMMITTED	\$0	\$0	\$0	\$0	
	<b>\$0</b>	<b>\$0</b>	<b>\$0</b>	<b>\$0</b>	
<b>4.05 DSA Review Fees</b>					
UNCOMMITTED	\$172,825	\$0	\$0	\$0	
DIVISION OF STATE ARCHITECT	\$252,750	\$252,750	\$252,750	\$0	100.00%
OUSD REVOLVING CASH	\$500	\$500	\$500	\$0	100.00%
	<b>\$426,075</b>	<b>\$253,250</b>	<b>\$253,250</b>	<b>\$0</b>	<b>59.44%</b>
<b>4.06 Postage, Printing &amp; Advertising</b>					
UNCOMMITTED	\$36,302	\$0	\$0	\$0	
AMERICAN REPROGRAPHICS CO LLC	\$11,807	\$11,807	\$8,669	\$266	73.42%
SOUTHERN CALIFORNIA NEWS GROUP	\$8,518	\$8,518	\$8,518	\$0	100.00%
	<b>\$56,626</b>	<b>\$20,325</b>	<b>\$17,186</b>	<b>\$266</b>	<b>30.35%</b>
<b>4.07 DSA Inspection</b>					
UNCOMMITTED	\$145,585	\$0	\$0	\$0	
KNOWLAND CONSTRUCTION SERVICES	\$293,319	\$293,319	\$161,472	\$27,666	55.05%
	<b>\$438,904</b>	<b>\$293,319</b>	<b>\$161,472</b>	<b>\$27,666</b>	<b>36.79%</b>
<b>4.08 DSA Construction Phase Testing</b>					
UNCOMMITTED	\$125,025	\$0	\$0	\$0	
NINYO & MOORE	\$327,624	\$327,624	\$182,049	\$142,058	55.57%
	<b>\$452,649</b>	<b>\$327,624</b>	<b>\$182,049</b>	<b>\$142,058</b>	<b>40.22%</b>
<b>4.09 Relocation</b>					
UNCOMMITTED	\$0	\$0	\$0	\$0	
	<b>\$0</b>	<b>\$0</b>	<b>\$0</b>	<b>\$0</b>	
<b>4.10 Labor Compliance</b>					
UNCOMMITTED	\$81,902	\$0	\$0	\$0	
	<b>\$81,902</b>	<b>\$0</b>	<b>\$0</b>	<b>\$0</b>	<b>0.00%</b>
<b>4.11 Preliminary Testing (Hazmat, Topo Survey, Geo</b>					
UNCOMMITTED	\$580,704	\$0	\$0	\$0	
CALIFORNIA GEOLOGICAL SURVEY (Geology and Seismology Review)	\$3,600	\$3,600	\$3,600	\$0	100.00%
KOURY ENGINEERING & TESTING INC (Geotechnical Engineering)	\$13,300	\$13,300	\$13,300	\$0	100.00%



## Measure S Bond Program

Financial Report for February 2020

### Budget vs Actuals - By School and Budget Category with Vendor Detail

QSS Data thru 2/29/2020

	Budget	Contracted to Date	Expended to Date	Quarterly Expense Jan '20 - Mar '20	% Expended
PENCO ENGINEERING INC (Topographical Survey Services)	\$42,350	\$42,350	\$41,070	\$0	96.98%
RMA GROUP (dba SITESCAN)	\$49,533	\$49,533	\$49,533	\$0	100.00%
	<b>\$689,487</b>	<b>\$108,783</b>	<b>\$107,503</b>	<b>\$0</b>	<b>15.59%</b>
<b>4.12 Utility Connection Fees (with Local Permittin</b>					
UNCOMMITTED	\$154,391	\$0	\$0	\$0	
CITY OF ORANGE (PUBLIC WORKS)	\$2,500	\$2,500	\$2,500	\$0	100.00%
SOUTHERN CALIFORNIA EDISON	\$6,912	\$6,912	\$6,912	\$0	100.00%
	<b>\$163,803</b>	<b>\$9,412</b>	<b>\$9,412</b>	<b>\$0</b>	<b>5.75%</b>
<b>4.13 FF&amp;E (Laboratory Tables and Chairs, other)</b>					
UNCOMMITTED	\$1,300,962	\$0	\$0	\$0	
CONEXWEST	\$9,466	\$9,466	\$9,419	\$0	99.51%
VORTEX INDUSTRIES, INC.	\$0	\$0	\$0	\$0	
	<b>\$1,310,428</b>	<b>\$9,466</b>	<b>\$9,419</b>	<b>\$0</b>	<b>0.72%</b>
<b>4.14 Legal Counsel</b>					
UNCOMMITTED	\$81,902	\$0	\$0	\$0	
	<b>\$81,902</b>	<b>\$0</b>	<b>\$0</b>	<b>\$0</b>	<b>0.00%</b>
<b>4.15 Miscellaneous Fees</b>					
UNCOMMITTED	\$0	\$0	\$0	\$0	
	<b>\$0</b>	<b>\$0</b>	<b>\$0</b>	<b>\$0</b>	
<b>5. Contingency</b>					
<b>5.01 Construction Contingency</b>					
UNCOMMITTED	\$2,533,617	\$0	\$0	\$0	
	<b>\$2,533,617</b>	<b>\$0</b>	<b>\$0</b>	<b>\$0</b>	<b>0.00%</b>
<b>5.02 Project Contingency</b>					
UNCOMMITTED	\$5,096,482	\$0	\$0	\$0	
	<b>\$5,096,482</b>	<b>\$0</b>	<b>\$0</b>	<b>\$0</b>	<b>0.00%</b>
<b>Total 392-9520 Orange HS Science Bldg (DSA 04-116859)</b>	<b>\$42,708,601</b>	<b>\$32,303,567</b>	<b>\$16,191,837</b>	<b>\$4,267,942</b>	<b>37.91%</b>
<b>392-9520 Orange HS Shade Structure (DSA 04-118351)</b>					
<b>2. Construction Cost</b>					
<b>2.01 Construction</b>					
UNCOMMITTED	\$0	\$0	\$0	\$0	
PINNER CONSTRUCTION	\$113,500	\$113,500	\$113,500	\$0	100.00%
	<b>\$113,500</b>	<b>\$113,500</b>	<b>\$113,500</b>	<b>\$0</b>	<b>100.00%</b>
<b>4. Construction Support Costs</b>					
<b>4.05 DSA Review Fees</b>					
UNCOMMITTED	\$162	\$0	\$0	\$0	
DIVISION OF STATE ARCHITECT	\$1,711	\$1,711	\$1,711	\$0	100.00%





## Measure S Bond Program

Financial Report for February 2020

### Budget vs Actuals - By School and Budget Category with Vendor Detail

QSS Data thru 2/29/2020

	Budget	Contracted to Date	Expended to Date	Quarterly Expense Jan '20 - Mar '20	% Expended
<b>4.07 DSA Inspection</b>	<b>\$1,873</b>	<b>\$1,711</b>	<b>\$1,711</b>	<b>\$0</b>	<b>91.35%</b>
UNCOMMITTED	\$0	\$0	\$0	\$0	
KNOWLAND CONSTRUCTION SERVICES	\$29,928	\$29,928	\$1,740	\$0	5.81%
	<b>\$29,928</b>	<b>\$29,928</b>	<b>\$1,740</b>	<b>\$0</b>	<b>5.81%</b>
<b>4.08 DSA Construction Phase Testing</b>					
UNCOMMITTED	\$0	\$0	\$0	\$0	
NINYO & MOORE	\$7,408	\$7,408	\$5,834	\$5,834	78.75%
	<b>\$7,408</b>	<b>\$7,408</b>	<b>\$5,834</b>	<b>\$5,834</b>	<b>78.75%</b>
<b>Total 392-9520 Orange HS Shade Structure (DSA 04-118351)</b>	<b>\$152,709</b>	<b>\$152,547</b>	<b>\$122,785</b>	<b>\$5,834</b>	<b>80.40%</b>
<b>392-9520 Orange HS Site Improvements (DSA 04-116673)</b>					
<b>1. Design Cost</b>					
<b>1.01 Architect</b>					
UNCOMMITTED	\$0	\$0	\$0	\$0	
LIONAKIS	\$450,189	\$450,189	\$440,430	\$0	97.83%
SILVER CREEK INDUSTRIES INC (Engineering for Warming Kitchen Relocatable Building)	\$29,682	\$29,682	\$29,682	\$0	100.00%
	<b>\$479,871</b>	<b>\$479,871</b>	<b>\$470,112</b>	<b>\$0</b>	<b>97.97%</b>
<b>2. Construction Cost</b>					
<b>2.01 Construction - Site</b>					
UNCOMMITTED	\$0	\$0	\$0	\$0	
ACCO ENGINEERED SYSTEMS INC	\$209,074	\$209,074	\$209,074	\$0	100.00%
KYA SERVICES LLC (Install Carpet)	\$20,824	\$20,824	\$9,564	\$0	45.93%
SWINERTON BUILDERS	\$6,556,428	\$6,556,428	\$6,556,428	\$863	100.00%
TRIMARK RAYGAL LLC	\$89,860	\$89,860	\$89,860	\$0	100.00%
	<b>\$6,876,186</b>	<b>\$6,876,186</b>	<b>\$6,864,926</b>	<b>\$863</b>	<b>99.84%</b>
<b>4. Construction Support Costs</b>					
<b>4.02 Title, Environmental, Stormwater Management</b>					
UNCOMMITTED	\$0	\$0	\$0	\$0	
ORANGE COUNTY HEALTH CARE AGENCY	\$1,470	\$1,470	\$1,470	\$0	100.00%
	<b>\$1,470</b>	<b>\$1,470</b>	<b>\$1,470</b>	<b>\$0</b>	<b>100.00%</b>
<b>4.03 Commissioning</b>					
UNCOMMITTED	\$0	\$0	\$0	\$0	
P2S ENGINEERING INC	\$4,755	\$4,755	\$3,338	\$0	70.20%
	<b>\$4,755</b>	<b>\$4,755</b>	<b>\$3,338</b>	<b>\$0</b>	<b>70.20%</b>
<b>4.05 DSA Review Fees</b>					
UNCOMMITTED	\$3,853	\$0	\$0	\$0	



## Measure S Bond Program

Financial Report for February 2020

### Budget vs Actuals - By School and Budget Category with Vendor Detail

QSS Data thru 2/29/2020

	Budget	Contracted to Date	Expended to Date	Quarterly Expense Jan '20 - Mar '20	% Expended
DIVISION OF STATE ARCHITECT	\$94,585	\$94,585	\$94,585	\$0	100.00%
	<b>\$98,438</b>	<b>\$94,585</b>	<b>\$94,585</b>	<b>\$0</b>	<b>96.09%</b>
<b>4.06 Postage, Printing &amp; Advertising</b>					
UNCOMMITTED	\$1	\$0	\$0	\$0	
AMERICAN REPROGRAPHICS CO LLC	\$7,630	\$7,630	\$7,630	\$0	100.00%
SOUTHERN CALIFORNIA NEWS GROUP	\$1,264	\$1,264	\$1,264	\$0	100.00%
	<b>\$8,895</b>	<b>\$8,894</b>	<b>\$8,894</b>	<b>\$0</b>	<b>99.99%</b>
<b>4.07 DSA Inspection</b>					
UNCOMMITTED	\$0	\$0	\$0	\$0	
KNOWLAND CONSTRUCTION SERVICES	\$104,480	\$104,480	\$96,985	\$0	92.83%
	<b>\$104,480</b>	<b>\$104,480</b>	<b>\$96,985</b>	<b>\$0</b>	<b>92.83%</b>
<b>4.08 DSA Construction Phase Testing</b>					
UNCOMMITTED	\$0	\$0	\$0	\$0	
NINYO & MOORE	\$113,255	\$113,255	\$112,544	\$0	99.37%
	<b>\$113,255</b>	<b>\$113,255</b>	<b>\$112,544</b>	<b>\$0</b>	<b>99.37%</b>
<b>4.09 Relocation</b>					
UNCOMMITTED	\$0	\$0	\$0	\$0	
	<b>\$0</b>	<b>\$0</b>	<b>\$0</b>	<b>\$0</b>	
<b>4.10 Labor Compliance</b>					
UNCOMMITTED	\$0	\$0	\$0	\$0	
	<b>\$0</b>	<b>\$0</b>	<b>\$0</b>	<b>\$0</b>	
<b>4.11 Preliminary Testing (Hazmat, Topo Survey, Geo</b>					
UNCOMMITTED	\$0	\$0	\$0	\$0	
ENVIRONMENTAL NETWORK CORPORATION	\$9,100	\$9,100	\$9,012	\$0	99.03%
	<b>\$9,100</b>	<b>\$9,100</b>	<b>\$9,012</b>	<b>\$0</b>	<b>99.03%</b>
<b>5. Contingency</b>					
<b>5.01 Construction Contingency</b>					
UNCOMMITTED	\$11,778	\$0	\$0	\$0	
	<b>\$11,778</b>	<b>\$0</b>	<b>\$0</b>	<b>\$0</b>	<b>0.00%</b>
<b>5.02 Project Contingency</b>					
UNCOMMITTED	\$298,271	\$0	\$0	\$0	
	<b>\$298,271</b>	<b>\$0</b>	<b>\$0</b>	<b>\$0</b>	<b>0.00%</b>
<b>Total 392-9520 Orange HS Site Improvements (DSA 04-116673)</b>	<b>\$8,006,498</b>	<b>\$7,692,596</b>	<b>\$7,661,866</b>	<b>\$863</b>	<b>95.70%</b>

### 392-9520 Orange HS Phase II Planning and Design

#### 1. Design Cost

##### 1.01 Architect

UNCOMMITTED	\$0	\$0	\$0	\$0	
LIONAKIS	\$80,500	\$80,500	\$76,138	\$0	94.58%



## Measure S Bond Program

Financial Report for February 2020

### Budget vs Actuals - By School and Budget Category with Vendor Detail

QSS Data thru 2/29/2020

	Budget	Contracted to Date	Expended to Date	Quarterly Expense Jan '20 - Mar '20	% Expended
	\$80,500	\$80,500	\$76,138	\$0	94.58%
<b>5. Contingency</b>					
<b>5.01 Construction Contingency</b>					
UNCOMMITTED	\$0	\$0	\$0	\$0	
	\$0	\$0	\$0	\$0	
<b>5.02 Project Contingency</b>					
UNCOMMITTED	\$1,450,000	\$0	\$0	\$0	
	\$1,450,000	\$0	\$0	\$0	0.00%
<b>Total 392-9520 Orange HS Phase II Planning and Design</b>	\$1,530,500	\$80,500	\$76,138	\$0	4.97%
<b>392-TBD Orange HS Science Center Unallocated Funds F22</b>					
<b>1. Unallocated Bond Funds</b>					
<b>1.01 Unbudgeted Bond Funds</b>					
UNCOMMITTED	\$1,520,780	\$0	\$0	\$0	
	\$1,520,780	\$0	\$0	\$0	0.00%
<b>Total 392-TBD Orange HS Science Center Unallocated Funds F22</b>	\$1,520,780	\$0	\$0	\$0	0.00%
<b>392-9520 Orange HS Unallocated Funds F21</b>					
<b>5. Program Reserve</b>					
<b>5.03 Interest Earned - Reserve</b>					
UNCOMMITTED	\$840,506	\$0	\$0	\$0	
	\$840,506	\$0	\$0	\$0	0.00%
<b>4. Construction Support Costs</b>					
<b>4.15 Miscellaneous Fees</b>					
UNCOMMITTED	\$0	\$0	\$0	\$0	
OUSD COST OF INTEREST DISTRIBUTION	\$25,457	\$25,457	\$25,457	\$0	100.00%
	\$25,457	\$25,457	\$25,457	\$0	100.00%
<b>Total 392-9520 Orange HS Unallocated Funds F21</b>	\$865,963	\$25,457	\$25,457	\$0	2.94%
<b>392-TBD Orange HS Unallocated Funds F22</b>					
<b>1. Unallocated Bond Funds</b>					
<b>1.01 Unbudgeted Bond Funds</b>					
UNCOMMITTED	\$17,978,844	\$0	\$0	\$0	
	\$17,978,844	\$0	\$0	\$0	0.00%
<b>Total 392-TBD Orange HS Unallocated Funds F22</b>	\$17,978,844	\$0	\$0	\$0	0.00%



## Measure S Bond Program

Financial Report for February 2020

### Budget vs Actuals - By School and Budget Category with Vendor Detail

QSS Data thru 2/29/2020

	Budget	Contracted to Date	Expended to Date	Quarterly Expense Jan '20 - Mar '20	% Expended
<b>Orange High School</b>	<b>\$72,865,963</b>	<b>\$40,356,735</b>	<b>\$24,180,150</b>	<b>\$4,274,638</b>	<b>33.18%</b>
<b>Villa Park High School</b>					
<b>394-0000 Villa Park HS IP Surveillance Camera and Systems</b>					
<b>1. FF&amp;E (IP Surveillance Camera)</b>					
<b>\$5000+ New Equipment</b>					
UNCOMMITTED	\$0	\$0	\$0	\$0	
CDW GOVERNMENT INC (Parts for IP Camera Systems)	\$32,182	\$32,182	\$32,182	\$0	100.00%
DIGITAL NETWORKS GROUP INC (F/I IP Camera Software)	\$8,635	\$8,635	\$8,635	\$0	100.00%
INTER-PACIFIC INC (Install IP Based Surveillance Camera System)	\$22,133	\$22,133	\$22,133	\$0	100.00%
	<b>\$62,949</b>	<b>\$62,949</b>	<b>\$62,949</b>	<b>\$0</b>	<b>100.00%</b>
<b>Total 394-0000 Villa Park HS IP Surveillance Camera and Systems</b>	<b>\$62,949</b>	<b>\$62,949</b>	<b>\$62,949</b>	<b>\$0</b>	<b>100.00%</b>
<b>394-9520 Villa Park HS Science Center (DSA 04-117022)</b>					
<b>1. Design Cost</b>					
<b>1.01 Architect</b>					
UNCOMMITTED	\$70,598	\$0	\$0	\$0	
DKS ASSOCIATES	\$78,310	\$78,310	\$66,213	\$0	84.55%
LIONAKIS	\$14,059	\$14,059	\$14,059	\$0	100.00%
LPA INC	\$2,161,858	\$2,161,858	\$1,779,192	\$61,251	82.30%
	<b>\$2,324,825</b>	<b>\$2,254,227</b>	<b>\$1,859,464</b>	<b>\$61,251</b>	<b>79.98%</b>
<b>2. Construction Cost</b>					
<b>2.01 Construction</b>					
UNCOMMITTED	\$204,748	\$0	\$0	\$0	
ACCO ENGINEERED SYSTEMS INC	\$150,829	\$150,829	\$127,947	\$0	84.83%
ANGELES CONTRACTOR, INC	\$20,231,083	\$20,231,083	\$4,391,041	\$520,285	21.70%
	<b>\$20,586,660</b>	<b>\$20,381,912</b>	<b>\$4,518,988</b>	<b>\$520,285</b>	<b>21.95%</b>
<b>3. Program and Construction Management</b>					
<b>3.01 Program Management Fees</b>					
UNCOMMITTED	\$472,911	\$0	\$0	\$0	
CORDOBA CORPORATION	\$0	\$0	\$0	\$0	
CUMMING CONSTRUCTION MGMT INC	\$682,224	\$1,155,135	\$568,029	\$30,485	83.26%
	<b>\$1,155,135</b>	<b>\$1,155,135</b>	<b>\$568,029</b>	<b>\$30,485</b>	<b>49.17%</b>
<b>3.02 Construction Management Fees</b>					
UNCOMMITTED	\$284,581	\$0	\$0	\$0	
CORDOBA CORPORATION	\$1,459,850	\$1,571,242	\$1,165,781	\$44,350	79.86%
	<b>\$1,744,430</b>	<b>\$1,571,242</b>	<b>\$1,165,781</b>	<b>\$44,350</b>	<b>66.83%</b>



## Measure S Bond Program

Financial Report for February 2020

### Budget vs Actuals - By School and Budget Category with Vendor Detail

QSS Data thru 2/29/2020

	Budget	Contracted to Date	Expended to Date	Quarterly Expense Jan '20 - Mar '20	% Expended
<b>4. Construction Support Costs</b>					
<b>4.01 Rental</b>					
UNCOMMITTED	\$34,606	\$0	\$0	\$0	
	<b>\$34,606</b>	<b>\$0</b>	<b>\$0</b>	<b>\$0</b>	<b>0.00%</b>
<b>4.02 Title, Environmental, Stormwater Management</b>					
UNCOMMITTED	\$13,840	\$0	\$0	\$0	
CHICAGO TITLE COMPANY	\$750	\$750	\$750	\$0	100.00%
OUSD COST OF INTEREST DISTRIBUTION	\$1	\$1	\$1	\$0	100.00%
PLACEWORKS INC	\$87,059	\$87,059	\$73,237	\$0	84.12%
	<b>\$101,650</b>	<b>\$87,810</b>	<b>\$73,987</b>	<b>\$0</b>	<b>72.79%</b>
<b>4.03 Commissioning</b>					
UNCOMMITTED	\$0	\$0	\$0	\$0	
P2S ENGINEERING INC	\$31,635	\$31,635	\$21,553	\$0	68.13%
	<b>\$31,635</b>	<b>\$31,635</b>	<b>\$21,553</b>	<b>\$0</b>	<b>68.13%</b>
<b>4.04 Builders Risk Insurance</b>					
UNCOMMITTED	\$0	\$0	\$0	\$0	
	<b>\$0</b>	<b>\$0</b>	<b>\$0</b>	<b>\$0</b>	
<b>4.05 DSA Review Fees</b>					
UNCOMMITTED	\$26,235	\$0	\$0	\$0	
DIVISION OF STATE ARCHITECT	\$289,250	\$289,250	\$289,250	\$0	100.00%
	<b>\$315,485</b>	<b>\$289,250</b>	<b>\$289,250</b>	<b>\$0</b>	<b>91.68%</b>
<b>4.06 Postage, Printing &amp; Advertising</b>					
UNCOMMITTED	\$27,944	\$0	\$0	\$0	
AMERICAN REPROGRAPHICS CO LLC	\$14,006	\$14,006	\$10,816	\$333	77.22%
SOUTHERN CALIFORNIA NEWS GROUP	\$1,768	\$1,768	\$1,768	\$0	100.00%
	<b>\$43,719</b>	<b>\$15,774</b>	<b>\$12,583</b>	<b>\$333</b>	<b>28.78%</b>
<b>4.07 DSA Inspection</b>					
UNCOMMITTED	\$24,947	\$0	\$0	\$0	
BPI INSPECTION SERVICE	\$318,495	\$318,495	\$102,765	\$27,880	32.27%
	<b>\$343,442</b>	<b>\$318,495</b>	<b>\$102,765</b>	<b>\$27,880</b>	<b>29.92%</b>
<b>4.08 DSA Construction Phase Testing</b>					
UNCOMMITTED	\$86,707	\$0	\$0	\$0	
NINYO & MOORE	\$258,093	\$258,093	\$137,836	\$130,107	53.41%
	<b>\$344,800</b>	<b>\$258,093</b>	<b>\$137,836</b>	<b>\$130,107</b>	<b>39.98%</b>
<b>4.09 Relocation</b>					
UNCOMMITTED	\$360	\$0	\$0	\$0	
	<b>\$360</b>	<b>\$0</b>	<b>\$0</b>	<b>\$0</b>	<b>0.00%</b>
<b>4.10 Labor Compliance</b>					
UNCOMMITTED	\$55,244	\$0	\$0	\$0	
	<b>\$55,244</b>	<b>\$0</b>	<b>\$0</b>	<b>\$0</b>	<b>0.00%</b>





**Measure S Bond Program**  
**Financial Report for February 2020**  
**Budget vs Actuals - By School and Budget Category with Vendor Detail**

QSS Data thru 2/29/2020

	Budget	Contracted to Date	Expended to Date	Quarterly Expense Jan '20 - Mar '20	% Expended
<b>4.11 Preliminary Testing (Hazmat, Topo Survey, Geo)</b>					
UNCOMMITTED	\$351,437	\$0	\$0	\$0	
CALIFORNIA GEOLOGICAL SURVEY (Geology and Seismology Review)	\$3,600	\$3,600	\$3,600	\$0	100.00%
ENVIRONMENTAL NETWORK CORPORATION	\$3,140	\$3,140	\$3,070	\$0	97.77%
LEIGHTON CONSULTING INC (Geotechnical Engineering)	\$20,000	\$20,000	\$16,549	\$0	82.75%
PSOMAS (Topographical Survey)	\$27,000	\$27,000	\$21,034	\$0	77.90%
RMA GROUP (dba SITESCAN)	\$53,125	\$53,125	\$19,100	\$0	35.95%
SPECTRUM FIRE PROTECTION (Fire Hydrant Flow Test)	\$1,000	\$1,000	\$1,000	\$0	100.00%
	<b>\$459,302</b>	<b>\$107,865</b>	<b>\$64,353</b>	<b>\$0</b>	<b>14.01%</b>
<b>4.12 Utility Connection Fees (with Local Permittin</b>					
UNCOMMITTED	\$110,004	\$0	\$0	\$0	
STATE WATER RESOURCES CONTROL BOARD (SWRCB)	\$484	\$484	\$484	\$484	100.00%
	<b>\$110,488</b>	<b>\$484</b>	<b>\$484</b>	<b>\$484</b>	<b>0.44%</b>
<b>4.13 FF&amp;E (Laboratory Tables and Chairs, other)</b>					
UNCOMMITTED	\$871,544	\$0	\$0	\$0	
CULVER-NEWLIN INC	\$12,359	\$12,359	\$12,359	\$0	100.00%
	<b>\$883,903</b>	<b>\$12,359</b>	<b>\$12,359</b>	<b>\$0</b>	<b>1.40%</b>
<b>4.14 Legal Counsel</b>					
UNCOMMITTED	\$55,244	\$0	\$0	\$0	
	<b>\$55,244</b>	<b>\$0</b>	<b>\$0</b>	<b>\$0</b>	<b>0.00%</b>
<b>5. Contingency</b>					
<b>5.01 Construction Contingency</b>					
UNCOMMITTED	\$2,335,665	\$0	\$0	\$0	
	<b>\$2,335,665</b>	<b>\$0</b>	<b>\$0</b>	<b>\$0</b>	<b>0.00%</b>
<b>5.02 Project Contingency</b>					
UNCOMMITTED	\$7,768,154	\$0	\$0	\$0	
	<b>\$7,768,154</b>	<b>\$0</b>	<b>\$0</b>	<b>\$0</b>	<b>0.00%</b>
<b>Total 394-9520 Villa Park HS Science Center (DSA 04-117022)</b>	<b>\$38,694,746</b>	<b>\$26,484,281</b>	<b>\$8,827,432</b>	<b>\$815,174</b>	<b>22.81%</b>
<b>394-9520 Villa Park HS Interim Housing (DSA 04-116788)</b>					
<b>1. Design Cost</b>					
<b>1.01 Architect</b>					
UNCOMMITTED	\$0	\$0	\$0	\$0	
LPA INC	\$70,000	\$70,000	\$70,000	\$0	100.00%
	<b>\$70,000</b>	<b>\$70,000</b>	<b>\$70,000</b>	<b>\$0</b>	<b>100.00%</b>
<b>2. Construction Cost</b>					
<b>2.01 Construction</b>					

**Measure S Bond Program**

Financial Report for February 2020

**Budget vs Actuals - By School and Budget Category with Vendor Detail**

QSS Data thru 2/29/2020

	Budget	Contracted to Date	Expended to Date	Quarterly Expense Jan '20 - Mar '20	% Expended
UNCOMMITTED	\$0	\$0	\$0	\$0	
ACCO ENGINEERED SYSTEMS INC	\$36,527	\$36,527	\$36,527	\$0	100.00%
ANGELES CONTRACTOR, INC	\$1,074,556	\$1,074,556	\$1,074,556	\$0	100.00%
	<b>\$1,111,083</b>	<b>\$1,111,083</b>	<b>\$1,111,083</b>	<b>\$0</b>	<b>100.00%</b>

**4. Construction Support Costs****4.01 Rental**

UNCOMMITTED	\$0	\$0	\$0	\$0	
ELITE MODULAR LEASING & SALES INC	\$444,082	\$444,082	\$376,482	\$123,244	84.78%
	<b>\$444,082</b>	<b>\$444,082</b>	<b>\$376,482</b>	<b>\$123,244</b>	<b>84.78%</b>

**4.05 DSA Review Fees**

UNCOMMITTED	\$0	\$0	\$0	\$0	
DIVISION OF STATE ARCHITECT	\$24,163	\$24,163	\$18,116	\$0	74.97%
	<b>\$24,163</b>	<b>\$24,163</b>	<b>\$18,116</b>	<b>\$0</b>	<b>74.97%</b>

**4.06 Postage, Printing & Advertising**

UNCOMMITTED	\$0	\$0	\$0	\$0	
	<b>\$0</b>	<b>\$0</b>	<b>\$0</b>	<b>\$0</b>	

**4.07 DSA Inspection**

UNCOMMITTED	\$0	\$0	\$0	\$0	
BPI INSPECTION SERVICE	\$43,265	\$43,265	\$43,265	\$0	100.00%
	<b>\$43,265</b>	<b>\$43,265</b>	<b>\$43,265</b>	<b>\$0</b>	<b>100.00%</b>

**4.08 DSA Construction Phase Testing**

UNCOMMITTED	\$0	\$0	\$0	\$0	
NINYO & MOORE	\$41,908	\$41,908	\$41,908	\$5,777	100.00%
	<b>\$41,908</b>	<b>\$41,908</b>	<b>\$41,908</b>	<b>\$5,777</b>	<b>100.00%</b>

**4.09 Relocation Services (Charged to District)**

UNCOMMITTED	\$0	\$0	\$0	\$0	
Beltmann Group, Inc.	\$4,640	\$4,640	\$4,640	\$0	100.00%
	<b>\$4,640</b>	<b>\$4,640</b>	<b>\$4,640</b>	<b>\$0</b>	<b>100.00%</b>

<b>Total 394-9520 Villa Park HS Interim Housing (DSA 04-116788)</b>	<b>\$1,739,140</b>	<b>\$1,739,140</b>	<b>\$1,665,493</b>	<b>\$129,021</b>	<b>95.77%</b>
---------------------------------------------------------------------	--------------------	--------------------	--------------------	------------------	---------------

**394-9520 Villa Park HS Parking and Drop Off (DSA 04-118521)****1. Design Cost****1.01 Architect**

UNCOMMITTED	\$0	\$0	\$0	\$0	
LPA INC	\$107,305	\$107,305	\$59,506	\$0	55.45%
	<b>\$107,305</b>	<b>\$107,305</b>	<b>\$59,506</b>	<b>\$0</b>	<b>55.45%</b>

**2. Construction Cost****2.01 Construction**



## Measure S Bond Program

Financial Report for February 2020

### Budget vs Actuals - By School and Budget Category with Vendor Detail

QSS Data thru 2/29/2020

	Budget	Contracted to Date	Expended to Date	Quarterly Expense Jan '20 - Mar '20	% Expended
UNCOMMITTED	\$0	\$0	\$0	\$0	
ANGELES CONTRACTOR, INC	\$2,750,000	\$2,750,000	\$0	\$0	0.00%
	<b>\$2,750,000</b>	<b>\$2,750,000</b>	<b>\$0</b>	<b>\$0</b>	<b>0.00%</b>
<b>4. Construction Support Costs</b>					
<b>4.05 DSA Review Fees</b>					
UNCOMMITTED	\$0	\$0	\$0	\$0	
DIVISION OF STATE ARCHITECT	\$37,450	\$37,450	\$37,450	\$0	100.00%
	<b>\$37,450</b>	<b>\$37,450</b>	<b>\$37,450</b>	<b>\$0</b>	<b>100.00%</b>
<b>4.06 Postage, Printing &amp; Advertising</b>					
UNCOMMITTED	\$0	\$0	\$0	\$0	
AMERICAN REPROGRAPHICS CO LLC	\$476	\$476	\$476	\$0	100.00%
	<b>\$476</b>	<b>\$476</b>	<b>\$476</b>	<b>\$0</b>	<b>100.00%</b>
<b>4.07 DSA Inspection</b>					
UNCOMMITTED	\$0	\$0	\$0	\$0	
	<b>\$0</b>	<b>\$0</b>	<b>\$0</b>	<b>\$0</b>	
<b>4.08 DSA Construction Phase Testing</b>					
UNCOMMITTED	\$0	\$0	\$0	\$0	
	<b>\$0</b>	<b>\$0</b>	<b>\$0</b>	<b>\$0</b>	
<b>Total 394-9520 Villa Park HS Parking and Drop Off (DSA 04-118521)</b>	<b>\$2,895,231</b>	<b>\$2,895,231</b>	<b>\$97,432</b>	<b>\$0</b>	<b>3.37%</b>
<b>394-9520 Villa Park HS Phase II Planning and Design</b>					
<b>1. Design Cost</b>					
<b>1.01 Architect</b>					
UNCOMMITTED	\$1,800,000	\$0	\$0	\$0	
LPA INC	\$77,000	\$77,000	\$76,000	\$0	98.70%
	<b>\$1,877,000</b>	<b>\$77,000</b>	<b>\$76,000</b>	<b>\$0</b>	<b>4.05%</b>
<b>Total 394-9520 Villa Park HS Phase II Planning and Design</b>	<b>\$1,877,000</b>	<b>\$77,000</b>	<b>\$76,000</b>	<b>\$0</b>	<b>4.05%</b>
<b>394-TBD Villa Park HS Science Center Unallocated Funds F22</b>					
<b>1. Unallocated Bond Funds</b>					
<b>1.01 Unbudgeted Bond Funds</b>					
UNCOMMITTED	\$1,870,882	\$0	\$0	\$0	
	<b>\$1,870,882</b>	<b>\$0</b>	<b>\$0</b>	<b>\$0</b>	<b>0.00%</b>
<b>Total 394-TBD Villa Park HS Science Center Unallocated Funds F22</b>	<b>\$1,870,882</b>	<b>\$0</b>	<b>\$0</b>	<b>\$0</b>	<b>0.00%</b>
<b>394-9520 Villa Park Unallocated Funds F21</b>					
<b>4. Construction Support Costs</b>					
<b>4.15 Miscellaneous Fees</b>					



## Measure S Bond Program

Financial Report for February 2020

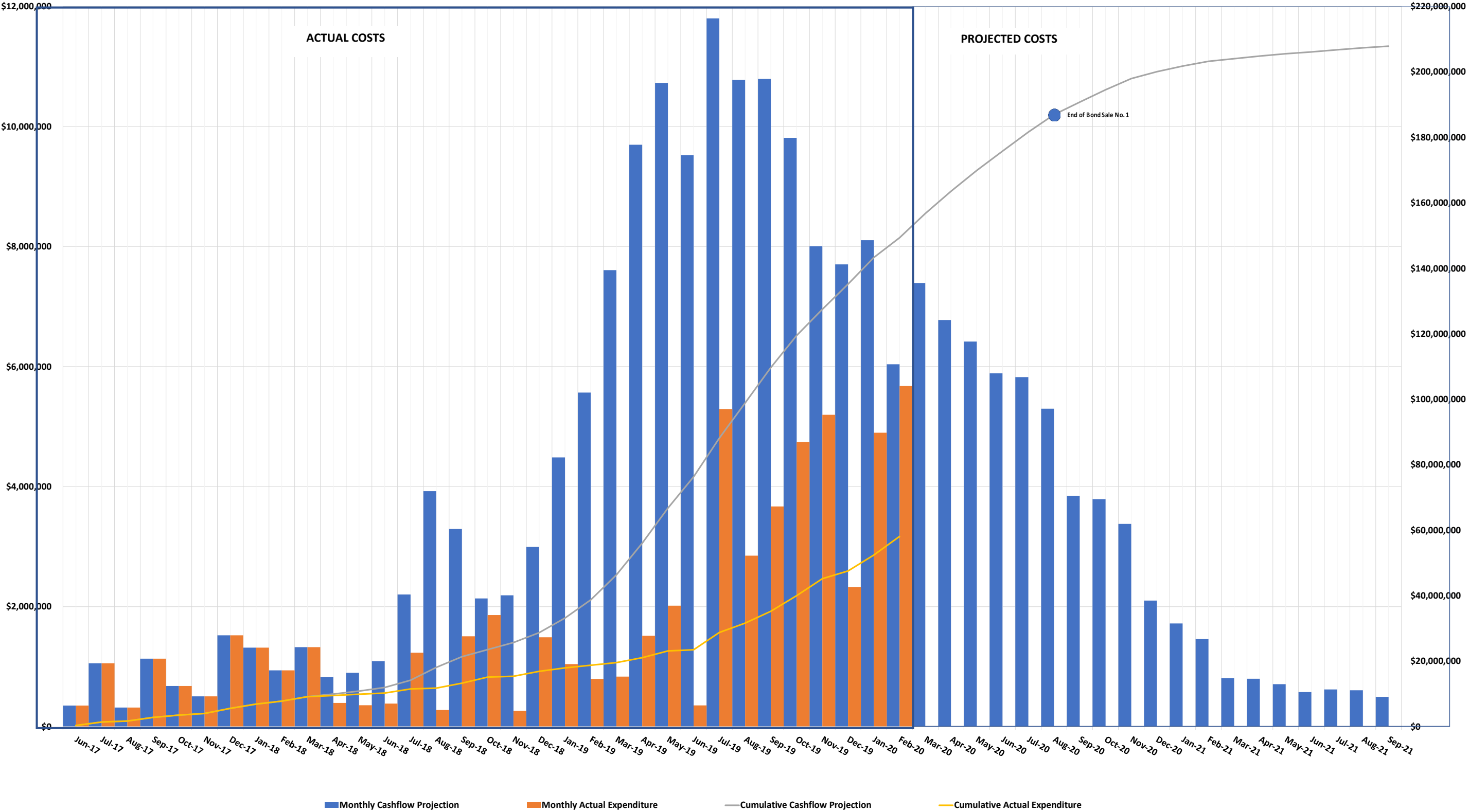
### Budget vs Actuals - By School and Budget Category with Vendor Detail

QSS Data thru 2/29/2020

	Budget	Contracted to Date	Expended to Date	Quarterly Expense Jan '20 - Mar '20	% Expended
UNCOMMITTED	\$0	\$0	\$0	\$0	
OUSD COST OF INTEREST DISTRIBUTION	\$20,426	\$20,426	\$20,426	\$0	100.00%
	<b>\$20,426</b>	<b>\$20,426</b>	<b>\$20,426</b>	<b>\$0</b>	<b>100.00%</b>
<b>5. Program Reserve</b>					
<b>5.03 Interest Earned - Reserve</b>					
UNCOMMITTED	\$678,236	\$0	\$0	\$0	
	<b>\$678,236</b>	<b>\$0</b>	<b>\$0</b>	<b>\$0</b>	<b>0.00%</b>
Total 394-9520 Villa Park Unallocated Funds F21	\$698,662	\$20,426	\$20,426	\$0	2.92%
<b>394-TBD Villa Park Unallocated Funds F22</b>					
<b>1. Unallocated Bond Funds</b>					
<b>1.01 Unbudgeted Bond Funds</b>					
UNCOMMITTED	\$24,860,051	\$0	\$0	\$0	
	<b>\$24,860,051</b>	<b>\$0</b>	<b>\$0</b>	<b>\$0</b>	<b>0.00%</b>
Total 394-TBD Villa Park Unallocated Funds F22	\$24,860,051	\$0	\$0	\$0	0.00%
Villa Park High School	\$72,698,662	\$31,279,028	\$10,749,732	\$944,195	14.79%

3.2 CASH FLOW PROJECTIONS

MEASURE S BOND PROGRAM - SCIENCE CENTER (PHASE I) CASH FLOW PROJECTION  
Actual Costs thru January 31, 2020  
Projected Costs thru September 30, 2021





## 4.0 PROGRAM SUMMARY SCHEDULE



## MEASURE S BOND PROGRAM - PHASE I: SCHEDULE SUMMARY

2016			2017												2018												2019											
4th Quarter 2016			1st Quarter 2017			2nd Quarter 2017			3rd Quarter 2017			4th Quarter 2017			1st Quarter 2018			2nd Quarter 2018			3rd Quarter 2018			4th Quarter 2018			1st Quarter 2019			2nd Quarter 2019								
Oct	Nov	Dec	Jan	Feb	Mar	Apr	May	Jun	Jul	Aug	Sep	Oct	Nov	Dec	Jan	Feb	Mar	Apr	May	Jun	Jul	Aug	Sep	Oct	Nov	Dec	Jan	Feb	Mar	Apr	May	Jun						
			BOND SALE SERIES A - \$188M																																			
			ORANGE HS - Site Infrastructure, Move Relocatable Buildings, Bus Drop-Off, Restroom Renovation & Satellite Kitchen - COMPLETED																																			
			PROGRAM PHASE			DESIGN PHASE						DSA REVIEW & APPROVAL						BID & AWARD			INFRASTRUCTURE						SATELLITE KITCHEN CONSTRUCTION						FF&E/CLOSEOUT					
			ORANGE HS - STEM Building, Medically Fragile Classrooms, New Fire Lanes																																			
			PROGRAM PHASE			DESIGN PHASE												DSA REVIEW & APPROVAL						BID & AWARD						CONSTRUCTION								
			VILLA PARK HS - STEM Building, Medically Fragile Classrooms, Interim Housing, Site Infrastructure, Stormwater Bioretention Basin																																			
			PROGRAM PHASE					DESIGN PHASE															DSA REVIEW & APPROVAL						BID & AWARD				CONSTRUCTION					
			EL MODENA HS - STEM Building, Medically Fragile Classrooms, Site Infrastructure, New Fire Lanes, Parking Lot Lighting																																			
			PROGRAM PHASE				DESIGN PHASE																DSA REVIEW & APPROVAL						BID & AWARD				CONSTRUCTION					
CANYON HS - STEM Building, Site Infrastructure, Temporary Kitchen, New Classrooms, Administration, MPR Entry, Food Service, Drop-Off Circulation,																																						
PROGRAM PHASE					DESIGN PHASE															DSA REVIEW & APPROVAL						BID & AWARD												

Villa Park HS Schematic Design & Budget Board Approved 6/8/17

Canyon HS Schematic Design & Budget Board Approved 5/25/17

El Modena HS Schematic Design & Budget Board Approved 5/11/17

Orange HS Schematic Design & Budget Board Approved 4/13/17

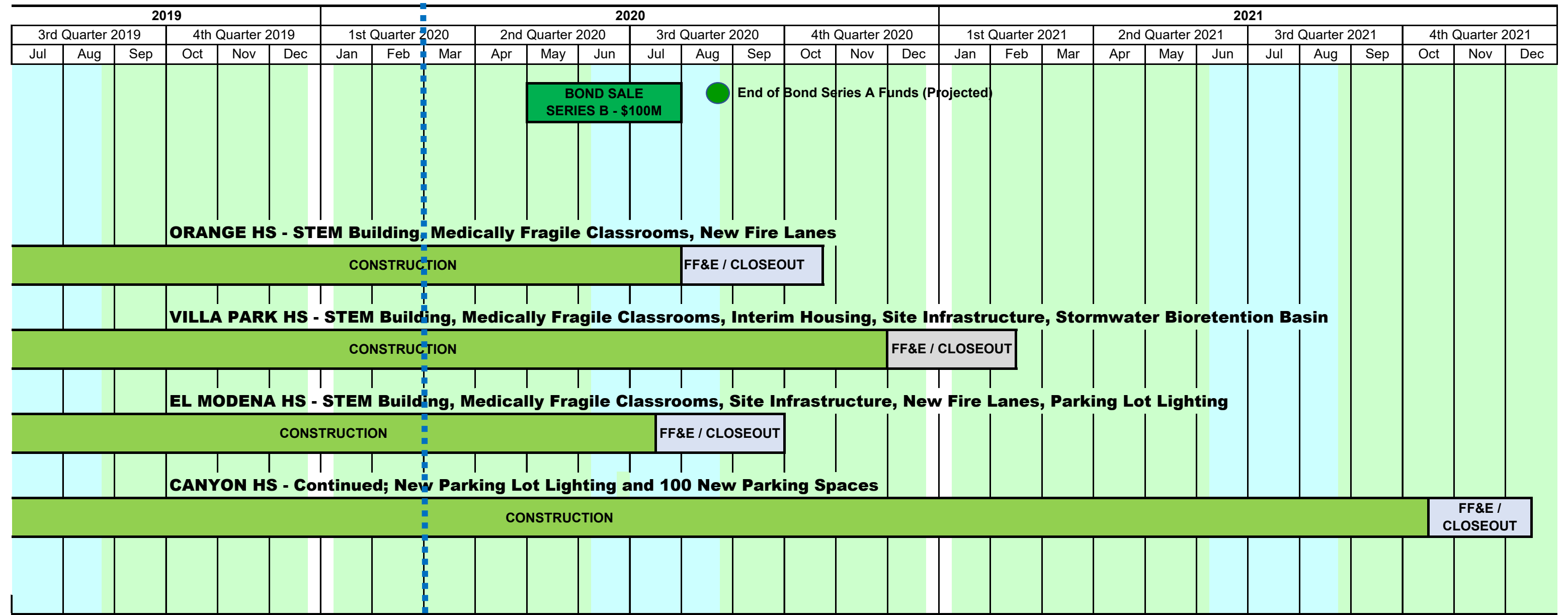
- Program Manager Starts Work 1/17/17

— Bond Measure S Passes by 62% on 11/8/16



# MEASURE S BOND PROGRAM - PHASE I: SCHEDULE SUMMARY

TODAY

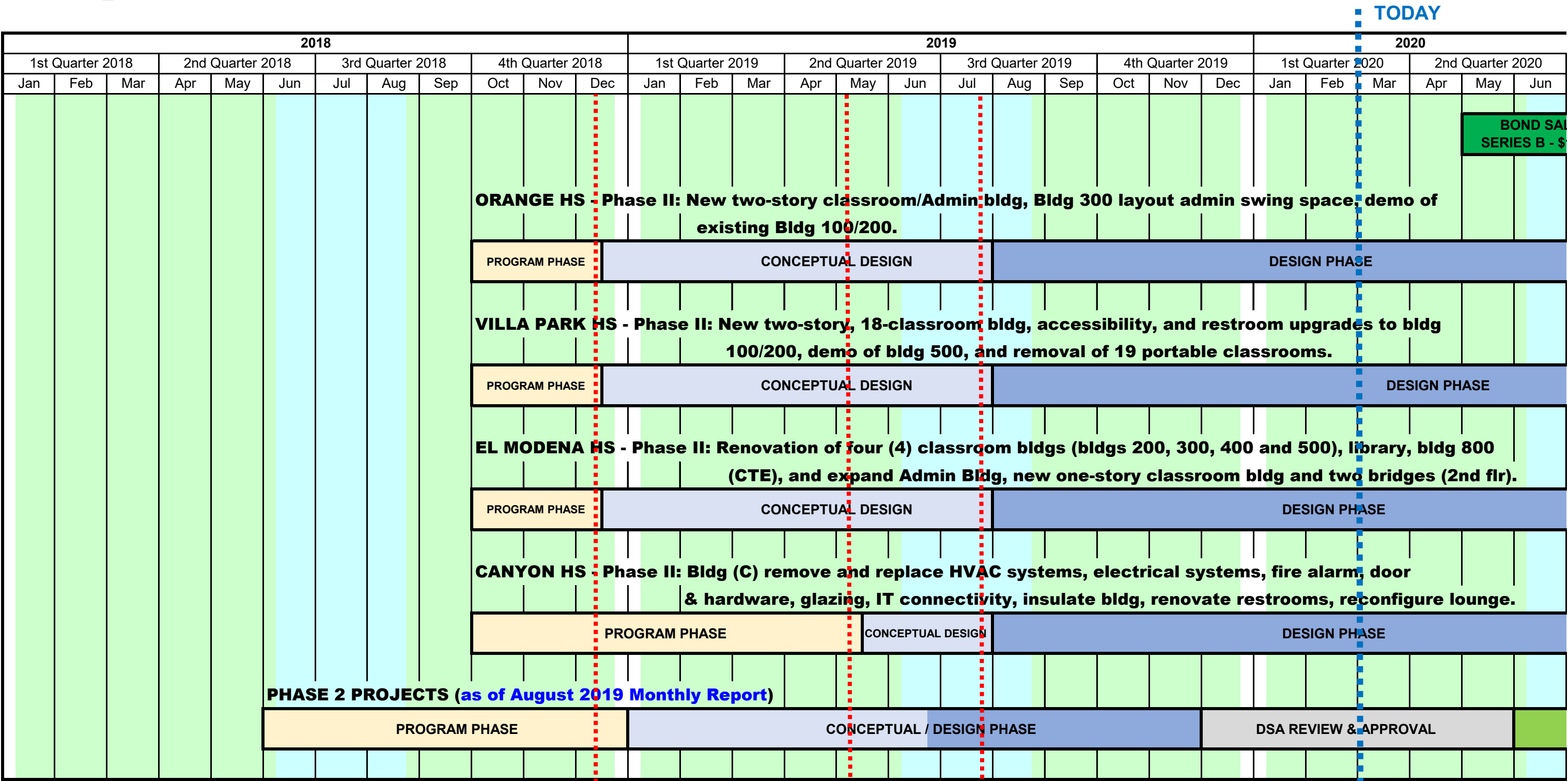


TODAY

 SUMMER BREAK



MEASURE S BOND PROGRAM - PHASE II: SCHEDULE SUMMARY




SUMMER BREAK

- Conceptual Design Board Approved 12/13/18
- Conceptual Design Board Approved 5/9/19 for Canyon HS
- Phase II Design & Budget Board Approved 7/25/19
- Orange HS
- El Modena HS
- Villa Park HS
- Canyon HS



## MEASURE S BOND PROGRAM - PHASE II SCHEDULE SUMMARY

2020						2021												2022																			
3rd Quarter 2020			4th Quarter 2020			1st Quarter 2021			2nd Quarter 2021			3rd Quarter 2021			4th Quarter 2021			1st Quarter 2022			2nd Quarter 2022			3rd Quarter 2022			4th Quarter 2022										
Jul	Aug	Sep	Oct	Nov	Dec	Jan	Feb	Mar	Apr	May	Jun	Jul	Aug	Sep	Oct	Nov	Dec	Jan	Feb	Mar	Apr	May	Jun	Jul	Aug	Sep	Oct	Nov	Dec								
LE 100M		End of Bond Series A Funds (Projected)																																			
		ORANGE HS - Phase II: New two-story classroom/Admin bldg, Bldg 300 layout admin swing space, demo of existing Bldg 100/200.																																			
DSA REVIEW & APPROVAL			BID & AWARD			CONSTRUCTION																					FF&E / CLOSEOUT										
VILLA PARK HS - Phase II: New two-story, 18-classroom bldg, accessibility, and restroom upgrades to bldg 100/200, demo of bldg 500, and removal of 19 portable classrooms.																																					
					DSA REVIEW & APPROVAL												BID & AWARD			CONSTRUCTION															FF&E		
EL MODENA HS - Phase II: Renovation of four (4) classroom bldgs (bldgs 200, 300, 400 and 500), library, bldg 800 (CTE), and expand Admin Bldg, new one-story classroom bldg and two bridges (2nd flr).																																					
		DSA REVIEW & APPROVAL							BID & AWARD			CONSTRUCTION																									
CANYON HS - Phase II: Bldg (C) remove and replace HVAC systems, electrical systems, fire alarm, door & hardware, glazing, IT connectivity, insulate bldg, renovate restrooms, reconfigure lounge.																																					
		DSA REVIEW & APPROVAL							BID & AWARD			CONSTRUCTION										FF&E / CLOSEOUT															
PHASE 2 PROJECTS (as of August 2029 Monthly Report)																																					
CONSTRUCTION (Anticipated Beyond Dec 2021)																																					

↑ Phase II Design Document & Construction Estimate Board Approval

Orange HS

El Modena HS

Villa Park HS

Canyon HS

**Board of Education**

John Ortega, President  
Kathryn A. Moffat, Vice-President  
Brenda Lebsack, Clerk  
Alexia Deligianni-Brydges, Ed. D  
Kris Erickson  
Rick Ledesma  
Andrea Yamasaki

Gunn Marie Hansen, Ph.D.

**Superintendent**

David A. Rivera

**Assistant Superintendent/CBO  
Business Services**

Scott Harvey

**Senior Executive Director  
Administrative Services**



Facilities & Planning Department  
Measure S Bond Program  
726 W. Collins Avenue  
Orange, CA 92867  
T: (714) 628-4500