



ORANGE UNIFIED SCHOOL DISTRICT

Measure S Bond Program

October 2019 Monthly Progress Report



PERIOD COVERED:
October 1-31, 2019

FISCAL YEAR
FY 2019-2020

PROGRESS REPORT NO.
PR-028-1920-028

PREPARED BY:

CUMMING
Building Value Through Expertise



TABLE OF CONTENTS

1.0 Executive Summary

- 1.1 Program Summary
- 1.2 Program Highlights/Key Milestones
- 1.3 Look Ahead (next 90 days)

2.0 Project Status Report

- Canyon HS – Science Center
- El Modena HS – Science Center
- Orange HS – Utility Infrastructure (Increment # 1)
- Orange HS – Science Center (Increment # 2)
- Villa Park HS – Interim Housing & Science Center

3.0 Financial Report

- 3.1 Project Cost Estimate
 - Budget vs Actuals with Vendor details per High School
- 3.2 Cash Flow Projections

4.0 Program Schedule Summary

- 4.1 Phase I Schedule Summary
- 4.2 Phase II Schedule Summary



1.0 EXECUTIVE SUMMARY

1.1 Program Summary

Division of State Architects (DSA) approval to establish design criteria completed as follows:

- [\(Completed\) October 24, 2019 - Villa Park HS New Parking and Drop Off \(04-118521\).](#)
- (Completed) June 25, 2019 - Orange HS Science Center Custom Tensile Fabric Shade Structures (04-118351)
- (Completed) May 2, 2019 - Canyon HS Interim Modular Kitchen (04-118418)
- (Completed) January 31, 2019 - Canyon HS Science Center (04-117300)
- (Completed) November 6, 2018 - El Modena HS Science Center (04-117098)
- (Completed) August 16, 2018 - Villa Park HS Science Center (04-117022)
- (Completed) July 12, 2018 - Orange HS Science Center (Increment # 2) (04-116859)
- (Completed) April 10, 2018 - Orange HS Increment # 1 (Satellite Kitchen) (04-116673.2)
- (Completed) March 1, 2018 - Orange HS Increment #1 (Infrastructure Upgrades, Move Relocatable Buildings, Bus Drop-Off, Restroom Renovation Project) (04-116673.1)
- (Completed) February 7, 2018 - Villa Park HS Interim Housing (DSA Application #04-116788)

Construction started / completed, as follows:

- (Construction Start - June 15, 2018 / [completed June 28, 2019](#) – Orange HS Site Infrastructure (Increment #1)
- (Construction Start) June 12, 2019 – Canyon HS Science Center
- (Construction Start) April 2, 2019 – El Modena HS Science Center
- (Construction Start) February 18, 2019 – Orange HS Science Center (Increment #2)
- (Construction Start) January 7, 2019 – Villa Park HS (Interim Housing and Science Center)

1.2 Program Highlights/Key Milestones

Phase II Measure S Bond Project Development Update:

- As of 10/31/19 the architectural contracts for each high school have completed review with Architects and are being finalized.

California Environmental Quality Act (CEQA) Compliance Achieved (as required by law):

- [Villa Park HS](#) – Notice of Exemption (Board approved on 9/20/18).
- [Canyon HS](#) – Notice of Exemption (Board approved on 7/26/18).
- [Orange HS](#) – Notice of Exemption (Board approved on 3/8/18).



- El Modena HS – Notice of Exemption (Board approved on 3/8/18).

Project Achievements:

- As of 10/24/19, DSA approval was received for the Villa Park HS New Parking Drop Off (04-118521).
- On 10/17/19, the Board approved contract Change Order # 3 in the amount of: **\$63,595.71**, at Villa Park HS IH & Science Center project for Angeles Contractor Inc. (ACI). This change order is comprised of the following proposed change order's (PCO): 12, 13, 14, 15, 16, and 17, reflecting; 0.27% of the 10% (\$2,399,700) change order contingency.
 - The total change in contract being recommended for approval is: **\$55,832.59**
 - Increases the Total contract price; **\$24,055,638.59**
 - The total change order percentage to date reflects; **0.23%**, which is within the 10% change order contingency for this project.
- As of 10/17/19, the Board approved contract Change Order # 2 in the amount of: **\$<8,127.12>**, at Villa Park HS IH & Science Center project for Angeles Contractor Inc. (ACI). This change order is comprised of the following proposed change order's (PCO): 03, 04, 05, 06, 07, and 09, reflecting; -0.03% of the 10% (\$2,399,700) change order contingency.
- As of 10/17/19, the Board approved contract amendment # 5 for Harley Ellis Devereaux (HED), design architect at the El Modena HS Science Center project, to provide additional design services to renovate the student "quad" area with landscape and new shade structures, to be compliant with all applicable ADA requirements. HED submitted a fee proposal of \$69,340, plus, an estimated reimbursable expense of \$10,000, for a total of \$79,340.
- As of 10/17/19, there was a "Steel Topping Out" ceremony held at Orange HS Science Center to commemorate this milestone achievement. The Board of Education and other local dignitaries, School Officials, staff, students and members of the project and program management and construction teams, were invited to sign the final steel beam that will be set in place at this structure.
- As of 10/2/19, a Notice of Partial Occupancy was issued to Pinner Construction for the District to accept the Custom Tensile Fabric Shade Structure (04-118351) for school use at Orange HS.

1.3 Look Ahead (next 90 days)

Board of Education Agenda

November 14th – No Measure S items needed to recommend for approval
December 19th Tentative Items:



- Recommend that the Board approved contract amendment # 2 for LPA Architects, design architect at the Villa Park HS Interim Housing & Science Center project, to provide extended construction administration services, to reflect the awarded general contract baseline project duration. LPA submitted a fee proposal of \$140,272.50, for a new contract total of \$2,461,630.50.
- Recommend that the Board approved contract Change Order # 4 in the amount of: \$5,396.99, at Villa Park HS IH & Science Center project for Angeles Contractor Inc. (ACI). This change order is comprised of proposed change order (PCO): 18, reflecting; 0.27% of the 10% (\$2,399,700) change order contingency.
 - The total change in contract being recommended for approval is: \$64,035.58
 - Increases the Total contract price; \$24,061,035.58
 - The total change order percentage to date reflects; 0.27%, which is within the 10% change order contingency for this project.

Program Wide

- Orange HS Science Center – Continue with the underground utility conduit runs, framing, and exterior construction of the new science center, to get this structure weather tight.
- Orange HS Science Center – Start the design contract for Phase II.
- Orange HS Science Center – Start the procurement outreach for the approved Furniture, Fixture and Equipment (FF & E) list.
- Canyon HS Science Center – Continue the work on the Interim kitchen and the excavation and construction of the new science center.
- Canyon HS Science Center – Start the design contract for Phase II.
- Canyon HS Science Center – Complete full installation the new kitchen equipment and kitchen shelving, tables and countertops, for the interim modular kitchen, for acceptance of use by the school.
- Canyon HS Science Center – Start the contractor installation of the kitchen equipment for the interim modular kitchen.
- Canyon HS Science Center – Start the procurement outreach for the approved Furniture, Fixture and Equipment (FF & E) list.
- El Modena HS Science Center – Continue the excavation, footings, foundations and steel erection construction of the new science center.
- El Modena HS Science Center – Start the design contract for Phase II.



- El Modena HS Science Center – Start the procurement outreach for the approved Furniture, Fixture and Equipment (FF & E) list.
- Villa Park HS Interim Housing & Science Center – Start the design contract for Phase II.
- Villa Park HS Interim Housing & Science Center – Continue the excavation, footings, foundations and steel erection construction of the new science center.
- Villa Park HS Interim Housing – Complete the DSA application (04-116788), project close out of the nine portable classrooms and one portable restroom at Villa Park HS Interim Housing.
- Villa Park HS Interim Housing & Science Center – Continue with the negotiation of the allowance price with the current general contractor, Angeles Contracting, for the new parking and drop off zone project 04-118521
- Villa Park HS Interim Housing & Science Center – Start the procurement outreach for the approved Furniture, Fixture and Equipment (FF & E) list.



2.0 PROJECT STATUS REPORT



Canyon High School
New STEM Building

CANYON HIGH SCHOOL
New STEM Building



EL MODENA SCIENCE CENTER
03.11.2017

Overall View

HED



Orange High School Science Center



AT VILLA PARK HIGH SCHOOL
03.11.2017

LPA



CANYON HS SCIENCE CENTER

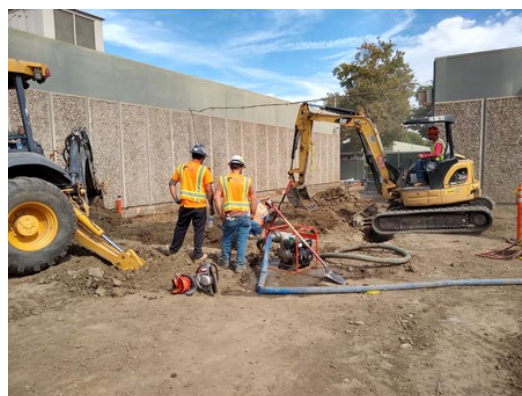
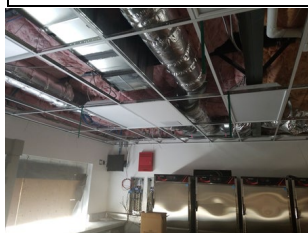
- ✓ 12 Laboratory Rooms
- ✓ 12 General Classrooms
- ✓ Student Services
- ✓ New Food Services

- ✓ New Multi-Purpose Room Entry
- ✓ Parking Lot Improvements
- ✓ Infrastructure Upgrade and Improvements
- ✓ Landscape Improvements

Project Update ([Construction](#)):

- As of 10/31/19, the temporary interim kitchen prep and site excavation and trenching continue within the new science center building footprint.
- As of 10/31/19, continuing to review the baseline schedule with Gafcon for final approval. Looking to add a new line item for the DSA number issued for the Interim Kitchen to both the schedule and the schedule of values.
- As of 10/18/19, the owner supplied kitchen equipment, tables and sinks, were installed. The new Interim Kitchen should be ready for use by October 28, 2019, based on Swinnerton's schedule.
- As of 10/09/19, to keep construction moving, the following construction directive(s) (CD) were issued;
 - CD # 10 for a not-to-exceed (NTE) price of \$3,000 to pothole outside of fence line for metal gas pipe (part of Allowance # 02).
 - CD # 09 for a not-to-exceed (NTE) price of \$3,000 to pothole at encased utility, southside of MPR (part of Allowance # 02).

[See Construction Photo's below:](#)



Left to right: Interim kitchen equipment in place, insulation and ductwork being placed in the interim kitchen, site excavation at the electric pad.



EL MODENA HS SCIENCE CENTER

- ✓ 12 Laboratory Rooms
- ✓ 1 General Classrooms
- ✓ 2 Medically Fragile Classrooms

- ✓ Relocation of Campus MDF
- ✓ Technology & Utility Upgrade
- ✓ Landscape Improvements

Project Update (**Construction**):

- As of 10/31/19, the site excavation and trenching continue within the new science center building footprint, grade beams, columns and steel construction.
- As of 10/24/19, to keep construction moving, the following construction directive (CD) was issued;
 - CD # 13 for a not-to-exceed (NTE) price of \$9,916 for various scopes under PCO 16,19,27 & 29.
 - CD # 12 for a not-to-exceed (NTE) price of \$5,000 to connect a water supply to existing 4" transite covered line.
- As of 10/24/19, processing payment applications # 5 (September) reflecting 14.6% paid overall completion, reflecting 69 days elapsed.
- On 10/17/19, The Board approved contract amendment # 5 for Harley Ellis Devereaux (HED), design architect at the El Modena HS Science Center project, to provide additional design services to renovate the student "quad" area with landscape and new shade structures, to be compliant with all applicable ADA requirements. HED submitted a fee proposal of \$69,340, plus, an estimated reimbursable expense of \$10,000, for a total of \$79,340.

[See Construction Photo's below:](#)



Left to right: Erecting steel on footings, setting rebar for grade beams and footing for concrete pour; running underground and placing vaults; running underground pipe chases in footing.



ORANGE HS UTILITY INFRASTRUCTURE

- ✓ Site Utility & Infrastructure Upgrade
 - Satellite Kitchen
 - Electrical Utility Yard

- ✓ Relocate (5) and Demolish (4) of portable classroom buildings

Project Update Increment # 1 – Site Utility Infrastructure (**CLOSE OUT**):

- As of 10/31/19, another payment application # 13 (FINAL 2019), should be submitted to process the payment of a STOP notice that was released, which was held for \$862.50.
- As of 9/4/19, the Division of State Architects (DSA) granted a Certificate of Completion for Project application number 04-116673, Orange High School Increment 1 Site Improvements, including food service building and five (5) relocatable classroom buildings.

[See Construction Photo's below:](#)



Serving window equipment in place for the Satellite Kitchen (interior)



Serving window and serving lanes in place for the Satellite Kitchen. (exterior)

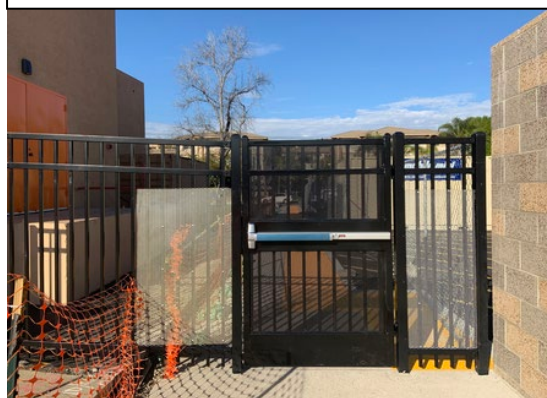


Satellite Kitchen equipment layout.

New wrought iron fencing and gates in place outside of building 100 (near bus turnout).



New wrought iron fencing gates in place at the new electrical yard.



Orange High School

"ONCE A PANTHER, ALWAYS A PANTHER"





ORANGE HS SCIENCE CENTER

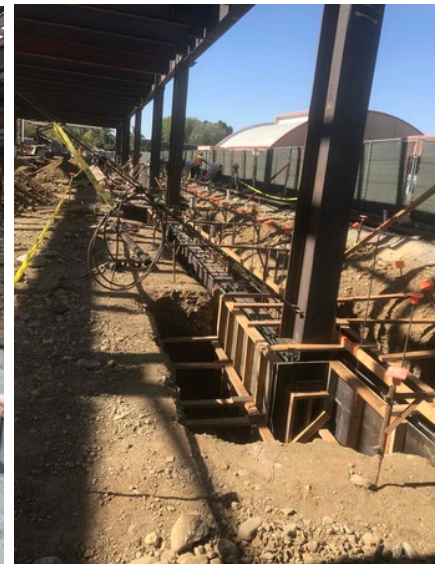
- ✓ 12 Laboratory Rooms
- ✓ 1 General Classrooms

- ✓ New Panther Pavilion Plaza
- ✓ 2 Medically Fragile Classrooms

Project Update Increment # 2 – Science Center ([Construction](#)):

- As of 10/31/19, Pinner is with routing of utility lines and HVAC ductwork on the new science center building.
- As of 10/31/19 the recovery schedule submission from Pinner is proceeding with the final review of outstanding change orders and allowances so the revised schedule can be established.
 - Balfour Beatty is continuing to work with Pinner on negotiating the outstanding proposed change orders and allowances.
- As of 10/22/19, processing payment applications # 8 (September), reflecting 23.7% paid overall completion, reflecting 125 days elapsed.
- On 10/17/19, the OUSD Board members meet at the new Satellite Kitchen location to attend a “Top-Out Steel” ceremony and signed steel orange beam.
- As of 10/10/19, to keep construction moving, the following construction directive (CD) was issued;
 - CD # 23 for a not-to-exceed (NTE) price of \$2,000 to survey the east side of the library for drainage solution (part of Allowance # 1).
- 10/02/19, A Notice of Partial Occupancy was issued to Pinner Construction for the District to accept the Custom Tensile Fabric Shade Structure (04-118351) for school use at Orange HS

[See Construction Photo's below:](#)



Left to right: Setting column foundations and grade beams being set for a concrete pour; running underground utilities and setting the vertical runs, column foundations and grade beam being set for a concrete pour.



VILLA PARK HS SCIENCE CENTER

- ✓ 12 Laboratory Rooms
- ✓ 2 General Classrooms
- ✓ 2 Medically Fragile Classrooms

- ✓ Demolish existing building 300
- ✓ Install 10 New Portable Buildings

Project Update (**Construction**):

- As of 10/31/19, Angeles is continuing with steel erection with beam footing and foundation work on the new science center building.
- As of 10/31/19, A DSA 301N was filed and issued on August 6th, 2019, for the A#04-116788 for Villa Park HS Interim Housing. Per DSA review of CCD#10, the removal of the drop off zone scope from A#04-116788 to A#04-118521 will not be approved until after DSA A#04-118521 is approved. DSA will not Certify A#04-116788 until DSA A#04-118521 has been constructed. The DSA Certification of A#04-116788 is now dependent on the Certification of A#04-118521, due to the drop off zone code requirement. The District sent a letter requesting a waiver dated September 27, 2019. DSA granted an extension until November 26, 2019, on the Interim Housing project close out of the nine portable classrooms and one portable restroom at Villa Park HS Interim Housing (04-116788). which was due to be closed without certification on October 5, 2019 (based on the 60-day timeframe).
- On 10/24/19, DSA approval was received for the new Villa Park HS New Parking and Drop Off project (04-118521). This work was included as part of the allowance, category 1, in the Science Center bid package. Cordoba has requested pricing from ACI on this allowance.
- As of 10/22/19, processing payment applications # 7 (September) reflecting 19% paid overall completion, reflecting 131 days elapsed.

[See Construction Photo's below:](#)



Left to right: Column foundations and grade beams being set after the concrete pour, structural steel beams in place, setting a new building footing.



3.0 FINANCIAL REPORT

3.1 Project Cost Estimate Summary

Measure S Bond Program

Financial Report for October 2019

QSS Data thru 10/31/2019

	Budget	Contracted to Date	Expended to Date	Quarterly Expense Oct '19 - Dec '19	% Expended
PROGRAM					
Phase 1 - HS Science Center	\$207,845,399	\$151,177,794	\$39,436,829	\$4,635,898	18.97%
Phase 2	\$83,758,504	\$637,718	\$586,856	\$1,520	0.70%
TOTAL	\$291,603,903	\$151,815,512	\$40,023,685	\$4,637,418	13.73%
Canyon High School					
Phase 1 - HS Science Center	\$69,500,000	\$47,929,249	\$7,481,531	\$1,550,026	10.76%
Phase 2	\$3,766,281	\$135,029	\$91,529	\$0	2.43%
TOTAL	\$73,266,281	\$48,064,278	\$7,573,059	\$1,550,026	10.34%
El Modena High School					
Phase 1 - HS Science Center	\$40,756,811	\$32,064,998	\$6,481,498	\$1,067,702	15.90%
Phase 2	\$32,016,186	\$134,289	\$132,289	\$0	0.41%
TOTAL	\$72,772,997	\$32,199,287	\$6,613,788	\$1,067,702	9.09%
Orange High School					
Phase 1 - HS Science Center	\$52,388,588	\$40,071,426	\$17,738,854	\$1,850,614	33.86%
Phase 2	\$20,477,375	\$208,025	\$203,663	\$0	0.99%
TOTAL	\$72,865,963	\$40,279,452	\$17,942,517	\$1,850,614	24.62%
Villa Park High School					
Phase 1 - HS Science Center	\$45,200,000	\$31,112,121	\$7,734,946	\$167,556	17.11%
Phase 2	\$27,498,662	\$160,375	\$159,375	\$1,520	0.58%
TOTAL	\$72,698,662	\$31,272,496	\$7,894,321	\$169,076	10.86%



3.1 Project Cost Estimate

Measure S Bond Program

Financial Report for October 2019

Budget vs Actuals - By School and Budget Category with Vendor Detail

QSS Data thru 10/31/2019

	Budget	Contracted to Date	Expended to Date	Quarterly Expense Oct '19 - Dec '19	% Expended
Canyon High School					
390-9520 Canyon HS Science Center (DSA 04-117300)					
1. Design Cost					
1.01 Architect					
UNCOMMITTED	\$1	\$0	\$0	\$0	
GKKWORKS CANNON DESIGN	\$3,198,930	\$3,198,930	\$2,499,750	\$0	78.14%
LIONAKIS (Program Master Specifications)	\$14,058	\$14,058	\$14,058	\$0	100.00%
	\$3,212,989	\$3,212,988	\$2,513,808	\$0	78.24%
2. Construction Cost					
2.01 Construction - Science Center					
UNCOMMITTED	\$254,465	\$0	\$0	\$0	
ACCO ENGINEERED SYSTEMS INC	\$159,986	\$159,986	\$0	\$0	0.00%
CITY OF ANAHEIM - ELECTRICAL ENGINEERING DIV	\$91,340	\$91,340	\$91,340	\$0	100.00%
SWINERTON BUILDERS	\$38,400,000	\$38,400,000	\$2,613,457	\$1,338,393	6.81%
	\$38,905,791	\$38,651,326	\$2,704,797	\$1,338,393	6.95%
3. Program and Construction Management					
3.01 Program Management Fees					
UNCOMMITTED	\$864,220	\$0	\$0	\$0	
CUMMING CONSTRUCTION MGMT INC	\$911,296	\$1,775,514	\$607,839	\$80,023	66.70%
	\$1,775,515	\$1,775,514	\$607,839	\$80,023	34.23%
3.02 Construction Management Fees					
UNCOMMITTED	\$988,878	\$0	\$0	\$0	
CORDOBA CORPORATION	\$74,438	\$74,438	\$12,615	\$0	16.95%
GAFCON INC	\$1,516,569	\$2,435,801	\$892,663	\$100,462	58.86%
	\$2,579,884	\$2,510,238	\$905,278	\$100,462	35.09%
4. Construction Support Costs					
4.01 Rental					
UNCOMMITTED	\$128,027	\$0	\$0	\$0	
	\$128,027	\$0	\$0	\$0	0.00%
4.02 Title, Environmental, Stormwater Management					
UNCOMMITTED	\$118,932	\$0	\$0	\$0	
CHICAGO TITLE COMPANY	\$750	\$750	\$750	\$0	100.00%
CITY OF ANAHEIM	\$2,000	\$2,000	\$2,000	\$0	100.00%
CITY OF ANAHEIM - WATER	\$695	\$695	\$695	\$0	100.00%
COUNTY OF ORANGE - ENVIRONMENTAL HEALTH	\$1,615	\$1,615	\$1,615	\$0	100.00%
ENVIRONMENTAL AUDIT INC	\$50,800	\$50,800	\$21,375	\$0	42.08%
OUSD COST OF INTEREST DISTRIBUTION	\$1	\$1	\$1	\$0	100.00%



Measure S Bond Program

Financial Report for October 2019

Budget vs Actuals - By School and Budget Category with Vendor Detail

QSS Data thru 10/31/2019

	Budget	Contracted to Date	Expended to Date	Quarterly Expense Oct '19 - Dec '19	% Expended
4.03 Commissioning	\$174,793	\$55,861	\$26,436	\$0	15.12%
UNCOMMITTED	\$0	\$0	\$0	\$0	
P2S ENGINEERING INC	\$49,202	\$49,202	\$15,336	\$72	31.17%
	\$49,202	\$49,202	\$15,336	\$72	31.17%
4.04 Builders Risk Insurance					
UNCOMMITTED	\$0	\$0	\$0	\$0	
	\$0	\$0	\$0	\$0	
4.05 DSA Review Fees					
UNCOMMITTED	\$270,165	\$0	\$0	\$0	
DIVISION OF STATE ARCHITECT	\$504,370	\$504,370	\$504,370	\$0	100.00%
	\$774,535	\$504,370	\$504,370	\$0	65.12%
4.06 Postage, Printing & Advertising					
UNCOMMITTED	\$59,830	\$0	\$0	\$0	
AMERICAN REPROGRAPHICS CO LLC	\$13,561	\$13,561	\$9,514	\$0	70.15%
SOUTHERN CALIFORNIA NEWS GROUP	\$2,605	\$2,605	\$2,605	\$0	100.00%
	\$75,997	\$16,167	\$12,119	\$0	15.95%
4.07 DSA Inspection					
UNCOMMITTED	\$139,851	\$0	\$0	\$0	
KNOWLAND CONSTRUCTION SERVICES	\$454,016	\$454,016	\$10,560	\$10,560	2.33%
	\$593,867	\$454,016	\$10,560	\$10,560	1.78%
4.08 DSA Construction Phase Testing					
UNCOMMITTED	\$462,291	\$0	\$0	\$0	
AMERICAN ENGINEERING LABORATORIES INC	\$185,580	\$185,580	\$0	\$0	0.00%
	\$647,871	\$185,580	\$0	\$0	0.00%
4.09 Relocation					
UNCOMMITTED	\$0	\$0	\$0	\$0	
	\$0	\$0	\$0	\$0	
4.10 Labor Compliance					
UNCOMMITTED	\$94,996	\$0	\$0	\$0	
	\$94,996	\$0	\$0	\$0	0.00%
4.11 Preliminary Testing (Hazmat, Topo Survey, Geo					
UNCOMMITTED	\$632,075	\$0	\$0	\$0	
C BELOW SUBSURFACE IMAGING (Subsurface Investigation)	\$8,445	\$8,445	\$8,445	\$0	100.00%
CALIFORNIA GEOLOGICAL SURVEY (Geology and Seismology Review)	\$3,600	\$3,600	\$3,600	\$0	100.00%
ENVIRONMENTAL NETWORK CORPORATION (Hazardous Material Investigation)	\$24,455	\$24,455	\$0	\$0	0.00%
HARRINGTON GEOTECHNICAL ENGINEERING INC (Geotechnical Soils Investigation)	\$13,500	\$13,500	\$13,500	\$0	100.00%
PROVENCER, GEORGE (dba PROVO ENGINEERING)	\$720	\$720	\$720	\$0	100.00%
RMA GROUP (dba SITESCAN)	\$26,103	\$26,103	\$26,103	\$0	100.00%

**Measure S Bond Program**

Financial Report for October 2019

Budget vs Actuals - By School and Budget Category with Vendor Detail

QSS Data thru 10/31/2019

	Budget	Contracted to Date	Expended to Date	Quarterly Expense Oct '19 - Dec '19	% Expended
XICOTENCATL ENRIQUE SALAZAR (Topographical Survey)	\$20,100	\$20,100	\$20,100	\$0	100.00%
	\$728,998	\$96,923	\$72,468	\$0	9.94%
4.12 Utility Connection Fees (with Local Permittin					
UNCOMMITTED	\$189,991	\$0	\$0	\$0	
	\$189,991	\$0	\$0	\$0	0.00%
4.13 FF&E (Laboratory Tables and Chairs, other)					
UNCOMMITTED	\$1,519,934	\$0	\$0	\$0	
	\$1,519,934	\$0	\$0	\$0	0.00%
4.14 Legal Counsel					
UNCOMMITTED	\$94,996	\$0	\$0	\$0	
	\$94,996	\$0	\$0	\$0	0.00%
5. Contingency					
5.01 Construction Contingency					
UNCOMMITTED	\$3,840,000	\$0	\$0	\$0	
	\$3,840,000	\$0	\$0	\$0	0.00%
5.02 Project Contingency					
UNCOMMITTED	\$12,992,039	\$0	\$0	\$0	
	\$12,992,039	\$0	\$0	\$0	0.00%
Total 390-9520 Canyon HS Science Center (DSA 04-117300)	\$68,379,424	\$47,512,184	\$7,373,011	\$1,529,510	10.78%
390-9520 Canyon HS Unallocated Funds F21					
4. Construction Support Costs					
4.15 Miscellaneous Fees					
UNCOMMITTED	\$0	\$0	\$0	\$0	
OUSD COST OF INTEREST DISTRIBUTION	\$36,936	\$36,936	\$36,936	\$0	100.00%
	\$36,936	\$36,936	\$36,936	\$0	100.00%
5. Program Reserve					
5.03 Interest Earned - Reserve					
UNCOMMITTED	\$1,229,345	\$0	\$0	\$0	
	\$1,229,345	\$0	\$0	\$0	0.00%
Total 390-9520 Canyon HS Unallocated Funds F21	\$1,266,281	\$36,936	\$36,936	\$0	2.92%
390-0000 Canyon HS IP Surveillance Camera and Systems					
1. FF&E (IP Surveillance Camera)					
\$5000+ New Equipment					
UNCOMMITTED	\$0	\$0	\$0	\$0	
CDW GOVERNMENT INC (Parts for IP Camera Systems)	\$29,337	\$29,337	\$29,337	\$0	100.00%



Measure S Bond Program

Financial Report for October 2019

Budget vs Actuals - By School and Budget Category with Vendor Detail

QSS Data thru 10/31/2019

	Budget	Contracted to Date	Expended to Date	Quarterly Expense Oct '19 - Dec '19	% Expended
DIGITAL NETWORKS GROUP INC (F/I IP Camera Software)	\$7,093	\$7,093	\$7,093	\$0	100.00%
INTER-PACIFIC INC (Install IP Based Surveillance Camera System)	\$18,163	\$18,163	\$18,163	\$0	100.00%
	\$54,593	\$54,593	\$54,593	\$0	100.00%
2. Contingency					
2.01 Project Contingency					
UNCOMMITTED	\$0	\$0	\$0	\$0	
	\$0	\$0	\$0	\$0	
Total 390-0000 Canyon HS IP Surveillance Camera and Systems	\$54,593	\$54,593	\$54,593	\$0	100.00%
390-9520 Canyon HS Interim Kitchen (DSA 04-118418)					
1. Design Cost					
1.01 Architect					
UNCOMMITTED	\$0	\$0	\$0	\$0	
GKKWORKS CANNON DESIGN	\$34,620	\$34,620	\$0	\$0	0.00%
	\$34,620	\$34,620	\$0	\$0	0.00%
2. Construction Cost					
2.01 Construction					
UNCOMMITTED	\$10	\$0	\$0	\$0	
E.R.E.S. ENTERPRISES INC DBA ECONOMY RESTAURANT EQUIP	\$49,721	\$49,721	\$0	\$0	0.00%
THE DICKLER CORPORATION DBA CHEFS TOYS	\$109,449	\$109,449	\$0	\$0	0.00%
	\$159,180	\$159,170	\$0	\$0	0.00%
3. Program and Construction Management					
3.01 Program Management Fees					
UNCOMMITTED	\$0	\$0	\$0	\$0	
	\$0	\$0	\$0	\$0	
3.02 Construction Management Fees					
UNCOMMITTED	\$0	\$0	\$0	\$0	
	\$0	\$0	\$0	\$0	
4. Construction Support Costs					
4.01 Rental					
UNCOMMITTED	\$0	\$0	\$0	\$0	
ELITE MODULAR LEASING & SALES INC	\$129,295	\$129,295	\$82,229	\$0	63.60%
	\$129,295	\$129,295	\$82,229	\$0	63.60%
4.02 Title, Environmental, Stormwater Management					
UNCOMMITTED	\$0	\$0	\$0	\$0	



Measure S Bond Program

Financial Report for October 2019

Budget vs Actuals - By School and Budget Category with Vendor Detail

QSS Data thru 10/31/2019

	Budget	Contracted to Date	Expended to Date	Quarterly Expense Oct '19 - Dec '19	% Expended
4.03 Commissioning	\$0	\$0	\$0	\$0	
UNCOMMITTED	\$0	\$0	\$0	\$0	
4.04 Builders Risk Insurance	\$0	\$0	\$0	\$0	
UNCOMMITTED	\$0	\$0	\$0	\$0	
4.05 DSA Review Fees	\$0	\$0	\$0	\$0	
UNCOMMITTED	\$0	\$0	\$0	\$0	
DIVISION OF STATE ARCHITECT	\$5,775	\$5,775	\$5,775	\$0	100.00%
	\$5,775	\$5,775	\$5,775	\$0	100.00%
4.06 Postage, Printing & Advertising	\$0	\$0	\$0	\$0	
UNCOMMITTED	\$0	\$0	\$0	\$0	
4.07 DSA Inspection	\$0	\$0	\$0	\$0	
UNCOMMITTED	\$0	\$0	\$0	\$0	
KNOWLAND CONSTRUCTION SERVICES	\$71,104	\$71,104	\$11,968	\$11,968	16.83%
	\$71,104	\$71,104	\$11,968	\$11,968	16.83%
4.08 DSA Construction Phase Testing	\$0	\$0	\$0	\$0	
UNCOMMITTED	\$0	\$0	\$0	\$0	
AMERICAN ENGINEERING LABORATORIES INC	\$17,100	\$17,100	\$8,548	\$8,548	49.99%
	\$17,100	\$17,100	\$8,548	\$8,548	49.99%
Total 390-9520 Canyon HS Interim Kitchen (DSA 04-118418)	\$417,074	\$417,065	\$108,520	\$20,516	26.02%
390-9520 Canyon HS Phase II Planning and Design					
1. Design Cost					
1.01 Architect-Engineering Fees					
UNCOMMITTED	\$0	\$0	\$0	\$0	
GKKWORKS CANNON DESIGN	\$43,500	\$43,500	\$0	\$0	0.00%
	\$43,500	\$43,500	\$0	\$0	0.00%
1.02 AE Design Contingency					
UNCOMMITTED	\$0	\$0	\$0	\$0	
	\$0	\$0	\$0	\$0	
5. Contingency					
5.01 Construction Contingency					
UNCOMMITTED	\$0	\$0	\$0	\$0	
	\$0	\$0	\$0	\$0	
5.02 Project Contingency					
UNCOMMITTED	\$664,000	\$0	\$0	\$0	

**Measure S Bond Program**

Financial Report for October 2019

Budget vs Actuals - By School and Budget Category with Vendor Detail

QSS Data thru 10/31/2019

	Budget	Contracted to Date	Expended to Date	Quarterly Expense Oct '19 - Dec '19	% Expended
	\$664,000	\$0	\$0	\$0	0.00%
Total 390-9520 Canyon HS Phase II Planning and Design	\$707,500	\$43,500	\$0	\$0	0.00%
390-TBD Canyon HS Science Center Unallocated Funds F22					
1. Unallocated Bond Funds					
1.01 Unbudgeted Bond Funds					
UNCOMMITTED	\$703,502	\$0	\$0	\$0	
	\$703,502	\$0	\$0	\$0	0.00%
Total 390-TBD Canyon HS Science Center Unallocated Funds F22	\$703,502	\$0	\$0	\$0	0.00%
390-TBD Canyon HS Unallocated Funds F22					
1. Unallocated Bond Funds					
1.01 Unbudgeted Bond Funds					
UNCOMMITTED	\$1,737,907	\$0	\$0	\$0	
	\$1,737,907	\$0	\$0	\$0	0.00%
Total 390-TBD Canyon HS Unallocated Funds F22	\$1,737,907	\$0	\$0	\$0	0.00%
Canyon High School	\$73,266,281	\$48,064,278	\$7,573,059	\$1,550,026	10.34%
El Modena High School					
391-0000 El Modena HS IP Surveillance Camera and Systems					
1. FF&E (IP Surveillance Camera)					
5000+ New Equipment					
UNCOMMITTED	\$0	\$0	\$0	\$0	
CDW GOVERNMENT INC (Parts for IP Camera Systems)	\$39,388	\$39,388	\$39,388	\$0	100.00%
DIGITAL NETWORKS GROUP INC (F/I IP Camera Software)	\$11,719	\$11,719	\$11,719	\$0	100.00%
INTER-PACIFIC INC (Install IP Based Surveillance Camera System)	\$30,073	\$30,073	\$30,073	\$0	100.00%
	\$81,179	\$81,179	\$81,179	\$0	100.00%
2. Contingency					
2.01 Project Contingency					
UNCOMMITTED	\$0	\$0	\$0	\$0	
	\$0	\$0	\$0	\$0	
Total 391-0000 El Modena HS IP Surveillance Camera and Systems	\$81,179	\$81,179	\$81,179	\$0	100.00%
391-9520 El Modena HS Phase II Planning and Design					
1. Design Cost					
1.01 Architect					



Measure S Bond Program

Financial Report for October 2019

Budget vs Actuals - By School and Budget Category with Vendor Detail

QSS Data thru 10/31/2019

	Budget	Contracted to Date	Expended to Date	Quarterly Expense Oct '19 - Dec '19	% Expended
UNCOMMITTED	\$625	\$0	\$0	\$0	
HARLEY ELLIS DEVEREAUX	\$30,560	\$30,560	\$28,560	\$0	93.46%
	\$31,185	\$30,560	\$28,560	\$0	91.58%

5. Contingency

5.01 Construction Contingency

UNCOMMITTED	\$0	\$0	\$0	\$0	
	\$0	\$0	\$0	\$0	

5.02 Project Contingency

UNCOMMITTED	\$1,799,375	\$0	\$0	\$0	
	\$1,799,375	\$0	\$0	\$0	0.00%

Total 391-9520 El Modena HS Phase II Planning and Design	\$1,830,560	\$30,560	\$28,560	\$0	1.56%
--	-------------	----------	----------	-----	-------

391-9520 El Modena HS Science Center (DSA 04-117098)

1. Design Cost

1.01 Architect

UNCOMMITTED	\$79,340	\$0	\$0	\$0	
HARLEY ELLIS DEVEREAUX	\$1,954,014	\$2,033,354	\$1,575,018	\$96,895	80.60%
LIONAKIS (Program Master Specifications)	\$14,059	\$14,059	\$14,059	\$0	100.00%
	\$2,047,413	\$2,047,413	\$1,589,077	\$96,895	77.61%

2. Construction Cost

2.01 Construction - Science Center

UNCOMMITTED	\$56,979	\$0	\$0	\$0	
ACCO ENGINEERED SYSTEMS INC	\$355,544	\$355,544	\$0	\$0	0.00%
ANGELES CONTRACTOR, INC	\$25,818,000	\$25,818,000	\$3,074,167	\$854,565	11.91%
FAIR PLAY SCOREBOARDS	\$17,694	\$17,694	\$0	\$0	0.00%
	\$26,248,217	\$26,191,238	\$3,074,167	\$854,565	11.71%

3. Program and Construction Management

3.01 Program Management Fees

UNCOMMITTED	\$404,276	\$0	\$0	\$0	
CUMMING CONSTRUCTION MGMT INC	\$622,509	\$1,026,785	\$462,984	\$40,011	74.37%
	\$1,026,785	\$1,026,785	\$462,984	\$40,011	45.09%

3.02 Construction Management Fees

UNCOMMITTED	\$337,187	\$0	\$0	\$0	
ARCADIS U.S. INC	\$1,449,615	\$1,687,554	\$866,064	\$45,975	59.74%
CORDOBA CORPORATION	\$74,438	\$74,438	\$15,588	\$0	20.94%
	\$1,861,240	\$1,761,991	\$881,652	\$45,975	47.37%

4. Construction Support Costs

**Measure S Bond Program**

Financial Report for October 2019

Budget vs Actuals - By School and Budget Category with Vendor Detail

QSS Data thru 10/31/2019

	Budget	Contracted to Date	Expended to Date	Quarterly Expense Oct '19 - Dec '19	% Expended
4.01 Rental					
UNCOMMITTED	\$0	\$0	\$0	\$0	
	\$0	\$0	\$0	\$0	
4.02 Title, Environmental, Stormwater Management					
UNCOMMITTED	\$84,517	\$0	\$0	\$0	
CHICAGO TITLE COMPANY	\$1,500	\$1,500	\$1,500	\$0	100.00%
CITY OF ORANGE (PUBLIC WORKS)	\$71	\$71	\$71	\$0	100.00%
CITY OF ORANGE (WATER DIVISION)	\$16,048	\$16,048	\$16,048	\$0	100.00%
ENVIRONMENTAL AUDIT INC	\$10,950	\$10,950	\$8,548	\$0	78.06%
OUSD COST OF INTEREST DISTRIBUTION	\$1	\$1	\$1	\$0	100.00%
	\$113,087	\$28,570	\$26,167	\$0	23.14%
4.03 Commissioning					
UNCOMMITTED	\$0	\$0	\$0	\$0	
P2S ENGINEERING INC	\$30,558	\$30,558	\$14,776	\$1,185	48.35%
	\$30,558	\$30,558	\$14,776	\$1,185	48.35%
4.04 Builders Risk Insurance					
UNCOMMITTED	\$0	\$0	\$0	\$0	
	\$0	\$0	\$0	\$0	
4.05 DSA Review Fees					
UNCOMMITTED	\$184,379	\$0	\$0	\$0	
DIVISION OF STATE ARCHITECT	\$306,338	\$306,338	\$306,338	\$0	100.00%
	\$490,717	\$306,338	\$306,338	\$0	62.43%
4.06 Postage, Printing & Advertising					
UNCOMMITTED	\$27,496	\$0	\$0	\$0	
AMERICAN REPROGRAPHICS CO LLC	\$19,648	\$19,648	\$15,648	\$0	79.64%
SOUTHERN CALIFORNIA NEWS GROUP	\$2,024	\$2,024	\$2,024	\$0	100.00%
	\$49,168	\$21,672	\$17,672	\$0	35.94%
4.07 DSA Inspection					
UNCOMMITTED	\$191,367	\$0	\$0	\$0	
BPI INSPECTION SERVICE	\$238,850	\$238,850	\$49,130	\$29,070	20.57%
	\$430,217	\$238,850	\$49,130	\$29,070	11.42%
4.08 DSA Construction Phase Testing					
UNCOMMITTED	\$106,934	\$0	\$0	\$0	
KOURY ENGINEERING & TESTING INC (Geotechnical Engineering)	\$323,283	\$323,283	\$4,628	\$0	1.43%
	\$430,217	\$323,283	\$4,628	\$0	1.08%
4.09 Relocation					
UNCOMMITTED	\$0	\$0	\$0	\$0	
	\$0	\$0	\$0	\$0	
4.10 Labor Compliance					
UNCOMMITTED	\$61,460	\$0	\$0	\$0	



Measure S Bond Program

Financial Report for October 2019

Budget vs Actuals - By School and Budget Category with Vendor Detail

QSS Data thru 10/31/2019

	Budget	Contracted to Date	Expended to Date	Quarterly Expense Oct '19 - Dec '19	% Expended
	\$61,460	\$0	\$0	\$0	0.00%
4.11 Preliminary Testing (Hazmat, Topo Survey, Geo					
UNCOMMITTED	\$402,824	\$0	\$0	\$0	
ALLEGIAN FIRE PROTECTION INC	\$525	\$525	\$525	\$0	100.00%
CALIFORNIA GEOLOGICAL SURVEY (Geology and Seismology Review)	\$3,600	\$3,600	\$3,600	\$0	100.00%
ENVIRONMENTAL NETWORK CORPORATION (Hazardous Material	\$3,412	\$3,412	\$0	\$0	0.00%
HARLEY ELLIS DEVEREAUX	\$14,908	\$14,908	\$14,908	\$0	100.00%
NINYO & MOORE	\$29,981	\$29,981	\$0	\$0	0.00%
PCA ARBORISTS & CONSULTANTS INC	\$1,569	\$1,569	\$1,569	\$0	100.00%
THE CONVERSE PROFESSIONAL GROUP (Soils Investigation)	\$30,640	\$30,640	\$30,640	\$0	100.00%
	\$487,459	\$84,635	\$51,242	\$0	10.51%
4.12 Utility Connection Fees (with Local Permittin					
UNCOMMITTED	\$119,254	\$0	\$0	\$0	
SOUTHERN CALIFORNIA EDISON	\$3,665	\$3,665	\$3,665	\$0	100.00%
	\$122,919	\$3,665	\$3,665	\$0	2.98%
4.13 FF&E (Laboratory Tables and Chairs, other)					
UNCOMMITTED	\$983,354	\$0	\$0	\$0	
	\$983,354	\$0	\$0	\$0	0.00%
4.14 Legal Counsel					
UNCOMMITTED	\$61,460	\$0	\$0	\$0	
	\$61,460	\$0	\$0	\$0	0.00%
4.15 Miscellaneous Fees					
UNCOMMITTED	\$0	\$0	\$0	\$0	
	\$0	\$0	\$0	\$0	
5. Contingency					
5.01 Construction Contingency					
UNCOMMITTED	\$2,581,800	\$0	\$0	\$0	
	\$2,581,800	\$0	\$0	\$0	0.00%
5.02 Project Contingency					
UNCOMMITTED	\$1,906,750	\$0	\$0	\$0	
ARCADIS U.S. INC	\$0	\$0	\$0	\$0	
	\$1,906,750	\$0	\$0	\$0	0.00%
Total 391-9520 El Modena HS Science Center (DSA 04-117098)	\$38,932,821	\$32,064,998	\$6,481,498	\$1,067,702	16.65%
391-TBD El Modena HS Science Center Unallocated Funds F22					
1. Unallocated Bond Funds					
1.01 Unbudgeted Bond Funds					
UNCOMMITTED	\$1,823,990	\$0	\$0	\$0	
	\$1,823,990	\$0	\$0	\$0	0.00%



Measure S Bond Program

Financial Report for October 2019

Budget vs Actuals - By School and Budget Category with Vendor Detail

QSS Data thru 10/31/2019

	Budget	Contracted to Date	Expended to Date	Quarterly Expense Oct '19 - Dec '19	% Expended
Total 391-TBD El Modena HS Science Center Unallocated Funds F22	\$1,823,990	\$0	\$0	\$0	0.00%
391-9520 El Modena HS Unallocated Funds F21					
4. Construction Support Costs					
4.15 Miscellaneous Fees					
UNCOMMITTED	\$0	\$0	\$0	\$0	
OUSD COST OF INTEREST DISTRIBUTION	\$22,550	\$22,550	\$22,550	\$0	100.00%
	\$22,550	\$22,550	\$22,550	\$0	100.00%
5. Program Reserve					
5.03 Interest Earned - Reserve					
UNCOMMITTED	\$750,447	\$0	\$0	\$0	
	\$750,447	\$0	\$0	\$0	0.00%
Total 391-9520 El Modena HS Unallocated Funds F21	\$772,997	\$22,550	\$22,550	\$0	2.92%
391-TBD El Modena HS Unallocated Funds F22					
1. Unallocated Bond Funds					
1.01 Unbudgeted Bond Funds					
UNCOMMITTED	\$29,331,450	\$0	\$0	\$0	
	\$29,331,450	\$0	\$0	\$0	0.00%
Total 391-TBD El Modena HS Unallocated Funds F22	\$29,331,450	\$0	\$0	\$0	0.00%
El Modena High School	\$72,772,997	\$32,199,287	\$6,613,788	\$1,067,702	9.09%
Orange High School					
392-0000 Orange HS IP Surveillance Camera and Systems					
1. FF&E (IP Surveillance Camera)					
\$5000+ New Equipment					
UNCOMMITTED	\$0	\$0	\$0	\$0	
CDW GOVERNMENT INC (Parts for IP Camera Systems)	\$53,662	\$53,662	\$53,662	\$0	100.00%
DIGITAL NETWORKS GROUP INC (F/I IP Camera Software)	\$13,569	\$13,569	\$13,569	\$0	100.00%
INTER-PACIFIC INC (Install IP Based Surveillance Camera System)	\$34,837	\$34,837	\$34,837	\$0	100.00%
	\$102,068	\$102,068	\$102,068	\$0	100.00%
2. Contingency					
2.01 Project Contingency					
UNCOMMITTED	\$0	\$0	\$0	\$0	
	\$0	\$0	\$0	\$0	
Total 392-0000 Orange HS IP Surveillance Camera and Systems	\$102,068	\$102,068	\$102,068	\$0	100.00%
392-9520 Orange HS Science Bldg (DSA 04-116859)					



Measure S Bond Program

Financial Report for October 2019

Budget vs Actuals - By School and Budget Category with Vendor Detail

QSS Data thru 10/31/2019

	Budget	Contracted to Date	Expended to Date	Quarterly Expense Oct '19 - Dec '19	% Expended
1. Design Cost					
1.01 Architect					
UNCOMMITTED	\$563	\$0	\$0	\$0	
LIONAKIS (Program Master Specifications)	\$1,871,513	\$1,871,513	\$1,482,385	\$0	79.21%
	\$1,872,076	\$1,871,513	\$1,482,385	\$0	79.18%
2. Construction Cost					
2.01 Construction - Science Center					
UNCOMMITTED	\$0	\$0	\$0	\$0	
ACCO ENGINEERED SYSTEMS INC	\$62,883	\$62,883	\$51,675	\$0	82.18%
CITY OF ORANGE (PUBLIC WORKS)	\$2,000	\$2,000	\$2,000	\$0	100.00%
GIANNELLI ELECTRIC INC	\$39,198	\$39,198	\$39,198	\$0	100.00%
GRUETT TREE CO INC (Removal of Trees)	\$7,625	\$7,625	\$7,625	\$0	100.00%
INTEGRATED DEMOLITION AND REMEDIATION (Abatement and	\$44,800	\$44,800	\$44,800	\$0	100.00%
J & A FENCE (Custodial Storage Fencing)	\$6,885	\$6,885	\$6,885	\$0	100.00%
KYA SERVICES LLC (Install Carpet)	\$0	\$0	\$0	\$0	
OLESH, KEITH (Termite Services)	\$1,500	\$1,500	\$1,500	\$0	100.00%
PINNER CONSTRUCTION	\$25,982,984	\$25,982,984	\$6,089,945	\$1,659,765	23.44%
SOUTHERN CALIFORNIA NEWS GROUP	\$0	\$0	\$0	\$0	
TIME & ALARM SYSTEMS	\$3,100	\$3,100	\$3,100	\$0	100.00%
TRIMARK RAYGAL LLC	\$0	\$0	\$0	\$0	
UNIVERSAL ASPHALT CO (Remove and Patch Asphalt)	\$6,830	\$6,830	\$6,830	\$0	100.00%
VORTEX INDUSTRIES, INC.	\$6,804	\$6,804	\$6,804	\$0	100.00%
	\$26,164,609	\$26,164,608	\$6,260,361	\$1,659,765	23.93%
3. Program and Construction Management					
3.01 Program Management Fees					
UNCOMMITTED	\$589,297	\$0	\$0	\$0	
CUMMING CONSTRUCTION MGMT INC	\$749,191	\$1,338,488	\$530,030	\$55,571	70.75%
	\$1,338,488	\$1,338,488	\$530,030	\$55,571	39.60%
3.02 Construction Management Fees					
UNCOMMITTED	\$1	\$0	\$0	\$0	
BALFOUR BEATTY CONSTRUCTION	\$1,657,500	\$1,657,501	\$1,124,503	\$60,783	67.84%
CORDOBA CORPORATION	\$74,438	\$74,438	\$11,165	\$0	15.00%
	\$1,731,938	\$1,731,938	\$1,135,668	\$60,783	65.57%
4. Construction Support Costs					
4.01 Rental					
UNCOMMITTED	\$0	\$0	\$0	\$0	
	\$0	\$0	\$0	\$0	
4.02 Title, Environmental, Stormwater Management					
UNCOMMITTED	\$94,772	\$0	\$0	\$0	

**Measure S Bond Program**

Financial Report for October 2019

Budget vs Actuals - By School and Budget Category with Vendor Detail

QSS Data thru 10/31/2019

	Budget	Contracted to Date	Expended to Date	Quarterly Expense Oct '19 - Dec '19	% Expended
CHICAGO TITLE COMPANY	\$1,500	\$1,500	\$1,500	\$0	100.00%
OUSD COST OF INTEREST DISTRIBUTION	\$1	\$1	\$1	\$0	100.00%
PLACEWORKS INC	\$52,231	\$52,231	\$52,231	\$0	100.00%
STATE WATER RESOURCES CONTROL BOARD (SWRCB)	\$726	\$726	\$726	\$0	100.00%
	\$149,230	\$54,458	\$54,458	\$0	36.49%
4.03 Commissioning					
UNCOMMITTED	\$0	\$0	\$0	\$0	
P2S ENGINEERING INC	\$30,585	\$30,585	\$15,118	\$684	49.43%
	\$30,585	\$30,585	\$15,118	\$684	49.43%
4.04 Builders Risk Insurance					
UNCOMMITTED	\$0	\$0	\$0	\$0	
	\$0	\$0	\$0	\$0	
4.05 DSA Review Fees					
UNCOMMITTED	\$172,987	\$0	\$0	\$0	
DIVISION OF STATE ARCHITECT	\$252,750	\$252,750	\$252,750	\$0	100.00%
OUSD REVOLVING CASH	\$500	\$500	\$500	\$0	100.00%
	\$426,237	\$253,250	\$253,250	\$0	59.42%
4.06 Postage, Printing & Advertising					
UNCOMMITTED	\$36,302	\$0	\$0	\$0	
AMERICAN REPROGRAPHICS CO LLC	\$11,807	\$11,807	\$8,403	\$172	71.17%
SOUTHERN CALIFORNIA NEWS GROUP	\$8,518	\$8,518	\$8,518	\$0	100.00%
	\$56,626	\$20,325	\$16,920	\$172	29.88%
4.07 DSA Inspection					
UNCOMMITTED	\$145,585	\$0	\$0	\$0	
KNOWLAND CONSTRUCTION SERVICES	\$323,247	\$323,247	\$75,690	\$0	23.42%
	\$468,832	\$323,247	\$75,690	\$0	16.14%
4.08 DSA Construction Phase Testing					
UNCOMMITTED	\$125,025	\$0	\$0	\$0	
NINYO & MOORE	\$335,032	\$335,032	\$39,991	\$0	11.94%
	\$460,057	\$335,032	\$39,991	\$0	8.69%
4.09 Relocation					
UNCOMMITTED	\$0	\$0	\$0	\$0	
	\$0	\$0	\$0	\$0	
4.10 Labor Compliance					
UNCOMMITTED	\$81,902	\$0	\$0	\$0	
	\$81,902	\$0	\$0	\$0	0.00%
4.11 Preliminary Testing (Hazmat, Topo Survey, Geo)					
UNCOMMITTED	\$580,704	\$0	\$0	\$0	
CALIFORNIA GEOLOGICAL SURVEY (Geology and Seismology Review)	\$3,600	\$3,600	\$3,600	\$0	100.00%
KOURY ENGINEERING & TESTING INC (Geotechnical Engineering)	\$13,300	\$13,300	\$13,300	\$0	100.00%
PENCO ENGINEERING INC (Topographical Survey Services)	\$42,350	\$42,350	\$41,070	\$0	96.98%

**Measure S Bond Program**

Financial Report for October 2019

Budget vs Actuals - By School and Budget Category with Vendor Detail

QSS Data thru 10/31/2019

	Budget	Contracted to Date	Expended to Date	Quarterly Expense Oct '19 - Dec '19	% Expended
RMA GROUP (dba SITESCAN)	\$49,533	\$49,533	\$49,533	\$0	100.00%
	\$689,487	\$108,783	\$107,503	\$0	15.59%
4.12 Utility Connection Fees (with Local Permittin					
UNCOMMITTED	\$154,391	\$0	\$0	\$0	
CITY OF ORANGE (PUBLIC WORKS)	\$2,500	\$2,500	\$2,500	\$0	100.00%
SOUTHERN CALIFORNIA EDISON	\$6,912	\$6,912	\$6,912	\$0	100.00%
	\$163,803	\$9,412	\$9,412	\$0	5.75%
4.13 FF&E (Laboratory Tables and Chairs, other)					
UNCOMMITTED	\$1,300,962	\$0	\$0	\$0	
CONEXWEST	\$9,466	\$9,466	\$9,419	\$0	99.51%
VORTEX INDUSTRIES, INC.	\$0	\$0	\$0	\$0	
	\$1,310,428	\$9,466	\$9,419	\$0	0.72%
4.14 Legal Counsel					
UNCOMMITTED	\$81,902	\$0	\$0	\$0	
	\$81,902	\$0	\$0	\$0	0.00%
4.15 Miscellaneous Fees					
UNCOMMITTED	\$0	\$0	\$0	\$0	
	\$0	\$0	\$0	\$0	
5. Contingency					
5.01 Construction Contingency					
UNCOMMITTED	\$2,610,900	\$0	\$0	\$0	
	\$2,610,900	\$0	\$0	\$0	0.00%
5.02 Project Contingency					
UNCOMMITTED	\$5,096,483	\$0	\$0	\$0	
	\$5,096,483	\$0	\$0	\$0	0.00%
Total 392-9520 Orange HS Science Bldg (DSA 04-116859)	\$42,733,583	\$32,251,104	\$9,990,205	\$1,776,976	23.38%
392-9520 Orange HS Shade Structure (DSA 04-118351)					
1. Design Cost					
1.01 Architect Engineering					
UNCOMMITTED	\$0	\$0	\$0	\$0	
	\$0	\$0	\$0	\$0	
2. Construction Cost					
2.01 Construction					
UNCOMMITTED	\$0	\$0	\$0	\$0	
PINNER CONSTRUCTION	\$126,016	\$126,016	\$88,267	\$72,719	70.04%
	\$126,016	\$126,016	\$88,267	\$72,719	70.04%
4. Construction Support Costs					



Measure S Bond Program

Financial Report for October 2019

Budget vs Actuals - By School and Budget Category with Vendor Detail

QSS Data thru 10/31/2019

	Budget	Contracted to Date	Expended to Date	Quarterly Expense Oct '19 - Dec '19	% Expended
4.03 Commissioning					
UNCOMMITTED	\$0	\$0	\$0	\$0	
	\$0	\$0	\$0	\$0	
4.05 DSA Review Fees					
UNCOMMITTED	\$0	\$0	\$0	\$0	
DIVISION OF STATE ARCHITECT	\$1,711	\$1,711	\$1,711	\$0	100.00%
	\$1,711	\$1,711	\$1,711	\$0	100.00%
Total 392-9520 Orange HS Shade Structure (DSA 04-118351)	\$127,727	\$127,727	\$89,978	\$72,719	70.45%
392-9520 Orange HS Site Improvements (DSA 04-116673)					
1. Design Cost					
1.01 Architect					
UNCOMMITTED	\$0	\$0	\$0	\$0	
LIONAKIS (Program Master Specifications)	\$450,189	\$450,189	\$440,430	\$0	97.83%
SILVER CREEK INDUSTRIES INC (Engineering for Warming Kitchen)	\$29,682	\$29,682	\$29,682	\$0	100.00%
	\$479,871	\$479,871	\$470,112	\$0	97.97%
2. Construction Cost					
2.01 Construction - Site					
UNCOMMITTED	\$0	\$0	\$0	\$0	
ACCO ENGINEERED SYSTEMS INC	\$209,074	\$209,074	\$209,074	\$0	100.00%
KYA SERVICES LLC (Install Carpet)	\$20,824	\$20,824	\$9,564	\$0	45.93%
SWINERTON BUILDERS	\$6,556,428	\$6,556,428	\$6,555,566	\$0	99.99%
TRIMARK RAYGAL LLC	\$89,860	\$89,860	\$89,860	\$0	100.00%
	\$6,876,186	\$6,876,186	\$6,864,064	\$0	99.82%
3. Program and Construction Management					
3.01 Program Management Fees					
UNCOMMITTED	\$0	\$0	\$0	\$0	
	\$0	\$0	\$0	\$0	
3.02 Construction Management Fees					
UNCOMMITTED	\$0	\$0	\$0	\$0	
	\$0	\$0	\$0	\$0	
4. Construction Support Costs					
4.01 Rental					
UNCOMMITTED	\$0	\$0	\$0	\$0	
	\$0	\$0	\$0	\$0	
4.02 Title, Environmental, Stormwater Management					
UNCOMMITTED	\$0	\$0	\$0	\$0	
ORANGE COUNTY HEALTH CARE AGENCY	\$1,470	\$1,470	\$1,470	\$0	100.00%



Measure S Bond Program

Financial Report for October 2019

Budget vs Actuals - By School and Budget Category with Vendor Detail

QSS Data thru 10/31/2019

	Budget	Contracted to Date	Expended to Date	Quarterly Expense Oct '19 - Dec '19	% Expended
4.03 Commissioning	\$1,470	\$1,470	\$1,470	\$0	100.00%
UNCOMMITTED	\$0	\$0	\$0	\$0	
P2S ENGINEERING INC	\$4,755	\$4,755	\$3,338	\$919	70.20%
	\$4,755	\$4,755	\$3,338	\$919	70.20%
4.04 Builders Risk Insurance					
UNCOMMITTED	\$0	\$0	\$0	\$0	
	\$0	\$0	\$0	\$0	
4.05 DSA Review Fees					
UNCOMMITTED	\$3,853	\$0	\$0	\$0	
DIVISION OF STATE ARCHITECT	\$94,585	\$94,585	\$94,585	\$0	100.00%
	\$98,438	\$94,585	\$94,585	\$0	96.09%
4.06 Postage, Printing & Advertising					
UNCOMMITTED	\$1	\$0	\$0	\$0	
AMERICAN REPROGRAPHICS CO LLC	\$7,630	\$7,630	\$7,630	\$0	100.00%
SOUTHERN CALIFORNIA NEWS GROUP	\$1,264	\$1,264	\$1,264	\$0	100.00%
	\$8,895	\$8,894	\$8,894	\$0	99.99%
4.07 DSA Inspection					
UNCOMMITTED	\$0	\$0	\$0	\$0	
KNOWLAND CONSTRUCTION SERVICES	\$104,480	\$104,480	\$96,985	\$0	92.83%
	\$104,480	\$104,480	\$96,985	\$0	92.83%
4.08 DSA Construction Phase Testing					
UNCOMMITTED	\$0	\$0	\$0	\$0	
NINYO & MOORE	\$113,255	\$113,255	\$112,544	\$0	99.37%
	\$113,255	\$113,255	\$112,544	\$0	99.37%
4.09 Relocation					
UNCOMMITTED	\$0	\$0	\$0	\$0	
	\$0	\$0	\$0	\$0	
4.10 Labor Compliance					
UNCOMMITTED	\$0	\$0	\$0	\$0	
	\$0	\$0	\$0	\$0	
4.11 Preliminary Testing (Hazmat, Topo Survey, Geo)					
UNCOMMITTED	\$0	\$0	\$0	\$0	
ENVIRONMENTAL NETWORK CORPORATION (Hazardous Material)	\$9,100	\$9,100	\$6,680	\$0	73.41%
	\$9,100	\$9,100	\$6,680	\$0	73.41%
4.12 Utility Connection Fees (with Local Permittin					
UNCOMMITTED	\$0	\$0	\$0	\$0	
	\$0	\$0	\$0	\$0	
4.13 FF&E (Laboratory Tables and Chairs, other)					
UNCOMMITTED	\$0	\$0	\$0	\$0	



Measure S Bond Program

Financial Report for October 2019

Budget vs Actuals - By School and Budget Category with Vendor Detail

QSS Data thru 10/31/2019

	Budget	Contracted to Date	Expended to Date	Quarterly Expense Oct '19 - Dec '19	% Expended
4.14 Legal Counsel	\$0	\$0	\$0	\$0	
UNCOMMITTED	\$0	\$0	\$0	\$0	
	\$0	\$0	\$0	\$0	
5. Contingency					
5.01 Construction Contingency					
UNCOMMITTED	\$11,778	\$0	\$0	\$0	
	\$11,778	\$0	\$0	\$0	0.00%
5.02 Project Contingency					
UNCOMMITTED	\$298,271	\$0	\$0	\$0	
	\$298,271	\$0	\$0	\$0	0.00%
Total 392-9520 Orange HS Site Improvements (DSA 04-116673)	\$8,006,498	\$7,692,596	\$7,658,671	\$919	95.66%
392-9520 Orange HS Phase II Planning and Design					
1. Design Cost					
1.01 Architect					
UNCOMMITTED	\$0	\$0	\$0	\$0	
LIONAKIS (Program Master Specifications)	\$80,500	\$80,500	\$76,138	\$0	94.58%
	\$80,500	\$80,500	\$76,138	\$0	94.58%
5. Contingency					
5.01 Construction Contingency					
UNCOMMITTED	\$0	\$0	\$0	\$0	
	\$0	\$0	\$0	\$0	
5.02 Project Contingency					
UNCOMMITTED	\$1,450,000	\$0	\$0	\$0	
	\$1,450,000	\$0	\$0	\$0	0.00%
Total 392-9520 Orange HS Phase II Planning and Design	\$1,530,500	\$80,500	\$76,138	\$0	4.97%
392-TBD Orange HS Science Center Unallocated Funds F22					
1. Unallocated Bond Funds					
1.01 Unbudgeted Bond Funds					
UNCOMMITTED	\$1,520,780	\$0	\$0	\$0	
	\$1,520,780	\$0	\$0	\$0	0.00%
Total 392-TBD Orange HS Science Center Unallocated Funds F22	\$1,520,780	\$0	\$0	\$0	0.00%
392-9520 Orange HS Unallocated Funds F21					
5. Program Reserve					
5.03 Interest Earned - Reserve					



Measure S Bond Program

Financial Report for October 2019

Budget vs Actuals - By School and Budget Category with Vendor Detail

QSS Data thru 10/31/2019

	Budget	Contracted to Date	Expended to Date	Quarterly Expense Oct '19 - Dec '19	% Expended
UNCOMMITTED	\$840,506	\$0	\$0	\$0	
	\$840,506	\$0	\$0	\$0	0.00%
4. Construction Support Costs					
4.15 Miscellaneous Fees					
UNCOMMITTED	\$0	\$0	\$0	\$0	
OUSD COST OF INTEREST DISTRIBUTION	\$25,457	\$25,457	\$25,457	\$0	100.00%
	\$25,457	\$25,457	\$25,457	\$0	100.00%
Total 392-9520 Orange HS Unallocated Funds F21	\$865,963	\$25,457	\$25,457	\$0	2.94%
392-TBD Orange HS Unallocated Funds F22					
1. Unallocated Bond Funds					
1.01 Unbudgeted Bond Funds					
UNCOMMITTED	\$17,978,844	\$0	\$0	\$0	
	\$17,978,844	\$0	\$0	\$0	0.00%
Total 392-TBD Orange HS Unallocated Funds F22	\$17,978,844	\$0	\$0	\$0	0.00%
Orange High School	\$72,865,963	\$40,279,452	\$17,942,517	\$1,850,614	24.62%
Villa Park High School					
394-0000 Villa Park HS IP Surveillance Camera and Systems					
1. FF&E (IP Surveillance Camera)					
\$5000+ New Equipment					
UNCOMMITTED	\$0	\$0	\$0	\$0	
CDW GOVERNMENT INC (Parts for IP Camera Systems)	\$32,182	\$32,182	\$32,182	\$0	100.00%
DIGITAL NETWORKS GROUP INC (F/I IP Camera Software)	\$8,635	\$8,635	\$8,635	\$0	100.00%
INTER-PACIFIC INC (Install IP Based Surveillance Camera System)	\$22,133	\$22,133	\$22,133	\$0	100.00%
	\$62,949	\$62,949	\$62,949	\$0	100.00%
2. Contingency					
2.01 Project Contingency					
UNCOMMITTED	\$0	\$0	\$0	\$0	
	\$0	\$0	\$0	\$0	
Total 394-0000 Villa Park HS IP Surveillance Camera and Systems	\$62,949	\$62,949	\$62,949	\$0	100.00%
394-9520 Villa Park HS Science Center (DSA 04-117022)					
1. Design Cost					
1.01 Architect					
UNCOMMITTED	\$70,598	\$0	\$0	\$0	
DKS ASSOCIATES	\$78,310	\$78,310	\$66,213	\$0	84.55%



Measure S Bond Program

Financial Report for October 2019

Budget vs Actuals - By School and Budget Category with Vendor Detail

QSS Data thru 10/31/2019

	Budget	Contracted to Date	Expended to Date	Quarterly Expense Oct '19 - Dec '19	% Expended
LIONAKIS (Program Master Specifications)	\$14,059	\$14,059	\$14,059	\$0	100.00%
LPA INC	\$2,161,858	\$2,161,858	\$1,677,349	\$119,275	77.59%
	\$2,324,825	\$2,254,227	\$1,757,620	\$119,275	75.60%
2. Construction Cost					
2.01 Construction					
UNCOMMITTED	\$250,930	\$0	\$0	\$0	
ACCO ENGINEERED SYSTEMS INC	\$150,829	\$150,829	\$127,947	\$0	84.83%
ANGELES CONTRACTOR, INC	\$20,179,504	\$20,231,083	\$2,385,975	\$0	11.82%
	\$20,581,263	\$20,381,912	\$2,513,922	\$0	12.21%
3. Program and Construction Management					
3.01 Program Management Fees					
UNCOMMITTED	\$472,911	\$0	\$0	\$0	
CUMMING CONSTRUCTION MGMT INC	\$682,224	\$1,155,135	\$506,680	\$46,680	74.27%
	\$1,155,135	\$1,155,135	\$506,680	\$46,680	43.86%
3.02 Construction Management Fees					
UNCOMMITTED	\$284,581	\$0	\$0	\$0	
CORDOBA CORPORATION	\$1,459,850	\$1,571,242	\$849,987	\$0	58.22%
	\$1,744,430	\$1,571,242	\$849,987	\$0	48.73%
4. Construction Support Costs					
4.01 Rental					
UNCOMMITTED	\$34,606	\$0	\$0	\$0	
	\$34,606	\$0	\$0	\$0	0.00%
4.02 Title, Environmental, Stormwater Management					
UNCOMMITTED	\$13,840	\$0	\$0	\$0	
CHICAGO TITLE COMPANY	\$750	\$750	\$750	\$0	100.00%
OUSD COST OF INTEREST DISTRIBUTION	\$1	\$1	\$1	\$0	100.00%
PLACEWORKS INC	\$87,059	\$87,059	\$73,237	\$0	84.12%
	\$101,650	\$87,810	\$73,987	\$0	72.79%
4.03 Commissioning					
UNCOMMITTED	\$0	\$0	\$0	\$0	
P2S ENGINEERING INC	\$31,635	\$31,635	\$17,571	\$1,602	55.54%
	\$31,635	\$31,635	\$17,571	\$1,602	55.54%
4.04 Builders Risk Insurance					
UNCOMMITTED	\$0	\$0	\$0	\$0	
	\$0	\$0	\$0	\$0	
4.05 DSA Review Fees					
UNCOMMITTED	\$29,470	\$0	\$0	\$0	
DIVISION OF STATE ARCHITECT	\$289,250	\$289,250	\$289,250	\$0	100.00%
	\$318,720	\$289,250	\$289,250	\$0	90.75%



Measure S Bond Program

Financial Report for October 2019

Budget vs Actuals - By School and Budget Category with Vendor Detail

QSS Data thru 10/31/2019

	Budget	Contracted to Date	Expended to Date	Quarterly Expense Oct '19 - Dec '19	% Expended
4.06 Postage, Printing & Advertising					
UNCOMMITTED	\$27,944	\$0	\$0	\$0	
AMERICAN REPROGRAPHICS CO LLC	\$14,483	\$14,483	\$10,483	\$0	72.38%
SOUTHERN CALIFORNIA NEWS GROUP	\$1,768	\$1,768	\$1,768	\$0	100.00%
	\$44,195	\$16,251	\$12,251	\$0	27.72%
4.07 DSA Inspection					
UNCOMMITTED	\$24,947	\$0	\$0	\$0	
BPI INSPECTION SERVICE	\$318,495	\$318,495	\$17,765	\$0	5.58%
	\$343,442	\$318,495	\$17,765	\$0	5.17%
4.08 DSA Construction Phase Testing					
UNCOMMITTED	\$86,707	\$0	\$0	\$0	
NINYO & MOORE	\$263,869	\$263,869	\$7,730	\$0	2.93%
	\$350,576	\$263,869	\$7,730	\$0	2.20%
4.09 Relocation					
UNCOMMITTED	\$360	\$0	\$0	\$0	
	\$360	\$0	\$0	\$0	0.00%
4.10 Labor Compliance					
UNCOMMITTED	\$55,244	\$0	\$0	\$0	
	\$55,244	\$0	\$0	\$0	0.00%
4.11 Preliminary Testing (Hazmat, Topo Survey, Geo)					
UNCOMMITTED	\$351,437	\$0	\$0	\$0	
CALIFORNIA GEOLOGICAL SURVEY (Geology and Seismology Review)	\$3,600	\$3,600	\$3,600	\$0	100.00%
ENVIRONMENTAL NETWORK CORPORATION (Hazardous Material)	\$3,140	\$3,140	\$0	\$0	0.00%
LEIGHTON CONSULTING INC (Geotechnical Engineering)	\$20,000	\$20,000	\$16,549	\$0	82.75%
PSOMAS (Topographical Survey)	\$27,000	\$27,000	\$21,034	\$0	77.90%
RMA GROUP (dba SITESCAN)	\$53,125	\$53,125	\$19,100	\$0	35.95%
SPECTRUM FIRE PROTECTION (Fire Hydrant Flow Test)	\$1,000	\$1,000	\$1,000	\$0	100.00%
	\$459,302	\$107,865	\$61,283	\$0	13.34%
4.12 Utility Connection Fees (with Local Permittin					
UNCOMMITTED	\$110,488	\$0	\$0	\$0	
	\$110,488	\$0	\$0	\$0	0.00%
4.13 FF&E (Laboratory Tables and Chairs, other)					
UNCOMMITTED	\$871,544	\$0	\$0	\$0	
CULVER-NEWLIN INC	\$12,359	\$12,359	\$12,359	\$0	100.00%
	\$883,903	\$12,359	\$12,359	\$0	1.40%
4.14 Legal Counsel					
UNCOMMITTED	\$55,244	\$0	\$0	\$0	
	\$55,244	\$0	\$0	\$0	0.00%

5. Contingency

5.01 Construction Contingency



Measure S Bond Program

Financial Report for October 2019

Budget vs Actuals - By School and Budget Category with Vendor Detail

QSS Data thru 10/31/2019

	Budget	Contracted to Date	Expended to Date	Quarterly Expense Oct '19 - Dec '19	% Expended
UNCOMMITTED	\$2,341,062	\$0	\$0	\$0	
	\$2,341,062	\$0	\$0	\$0	0.00%
5.02 Project Contingency					
UNCOMMITTED	\$7,768,154	\$0	\$0	\$0	
	\$7,768,154	\$0	\$0	\$0	0.00%
Total 394-9520 Villa Park HS Science Center (DSA 04-117022)	\$38,704,235	\$26,490,049	\$6,120,404	\$167,556	15.81%
394-9520 Villa Park HS Interim Housing (DSA 04-116788)					
1. Design Cost					
1.01 Architect					
UNCOMMITTED	\$0	\$0	\$0	\$0	
LPA INC	\$70,000	\$70,000	\$70,000	\$0	100.00%
	\$70,000	\$70,000	\$70,000	\$0	100.00%
2. Construction Cost					
2.01 Construction					
UNCOMMITTED	\$4,254	\$0	\$0	\$0	
ACCO ENGINEERED SYSTEMS INC	\$36,527	\$36,527	\$36,527	\$0	100.00%
ANGELES CONTRACTOR, INC	\$1,070,302	\$1,074,556	\$1,070,302	\$0	100.00%
	\$1,111,083	\$1,111,083	\$1,106,829	\$0	99.62%
3. Program and Construction Management					
3.01 Program Management Fees					
UNCOMMITTED	\$0	\$0	\$0	\$0	
	\$0	\$0	\$0	\$0	
3.02 Construction Management Fees					
UNCOMMITTED	\$0	\$0	\$0	\$0	
	\$0	\$0	\$0	\$0	
4. Construction Support Costs					
4.01 Rental					
UNCOMMITTED	\$0	\$0	\$0	\$0	
ELITE MODULAR LEASING & SALES INC	\$444,082	\$444,082	\$253,237	\$0	57.02%
	\$444,082	\$444,082	\$253,237	\$0	57.02%
4.02 Title, Environmental, Stormwater Management					
UNCOMMITTED	\$0	\$0	\$0	\$0	
	\$0	\$0	\$0	\$0	
4.03 Commissioning					
UNCOMMITTED	\$0	\$0	\$0	\$0	
	\$0	\$0	\$0	\$0	
4.05 DSA Review Fees					

**Measure S Bond Program**

Financial Report for October 2019

Budget vs Actuals - By School and Budget Category with Vendor Detail

QSS Data thru 10/31/2019

	Budget	Contracted to Date	Expended to Date	Quarterly Expense Oct '19 - Dec '19	% Expended
UNCOMMITTED	\$2,812	\$0	\$0	\$0	
DIVISION OF STATE ARCHITECT	\$18,116	\$18,116	\$18,116	\$0	100.00%
	\$20,928	\$18,116	\$18,116	\$0	86.56%
4.06 Postage, Printing & Advertising					
UNCOMMITTED	\$0	\$0	\$0	\$0	
	\$0	\$0	\$0	\$0	
4.07 DSA Inspection					
UNCOMMITTED	\$0	\$0	\$0	\$0	
BPI INSPECTION SERVICE	\$43,265	\$43,265	\$43,265	\$0	100.00%
	\$43,265	\$43,265	\$43,265	\$0	100.00%
4.08 DSA Construction Phase Testing					
UNCOMMITTED	\$0	\$0	\$0	\$0	
NINYO & MOORE	\$36,131	\$36,131	\$36,131	\$0	100.00%
	\$36,131	\$36,131	\$36,131	\$0	100.00%
4.09 Relocation Services (Charged to District)					
UNCOMMITTED	\$0	\$0	\$0	\$0	
Beltmann Group, Inc.	\$4,640	\$4,640	\$4,640	\$0	100.00%
	\$4,640	\$4,640	\$4,640	\$0	100.00%
Total 394-9520 Villa Park HS Interim Housing (DSA 04-116788)	\$1,730,128	\$1,727,316	\$1,532,218	\$0	88.56%
394-9520 Villa Park HS Parking and Drop Off (DSA 04-118521)					
1. Design Cost					
1.01 Architect					
UNCOMMITTED	\$0	\$0	\$0	\$0	
LPA INC	\$107,305	\$107,305	\$44,873	\$0	41.82%
	\$107,305	\$107,305	\$44,873	\$0	41.82%
2. Construction Cost					
2.01 Construction					
UNCOMMITTED	\$0	\$0	\$0	\$0	
ANGELES CONTRACTOR, INC	\$2,750,000	\$2,750,000	\$0	\$0	0.00%
	\$2,750,000	\$2,750,000	\$0	\$0	0.00%
3. Program and Construction Management					
3.01 Program Management Fees					
UNCOMMITTED	\$0	\$0	\$0	\$0	
	\$0	\$0	\$0	\$0	
3.02 Construction Management Fees					
UNCOMMITTED	\$0	\$0	\$0	\$0	
	\$0	\$0	\$0	\$0	



Measure S Bond Program

Financial Report for October 2019

Budget vs Actuals - By School and Budget Category with Vendor Detail

QSS Data thru 10/31/2019

	Budget	Contracted to Date	Expended to Date	Quarterly Expense Oct '19 - Dec '19	% Expended
4. Construction Support Costs					
4.02 Title, Environmental, Stormwater Management					
UNCOMMITTED	\$0	\$0	\$0	\$0	
	\$0	\$0	\$0	\$0	
4.03 Commissioning					
UNCOMMITTED	\$0	\$0	\$0	\$0	
	\$0	\$0	\$0	\$0	
4.05 DSA Review Fees					
UNCOMMITTED	\$0	\$0	\$0	\$0	
DIVISION OF STATE ARCHITECT	\$37,450	\$37,450	\$37,450	\$0	100.00%
	\$37,450	\$37,450	\$37,450	\$0	100.00%
Total 394-9520 Villa Park HS Parking and Drop Off (DSA 04-118521)	\$2,894,755	\$2,894,755	\$82,323	\$0	2.84%
394-9520 Villa Park HS Phase II Planning and Design					
1. Design Cost					
1.01 Architect					
UNCOMMITTED	\$0	\$0	\$0	\$0	
LPA INC	\$77,000	\$77,000	\$76,000	\$1,520	98.70%
	\$77,000	\$77,000	\$76,000	\$1,520	98.70%
5. Contingency					
5.01 Construction Contingency					
UNCOMMITTED	\$0	\$0	\$0	\$0	
	\$0	\$0	\$0	\$0	
5.02 Project Contingency					
UNCOMMITTED	\$1,800,000	\$0	\$0	\$0	
	\$1,800,000	\$0	\$0	\$0	0.00%
Total 394-9520 Villa Park HS Phase II Planning and Design	\$1,877,000	\$77,000	\$76,000	\$1,520	4.05%
394-TBD Villa Park HS Science Center Unallocated Funds F22					
1. Unallocated Bond Funds					
1.01 Unbudgeted Bond Funds					
UNCOMMITTED	\$1,870,882	\$0	\$0	\$0	
	\$1,870,882	\$0	\$0	\$0	0.00%
Total 394-TBD Villa Park HS Science Center Unallocated Funds F22	\$1,870,882	\$0	\$0	\$0	0.00%
394-9520 Villa Park Unallocated Funds F21					
4. Construction Support Costs					
4.15 Miscellaneous Fees					



Measure S Bond Program

Financial Report for October 2019

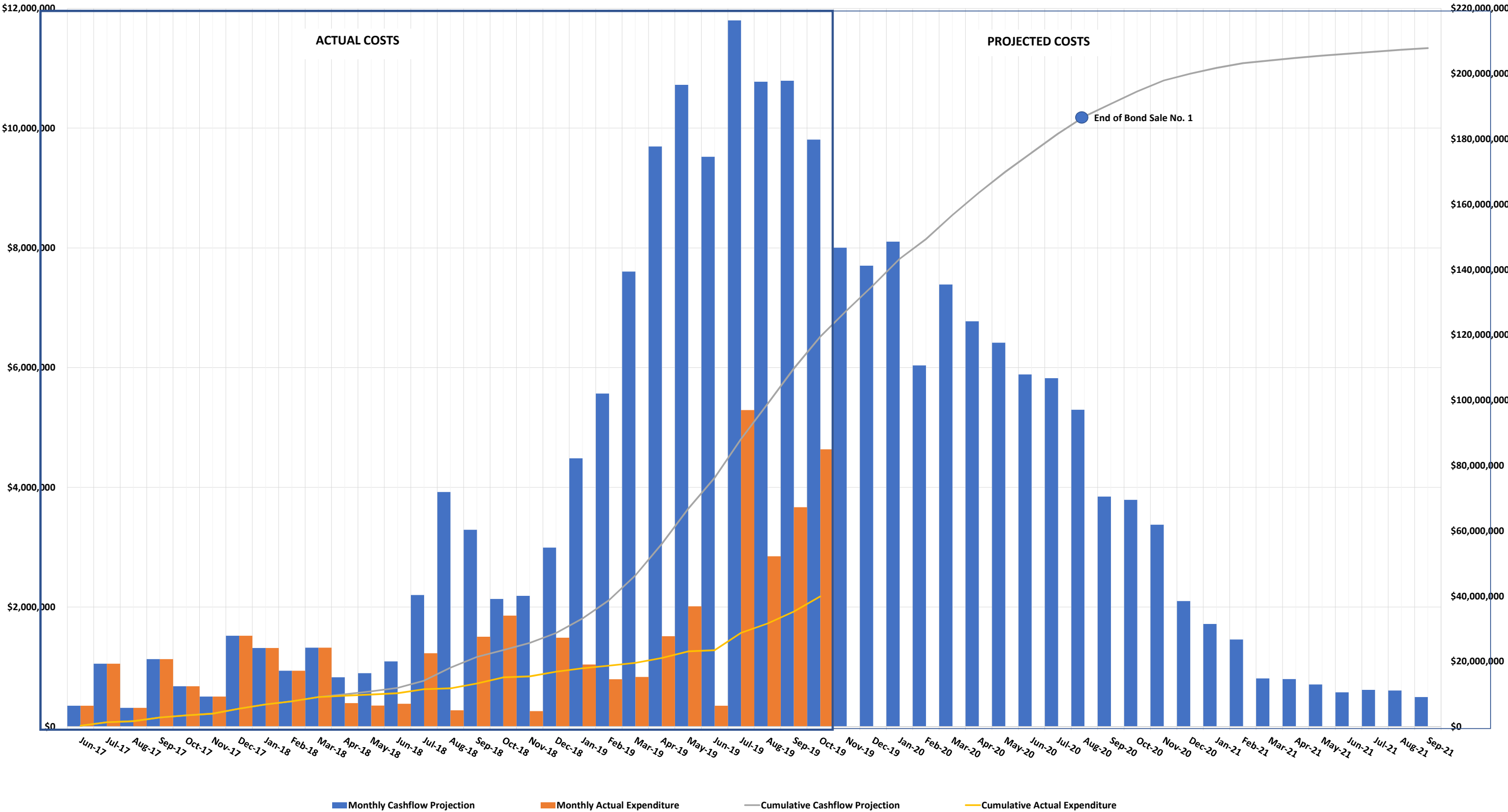
Budget vs Actuals - By School and Budget Category with Vendor Detail

QSS Data thru 10/31/2019

	Budget	Contracted to Date	Expended to Date	Quarterly Expense Oct '19 - Dec '19	% Expended
UNCOMMITTED	\$0	\$0	\$0	\$0	
OUSD COST OF INTEREST DISTRIBUTION	\$20,426	\$20,426	\$20,426	\$0	100.00%
	\$20,426	\$20,426	\$20,426	\$0	100.00%
5. Program Reserve					
5.03 Interest Earned - Reserve					
UNCOMMITTED	\$678,236	\$0	\$0	\$0	
	\$678,236	\$0	\$0	\$0	0.00%
Total 394-9520 Villa Park Unallocated Funds F21	\$698,662	\$20,426	\$20,426	\$0	2.92%
394-TBD Villa Park Unallocated Funds F22					
1. Unallocated Bond Funds					
1.01 Unbudgeted Bond Funds					
UNCOMMITTED	\$24,860,051	\$0	\$0	\$0	
	\$24,860,051	\$0	\$0	\$0	0.00%
Total 394-TBD Villa Park Unallocated Funds F22	\$24,860,051	\$0	\$0	\$0	0.00%
Villa Park High School	\$72,698,662	\$31,272,496	\$7,894,321	\$169,076	10.86%



MEASURE S BOND PROGRAM - SCIENCE CENTER (PHASE I) CASH FLOW PROJECTION
Actual Costs thru October 30, 2019
Projected Costs thru September 30, 2021

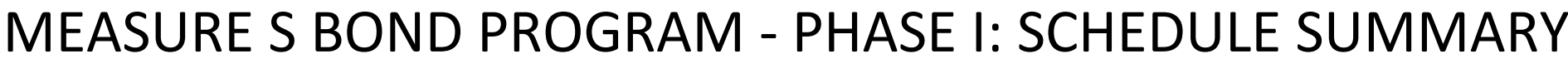


4.1 Program Summary Schedule - Phase I



A horizontal timeline from 2016 to 2017. The timeline is marked with vertical red dashed lines. The following events are listed with red horizontal lines pointing to the timeline:

- Bond Measure S Passes by 62% on 11/8/16
- Program Manager Starts Work 1/17/17
- Orange HS Schematic Design & Budget Board Approved 4/13/17
- El Modena HS Schematic Design & Budget Board Approved 5/11/17
- Canyon HS Schematic Design & Budget Board Approved 5/25/17
- Villa Park HS Schematic Design & Budget Board Approved 6/8/17

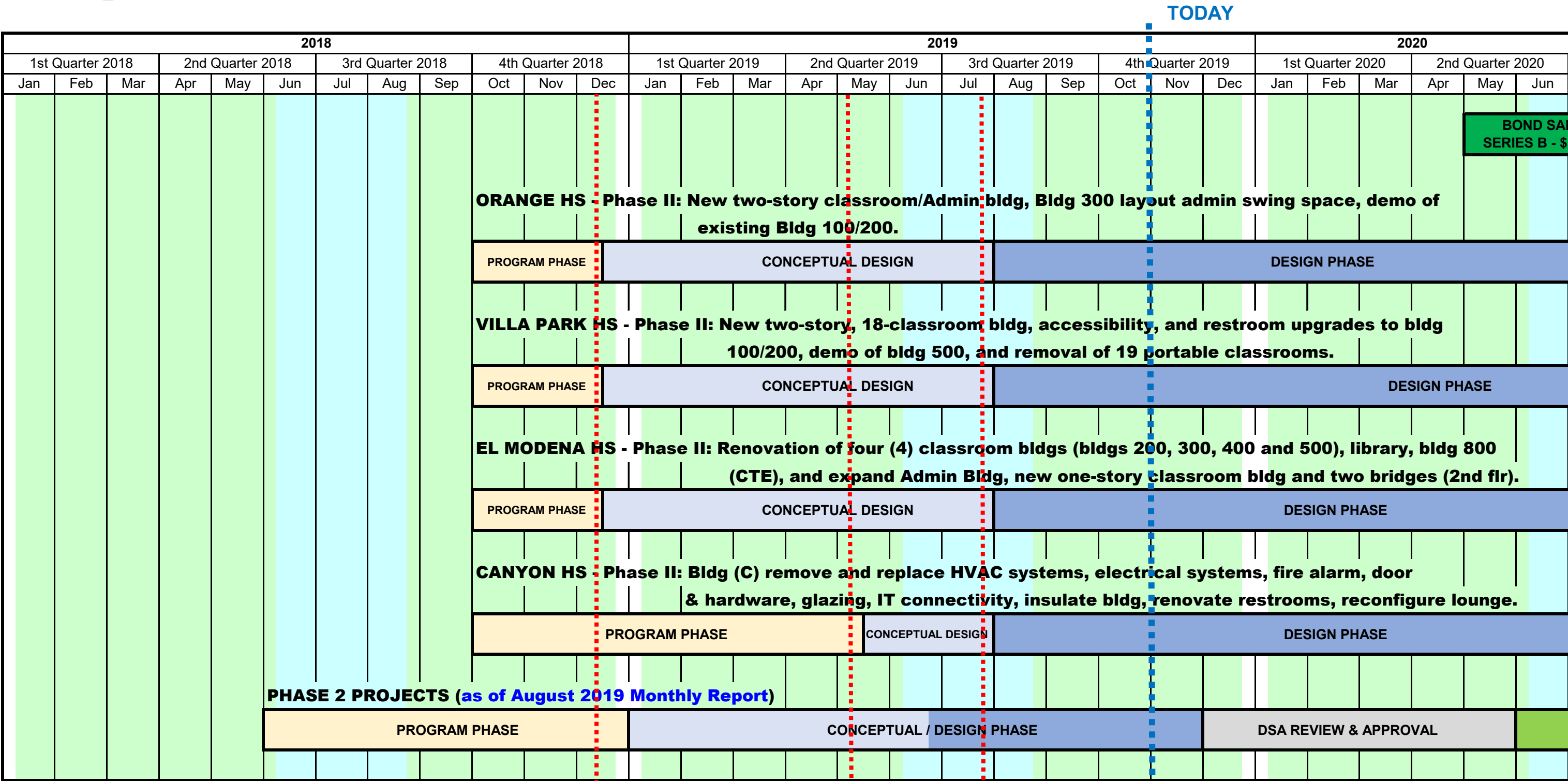


2019						2020												2021											
3rd Quarter 2019			4th Quarter 2019			1st Quarter 2020			2nd Quarter 2020			3rd Quarter 2020			4th Quarter 2020			1st Quarter 2021			2nd Quarter 2021			3rd Quarter 2021			4th Quarter 2021		
Jul	Aug	Sep	Oct	Nov	Dec	Jan	Feb	Mar	Apr	May	Jun	Jul	Aug	Sep	Oct	Nov	Dec	Jan	Feb	Mar	Apr	May	Jun	Jul	Aug	Sep	Oct	Nov	Dec
												BOND SALE SERIES B - \$100M			End of Bond Series A Funds (Projected)														
ORANGE HS - STEM Building, Medically Fragile Classrooms, New Fire Lanes																													
CONSTRUCTION												FF&E / CLOSEOUT																	
VILLA PARK HS - STEM Building, Medically Fragile Classrooms, Interim Housing, Site Infrastructure, Stormwater Bioretention Basin																													
CONSTRUCTION																		FF&E / CLOSEOUT											
EL MODENA HS - STEM Building, Medically Fragile Classrooms, Site Infrastructure, New Fire Lanes, Parking Lot Lighting																													
CONSTRUCTION												FF&E / CLOSEOUT																	
CANYON HS - Continued; New Parking Lot Lighting and 100 New Parking Spaces																													
CONSTRUCTION																								FF&E / CLOSEOUT					

 — **SUMMER BREAK**

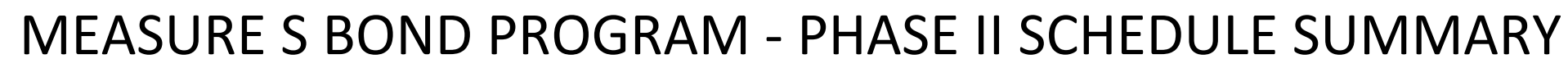



MEASURE S BOND PROGRAM - PHASE II: SCHEDULE SUMMARY



SUMMER BREAK

- Conceptual Design Board Approved 12/13/18
- Conceptual Design Board Approved 5/9/19 for Canyon HS
- Phase II Design & Budget Board Approved 7/25/19
- Orange HS
- El Modena HS
- Villa Park HS
- Canyon HS



 — **Phase II Design Document & Constrcution Estimate Board Approval**

Orange HS

El Modena HS

Villa Park HS

Canyon HS

Board of Education

Alexia Deligianni-Brydges, Ed. D, President

Kathryn A. Moffat, Vice-President

Kris Erickson

Andrea Yamasaki

Rick Ledesma

John Ortega

Brenda Lebsack

Gunn Marie Hansen, Ph.D.

Superintendent

David A. Rivera

Assistant Superintendent/CBO

Business Services

Scott Harvey

Senior Executive Director

Administrative Services



Facilities & Planning Department

Measure S Bond Program

726 W. Collins Avenue

Orange, CA 92867

T: (714) 628-4500