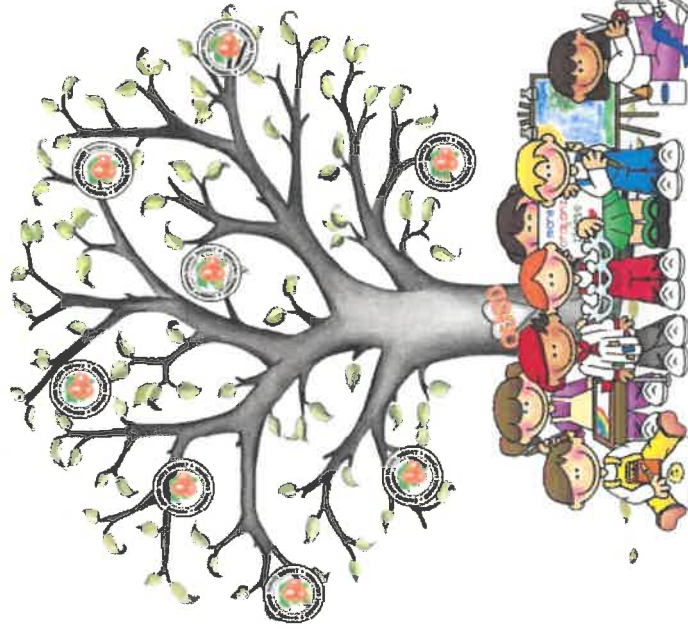


# 2019-2020

## TRANSITIONAL KINDERGARTEN

### SCHOOL SITES

Anaheim Hills♦	Fairhaven	Olive♦
California	Fletcher♦	Prospect
Cambridge♦	Imperial♦	Running Springs♦
Canyon Rim♦	Jordan	Taft♦
Chapman Hills♦	Lampson	West Orange♦
Crescent♦		



♦ *Expanded Learning/CARES is Available at this site*

**Hours:** Follow School Site Bell Schedule

**Childcare:** Based on Site Availability

Please call (714) 628-5360 for information

- ✓ Enrollment is based on available space and site location. You will be offered an alternative school placement if enrollment requests exceed space availability, site availability or if enrollment requests are not sufficient to open Transitional Kindergarten at any of the TK sites.
- ✓ Transportation to and from Transitional Kindergarten site will be the responsibility of the parent.

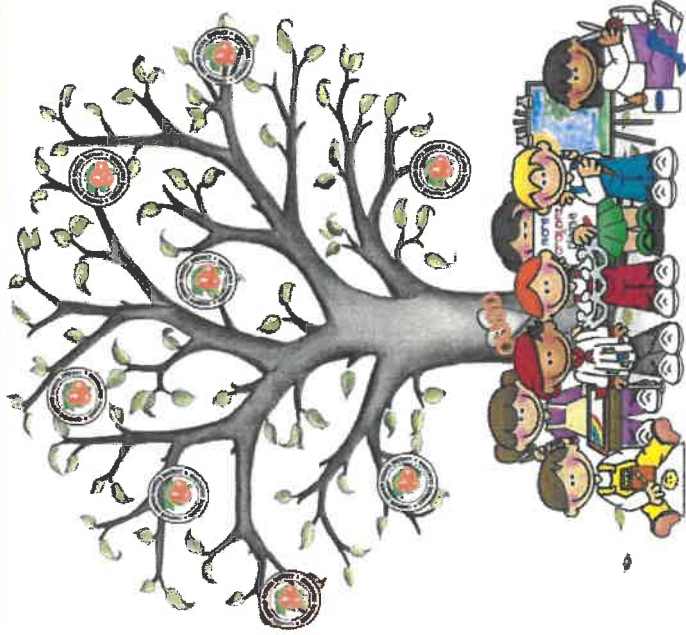
**YOU MUST REGISTER YOUR CHILD AT YOUR HOME SCHOOL**

## Questions?

Contact Elementary Education at (714) 628-4463 or The Early Learning Center at (714) 628-5656

# 2019-2020

## KINDER de TRANSICIÓN



### SITIOS ESCOLARES

- |                |           |                  |
|----------------|-----------|------------------|
| Anaheim Hills♦ | Fairhaven | Olive♦           |
| California     | Fletcher♦ | Prospect         |
| Cambridge♦     | Imperial♦ | Running Springs♦ |
| Canyon Rim♦    | Jordan    | Taft♦            |
| Chapman Hills♦ | Lampson   | West Orange♦     |
| Crescent♦      |           |                  |

♦ se ofrece Aprendizaje/programa CARES en este sitio

Horas: Sigue el horario escolar  
Cuidado de niños: Basado en disponibilidad  
favor de llamar al (714) 628-5360 para más información

- ✓ La inscripción está basada en espacio disponible en estas escuelas. Se le ofrecerá otra escuela alternativa si las inscripciones exceden el espacio disponible o si no hay suficiente alumnos para abrir un salón de Kinder de Transición en cualquiera de los sitios escolares de TK.
- ✓ La transportación de ida y de regreso al Kinder de Transición será la responsabilidad de los padres.

**USTED DEBE INSCRIBIR A SU HIJO/A EN LA ESCUELA QUE LE PERTENECE**

### ¿alguna pregunta?

Comuníquese a la oficina de Educación Primaria al (714) 628-4463 o Centro de Aprendizaje Temprano al (714) 628-5656

# 2019-2020

## TK & KINDERGARTEN AGE CHART

Dec 2013	Jan	Feb	March	April	May	June 2014
<b>3</b>	<i>- thru -</i>					<b>30</b>

5 yrs old: December 3, 2013 – June 30, 2014

- \* TK not an option
- \* May attend regular Kindergarten

July 2014	Aug	Sept 2014
<b>1</b>	<i>- thru -</i>	<b>1</b>

5 yrs old: July 1 – September 1, 2014

- \* Age appropriate to attend Kindergarten, TK is optional
- \* Not a retention, but must sign a Continuance Form if attending TK for the 2019-20 school year

Sept 2014	Oct	Nov	Dec 2014
<b>2</b>	<i>- thru -</i>		<b>2</b>

5 yrs old: September 2 – December 2, 2014

- \* Not age appropriate to attend Kindergarten, may attend TK
- \* TK and Kindergarten are optional grades, not required by California

Dec 2014	Jan	Feb 2015
<b>3</b>	<i>- thru -</i>	
<b>28</b>		

5 yrs old: December 3, 2014 – February 28, 2015

- \* Placed on waiting list according to birthdate from oldest to youngest
- \* Age appropriate for ETK and Preschool
- ◆ New students registering for 1<sup>st</sup> grade who have not attended kindergarten need to have their 6<sup>th</sup> birthday on or before September 1<sup>st</sup> to be age appropriate for 1<sup>st</sup> grade.

**OUSD LCAP Parent Survey Summary – January 2019**

Which Orange Unified School District (OUSD) schools do your children currently attend? (check all that apply) (N=4,297)

School	Count
Anaheim Hills Elementary	76
California Elementary	293
Cambridge Elementary	58
Canyon Rim Elementary	105
Chapman Hills Elementary	141
Crescent Elementary	41
Esplanade Elementary	59
Fairhaven Elementary	96
Fletcher Elementary	90
Handy Elementary	172
Imperial Elementary	99
Jordan Elementary	107
La Veta Elementary	217
Lampson Elementary	593
Linda Vista Elementary	52
McPherson Magnet (K-5th)	210
Nohl Canyon Elementary	87
Olive Elementary	58
Palmyra Elementary	80
Panorama Elementary	78
Prospect Elementary	26
Running Springs Elementary	78
Serrano Elementary	26
Sycamore Elementary	42
Taft Elementary	68
Villa Park Elementary	122
West Orange Elementary	27

School	Count
Cerro Villa Middle School	92
El Rancho Charter Middle School	115
McPherson Magnet (6th-8th)	100
Portola Middle School	26
Santiago Charter Middle School	102
Yorba Middle School	63
Canyon High School	272
El Modena High School	150
Orange High School	94
Richland High School	8
Villa Park High School	134
Alternative Ed	2
Canyon Hills	5
Child Development Center	8
OUSD Community Day School	1
OUSD Home School	3
Orange Unified Pre-K SDC	12
Other: (write in)	2
No school selected	7

Other: (write in) responses: none received

How many of your children currently attend OUSD schools?

	Count
1	1,449
2	1,857
3	668
4 or more	216

OUSD LCAP Parent Survey Summary – January 2019

What grade are they in? (check all that apply)

Grade	Count
Preschool	423
TK	187
K	56
1 <sup>st</sup>	732
2 <sup>nd</sup>	615
3 <sup>rd</sup>	681
4 <sup>th</sup>	657
5 <sup>th</sup>	778
6 <sup>th</sup>	648

Grade	Count
7 <sup>th</sup>	477
8 <sup>th</sup>	493
9 <sup>th</sup>	463
10 <sup>th</sup>	360
11 <sup>th</sup>	311
12 <sup>th</sup>	239
Adult Transition	10

Please rate how much you agree or disagree with each statement.

		n	Strongly Agree	Agree	No Opinion	Disagree	Strongly Disagree	Not Applicable
<i>Goal 4: Student Achievement</i>	This school communicates effectively with me about grades, assignments, and my child's academic performance.	4,261	<b>52%</b>	39%	3%	4%	1%	1%
<i>Goal 5: Parent Engagement</i>	The school regularly informs me of ways I can be involved at my child's school.	4,254	<b>51%</b>	39%	4%	3%	1%	1%
	I am encouraged to take part in or attend parent/family trainings, workshops or events.	4,245	<b>47%</b>	41%	8%	2%	1%	1%
	There is someone at this school I can communicate with in my preferred language(s).	4,252	<b>61%</b>	27%	5%	1%	0%	5%
	There is a staff member at this school who listens when I have something to say.	4,232	<b>49%</b>	36%	9%	3%	1%	2%

Notes. Percentages are rounded to the nearest whole number. The most common response for each item is highlighted in bold.

**OUSD LCAP Parent Survey Summary – January 2019**

In this school parents are given enough information to: (check all that apply)

		Count
<i>Goal 5: Parent Engagement</i>	Support students to attend school regularly	2,943
	Participate in school surveys	2,531
	Provide academic/homework help	2,521
<i>Goal 7: Safe envir./school connectedness</i>	Ensure their child's safety when they are online and/or using technology	2,322
<i>Goal 5: Parent Engagement</i>	Influence school-level decisions	1,984
<i>Goal 4: Student Achievement</i>	Enroll young children in early learning programs (Preschool, TK and ETK)	1,798
	I'm not sure or None of the above	519

Note. Responses are listed from most common to least common.

Please rate how much you agree or disagree with each statement.

		n	Strongly Agree	Agree	No Opinion	Disagree	Strongly Disagree	Not Applicable
<i>Goal 7: Safe envir./school connectedness</i>	My child feels safe at school.	4,225	<b>49%</b>	42%	4%	3%	1%	1%
<i>Goal 7: Safe envir./school connectedness</i>	I am confident that my child or children will receive the support they need to be successful if they are struggling with behavior or social-emotional issues (including mental health counselors and psychologists).	4,207	37%	<b>39%</b>	13%	6%	2%	3%
<i>Goal 5: Parent Engagement</i>	Student discipline policies are consistently enforced.	4,210	34%	<b>41%</b>	16%	5%	2%	2%
<i>Goal 7: Safe envir./school connectedness</i>	My child is encouraged to get involved in school activities.	4,190	<b>43%</b>	43%	9%	3%	1%	1%

Notes. Percentages are rounded to the nearest whole number. The most common response for each item is highlighted in **bold**.

OUSD LCAP Resume de Encuesta de Padres

Por favor indique la medida en que está de acuerdo o en desacuerdo con cada enunciado.

		n	Muy de acuerdo	De acuerdo	Sin opinión	En desacuerdo	Muy en desacuerdo	No aplica
<b>Meta 4: Logro de estudiante</b>	Esta escuela me comunica de manera eficaz las calificaciones, las tareas y el desempeño académico de mi hijo.	4,261	52%	39%	3%	4%	1%	1%
<b>Meta 5: Compromiso de los padres</b>	Esta escuela me informa de manera periódica acerca de las maneras en que puedo participar en la escuela de mi hijo.	4,254	51%	39%	4%	3%	1%	1%
	Me alientan a formar parte de o a asistir a capacitaciones para padres/familias, talleres o eventos.	4,245	47%	41%	8%	2%	1%	1%
	Hay alguien en esta escuela con el que puedo comunicarme en el /los idiomas(s) de mi preferencia.	4,252	61%	27%	5%	1%	0%	5%
	Hay un miembro del personal en esta escuela que me escucha cuando tengo algo para decir.	4,232	49%	36%	9%	3%	1%	2%

Nota. Los porcentajes se redondean al número entero más cercano. La respuesta más común para cada tema se resalta en negrita.

En esta escuela se les brinda a los padres suficiente información para: (marque todas las opciones que aplican)

<b>Meta 5: Compromiso de los padres</b>	Brindar apoyo a los estudiantes para que asistan a la escuela de manera periódica	2,943
	Participar en encuestas escolares	2,531
	Brindar ayuda académica/ y en tareas para el hogar	2,521
<b>Meta 7:</b>	Proteger la seguridad de sus hijos cuando están en línea y/o utilizando la tecnología.	2,322
<b>Meta 5:</b>	Ejercer influencia en las decisiones de nivel escolar	1,984
<b>Meta 4: Logro de estudiante</b>	Matricular a los niños pequeños en programas de aprendizaje temprano( Preescolar, TK & ETK)	1,798
	No estoy seguro/a o ninguno de estos	519

Nota: Las respuestas se enumeran de las más comunes a las menos comunes.

OUSD LCAP Resume de Encuesta de Padres

Por favor indique en qué medida está de acuerdo o en desacuerdo con cada enunciado.

		n	Muy de acuerdo	De acuerdo	Sin opinión	En desacuerdo	Muy en desacuerdo	No aplica
Meta 7: Entorno seguro/conexión escolar	Mi hijo se siente seguro en la escuela.	4,225	<b>49%</b>	42%	4%	3%	1%	1%
Meta 7: Entorno seguro/conexión escolar	Confía que mi hijo recibirá el apoyo que necesita para ser exitoso si tiene problemas de comportamiento o problemas socio-emocionales (incluidos consejeros de salud mental y psicólogos)	4,207	37%	<b>39%</b>	13%	6%	2%	3%
Meta 5: Compromiso de los padres	Se hacen cumplir las políticas disciplinarias de los estudiantes de manera sistemática.	4,210	34%	<b>41%</b>	16%	5%	2%	2%
Meta 7; Entorno seguro/conexión escolar	Se motivó a mi hijo a participar en actividades escolares.	4,190	<b>43%</b>	43%	9%	3%	1%	1%

Nota. Los porcentajes se redondean al número entero más cercano. La respuesta más común para cada tema se resalta en negrita.





## Local Control Accountability Plan Survey – Summary

Student Responses	Staff Responses	Parent Responses	Community Responses
More <b>STEAM</b>	Professional Development More planning time	Improve student/teacher communication	<b>Academics:</b> More tutoring/support More time w/ <b>counselors</b>
<b>Add social skills</b>	More <b>emphasis on the arts</b> More <b>STEAM</b> opportunities	Educate staff re special education	<b>Technology:</b> Increase use of technology Upgrade equipment
Decrease homework More variety of electives More <b>VAPA</b>	More resources for struggling students Real world experiences	Offer more athletic programs in elem and middle school More <b>VAPA</b> and <b>STEAM</b>	<b>Class Options:</b> Increase college courses More <b>VAPA</b> options More AVID classes
Increase college/career options Better food options <b>New bathrooms</b> Longer recess time	Increase parent involvement in Title 1 schools Improve <b>facilities</b>	More support for struggling students Add leadership roles for elem	<b>Facilities:</b> <b>Remodeling/restrooms</b> New desks/furniture More funding into libraries
Increase tutoring after school More 1:1 time with teacher	<b>Smaller class sizes</b> Eliminate combo classes	Add more discussion on real world experiences Hands-on learning <b>Reduce class size</b>	<b>College Guidance:</b> Provide workshops Speakers
More clubs at elementary level Athletic teams in elementary	Revisit full inclusion		<b>Teaching:</b> Hands-on activities Check for understanding
Increase opportunities to collaborate w/peers	Flexible seating Updated tvs and projectors	More fieldtrips, assemblies Exposure to colleges Internships	<b>Student Workload:</b> Late start Provide more videos/resources
Offer more difficult classes	Mental health <b>counselors</b> Increase hours for psychologist	More time for students to spend with <b>counselors</b>	<b>Career Guidance:</b> Increase pathways Assemblies/speakers Real life experiences
More college and career planning in elementary	Increase comm. involvement	Improve <b>facilities</b>	<b>Communication:</b> Improve parent notification system for homework, general information-parents feel "out of the loop"
	Computers 1:1	Improve home/school communication	<b>Other:</b> More activities/ <b>STEAM</b> <b>Smaller class size</b>

**What other ways can OUSD improve students' educational experience that will help them be college and career ready?**



## Local Control Accountability Plan Survey – Summary

Respuestas de estudiantes	Respuestas del personal	Respuestas de padres	Respuestas de la comunidad
Más STEAM	Desarrollo Profesional Más tiempo de planificación	Mejorar la comunicación entre estudiantes y maestros	<b>Académicos:</b> Más tutoría/apoyo Más tiempo con <b>consejeros</b>
<b>Agregar habilidades sociales</b>	Más <b>énfasis en las artes</b> Más oportunidades en el programa <b>STEAM</b>	Educar al personal en educación especial	<b>Tecnología:</b> Incrementar el uso de la tecnología Actualizar el equipo
Disminuir la tarea Más variedad de materias optativas Más <b>MAPA</b>	Más recursos para estudiantes con dificultades Experiencias del mundo real	Ofrecer más programas atléticos en primaria y en la escuela intermedia Más <b>VAPA</b> y <b>STEAM</b>	<b>Opciones de clase:</b> Aumentar los cursos universitarios Más opciones de <b>VAPA</b> Más clases de AVID
Aumentar las opciones universitarias y profesionales Mejores opciones de alimentos <b>Baños nuevos</b> Mayor tiempo de receso	Aumentar la participación de los padres en las escuelas de Título 1 Mejorar las <b>instalaciones</b>	Más apoyo para los estudiantes con dificultades Agregar roles de liderazgo para primarias	<b>Instalaciones:</b> <b>Remodelación/baños</b> Escritorios y muebles nuevos Más financiación para las bibliotecas
Aumentar la tutoría después de la escuela Más de 1:1 tiempo con el profesor	<b>Clases más pequeñas</b> Eliminar las clases combinadas	Agregar más discusión sobre experiencias del mundo real Aprendizaje práctico	<b>Orientación Universitaria:</b> Ofrecer talleres Altavoces
Más clubes de nivel elemental Equipos de atletismo en primaria	Revisar la inclusión completa	<b>Reducir el número de alumnos por clase</b>	<b>Enseñar:</b> Actividades prácticas Comprobar la comprensión
Aumentar las oportunidades de colaboración con sus compañeros	Asientos flexibles Actualizar proyectores y televisores	Más viajes de campo, montajes Exposición a universidades Pasantías	<b>Carga de trabajo de los estudiantes:</b> Inicio tardío Proporcionar más videos/recursos
Ofrecer clases más difíciles	<b>Consejero</b> de Salud Mental Incrementar horas para psicólogo	Más tiempo para que los estudiantes pasen con los <b>consejeros</b>	<b>Orientación profesional:</b> Aumentar las vías Conjuntos/altavoces Experiencias de la vida real
Más planeación universitaria y de carrera en la escuela primaria	Incrementar el involucramiento de la comunidad	Mejorar las <b>instalaciones</b>	<b>Comunicación:</b> Mejorar el sistema de notificación a los padres para las tareas, información general - los padres se sienten "fuera de onda".
	Computadoras uno a uno	Mejorar la comunicación entre el hogar y la escuela	<b>Otro:</b> Más actividades/ <b>STEAM</b> <b>Menor número de alumnos por clase</b>

What other ways can OUSD improve students' educational experience that will help them be college and career ready?

**The Relationship Spectrum**



**A HEALTHY RELATIONSHIP**

*A healthy relationships means that both you and your partner are...*

- Communicating** - You talk openly about problems and listen to one another. You respect each other's opinions.
- Respectful** - You value each other as you are.
- Trusting** - You believe what your partner says.
- Honest** - You are honest with each other but can still choose to keep certain things private.
- Equal** - You make decisions together and hold each other to the same standard.
- Enjoying personal time** - You both enjoy spending time apart and respect when one of you needs time apart.
- Making mutual sexual choices.** You talk openly about sexual choices together. You both consent to sexual activity and can talk about what is ok and what isn't. You discuss using condoms or other birth control methods.

**AN UNHEALTHY RELATIONSHIP**

*You may be in an unhealthy relationship if one of you is...*

- Not communicating** - When you talk about problems you fight, or you don't talk about them at all.
- Disrespectful** - One or both of you is not considerate of each other.
- Not trusting** - You don't believe what your partner says.
- Dishonest** - One or both partners is telling lies.
- Trying to take control** - One or both partners feel their desires and choices are more important.
- Feeling crowded or not spending time with others** - Only spending time with your partner.
- Pressured by the other into sexual activity** - One partner tries to convince the other that they should have sex, or more sex.
- Ignoring the consequences of sex** - The partners are having consensual sex with each other but are not talking about possible consequences.

**AN ABUSIVE RELATIONSHIP**

*An abusive relationships starts when one of you...*

- Communicates in a way that is hurtful or insulting.**
- Mistreats the other** - One or both partners does not respect the feelings and physical safety of the other.
- Accuses the other of flirting or cheating when it's not true** - The partner that accuses may hurt the other in a physical or verbal way as a result.
- Denies that the abusive actions are abuse** - They may try to blame the other for the harm they're doing.
- Controls the other** - There is no equality in the relationship. What one partner says goes.
- Isolates the other partner** - One partner controls where the other one goes, and who the other partner sees and talks to.
- Forces sexual activity** - One partner forces the other to have sex.



# HANDOUT

## PATTERNS OF DATING ABUSE

Every relationship is unique, however, many people who are the target of dating abuse find the abuse occurs in a distinct pattern with three phases: tension building, explosion and honeymoon. Each phase can be as short as a few seconds or as long as several years.

### PHASE 1:

**Tension Building:** Things start to get tense between the two people. In this phase:

- The two people argue a lot.
- The abuser yells at the target for no reason.
- The abuser makes false accusations about the target.
- The target feels that she or he can't do anything right.
- The atmosphere is tense, as if things could blow up at any moment.

### PHASE 2:

**Explosion:** The tension is released in a burst of physical, sexual and/or verbal/emotional abuse. The abuser may:

- Scream and yell in a way that is frightening and/or humiliating.
- Hit, grab, shove, kick, slam the other person against the wall, etc.
- Throw objects.
- Threaten to hurt the other person or someone he or she cares about.
- Rape the other person or force him or her to go further sexually than he or she wants to.

### PHASE 3:

**Honeymoon:** The abuser tries to make the target stay in the relationship by apologizing and/or shifting the blame for the abuse onto someone or something else. The abuser may:

- Apologize and promise that the abuse will never happen again.
- Say "I love you."
- Buy the other person flowers or gifts.
- Accuse the other person of doing something to cause the abuse.
- Blame the abuse on other things such as alcohol, drugs or stress.

After the honeymoon phase, the tension starts to build again, leading to another explosion. Over time, the honeymoon phase may get shorter or even disappear, and the explosions may become more violent and dangerous. Some targets of dating abuse never experience the honeymoon phase—just the tension building and explosion phases. These phases do not happen in every abusive relationship. Someone may be experiencing dating abuse even if this pattern is not present.



**2019 Parent Support Services Faire**  
*Feria de Servicios de Apoyo para Padres 2019*  
**June 3, 2019 at Orange Coast College**  
*3 de junio del 2019 an el Orange Coast College*  
**8:30 a.m. to 12:00 p.m.**

DELAC invites you to attend the 2019 Parent Support Services Faire. Please complete the form below if you are committed to attend. OUSD will pay for the registration fee. Transportation will be provided by OUSD for those who need it. In order for OUSD to submit your registration we need this form completed and submitted by **April 1<sup>st</sup>**. Please, **ONLY** submit if you are 100% committed to attend, as space is limited. There are NO children allowed at this event. We apologize for any inconvenience.

*DELAC lo invita a asistir a la Feria de Servicios de Apoyo para Padres 2018. Por favor complete el siguiente formulario si está comprometido a asistir. OUSD pagará la tarifa de registro. El transporte será provisto por OUSD para aquellos que lo necesiten. Para que OUSD envíe su registro, necesitamos que complete y entregue este formulario antes del **1 de abril**. Envíelo SOLO si está 100% comprometido a asistir ya que el espacio está limitado. No se permiten NIÑOS en este evento. Nos disculpamos por cualquier inconveniencia.*

<b>First Name and Last Name / Nombre y apellido</b>	
<b>Phone Number / Número de teléfono</b>	
<b>Need Transportation / Necesita transporte</b>	<b>YES / NO</b>

*Feria de Servicios de Apoyo para Padres 2019*  
**June 3, 2019 at Orange Coast College**  
*3 de junio del 2019 an el Orange Coast College*  
**8:30 a.m. to 12:00 p.m.**

DELAC invites you to attend the 2019 Parent Support Services Faire. Please complete the form below if you are committed to attend. OUSD will pay for the registration fee. Transportation will be provided by OUSD for those who need it. In order for OUSD to submit your registration we need this form completed and submitted by **April 1<sup>st</sup>**. Please, **ONLY** submit if you are 100% committed to attend, as space is limited. There are NO children allowed at this event. We apologize for any inconvenience.

*DELAC lo invita a asistir a la Feria de Servicios de Apoyo para Padres 2018. Por favor complete el siguiente formulario si está comprometido a asistir. OUSD pagará la tarifa de registro. El transporte será provisto por OUSD para aquellos que lo necesiten. Para que OUSD envíe su registro, necesitamos que complete y entregue este formulario antes del **1 de abril**. Envíelo SOLO si está 100% comprometido a asistir ya que el espacio está limitado. No se permiten NIÑOS en este evento. Nos disculpamos por cualquier inconveniencia.*

<b>First Name and Last Name / Nombre y apellido</b>	
<b>Phone Number / Número de teléfono</b>	
<b>Need Transportation / Necesita transporte</b>	<b>YES / NO</b>

Rosetta Stone  
Distrito Escolar Unificado de Orange

Nombre Completo:

Número de Teléfono:

Correo Electrónico:

Escuela de estudiante (s):

Usare esta licencia de Rosetta Stone por lo menos 10 horas a la semana.

Firma: \_\_\_\_\_

Rosetta Stone  
Distrito Escolar Unificado de Orange

Nombre Completo:

Número de Teléfono:

Correo Electrónico:

Escuela de estudiante (s):

Usare esta licencia de Rosetta Stone por lo menos 10 horas a la semana.

Firma: \_\_\_\_\_

Orange Unified School District  
*Distrito Unificado de Orange*

DELAC Special Guest

*Invitado Especial de DELAC*

# Tony Orozco

**April/Abril**  
**26**

**Friday/Viernes**  
9:00 A.M. - 11:00A.M.

Tony Orozco will be our special guest at our April 26 DELAC meeting. He will be giving us a 1 hour presentation about what parents should know about Bullying.  
Don't miss out!

*Tony Orozco será nuestro invitado especial en nuestra reunión de DELAC del 26 de abril. Nos dará una presentación de 1 hora sobre lo que los padres deben saber sobre el bullying.  
¡No te lo pierdas!*