

# OUSD Commencement Ceremonies

**Event Location**  
**June 13, 2019**

# Fred Kelly Renovation

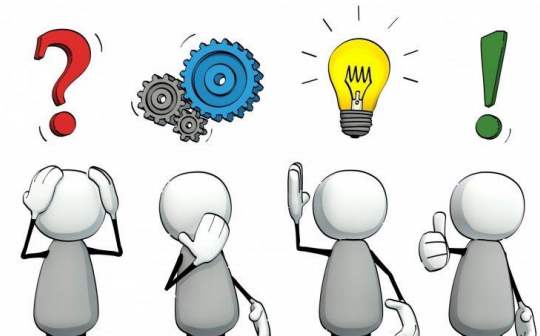


- The 14 month renovation scheduled to begin in January.
- Displaced events include: OUSD Commencement Ceremonies 2019, 3<sup>rd</sup> of July event 2019, Foundation Games 2019, and the entire 2019-20 football season.
- This is the first graduation since the mid-seventies that 3 of our 4 comprehensive high schools will not be able to graduate from Kelly Stadium.



# Considerations

- **Budget:** OUSD has spent approximately \$80,000.00 for commencement per year.
- **Moving Graduation from Kelly Stadium has a generational impact.**
- **This is a “one off” event. We need to make the venue special for our community.**
- **Size of venue.** Historically OUSD graduations range between 4000 and 7000 participants (10 to 12 guests per graduate).
- **Be able to handle the crowds and traffic of 4 consecutive events**
- **Parking**
- **Location**



# Process



- The office of Student and Community Services was tasked with securing a location.
- Brainstormed possible venues.
- Contacted venues
- Toured venues
- Received information from venues that met our needs and had availability

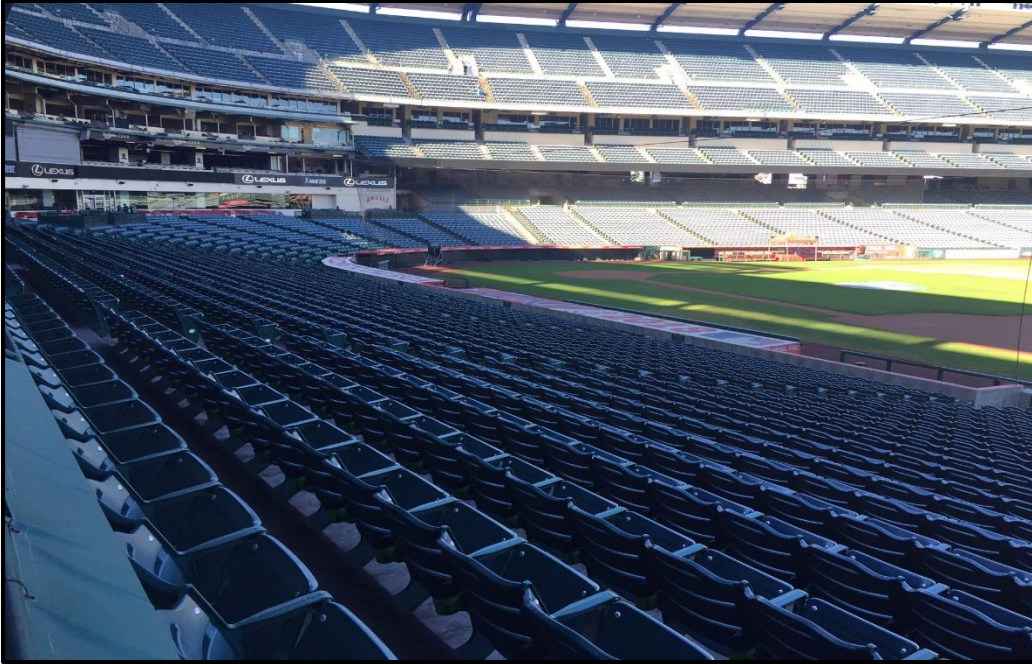


# Places Considered and Result

• Honda Center	Not Available possible Stanley Cup Finals 18,400
• Chapman University	Not Available 3,500
• Convention Center	Not Available 6,500
• Anaheim Sports Arena	Not Available 7,100
• City National Grove	Too Small 1,700
• Yorba Linda HS	Not Available 4,500
• Christ Cathedral	Too Small 2,700
• Titan Stadium	Buy out a soccer camp 10,000



# Best Available Options:



**Anaheim Stadium**



**Pacific Amphitheater**



# Angel Stadium

## Capacity 45,050

- Distance and Time:

- CHS            9.5 Miles        15 minutes
- VPHS          4.6 Miles        14 minutes
- OHS           2.7 Miles        9 minutes
- EMHS          7.7 Miles        14 minutes

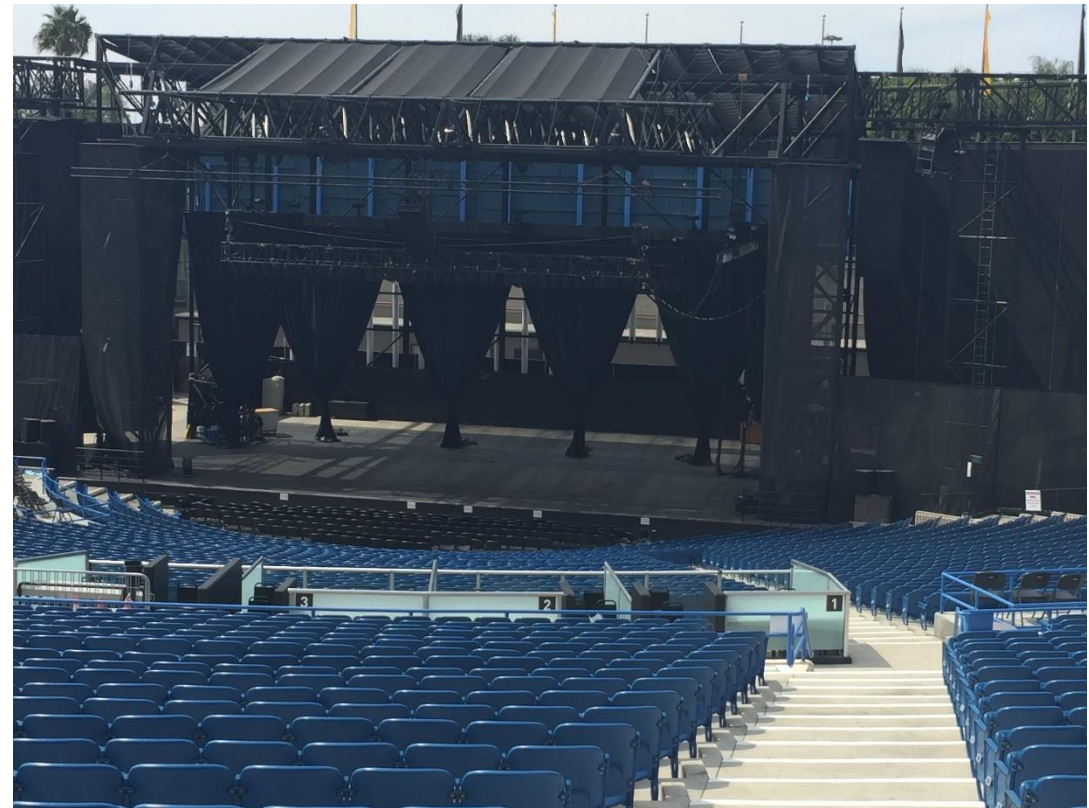
- Stadium Rental \$96,700
- Staging NTE \$15,000; Sound NTE \$10,000
- Total: NTE \$121,700



# Pacific Amphitheater

- Distance and Time:
  - CHS            18 Miles            23 minutes
  - VPHS           14 Miles            20 minutes
  - OHS            13 Miles            21 minutes
  - EMHS           12 Miles            18 minutes
- 
- Est. Cost \$80,304.50
  - Staging NTE \$10,000
  - Total NTE \$90,304.50

## Capacity 8,000





# Pros and Cons: Angel Stadium

## Pros

- Location
- Easier day
- Sounds better
- Partial Shade

## Cons

- Size
- Cost



# Pros and Cons: Pacific Amphitheater

## Pros

- Size
- Cooler
- Logistics of the Day
- Cost

## Cons

- Distance
- Loading



- Next Steps
- Questions?

