



Student Safety

A Multi-Department Approach

Student Safety

Multi-Department Approach to Student Safety

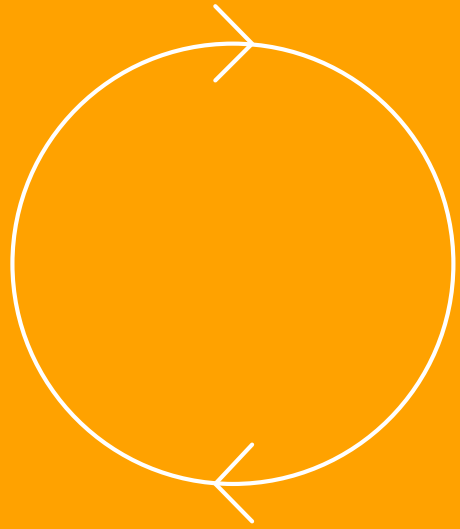


01 Safe School Plans, Training, Law Enforcement

02 Structure, Intervention, Recovery

03 Digital Citizenship, Security In Layers, Data Privacy

04 Safety Measures In Place and Proposed



Student & Community Services

Safe School Plans

Student & Community Services

01

Safe School Plan

- Each school turns in Comprehensive Safe School Plan
- Components include school description, compliance with education code safety requirements, crisis response plan and goal setting.

02

Law Enforcement

- Plans are shared with law enforcement, staff, and parents.
- Plans are reviewed by Student and Community Services

03

Drilling, Training and Advising

- Plans are utilized in conjunction with regular drilling, training, and advising.
- Provides the best chance for a positive outcome in the event of a crisis

04

Emergency Operations Plan

- OUSD is updating our district emergency plans.
- Communication is essential. District wide radio system for emergency use.

Training

Student & Community Services

01

Law Enforcement Campus Walks

- Student and Community Services, Orange Police, Orange County Sheriffs and OCIAC have walked OUSD campuses with staff looking for ways to improve overall campus safety

02

Site Vulnerabilities Assessments

- Each campus is unique and has different areas of strength and vulnerabilities
- Plans are in place to have all of OUSD schools complete by the end of this year

03

Teacher and Staff Crisis Training

- SCS has been offering and training staff in “Run – Hide – Fight”
- Teachers and staff are trained to survive a crisis by looking at the mental and tactical side of crisis management

04

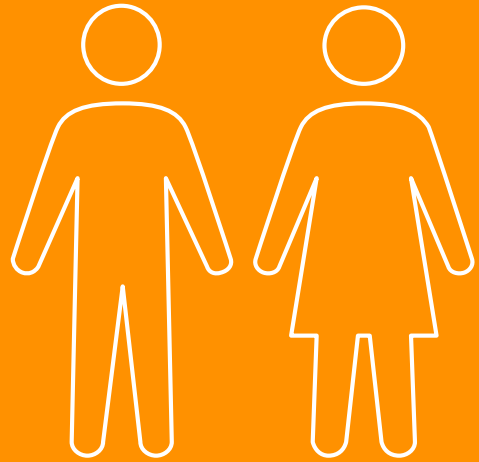
Continued SCS Training

- Student & Community Services personnel continue to train with SCS emergency responders and threat assessment experts

Relationships with Law Enforcement

Student & Community Services





Psychological Services

Psychological Services & Mental Health Team

Student Safety

32 SCHOOL PSYCHOLOGISTS

- Since 2013 we have increased our supports
- Psychologists are on campuses more time to support ALL student needs
- 2 HS Psychologists (2017-2018) / site
- Full time middle school Psychologist
- Increase in time at Elementary Level

8 ELEMENTARY MENTAL HEALTH COUNSELORS

- Counselors support ALL elementary schools
- Two cover our Alternative Ed. Sites

BEHAVIOR SUPPORT ASSISTANTS

- Support our most needed students (mostly our Behavior Programs)
- Support general education students that demonstrate most significant behaviors

Training

Psychological Services & Mental Health Team

- Crisis Prevention Institute (CPI)
- Trauma Informed Educator
- Eliminating Barriers
- Risk Assessment

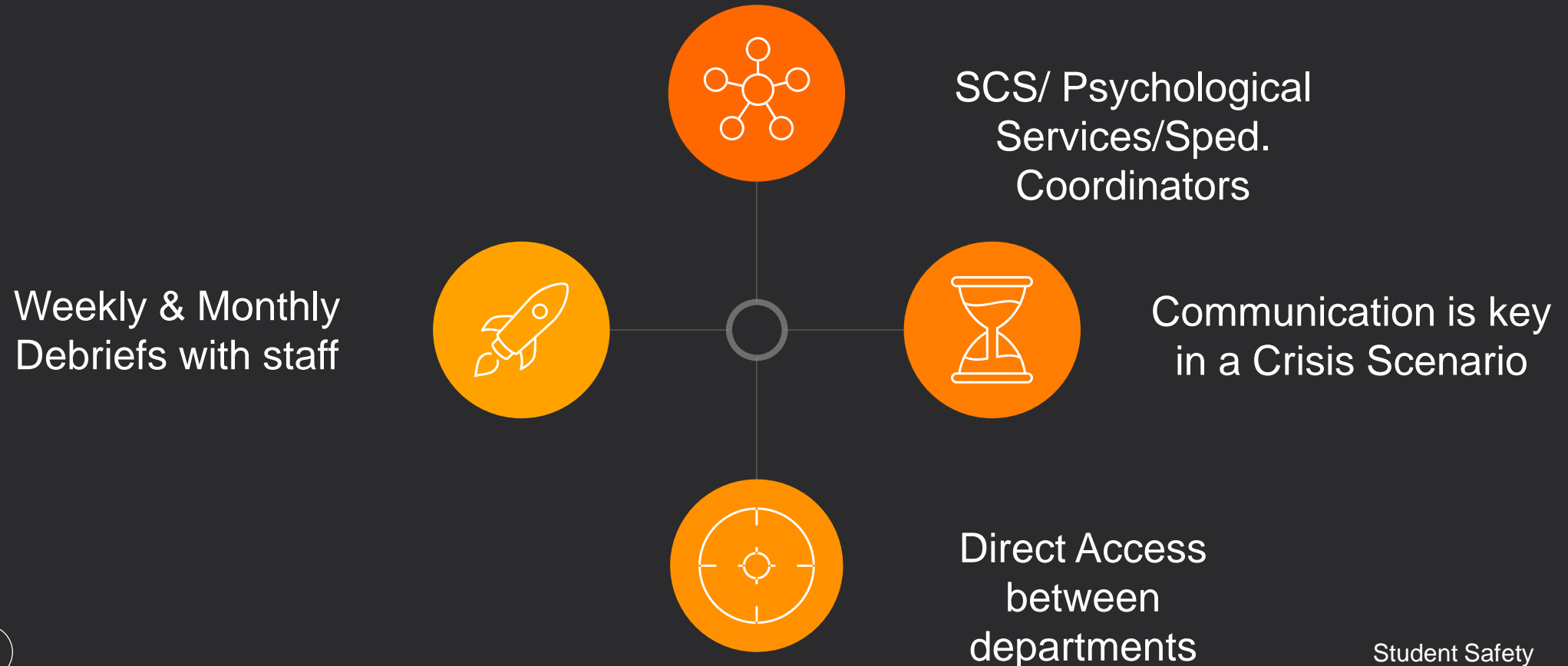
- Crisis Prevention Institute (CPI)
- Trauma Informed Educator
- Eliminating Barriers
- Risk Assessment

- 40 hours of Training
- Monthly Supervision (group)
- Monthly Supervision (individual)

MULTI-DEPARTMENTAL COMMUNICATION

Psychological Services & Mental Health Team

STUDENT COMMUNITY SERVICES ↔ PSYCHOLOGICAL SERVICES
STAFF



Embedded Student Supports

Psychological Services & Mental Health Team

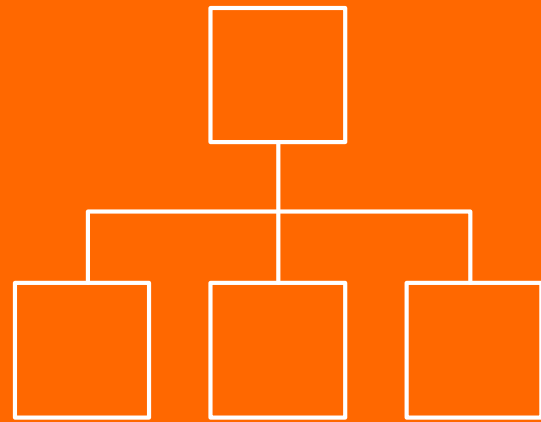
Teacher
Referrals to
Counselors and
Psychologists

CAST

Open Lines of
Communication
with District
Personnel

SST

Child Find
Obligation



Technology Services

Common Sense Media Digital Citizenship



01

Internet Safety

02

Cyberbullying & Digital Drama

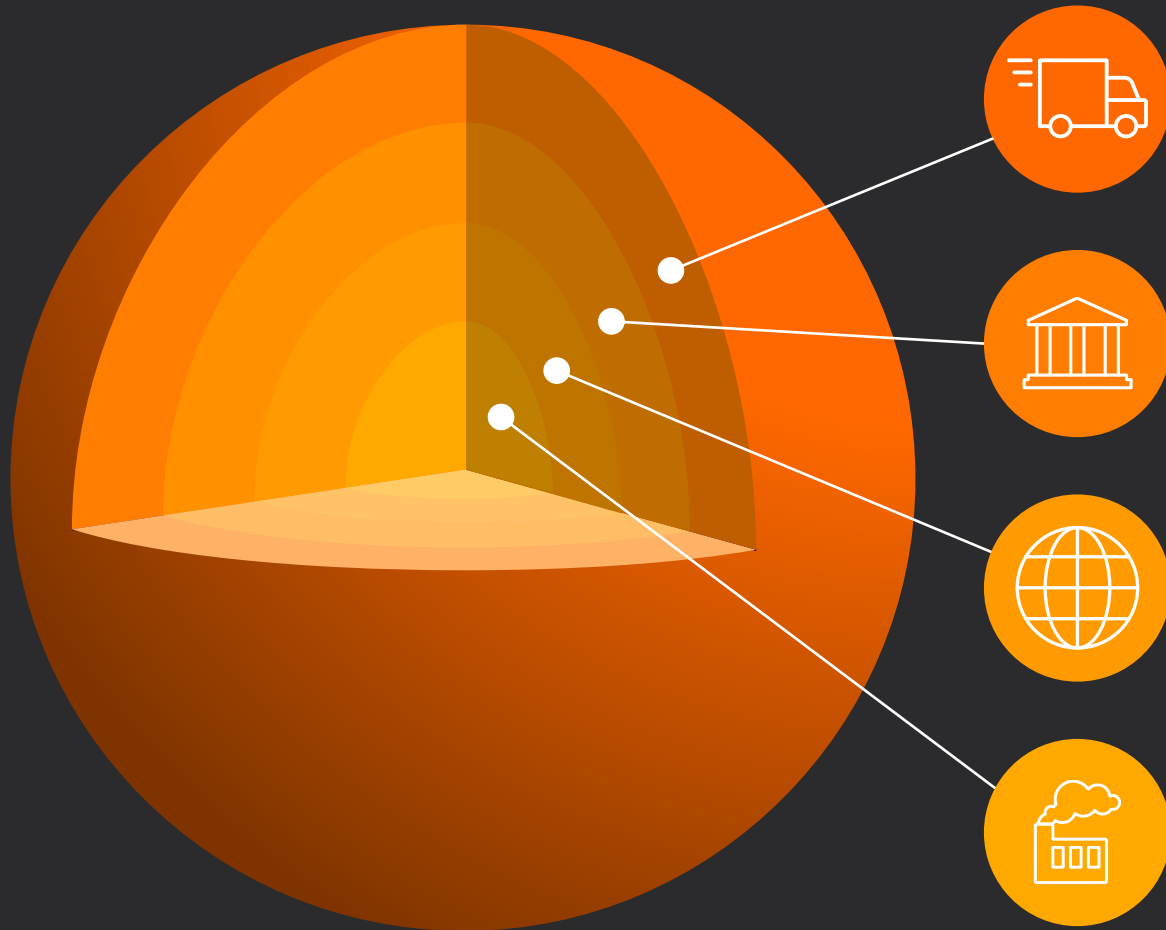
03

Privacy & Security

04

Digital Reputation

Security in Layers



Content Filtering Everywhere

Blocking internet resources by website



Monitoring Search Terms

Safety and security related search terms are flagged for site administrator review



Next Generation Anti-Virus

Machine learning based antivirus for users with privileged data access rights



Single Sign On

Reducing the use of easily predicted passwords. Enabling a password reset for all systems at once.

Student Data Privacy

Technology Services



Student Data Privacy
Alliance



CIS Top 20 Controls
Alignment



Dell Secureworks



Facilities, Maintenance & Operations

Safety Measures In Place Today

Facilities, Maintenance and Operations



Fire and Burglar Alarms at All OUSD Schools - Centrally Monitored



Perimeter and Door Locks Checked on a Annual Basis



OUSD Security Patrol for Nights and Weekends- Includes all Schools

Safety Measures In Place Today

Facilities, Maintenance and Operations



FIT and Annual Facilities Assessment Walks for Deferred Maintenance



Upgraded Lighting to LED and Added New Fixtures (2016-17)



Work Order System- Allows for Sites to Report and Track Safety Issues

Safety Measures- New or Proposed

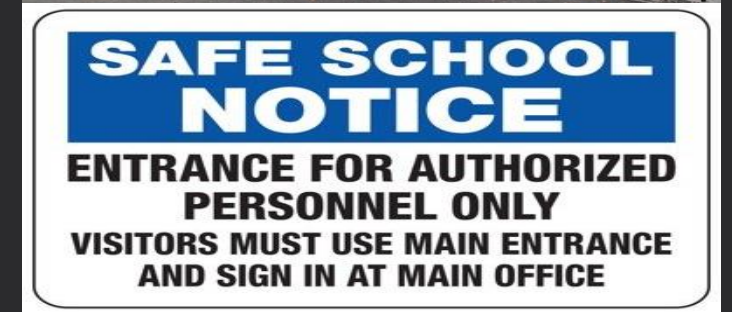
Facilities, Maintenance and Operations



Upgrade all CCTV Systems to IP Based Surveillance Cameras



Work with District Technical Experts on New Safety Plan



Improvements to Site Access Gates, Signage and Fencing as Needed