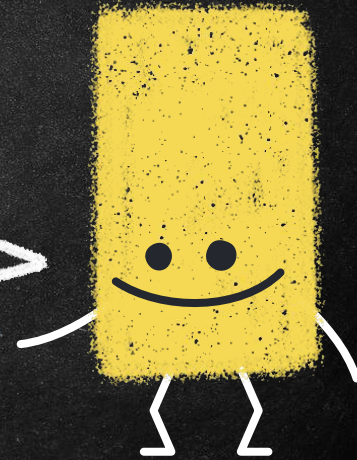


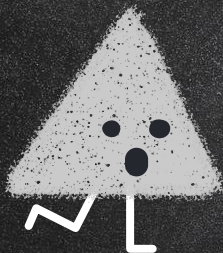
LCAP SURVEY RESULTS 2020-21



OFFICE OF ACCOUNTABILITY, EQUITY AND SCHOOL SUPPORT



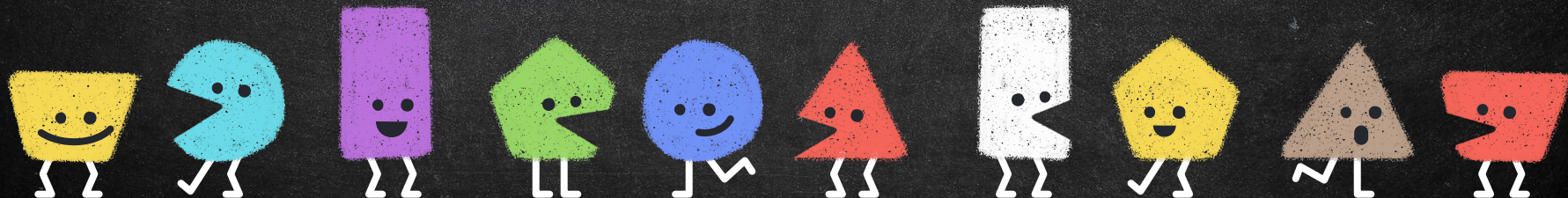
We were able to administer a total of
10,813
surveys within a four week window!



Parents= 4,019

Staff= 1,382

Students= 5,412



DEMOGRAPHICS OF RESPONDENTS

Out of all parents: 3rd grade had the highest number of respondents.

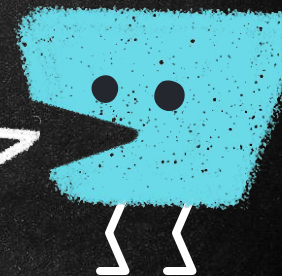
Out of all staff: 6th grade teachers had the highest number of respondents.

Out of all the students, the 5th and 6th grade students had the highest numbers that responded to survey.

Certificated made up 64% of the staff responses


Parents with only one child made up 67% of the responses

Parents of free and reduced priced meals made up the 2nd highest majority of respondents after parents that did not have a GATE, EL, Sped, or FRPM student

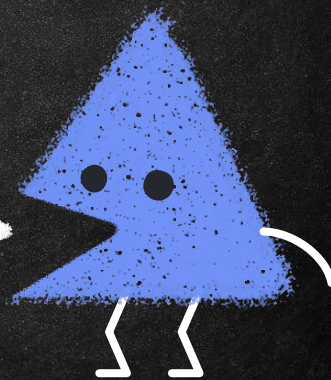


FOCUS AREAS:

OVERALL AVERAGE OF
% STRONGLY AGREE + % AGREE



FOCUS AREA	PARENTS	STAFF	STUDENTS
1.0	76%	75%	74%
2.0	82%	87%	73%
3.0	82%	87%	72%
4.0	77%	81%	72%



FOCUS AREA 1:

STRENGTH #1

TEACHERS
EFFECTIVELY USE
TECHNOLOGY AS AN
INSTRUCTIONAL
RESOURCE

PARENTS= 81%

STAFF= 88%

STUDENTS= 81%

STRENGTH #2

CONFIDENT THAT STUDENTS
WILL RECEIVE THE SUPPORT
THEY NEED IF THEY ARE
STRUGGLING ACADEMICALLY
OR AT RISK OF FALLING
BEHIND

PARENTS= 83%

STAFF= 81%

STUDENTS= 83%

AREA OF IMPROVEMENT

TECHNOLOGY
INFRASTRUCTURE IS
SUFFICIENT TO MEET
INSTRUCTIONAL NEEDS

PARENTS= 68%

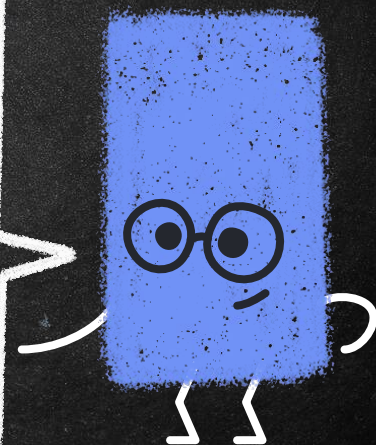
STAFF= 66%

STUDENTS= 62%



FOCUS AREA 1: AT THIS SCHOOL STUDENTS HAVE THE OPPORTUNITY TO BECOME A: (BASED UPON OUSD GRADUATE PROFILE)

	1st	2nd	3rd
Parents	Confident and respectful communicator	Socially responsible and civically minded citizen	Resilient and self-directed problem solver
Staff	Confident and respectful communicator	Resilient and self-directed problem solver	Socially responsible and civically minded citizen
Students	Confident and respectful communicator	Resilient and self-directed problem solver	Well informed and inquisitive critical thinker



7

FOCUS AREA 2:

STRENGTH

THE SCHOOL COMMUNICATES
EFFECTIVELY WITH
PARENTS/FAMILIES ABOUT
GRADES, ASSIGNMENTS, AND
STUDENTS' ACADEMIC
PERFORMANCE

PARENTS= 85%

STAFF= 93%

STUDENTS= 82%

AREA OF IMPROVEMENT

THE SCHOOL REGULARLY
INFORMS PARENTS OF WAYS
THEY CAN BE INVOLVED AT
SCHOOL

PARENTS= 78%

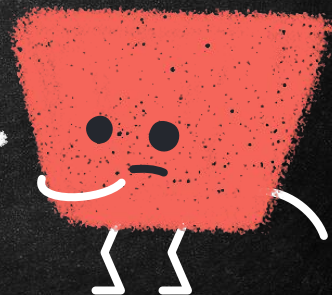
STAFF= 84%

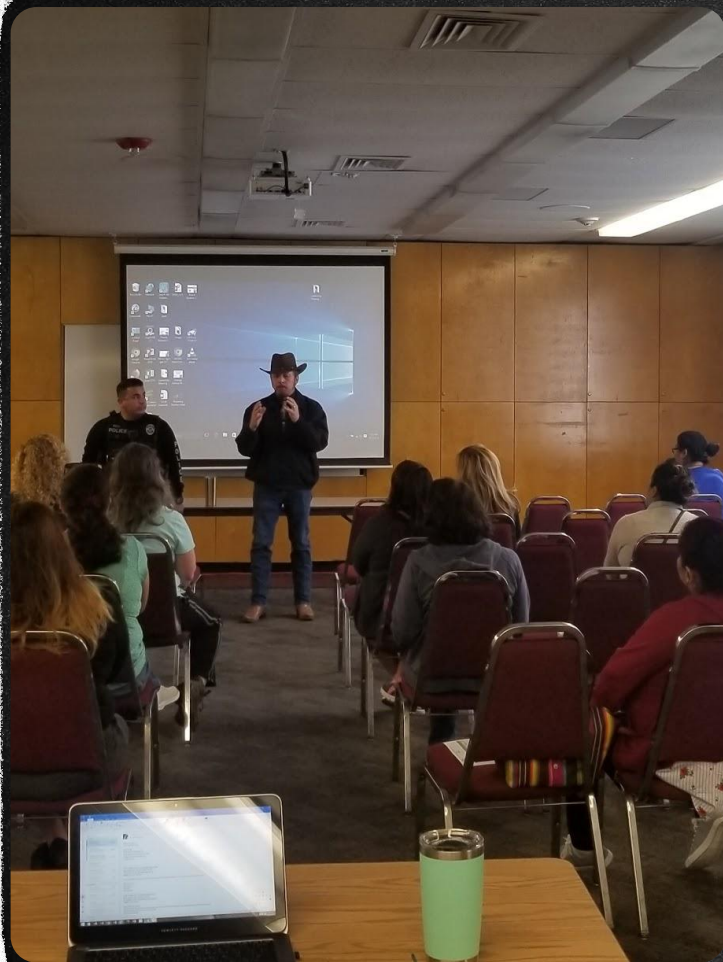
STUDENTS= N/A



FOCUS AREA 2: IN THIS SCHOOL, PARENTS ARE GIVEN ENOUGH INFORMATION TO:

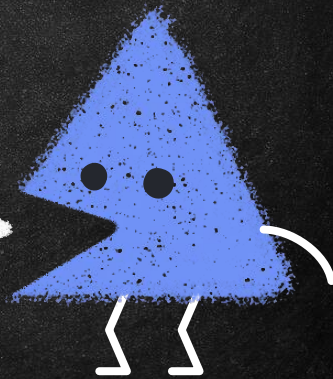
	1st	2nd	3rd
Parents	Participate in school surveys	Support students to attend school regularly	Ensure their child's safety when they are online and/or using technology
Staff	Support students to attend school regularly	Participate in school surveys	Provide academic/homework help
Students	N/A	N/A	N/A





INTEREST IN PARENT EDUCATION WORKSHOPS: TOP 2

1. Social and emotional needs of children
2. Digital learning platforms, apps and software-how to access them and support at home



WHAT WOULD HELP PARENTS TO BECOME MORE INVOLVED AT SCHOOL?

1. MORE INFORMATION ON INVOLVEMENT OPPORTUNITIES
2. MORE INFORMATION ON HOW TO SUPPORT STUDENTS AT HOME



FOCUS AREA 3:

STRENGTH

STUDENTS FEEL SAFE IN
SCHOOL (ONLINE OR
IN-PERSON)

PARENTS= 93%

STAFF= 94%

STUDENTS= 84%

AREA OF IMPROVEMENT

STUDENT DISCIPLINE POLICIES
ARE CONSISTENTLY
ENFORCED

PARENTS= 69%

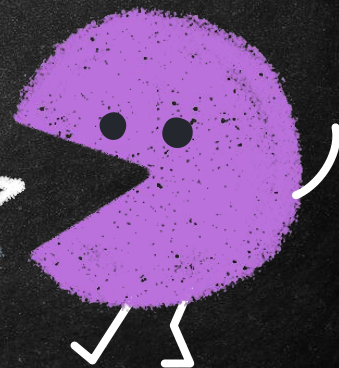
STAFF= 73%

STUDENTS= 54%



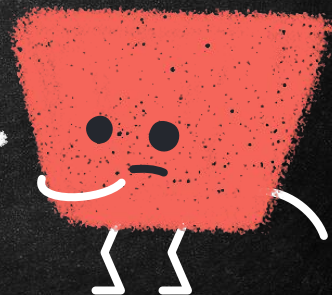
FOCUS AREA 3: IN THIS SCHOOL, STUDENTS HAVE PLENTY OF OPPORTUNITIES TO PARTICIPATE IN ENGAGING PROGRAMS:

	1st	2nd	3rd
Parents	STEAM (Science, Tech, Engineering, Arts and Math)	VAPA (Visual and Performing Arts)	Activities/Clubs/Student leadership/ASB
Staff	AVID	VAPA (Visual and Performing Arts)	STEAM (Science, Tech, Engineering, Arts and Math)
Students	VAPA (Visual and Performing Arts)	STEAM (Science, Tech, Engineering, Arts and Math)	Activities/Clubs/Student leadership/ASB



FOCUS AREA 3: STUDENTS ARE ENCOURAGED TO PARTICIPATE IN: (HIGH SCHOOL ONLY RESPONDED)

	1st	2nd	3rd
Parents	AP/IB Courses	SAT/PSAT	CTE courses
Staff	CTE courses	A-G courses	AP/IB Courses
Students	AP/IB Courses	SAT/PSAT	CTE courses



FOCUS AREA 4:

STRENGTH

THE SCHOOL MAINTAINS
THE BUILDING, CLASSROOMS
AND GROUNDS

PARENTS= 80%

STAFF= 82%

STUDENTS= 80%

AREA OF IMPROVEMENT

THE SCHOOL HAS
FACILITIES WITH
UP-TO-DATE TECHNOLOGY

PARENTS= 71%

STAFF= 69%

STUDENTS= 68%



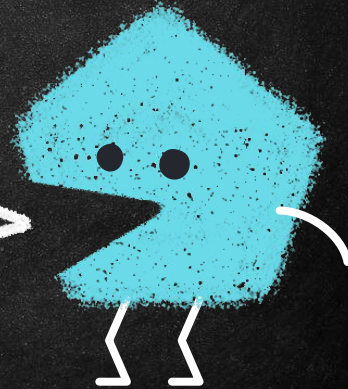
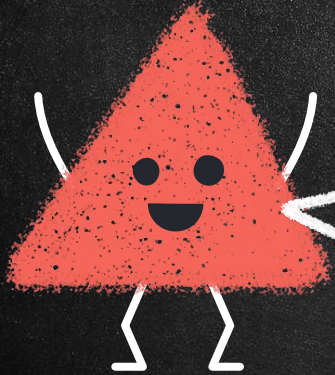
FOCUS AREA 4.0

ONE AREA OF CONCERN

THE SCHOOL IS CLEAN:

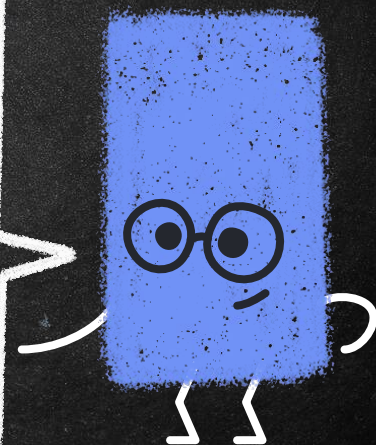
PARENTS	STAFF	STUDENTS
81%	92%	67%

25% difference in perception between staff and students

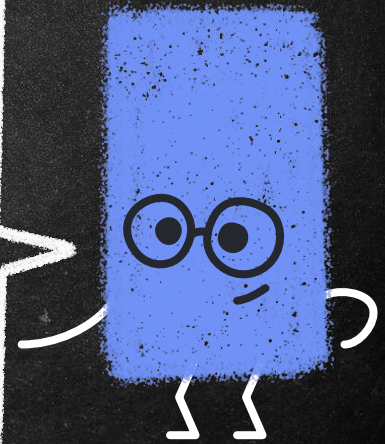


FOCUS AREA 4: HOW WELL DO THE FOLLOWING RESOURCES HELP STUDENTS PLAN FOR COLLEGE AND/OR CAREER:

	Best	Next	Least
Parents	Meeting with counselor	<ul style="list-style-type: none"> College workshops Classes that offer real life experiences Financial Aid/Scholarships workshops 	Internships
Students	Classes that offer real life experiences	<ul style="list-style-type: none"> College workshops Internships Financial aid/Scholarships workshops 	Meeting with counselor



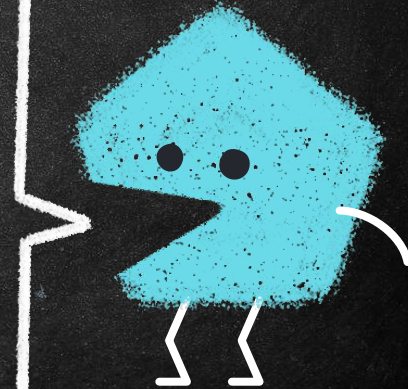
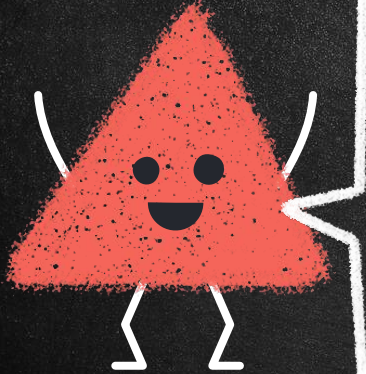
When asked about priorities for focusing
our resources.....



FOCUS AREA 1:

PRIORITY AREAS (FOR PLANNING PURPOSES)

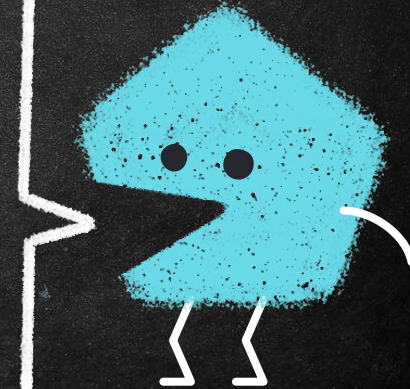
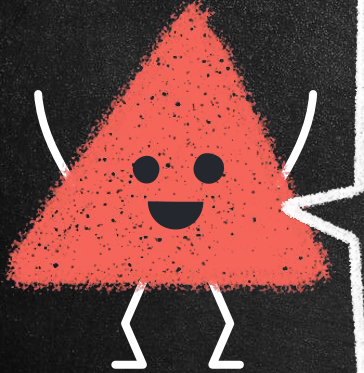
PARENTS	STAFF	STUDENTS
<ul style="list-style-type: none">• Access to enrichment activities• College and career preparedness• Equitable access to programs and classes	<ul style="list-style-type: none">• Intervention support• Access to enrichment activities• College and career preparedness	<ul style="list-style-type: none">• Access to enrichment activities• College and career preparedness• VAPA



FOCUS AREA 2:

PRIORITY AREAS (FOR PLANNING PURPOSES)

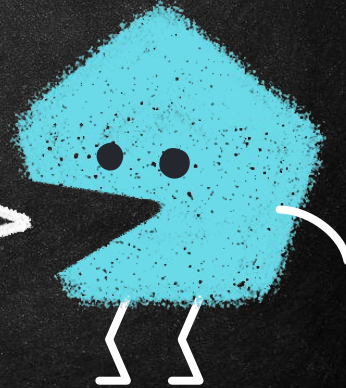
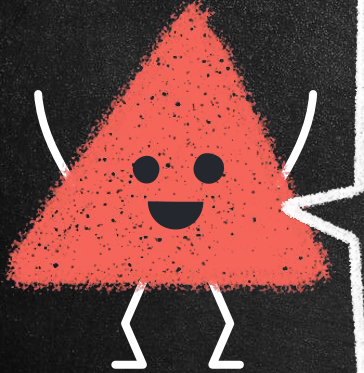
PARENTS	STAFF	STUDENTS
<ul style="list-style-type: none">• Parent family workshops• Establishing partnerships within the community• Communication with home	<ul style="list-style-type: none">• Parent family workshops• Establishing partnerships within the community• Communication with home	<ul style="list-style-type: none">• Parent family workshops• Establishing partnerships within the community• Communication with home



FOCUS AREA 3:

PRIORITY AREAS (FOR PLANNING PURPOSES)

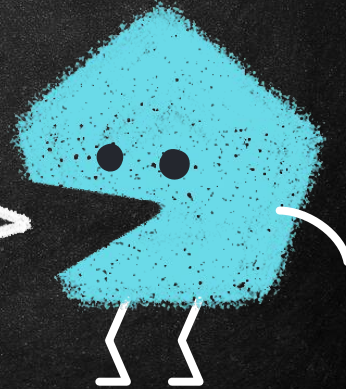
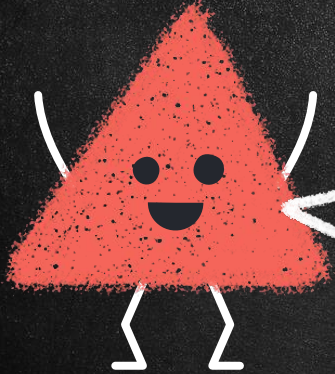
PARENTS	STAFF	STUDENTS
<ul style="list-style-type: none">• Student wellness• Anti-bullying• Safety protocols	<ul style="list-style-type: none">• Student wellness• Anti-bullying• Attendance policies	<ul style="list-style-type: none">• Student wellness• Anti-bullying• Safety protocols



FOCUS AREA 4:

PRIORITY AREAS (FOR PLANNING PURPOSES)

PARENTS	STAFF	STUDENTS
<ul style="list-style-type: none">• Access to technology• Facility improvements• Facility cleanliness	<ul style="list-style-type: none">• Access to technology• Facility improvements• Facility cleanliness	<ul style="list-style-type: none">• Access to technology• Facility improvements• Facility cleanliness





THANK YOU

For your ongoing support of the LCAP
process!

