

# SUMMER MAINTENANCE PROJECTS 2016



Facilities, Maintenance and Operations Department

October 26, 2016

# BACKGROUND



- **December 11, 2014** - The Board approved increasing the Deferred Maintenance Budget to improve the Districts School Facilities.
- **January 21, 2016** - The Board approved Deferred Maintenance projects including Asphalt, Roofing, Painting, Flooring, Fire Alarm, Restroom Renovations and Field Improvements

# ASPHALT PROJECT LOCATIONS



## ➤ Remove and Replace Projects:

*Elementary Schools:* Handy, Jordan, Linda Vista, Palmyra, Villa Park

*High Schools:* Canyon Hills/Canyon High School, Villa Park

*Other:* District Office, Maintenance Yard

## ➤ Slurry/Seal Coat Projects:

*Elementary Schools:* Anaheim Hills, Cambridge, Canyon Rim, La Veta, Prospect, Running Springs

*High Schools:* Orange, Villa Park

# TYPICAL REPLACEMENT (VILLA PARK HIGH SCHOOL)

Before



After

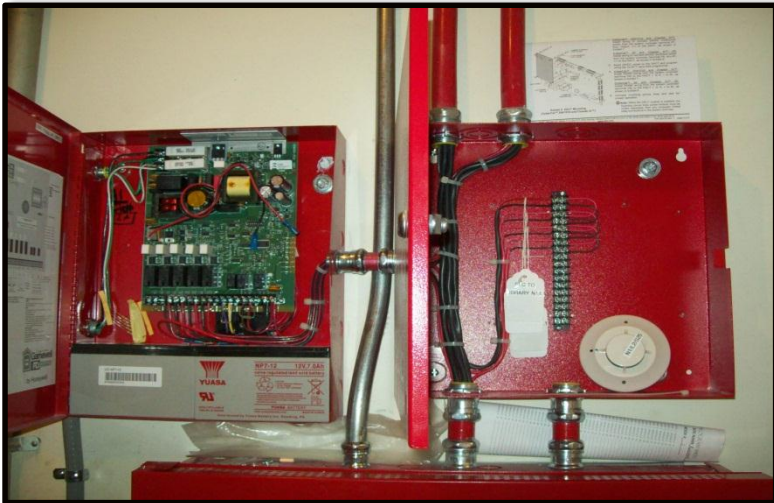




# TYPICAL SEAL COATING/SLURRY (RUNNING SPRINGS ES)



# FIRE ALARMS LOCATIONS



- Richland – New Fire Alarm System Completed
- District Office – New Fire Alarm System Completed



# RESTROOM LOCATIONS

- **El Modena High School**
- **Canyon High School**
- **Villa Park High School**





# EL MODENA HIGH SCHOOL



Before



After





# CANYON HIGH SCHOOL



Before



After





# VILLA PARK HIGH SCHOOL



Before



After



# FLOORING LOCATIONS



- Imperial Elementary School
- La Veta Elementary School
- Linda Vista Elementary School
- Nohl Canyon Elementary School
- Palmyra Elementary School
- Serrano Elementary School
- Villa Park Elementary School





# IMPERIAL ELEMENTARY

Before



After



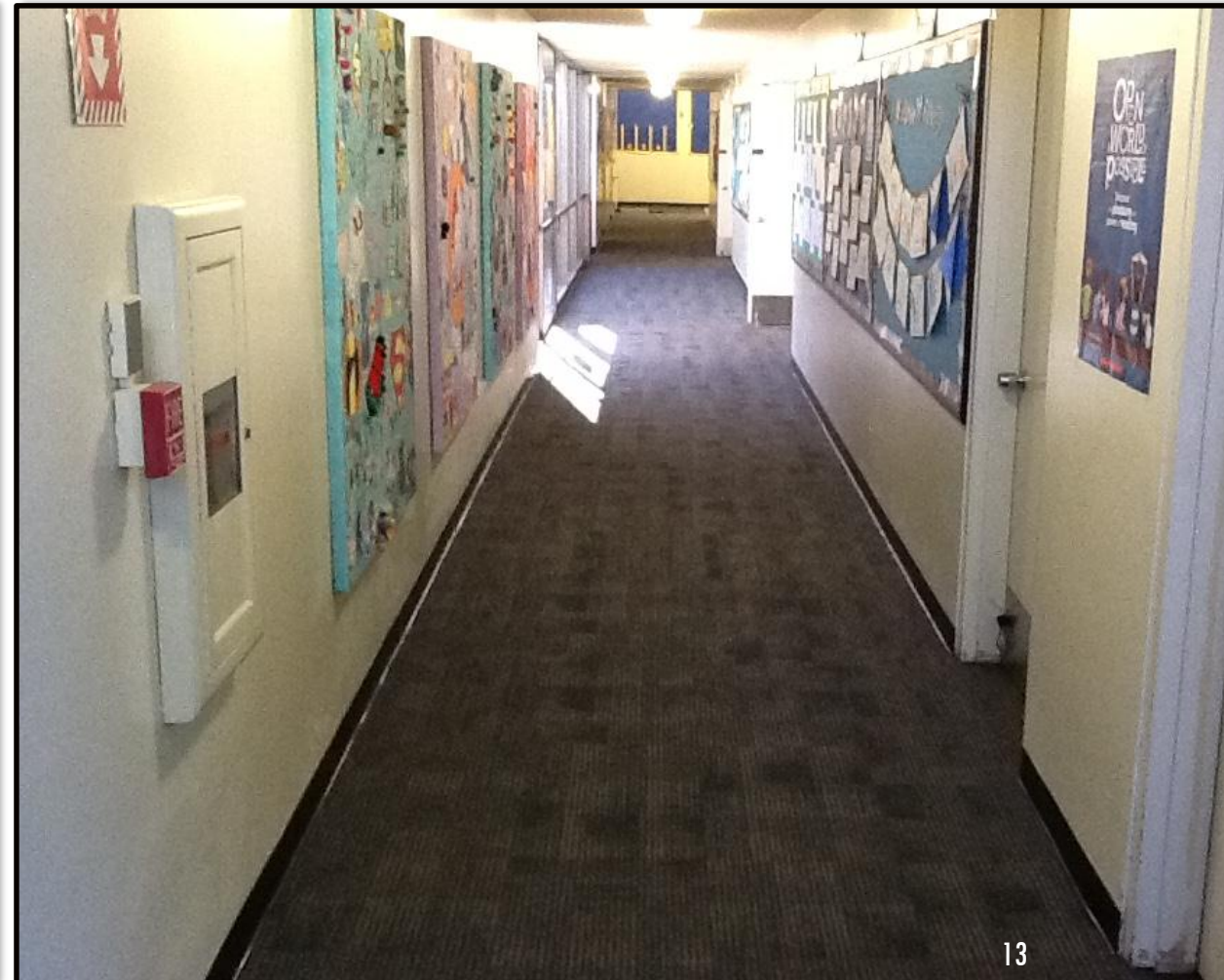


# LINDA VISTA ELEMENTARY

Before



After





# NOHL CANYON ELEMENTARY

Before



After





# SERRANO ELEMENTARY

Before

After



# VILLA PARK ELEMENTARY

Before



After





# EXTERIOR PAINT LOCATIONS



- Canyon Rim Elementary School
- Linda Vista Elementary School
- Palmyra Elementary School
- El Modena High School

- **LUNCH TABLES:**

- Esplanade ES, Fletcher ES, La Veta ES, Yorba MS, Lampson ES  
Cerro Villa MS





# LINDA VISTA ELEMENTARY

Before



After





# PALMYRA ELEMENTARY

Before



After





# INTERIOR PAINTING LOCATIONS



- California Elementary School
  - Main Office
- Cerro Villa Middle School
  - Auditorium, Band and Choir Rooms
  - 101, 114, 116, 118, 119, 121, 122
- Fairhaven Elementary School
  - Main Office
- West Orange Elementary School
  - Main Office



# CERRO VILLA MIDDLE SCHOOL

Before



After

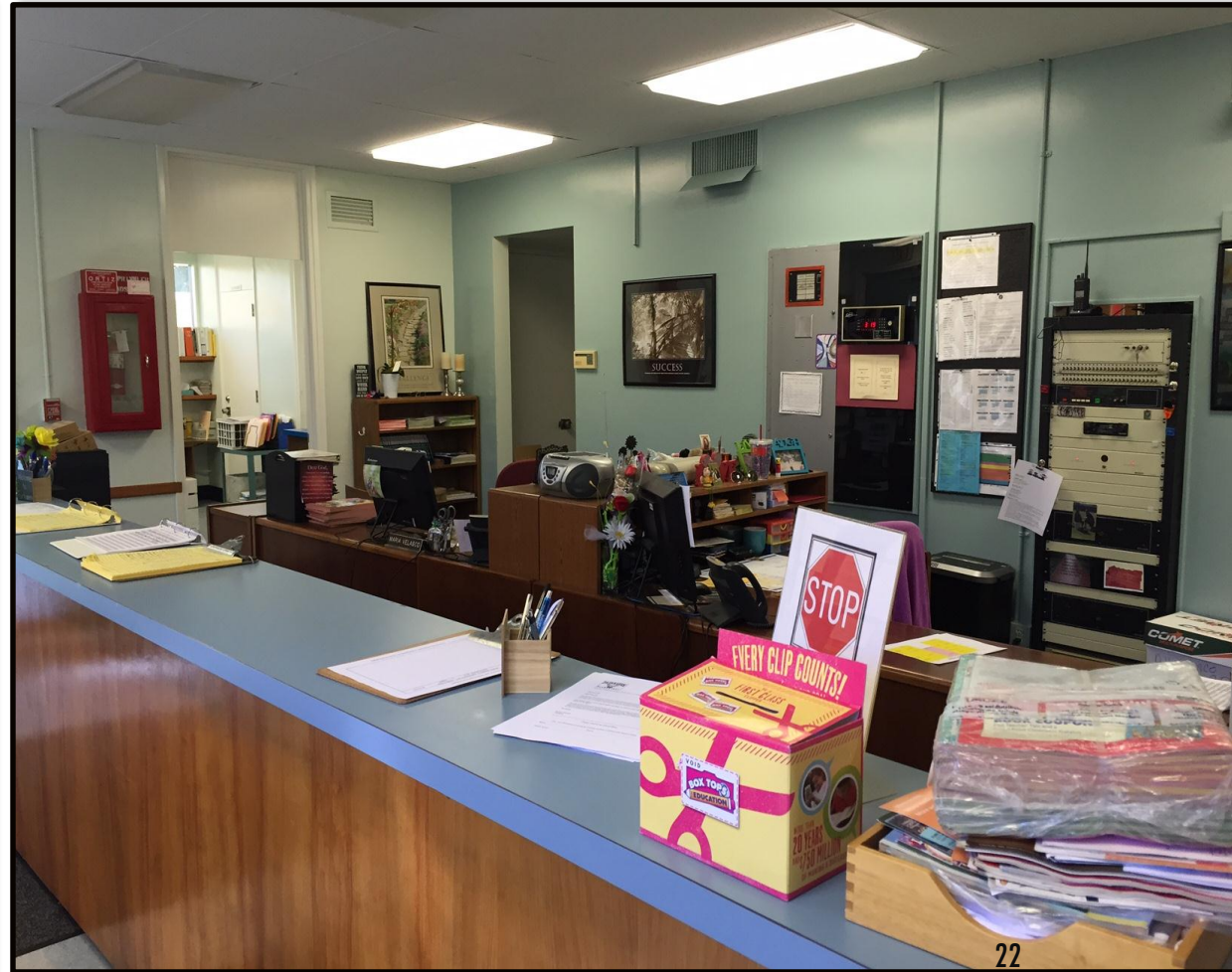




# FAIRHAVEN ELEMENTARY

Before

After



# ROOFING LOCATIONS



- **10-Year Roof Coating**
  - **Linda Vista Elementary**
  - **Orange Pre-K**
  - **Taft Elementary**
  - **Villa Park Elementary**





# LINDA VISTA ELEMENTARY

Before



After





# ORANGE PRE-K

Before



After





# TAFT ELEMENTARY

Before

After



# FIELD IMPROVEMENT LOCATIONS



- Cambridge Elementary School
- Crescent Elementary School
- Lampson Elementary School
- Nohl Canyon Elementary School
- Taft Elementary School
- Canyon High School
- El Modena High School
- Orange High School
- Villa Park High School





# FIELD IMPROVEMENTS

## TASKS COMPLETED-

- Hollow Tine Core Aeration
  - To 6" Depth
- Broadleaf Weed Control
  - Kills clover and other weeds
- Fertilization
  - 46-0-0, High nitrogen blend
- Hydro-seeding
  - Bermuda, Kentucky Bluegrass, Winter Rye Blend



# CANYON HIGH SCHOOL

Before



After





# CRESCENT ELEMENTARY

Before



After





# EL MODENA HIGH SCHOOL

Before



After





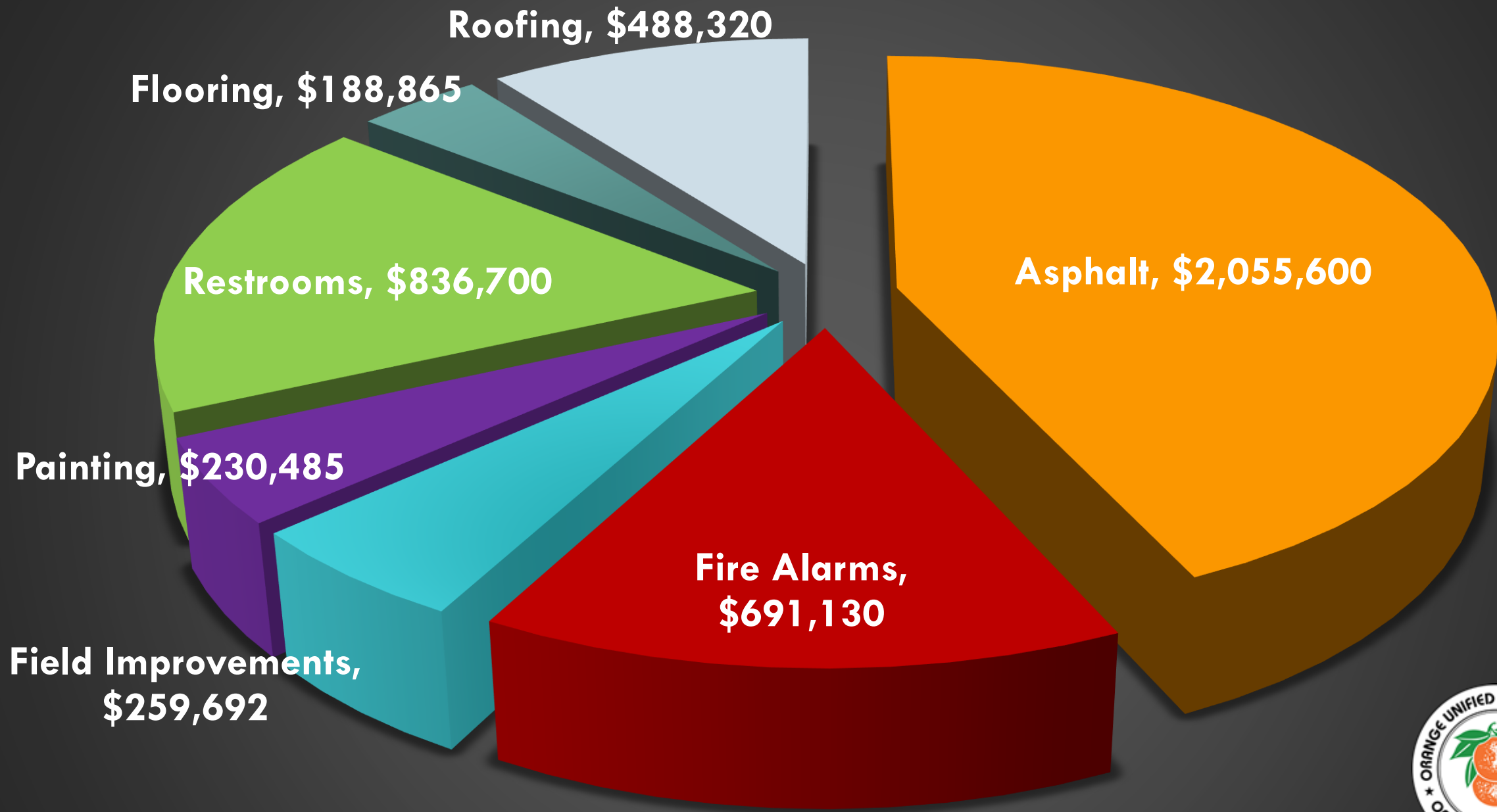
# ORANGE HIGH SCHOOL

Before



After





**Total Improvements: \$4,750, 792**







# EXECUTIVE SUMMARY

- 55 Projects Successfully Completed
- \$4.75 Million

**THE SCHOOL SITES AND FACILITIES/MAINTENANCE DEPARTMENT  
WOULD LIKE TO THANK THE ADVISORY COMMITTEE FOR THEIR  
SUPPORT.**

**THANKS TO STAFF FOR THEIR HARD WORK!**

THANK YOU!

