

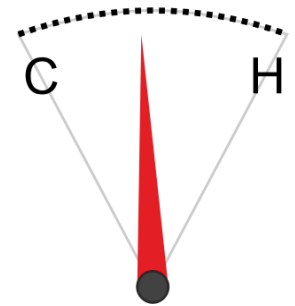
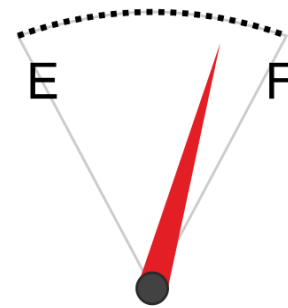
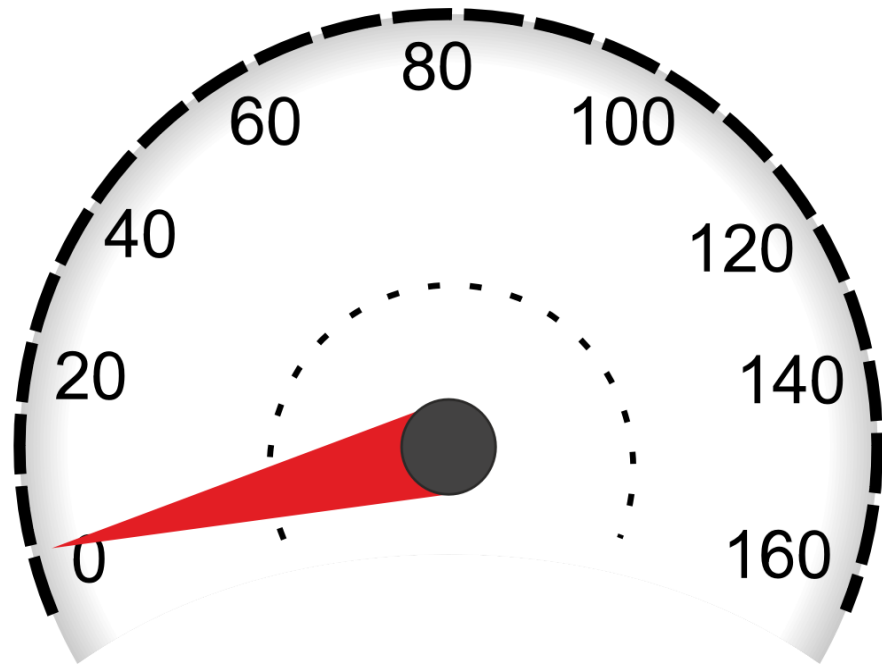
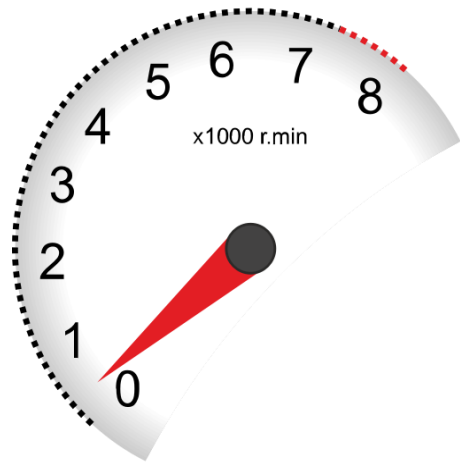
CALIFORNIA SCHOOL DASHBOARD

Overview of New Accountability System

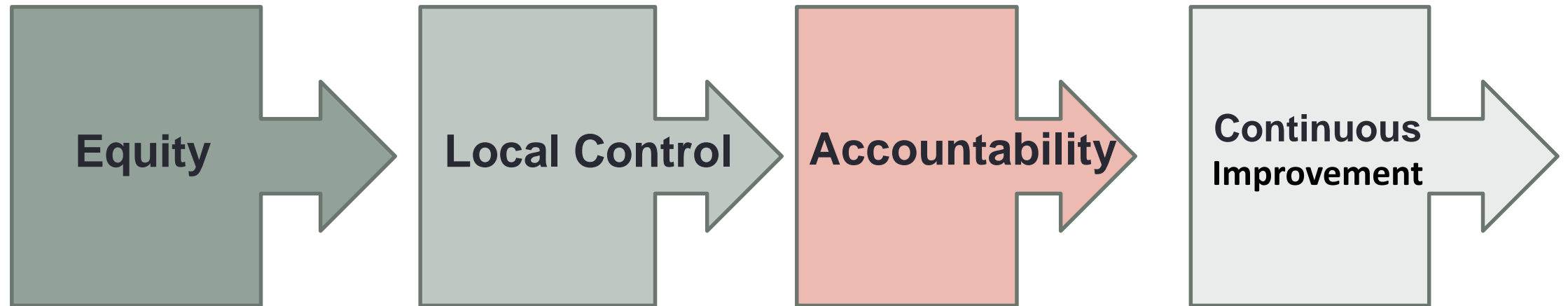


Purpose of California School Dashboard

The State of California is *field testing* a new website designed to help communities across the state access important information about K-12 districts and schools-including ours. Called the California School Dashboard, the site features easy-to-read reports on multiple measures of schools success, including test scores, graduation rates, English Learner progress and suspension rates.




California's School Improvement System



Indicators by Priority Areas

Priority Area	State Indicator	Local Indicator
Basic Services or Basic Condition at schools Priority 1		Basics Conditions at School
Implementation of State Academic Standards Priority 2		Implementation of State Academic Standards
Parental Engagement Priority 3		Parent Engagement
Student Achievement Priority 4	★ Academic Indicator ★ English Learner Indicator	
Student Engagement Priority 5	★ Chronic Absence Indicator ★ Graduation Rate Indicator*	
School Climate Priority 6	★ Suspension Rate Indicator	Local Climate Survey
Access to a Broad Course of Study Priority 7	College/Career Indicator*	
Outcomes in a Broad Course of Study Priority 8	College/Career Indicator*	

State Versus Local Performance

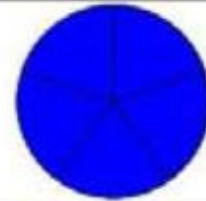
State	Local
	Met Not Met Not Met for Two or More Years
Performance determined by state based on the 5X5 colored table	Performance determined by LEA based on state-created standards

Five Status and Five Change Levels

Five Status Levels	Five Change Levels
Very High	Increased Significantly
High	Increased
Medium	Maintained
Low	Declined
Very Low	Declined Significantly

Performance Levels

Blue
(Highest Performance)



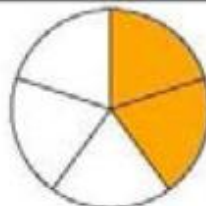
Green



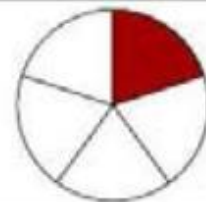
Yellow



Orange



Red
(Lowest Performance)








5x5 Color Coded Table






- The model uses percentiles to create a 5x5 grid that combine **Status** and **Change** that are equally valued in making an overall determination for a **Performance Category** (represented by a color) for each indicator.
- The model will be applied to all LEAs, schools (except Alternative Schools)

Level	Declined Significantly (Change)	Declined (Change)	Maintained (Change)	Increased (Change)	Increased Significantly (Change)
Very High (Status)	Yellow	Green	Blue	Blue	Blue
High (Status)	Orange	Yellow	Green	Green	Blue
Medium (Status)	Orange	Orange	Yellow	Green	Green
Low (Status)	Red	Orange	Orange	Yellow	Yellow
Very Low (Status)	Red	Red	Red	Orange	Yellow

The Equity Report provides the performance levels for the state indicators and identifies the total number of student groups represented in each indicator, in addition to the number of student groups in red/orange.

State Indicators	All Students Performance	Total Student Groups	Student Groups in Red/Orange
Chronic Absenteeism	N/A	N/A	N/A
Suspension Rate (K-12)		11	0
English Learner Progress (K-12)		1	0
Graduation Rate (9-12)		9	2
College / Career		N/A	N/A
English Language Arts (3-8)		10	1
Mathematics (3-8)		10	1
Local Indicators	Ratings		
Basics (Teachers, Instructional Materials, Facilities)	N/A		
Implementation of Academic Standards	N/A		
Parent Engagement	N/A		
Local Climate Survey	N/A		

The status and change report provides the performance level for all students on all state indicators and identifies the status for the current year and change relative to the prior year for each state indicator.

State Indicators	All Students Performance	Status	Change
Chronic Absenteeism	N/A	N/A	N/A
Suspension Rate (K-12)		Medium 2.8%	Declined -0.8%
English Learner Progress (K-12)		Medium 74.7%	Maintained +0.6%
Graduation Rate (9-12)		Very High 95.3%	Maintained -0.2%
College / Career		N/A	N/A
English Language Arts (3-8)		Medium 0.1 points below level 3	Maintained +6.8 points
Mathematics (3-8)		Medium 23.9 points below level 3	Increased +5.9 points

Questions?

Contact Information:

Elena Rodriguez

Administrative Director of Accountability and Special
Programs

(714) 628-5405

erodriguez@orangeusd.org