

**ORANGE UNIFIED SCHOOL DISTRICT
BOARD OF EDUCATION • REGULAR MEETING
DISTRICT EDUCATION CENTER , BLDG. H
1401 NORTH HANDY STREET • ORANGE, CA**

**THURSDAY • JANUARY 17, 2008
6:30 P.M. • CLOSED SESSION
7:30 P.M. • REGULAR SESSION**

Members of the audience are invited to address the Board of Education on agenda items when the Board considers them. Speakers are limited to three (3) minutes, with a maximum of twenty (20) minutes per topic. Persons wishing to address the Board are requested to complete and submit a blue speaker card, available on the information table, before the meeting begins.

A G E N D A

(The complete agenda is available online at www.orangeusd.k12.ca.us/board/calendar.asp)

1. **CALL MEETING TO ORDER - 6:30 P.M.**
2. **ESTABLISH QUORUM**
3. **PUBLIC COMMENT ON CLOSED SESSION AGENDA ITEMS**
4. **ADJOURN TO CLOSED SESSION**
 - A. **PUBLIC EMPLOYEE DISCIPLINE/DISMISSAL/RELEASE**
Government Code 54957
 - B. **CONFERENCE WITH LABOR NEGOTIATORS**
Government Code 54957.6
Agency Negotiators: Ed Kisse; Jamie Brown; Spencer Covert, Parker & Covert LLP
Employee Organizations: California School Employees Association
Agency Designee Representatives: Superintendent; Spence Covert, Parker & Covert LLP
Unrepresented Employees: Classified/Certificated Leadership Employees, including Assistant Superintendents
5. **CALL TO ORDER - REGULAR SESSION - 7:30 P.M.**
Please turn off pagers and cell phones during the meeting.

Mission Statement: *The Orange Unified School District, being committed to planning for continual improvement, will offer a learning environment of excellence, with high expectations, to provide each student with the opportunity to be able to compete in the global economy.*
6. **PLEDGE OF ALLEGIANCE**
7. **REPORT OF CLOSED SESSION DECISIONS AS REQUIRED BY THE BROWN ACT**
8. **ADOPTION OF AGENDA**

9. ANNOUNCEMENTS AND ACKNOWLEDGMENTS

- A. Superintendent's Report 1
- B. Board President's Report 1
- C. Board Recognition of Students, Staff, and Community 1
Outstanding Customer Service Award 2
- D. Board Proclamation: Make Kindness Contagious Month - February 3-4

10. APPROVAL OF MINUTES

November 17, 2007 (Regular Meeting)

11. PUBLIC COMMENT: Non-Agenda Items

Members of the audience may address the Board of Education on items not on the agenda that are within the Board's subject matter jurisdiction. Speaking time is limited to three (3) minutes per speaker with a maximum of twenty (20) minutes per topic. Persons wishing to address the Board should complete and submit a blue Public Comment card, available on the information table, prior to the meeting. Matters not on the agenda may neither be acted on nor discussed by the Board, but will be researched and responded to in any one of the following ways: 1) by telephone after research; 2) by mail after research; or 3) at a subsequent Board meeting as an agenda item.

12. ACTION ITEMS

- A. Approval to Extend the Term of Employment for Assistant Superintendents 5
- B. Tentative Agreement between the District and Orange Unified Education Association for 2007-08 Reopener Negotiations and AB 1200 Information 6-8
- C. Salary Schedule Adjustment for Leadership Employees and AB 1200 Information 9-10
- D. Board Authority to Establish Committees 11-12

13. INFORMATION/DISCUSSION ITEMS

- A. Annual Audit Report for Fiscal Year 2006-07 13
- B. Second Quarter Status Report for 2007-08, Year Two, of the Three-Year Strategic Plan 14-18

14. CONSENT ITEMS

Consent items are acted upon by one motion. However, any such item can be considered separately at a Board member's request, in which case it will be acted upon following approval of the Consent Items.

BUSINESS SERVICES

- A. Purchase Orders List 19
- B. Warrants List 20
- C. Gifts 21-22
- D. Contract Services Report - Business Services 23-24
- E. Acceptance of Completed Contracts and Filing of Notices of Completion 25-26
- F. Resolution 20-07-08 Declaring the District's Intention to Convey a Grant Easement to Pacific Bell Telephone Company (DBA AT&T California) for Underground Communications Facilities in Connection with the Opt-E-Man Upgrades at Villa Park High School 27-31
- G. Request for Allowance of Attendance Because of Emergency Conditions 32-40

HUMAN RESOURCES

- H. Personnel Report 41-59
- I. Student Teacher Assignments/Agreements 60-61
- J. STRS Post-Retirement Request for Retired Administrator 62

EDUCATIONAL SERVICES

- K. Contract Services Report- Educational Services 63-64
- L. Study Trips 65-66
- M. Orange Unified School District Home School Program 67

| | | |
|---|--|-------|
| N. | Resolution No. 19-07-08 - Allocation of the Arts and Music Block Grant Award | 68-69 |
| O. | Approval of E-Rate Telecommunications Contracts - Funding Year 11: July 1, 2008 - June 30, 2009 | 70 |
| P. | Approval of the Calnet 2 Contract for Telecommunication Services for E-Rate Funding Year 11: July 1, 2008 - June 30, 2009 | 71 |
| Q. | Consolidated Application Part II 2007-08 | 72-74 |
| R. | Second Quarter Report of Uniform Complaints for the Williams Case Settlement | 75 |
| S. | Textbook Adoptions - Final | 76-77 |
| T. | Expulsion of Student: Case No. 07-08-11 | 78 |
| U. | Expulsion of Student: Case No. 07-08-15 | 79 |
| V. | Expulsion of Student: Case No. 07-08-16 | 80 |
| W. | Expulsion of Student: Case No. 07-08-18 | 81 |
| X. | Expulsion of Student: Case No. 07-08-20 | 82 |
| <u>PUPIL SERVICES</u> | | |
| Y. | Contract Services Report - Pupil Services | 83 |
| Z. | Special Education Non-Public Schools & Designated Instructional Services - 2007-08 | 84-85 |
| <u>BOARD OF EDUCATION/SUPERINTENDENT</u> | | |
| AA. | Resolution No. 21-07-08: Authorization of Payment to Trustee Absent from Regular Board Meeting | 86-87 |

15. PUBLIC COMMENT: Non-Agenda Items

Members of the audience may address the Board of Education on items not on the agenda that are within the Board's subject matter jurisdiction. Speaking time is limited to three (3) minutes per speaker with a maximum of twenty (20) minutes per topic. Persons wishing to address the Board should complete and submit a blue Public Comment card, available on the information table, prior to the meeting. Matters not on the agenda may neither be acted on nor discussed by the Board, but will be researched and responded to in any one of the following ways: 1) by telephone after research; 2) by mail after research; or 3) at a subsequent Board meeting as an agenda item.

16. OTHER BUSINESS (Board/Staff Conference and Comments)

17. ADJOURNMENT

18. CALENDAR OF 2008 BOARD MEETINGS

| | |
|-------------------|--------------------|
| January 17, 2008 | June 19, 2008 |
| February 7, 2008 | July 24, 2008 |
| February 21, 2008 | August 21, 2008 |
| March 6, 2008 | September 11, 2008 |
| March 20, 2008 | September 25, 2008 |
| April 17, 2008 | October 16, 2008 |
| May 8, 2008 | October 30, 2008 |
| May 22, 2008 | November 13, 2008 |
| June 5, 2008 | December 11, 2008 |

ANNOUNCEMENTS
AND
ACKNOWLEDGMENTS

TOPIC:

ANNOUNCEMENTS & ACKNOWLEDGMENTS

DESCRIPTION:

9.A. Superintendent's Report

9.B. Board President's Report

9.C. Board Member Recognition of Students, Staff and Community

- *Outstanding Customer Service Incentive Program (attached)*

TOPIC: **BOARD RECOGNITION – OUTSTANDING CUSTOMER SERVICE INCENTIVE PROGRAM – “ATTITUDE IS EVERYTHING”**

DESCRIPTION: In keeping with the District’s Top Ten Core Values of providing outstanding customer service, the new incentive program entitled, “Attitude is Everything,” has been implemented. Outstanding customer service has been identified as a “Wildly Important Goal” or a WIG.

Classified employees, who have been nominated by their peers, co-workers and/or supervisors, will be selected monthly based on their positive “can do” attitude as reflected in their daily activities. Qualifications for recognition include the following:

- Positive “can do” attitude/optimistic *persona*
- Brings a solution when presenting a challenge
- Consistently goes the extra mile
- Exhibits positive phone etiquette (introduces themselves, hear a smile in their voice, offers solutions)
- Is a team player

For the month of January, the classified employees chosen for exemplifying outstanding customer service are:

- **Rose Kinner**, Senior Secretary
Health Services
- **Cecilia Sepulveda**, Office Manager
Canyon Rim Elementary School

Recommendation: It is recommended that the Board of Education recognize **Rose Kinner** and **Cecilia Sepulveda** as recipients of the Outstanding Customer Service Award for the month of January.

| | |
|-----------------|--|
| TOPIC: | BOARD PROCLAMATION: "MAKE KINDNESS CONTAGIOUS MONTH" – FEBRUARY |
| DESCRIPTION: | <p>The Natasha Sarah Jaievsky Foundation celebrates the "Make Kindness Contagious Month" in February. During February, schools are encouraged to reinforce kindness through recognizing kindness in students, the use of kindness-related books, and general discussion of the topic.</p> <p>Orange Unified School District is pleased to participate in this observance and welcomes the opportunity to officially recognize the month of February as "Make Kindness Contagious Month."</p> |
| FISCAL IMPACT: | This item has no fiscal impact. |
| RECOMMENDATION: | It is recommended that the Board of Education officially proclaim February 2008 as "Make Kindness Contagious Month" in the Orange Unified School District. It is further recommended that the Board encourage students, parents, and staff to spread kindness, practice patience, emphasize respect, and promote generosity. |

**ORANGE UNIFIED SCHOOL DISTRICT
Board of Education**

PROCLAMATION

“Make Kindness Contagious Month”

February 2008

WHEREAS, Natasha Sarah Jaievsky was a precious and amazing young girl who dearly loved everything about life, particularly her family, friends, and teachers, and touched their lives with her beautiful smile, kind heart, and extraordinary kindness; and

WHEREAS, the Natasha Jaievsky Legacy Foundation was established in 2002 after Natasha’s untimely passing at the age of 6, and is dedicated to her loving memory; and

WHEREAS, the Natasha Sarah Jaievsky Legacy Foundation honors her memory by promoting “Make Kindness Contagious Month” to motivate people of all ages to perform and recognize acts of kindness and expressions of empathy and compassion for one another; and

NOW, the Board of Education proclaims the month of February 2008 as “Make Kindness Contagious Month” in the Orange Unified School District and encourages students and staff to spread kindness, practice patience, emphasize respect, promote generosity, and celebrate Natasha’s life and legacy.

Dated this 17th day of January, 2008.

Wes Poutsma, Board President

Kimberlee Nichols, Clerk of the Board

ACTION ITEMS

TOPIC: APPROVAL TO EXTEND THE TERM OF EMPLOYMENT FOR ASSISTANT SUPERINTENDENTS

DESCRIPTION: The Board of Education will consider extending the term of employment to June 30, 2010, for the Assistant Superintendent of Business Services (Jon Archibald) and the Assistant Superintendent of Human Resources (Ed Kisse). *Note:* The Assistant Superintendent for Educational Services' position is filled by an interim employee and is therefore not included in this action.

FISCAL IMPACT: As per the terms and conditions of the contract.

RECOMMENDATION: It is recommended the Board of Education approve extending the term of the employment to June 30, 2010, for the Assistant Superintendent, Business Services, and the Assistant Superintendent, Human Resources.

| | |
|-----------------|---|
| TOPIC: | TENTATIVE AGREEMENT BETWEEN ORANGE UNIFIED SCHOOL DISTRICT AND ORANGE UNIFIED EDUCATION ASSOCIATION, FOR 2007-08 RE-OPENER NEGOTIATIONS AND ATTACHED AB 1200 INFORMATION |
| DESCRIPTION: | This item pertains to the attached Tentative Agreement between the Orange Unified School District and the Orange Unified Education Association for the 2007-08 re-opener negotiations. Under the terms of the Collective Bargaining Agreement, the parties agreed to re-open Article 2, pertaining to compensation for negotiations for 2007-08. The Tentative Agreement provides for a salary increase of 3.75% effective July 1, 2007. This Tentative Agreement concludes re-opener negotiations between the Orange Unified School District and the Orange Unified Education Association for 2007-08. |
| FISCAL IMPACT: | See attached AB 1200 analysis. |
| RECOMMENDATION: | It is recommended that the Board of Education ratify the Tentative Agreement between the Orange Unified School District and the Orange Unified Education Association. |

**Tentative Agreement
Between
Orange Unified School District (OUSD)
And
Orange Unified Education Association (OUEA)**

It is mutually agreed between the parties as follows:

The District shall provide a salary increase of 3.75% effective July 1, 2007.

Effective July 1, 2007, the top step of the teacher/nurse, counselor, media specialist, psychologist, and speech language therapist salary schedules shall be adjusted from step 30 to step 28.

Also, effective July 1, 2007, the following contract language shall be amended:

9.200 Staffing of these pupil personnel services shall be as follows during the term of this contract:

a. Counselors

Throughout the term of this contract, middle schools with less than 850 student enrollment will be staffed with at least one (1) counselor. Middle schools with more than 850 students will be staffed at a minimum of 1.5 counselors.

Comprehensive high schools will be staffed with a minimum of four (4) counselors. Additional counselors will be added based on a minimum student/counselor ratio of 450:1. The continuation high school and Special Programs (Independent Study, Teen Mom and Opportunity Program) will each be staffed with a minimum of one (1) counselor.

When the ratio is exceeded by 225, a half counselor position will be added.

~~19.600 R.O.P. will be staffed with a minimum of one (1) counselor.~~

Effective July 1, 2008, modify the work year for psychologists and library media specialists to 195 days.

In addition,

1. The parties will convene a 6 member committee (three plus three) to study and recommend a memorandum of understanding pertaining to Article 6.1150 regarding instructional minutes for grades 9-12 as needed to meet State requirements.

2. This tentative agreement is subject to ratification by both parties and subject to "AB 1200" review and approval by the Orange County Department of Education.
3. All the members of the bargaining teams for both OUSD and OUEA support and recommend the ratification of this tentative agreement.
4. This tentative agreement concludes all negotiations between the parties for 2007-08.

Sam E. Green 12/11/07
For the District Date

J. A. B. Brown 12.11.07
For OUEA Date

[Signature] 12-11-07
For the District Date

[Signature] 12/11/07
For OUEA Date

[Signature] 12/11/07
For the District Date

[Signature] 12/11/07
For OUEA Date

David A. Brown 12/11/07
For OUEA Date

TOPIC: SALARY SCHEDULE ADJUSTMENT FOR LEADERSHIP EMPLOYEES, AND ATTACHED AB 1200 INFORMATION

DESCRIPTION: The Superintendent has met and conferred with representatives from the leadership group for a second time on the topic of compensation for leadership employees. The Superintendent recommends for the 2007-08 school year that the Board of Education approve an additional 0.25% increase to the leadership salary schedule. In order to pay for the additional 0.25% increase, adjustments to salary and work year for selected leadership positions have been made. This additional adjustment would bring the total increase for 2007-08 to 3.75%, to be effective July 1, 2007.

FISCAL IMPACT: No additional fiscal impact. (See attached AB 1200 analysis.)

RECOMMENDATION: It is recommended that the Board of Education approve an additional 0.25% salary schedule adjustment for leadership employees effective July 1, 2007.

Orange Unified School District
And
Orange Unified Education Association
And Leadership Employees
Collective Bargaining Agreement
For 2007-08 School Year
AB 1200 Information
January 17, 2008

2007-08

| | | |
|---------------------------------------|--------------------|------|
| Estimated Revenue | \$241,894,669 | |
| Estimated Expenditures | <u>256,805,510</u> | |
| Excess (Deficiency) | \$(14,910,841) | |
| Estimated Ending Balance | \$9,630,146 | |
| Other Designation | (731,127) | |
| Designated for Economic Uncertainties | <u>(7,704,165)</u> | 3.0% |
| Unappropriated Amount | 1,194,853 | |

2008-09

Assumptions:

- 4.30% COLA
- Ongoing OUEA/Leadership Costs
- No Additional Increase in H&W Benefits Paid

| | | |
|---------------------------------------|--------------------|------|
| Estimated Revenue | \$244,760,194 | |
| Estimated Expenditures | <u>245,522,798</u> | |
| Excess (Deficiency) | \$ (762,604) | |
| Estimated Ending Balance | \$8,867,542 | |
| Other Designations | (731,127) | |
| Designated for Economic Uncertainties | <u>(7,365,684)</u> | 3.0% |
| Unappropriated Amount | 770,731 | |

2009-10

Assumptions:

- 2.50% COLA
- Ongoing OUEA/Leadership Costs
- No Additional Increase in H&W Benefits Paid

| | | |
|---------------------------------------|--------------------|------|
| Estimated Revenue | \$247,786,746 | |
| Estimated Expenditures | <u>248,301,544</u> | |
| Excess (Deficiency) | \$ (514,798) | |
| Estimated Ending Balance | \$8,352,744 | |
| Other Designations | (731,127) | |
| Designated for Economic Uncertainties | <u>(7,449,046)</u> | 3.0% |
| Unappropriated Amount | 172,570 | |

TOPIC:

BOARD AUTHORITY TO ESTABLISH COMMITTEES

DESCRIPTION:

At the December 13, 2007 meeting, the Board directed the Superintendent to review various committees and make recommendations relative to their classification according to the appropriate bylaw or policy. The committees included:

- Legislative Coalition
- City/Schools Coordinating Committee
- City of Villa Park/Schools Committee
- Education Task Force
(Orange Chamber of Commerce)
- Governance Committee
- Representative to Anaheim Hills Functions
- Representative to City of Orange Functions
- Representative to Villa Park City Functions

The subject of the Board's authority to establish various committees is addressed in Board Bylaw 9130 and related policies. Board Bylaw 9130 is a broad, general bylaw and provides that "The Board of Education may establish Board committees as necessary. The Board shall determine the duties of the committee at the time of its appointment. Unless specifically authorized by the Board to act on its behalf, Board committees shall act in an advisory capacity. When its duties have been completed, the committee shall be dissolved."

Board Bylaw 9140 pertains to "Board Representatives" and provides that "The Board may appoint any of its members to serve on advisory committees or as representative to other public agencies or organizations when the Board deems such appointments desirable, contingent on acceptance of the appointment by the member."

Board Policy 1220 pertains to "Citizen Advisory Committees" and provides that "The Board may establish citizen advisory committees to consider school problems and issues as the need arises, or when required by law. Such committees shall serve in a strictly advisory capacity; they may make recommendations regarding Board policy, but their actions shall not be binding on the Board. The Board may dissolve any advisory committees not required by law at any time." In addition, the Superintendent may establish advisory committees.

Based upon BB 9130, BB 9140 and BP 1220, the various committees and Board representatives fall under the following classifications:

| Item | Classification |
|---|----------------------------|
| Legislative Coalition | Citizen Advisory Committee |
| City/Schools Coordinating Committee | Board Representatives |
| City of Villa Park/Schools Committee | Board Representatives |
| Education Task Force (Orange Chamber of Commerce) | Board Representative |
| Governance Committee (to be determined as necessary) | Board Sub-Committee |
| Representative to Anaheim Hills Civic Functions | Board Representatives |
| Representative to City of Orange Civic Functions | Board Representatives |
| Representative to Villa Park City Civic Functions | Board Representatives |

FISCAL IMPACT:

This item has minimal fiscal impact limited to operational costs. No additional staff expenses are incurred.

RECOMMENDATION:

It is recommended that the Board of Education review the list of the various committees and assign Board members as appropriate or dissolve any committees that are no longer operational.

INFORMATION/DISCUSSION ITEMS

| | |
|-----------------|---|
| TOPIC: | ANNUAL AUDIT REPORT FOR FISCAL YEAR 2006-2007 |
| DESCRIPTION: | <p>Christy White, a partner in the firm of Nigro, Nigro & White, will present information from the 2006-07 audit report. The independent audit is designed to encourage sound fiscal practices, to promote efficient and effective use of public funds, and to determine the integrity of the financial accounting and reporting systems.</p> <p>The Education Code requires that the independent audit be submitted to the State Controller's Office, federal agencies, and the Orange County Department of Education. The State Controller's Office reviews each independent audit and approves or disapproves the audit report within three to four months of receipt. The independent audit report for 2006-07 was filed with the state by December 15, 2007, as required.</p> <p>The general objectives of an audit are to determine whether: (1) the District's financial statements are presented fairly in accordance with generally accepted accounting principles; (2) there is effective district control over and proper accounting for revenues, expenditures, assets, and liabilities; (3) state and federal reports and claims for advances or reimbursements contain accurate and reliable financial data and are presented in accordance with the terms of applicable agreements; and (4) state and federal funds are being expended in accordance with the terms of applicable agreements and those provisions of law or regulations that could have a material effect on the financial statements or on the awards tested.</p> <p>The independent audit of the 2006-07 fiscal records for Orange Unified School District indicates a positive financial status and ongoing maintenance and improvement of appropriate internal controls. The ending balances for all funds have been verified to be those previously stated in the District's SACS Financial Reporting documents on file with the State of California Department of Education and those indicated in the independent accounting system of the Orange County Department of Education, which maintains ledgers on all payroll, warrant, and financial transactions of any sort of each school district located within Orange County.</p> |
| FISCAL IMPACT: | This item has no fiscal impact. |
| RECOMMENDATION: | The independent audit report is presented for information only and does not require Board action. |

| | |
|-----------------|---|
| TOPIC: | SECOND QUARTER STATUS REPORT FOR 2007-08, YEAR TWO, OF THE THREE-YEAR STRATEGIC PLAN |
| DESCRIPTION: | The first quarter status report of the three-year strategic plan was presented on October 11, 2007. Tonight, the second quarter status report for the period October through December 31 st will be presented. |
| FISCAL IMPACT: | This item has no fiscal impact. |
| RECOMMENDATION: | The second quarter status report for 2007-08 is presented for information only. No action is required. |

2nd Quarter Strategic Plan Status Report for 2007-08, Year Two
As of December 31, 2007

| TECHNOLOGY EXPANSION | | | |
|----------------------|---|---|---|
| | STRATEGY | 07 OCT – DEC (sub-activities) | PROGRESS |
| #1 | Work with Facilities & Planning to include cabling, network hardware and classroom equipment in the Modernization Plan and the development of any future bond campaign. | | The OUSD Tech Plan for 2008-2011 has been submitted to the California Department of Education to meet requirements for future grant and ERATE funding. The OUSD Tech Plan for 2008-2011 is available online upon request. |
| #2 | Seek outside funding sources (i.e. ERATE, EETT grants, business partnerships, other grants, and new legislation.) | Consider hiring a district grant writer to research and write grants (2007-08). Collaborate with OCDE to develop wording for proposed legislation (new money and money matching) by October 2007. Work with author and OCDE lobbyist to sponsor bill (Dec. 2007). | OUSD received approval for an EETT Formula grant for 2008-2009 in the amount of \$39,000. This grant is for staff development and innovative uses of technology. Some schools have received equipment and software from the Microsoft (MS) settlement funds. OUSD representatives, LAUSD representatives, CA Computer Using Educators (CUE), and North American Council for Online Learning (NACOL) met and formed the first state chapter of NACOL with CUE. The chapter is called eSIG (eLearning SIG). The chapter was formed to unite school districts in the discussion of policy, technical, content and other issues pertaining to the deployment of online learning services to K-12 students in California. OUSD representatives are working with School Innovations and Advocacy, Inc. as they provide advocacy and consulting services to seek enactment of legislation in 2008 to allow school districts, specifically OUSD, to more effectively provide instruction using online education. The first planning meeting was in December. |
| #3 | Develop recommendation to allocate technology funds per student for sites (e.g. \$10 per student) on an ongoing basis, recognizing that an approved site technology plan and a site technology position will be needed. | Schools form technology committees charged with directing expenditures and implementing plan (Dec. 2007). | New technology standards for schools and a status report on technology at schools are included in the revised OUSD Tech Plan for 2008-2011. Schools will use the standards in planning technology expenditures. Schools are currently using site funds, lottery, block grant, grants, and categorical funds to purchase technology. Funds from the MS settlement are also being used to purchase technology for the identified 19 MS schools. |
| #4 | Work with Cabinet and site administration to fulfill commitment in getting all teachers to regularly use and update Aeries and Blackboard and expand the Online Course/Orange LIVE to include options for all core classes. | | <p>The Elementary Aeries Online Gradebook Support Team has representatives from each elementary school and meets monthly. The goal is to build on site support for teachers on Aeries Online Gradebook as well as to provide a voice for teachers to make sure concerns and issues are addressed. The Secondary Aeries Online Gradebook Support Team continues to meet monthly with growing success. The secondary team is also doing Blackboard trainings on site.</p> <p>Blackboard Trainings continue upon site requests. Blackboard is being used for PLCs (Professional Learning Communities) at sites and at the District. The Elementary Curriculum PLC is up and running on Blackboard. The Counseling Handbook is posted on Blackboard and CASHEE AB1802 forms are posted on the Blackboard site. Two schools are set to pilot new logins for parents on Blackboard which will make it easier for parents to use Blackboard and the Parent Portal.</p> <p>Online Courses/Orange LIVE will add 4 new courses in September 2008. Currently there are 15 courses and 21 sections of online courses offered this school year (07-08).</p> |
| #5 | Work toward providing comprehensive technology trainings for teachers, parents, and students that will be funded from Teacher Quality Funds, categorical funds, grant funds, site funds, CBET, and ROP programs. | | Introduction to Elementary Aeries Online Gradebook trainings have been offered at many elementary schools. Blackboard site trainings continue to be offered upon site requests. Some secondary schools have had trainings in Blackboard for use by their PLCs. |

2nd Quarter Strategic Plan Status Report for 2007-08, Year Two
As of December 31, 2007

| PERSONALIZATION | | | |
|-----------------|--|-------------------------------|--|
| | STRATEGY | 07 OCT – DEC (sub-activities) | PROGRESS |
| #1 | Work with parents, students and staff to develop and implement a personalized education plan for each student to ensure academic achievement for every learner, as measured by the NCLB Act of 2001, the State STAR testing program and the California High School Exit Exam (CAHSEE). | | Implementation of BRAINX for CAHSEE prep in grades 11 and 12, including Special Education. |
| #2 | Create programs, structures and schedules that increase the connection between individual students and adults, and that develop community within the school that values and supports academic and social growth for every learner | | Parent contacts on Aeries have been reviewed and edited, so that current information is listed when needed in emergency situations. Supplemental Education Services (SES) tutoring program began for students at program improvement schools. |
| #3 | Identify best practices in differentiated instruction to match student interest, abilities and learning styles. | | Implementation of PLATO program for credit recovery for all secondary students. Completed CELDT (California English Language Development Testing) testing. The elementary report card was revised and used during 1 st quarter parent conferences. The report card was ready for the student grade report mailed home to parents for the 2 nd quarter. Internal and External walkthroughs were conducted for elementary schools. |
| #4 | Develop curriculum to ensure a broad, relevant education to support the personalized education plans. | November 07 – Board Approval | Teachers are developing lessons to differentiate instruction via interactive boards. The District Site Liaison Team meets quarterly with high priority schools for improvement of academic achievement. Game Day in the Schools is a full time PE program for Kindergarten through 6 th grade. |
| #5 | Train/prepare staff and parents for their role in personalized education. | | Positive Behavioral Intervention Systems (PBIS) character education is being implemented in 13 elementary schools. The Institute for Character Education (ICE) is being implemented in 3 middle schools. |
| #6 | Work with principals and the human resources division to ensure individuals hired and assigned to new positions embody the district's core values and embrace personalization as a vehicle to ensure personalized academic growth for every learner. | | BTSA (Beginning Teacher Support and Assessment) Program) and PAR (Peer Assistance & Review) programs provide mentoring and support for newly hired teachers. The District's Core Values are introduced in the Slice of Orange orientation for new teachers, with a strong emphasis on personalization. Human Resources developed standardized procedures in which Mentor Teachers, Peer Coaches and support providers are assigned. Training in Coaching and Mentoring is provided for staff serving as support providers. |

2nd Quarter Strategic Plan Status Report for 2007-08, Year Two
As of December 31, 2007

| PARTNERSHIPS | | | |
|--------------|--------------------------------------|---|--|
| | STRATEGY | 07 OCT – DEC (sub-activities) | PROGRESS |
| #1 | Public Relations Campaign | | A survey instrument to measure community involvement has been completed and will be administered to community members during the month of January. |
| #2 | Revamp District's Use of Foundations | Align resources of Education Partnership Summit to needs of district (September – October 2007) | There were no immediate resources received as a result of the Business Breakfast. It was not an appropriate venue for making requests. |
| #3 | Director of Community Development | Donor recognition program (October 1, 2007). | District donors are recognized through personal letters, acknowledgements on our education access channel, and through flyers posted at schools. |
| #4 | Stakeholder Committee | | The groundwork has begun for a stakeholder committee. The committee will be in place by the first part of February, and will hold meetings monthly or as needed. |

2nd Quarter Strategic Plan Status Report for 2007-08, Year Two
As of December 31, 2007

| FACILITIES | | | |
|------------|--|--|---|
| | STRATEGY | 07 OCT – DEC (sub-activities) | PROGRESS |
| #1 | Promote passing of a facility bond. | | Modernization projects continue at Portola Middle School and Esplanade and Jordan Elementary Schools. These projects will be completed during 2008. Local facility funds and state facility bond funds are being used to complete these projects. Sycamore Elementary School modernization plans are at DSA for approval. |
| #2 | Promote community partnership to adopt schools. | Oct. 2007 Begin Education of community regarding needs. | Needs assessments have been made for most schools. The process will continue this Spring |
| #3 | Apply to non-traditional sources for facility funding. | Dec. 2007 Application approved by Office of Public School Construction. | Energy conservation projects previously approved for Crescent Primary, Imperial Elementary, Cerro Villa Middle, Santiago Charter Middle, Orange High, El Modena High, Canyon High and Villa Park High Schools are in various states of planning and approval to be implemented during the next two years. Work at Santiago Charter Middle School began during December 2007. Funding will come from state facilities bond and energy savings. |
| #4 | Evaluation & Disposal of surplus property. | Dec. 2007 Sale/Disposal/Exchange completed. | Properties to be considered for surplus property disposition have been identified and will be reviewed by a District Advisory Committee (7/11 Committee) as specified in Education Code section 17388. A recommendation to form the Advisory Committee will be presented to the Board of Education at the February 7, 2008 meeting. Once the Advisory Committee is formed it will have the responsibility of making a recommendation to the Board regarding each identified property. |
| #5 | Encourage student population & clubs. | Oct. 2007 Bi-Annual work days for campus beautification. | Many schools currently have campus clean up days. Parent groups have also volunteered to put up back-pack hooks, paint tables and do general beautification on our campuses. Community Development is working on a program for this Spring to encourage campus beautification. |

CONSENT ITEMS

ROUTINE ITEMS ACTED UPON IN ONE MOTION UNLESS PULLED FOR DISCUSSION AND SEPARATE ACTION.

TOPIC: PURCHASE ORDERS LIST

DESCRIPTION: Purchase orders have been processed in accordance with the rules and regulations of the Board of Education and applicable legal requirements of the State of California.

District procedures and computer system controls require that an approved purchase order, pay voucher, current liability, or credit memo exist on the District's computer system prior to the issuance of warrants. There may be a multiple number of warrants drawn against a given purchase order up to the maximum amount for that purchase order. The system restricts the processing of payment amounts in excess of the issued purchase order.

It should be noted that the purchase order system allows for a one-line description of the services or items to be procured. The issued purchase order forms a contract between the District and the vendor.

FISCAL IMPACT: \$3,431,997.70

RECOMMENDATION: It is recommended that the Board of Education approve the Purchase Orders List dated November 29 through December 20, 2007 in the amount of \$3,431,997.70.

TOPIC: **WARRANTS LIST**

DESCRIPTION: Warrants have been processed in accordance with the rules and regulations of the Board of Education and applicable legal requirements of the State of California and the Orange County Department of Education.

District procedures and computer system controls require that an approved purchase order, pay voucher, current liability, or credit memo exist on the District's computer system prior to the issuance of warrants. There may be a multiple number of warrants drawn against a given purchase order up to the maximum amount for that purchase order. The processing of the warrant is in compliance with the contractual agreement that has been formed by the issuance of the purchase order.

FISCAL IMPACT: \$7,308,911.31

RECOMMENDATION: It is recommended that the Board of Education approve the Warrants List dated November 29 through December 20, 2007 in the amount of \$7,308,911.31.

| | |
|-----------------|--|
| TOPIC: | GIFTS |
| DESCRIPTION: | <p>The following item and attached list of monies was donated to the Orange Unified School District for use as indicated.</p> <ul style="list-style-type: none">• Full-sized cello (like new) to Cerro Villa MS to be used in the string orchestra, donated by Jennifer Montero• Full-sized violin with case (like new) to Portola MS, donated by Jody Dykes• Playworld standard swing set to Palmyra ES, donated by Palmyra PTA |
| FISCAL IMPACT: | Case donations to the District in the amount of \$73,646.39 |
| RECOMMENDATION: | It is recommended the Board of Education accept the cash donations and that a letter of appreciation be forwarded to each benefactor. |

DONATIONS

December 2007

To: Thomas A. Godley, Ed.D.
Superintendent of Schools

From: Joe Sorrera .
Administrative Director, Fiscal Services

We have received the following donated monies. Please prepare the resolution for the following:

[illegible]

TOPIC: CONTRACT SERVICES REPORT – BUSINESS SERVICES

DESCRIPTION: The following is a report of contract service items for Business Services.

CENTER FOR DEMOGRAPHIC RESEARCH, CSUF At the December 13, 2007, Board of Education meeting, the Board approved the recommended Trustee Area Realignment prepared by The Center for Demographics Research. Additional maps are necessary for submission to the Orange County Department of Education, the Registrar of Voters and County Surveyor and additional services may be required to testify before the County Committee on School District Organization.
 General Fund.....not-to-exceed.....\$7,500
 01.00-0000-0-5850-0000-7100-101-101-000 (Christensen)

DOW DIVERSIFIED, INC. The District awarded Bid No. FC6012 – Plastic Covered and Wood Casework – Portola Middle School to Dow Diversified, Inc., on December 14, 2006. Change Order No. 2 increases the value of the contract and does not add any additional time to the contract. The cost and scope were reviewed and found to be reasonable by the architect, construction manager and staff. This Change Order falls within the allowable maximum of 10% per the Public Contract Code 20118.4(a)(2).
 Special Reserve/Capital Projects.....\$1,272
 40.00-0806-0-6279-9520-8500-383-416-000 (Filbeck)

JOYCE INSPECTIONS The District needs the services of a qualified Division of the State Architect (DSA) inspector to oversee the on-site inspection of work performed for the energy conservation and modernization work at Santiago Charter MS. Joyce Inspections is qualified and can provide the required on-site inspection.
 Special Reserve/Capital Projects...not-to-exceed.....\$7,750
 40.00-0824-0-6200-9504-8500-384-416-000 (Harlin)

K & Z CABINET COMPANY, INC. The District awarded Bid No. FC6009 – Plastic Covered and Wood Casework – Jordan Elementary School to K & Z Cabinet Company, Inc., on December 14, 2006. Change Order No. 1 increases the value of the contract and does not add any additional time to the contract. The cost and scope were reviewed and found to be reasonable by the architect, construction manager and staff. This Change Order falls within the allowable maximum of 10% per the Public Contract Code 20118.4(a)(2).
 Special Reserve/Capital Projects.....\$1,752
 40.00-0805-0-6279-9520-8500-248-416-000 (Filbeck)

**SCHOOL
CONSTRUCTION
COMPLIANCE, LLC**

On November 16, 2006, the Board of Education approved School Construction Compliance (SCC) to provide certified payroll reports for the modernization of Esplanade ES, Jordan ES and Portola MS. The final phase of construction and closeout will require an additional \$60,000 between the three projects.
Special Reserves/Capital Projects.....not-to-exceed.....\$60,000
40.00-080X-0-6255-9520-8500-XXX-416-000 (Christensen)

**TADROS AND YOUSSEF
CONSTRUCTION, INC.,
DBA T & Y
CONSTRUCTION, INC.**

The District awarded Bid No. FC6013 – Modernization – Portola Middle School to Tadros and Youssef Construction, Inc., dba T & Y Construction, Inc., on December 14, 2006. Change Order No. 6 increases the value of the contract and does not add any additional time to the contract. The cost and scope were reviewed and found to be reasonable by the architect, construction manager and staff. This Change Order falls within the allowable maximum of 10% per the Public Contract Code 20118.4(a)(2).
Special Reserve/Capital Projects.....\$21,640
40.00-0806-0-6279-9520-8500-383-416-000 (Filbeck)

**LENTZ MORRISSEY
ARCHITECTURE**

On December 16, 2004, the District retained the services of Program Manager/Construction Manager (PM/CM), 3D/I DMJM, to oversee the modernization of nine of the District's schools, California ES, Esplanade ES, Fairhaven ES, Jordan ES, Lampson ES, Prospect ES, Sycamore ES, Portola MS and Yorba MS. The Prospect ES modernization is complete. Jordan and Esplanade ES and Portola MS are currently in the final stages of modernization. Based on the length of time to prepare plans and specifications, the Yorba MS modernization design should start now so construction can commence during the summer recess of 2009.

Lentz Morrissey Architecture (LMA) was one of the firms selected to be eligible for modernization contract awards at the Board meeting on January 8, 2004. LMA has extensive experience working on school modernization projects and staff who are currently available to expedite design of plans and submission to the Division of the State Architect (DSA), California Department of Education (CDE) and Office of Public School Construction (OPSC). Additionally, LMA prepared the modernization plans for Portola Middle School and some economies will be realized by reusing certain design elements from those plans on this project.
Special Reserve/Capital Projects.....not-to-exceed....\$695,000
(including reimbursables)
40.00-0809-0-6210-9520-8500-386-416-000 (Christensen)

FISCAL IMPACT: \$794,914

RECOMMENDATION: It is recommended that the Board of Education approve the Contract Services Report – Business Services as presented.

TOPIC: **ACCEPTANCE OF COMPLETED CONTRACT(S) AND FILING OF NOTICE(S) OF COMPLETION**

DESCRIPTION: The contract(s) listed below have been completed and require acceptance by the Board of Education prior to filing of appropriate notice(s) of completion:

BID NO. 577 – Unit Price Contract – Install conduit, raceway, cables & power to cameras; install network speakers

| | |
|--------------------------|--|
| Project(s): | Lampson Elementary School |
| Board Approval: | March 29, 2007 |
| Original Purchase Order: | 800904, 802282 |
| Completion Date: | November 28, 2007 |
| Contractor: | Stone Electric, Inc. |
| Original Project Amount: | \$18,579.00 |
| Change Order(s) Amount: | -0- |
| Total Project Amount: | \$18,579.00 |
| Fund(s): | Deferred Maintenance (14) General Fund (01) |

BID NO. 589 – Unit Price Contract – Remove & Replace Asphalt for Playground

| | |
|--------------------------|---|
| Project(s): | Fairhaven Elementary School |
| Board Approval: | August 23, 2007 |
| Original Purchase Order: | 802053, 912053 |
| Completion Date: | November 12, 2007 |
| Contractor: | Terra Pave, Inc. |
| Original Project Amount: | \$218,326.60 |
| Change Order(s) Amount: | \$ 1,153.92 (Additional asphalt area south of playground along walkway of building) |
| Total Project Amount: | \$219,480.52 |
| Fund(s): | Deferred Maintenance (14) |

BID NO. 589 – Unit Price Contract – Remove & Replace Asphalt for Playgrounds

| | |
|--------------------------|---|
| Project(s): | Imperial Elementary School |
| Board Approval: | August 23, 2007 |
| Original Purchase Order: | 802051, 912051 |
| Completion Date: | November 12, 2007 |
| Contractor: | Terra Pave, Inc. |
| Original Project Amount: | \$72,089.60 |
| Change Order(s) Amount: | \$ 1,977.00 (Remove and replace wet subgrade with additional base material) |
| Total Project Amount: | \$74,066.60 |
| Fund(s): | Deferred Maintenance (14) |

BID NO. 591 – Replacement of Fire Alarm System at Fletcher

| | |
|--------------------------|----------------------------|
| Project(s): | Fletcher Elementary School |
| Board Approval: | August 23, 2007 |
| Original Purchase Order: | 802041 |
| Completion Date: | December 11, 2007 |
| Contractor: | Time & Alarm Systems |
| Original Project Amount: | \$155,546.00 |
| Change Order(s) Amount: | -0- |
| Total Project Amount: | \$155,546.00 |
| Fund(s): | Deferred Maintenance (14) |

BID NO. FC 6006 – Plastic Laminate Casework at Esplanade

| | |
|--------------------------|---|
| Project(s): | Esplanade Elementary School- Plastic Laminate Casework |
| Original Board Approval: | December 14, 2006 |
| Original Purchase Order: | 704224 |
| Phase I Completion Date: | December 12, 2007 |
| Contractor: | Stolo Cabinets, Inc. |
| Original Project Amount: | \$350,000 |
| Change Order(s) Amount: | -0- |
| Phase I Project Amount: | \$201,813 |
| Fund(s): | Special Reserves (40) |

The Public Contract Code allows school districts to issue contract change orders for up to ten percent of the original contract value. The District typically funds change orders with monies from the original source. If there were no additional monies available, then the District would fund the change through the balance reserve account. In accordance with Public Contract Code Section 7107, the final payment of the ten percent (10%) retention of the value of the work done under these agreements shall be made 35 days after recording by the District of the Notice(s) of Completion at the County of Orange Recorder's Office.

FISCAL IMPACT: No additional fiscal impact.

RECOMMENDATION: It is recommended that the Board of Education accept the above contract(s) as complete, authorize staff to file appropriate notice(s) of completion and release the retention payment(s) to the contractor(s).

TOPIC: RESOLUTION 20-07-08 OF THE BOARD OF EDUCATION OF THE ORANGE UNIFIED SCHOOL DISTRICT DECLARING ITS INTENTION TO CONVEY A GRANT EASEMENT TO PACIFIC BELL TELEPHONE COMPANY (DBA AT&T CALIFORNIA) FOR UNDERGROUND COMMUNICATIONS FACILITIES IN CONNECTION WITH THE OPT-E-MAN UPGRADES AT VILLA PARK HIGH SCHOOL

DESCRIPTION: Pacific Bell Telephone Company (dba AT&T California) requests an easement to construct, reconstruct and maintain such underground communication facilities as Grantee may from time to time require (Exhibits "A" & "B").

The District is authorized to convey an easement to Pacific Bell Telephone Company (dba AT&T California) under Education Code Section 17556, et. seq. Prior to the conveyance and recording, three steps must be taken per the Code: 1) Board resolution declaring intent to grant the easement; 2) Conduct a public hearing; and 3) Second Board resolution conveying the easement. Upon approval of the resolution presented herein, staff will advertise that the public hearing will be held at the next regularly scheduled Board meeting on February 7, 2008.

FISCAL IMPACT: No fiscal impact

RECOMMENDATION: It is recommended that the Board of Education approve Resolution No. 20-07-08 declaring its intention to convey an easement to the Pacific Bell Telephone Company (dba AT&T California) for underground communications facilities in connection with the OPT-E-MAN upgrades at Villa Park High School.

EXHIBIT "A"

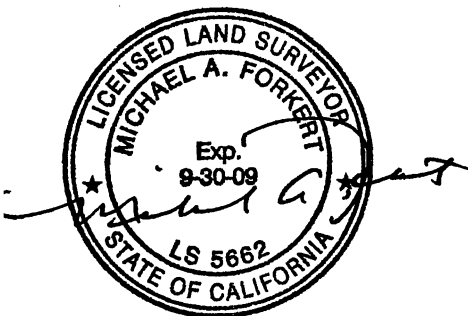
A STRIP OF LAND 6 FEET IN WIDTH LYING WITHIN BLOCK 'H', AS SHOWN ON GRAY TRACT MAP, IN THE CITY OF VILLA PARK, COUNTY OF ORANGE, RECORDED IN BOOK 4, PAGE 548, MISCELLANEOUS RECORDS OF LOS ANGELES COUNTY, STATE OF CALIFORNIA, THE CENTERLINE OF SAID STRIP OF LAND MORE PARTICULARLY DESCRIBED AS FOLLOWS:

BEGINNING AT THE INTERSECTION OF THE CENTERLINE OF PHELAN DRIVE AND THE SOUTHERLY TRACT BOUNDARY LINE OF TRACT No. 5144 AS SHOWN ON SAID TRACT No. 5144, RECORDED IN BOOK 198, PAGES 7 AND 8, INCLUSIVE, RECORDS OF SAID ORANGE COUNTY, SAID STATE OF CALIFORNIA; THENCE SOUTH 88° 28' 57" WEST ALONG SAID SOUTHERLY TRACT BOUNDARY LINE OF SAID TRACT No. 5144, A DISTANCE OF 146.00 FEET TO THE SOUTHWEST TRACT BOUNDARY CORNER OF SAID TRACT No. 5144; THENCE NORTH 01° 28' 07" WEST ALONG THE WESTERLY TRACT BOUNDARY LINE OF SAID TRACT No. 5144, A DISTANCE OF 14.75 FEET TO THE **TRUE POINT OF BEGINNING**, SAID POINT BEING THE BEGINNING OF A CURVE CONCAVE NORTHEASTERLY HAVING A RADIUS OF 12.50 FEET, A RADIAL LINE THROUGH SAID POINT BEARS SOUTH 18° 22' 26" WEST; THENCE NORTHEASTERLY ALONG SAID CENTERLINE OF SAID STRIP AND SAID CURVE ~~THROUGH~~ A CENTRAL ANGLE OF 71° 31' 32", A DISTANCE OF 15.60 FEET; THENCE NORTH 01° 09' 03" WEST, A DISTANCE OF 85.12 FEET THE BEGINNING OF A CURVE CONCAVE SOUTHWESTERLY HAVING A RADIUS OF 12.50 FEET; THENCE NORTHWESTERLY ALONG SAID CURVE THROUGH A CENTRAL ANGLE OF 90° 02' 11", A DISTANCE OF 19.64 FEET; THENCE SOUTH 88° 48' 46" WEST, A DISTANCE OF 215.64 FEET THE BEGINNING OF A CURVE CONCAVE NORTHEASTERLY HAVING A RADIUS OF 50.00 FEET; THENCE NORTHEASTERLY ALONG SAID CURVE THROUGH A CENTRAL ANGLE OF 21° 30' 55", A DISTANCE OF 18.78 FEET TO THE BEGINNING OF A REVERSE CURVE CONCAVE SOUTHWESTERLY HAVING A RADIUS OF 50.00 FEET; THENCE NORTHWESTERLY ALONG SAID CURVE THROUGH A CENTRAL ANGLE OF 22° 58' 48", A DISTANCE OF 20.05 FEET; THENCE SOUTH 87° 20' 53" WEST, A DISTANCE OF 7.07 FEET TO THE END OF SAID STRIP.

THE SIDELINES OF SAID STRIP OF LAND SHALL BE PROLONGED OR SHORTENED SO AS TO TERMINATE ON SAID WESTERLY TRACT BOUNDARY LINE OF SAID TRACT No. 5144.

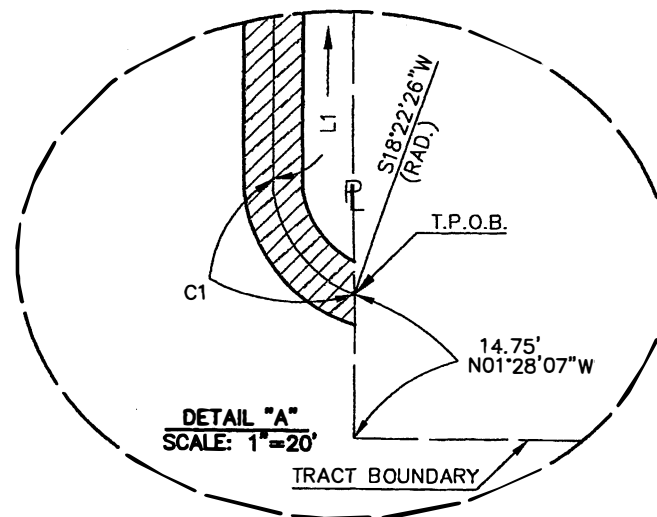
SHOWN ON EXHIBIT "B" ATTACHED HERETO AND MADE A PART HEREOF.

CONTAINING 2,290 SQUARE FEET (0.05 ACRES) MORE OR LESS.



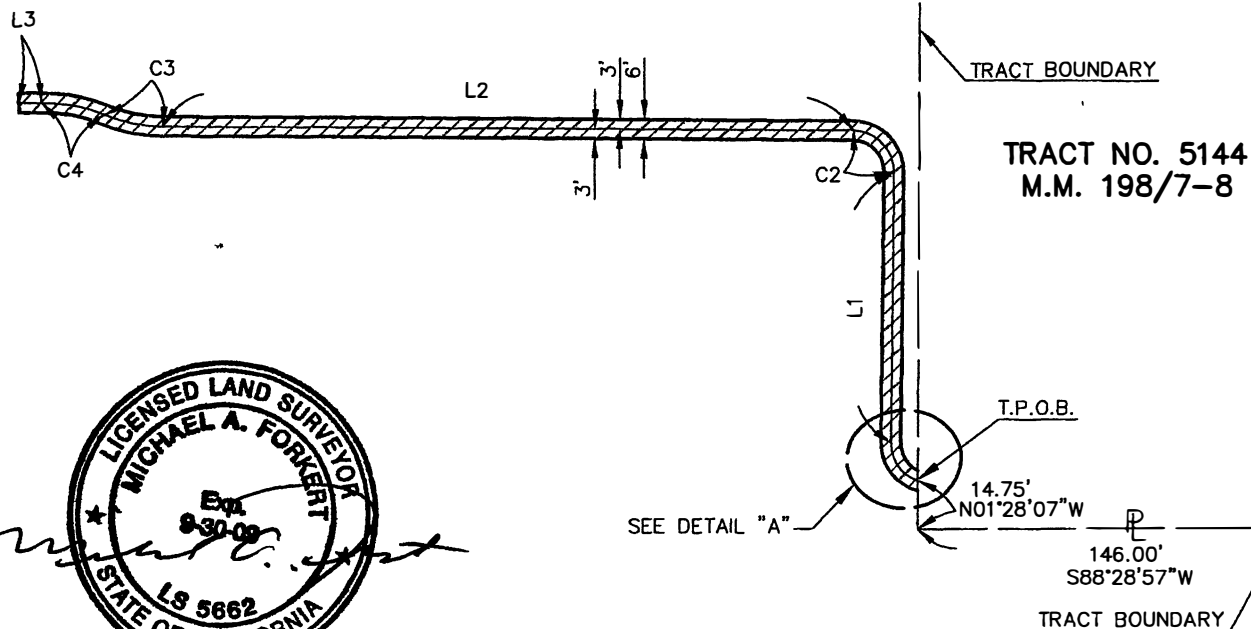
| LINE | DIRECTION | DISTANCE |
|------|-------------|----------|
| L1 | N01°09'03"W | 85.12' |
| L2 | S88°48'46"W | 215.64' |
| L3 | S87°20'53"W | 7.07' |

| CURVE DATA | | | |
|------------|--------|--------|-----------|
| No. | R | L | Δ |
| C1 | 12.50' | 15.60' | 71°31'32" |
| C2 | 12.50' | 19.64' | 90°02'11" |
| C3 | 50.00' | 18.78' | 21°30'55" |
| C4 | 50.00' | 20.05' | 22°58'48" |



VILLA PARK HIGH SCHOOL

BLOCK 'H'
GRAY TRACT
M.R. 4/548 L.A. Co.



WINSOR DR.

PHELAN DR.



LEGEND:



LANDS AS DESCRIBED IN EASEMENT

SCALE: 1" = 60'

SHEET 2 OF 2

at&t California
CB(36) 6334424 L-1
EXHIBIT "B"

GRAY TR, BLK H PAGE 5 OF 5

JN. 5970-1

EXHIBIT "B"

RESOLUTION NO. 20-07-08
of the
BOARD OF EDUCATION of the ORANGE UNIFIED SCHOOL DISTRICT
Declaring its
INTENT TO DEDICATE AN EASEMENT

WHEREAS, the Orange Unified School District (the "District") owns Villa Park High School located at 18042 Taft Ave, in the City of Villa Park, County of Orange, State of California (the "School"); and

WHEREAS, Pacific Bell Telephone Company (dba AT&T California) has requested a Utility Easement for communications facilities over, under, upon, and above the land on the campus of the Villa Park High School, described in Exhibits "A" and "B" attached hereto and incorporated by reference herein, together with all rights of ingress and egress thereto; and

WHEREAS, the District is authorized to convey the Utility Easement to a public or private corporation engaged in the public utility business pursuant to Education Code section 17556 et. seq.

NOW, THEREFORE, the Board of Education of the Orange Unified School District does hereby resolve, determine and order as follows:

1. The Board does hereby announce its intention to convey to Pacific Bell Telephone Company (dba AT&T California), the Easement Deed in the form attached hereto.
2. At the Board meeting to be held on February 7, 2008, at 7:30 p.m. in the District Board Room, located at 1401 North Handy Street, Orange, California, a public hearing will be held upon the question of conveying the proposed Utility Easement.
3. The Superintendent of this District, or his designee, is hereby authorized and directed to give notice of the Board's intent to convey the Easement by posting copies of this resolution signed by the Board, or a majority of it, in three (3) public places in the District no less than ten (10) days before the date of the public meeting, and by publishing the notice once at least five (5) days before the date of the public meeting in a newspaper of general circulation, published in the District.

PASSED AND ADOPTED, by the Board of Education of the Orange Unified School District, Orange County, State of California, on January 17, 2008.

Wes Poutsma, President of the Board
Orange Unified School District

Kimberlee Nichols, Clerk of the Board
Orange Unified School District

NOTICE OF PUBLIC HEARING

NOTICE is hereby given that on January 17, 2008, the Board of Education of the Orange Unified School District, adopted a resolution declaring its intent to grant an easement to Pacific Bell Telephone Company (dba AT&T California) at Villa Park High School, located at 18042 Taft Ave., in the City of Villa Park, County of Orange, State of California, for the purpose of constructing and maintaining communication facilities.

NOTICE is further given that at its meeting to be held on February 7, 2008, at 7:30 p.m. at the District's Board Room, located at 1401 North Handy Street, Orange, California, the Board of Education will conduct a public hearing upon the question of granting the aforementioned easement.

Persons seeking information concerning the proposed easement should contact:

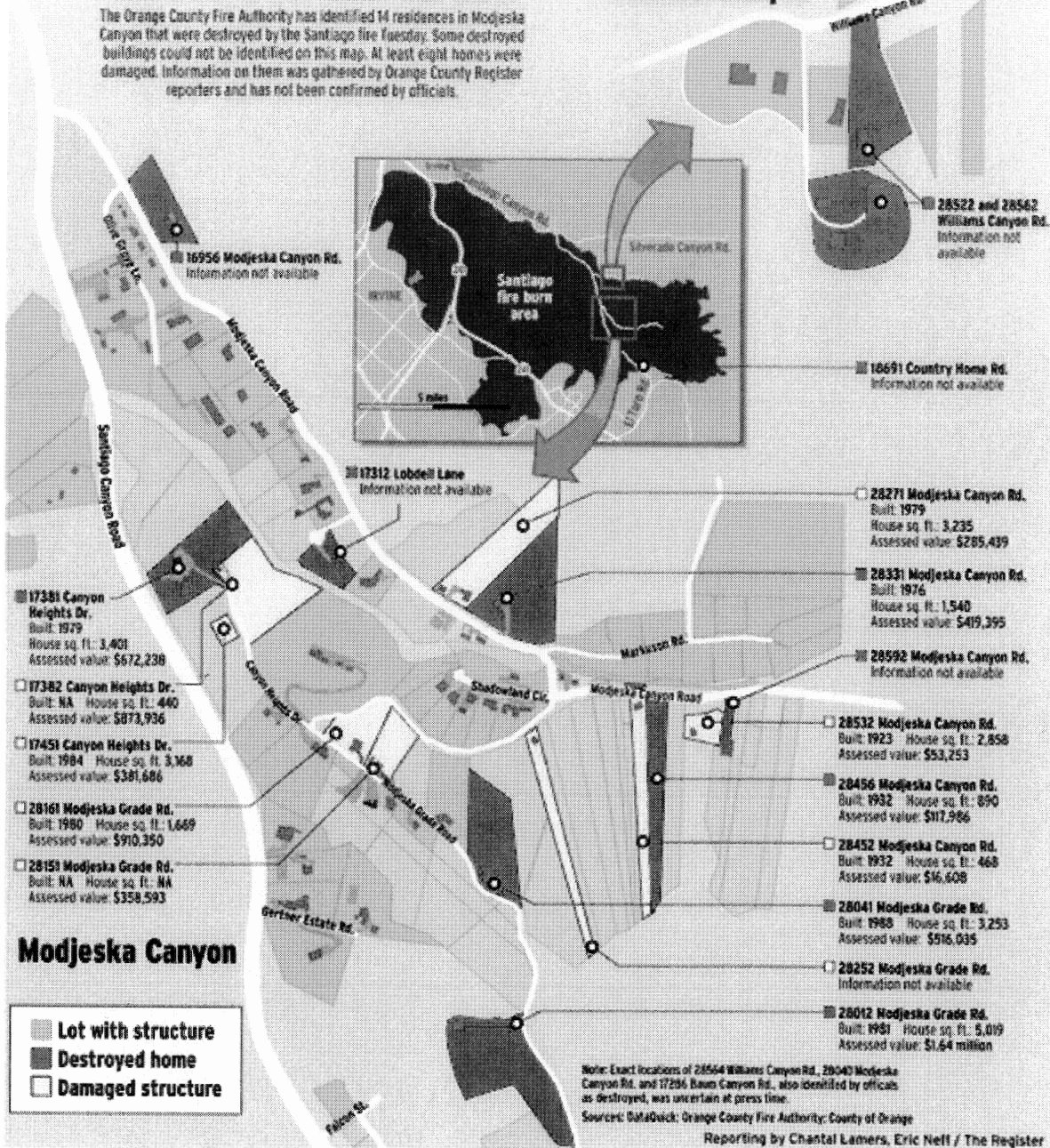
Michael L. Christensen
Senior Executive Director, Administrative Services
Orange Unified School District
P.O. Box 11022
Orange, CA 92865
(714) 628-4500

| | |
|-----------------|---|
| TOPIC: | REQUEST FOR ALLOWANCE OF ATTENDANCE BECAUSE OF EMERGENCY CONDITIONS |
| DESCRIPTION: | <p>The California Department of Education (CDE) has provided Form J-13A, "Request for Allowance of Attendance Because of Emergency Conditions", to enable the District to file an affidavit which will prevent the loss of attendance apportionment revenue as a consequence of the Santiago fire which resulted in the closure of Silverado Elementary School for seven days.</p> <p>This form, if approved by CDE, will enable the District to use a divisor of 173 days for Silverado Elementary School; thereby preserving the daily attendance and the Districtwide longer-day/longer-year incentive funding.</p> <p>It has been determined that all students from the fire area have returned to school. Staff will monitor whether any loss of attendance apportionment might occur during the remainder of the school year resulting from students which might leave the District as a result of the fires.</p> |
| FISCAL IMPACT: | Retention of budgeted apportionment revenue. |
| RECOMMENDATION: | It is recommended that the Board of Education approve and authorize staff to file Form J-13A, "Request for Allowance of Attendance Because of Emergency Conditions," as presented. |

Where the fire struck

The Orange County Fire Authority has identified 14 residences in Modjeska Canyon that were destroyed by the Santiago fire Tuesday. Some destroyed buildings could not be identified on this map. At least eight homes were damaged. Information on them was gathered by Orange County Register reporters and has not been confirmed by officials.

Williams Canyon



**REQUEST FOR ALLOWANCE OF ATTENDANCE
BECAUSE OF EMERGENCY CONDITIONS
Form J-13A (Rev. 01-05)**

School District (or Charter School) Name: **Orange Unified School District**

School District (or Charter School) Address: **1401 N. Handy Street Orange, Ca. 92867**

County-District Code: **30-66621**

County Name: **Orange**

This form replaces the Form J-13A (Rev. 4-90) and should be used to obtain approval of attendance and instructional time credit under one or more of the following conditions:

- When one or more schools were closed because of conditions described in *Education Code* Section 41422
- When one or more schools were kept open but experienced a material decrease in attendance because of conditions described in *Education Code* Section 46392
- When attendance records have been lost or destroyed as described in *Education Code* Section 46391

Approved credit for instructional time may be used in conjunction with regular instructional days to satisfy the requirements of *Education Code* Section 37202 (equal length of instructional time among schools within a district).

A separate form should be submitted for each emergency event, but credit may be requested for more than one school and under one or more of the foregoing conditions on the same form. Each separate form must include the affidavit of the governing board members and the county superintendent before it can be approved by the State Superintendent of Public Instruction.

The original form (with the board members' affidavit) and two copies should be filed with the county superintendent of schools. If the county superintendent approves the request, he or she should execute the affidavit certifying that approval and forward all pages of the original and one copy of the form to:

Terri Emery
School Fiscal Services Division
California Department of Education
1430 N Street, Suite 3800
Sacramento, CA 95814

This form consists of five preprinted pages. Pages 1 and 5 (5C for charter schools) must accompany all submissions. Page 4 (Lost or Destroyed Attendance Records) will not need to be submitted by most districts. Multiple copies of Pages 2 and/or 3 may have to be submitted when claims are made on a school-by-school basis.

SCHOOL CLOSURE

Nature of Emergency (describe): **Irvine (Santiago & Modjeska) Fire**

Name of School(s):
(if request covers all schools, write "all schools")

School Code(s):
Silverado Elementary 30-66621-6029946

We request that apportionments be maintained and instructional time credited for the above named school(s) without regard to the fact that the school(s) were closed on (dates):

**Monday October 22, 2007
Tuesday October 23, 2007
Wednesday October 24, 2007
Thursday October 25, 2007
Friday October 26, 2007
Monday October 29, 2007
Tuesday October 30, 2007**

because of the described emergency. Approval of this request authorizes the local educational agency to disregard these days in the computation of average daily attendance (ADA) (per Section 41422) and obtain credit for instructional time for the days and the instructional minutes that would have been regularly offered on those days pursuant to *Education Code* Section 46200, et seq.

If the school closure resulted from a power outage or impassable roads caused by inclement weather, state the number of school closure days for the same conditions in each of the last five years:

MATERIAL DECREASE

Nature of Emergency (describe):

Name of School:

(if request covers all schools, write "all schools")

School Code(s):

We request the substitution of estimated days of attendance for actual days of attendance in accordance with the provisions of Section 46392. Approval of this request will authorize use of the estimated days of attendance in the computation of apportionments for the foregoing school(s) for (dates) _____ during which school attendance was materially decreased because of the described emergency.

Estimated attendance for each day (October or May ADA): _____ students per day.
Estimated daily attendance multiplied by number of days of material decrease, yields _____ days of attendance requested.

State method of determining estimated daily attendance (October or May ADA):

ADA for school month beginning on _____, 2____ and ending on _____, 2____.

Actual apportionable attendance for days of material decrease:

| Site | Date | Actual Attendance |
|------|------|-------------------|
|------|------|-------------------|

LOST OR DESTROYED ATTENDANCE RECORDS

We request the use of estimated attendance in lieu of attendance that cannot be verified because of the loss or destruction of attendance records. This request is made in accordance with Section 46391. The entire period covered by the lost or destroyed records commences with _____, 2____, up to and including, _____, 2____.

Describe circumstances and extent of records loss or destruction:

Describe how it is proposed to reconstruct attendance records or estimate attendance in the absence of records:

AFFIDAVIT OF GOVERNING BOARD MEMBERS

We, members constituting a majority of the governing board of the Orange Unified school district, hereby swear (or affirm) that the foregoing statements are true and are based on official district records.

| | |
|---------------------------------------|------------|
| <u>Wes Poutsma, President</u> | _____ |
| <u>Melissa Smith, Vice President</u> | _____ |
| <u>Kimberlee Nichols, Board Clerk</u> | _____ |
| <u>Rick Ledesma, Member</u> | _____ |
| <u>Kathryn Moffat, Member</u> | _____ |
| <u>Steve Rocco, Member</u> | _____ |
| <u>John Ortega, Member</u> | _____ |
| Printed Names | Signatures |

At least a majority of the members of the governing board shall execute this affidavit.

Subscribed and sworn (or affirmed) before me, this ____ day of _____, 2____.

Signature, Title _____ **Superintendent,**
Thomas A. Godley, Ed.D.

Orange Unified School District of County, California

Contact/Individual responsible for preparing this form:

Name: Kathleen Franks Title: Attendance Auditing Supervisor

Phone: (714) 628-4160 Fax : (714) 628-4285 E-mail: kfranks@orangeusd.k12.ca.us

.....

AFFIDAVIT OF COUNTY SUPERINTENDENT OF SCHOOLS

The information and statements contained in the foregoing request are true and correct to the best of my knowledge and belief.

Signature, County Superintendent of Schools _____

Date: _____

Subscribed and sworn (or affirmed) before me, this ____ day of _____, 2____.

Signature, Title _____

of _____ County, California

Contact/Individual responsible for preparing this form:

Name: Kathleen Franks Title: Attendance Accounting Supervisor

Phone: (714) 628-4160 Fax : (714) 628-4285 E-mail: kfranks@orangeusd.k12.ca.us

AFFIDAVIT OF CHARTER SCHOOL GOVERNING BOARD MEMBERS

We, members constituting a majority of the governing board of the _____
 _____ charter school, hereby swear (or affirm) that the foregoing
 statements are true and are based on official district records.

| | |
|-------|-------|
| _____ | _____ |
| _____ | _____ |
| _____ | _____ |
| _____ | _____ |
| _____ | _____ |
| _____ | _____ |
| _____ | _____ |
| _____ | _____ |

Printed Names

Signatures

At least a majority of the members of the governing board shall execute this affidavit.

Subscribed and sworn (or affirmed) before me, this ____ day of _____, 2____.

Signature, Title _____

of _____ County, California

Contact/Individual responsible for preparing this form:

Name: _____ Title: _____

Phone: _____ Fax: _____ E-mail: _____

Approval by Superintendent of Authorized Local Educational Agency (LEA)

Signature, Title _____

of _____ (LEA).

AFFIDAVIT OF COUNTY SUPERINTENDENT OF SCHOOLS

The information and statements contained in the foregoing request are true and correct
 to the best of my knowledge and belief.

Signature, County Superintendent of Schools _____

Date: _____

Subscribed and sworn (or affirmed) before me, this ____ day of _____, 2____.

Signature, Title _____

of _____ County, California

Contact/Individual responsible for preparing this form:

Name: _____ Title: _____

Phone: _____ Fax: _____ E-mail: _____

TOPIC: PERSONNEL REPORT

DESCRIPTION: All actions listed in the Personnel Report, representing a cost to the District, have been reviewed by the Business Department and have been assigned a budget number. Appropriate funds exist in all budget areas presented in this Personnel Report. Some items on the report represent the maximum amount that could be encumbered for that item, the actual expenditure may be less, and in no instance will the expenditure be more than the requested amount without an additional request being generated.

This report may require actions for extra pay projects, separation from service, short-term employment, leaves of absence, change of status, and new hires. All requests are generated by individuals, school sites, or various District departments.

All of the above requests have been processed in accordance with the rules and regulations of the Board of Education and the applicable legal requirements of the State of California and the Orange County Department of Education.

FISCAL IMPACT: Certificated: \$406,636

Classified: \$154,640

RECOMMENDATION: It is recommended that the Board of Education approve the Personnel Report as presented.

CLASSIFIED AND CERTIFICATED PERSONNEL REPORT
CERTIFICATED PERSONNEL

| | Name | Position | Administrative Unit | Schedule /Step/ Column | Rate | Eff. From | Date To | Comments |
|---|-------------------------|----------------|-------------------------|------------------------|-----------|-----------|----------|----------------------------------|
| | | | | | | | | |
| | EMPLOYMENT | | | | | | | |
| | | | | | | | | |
| 1 | Deak, Sarah | Teacher | Villa Park HS/Rohlander | | 30,862.00 | 12/4/07 | 6/12/08 | Temp |
| 2 | Fry, Laurie | Teacher | Canyon Hlls/Rohlander | | 42,555.00 | 12/21/07 | 6/12/08 | Temp |
| 3 | O'Brien, Kimberly | Teacher | Orange HS/Rohlander | | 36,905.00 | 12/12/07 | 6/12/08 | Temp |
| | | | | | | | | |
| | LEAVE OF ABSENCE | | | | | | | |
| | | | | | | | | |
| 1 | Matsuoka, Marcie | Teacher | Taft/James | | | | 12/10/07 | Return Unpaid/FMLA/CC/w Benefits |
| 2 | Sinnema, Tracy | Teacher | La Veta/Dahlquist | | | 1/7/08 | 4/9/08 | Unpaid/FMLA/CC/No Benefits |
| | | | | | | | | |
| | SEPARATIONS | | | | | | | |
| | | | | | | | | |
| 1 | Diaz, Flavio | Teacher | ROP/Reider | | | | 5/29/07 | Resignation |
| 2 | Jansen, Cari | Teacher | Esplanade/Anderson | | | | 12/21/07 | Resignation |
| 3 | Porras, Benjamin | Teacher | ROP/Reider | | | | 6/15/07 | Resignation |
| 4 | Rameriz, Rebecca | Teacher | ROP/Reider | | | | 12/15/07 | Resignation |
| 5 | Raya, Louise | Asst Principal | Educ Services/Jones | | | | 12/7/07 | Resignation |
| 6 | Westre, Sharon | Teacher | Human Res/Kissee | | | | 12/21/07 | Retirement |

Staff Responsibility:
Ed Kissee, Assistant Superintendent-Human Resource

CLASSIFIED AND CERTIFICATED PERSONNEL REPORT
CERTIFICATED PERSONNEL

| | Name | Position | Administrative Unit | Schedule /Step/ Column | Rate | Eff. From | Date To | Comments | # of Units | Salary |
|----|-----------------------|----------|---------------------|------------------------|----------|-----------|----------|---------------------------|------------|----------|
| | EXTRA PAY | | | | | | | | | |
| 1 | Abel, Christy | Teacher | Esplanade/Truex | misc hrly rate | 36.10 | 12/1/07 | 5/30/08 | PBIS Staff Development | 8 | 288.80 |
| 2 | Abuhoff, Granger | Teacher | El Modena HS/Oves | misc hrly rate | 36.10 | 12/18/07 | 12/20/07 | Brain-X Training | 1 | 36.10 |
| 3 | Aihara, Kristen | Teacher | Esplanade/Truex | misc hrly rate | 36.10 | 12/1/07 | 5/30/08 | PBIS Staff Development | 8 | 288.80 |
| 4 | Aiken-Pease, Susan | Teacher | IS/Davis | misc hrly rate | 36.10 | 10/1/07 | 6/30/08 | Blackboard | 10 | 361.00 |
| 5 | Alaux, Sandra | Teacher | PAR/McNealy | payment | 1,000.00 | 7/1/07 | 12/31/07 | Service to PAR | 1 | 1,000.00 |
| 6 | Allen-Williams, Regin | Teacher | Esplanade/Truex | misc hrly rate | 36.10 | 12/1/07 | 5/30/08 | PBIS Staff Development | 8 | 288.80 |
| 7 | Alvarez, Allison | Teacher | Esplanade/Truex | misc hrly rate | 36.10 | 12/1/07 | 5/30/08 | PBIS Staff Development | 8 | 288.80 |
| 8 | Andress, Malia | Teacher | Portola/Truex | misc hrly rate | 36.10 | 11/1/07 | 6/12/08 | Homework Club | 64 | 2,310.40 |
| 9 | Armenta, Cynthia | Teacher | Portola/Thompson | noon sup rate | 18.35 | 12/1/07 | 6/12/08 | Noon Supervision | 100 | 1,835.00 |
| 10 | Atwood, Lesley | Teacher | IS/Davis | misc hrly rate | 36.10 | 11/1/07 | 6/30/08 | Aeries Support & Training | 14 | 505.40 |
| 11 | Auxier, Donna | Teacher | Esplanade/Truex | misc hrly rate | 36.10 | 1/14/08 | 5/2/08 | After School Tutoring | 30 | 1,083.00 |
| 12 | Avalos, Alejandra | Teacher | Esplanade/Truex | misc hrly rate | 36.10 | 12/1/07 | 5/30/08 | PBIS Staff Development | 8 | 288.80 |
| 13 | Babayán, Anastasia | Teacher | Sycamore/Ochoa | misc hrly rate | 36.10 | 7/18/07 | 6/13/08 | EL Tutor | 45 | 1,624.50 |
| 14 | Babayán, Anastasia | Teacher | Special Prog/Truex | misc hrly rate | 36.10 | 9/11/07 | 6/30/08 | GLAD Training Follow-up | 15 | 541.50 |
| 15 | Babnick, Steve | Teacher | Cerro Villa/Reider | misc hrly rate | 36.10 | 12/8/07 | 5/24/08 | Saturday School | 64 | 2,310.40 |
| 16 | Ballester-Upton, Ma | Teacher | Taft/Truex | misc hrly rate | 36.10 | 12/3/07 | 12/3/07 | Curriculum Planning | 1.5 | 54.15 |
| 17 | Barney, Helen | Teacher | Yorba/Truex | misc hrly rate | 36.10 | 9/10/07 | 6/11/08 | Math Tutor | 78 | 2,815.80 |
| 18 | Baroldi, Christina | Teacher | Taft/Truex | misc hrly rate | 36.10 | 12/3/07 | 12/3/07 | Curriculum Planning | 1.5 | 54.15 |
| 19 | Barron, John | Teacher | Portola/Truex | misc hrly rate | 36.10 | 11/1/07 | 6/12/08 | Homework Club | 128 | 4,620.80 |
| 20 | Barron, Melinda | Teacher | Orange HS/Oves | misc hrly rate | 36.10 | 12/20/07 | 12/20/07 | Brain-X Training | 1 | 36.10 |
| 21 | Baum, Susan | Teacher | Nutrition/Pollock | payment | 250.00 | 10/1/07 | 1/30/08 | Teacher Liaison Nutrition | 1 | 250.00 |
| 22 | Beard, John | Teacher | Orange HS/Oves | misc hrly rate | 36.10 | 12/20/07 | 12/20/07 | Brain-X Training | 1 | 36.10 |
| 23 | Beaumont, Carol | Teacher | IS/Davis | misc hrly rate | 36.10 | 11/1/07 | 6/30/08 | Aeries Support & Training | 14 | 505.40 |
| 24 | Berry, Colleen | Teacher | Esplanade/Truex | misc hrly rate | 36.10 | 1/14/08 | 5/2/08 | After School Tutoring | 30 | 1,083.00 |
| 25 | Berry, Colleen | Teacher | Nutrition/Pollock | payment | 250.00 | 10/1/07 | 1/30/08 | Teacher Liaison Nutrition | 1 | 250.00 |
| 26 | Bishop, Lindsay | Teacher | Lampson/Truex | misc hrly rate | 36.10 | 12/6/07 | 12/6/07 | Family Literacy | 2 | 72.20 |
| 27 | Bletterman, Christina | Teacher | PAR/McNealy | payment | 750.00 | 7/1/07 | 12/31/07 | Service to PAR | 1 | 750.00 |
| 28 | Bond, Jennfier | Teacher | Taft/Truex | misc hrly rate | 36.10 | 12/3/07 | 12/3/07 | Curriculum Planning | 1.5 | 54.15 |
| 29 | Booth, Julie | Teacher | Special Prog/Ochoa | misc hrly rate | 36.10 | 12/5/07 | 12/5/07 | Making GLAD Supplies | 1 | 36.10 |
| 30 | Borden, Sara | Teacher | Esplanade/Truex | misc hrly rate | 36.10 | 12/1/07 | 5/30/08 | PBIS Staff Development | 8 | 288.80 |
| 31 | Borden, Sara | Teacher | Nutrition/Pollock | payment | 250.00 | 10/1/07 | 1/30/08 | Teacher Liaison Nutrition | 1 | 250.00 |

Staff Responsibility:

Ed Kisse, Assistant Superintendent-Human Resources

CLASSIFIED AND CERTIFICATED PERSONNEL REPORT
CERTIFICATED PERSONNEL

| | Name | Position | Administrative Unit | Schedule /Step/ Column | Rate | Eff. From | Date To | Comments | # of Units | Salary |
|----|---------------------|----------|----------------------|------------------------|----------|-----------|----------|----------------------------|------------|----------|
| 32 | Bowman-Johnson, R | Teacher | IS/Davis | misc hrly rate | 36.10 | 11/1/07 | 6/30/08 | Aeries Support & Training | 14 | 505.40 |
| 33 | Bramel, Gretchen | Teacher | Linda Vista/Stoterau | payment | 150.00 | 1/28/08 | 1/28/08 | Science Workshop Presenter | 1 | 150.00 |
| 34 | Brewer, Rhea | Teacher | Cerro Villa/Reider | misc hrly rate | 36.10 | 12/8/07 | 5/24/08 | Saturday School | 64 | 2,310.40 |
| 35 | Brodhagen, Jennifer | Teacher | IS/Davis | misc hrly rate | 36.10 | 10/1/07 | 6/30/08 | Blackboard | 10 | 361.00 |
| 36 | Brooks, Jennifer | Teacher | IS/Davis | misc hrly rate | 36.10 | 10/1/07 | 6/30/08 | Blackboard | 10 | 361.00 |
| 37 | Brown, Greg | Teacher | IS/Davis | misc hrly rate | 36.10 | 10/1/07 | 6/30/08 | Blackboard | 10 | 361.00 |
| 38 | Brown, Greg | Teacher | Nutrition/Pollock | payment | 250.00 | 10/1/07 | 1/30/08 | Teacher Liaison Nutrition | 1 | 250.00 |
| 39 | Brown, Shannon | Teacher | Nutrition/Pollock | payment | 250.00 | 10/1/07 | 1/30/08 | Teacher Liaison Nutrition | 1 | 250.00 |
| 40 | Bryan, Cathy | Teacher | Yorba/Saraye | misc hrly rate | 36.10 | 9/7/07 | 6/11/08 | EL Tutor | 2 | 72.20 |
| 41 | Buchmiller, Phyllis | Teacher | Esplanade/Truex | misc hrly rate | 36.10 | 12/1/07 | 5/30/08 | PBIS Staff Development | 8 | 288.80 |
| 42 | Buchness, Liisa | Teacher | Cerro Villa/Reider | misc hrly rate | 36.10 | 12/8/07 | 5/24/08 | Saturday School | 64 | 2,310.40 |
| 43 | Buckett, Barbara | Teacher | IS/Davis | misc hrly rate | 36.10 | 10/1/07 | 6/30/08 | Blackboard | 10 | 361.00 |
| 44 | Buckett, Barbara | Teacher | IS/Davis | misc hrly rate | 36.10 | 11/1/07 | 6/30/08 | Aeries Support & Training | 14 | 505.40 |
| 45 | Burd, Orlene | Teacher | IS/Davis | misc hrly rate | 36.10 | 11/1/07 | 6/30/08 | Aeries Support & Training | 14 | 505.40 |
| 46 | Bustamante, Mark | Teacher | Orange HS/Oves | misc hrly rate | 36.10 | 12/20/07 | 12/20/07 | Brain-X Training | 1 | 36.10 |
| 47 | Cahill, John | Teacher | El Modena HS/Oves | misc hrly rate | 36.10 | 12/18/07 | 12/20/07 | Brain-X Training | 1 | 36.10 |
| 48 | Callopy, Chris | Teacher | IS/Davis | misc hrly rate | 36.10 | 11/1/07 | 6/30/08 | Aeries Support & Training | 14 | 505.40 |
| 49 | Campbell, Lea | Teacher | IS/Davis | misc hrly rate | 36.10 | 11/1/07 | 6/30/08 | Aeries Support & Training | 14 | 505.40 |
| 50 | Canto, Misty | Teacher | Special Prog/Ochoa | misc hrly rate | 36.10 | 12/5/07 | 12/5/07 | Making GLAD Supplies | 1 | 36.10 |
| 51 | Cardenas, Jennifer | Teacher | Special Prog/Ochoa | misc hrly rate | 36.10 | 12/5/07 | 12/5/07 | Making GLAD Supplies | 1 | 36.10 |
| 52 | Cardenas, Jennifer | Teacher | Nutrition/Pollock | payment | 250.00 | 10/1/07 | 1/30/08 | Teacher Liaison Nutrition | 1 | 250.00 |
| 53 | Cardenas, Teri | Teacher | IS/Davis | misc hrly rate | 36.10 | 10/1/07 | 6/30/08 | Blackboard | 10 | 361.00 |
| 54 | Cardenas, Teri | Teacher | Nutrition/Pollock | payment | 250.00 | 10/1/07 | 1/30/08 | Teacher Liaison Nutrition | 1 | 250.00 |
| 55 | Cardenas, Teri | Teacher | Taft/Truex | misc hrly rate | 36.10 | 12/3/07 | 12/3/07 | Curriculum Planning | 1.5 | 54.15 |
| 56 | Carey, Doris | Teacher | El Modena HS/Reider | misc hrly rate | 36.10 | 12/1/07 | 1/30/08 | Tutor | 12 | 433.20 |
| 57 | Carey, Doris | Teacher | El Modena HS/Oves | misc hrly rate | 36.10 | 12/18/07 | 12/20/07 | Brain-X Training | 1 | 36.10 |
| 58 | Carey, Kim | Teacher | Jordan/Ochoa | misc hrly rate | 36.10 | 1/14/08 | 5/2/08 | Tutor | 30 | 1,083.00 |
| 59 | Carey, Kim | Teacher | IS/Davis | misc hrly rate | 36.10 | 11/1/07 | 6/30/08 | Aeries Support & Training | 14 | 505.40 |
| 60 | Carrillo, Edward | Teacher | Orange HS/Oves | misc hrly rate | 36.10 | 12/20/07 | 12/20/07 | Brain-X Training | 1 | 36.10 |
| 61 | Chapman, Heather | Teacher | PAR/McNealy | payment | 1,000.00 | 7/1/07 | 12/31/07 | Service to PAR | 1 | 1,000.00 |
| 62 | Cheever, Carri | Teacher | Lampson/Truex | misc hrly rate | 36.10 | 12/6/07 | 12/6/07 | Family Literacy | 2 | 72.20 |
| 63 | Cherkezian, Robin | Teacher | Lampson/Truex | misc hrly rate | 36.10 | 12/6/07 | 12/6/07 | Family Literacy | 2 | 72.20 |
| 64 | Childs, Julie | Teacher | Nutrition/Pollock | payment | 250.00 | 10/1/07 | 1/30/08 | Teacher Liaison Nutrition | 1 | 250.00 |
| 65 | Choi, Ron | Teacher | El Modena HS/Oves | misc hrly rate | 36.10 | 12/18/07 | 12/20/07 | Brain-X Training | 1 | 36.10 |

Staff Responsibility:

Ed Kisse, Assistant Superintendent-Human Resources

CLASSIFIED AND CERTIFICATED PERSONNEL REPORT
CERTIFICATED PERSONNEL

| | Name | Position | Administrative Unit | Schedule /Step/ Column | Rate | Eff. From | Date To | Comments | # of Units | Salary |
|----|-----------------------|----------|---------------------|------------------------|--------|-----------|----------|---------------------------|------------|-----------|
| 66 | Churney, Stephen | Teacher | Yorba/Saraye | misc hrly rate | 36.10 | 9/7/07 | 6/11/08 | EL Tutor | 2 | 72.20 |
| 67 | Churney, Stephen | Teacher | Yorba/Truex | misc hrly rate | 36.10 | 8/27/07 | 6/11/08 | Curriculum Planning | 20 | 722.00 |
| 68 | Clark, Sandra | Teacher | Taft/Truex | misc hrly rate | 36.10 | 12/3/07 | 12/3/07 | Curriculum Planning | 1.5 | 54.15 |
| 69 | Clasen, Jeff | Teacher | IS/Davis | misc hrly rate | 36.10 | 11/1/07 | 6/30/08 | Aeries Support & Training | 14 | 505.40 |
| 70 | Cody, Mary | Teacher | IS/Davis | misc hrly rate | 36.10 | 10/1/07 | 6/30/08 | Blackboard | 10 | 361.00 |
| 71 | Coe, Antoinette | Teacher | Reading First/Truex | misc hrly rate | 36.10 | 1/7/08 | 5/31/08 | Service to Reading First | 32 | 1,155.20 |
| 72 | Cole, Michelle | Teacher | Esplanade/Truex | misc hrly rate | 36.10 | 12/1/07 | 5/30/08 | PBIS Staff Development | 8 | 288.80 |
| 73 | Cole, Cindy | Teacher | IS/Davis | misc hrly rate | 36.10 | 10/1/07 | 6/30/08 | Blackboard | 10 | 361.00 |
| 74 | Connell, Jennifer | Teacher | IS/Davis | misc hrly rate | 36.10 | 10/1/07 | 6/30/08 | Blackboard | 10 | 361.00 |
| 75 | Cooley, Steven | Teacher | Fairhaven/Ochoa | misc hrly rate | 36.10 | 10/23/07 | 6/30/08 | Tutor | 15 | 541.50 |
| 76 | Cory, Thomas | Teacher | SpEd/Rohlander | daily rate | 397.35 | 8/24/07 | 6/16/08 | Speech Support | 70 | 27,814.64 |
| 77 | Cretney, Mike | Teacher | IS/Davis | misc hrly rate | 36.10 | 10/1/07 | 6/30/08 | Blackboard | 10 | 361.00 |
| 78 | Crum, Judy | Teacher | Yorba/Truex | misc hrly rate | 36.10 | 11/6/07 | 6/11/08 | Grade Level Training | 80 | 2,888.00 |
| 79 | Crum, Judy | Teacher | Yorba/Truex | misc hrly rate | 36.10 | 11/6/07 | 6/11/08 | Grade Level Training | 80 | 2,888.00 |
| 80 | Daniel, Dana | Teacher | Yorba/Saraye | misc hrly rate | 36.10 | 9/4/07 | 6/11/08 | Girl's Lockerman Coverage | 40 | 1,444.00 |
| 81 | Davis, Susan | Teacher | Taft/Truex | misc hrly rate | 36.10 | 12/3/07 | 12/3/07 | Curriculum Planning | 1.5 | 54.15 |
| 82 | de Leon, La Tanisha | Teacher | Nutrition/Pollock | payment | 250.00 | 10/1/07 | 1/30/08 | Teacher Liaison Nutrition | 1 | 250.00 |
| 83 | Demont, Remy | Teacher | Orange HS/Oves | misc hrly rate | 36.10 | 12/20/07 | 12/20/07 | Brain-X Training | 1 | 36.10 |
| 84 | Denenny, Judy | Teacher | IS/Davis | misc hrly rate | 36.10 | 10/1/07 | 6/30/08 | Blackboard | 10 | 361.00 |
| 85 | Devine, Kelly | Teacher | Taft/Truex | misc hrly rate | 36.10 | 12/3/07 | 12/3/07 | Curriculum Planning | 1.5 | 54.15 |
| 86 | Doyle, Mary Catherine | Teacher | IS/Davis | misc hrly rate | 36.10 | 11/1/07 | 6/30/08 | Aeries Support & Training | 14 | 505.40 |
| 87 | Drouillard, Elizabeth | Teacher | Yorba/Truex | misc hrly rate | 36.10 | 9/10/07 | 6/11/08 | Math Tutor | 78 | 2,815.80 |
| 88 | Ellis, Jill | Teacher | Canyon HS/Truex | misc hrly rate | 36.10 | 12/15/07 | 6/12/08 | Critical Thinking | 15 | 541.50 |
| 89 | Elmes, Darcie | Teacher | Special Prog/Truex | misc hrly rate | 36.10 | 9/11/07 | 6/30/08 | GLAD Training Follow-up | 15 | 541.50 |
| 90 | Everakes, Kristi | Teacher | IS/Davis | misc hrly rate | 36.10 | 10/1/07 | 6/30/08 | Blackboard | 10 | 361.00 |
| 91 | Figueroa, Erin | Teacher | Palmyra/Truex | misc hrly rate | 36.10 | 12/1/07 | 6/30/08 | Intervention | 33 | 1,191.30 |
| 92 | Filson, Katherine | Teacher | Esplanade/Truex | misc hrly rate | 36.10 | 12/1/07 | 5/30/08 | PBIS Staff Development | 8 | 288.80 |
| 93 | Finn, Michael | Teacher | El Modena HS/Oves | misc hrly rate | 36.10 | 12/18/07 | 12/20/07 | Brain-X Training | 1 | 36.10 |
| 94 | Fish, Teri | Teacher | Nutrition/Pollock | payment | 250.00 | 10/1/07 | 1/30/08 | Teacher Liaison Nutrition | 1 | 250.00 |
| 95 | Fish, Teri | Teacher | Taft/Truex | misc hrly rate | 36.10 | 12/3/07 | 12/3/07 | Curriculum Planning | 1.5 | 54.15 |
| 96 | Fisher, Charles | Teacher | Orange HS/Oves | misc hrly rate | 36.10 | 12/20/07 | 12/20/07 | Brain-X Training | 1 | 36.10 |
| 97 | Fitch, Melissa | Teacher | Canyon HS/Truex | misc hrly rate | 36.10 | 2/15/08 | 6/12/08 | Critical Thinking | 15 | 541.50 |
| 98 | Flores, Paul | Teacher | IS/Davis | misc hrly rate | 36.10 | 10/1/07 | 6/30/08 | Blackboard | 10 | 361.00 |
| 99 | Floyd, Charlene | Teacher | Nutrition/Pollock | payment | 250.00 | 10/1/07 | 1/30/08 | Teacher Liaison Nutrition | 1 | 250.00 |

Staff Responsibility:

Ed Kisse, Assistant Superintendent-Human Resources

CLASSIFIED AND CERTIFICATED PERSONNEL REPORT
CERTIFICATED PERSONNEL

| | Name | Position | Administrative Unit | Schedule /Step/ Column | Rate | Eff. From | Date To | Comments | # of Units | Salary |
|-----|---------------------|----------|----------------------|------------------------|----------|-----------|----------|---------------------------|------------|----------|
| 100 | Franco, Kristi | Teacher | Parkside/Rohlander | misc hrly rate | 36.10 | 11/15/07 | 12/21/07 | Extra Support/Dale | 20 | 722.00 |
| 101 | Garcia, Diana | Teacher | Canyon HS/Reider | misc hrly rate | 36.10 | 11/14/07 | 6/12/08 | Credit Recovery | 106 | 3,826.60 |
| 102 | Gardnar, Stacy | Teacher | Jordan/Truex | misc hrly rate | 36.10 | 1/14/08 | 5/30/08 | Intervention | 260 | 9,386.00 |
| 103 | Gee, Rita | Teacher | Orange HS/Oves | misc hrly rate | 36.10 | 12/20/07 | 12/20/07 | Brain-X Training | 1 | 36.10 |
| 104 | Gillen, Debbie | Teacher | El Modena HS/Oves | misc hrly rate | 36.10 | 12/18/07 | 12/20/07 | Brain-X Training | 1 | 36.10 |
| 105 | Goldberg, Rodney | Teacher | Orange HS/Oves | misc hrly rate | 36.10 | 12/20/07 | 12/20/07 | Brain-X Training | 1 | 36.10 |
| 106 | Gomez, Diana | Teacher | El Modena HS/Oves | misc hrly rate | 36.10 | 12/18/07 | 12/20/07 | Brain-X Training | 1 | 36.10 |
| 107 | Gomez, Hilda | Teacher | Special Prog/Ochoa | misc hrly rate | 36.10 | 12/5/07 | 12/5/07 | Making GLAD Supplies | 1 | 36.10 |
| 108 | Gonzales, Patricia | Teacher | Taft/Truex | misc hrly rate | 36.10 | 12/3/07 | 12/3/07 | Curriculum Planning | 1.5 | 54.15 |
| 109 | Goodger, Elisha | Teacher | Taft/Truex | misc hrly rate | 36.10 | 12/3/07 | 12/3/07 | Curriculum Planning | 1.5 | 54.15 |
| 110 | Goodwin, Karen | Teacher | Nohl Canyon/Parker | misc hrly rate | 36.10 | 11/27/07 | 2/28/08 | Intervention | 25 | 902.50 |
| 111 | Green, Andrew | Teacher | Jordan/Ochoa | misc hrly rate | 36.10 | 1/14/08 | 5/2/08 | Tutor | 15 | 541.50 |
| 112 | Greenwald, Rochelle | Teacher | Lampson/Truex | misc hrly rate | 36.10 | 12/6/07 | 12/6/07 | Family Literacy | 2 | 72.20 |
| 113 | Greenwald, Rochelle | Teacher | Nutrition/Pollock | payment | 250.00 | 10/1/07 | 1/30/08 | Teacher Liaison Nutrition | 1 | 250.00 |
| 114 | Gribben, Amber | Teacher | BTSA/McNealy | payment | 117.00 | 7/1/07 | 12/31/07 | Off-Track Inservice | 4 | 468.00 |
| 115 | Hall, Gabriel | Teacher | La Veta/Ochoa | misc hrly rate | 36.10 | 12/5/07 | 6/30/08 | EL Advisors/Avenues Mtgs | 20 | 722.00 |
| 116 | Hawley, Jeff | Teacher | Anaheim Hills/Larson | stipend | 384.00 | 1/14/08 | 1/18/08 | Outdoor Science School | 1 | 384.00 |
| 117 | Hayward, Joanne | Teacher | Taft/Truex | misc hrly rate | 36.10 | 12/3/07 | 12/3/07 | Curriculum Planning | 1.5 | 54.15 |
| 118 | Henderson, Andrea | Teacher | Cambridge/Truex | misc hrly rate | 36.10 | 12/1/07 | 6/30/08 | At-Risk Tutor | 50 | 1,805.00 |
| 119 | Henkle, Judy | Teacher | Silverado/Truex | misc hrly rate | 36.10 | 12/12/07 | 6/11/08 | Preschool Assessments | 25 | 902.50 |
| 120 | Henton, Debbie | Teacher | Taft/Truex | misc hrly rate | 36.10 | 12/3/07 | 12/3/07 | Curriculum Planning | 1.5 | 54.15 |
| 121 | Herman, Steve | Teacher | Lampson/Truex | misc hrly rate | 36.10 | 12/6/07 | 12/6/07 | Family Literacy | 2 | 72.20 |
| 122 | Hernandez, Barbara | Teacher | PAR/McNealy | payment | 1,000.00 | 7/1/07 | 12/31/07 | Service to PAR | 2 | 2,000.00 |
| 123 | Higgins, Michael | Teacher | Chapman Hills/Merkow | stipend | 384.00 | 3/10/08 | 3/14/08 | Outdoor Science School | 1 | 384.00 |
| 124 | Higgins, Michael | Teacher | IS/Davis | misc hrly rate | 36.10 | 11/1/07 | 6/30/08 | Aeries Support & Training | 14 | 505.40 |
| 125 | Hojnacki, Jeffrey | Teacher | El Modena HS/Oves | misc hrly rate | 36.10 | 12/18/07 | 12/20/07 | Brain-X Training | 1 | 36.10 |
| 126 | Holmes, Alan | Teacher | Linda Vista/Osborn | noon sup rate | 18.35 | 11/30/07 | 6/9/08 | Noon Supervision | 118 | 2,165.30 |
| 127 | Hormuth, Kristen | Teacher | El Modena HS/Oves | misc hrly rate | 36.10 | 12/18/07 | 12/20/07 | Brain-X Training | 1 | 36.10 |
| 128 | Housky, Charlotte | Teacher | Special Prog/Ochoa | misc hrly rate | 36.10 | 12/5/07 | 12/5/07 | Making GLAD Supplies | 1 | 36.10 |
| 129 | Housky, Charlotte | Teacher | IS/Davis | misc hrly rate | 36.10 | 11/1/07 | 6/30/08 | Aeries Support & Training | 14 | 505.40 |
| 130 | Huynh, Nona | Teacher | Taft/Truex | misc hrly rate | 36.10 | 12/3/07 | 12/3/07 | Curriculum Planning | 1.5 | 54.15 |
| 131 | Hyun, Arnold | Teacher | Cerro Villa/Reider | misc hrly rate | 36.10 | 12/8/07 | 5/24/08 | Saturday School | 64 | 2,310.40 |
| 132 | Iadevia, Deborah | Teacher | Esplanade/Truex | misc hrly rate | 36.10 | 12/1/07 | 5/30/08 | PBIS Staff Development | 8 | 288.80 |
| 133 | Imhoff, Karen | Teacher | Orange HS/Oves | misc hrly rate | 36.10 | 12/20/07 | 12/20/07 | Brain-X Training | 1 | 36.10 |

Staff Responsibility:

Ed Kisse, Assistant Superintendent-Human Resources

CLASSIFIED AND CERTIFICATED PERSONNEL REPORT
CERTIFICATED PERSONNEL

| | Name | Position | Administrative Unit | Schedule /Step/ Column | Rate | Eff. From | Date To | Comments | # of Units | Salary |
|-----|---------------------|-----------|------------------------|------------------------|----------|-----------|----------|---------------------------|------------|-----------|
| 134 | Ireland, Richard | Teacher | IS/Davis | misc hrly rate | 36.10 | 11/1/07 | 6/30/08 | Aeries Support & Training | 14 | 505.40 |
| 135 | Jennings, Lori | Teacher | Esplanade/Truex | misc hrly rate | 36.10 | 1/14/08 | 5/2/08 | After School Tutoring | 30 | 1,083.00 |
| 136 | Jimmons, Trishna | Teacher | Anaheim Hills/Truex | misc hrly rate | 36.10 | 10/31/07 | 10/31/07 | Smart Board Training | 8 | 288.80 |
| 137 | Johnson, Johnny | Teacher | El Modena HS/Oves | misc hrly rate | 36.10 | 12/18/07 | 12/20/07 | Brain-X Training | 1 | 36.10 |
| 138 | Jones, Janet | Teacher | Lampson/Truex | misc hrly rate | 36.10 | 12/6/07 | 12/6/07 | Family Literacy | 2 | 72.20 |
| 139 | Karaffa, Debora | Teacher | Nutrition/Pollock | payment | 143.00 | 11/1/07 | 6/30/08 | Nutrition Network Grant | 100 | 14,300.00 |
| 140 | Kavanaugh, Chip | Teacher | IS/Davis | misc hrly rate | 36.10 | 10/1/07 | 6/30/08 | Blackboard | 10 | 361.00 |
| 141 | Kelly, Harriet | Teacher | PAR/McNealy | payment | 1,000.00 | 7/1/07 | 12/31/07 | Service to PAR | 1 | 1,000.00 |
| 142 | Kent, Susanne | Counselor | Yorba/Saraye | misc hrly rate | 36.10 | 9/7/07 | 6/11/08 | EL Tutor | 2 | 72.20 |
| 143 | Keogh, Arlene | Teacher | El Modena HS/Oves | misc hrly rate | 36.10 | 12/18/07 | 12/20/07 | Brain-X Training | 1 | 36.10 |
| 144 | Kesoglou, Janet | Teacher | Lampson/Truex | misc hrly rate | 36.10 | 12/6/07 | 12/6/07 | Family Literacy | 2 | 72.20 |
| 145 | Kidde, Donna | Teacher | Orange HS/Oves | misc hrly rate | 36.10 | 12/20/07 | 12/20/07 | Brain-X Training | 1 | 36.10 |
| 146 | Kliner, Joshua | Teacher | El Modena HS/Oves | misc hrly rate | 36.10 | 12/18/07 | 12/20/07 | Brain-X Training | 1 | 36.10 |
| 147 | Koch, Linda | Teacher | El Modena HS/Oves | misc hrly rate | 36.10 | 12/18/07 | 12/20/07 | Brain-X Training | 1 | 36.10 |
| 148 | Koehler, Jessica | Teacher | Reading First/Truex | payment | 117.00 | 21/10/07 | 12/10/07 | Off-Track Inservice | 1 | 117.00 |
| 149 | Kralick, Kathy | Teacher | IS/Davis | misc hrly rate | 36.10 | 11/1/07 | 6/30/08 | Aeries Support & Training | 14 | 505.40 |
| 150 | Kvalstad, Nancy | Teacher | Fairhaven/Ochoa | misc hrly rate | 36.10 | 10/23/07 | 5/1/08 | EL Tutor | 37 | 1,335.70 |
| 151 | Lamphier, Kristen | Teacher | El Modena HS/Oves | misc hrly rate | 36.10 | 12/18/07 | 12/20/07 | Brain-X Training | 1 | 36.10 |
| 152 | Lane, Dawn | Teacher | Taft/Truex | misc hrly rate | 36.10 | 12/3/07 | 12/3/07 | Curriculum Planning | 1.5 | 54.15 |
| 153 | Lantz, Leigh | Teacher | Nutrition/Pollock | payment | 250.00 | 10/1/07 | 1/30/08 | Teacher Liaison Nutrition | 1 | 250.00 |
| 154 | Lee, David | Teacher | El Modena HS/Oves | misc hrly rate | 36.10 | 12/18/07 | 12/20/07 | Brain-X Training | 1 | 36.10 |
| 155 | Lee, Nancy | Teacher | Nutrition/Pollock | payment | 250.00 | 10/1/07 | 1/30/08 | Teacher Liaison Nutrition | 1 | 250.00 |
| 156 | Lee, Nancy | Teacher | Jordan/Ochoa | misc hrly rate | 36.10 | 1/14/08 | 5/2/08 | Tutor | 30 | 1,083.00 |
| 157 | Lewis, Ginger | Teacher | SpEd/Rohlander | misc hrly rate | 36.10 | 11/1/07 | 11/30/07 | IEP's & Assessments | 5.5 | 198.55 |
| 158 | Locklear, Susan | Teacher | BTSA/McNealy | payment | 1,144.00 | 7/1/07 | 12/31/07 | Service to PAR | 1 | 1,144.00 |
| 159 | Lombardo, Sandy | Teacher | Jordan/Ochoa | misc hrly rate | 36.10 | 1/14/08 | 5/2/08 | Tutor | 30 | 1,083.00 |
| 160 | Longfellow, Susan | Teacher | Cambridge/Truex | misc hrly rate | 36.10 | 12/1/07 | 6/30/08 | At-Risk Tutor | 50 | 1,805.00 |
| 161 | Longobardy, Antonia | Teacher | IS/Davis | misc hrly rate | 36.10 | 10/1/07 | 6/30/08 | Blackboard | 10 | 361.00 |
| 162 | Lovell, Dianne | Teacher | SpEd/Rohlander | misc hrly rate | 36.10 | 12/10/07 | 6/30/08 | Home Teaching | 124 | 4,476.40 |
| 163 | Lukenbill, Amy | Teacher | Cambridge/Truex | misc hrly rate | 36.10 | 12/1/07 | 6/30/08 | At-Risk Tutor | 50 | 1,805.00 |
| 164 | Lukenbill, Amy | Teacher | Special Prog/Ochoa | misc hrly rate | 36.10 | 12/5/07 | 12/5/07 | Making GLAD Supplies | 1 | 36.10 |
| 165 | Lyles, Zsuzsanna | Teacher | Handy/Truex | misc hrly rate | 36.10 | 9/17/07 | 6/30/08 | Native American Tutor | 55.5 | 2,003.55 |
| 166 | Lyles, Zsuzsanna | Teacher | Special Prog/Ochoa | misc hrly rate | 36.10 | 12/5/07 | 12/5/07 | Making GLAD Supplies | 1 | 36.10 |
| 167 | MacLachlan, Roger | Teacher | El Modena HS/Briquelet | misc hrly rate | 36.10 | 12/1/07 | 6/30/08 | Saturday Work Study | 6 | 216.60 |

Staff Responsibility:

Ed Kisse, Assistant Superintendent-Human Resources

CLASSIFIED AND CERTIFICATED PERSONNEL REPORT
CERTIFICATED PERSONNEL

| | Name | Position | Administrative Unit | Schedule /Step/ Column | Rate | Eff. From | Date To | Comments | # of Units | Salary |
|-----|---------------------|----------|-------------------------|------------------------|----------|-----------|----------|------------------------------|------------|----------|
| 168 | Madsen, Lori | Teacher | Chapman Hills/Merkow | stipend | 384.00 | 3/10/08 | 3/14/08 | Outdoor Science School | 1 | 384.00 |
| 169 | Mahoney, Don | Teacher | El Modena HS/Oves | misc hrly rate | 36.10 | 12/18/07 | 12/20/07 | Brain-X Training | 1 | 36.10 |
| 170 | Mai, Jennifer | Teacher | Taft/Truex | misc hrly rate | 36.10 | 12/3/07 | 12/3/07 | Curriculum Planning | 1.5 | 54.15 |
| 171 | Mai, Jennifer | Teacher | IS/Davis | misc hrly rate | 36.10 | 11/1/07 | 6/30/08 | Aeries Support & Training | 14 | 505.40 |
| 172 | Maldonado, Ricardo | Teacher | IS/Davis | misc hrly rate | 36.10 | 10/1/07 | 6/30/08 | Blackboard | 10 | 361.00 |
| 173 | Maloof-Owen, Jeanet | Teacher | Esplanade/Truex | misc hrly rate | 36.10 | 12/1/07 | 5/30/08 | PBIS Staff Development | 8 | 288.80 |
| 174 | Manley, Janis | Teacher | IS/Davis | misc hrly rate | 36.10 | 10/1/07 | 6/30/08 | Blackboard | 10 | 361.00 |
| 175 | Manley, Janis | Teacher | Taft/Truex | misc hrly rate | 36.10 | 12/3/07 | 12/3/07 | Curriculum Planning | 1.5 | 54.15 |
| 176 | Mann, Abbie | Teacher | IS/Davis | misc hrly rate | 36.10 | 10/1/07 | 6/30/08 | Blackboard | 10 | 361.00 |
| 177 | Martel-Cody, Anne | Teacher | Fairhaven/Truex | misc hrly rate | 36.10 | 10/18/07 | 4/30/08 | SES Tutor | 20 | 722.00 |
| 178 | Martel-Cody, Anne | Teacher | Fairhaven/Ochoa | misc hrly rate | 36.10 | 10/18/07 | 4/30/08 | SES Tutor | 20 | 722.00 |
| 179 | Martinez, Rebecca | Teacher | El Modena HS/Briquelet | detention | 24.46 | 12/1/07 | 6/30/08 | Saturday Work Study | 6 | 146.76 |
| 180 | Martinez, Rebecca | Teacher | El Modena HS/Oves | misc hrly rate | 36.10 | 12/18/07 | 12/20/07 | Brain-X Training | 1 | 36.10 |
| 181 | Marzolo, Patricia | Teacher | IS/Davis | misc hrly rate | 36.10 | 10/1/07 | 6/30/08 | Blackboard | 10 | 361.00 |
| 182 | Matsuoka, Marcie | Teacher | Taft/Truex | misc hrly rate | 36.10 | 12/3/07 | 12/3/07 | Curriculum Planning | 1.5 | 54.15 |
| 183 | McCarthy, John | Teacher | PAR/McNealy | payment | 1,000.00 | 7/1/07 | 12/31/07 | Service to PAR | 1 | 1,000.00 |
| 184 | McClure, Pamela | Teacher | Esplanade/Truex | misc hrly rate | 36.10 | 12/1/07 | 5/30/08 | PBIS Staff Development | 8 | 288.80 |
| 185 | McCullough, Mary | Teacher | Esplanade/Truex | misc hrly rate | 36.10 | 12/1/07 | 5/30/08 | PBIS Staff Development | 8 | 288.80 |
| 186 | McCullough, Mary | Teacher | Nutrition/Pollock | payment | 250.00 | 10/1/07 | 1/30/08 | Teacher Liaison Nutrition | 1 | 250.00 |
| 187 | McGowan, Jeanne | Teacher | Lampson/Truex | misc hrly rate | 36.10 | 12/6/07 | 12/6/07 | Family Literacy | 2 | 72.20 |
| 188 | McGuire, Akira | Teacher | IS/Davis | misc hrly rate | 36.10 | 11/1/07 | 6/30/08 | Aeries Support & Training | 14 | 505.40 |
| 189 | McMillen, Molly | Teacher | Esplanade/Truex | misc hrly rate | 36.10 | 12/1/07 | 5/30/08 | PBIS Staff Development | 8 | 288.80 |
| 190 | McMillen, Molly | Teacher | Linda Vista/Osborn | misc hrly rate | 36.10 | 11/1/07 | 12/21/07 | School Site Plan | 1 | 36.10 |
| 191 | McVey, Debra | Teacher | Lampson/Truex | misc hrly rate | 36.10 | 12/6/07 | 12/6/07 | Family Literacy | 2 | 72.20 |
| 192 | Meadows, Melinda | Teacher | Olive/Ochoa | misc hrly rate | 36.10 | 1/7/08 | 5/30/08 | EL Tutor | 115 | 4,151.50 |
| 193 | Medart, Alissa | Teacher | Canyon Hills/Rohlander | misc hrly rate | 36.10 | 10/2/07 | 10/30/07 | IEP's & Back to School Night | 45 | 1,624.50 |
| 194 | Meehan, Shannon | Teacher | Running Springs/Stotera | payment | 150.00 | 1/28/08 | 1/28/08 | Science Workshop Presenter | 1 | 150.00 |
| 195 | Merlihan, Kimberly | Teacher | El Modena HS/Oves | misc hrly rate | 36.10 | 12/18/07 | 12/20/07 | Brain-X Training | 1 | 36.10 |
| 196 | Meyer, Ellen | Teacher | IS/Davis | misc hrly rate | 36.10 | 10/1/07 | 6/30/08 | Blackboard | 10 | 361.00 |
| 197 | Miles, Lisa | Teacher | Nutrition/Pollock | payment | 250.00 | 10/1/07 | 1/30/08 | Teacher Liaison Nutrition | 1 | 250.00 |
| 198 | Miller, Erin | Teacher | Canyon HS/Truex | misc hrly rate | 36.10 | 12/15/07 | 6/12/08 | Critical Thinking | 15 | 541.50 |
| 199 | Miyamoto, Kristen | Teacher | IS/Davis | misc hrly rate | 36.10 | 10/1/07 | 6/30/08 | Blackboard | 10 | 361.00 |
| 200 | Moniz, Mia | Teacher | IS/Davis | misc hrly rate | 36.10 | 10/1/07 | 6/30/08 | Blackboard | 10 | 361.00 |
| 201 | Moore, Bradley | Teacher | IS/Davis | misc hrly rate | 36.10 | 10/1/07 | 6/30/08 | Blackboard | 10 | 361.00 |

Staff Responsibility:
Ed Kissee, Assistant Superintendent-Human Resources

CLASSIFIED AND CERTIFICATED PERSONNEL REPORT
CERTIFICATED PERSONNEL

| | Name | Position | Administrative Unit | Schedule /Step/ Column | Rate | Eff. From | Date To | Comments | # of Units | Salary |
|-----|-------------------|----------|----------------------|------------------------|--------|-----------|----------|---------------------------|------------|-----------|
| 202 | Morris, Ami | Teacher | Esplanade/Truex | misc hrly rate | 36.10 | 1/14/08 | 5/2/08 | After School Tutoring | 15 | 541.50 |
| 203 | Mueller, Steve | Teacher | IS/Davis | misc hrly rate | 36.10 | 11/1/07 | 6/30/08 | Aeries Support & Training | 14 | 505.40 |
| 204 | Mull, Vicki | Teacher | El Modena HS/Oves | misc hrly rate | 36.10 | 12/18/07 | 12/20/07 | Brain-X Training | 1 | 36.10 |
| 205 | Muller, Louise | Teacher | Orange HS/Oves | misc hrly rate | 36.10 | 12/20/07 | 12/20/07 | Brain-X Training | 1 | 36.10 |
| 206 | Murphy, Dawn | Teacher | Yorba/Truex | misc hrly rate | 36.10 | 9/10/07 | 6/11/08 | Math Tutor | 78 | 2,815.80 |
| 207 | Murphy, Sherry | Teacher | Orange HS/Oves | misc hrly rate | 36.10 | 12/20/07 | 12/20/07 | Brain-X Training | 1 | 36.10 |
| 208 | Murray, Janis | Teacher | Linda Vista/Osborn | stipend | 384.00 | 3/10/08 | 3/14/08 | Outdoor Science School | 1 | 384.00 |
| 209 | Myers, Kristeena | Teacher | Taft/Truex | misc hrly rate | 36.10 | 12/13/07 | 5/30/08 | Intervention | 182 | 6,570.20 |
| 210 | Myers, Kristeena | Teacher | Taft/Truex | misc hrly rate | 36.10 | 12/13/07 | 5/30/08 | Intervention | 46 | 1,660.60 |
| 211 | Newby, Jennifer | Teacher | IS/Davis | misc hrly rate | 36.10 | 10/1/07 | 6/30/08 | Blackboard | 10 | 361.00 |
| 212 | Newby, Jennifer | Teacher | Nutrition/Pollock | payment | 250.00 | 10/1/07 | 1/30/08 | Teacher Liaison Nutrition | 1 | 250.00 |
| 213 | Nghiem, Hieu | Teacher | Lampson/Truex | misc hrly rate | 36.10 | 12/6/07 | 12/6/07 | Family Literacy | 2 | 72.20 |
| 214 | Nghiem, Quynh | Teacher | Lampson/Truex | misc hrly rate | 36.10 | 12/6/07 | 12/6/07 | Family Literacy | 2 | 72.20 |
| 215 | Nguyen, Kimoanh | Teacher | Portola/Truex | misc hrly rate | 36.10 | 11/1/07 | 6/12/08 | Homework Club | 128 | 4,620.80 |
| 216 | Noble, Carolyn | Teacher | SpEd/Rohlander | daily rate | 397.35 | 8/24/07 | 6/16/08 | Speech Support | 77 | 30,596.10 |
| 217 | Norquist, Jessica | Teacher | IS/Davis | misc hrly rate | 36.10 | 10/1/07 | 6/30/08 | Blackboard | 10 | 361.00 |
| 218 | Norquist, Jessica | Teacher | Special Prog/Truex | misc hrly rate | 36.10 | 9/11/07 | 6/30/08 | GLAD Training Follow-up | 15 | 541.50 |
| 219 | Norquist, Jessica | Teacher | Taft/Truex | misc hrly rate | 36.10 | 12/3/07 | 12/3/07 | Curriculum Planning | 1.5 | 54.15 |
| 220 | Noxsel, Kathy | Teacher | IS/Davis | misc hrly rate | 36.10 | 10/1/07 | 6/30/08 | Blackboard | 10 | 361.00 |
| 221 | Nussbaum, William | Teacher | IS/Davis | misc hrly rate | 36.10 | 10/1/07 | 6/30/08 | Blackboard | 10 | 361.00 |
| 222 | O'Connor, Richard | Teacher | IS/Davis | misc hrly rate | 36.10 | 10/1/07 | 6/30/08 | Blackboard | 10 | 361.00 |
| 223 | O'Connor, Richard | Teacher | IS/Davis | misc hrly rate | 36.10 | 11/1/07 | 6/30/08 | Aeries Support & Training | 14 | 505.40 |
| 224 | Odle, Jeanette | Teacher | Crescent Inter/Truex | misc hrly rate | 36.10 | 11/15/07 | 3/21/08 | Native American Tutor | 15 | 541.50 |
| 225 | Odle, Jeanette | Teacher | Crescent Inter/Truex | misc hrly rate | 36.10 | 11/15/07 | 3/21/08 | Native American Tutor | 15 | 541.50 |
| 226 | Ohman, Debi | Teacher | IS/Davis | misc hrly rate | 36.10 | 11/1/07 | 6/30/08 | Aeries Support & Training | 14 | 505.40 |
| 227 | Othmer, Brigitte | Teacher | El Modena HS/Oves | misc hrly rate | 36.10 | 12/18/07 | 12/20/07 | Brain-X Training | 1 | 36.10 |
| 228 | Ottens, Cindy | Teacher | IS/Davis | misc hrly rate | 36.10 | 11/1/07 | 6/30/08 | Aeries Support & Training | 14 | 505.40 |
| 229 | Parent, Debra | Teacher | Esplanade/Truex | misc hrly rate | 36.10 | 12/1/07 | 5/30/08 | PBIS Staff Development | 8 | 288.80 |
| 230 | Paschal, Rachel | Teacher | Orange HS/Oves | misc hrly rate | 36.10 | 12/20/07 | 12/20/07 | Brain-X Training | 1 | 36.10 |
| 231 | Paz, Danica | Teacher | Nutrition/Pollock | payment | 250.00 | 2/1/07 | 6/30/07 | Teacher Liaison Nutrition | 1 | 250.00 |
| 232 | Paz, Danica | Teacher | Nutrition/Pollock | payment | 250.00 | 10/1/07 | 1/30/08 | Teacher Liaison Nutrition | 1 | 250.00 |
| 233 | Petersen, Deidre | Teacher | PAR/McNealy | payment | 750.00 | 7/1/07 | 12/31/07 | Service to PAR | 1 | 750.00 |
| 234 | Powers, Andrea | Teacher | Taft/Ochoa | misc hrly rate | 36.10 | 11/29/07 | 12/7/07 | EL Tutor | 4 | 144.40 |
| 235 | Powers, Andrea | Teacher | Taft/Truex | misc hrly rate | 36.10 | 12/3/07 | 12/3/07 | Curriculum Planning | 1.5 | 54.15 |

Staff Responsibility:
Ed Kissee, Assistant Superintendent-Human Resources

CLASSIFIED AND CERTIFICATED PERSONNEL REPORT
CERTIFICATED PERSONNEL

| | Name | Position | Administrative Unit | Schedule /Step/ Column | Rate | Eff. From | Date To | Comments | # of Units | Salary |
|-----|--------------------------|----------|------------------------|------------------------|----------|-----------|----------|---------------------------|------------|----------|
| 236 | Presley, Alexis | Teacher | El Modena HS/Davis | misc hrly rate | 36.10 | 7/1/07 | 6/30/08 | Aeries Support & Training | 28 | 1,010.80 |
| 237 | Priest, Cathy | Teacher | IS/Davis | misc hrly rate | 36.10 | 10/1/07 | 6/30/08 | Blackboard | 10 | 361.00 |
| 238 | Raun, Lauren | Teacher | Canyon HS/Truex | misc hrly rate | 36.10 | 12/15/07 | 6/12/08 | Critical Thinking | 15 | 541.50 |
| 239 | Rawalt, Deryk | Teacher | IS/Davis | misc hrly rate | 36.10 | 11/1/07 | 6/30/08 | Aeries Support & Training | 14 | 505.40 |
| 240 | Ray, Robin | Teacher | IS/Davis | misc hrly rate | 36.10 | 10/1/07 | 6/30/08 | Blackboard | 10 | 361.00 |
| 241 | Ray, Robin | Teacher | Nutrition/Pollock | payment | 250.00 | 10/1/07 | 1/30/08 | Teacher Liaison Nutrition | 1 | 250.00 |
| 242 | Reichert, Sabine | Teacher | Esplanade/Truex | misc hrly rate | 36.10 | 1/14/08 | 5/2/08 | After School Tutoring | 15 | 541.50 |
| 243 | Reid, Andrea | Teacher | Esplanade/Truex | misc hrly rate | 36.10 | 1/14/08 | 5/2/08 | After School Tutoring | 30 | 1,083.00 |
| 244 | Reyes, Jose | Teacher | Canyon HS/Bowden | misc hrly rate | 36.10 | 12/1/07 | 6/12/08 | Art Inventory | 10 | 361.00 |
| 245 | Ricupito, Jeffrey | Teacher | Yorba/Saraye | misc hrly rate | 36.10 | 9/7/07 | 6/11/08 | EL Tutor | 2 | 72.20 |
| 246 | Riley, Kelly | Teacher | Nutrition/Pollock | payment | 250.00 | 10/1/07 | 1/30/08 | Teacher Liaison Nutrition | 1 | 250.00 |
| 247 | Robinson, Bonnie | Teacher | IS/Davis | misc hrly rate | 36.10 | 10/1/07 | 6/30/08 | Blackboard | 10 | 361.00 |
| 248 | Robinson, Bonnie | Teacher | Fairhaven/Ochoa | misc hrly rate | 36.10 | 10/15/07 | 6/30/08 | SES Site Facilitator | 30 | 1,083.00 |
| 249 | Robinson, Maureen | Teacher | IS/Davis | misc hrly rate | 36.10 | 11/1/07 | 6/30/08 | Aeries Support & Training | 14 | 505.40 |
| 250 | Rockwell, Pamela | Teacher | PAR/McNealy | payment | 1,000.00 | 7/1/07 | 12/31/07 | Service to PAR | 1 | 1,000.00 |
| 251 | Roeck, Sonja | Teacher | Cerro Villa/Reider | misc hrly rate | 36.10 | 12/8/07 | 5/24/08 | Saturday School | 64 | 2,310.40 |
| 252 | Roman, Patricia | Teacher | Taft/Truex | misc hrly rate | 36.10 | 12/3/07 | 12/3/07 | Curriculum Planning | 1.5 | 54.15 |
| 253 | Rose, Jamie | Teacher | Nohl Canyon/Parker | misc hrly rate | 36.10 | 1/7/08 | 5/30/08 | Intervention | 5 | 180.50 |
| 254 | Roth, Sarah | Teacher | Lampson/Truex | misc hrly rate | 36.10 | 12/6/07 | 12/6/07 | Family Literacy | 2 | 72.20 |
| 255 | Roth, Susan | Teacher | Taft/Truex | misc hrly rate | 36.10 | 12/3/07 | 12/3/07 | Curriculum Planning | 1.5 | 54.15 |
| 256 | Roth, Todd | Teacher | Lampson/Truex | misc hrly rate | 36.10 | 12/6/07 | 12/6/07 | Family Literacy | 2 | 72.20 |
| 257 | Rotsios, Christine | Teacher | Cambridge/Truex | misc hrly rate | 36.10 | 12/1/07 | 6/30/08 | At-Risk Tutor | 50 | 1,805.00 |
| 258 | Ruiz, Patricia | Teacher | Nutrition/Pollock | payment | 250.00 | 10/1/07 | 1/30/08 | Teacher Liaison Nutrition | 1 | 250.00 |
| 259 | Ruiz, Patricia | Teacher | IS/Davis | misc hrly rate | 36.10 | 11/1/07 | 6/30/08 | Aeries Support & Training | 14 | 505.40 |
| 260 | Salio, Christopher | Teacher | El Modena HS/Briquelet | noon sup rate | 18.35 | 12/1/07 | 6/30/08 | Noon Supervision | 90 | 1,651.50 |
| 261 | Salio, Christopher | Teacher | El Modena HS/Briquelet | detention | 24.46 | 2/1/07 | 6/30/08 | Saturday Work Study | 6 | 146.76 |
| 262 | Salio, Christopher | Teacher | El Modena HS/Oves | misc hrly rate | 36.10 | 12/18/07 | 12/20/07 | Brain-X Training | 1 | 36.10 |
| 263 | Saltikov, Olay | Teacher | Esplanade/Truex | misc hrly rate | 36.10 | 12/1/07 | 5/30/08 | PBIS Staff Development | 8 | 288.80 |
| 264 | Saukkola, Carol | Teacher | IS/Davis | misc hrly rate | 36.10 | 11/1/07 | 6/30/08 | Aeries Support & Training | 14 | 505.40 |
| 265 | Schaal, Joyce | Teacher | Taft/Truex | misc hrly rate | 36.10 | 12/3/07 | 12/3/07 | Curriculum Planning | 1.5 | 54.15 |
| 266 | Schlossnagle, Gary | Teacher | El Modena HS/Oves | misc hrly rate | 36.10 | 12/18/07 | 12/20/07 | Brain-X Training | 1 | 36.10 |
| 267 | Schram, Heather | Teacher | Esplanade/Truex | misc hrly rate | 36.10 | 12/1/07 | 5/30/08 | PBIS Staff Development | 8 | 288.80 |
| 268 | Scollick, Susan | Teacher | Taft/Truex | misc hrly rate | 36.10 | 12/3/07 | 12/3/07 | Curriculum Planning | 1.5 | 54.15 |
| 269 | Scott Griffith, Christie | Teacher | Esplanade/Truex | misc hrly rate | 36.10 | 12/1/07 | 5/30/08 | PBIS Staff Development | 8 | 288.80 |

Staff Responsibility:
Ed Kissee, Assistant Superintendent-Human Resources

CLASSIFIED AND CERTIFICATED PERSONNEL REPORT
CERTIFICATED PERSONNEL

| | Name | Position | Administrative Unit | Schedule /Step/ Column | Rate | Eff. From | Date To | Comments | # of Units | Salary |
|-----|----------------------|----------|------------------------|------------------------|----------|-----------|----------|---------------------------|------------|----------|
| 270 | Scott, Brenda | Teacher | Yorba/Saraye | misc hrly rate | 36.10 | 9/7/07 | 6/11/08 | EL Tutor | 2 | 72.20 |
| 271 | Self, Gino | Teacher | IS/Davis | misc hrly rate | 36.10 | 10/1/07 | 6/30/08 | Blackboard | 10 | 361.00 |
| 272 | Sentell, Barbara | Teacher | PAR/McNealy | payment | 1,000.00 | 7/1/07 | 12/31/07 | Service to PAR | 2 | 2,000.00 |
| 273 | Shepher, Monique | Teacher | Taft/Truex | misc hrly rate | 36.10 | 12/3/07 | 12/3/07 | Curriculum Planning | 1.5 | 54.15 |
| 274 | Sherman, Lindsey | Teacher | Linda Vista/Osborn | stipend | 384.00 | 3/10/08 | 3/14/08 | Outdoor Science School | 1 | 384.00 |
| 275 | Shishani, LaDeana | Teacher | IS/Davis | misc hrly rate | 36.10 | 10/1/07 | 6/30/08 | Blackboard | 10 | 361.00 |
| 276 | Sire, Laura | Teacher | Fairhaven/Ochoa | misc hrly rate | 36.10 | 10/23/07 | 5/1/08 | EL Tutor | 8 | 288.80 |
| 277 | Sloma, Jennifer | Teacher | Handy/Ochoa | misc hrly rate | 36.10 | 3/6/08 | 5/28/08 | EL Tutor | 137 | 4,945.70 |
| 278 | Smith, Julie | Teacher | Esplanade/Truex | misc hrly rate | 36.10 | 12/1/07 | 5/30/08 | PBIS Staff Development | 8 | 288.80 |
| 279 | Snider, Keith | Teacher | IS/Davis | misc hrly rate | 36.10 | 10/1/07 | 6/30/08 | Blackboard | 10 | 361.00 |
| 280 | Snider, Keith | Teacher | Esplanade/Truex | misc hrly rate | 36.10 | 12/1/07 | 5/30/08 | PBIS Staff Development | 8 | 288.80 |
| 281 | Snyder, Christopher | Teacher | El Modena HS/Oves | misc hrly rate | 36.10 | 12/18/07 | 12/20/07 | Brain-X Training | 1 | 36.10 |
| 282 | Stewart, Michelle | Teacher | Villa Park HS/Reider | misc hrly rate | 36.10 | 11/14/07 | 6/11/08 | Credit Recovery | 106 | 3,826.60 |
| 283 | Stiles, Clay | Teacher | El Modena HS/Briquelet | detention | 24.46 | 12/1/07 | 6/30/08 | Saturday Work Study | 6 | 146.76 |
| 284 | Stucker, Linda | Teacher | Lampson/Truex | misc hrly rate | 36.10 | 12/6/07 | 12/6/07 | Family Literacy | 2 | 72.20 |
| 285 | Tanioka, Christopher | Teacher | Anaheim Hills/Larson | stipend | 384.00 | 1/14/08 | 1/8/07 | Outdoor Science School | 1 | 384.00 |
| 286 | Tanioka, Christopher | Teacher | IS/Davis | misc hrly rate | 36.10 | 11/1/07 | 6/30/08 | Aeries Support & Training | 14 | 505.40 |
| 287 | Thomas, Curt | Teacher | Orange HS/Oves | misc hrly rate | 36.10 | 12/20/07 | 12/20/07 | Brain-X Training | 1 | 36.10 |
| 288 | Thomas, Cynthia | Teacher | Nutrition/Pollock | misc hrly rate | 36.10 | 2/1/08 | 6/30/08 | Nutrition Network Grant | 28 | 1,010.80 |
| 289 | Thompson, Jodi | Teacher | Lampson/Truex | misc hrly rate | 36.10 | 12/6/07 | 12/6/07 | Family Literacy | 2 | 72.20 |
| 290 | Tippets, Rebekah | Teacher | Esplanade/Truex | misc hrly rate | 36.10 | 12/1/07 | 5/30/08 | PBIS Staff Development | 8 | 288.80 |
| 291 | Tippets, Rebekah | Teacher | IS/Davis | misc hrly rate | 36.10 | 11/1/07 | 6/30/08 | Aeries Support & Training | 14 | 505.40 |
| 292 | Torkelson, Owen | Teacher | El Modena HS/Oves | misc hrly rate | 36.10 | 12/18/07 | 12/20/07 | Brain-X Training | 1 | 36.10 |
| 293 | Torres, Richard | Teacher | Cambridge/Truex | misc hrly rate | 36.10 | 12/1/07 | 6/30/08 | At-Risk Tutor | 50 | 1,805.00 |
| 294 | Torres, Richard | Teacher | IS/Davis | misc hrly rate | 36.10 | 11/1/07 | 6/30/08 | Aeries Support & Training | 14 | 505.40 |
| 295 | Torres, Rick | Teacher | IS/Davis | misc hrly rate | 36.10 | 10/1/07 | 6/30/08 | Blackboard | 10 | 361.00 |
| 296 | Tuttle, Heather | Teacher | Special Prog/Ochoa | misc hrly rate | 36.10 | 12/5/07 | 12/5/07 | Making GLAD Supplies | 1 | 36.10 |
| 297 | Venckus, Michelle | Teacher | IS/Davis | misc hrly rate | 36.10 | 10/1/07 | 6/30/08 | Blackboard | 10 | 361.00 |
| 298 | Verostek, Karen | Teacher | El Modena HS/Oves | misc hrly rate | 36.10 | 12/18/07 | 12/20/07 | Brain-X Training | 1 | 36.10 |
| 299 | Visconti, Jennifer | Teacher | Orange HS/Reider | misc hrly rate | 36.10 | 10/25/07 | 6/12/08 | PLATO Program | 106 | 3,826.60 |
| 300 | Vitullo, Mary | Teacher | IS/Davis | misc hrly rate | 36.10 | 10/1/07 | 6/30/08 | Blackboard | 10 | 361.00 |
| 301 | Walker, Brooke | Teacher | Reading First/Truex | payment | 117.00 | 21/10/07 | 12/10/07 | Off-Track Inservice | 1 | 117.00 |
| 302 | Ward, Elizabeth | Teacher | El Modena HS/Oves | misc hrly rate | 36.10 | 12/18/07 | 12/20/07 | Brain-X Training | 1 | 36.10 |
| 303 | Ward, Michele | Teacher | IS/Davis | misc hrly rate | 36.10 | 10/1/07 | 6/30/08 | Blackboard | 10 | 361.00 |

Staff Responsibility:
Ed Kissee, Assistant Superintendent-Human Resources

CLASSIFIED AND CERTIFICATED PERSONNEL REPORT
CERTIFICATED PERSONNEL

| | Name | Position | Administrative Unit | Schedule /Step/ Column | Rate | Eff. From | Date To | Comments | # of Units | Salary |
|-----|---|-----------|----------------------|------------------------|----------|-----------|----------|---------------------------|------------|-----------|
| 304 | Wartenberg, Christine | Teacher | Fairhaven/Ochoa | misc hrly rate | 36.10 | 10/23/07 | 5/1/08 | EL Tutor | 37 | 1,335.70 |
| 305 | Widdall, Ken | Teacher | El Modena HS/Oves | misc hrly rate | 36.10 | 12/18/07 | 12/20/07 | Brain-X Training | 1 | 36.10 |
| 306 | Wielenga, Laurie | Teacher | Orange HS/Oves | misc hrly rate | 36.10 | 12/20/07 | 12/20/07 | Brain-X Training | 1 | 36.10 |
| 307 | Wiley, Christine | Teacher | IS/Davis | misc hrly rate | 36.10 | 11/1/07 | 6/30/08 | Aeries Support & Training | 14 | 505.40 |
| 308 | Williams, Elise | Teacher | Reading First/Truex | payment | 117.00 | 21/10/07 | 12/10/07 | Off-Track Inservice | 1 | 117.00 |
| 309 | Williams, Scott | Teacher | IS/Davis | misc hrly rate | 36.10 | 11/1/07 | 6/30/08 | Aeries Support & Training | 14 | 505.40 |
| 310 | Williams, Terry | Teacher | Yorba/Saraye | misc hrly rate | 36.10 | 9/7/07 | 6/11/08 | EL Tutor | 2 | 72.20 |
| 311 | Wilson, Francesca | Teacher | Yorba/Truex | misc hrly rate | 36.10 | 9/10/07 | 6/11/08 | Math Tutor | 78 | 2,815.80 |
| 312 | Wilson, Leah | Teacher | Nutrition/Pollock | payment | 143.00 | 11/1/07 | 6/30/08 | Nutrition Network Grant | 100 | 14,300.00 |
| 313 | Wilson, Lisa | Counselor | Villa Park HS/Reider | misc hrly rate | 36.10 | 11/14/07 | 6/11/08 | Credit Recovery | 106 | 3,826.60 |
| 314 | Windt, Betty | Teacher | Esplanade/Jones | misc hrly rate | 36.10 | 6/1/06 | 7/30/06 | Classroom Modernization | 12 | 433.20 |
| 315 | Wong, Julie | Teacher | Nutrition/Pollock | payment | 250.00 | 10/1/07 | 1/30/08 | Teacher Liaison Nutrition | 1 | 250.00 |
| 316 | Wooden, Juli | Teacher | Taft/Truex | misc hrly rate | 36.10 | 12/3/07 | 12/3/07 | Curriculum Planning | 1.5 | 54.15 |
| 317 | Wun, Alisha | Teacher | Nutrition/Pollock | payment | 250.00 | 10/1/07 | 1/30/08 | Teacher Liaison Nutrition | 1 | 250.00 |
| 318 | Wyckoff, Nicole | Teacher | Nutrition/Pollock | payment | 250.00 | 10/1/07 | 1/30/08 | Teacher Liaison Nutrition | 1 | 250.00 |
| | | | | | | | | | | |
| | Extra Pay Coaches | | | | | | | | | |
| | | | | | | | | | | |
| | Thacker, Andrew | Teacher | Canyon HS/Bowden | Stipend | 400.00 | 8/1/07 | 11/31/07 | F/S Boys' Waterpolo | 1 | 400.00 |
| | Thacker, Andrew | Teacher | Canyon HS/Bowden | Stipend | 2,400.00 | 11/1/07 | 2/29/08 | V. Girls' WaterPolo/BPD | 1 | 2,400.00 |
| | Davidson, Erik | Teacher | Canyon HS/Bowden | Stipend | 1,964.00 | 8/1/07 | 11/31/07 | F/S Boys' WaterPolo | 1 | 1,964.00 |
| | Rommelfanger, S. | Teacher | Canyon HS/Bowden | Stipend | 1,543.00 | 9/1/07 | 6/30/08 | Freshman Class Advisor | 1 | 1,543.00 |
| | Sotero, Lindsay | Teacher | Villa Park HS/Howard | Stipend | 1,500.00 | 11/1/07 | 2/29/08 | VA Girls' Basketbl/BPD | 1 | 1,500.00 |
| | | | | | | | | | | |
| | Extra Pay Department Chairperson | | | | | | | | | |
| | | | | | | | | | | |
| | Koester, Abby | Teacher | McPherson MS/Bentley | stipend | 1,872.00 | | | Special Education | 1 | 1,872.00 |

Staff Responsibility:
Ed Kissee, Assistant Superintendent-Human Resources

CLASSIFIED AND CERTIFICATED PERSONNEL REPORT
CERTIFICATED PERSONNEL

| | Name | Position | Administrative Unit | Eff. From | Date To | Comments |
|----|--|------------------|------------------------|-----------|---------|--------------|
| | CONVERSION TEMPORARY TO PROBATIONARY STATUS | | | | | |
| 1 | Ayala, Vincent | Teacher | Canyon HS/Bowden | 2007-2008 | | Probationary |
| 2 | Bates, Kristine | Teacher | Portola/Thompson | 2007-2008 | | Probationary |
| 3 | Bledsoe, Mikki | Teacher | SpEd/Rohlander | 2007-2008 | | Probationary |
| 4 | Diekmann, Jennifer | Teacher | Villa Park HS/Howard | 2007-2008 | | Probationary |
| 5 | Felipe, Ken | Teacher | Portola/Thompson | 2007-2008 | | Probationary |
| 6 | Gross, Amy | Teacher | Portola/Thompson | 2007-2008 | | Probationary |
| 7 | Higle, Kathryn | Speech Therapist | SpEd/Rohlander | 2007-2008 | | Probationary |
| 8 | Kasamatsu, Tricia | Teacher | El Modena HS/Briquelet | 2007-2008 | | Probationary |
| 9 | McLendon, Amy | Teacher | Parkside/Rohlander | 2007-2008 | | Probationary |
| 10 | McMillen, Molly | Teacher | Esplanade/Rohlander | 2007-2008 | | Probationary |
| 11 | Meyer, Tad | Teacher | Comm Day Sch/Brown | 2007-2008 | | Probationary |
| 12 | Moore, Michelle | Teacher | Portola/Thompson | 2007-2008 | | Probationary |
| 13 | Ned, Cora | Speech Therapist | SpEd/Rohlander | 2007-2008 | | Probationary |
| 14 | Perez, Rudy | Teacher | Canyon HS/Bowden | 2007-2008 | | Probationary |
| 15 | Ponce, Nancy | Teacher | Parkside/Rohlander | 2007-2008 | | Probationary |
| 16 | Tippets, Bree | Teacher | Cambridge/Rohlander | 2007-2008 | | Probationary |
| 17 | Uriostegui, Arturo | Teacher | Orange HS/Rohlander | 2007-2008 | | Probationary |
| 18 | Valenti, Druex | Teacher | Canyon HS/Bowden | 2007-2008 | | Probationary |
| 19 | Vargas, Susan | Teacher | Orange HS/Johnson | 2007-2008 | | Probationary |
| 20 | Woods, Dale | Teacher | Portola/Thompson | 2007-2008 | | Probationary |

CLASSIFIED AND CERTIFICATED PERSONNEL REPORT
CLASSIFIED PERSONNEL

| Name | Position | Administrative Unit | Range/Step | Rate | Eff. From | Eff. To | Comments |
|----------------------------------|---|--|------------|----------|------------|-----------|---------------------------------|
| EMPLOYMENT | | | | | | | |
| Hourly | | | | | | | |
| Brooks, Kelly | Inst. Asst.-SDC/ Canyon Hills TMR | Special Education/ Rohlander | 28/1 (53) | \$ 14.09 | 12/3/2007 | | Replacement for A. Muyot |
| Buhre, Brandon | Child Care Aide/ Running Springs ES | Child Development Center/ Stephens | 14/1 (53) | \$ 9.98 | 11/13/2007 | | Replacement for T. Moore |
| Cabotaje, Kim | Inst. Asst.-Science Materials/ Crescent Intermediate | Science Center/ Stoterau | 24/1 (53) | \$ 12.75 | 11/26/2007 | | New position |
| Gallegos, Maria | Inst. Asst.-Pre K/ Riverdale ES | Special Education/ Rohlander | 26/1 (53) | \$ 13.39 | 11/29/2007 | | Replacement for R. Buendia |
| Garcia, Alexis | Inst. Asst.-Pre K/ Fairhaven ES | Special Education/ Rohlander | 26/1 (53) | \$ 13.39 | 12/6/2007 | | Replacement for P. Mullally |
| Hernandez, Silvia | Bus Driver/ Transportation | Transportation/ McDonald | 34/1 (51) | \$ 15.56 | 11/15/2007 | | Replacement for M. Zavaleta |
| Lopez, Maria | Food Service Assistant/ Villa Park HS | Nutrition Services/ Pollock | 19/1 (53) | \$ 11.25 | 10/11/2007 | | Replacement for D. Hollister |
| Magana, Miguel | Inst. Asst.-SDC/ Villa Park HS | Special Education/ Rohlander | 26/1 (53) | \$ 13.39 | 11/10/2007 | | New position |
| Perez Aceves, Antonio | Custodian/ Running Springs ES | Maintenance & Operations/ Torres | 31/1 (53) | \$ 15.69 | 12/21/2007 | | Replacement for J. Narez |
| Pioch, Kari | Inst. Asst.-RSP/ Canyon HS | Special Education/ Rohlander | 26/1 (53) | \$ 13.39 | 12/10/2007 | | Replacement for E. Rodriguez |
| Quinonez, Erika | Child Care Aide/ Iteinerant | School Age Care/ Stephens | 14/1 (53) | \$ 9.98 | 12/11/2007 | | Replacement for S. Ontiveros |
| SHORT TERM EMPLOYMENT | | | | | | | |
| Courtney, Traci | Consulting/ Villa Park ES | Villa Park ES/ Hausner | Per Hour | \$ 20.00 | 10/1/2007 | 6/10/2008 | Not to Exceed \$4,000.00 |
| Bittner, Shawn | P.E. Aide/ Nohl Canyon ES | Nohl Canyon ES/ Parker | Per Hour | \$ 20.00 | 11/26/2007 | 6/11/2008 | Not to Exceed \$6,000.00 |
| Dela Llana, Christopher | Fire Science Aide/ Regional Occupational | Regional Occupational Program/ Synder | Per Hour | \$ 11.00 | 9/4/2007 | 1/25/2008 | Not to Exceed \$1,650.00 |
| Ehlert, Jennifer | Consulting/ Villa Park ES | Villa Park ES/ Hausner | Per Hour | \$ 20.00 | 10/15/2007 | 6/10/2008 | Not to Exceed \$4,000.00 |
| Pedroza, Carmen | Cal Works Project/ Child Welfare & Attendance | Child Welfare & Attendance/ Boehler | Per Hour | \$ 20.43 | 1/7/2008 | 3/31/2008 | Not to Exceed \$2,451.60 |

Staff Responsibility: Ed Kissee
Assistant Superintendent - Human Resources

CLASSIFIED AND CERTIFICATED PERSONNEL REPORT
CLASSIFIED PERSONNEL

| Name | Position | Administrative Unit | Range/Step | Rate | Eff. From | Eff. To | Comments |
|--|---|--|------------|----------|------------|-----------|--------------------------|
| SHORT TERM EMPLOYMENT - Continued | | | | | | | |
| Polcari, Jeffrey | Fire Science Aide/ Regional Occupational | Regional Occupational Program/ Synder | Per Hour | \$ 11.00 | 9/5/2007 | 1/25/2008 | Not to Exceed \$1,650.00 |
| Romo, Theresa | Career Advisor/ Regional Occupational | Regional Occupational Program/ Synder | Per Hour | \$ 30.00 | 9/1/2007 | 1/25/2008 | Not to Exceed \$7,500.00 |
| Salio, Elizabeth | Consulting/ Villa Park ES | Villa Park ES/ Hausner | Per Hour | \$ 20.00 | 10/15/2007 | 6/10/2008 | Not to Exceed \$4,000.00 |
| Sarabia, Jessica | Tutor/ Special Programs | Special Programs/ Henry | Per Hour | \$ 13.00 | 11/27/2007 | 6/5/2008 | Not to Exceed \$650.00 |
| Wang, Kevin | Tutor/ Special Programs | Special Programs/ Henry | Per Hour | \$ 13.00 | 11/27/2007 | 6/5/2008 | Not to Exceed \$650.00 |
| Warren, Deborah | Design Consultant/ Canyon HS | Canyon HS/ Bowden | Per Hour | \$ 25.00 | 1/7/2008 | 6/12/2008 | Not to Exceed \$1,000.00 |
| Winslow, Melinda | P.E. Aide/ Running Springs ES | Running Springs ES/ Roach | Per Hour | \$ 15.00 | 9/24/2007 | 6/13/2008 | Not to Exceed \$8,700.00 |
| | | | | | | | |

Staff Responsibility: Ed Kissee
Assistant Superintendent - Human Resources

CLASSIFIED AND CERTIFICATED PERSONNEL REPORT
CLASSIFIED PERSONNEL

| Name | From | To | Eff. From | Date To | Comments |
|--------------------------|----------------------------------|---------------------------------|------------|---------|------------------------------------|
| EMPLOYMENT CHANGE | | | | | |
| Hourly | | | | | |
| Delgado, Gabina | Cook/Baker | Snack Shop Manager | 1/7/2008 | | Promotion, replacing C. Lee |
| | Orange HS | Orange HS | | | |
| | 25/6 (51) + 2% | 27/6 (51) + 2% | | | |
| | 9.5 mos/8 hrs | 9.5 mos/8 hrs | | | |
| Ramaekers, Jennifer | Instructional Assistant, Sp. Ed | Behavior Support Assistant, Sp. | 12/4/2007 | | Promotion, new position |
| | Serrano ES | District Office | | | |
| | 26/6 (51) | 35/3 (51) | | | |
| | 9.5 mos/6.5 hrs | 9.5 mos/6.5 hrs | | | |
| Monthly | | | | | |
| Ade, Virginia | Administrative Secretary | Executive Secretary I | 12/3/2007 | | Promotion, replacing S. Schweitzer |
| | Construction | Facilities & Planning | | | |
| | 39/6 (58) + 10% | 31/2 (84) + 10% | | | |
| | 12 mos/8 hrs | 12 mos/8 hrs | | | |
| Aldana, Ofelia | Senior Staff/School Clerk | Senior Account Clerk | 1/14/2008 | | Promotion, replacing L. Proctor |
| | El Modena HS | Transportation | | | |
| | 32/6 (50) | 33/6 (50) | | | |
| | 10 mos/8 hrs | 12 mos/8 hrs | | | |
| Hokenson, Stacie | Attendance/Health Clerk | Senior Staff/School Clerk | 1/7/2008 | | Promotion, replacing S. Winters |
| | Fairhaven ES | El Modena HS | | | |
| | 31/3 (53) | 32/5 (50) | | | |
| | 10 mos/3.5 hrs | 10 mos/8 hrs | | | |
| McCormick II, Merrill | Head Custodian | Senior Maintenance Worker | 1/14/2008 | | Reinstatement from layoff |
| | Canyon Rim ES | Maintenance & Operations | | | |
| | 33/6 (50) +2% | 39/6 (50) + 2% | | | |
| | 12 mos/8 hrs | 12 mos/8 hrs | | | |
| Morales, Andy | Swim Pool Maintenance Technician | Plumber | 12/17/2007 | | Promotion, replacing S. Coutts |
| | Maintenance & Operations | Maintenance & Operations | | | |
| | 40/6 (58) + 5% | 46/5 (58) + 5% | | | |
| | 12 mos/8 hrs | 12 mos/8 hrs | | | |
| Peters, Kathryn | Senior Staff/School Clerk | School Office Manager | 12/10/2007 | | Promotion, replacing L. Jeantet |
| | Canyon HS | Running Springs ES | | | |
| | 32/6 (50) | 37/5 (50) | | | |
| | 10 mos/8 hrs | 10 mos/8 hrs | | | |

Staff Responsibility: Ed Kissee
Assistant Superintendent - Human Resources

CLASSIFIED AND CERTIFICATED PERSONNEL REPORT
CLASSIFIED PERSONNEL

| Name | From | To | Eff. From | Date To | Comments |
|----------------------------|---------------------------|----------------------------------|------------|---------|----------------------------------|
| Monthly - Continued | | | | | |
| Poole, Tracy | HSAP Secretary | ASB Bookkeeper | 12/5/2007 | | Promotion, replacing C. Trujillo |
| | Orange HS | Orange HS | | | |
| | 33/2 (50) | 35/2 (50) | | | |
| | 11 mos/8 hrs | 11 mos/8 hrs | | | |
| Sadler, Danny | Senior Maintenance Worker | Maintenance Specialist/Carpenter | 12/17/2007 | | Promotion, new position |
| | Maintenance & Operations | Maintenance & Operations | | | |
| | 39/6 (50) | 43/5 (50) | | | |
| | 12 mos/8 hrs | 12 mos/8 hrs | | | |
| | | | | | |

Staff Responsibility: Ed Kissee
Assistant Superintendent - Human Resources

CLASSIFIED AND CERTIFICATED PERSONNEL REPORT
CLASSIFIED PERSONNEL

| Name | Position | Administrative Unit | Schedule/ Step/Column | Rate | Eff. From | Date To | Comments |
|--------------------|-------------------------|--------------------------|--------------------------|------|------------|---------|-----------------|
| SEPARATIONS | | | | | | | |
| Ackerman, Janette | Instructional Assistant | Special Education | | | 11/16/2007 | | Dismissal |
| Bierer, Kristyn | Instructional Assistant | Special Education | | | 11/30/2007 | | Resignation |
| Garcia, Oscar | Bus Driver | Transportation | | | 10/12/2007 | | Retirement |
| Kelley, James | Gardener/Groundskeeper | Maintenance & Operations | | | 1/31/2008 | | Retirement |
| Knox, Marjorie | Career Guidance | Richland HS | | | 1/29/2007 | | 39 Month Rehire |
| Lee, Cindy | Snack Shop Manager | Nutrition Services | | | 12/21/2007 | | Retirement |
| Monroy, Luz | Technology Assistant | Lampson ES | | | 12/21/2007 | | Resignation |
| Mullally, Peter | Instructional Assistant | Special Education | | | 11/27/2007 | | Resignation |
| Tapia, Lizbeth | CBET Aide II | Esplanade ES | | | 12/20/2007 | | Resignation |
| Vigil, Justine | Instructional Assistant | Special Education | | | 1/8/2008 | | Resignation |
| Villanueva, Rafael | Custodian | La Veta ES | | | 12/11/2007 | | Resignation |
| Vincent, Troy | Custodian | Maintenance & Operations | | | 12/13/2007 | | Dismissal |
| | | | | | | | |

Staff Responsibility: Ed Kissee
Assistant Superintendent - Human Resources

CLASSIFIED AND CERTIFICATED PERSONNEL REPORT
CLASSIFIED PERSONNEL

| Name | Position | Administrative Unit | Schedule/ Step/ Column | Rate | Eff. From | Date To | Comments | # of Units | Salary |
|--------------------|--|-----------------------|------------------------|----------|-----------|----------|--------------------------|------------|----------|
| | | | | | | | | | |
| | EXTRA PAY PROJECT-COACHING STIPENDS | | | | | | | | |
| | | | | | | | | | |
| Giannetti, Adrian | Walk-On Coach | Canyon HS/Bowden | Stipend | 1,800.00 | 11/1/07 | 2/29/08 | Boys' Soccer/BPD | 1 | 1,800.00 |
| Higgins, Randy | Walk-On Coach | Canyon HS/Bowden | Stipend | 50.00 | 11/1/07 | 2/29/08 | Boys' Wrestling | 1 | 50.00 |
| Rodgers, Kelsey | Walk-On Coach | Canyon HS/Bowden | Stipend | 2,100.00 | 11/1/07 | 2/29/08 | F/S Girls' WterPolo/BPD | 1 | 2,100.00 |
| Beam, Andy | Walk-On Coach | Canyon HS/Bowden | Stipend | 2,349.00 | 11/1/07 | 2/29/08 | VA Boys' Wrestling | 1 | 2,349.00 |
| Petrosian, Ara | Walk-On Coach | Canyon HS/Bowden | Stipend | 2,162.00 | 11/1/07 | 2/29/08 | F/S Boys' Baseball | 1 | 2,162.00 |
| Coyne, Steve | Walk-On Coach | Canyon HS/Bowden | Stipend | 2,631.00 | 11/1/07 | 2/29/08 | JV Boys' Basketball | 1 | 2,631.00 |
| Barnhart, Bryan | Walk-On Coach | El Modena HS/Briquele | Stipend | 1,800.00 | 11/1/07 | 2/29/08 | JV Girls' Volleyball/BPD | 1 | 1,800.00 |
| Shandra, John | Walk-On Coach | Orange HS/Johnson | Stipend | 3,032.00 | 10/1/07 | 6/30/08 | Drill Team | 1 | 3,032.00 |
| Hernandez, Houston | Walk-On Coach | Villa Park HS/Howard | Stipend | 2,000.00 | 2/1/08 | 5/31/08 | VA Boys' Baseball/BPD | 1 | 2,000.00 |
| Hernandez, Houston | Walk-On Coach | Villa Park HS/Howard | Stipend | 500.00 | 9/3/07 | 11/30/07 | Boys' Baseball/BPD | 1 | 500.00 |
| Garcia, Nick | Walk-On Coach | Villa Park HS/Howard | Stipend | 500.00 | 9/3/07 | 11/30/07 | Boys' Baseball/BPD | 1 | 500.00 |
| Flores, Brian | Walk-On Coach | Villa Park HS/Howard | Stipend | 400.00 | 9/3/07 | 11/30/07 | Boys' Baseball/BPD | 1 | 400.00 |
| Rios, Ray | Walk-On Coach | Villa Park HS/Howard | Stipend | 400.00 | 9/3/07 | 11/30/07 | Boys' Baseball/BPD | 1 | 400.00 |
| Candlish, Matthew | Walk-On Coach | Villa Park HS/Howard | Stipend | 2,000.00 | 2/1/08 | 5/31/08 | F/SA Boys' Baseball/BPD | 1 | 2,000.00 |
| Flores, Brian | Walk-On Coach | Villa Park HS/Howard | Stipend | 2,000.00 | 2/1/08 | 5/31/08 | J/VA Boys' Baseball/BPD | 1 | 2,000.00 |
| Lee, Michael | Walk-On Coach | Villa Park HS/Howard | Stipend | 1,000.00 | 1/7/08 | 4/11/08 | Girls' Tennis/BPD | 1 | 1,000.00 |
| Danna, Derrek | Walk-On Coach | Villa Park HS/Howard | Stipend | 2,256.00 | 11/1/07 | 2/29/08 | VA Girls' WaterPolo | 1 | 2,256.00 |
| Mitchell, Paden | Walk-On Coach | Villa Park HS/Howard | Stipend | 2,364.00 | 11/1/07 | 2/29/08 | F/S Girls' WaterPolo | 1 | 2,364.00 |
| Ramirez, Mario | Walk-On Coach | Villa Park HS/Howard | Stipend | 3,032.00 | 9/1/07 | 6/30/08 | B & G Drill Team Dir. | 1 | 3,032.00 |
| Torres, Jonathan | Walk-On Coach | Villa Park HS/Howard | Stipend | 2,500.00 | 11/1/07 | 2/29/08 | VA Girls' Basketball/BPD | 1 | 2,500.00 |
| Dawson, Laura | Walk-On Coach | Villa Park HS/Howard | Stipend | 2,000.00 | 11/1/07 | 2/29/08 | VA Girls' Basketball/BPD | 1 | 2,000.00 |

Staff Responsibility: Ed Kisse, Assistant Superintendent, Human Resources

| | |
|-----------------|---|
| TOPIC: | STUDENT TEACHER ASSIGNMENTS/AGREEMENTS |
| DESCRIPTION: | <p>It has long been the policy of the Orange Unified School District to cooperate with neighboring colleges/universities in assisting with teacher-training programs to provide educational fieldwork experiences in our schools for student teachers.</p> <p>These experiences are under the direct supervision and instruction of certificated employees of the District for a period not to exceed one semester. The college/university is responsible to direct, supervise and evaluate the performance of the student teacher cooperatively with District employees.</p> |
| FISCAL IMPACT: | This item has no fiscal impact. |
| RECOMMENDATION: | It is recommended that the Board of Education approve the attached student teaching assignment lists. |

CLASSIFIED AND CERTIFICATED PERSONNEL REPORT
CERTIFICATED PERSONNEL

| School | Student Teacher | Assignment | Begin Date | End Date | Master Teacher | University | Units |
|-----------------------------------|---------------------|-------------|------------|----------|------------------|----------------|-------|
| STUDENT TEACHER PLACEMENTS | | | | | | | |
| Taft | Calvillo, Puanani | Kdg. | 1/28/08 | 3/21/08 | Sandy Taft | Biola | 5.0 |
| Taft | Bond, Jennifer | 2nd Grade | 1/7/08 | 4/18/08 | Marcie Matsuoka | CalState TEACH | 5.0 |
| McPherson | Berger, Jennifer | 2nd Grade | 1/28/08 | 5/9/08 | Paula Roach | Chapman | 5.0 |
| McPherson | Longo, Candice | 3rd Grade | 1/28/08 | 5/9/08 | Sally Johnson | Chapman | 5.0 |
| McPherson | Valdez, Vidal | 4th Grade | 1/28/08 | 5/9/08 | Bonnie Morse | Chapman | 5.0 |
| Cambridge | Sanchez, Norma | 2nd Grade | 1/25/08 | 5/9/08 | Patricia Houston | CSUF | 5.0 |
| Cambridge | Haro, Alma | 2nd Grade | 1/25/08 | 5/9/08 | Genie Ronie | CSUF | 5.0 |
| Cambridge | Gulickson, Shannon | 1/2 Combo | 1/25/08 | 5/9/08 | Jane Medina | CSUF | 5.0 |
| McPherson | Bawden, Amy | 6th Grade | 1/25/08 | 5/9/08 | Judy Denney | CSUF | 5.0 |
| McPherson | Levy, Melanie | 3rd Grade | 1/25/08 | 5/9/08 | Lauren Ficaro | CSUF | 5.0 |
| McPherson | Jimenez, Grisel | 1st Grade | 1/25/08 | 5/9/08 | Lauren Karg | CSUF | 5.0 |
| El Modena HS | Mills, Jessica | English | 1/28/08 | 6/13/08 | Jason Moeller | CSULB | 10.0 |
| El Modena HS | Mills, Jessica | English | 1/28/08 | 6/13/08 | Molly Chertock | CSULB | 10.0 |
| La Veta | Phenicie, Aimee | 3rd Grade | 3/24/08 | 5/16/08 | Nancy Bower | CSULB | 5.0 |
| Panorama | Stevenson, Robert | K/1 Combo | 3/24/08 | 5/16/08 | Diane Bennett | CSULB | 5.0 |
| Panorama | Ingram, Amber | 2nd Grade | 1/28/08 | 3/21/08 | Ginger Silverman | CSULB | 5.0 |
| Silverado | Ingram, Amber | 5/6th Combo | 3/24/08 | 5/16/08 | Cass Clagg | CSULB | 5.0 |
| Sycamore | Phenicie, Aimee | 2nd Grade | 1/28/08 | 3/21/08 | Tami Himes | CSULB | 5.0 |
| Sycamore | Scheid, Amanda | Kdg. | 1/28/08 | 3/21/08 | Tiny Bender | CSULB | 5.0 |
| Lampson | Monroy, Luz | 4th Grade | 2/4/08 | 3/21/08 | Eva Savela | National | 5.0 |
| Lampson | Monroy, Luz | 1st Grade | 3/24/08 | 5/30/08 | Sarah Roth | National | 5.0 |
| Panorama | Crum, Elizabeth | 1st Grade | 4/14/08 | 6/13/08 | Laura Oliver | National | 5.0 |
| Panorama | Mattis, Kimberly | Kdg. | 2/4/08 | 4/11/08 | Susan Mayville | National | 5.0 |
| Panorama | Wojtkiewicz, Amanda | 1st Grade | 2/4/08 | 4/11/08 | Janet Surman | National | 5.0 |
| Panorama | Wojtkiewicz, Amanda | 6th Grade | 4/14/08 | 6/13/08 | Richard Ireland | National | 5.0 |
| Silverado | Crum, Elizabeth | 3/4th Combo | 2/4/08 | 4/11/08 | Celeste Ivory | National | 5.0 |
| Lampson | Van Gessel, Denise | 5th Grade | 3/3/08 | 5/9/08 | Robert Rosselli | Vanguard | 5.0 |
| Sycamore | Alvaraz, Chalishia | 6th Grade | 3/3/08 | 5/9/08 | Paul Flores | Vanguard | 5.0 |

Staff Responsibility: Ed Kissee
Assistant Superintendent, Human Resources

| | |
|-----------------|--|
| TOPIC: | STRS POST- RETIREMENT REQUEST FOR RETIRED ADMINISTRATOR |
| DESCRIPTION: | In order to employ a person who has retired under STRS in an administrative position for an extended period of time, it is necessary to request an exemption from the STRS Post-Retirement Earnings Limitation. This exemption is authorized by Education Code Section 24216 when a qualified individual is needed to perform creditable service in an emergency situation to fill a vacant administrative position requiring highly specialized skills when a vacancy occurs due to circumstances beyond the control of the employer. |
| FISCAL IMPACT: | This item has no fiscal impact. |
| RECOMMENDATION: | It is recommended that the Board of Education authorize staff to submit a STRS Post-Retirement Earnings Limitation Exemption request for James McMillen in order to allow him to serve as a Senior High School Assistant Principal during the 2007-2008 school year. |

TOPIC: **CONTRACT SERVICES REPORT – EDUCATIONAL SERVICES**

DESCRIPTION: The following is a report of contract service items for Educational Services.

TERRY SHANAHAN Terry Shanahan, Ed.D., Director of the California Science Center Project, will provide staff development for science teacher leaders at two after-school workshops on January, 24, and May 22, 2008. Beckman Science Grant not-to-exceed \$500
01.00-9507-0-5850-1110-2140-601-601-000 (Morga/Stoterau)

SCHOOL SERVICES OF CALIFORNIA, INC. School Services of California, Inc. will provide “Building a Better Budget – Making Categoricals Work” workshop for District principals and administrators on Friday, February 29, 2008. The workshop will focus on how to make the most of new and existing resources to improve student performance, with special focus on implementing the Essential Program Components. Fiscal impact will be the expenditure of restricted categorical fund monies.
Title I/SLIP not-to-exceed \$4,500
01.00-3010-8-5850-1110-2110-604-604-000 \$2,250
01.00-7395-0-5850-1110-2110-604-604-000 \$2,250 (Truex)

ORANGE COUNTY PERFORMING ARTS CENTER The Orange County Performing Arts Center's Arts Teach Program will provide two programs for the 6th and 2nd grade students of Running Springs Elementary on January 30, 2008 and March 19, 2008 respectfully. *Will and Company* will provide an assembly for the 6th grade entitled, “Homer’s Odyssey.” The 2nd grade program is entitled, “Icky Yucky Gross Bug Show.” These programs meet and support State Standards for 2nd and 6th grade curriculum.
Funded by Running Springs PTA not-to-exceed \$1,150
Elementary Education Morga/Roach

CALIFORNIA WEEKLY EXPLORER The California Weekly Explorer will provide an assembly for 5th grade students of Running Springs Elementary on January 23 & 24, 2008. The assembly titled, “Walk Through the American Revolution,” meets State Standards and supports 5th grade curriculum.
Funded by Running Springs PTA not-to-exceed \$1,270
Elementary Education Morga/Roach

**POSITIVE BEHAVIOR
INTERVENTIONS AND
SUPPORT (PBIS)**

Olive and Riverdale Elementary Schools will participate in the Positive Behavior Intervention and Support (PBIS) program training as first year schools, during the 2007-08 school year. This program is currently being used in 5300 school districts nationwide. This research-based practice provides proof that school environments that are positive, preventative, predictable, relevant and effective are not only safer, healthier and more caring, but also provide enhanced learning and teaching outcomes.

General Fund/ Elementary Conference. . .not-to-exceed . . . \$5,400
01.00-0000-0-5220-9113-7410-201-201-000 Morga/Smith/McFadden

:

SCIENCE ON THE GO

Science on the Go will present an assembly to the kindergarten students of Running Springs on May 7, 2008. The assembly entitled "Insects," meets and supports State Standards for kindergarten curriculum.

Funded by Running Springs PTA . . . not-to-exceed \$ 225
Elementary Education Morga/Roach

FISCAL IMPACT:

\$13,045

RECOMMENDATION:

It is recommended that the Board of Education approve the Contract Services Report - Educational Services and authorize the Superintendent or designee to execute the contracts.

TOPIC: **STUDY TRIPS**

DESCRIPTION: Orange High School – Spanish Club/Camp – Big Bear Lake, CA – April 18 – 20, 2008

Orange High School Spanish Club under the direction of teachers, Tracey Awwad and Scott Peterson, will travel to Big Bear Lake to participate in the Foreign Language Camp. This camp will focus on full immersion in the target language of Spanish and also extend foreign language skills to activities not available in a regular classroom setting. The fifteen female and five male students will be accompanied by one female and one male adult chaperone plus additional adult supervision during the camp. The students/chaperones will travel by chartered bus provided by Silver State Coach and will be housed at the Presbyterian Conference Center in Big Bear. The cost per person is \$140 and scholarships are available. The students will miss a partial day. A substitute will be required. The cost for the teacher and the substitute will be funded from categorical funds.

Orange High School – Nutrition “Lunch Bunch” Sacramento, CA – January 23, 2008

Orange High School Nutrition “Lunch Bunch” under the direction of advisor, Patti Maize, will travel to Sacramento to participate in a network for a Healthy California Conference, “Champions for Change: Taking Action for Healthy Eating and Living”. The students will be presenters at the conference to share experiences with other schools on how to put together a youth empowerment program at their school sites. The seven female and one male student will be accompanied by two female adult chaperones. Students and chaperones will travel by air from John Wayne Airport and complete the trip in one day. There is no cost to the students as all expenses are covered by the Network for Healthy California Grant monies. The students will miss one day of school and a substitute will not be required.

Orange High School – Girl's Varsity Water Polo Team – San Diego, CA – January 31 – February 3, 2008

Orange High School Girl's Varsity Water Polo Team will travel to San Diego to participate in the San Diego Open Water Polo Tournament hosted by El Capitan and Granite Hills High Schools. Originally approved at the October 11th Board meeting, this study trip was cancelled due to the California wild fires. This is a rescheduled date for the tournament. The ten female student/athletes will be accompanied by three female adult chaperones. The students and chaperones will be staying at the Days Inn El Cajon. Transportation is provided by parents and any parent driving a student other than their own will have an OUSD driving permit on file prior to this trip. The cost per student is \$130 and scholarships are available. Students will miss one day of school and a substitute will be required. The substitute cost will be reimbursed from Orange High School ASB

| | |
|-----------------|---|
| FISCAL IMPACT: | Receipt of restricted categorical fund monies and unrestricted donated funds. |
| RECOMMENDATION: | It is recommended that the Board of Education approve these study trips as presented. |

| | |
|-----------------|---|
| TOPIC: | ORANGE UNIFIED SCHOOL DISTRICT HOME SCHOOL PROGRAM |
| DESCRIPTION: | The California Department of Education requires that the governing board of a school district approve establishing a Home School Program. This approval is a step in the process of implementing a Home School within Orange Unified School District. The Home School will serve those students whose parents choose to teach their students at home. |
| FISCAL IMPACT: | The Home School Program is supported by base revenue funding. |
| RECOMMENDATION: | It is recommended that the Board of Education approve establishing a Home School Program. |

| | |
|-----------------|--|
| TOPIC: | RESOLUTION NO. 19-07-08 - ALLOCATION OF THE ARTS AND MUSIC BLOCK GRANT AWARD |
| DESCRIPTION: | <p>Education Code Sections 51210 and 51220 states that the adopted course of study for first through twelfth grades “shall include instruction in visual and performing arts, including dance, music, theatre, and visual arts, aimed at the development of aesthetic appreciation and the skills of creative expression.”</p> <p>The California Department of Education has established a framework and content standards in arts education, <i>Visual and Performing Arts Framework for California Public School – Kindergarten through Grade 12</i>.</p> <p>The Arts and Music Block Grant will provide ongoing funding for staff, materials, books, supplies, and equipment, and implementing or increasing staff development opportunities as necessary to support standards-aligned arts and music instruction.</p> <p>The Orange Unified School District has collaborated with the Orange County Department of Education and teachers, students, parents, and community members to participate in the Arts Advantage Program to implement a strategic plan for systematic improvement of arts and music education.</p> <p>The District will provide a summary report to the California Department of Education of how these funds were expended or are proposed to be expended, and the number of students and grade levels served.</p> |
| FISCAL IMPACT: | Receipt of categorical grant funding in the amount of \$478,321 to partially support providing a standards based vocal and instrumental music instruction program to elementary school students in fifth and sixth grades. |
| RECOMMENDATION: | It is recommended that the Board of Education adopt Resolution No. 19-07-08, Allocation of the Arts and Music Block Grant Award. |

RESOLUTION NO. 19-07-08
of the
BOARD OF EDUCATION
of the
ORANGE UNIFIED SCHOOL DISTRICT

ALLOCATING ARTS AND MUSIC BLOCK GRANT AWARD

WHEREAS, Education Code Sections 51210 and 51220 states that the adopted course of study for grades 1 to 12 “shall include instruction in visual and performing arts, including dance, music, theatre, and visual arts, aimed at the development of aesthetic appreciation and the skills of creative expression”; and

WHEREAS, the California Department of Education has established a framework and content standards in arts education, *Visual and Performing Arts Framework for California Public School – Kindergarten through Grade 12*; and

WHEREAS, Congress has affirmed the importance of arts education by establishing a dedicated arts education program at the U.S. Department of Education to complement existing programs of the National Endowment of the Arts; and

WHEREAS, recent studies have shown that student engagement in the arts nurtures the development of cognitive, social and personal competencies; arts experiences enhance critical thinking abilities and outcomes; and the arts enable educators to reach students in effective ways; and

WHEREAS, the Arts and Music Block Grant will provide ongoing funding for staff, materials, books, supplies, and equipment, and implementing or increasing staff development opportunities as necessary to support standards-aligned arts and music instruction; and

WHEREAS, the Orange Unified School District has collaborated with the Orange County Department of Education and teachers, students, parents, and community members to participate in the Arts Advantage Program to implement a strategic plan for systematic improvement of arts and music education; and

WHEREAS, the Orange Unified School District has provided a copy of this Resolution and information about the use of these funds to school site councils, school wide advisory and school support groups and the time and date of the public meeting of the Board of Education; and

WHEREAS, by February 2, 2008, the District will provide a summary report to the California Department of Education of how these funds were expended or are proposed to be expended, and the number of students and grade levels served.

NOW, THEREFORE, BE IT RESOLVED that the Orange Unified School District will appropriate the \$478,321.00 received from the Arts and Music Block Grant to partially support providing a standards based vocal and instrumental music instruction program to elementary school students in fifth and sixth grades by employing credentialed music teachers.

PASSED AND ADOPTED THIS 17th day of January, 2008, by the Governing Board of the Orange Unified School District of, Orange County, California.

AYES: _____
NOES: _____
ABSENT: _____
ABSTAIN: _____

Kimberlee Nichols
Clerk of the Board of Education
Orange Unified School District

TOPIC: **APPROVAL OF E-RATE TELECOMMUNICATIONS CONTRACTS - FUNDING YEAR 11: JULY 1, 2008 – JUNE 30, 2009**

DESCRIPTION: In accordance with the federally funded E-rate program, an application will be submitted for telephone services.

Telephone Services

AT&T will continue to provide telecommunications services based on a new District contract for local and long distance services. It is anticipated that the District will benefit from a reduction of up to \$420,000 in telephone billing costs for the 2008-09 fiscal year.

Cellular Services

AT&T will provide cellular services for the District. It is anticipated that the District will benefit from a reduction of up to \$30,000 in cellular billing costs for the 2008-09 fiscal year.

FISCAL IMPACT: Cost savings of up to \$450,000.

RECOMMENDATION: It is recommended that the Board of Education approve the use of the E-rate telecommunications contracts.

TOPIC: APPROVAL OF THE CALNET 2 CONTRACT FOR TELECOMMUNICATION SERVICES FOR E-RATE FUNDING YEAR 11: JULY 1, 2008 – JUNE 30, 2009

DESCRIPTION: In accordance with the federally funded E-rate program, an application will be submitted for telephone services which include all voice and data lines and associated services within the District. In 1999, the District entered into a CALNET contract with AT&T/Pacific Bell. Subsequently, this contract has been utilized to obtain E-Rate reductions of telephone costs of up to \$420,000 each year. The existing CALNET contract expires in December 2008, which falls in the middle of E-Rate Year 11.

In order to receive E-rate Funding for Year 11, the District utilized the initial E-Rate Form 470 process to obtain a new telecommunications contract. The District received one contract offer from the current telecommunications provider, AT&T. AT&T has been awarded the State of California CALNET 2 contract for a term of five years. District staff recommends the approval of the new CALNET 2 contract for a term of five years.

FISCAL IMPACT: No fiscal impact

RECOMMENDATION: It is recommended that the Board of Education approve the CALNET 2 contract with AT&T/Pacific Bell.

| | |
|-----------------|--|
| TOPIC: | CONSOLIDATED APPLICATION PART II 2007-2008 |
| DESCRIPTION: | <p>The District submits the Consolidated Application for Categorical Aid Programs in two parts each year. Part I is submitted in June with the estimated allocations for each state and federal program covered under the Consolidated Application. Part II is submitted in January, following receipt of the final allocation amounts.</p> <p>The attached abstracts briefly describe the programs covered under the Consolidated Application and their allocations for the 2007-08 school year: Title I, Title II, Title III, Title V, Title IV Drug-Free Schools and Communities Program, Tobacco Use Prevention Education Program (TUPE), and Economic Impact Aid.</p> |
| FISCAL IMPACT: | Receipt of categorical fund monies in the amount of \$ 9,564,473 |
| RECOMMENDATION: | It is recommended that the Board of Education approve the submission of the Consolidated Application Part II for the 2007-08 school year to the California State Department of Education. |

ORANGE UNIFIED SCHOOL DISTRICT
State and Federal Consolidated Categorical Aid Programs

ABSTRACTS

2007-2008

Title I

The Title I Program provides funds to school districts and private schools to help close the achievement gap between high and low poverty schools by targeting additional resources based on numbers of poor school-age children.

Provisions promote extending learning time in accelerated rather than remedial classes; expanding eligibility for schools to operate school-wide programs that serve all children in high-poverty schools; helping achieve effective transitions from preschool to school and from school to work; establishing accountability based on results, greatly reducing testing, providing staff development to train high quality teachers; and increasing effective parental participation, assuring fair and equitable participation of non-public school students. Title I services will be offered at the following schools: California, Cambridge, Esplanade, Fairhaven, Handy, Jordan, Lampson, Palmyra, Prospect, Sycamore, Taft, West Orange, Portola, Yorba, Orange High, and to eligible non-public school students.

Allocations are based on the number of students receiving free and reduced lunch and the most recent CALWORKS report.

Funding Amount: \$ 4,073,868

Title II, Part A (Teacher Quality)

The Title II Program (formerly Eisenhower and Federal Class Size Reduction) provides grants to LEAs to: 1) increase student academic achievement through strategies such as improving teacher and principal quality, increasing the number of highly qualified teachers in the classrooms and highly qualified principals in the schools; and 2) holds LEAs and schools accountable for improvement in student academic achievement.

Allocations are based on CBEDS enrollment and Title I funding.

Funding Amount: \$ 1,159,608

Title III

The Title III Program is a source of federal funding to be used for improving instruction for all English Learners enrolled in the district. It is part of the President's legislation "No Child Left Behind".

Allocations are based on the number of identified English Learners.

Funding Amount: \$ 613,510

Title IV, Part A (Drug-Free Schools and Communities Program (DFSC))

Title IV, Part A provides funding to develop improvement and evaluate comprehensive drug/alcohol, tobacco, and violence prevention programs and activities which are consistent with the principles of effectiveness and that are coordinated with school and community-based program services. The goal of this program is to foster a safe and drug-free learning environment that supports academic achievement.

Funding Amount: \$ 118,840

State and Federal Consolidated Categorical Aid Programs ABSTRACTS – 2007/2008

Tobacco-Use Prevention Education Program (TUPE)

The TUPE Program provides a comprehensive system of services to reduce the use of tobacco products by youth by helping them make healthful decisions through instruction and knowledge building.

Allocation based on CBEDS enrollment in grades 4-8.

Funding Amount: \$ 38,352

Title V, Innovative Education Strategies

The Title V Program (formerly Title VI) is designed to support local education programs that are consistent with statewide education reform efforts and to provide for innovation and educational improvement to meet the needs of all students including special needs of at-risk students.

Formula allocation based on CBEDS enrollment and CALWORKS ranking.

Funding Amount: \$ 31,823

Economic Impact Aid (EIA)

The EIA/LEP Program provides state supplementary funding to support the development of English language fluency and academic achievement of 6,730 limited English students district wide. The funding also provides for state mandated initial identification and placement testing of English Language Learners, as well as redesignation activities. In addition, staff development is provided for teachers working with students acquiring English.

Richland Continuation High School also receives a portion of the EIA funding for a State Compensatory Education Program (EIA/SCE) for their educationally disadvantaged students. The program requirements and services are comparable to the federal Title I Program.

Allocations are based on the number of identified English Learners.

Funding Amount: \$ 3,528,472

TOPIC: SECOND QUARTER REPORT OF UNIFORM COMPLAINTS FOR THE WILLIAMS CASE SETTLEMENT

DESCRIPTION: As a result of the State of California's settlement of the Williams class action lawsuit, Education Code section 35186 requires school districts to do two things: 1) provide an opportunity to file formal complaints under the District's Uniform Complaint Procedures; and 2) report to the Board of Education and the public four times a year the number of complaints filed and the area of the settlement they target.

The Second Quarter Report covers the number of Uniform Complaints received by the District under the three areas governed by the Williams Case Settlement for the period of October – December 2007. The three targeted areas are:

1. Sufficient instructional materials
2. Emergency or urgent facilities conditions that pose a threat to the health and safety of pupils or staff
3. Teacher vacancy and misassignment

No Uniform Complaints for any area have been reported during the second quarter for the Williams Case Settlement.

FISCAL IMPACT: This item has no fiscal impact.

RECOMMENDATION: It is recommended that the Board of Education receive the Report of Uniform Complaints as mandated by the Williams Case Settlement.

| | |
|------------------------|--|
| TOPIC: | TEXTBOOK ADOPTIONS – FINAL |
| DESCRIPTION: | The attached list of textbooks has been available for review for the 30 days required by the Education Code. |
| FISCAL IMPACT: | <p>Textbooks will be purchased from the textbook accounts during the 2007-08 school year. Auxiliary adoption texts are used to supplement the basic textbook and are purchased with funds other than the state textbook monies.</p> <p>District and State Textbook Account Numbers: 01.00-7156-0-4110-1110-1000-609-609-000, 01.00-7158-0-4210-1110-2420-609-609-000, Other school textbook accounts are used for auxiliary adoptions.</p> |
| RECOMMENDATION: | It is recommended that the Board of Education adopt the attached list of textbooks for the Orange Unified School District. |

Orange Unified School District

TEXTBOOK ADOPTIONS

Board Review – December 13, 2007

Final Approval – January 17, 2008

AUXILIARY ADOPTIONS

| <i>Title</i> | <i>Subject</i> | <i>Grade Level</i> | <i>Publisher</i> | <i>Copyright</i> | <i>ISBN</i> | <i>Funding Source</i> | <i>State Matrix</i> | <i>IMAC</i> |
|---------------------|-----------------------|---------------------------|-------------------------|-------------------------|--------------------|------------------------------|----------------------------|--------------------|
| Chicken Boy | Language Arts | 6-8 | Atheneum | 2005 | 9781416934820 | Non-Textbook Funds | No | 11/5/07 |
| Day of Tears | Language Arts | 6-8 | Hyperion | 2005 | 9780786804900 | Non-Textbook Funds | No | 11/5/07 |
| The Schwa Was Here | Language Arts | 6-8 | Dutton Children's Books | 2004 | 9780142405772 | Non-Textbook Funds | No | 11/5/07 |

TOPIC: **EXPULSION OF STUDENT: CASE NO. 07-08-11**

DESCRIPTION: Violation of California Education Code 48900 (c) and (i)

FISCAL IMPACT: There will be no fiscal impact

RECOMMENDATION: It is recommended that the Board of Education uphold the recommendation for expulsion for two semesters (June 16, 2008).

A hearing panel of administrators met Friday, December 7, 2007, and determined that a recommendation for expulsion be presented to the Board of Education. It was further recommended that the enforcement of the expulsion be conditionally suspended permitting enrollment in a school within the district under the terms and condition of the expulsion.

| | |
|-----------------|---|
| TOPIC: | EXPULSION OF STUDENT: CASE NO. 07-08-15 |
| DESCRIPTION: | Violation of California Education Code 48900(b) and 48900(k) |
| FISCAL IMPACT: | There will be no fiscal impact |
| RECOMMENDATION: | <p>It is recommended that the Board of Education uphold the recommendation for expulsion for two semesters (June 16, 2008).</p> <p>A hearing panel of administrators met Friday, December 7, 2007, and determined that a recommendation for expulsion be presented to the Board of Education. It was further recommended that the enforcement of the expulsion be conditionally suspended permitting enrollment in a school within the District under the terms and condition of the expulsion.</p> |

| | |
|-----------------|--|
| TOPIC: | EXPULSION OF STUDENT: CASE NO. 07-08-16 |
| DESCRIPTION: | Violation of California Education Code 48900(b) and 48900(k) and 48915 (a) (2) |
| FISCAL IMPACT: | There will be no fiscal impact. |
| RECOMMENDATION: | <p>It is recommended that the Board of Education uphold the recommendation for expulsion for two semesters (June 16, 2008).</p> <p>A hearing panel of administrators met Tuesday, December 11, 2007, and determined that a recommendation for expulsion be presented to the Board of Education. It was further recommended that the enforcement of the expulsion be conditionally suspended permitting enrollment in the district's community day school under the terms and condition of the expulsion.</p> |

| | |
|-----------------|---|
| TOPIC: | EXPULSION OF STUDENT: CASE NO. 07-08-18 |
| DESCRIPTION: | Violation of California Education Code 48900(b), (k) (j); and 48900 (a) (2). |
| FISCAL IMPACT: | There will be no fiscal impact |
| RECOMMENDATION: | <p>It is recommended that the Board of Education uphold the recommendation for expulsion for two semesters (June 16, 2008).</p> <p>A hearing panel of administrators met Tuesday, December 11, 2007, and determined that a recommendation for expulsion be presented to the Board of Education. It was further recommended that the enforcement of the expulsion be conditionally suspended permitting enrollment in a school within the District under the terms and condition of the expulsion.</p> |

TOPIC: **EXPULSION OF STUDENT: CASE NO. 07-08-20**

DESCRIPTION: Violation of California Education Code 48900(a) (2), (f), (g) and (k).

FISCAL IMPACT: There will be no fiscal impact.

RECOMMENDATION: It is recommended that the Board of Education uphold the recommendation for expulsion for two semesters (June 16, 2008).

A hearing panel of administrators met on Friday, December 14, 2007. The panel determined that a recommendation for expulsion be presented to the Board of Education. It was further recommended that the enforcement of the expulsion be conditionally suspended permitting the student to enroll in the District's continuation high school under the terms and conditions specified in the expulsion recommendation.

| | |
|--|--|
| TOPIC: | CONTRACT SERVICES REPORT – PUPIL SERVICES |
| DESCRIPTION: | The following is a report of contract service items for Pupil Services. |
| SPECIAL EDUCATION STUDENT #324060 | <p>As the result of an IEP, the District agrees to reimburse parents of a special education student for occupational therapy and speech and language therapy from July 1, 2007, through February 14, 2008, upon presentation of itemized billing statements.</p> <p>Special Education not-to-exceed \$19,560 01-00-6500-0-5850-5770-1190-207-207-000 (Rohlander)</p> |
| SPECIAL EDUCATION STUDENT #255061 | <p>As the result of an IEP, the District agrees to reimburse parents of a special education student for occupational therapy for the 2007/2008 school year, upon presentation of itemized billing statements.</p> <p>Special Education not-to-exceed \$18,525 01-00-6500-0-5850-5770-1190-207-207-000 (Rohlander)</p> |
| FISCAL IMPACT: | \$38,085 |
| RECOMMENDATION: | It is recommended that the Board of Education approve the Contract Services Report- Pupil Services as presented. |

TOPIC: SPECIAL EDUCATION NON-PUBLIC SCHOOLS & DESIGNATED INSTRUCTIONAL SERVICES- 2007-2008

DESCRIPTION: Pursuant to the requirements of California Education Code Section 56365(a) – Non-Public Schools/Agencies (NPS) and Designated Instruction and Services (DIS) – (i.e. speech/language, physical/occupational therapy, orientation mobility training, adaptive physical education) – the Board of Education is authorized to place individuals with exceptional needs in non-public schools/agencies when those pupils cannot be appropriately served within the programs available in the school district.

FISCAL IMPACT: Special Education Funds: \$ 4,300
01.00-6500-0-5870-5750-1180-207-207-000
01.00-6500-0-5871-5770-1190-207-207-000

RECOMMENDATION: It is recommended that the Board of Education authorize non-public school/agency placement for the student identification numbers listed on the attached report, as presented.

**Orange Unified School District
Report of Special Education
Non-Public Schools & Designated Instructional Services 2007-2008**

| I.D. No. | Designated Instruction | Cost | Period Covered |
|-----------------|---|---------------------|-----------------------|
| 352490 | Children's Learning Connection Fountain Valley, California | \$1,130 Addendum | 09/04/07-06/30/08 |
| 352489 | Children's Learning Connection | 1,130 Addendum | 09/04/07-06/30/08 |
| 275867 | So. Calif. College of Optometry Fullerton, California | 2,040 | 11/01/07-06/30/08 |

TOPIC: **RESOLUTION NO. 21-07-08: AUTHORIZATION OF PAYMENT TO TRUSTEE ABSENT FROM REGULAR BOARD MEETING**

DESCRIPTION: On December 13, 2007, Board Member John Ortega was absent from the regular Board meeting due to a death in the family.

The subject of compensation for missed meetings is addressed in Education Code Section 35120(c).

A member may be paid for any meeting when absent if the board by resolution duly adopted and included in its minutes finds that at the time of the meeting he or she is performing services outside the meeting for the school district or districts, he or she was ill or on jury duty, or the absence was due to a hardship deemed acceptable by the board.

FISCAL IMPACT: This item has no fiscal impact.

RECOMMENDATION: It is recommended that the Board of Education adopt Resolution No. 21-07-08 authorizing payment to John Ortega at the regular rate of compensation for the December 13, 2007 Board meeting while Mr. Ortega was absent due to bereavement.

RESOLUTION NO. 21-07-08
of the
BOARD OF EDUCATION
of the
ORANGE UNIFIED SCHOOL DISTRICT

**RESOLUTION AUTHORIZING PAYMENT
TO TRUSTEE ABSENT FROM BOARD MEETING**

WHEREAS, California Education Code Section 35120(c) provides that a member of the Board of Education may be paid for any meeting when absent if the Board, by resolution duly adopted and included in its minutes, finds that at the time of the meeting the member is performing services outside the meeting for the school district, he or she was ill or on jury duty, or the absence was due to a hardship deemed acceptable by the Board.

WHEREAS, on December 13, 2007, the Board of Education held a meeting; and

WHEREAS, Board member John Ortega was unable to be present at the meeting;

and

WHEREAS, the Board has determined that Board member John Ortega was absent due to a death in the family.

NOW, THEREFORE, BE IT RESOLVED that Board member John Ortega shall be paid at the regular rate of compensation for the meeting of the Board of Education held December 13, 2007.

AYES: _____
NOES: _____
ABSENT: _____
ABSTAIN: _____

Date: January 17, 2008

Kimberlee Nichols
Clerk of the Board