

**ORANGE UNIFIED SCHOOL DISTRICT  
BOARD OF EDUCATION • REGULAR MEETING  
DISTRICT EDUCATION CENTER , BLDG. H  
1401 NORTH HANDY STREET • ORANGE, CA**

**THURSDAY • NOVEMBER 16, 2006**

**6:30 P.M. • CLOSED SESSION**

**7:30 P.M. • REGULAR SESSION**

---

---

*Members of the audience are invited to address the Board of Education on agenda items when the Board considers them. Speakers are limited to three (3) minutes, with a maximum of twenty (20) minutes per topic. Persons wishing to address the Board are requested to complete and submit a blue speaker card, available on the information table, before the meeting begins.*

---

---

**A G E N D A**

*(The complete agenda is available online at [www.orangeusd.k12.ca.us/board/calendar.asp](http://www.orangeusd.k12.ca.us/board/calendar.asp))*

1. CALL MEETING TO ORDER - 6:30 P.M.
2. ESTABLISH QUORUM
3. PUBLIC COMMENT ON CLOSED SESSION AGENDA ITEMS
4. ADJOURN TO CLOSED SESSION
  - A. PUBLIC EMPLOYEE DISCIPLINE/DISMISSAL/RELEASE  
Government Code 54957
  - B. CONFERENCE WITH LEGAL COUNSEL - ANTICIPATED LITIGATION  
Significant exposure to litigation pursuant to subdivision (b) of Section 54956.9: one potential case
5. CALL TO ORDER - REGULAR SESSION - 7:30 P.M.  
*Please turn off pagers and cell phones during the meeting.*

**Mission Statement:** *The Orange Unified School District, being committed to planning for continual improvement, will offer a learning environment of excellence, with high expectations, to provide each student with the opportunity to be able to compete in the global economy.*

6. PLEDGE OF ALLEGIANCE
7. REPORT OF CLOSED SESSION DECISIONS AS REQUIRED BY THE BROWN ACT
8. ADOPTION OF AGENDA

**9. ANNOUNCEMENTS AND ACKNOWLEDGMENTS**

A. Superintendent's Report .....	1
B. Board President's Report .....	1
C. Board Recognition of Students, Staff, and Community .....	1
D. State of the School Report: Hillary Christiansen, El Modena High School .....	1

**10. APPROVAL OF MINUTES**

October 12, 2006 Regular Board Meeting  
 October 26, 2006 Regular Board Meeting

**11. COMMUNICATIONS TO THE BOARD**

*Members of the audience may address the Board of Education on items not on the agenda at this time. Speaking time is limited to three (3) minutes per speaker with a maximum of twenty (20) minutes per topic. Persons wishing to address the Board should complete and submit a blue speaker card, available on the information table, prior to the meeting. In accordance with Government Code Section 54954.3, matters not on the agenda may not be acted on or discussed by the Board, but will be researched and responded to in any one of the following ways: 1) by telephone after research; 2) by mail after research; or 3) at a subsequent Board meeting as an agenda item.*

**12. ACTION ITEMS**

A. Resolution No. 15-06-07: Adoption of the Statutory and Alternate School Fees ("Reportable Fees") Report for Fiscal Year 2005-06 and Findings Thereon, In Compliance with Government Code Sections 66006 and 66001 .....	2-17
B. Plan for Supplementary Secondary School Counseling Program .....	18-21
C. Tentative Agreement between Orange Unified School District and Orange Unified Education Association, for 2006-07 Re-Opener Negotiations, and Attached AB 1200 Information .....	22-29
D. Tentative Agreement between Orange Unified School District and California School Employees Association, Chapter #67, for 2006-07 Re-Opener Negotiations, And Attached AB 1200 Information .....	30-32

**13. INFORMATION/DISCUSSION ITEMS**

(No Items)

**14. CONSENT ITEMS**

*Consent items are acted upon by one motion. However, any such item can be considered separately at a Board member's request, in which case it will be acted upon following approval of the Consent Items.*

**BUSINESS SERVICES**

A. Purchase Orders List .....	33
B. Warrants List .....	34
C. Gifts .....	35
D. Contract Services Report - Business Services .....	36
E. Acceptance of Completed Contract(s) and Filing of Notice(s) of Completion .....	37-38
F. Approval of Contract Renewal for Solid Waste Collection and Disposal and Enhanced Recycling Program Services .....	39
G. Approval of Contract Awards for Modernization Project Moving Services .....	40
H. Award of Bid No. FC6005: Demolition and Abatement - Esplanade Elementary School .....	41-42
I. Award of Bid No. FC 6008: Demolition and Abatement - Jordan Elementary School .....	43-44
J. Award of Bid No. FC6011: Demolition and Abatement - Portola Middle School .....	45-46
K. Award of Bid No. 587: Asphalt Replacement - Basketball Courts at Cerro Villa Middle School .....	47

**HUMAN RESOURCES**

L.	Personnel Report .....	48-64
M.	Classified Position Range Adjustment: Campus Security Officer .....	65
N.	Maintenance/Operations and Facilities/Planning Department Reorganization .....	66-68

**EDUCATIONAL SERVICE**

O.	Contract Services Report: Educational Services .....	69-71
P.	Study Trips .....	72
Q.	School Readiness Nurse Expansion Program: New Contract with the Children and Families Commission of Orange County to Provide Grant Funding .....	73
R.	Agreement with Tobacco-Free Communities Services - Orange County on Track .....	74
S.	Textbook Adoptions - Final .....	75-76
T.	Special Education Non-Public Schools & Designated Instructional Services - 2006-07 .....	77-78
U.	Expulsion of Student: Case No. 06-07-09 .....	79
V.	Expulsion of Student: Case No. 06-07-10 .....	80
W.	Expulsion of Student: Case No. 06-07-11 .....	81
X.	Expulsion of Student: Case No. 06-07-12 .....	82

**BOARD OF EDUCATION**

Y.	Notice of Annual Organizational Meeting - December 14, 2006 .....	83
Z.	California School Boards Association: Delegate Assembly Nominations .....	84-85

**15. COMMUNICATIONS TO THE BOARD**

*Members of the audience may address the Board of Education on items not on the agenda at this time. Speaking time is limited to three (3) minutes per speaker with a maximum of twenty (20) minutes per topic. Persons wishing to address the Board should complete and submit a blue speaker card, available on the information table, prior to the meeting. In accordance with Government Code Section 54954.3, matters not on the agenda may not be acted on or discussed by the Board, but will be researched and responded to in any one of the following ways: 1) by telephone after research; 2) by mail after research; **or** 3) at a subsequent Board meeting as an agenda item.*

**16. OTHER BUSINESS**

Board/Staff Conference and Comments

**17. ADJOURNMENT****18. CALENDAR OF REMAINING 2006 BOARD MEETINGS**

December 14, 2006

**19. CALENDAR OF PROPOSED 2007 BOARD MEETINGS (Dates are subject to change.)**

January 18, 2007	June 21, 2007
February 8, 2007	July 19, 2007
February 22, 2007	August 23, 2007
March 8, 2007	September 13, 2007
March 29, 2007	September 27, 2007
April 19, 2007	October 11, 2007
May 10, 2007	October 25, 2007
May 24, 2007	November 15, 2007
June 7, 2007	December 13, 2007

---

ANNOUNCEMENTS  
AND  
ACKNOWLEDGMENTS

---

TOPIC:

**ANNOUNCEMENTS & ACKNOWLEDGMENTS**

DESCRIPTION:

**9.A. Superintendent's Report**

**9.B. Board President's Report**

**9.C. Board Member Recognition of Students,  
Staff, and Community**

**9.D. State of the School Report**  
*Hillary Christiansen, El Modena High School*

---

# ACTION ITEMS

---

TOPIC:	<b>RESOLUTION NO. 15-06-07: ADOPTION OF THE STATUTORY SCHOOL FEES ("REPORTABLE FEES") REPORT FOR FISCAL YEAR 2005-06 AND FINDINGS THEREON, IN COMPLIANCE WITH GOVERNMENT CODE SECTIONS 66006 AND 66001</b>
DESCRIPTION:	Government Code, Sections 66006 and 66001 mandate that the District is to prepare a yearly report of the developer fees that have been collected, the interest earned thereon and the expenditures ("Annual Report"). Once the Annual Report has been made available for public Review (Note: notice placed in City of Orange public libraries October 24, 2006, and advertised in the <i>Orange County Register</i> on November 2, 2006) the Board of Education must review and consider the Annual Report at its next regular meeting, but no sooner than fifteen days after the Annual Report has been made available to the public.
FISCAL IMPACT:	This report has no fiscal impact.
RECOMMENDATION:	It is recommended that the Board of Education adopt Resolution No. 15-06-07, as presented.

**RESOLUTION NO. 15-06-07**  
*of the*  
**BOARD OF EDUCATION**  
*of the*  
**ORANGE UNIFIED SCHOOL DISTRICT**

**RELATING TO INFORMATION MADE AVAILABLE TO THE PUBLIC  
IN THE FORM OF A STATUTORY SCHOOL FEES  
("REPORTABLE FEES") REPORT FOR FISCAL YEAR 2005-2006  
("REPORTABLE FEES REPORT"), AND FINDINGS THEREON, IN  
COMPLIANCE WITH GOVERNMENT CODE SECTIONS 66006 AND 66001**

**WHEREAS**, in fiscal year 2005-2006, Orange Unified School District ("District") has received and expended Reportable Fees in connection with school facilities ("School Facilities") of the District for students resulting from new development and authorized costs incidental thereto; and

**WHEREAS**, these Reportable Fees have been deposited in a capital facilities account or sub-account ("Account") as provided by Section 66006(a) of the Government Code; and

**WHEREAS**, in accordance with Section 66006(a) of the Government Code, the District has established and maintained a separate Account and maintained such Account in a manner to avoid any commingling of the Reportable Fees with other revenues and funds of the District, except for temporary investments, and has expended those Reportable Fees collected for the purposes for which they were collected and authorized costs incidental thereto; and

**WHEREAS**, Section 66006(b)(1) of the Government Code provides that the District shall make available to the public within one hundred eighty (180) days after the last day of each fiscal year the following information in the form of a Reportable Fees Report:

- (A) A brief description of the type of Reportable Fees in the Account.
- (B) The amount of the Reportable Fees.
- (C) The beginning and ending balance of the Account.
- (D) The amount of the Reportable Fees collected and the interest earned.
- (E) An identification of each project ("Project") of the District on which Reportable Fees were expended and the amount of the expenditures on each Project, including the total percentage of the cost of the Project that was funded with Reportable Fees.
- (F) An identification of an approximate date by which the construction of a Project will commence if the District determines that sufficient funds have been collected to complete financing on an incomplete Project, as identified in paragraph (2) of subdivision (a) of Section 66001, and the Project remains incomplete.
- (G) A description of each interfund transfer or loan made from the Account, including the Project on which the transferred or loaned Reportable Fees will be expended, and, in the case of an interfund



loan, the date on which the loan will be repaid, and the rate of interest that the Account will receive on the loan.

- (H) The amount of refunds made pursuant to subdivision (e) of Section 66001 and any allocations pursuant to subdivision (f) of Section 66001; and

**WHEREAS**, Section 66001(d) of the Government Code provides that for the fifth fiscal year following the first deposit into the Account, and every five years thereafter, the District shall make all of the following findings with respect to that portion of the Account remaining unexpended, whether committed or uncommitted:

- (1) Identification of the purpose to which the Reportable Fees are to be put.
- (2) Demonstration of a reasonable relationship between the Reportable Fees and the purpose for which they are charged.
- (3) Identification of all sources and amounts of funding anticipated to complete financing of the Projects of the District.
- (4) Designation of the approximate dates on which the funding referred to in paragraph (3) is expected to be deposited into the Account; and

**WHEREAS**, when findings are required by Section 66001(d) of the Government Code, they shall be made in connection with the information required by Section 66006 of the Government Code; and

**WHEREAS**, Section 66006(b)(2) of the Government Code requires the Board of Education ("Board") to review the information made available to the public at a regularly scheduled public meeting and any other relevant information including, but not limited to, that certain Reportable Fees Report prepared for District entitled "GOVERNMENT CODE SECTIONS 66006 AND 66001 ANNUAL AND FIVE YEAR REPORTS FOR FISCAL YEAR 2005-2006" not less than fifteen (15) days after this Reportable Fees Report is made available to the public, which Reportable Fees Report is on file at the District's Office and is herein incorporated.

**WHEREAS**, the costs the District has incurred by compliance with the annual and five year reporting requirements pursuant to Government Code Sections 66006 and 66001 are State-mandated local costs.

**WHEREAS**, the District may file an annual reimbursement claim with the State for reimbursement of these costs; and

**WHEREAS**, the District has complied with all of the foregoing provisions.

**NOW, THEREFORE, ON BEHALF OF THE DISTRICT IT IS HEREBY RESOLVED, DETERMINED AND ORDERED AS FOLLOWS:**

**Section 1.** That pursuant to Government Code Sections 66001(d) and 66006(b)(1) and (2), the District has made available to the public the requisite information and proposed findings concerning collection and expenditure of Reportable Fees related to School Facilities for students resulting from new development within the District and authorized costs incidental thereto.

**Section 2.** That the Board of the District at public meeting has reviewed the following information pursuant to Government Code Section 66006(b)(1) as is required by Government Code Section 66006(b)(2):

- (A) A brief description of the type of Reportable Fees in the Account.
- (B) The amount of the Reportable Fees.
- (C) The beginning and ending balance of the Account.
- (D) The amount of Reportable Fees collected and the interest earned.
- (E) An identification of each Project on which Reportable Fees were expended and the amount of the expenditures on each Project, including the total percentage of the cost of the Project that was funded with Reportable Fees.
- (F) An identification of an approximate date by which the construction of the Project will commence if the District determines that sufficient funds have been collected to complete financing on an incomplete Project, as identified in paragraph (2) of subdivision (a) of Section 66001, and the Project remains incomplete.
- (G) A description of each interfund transfer or loan made from the Account, including the Project on which the transferred or loaned Reportable Fees will be expended, and, in the case of an interfund loan, the date on which the loan will be repaid, and the rate of interest that the Account will receive on the loan.
- (H) The amount of refunds made pursuant to subdivision (e) of Section 66001 and any allocations pursuant to subdivision (f) of Section 66001; and

**Section 3.** That the Board of the District at a public meeting has reviewed the herein provided proposed findings as required by Government Code Section 66001(d):

- (1) Identification of the purpose to which the Reportable Fees are to be put.
- (2) Demonstration of a reasonable relationship between the Reportable Fees and the purpose for which they are charged.
- (3) Identification of all sources and amounts of funding anticipated to complete financing of Projects of the District.
- (4) Designation of the approximate dates on which the funding referred to in paragraph (3) is expected to be deposited into the Account.

**Section 4.** That the Board of the District hereby determines that all Reportable Fees, collections and expenditures, as set forth in the Reportable Fees Report have been received, deposited, invested, accounted, expended, and reported in compliance with the relevant sections of the Government Code and all other applicable laws.

**Section 5.** That the Board of the District hereby determines that no refunds and allocations of Reportable Fees, as required by Government Code Section 66001, are deemed payable at this time.

**Section 6.** That the Board of the District hereby determines that the District is in compliance with Government Code Section 66000 *et seq.* Relative to receipt, deposit, investment, accounting, expenditure, reporting or refund of Reportable Fees received and expended relative to School Facilities for students resulting from new development.

**Section 7.** That the Board of the District hereby delegates authority to the Superintendent, or his or her designee, to file an annual reimbursement claim with the State for the reimbursement of costs the District has incurred by complying with the annual and five year reporting requirements pursuant to Government Code Sections 66006 and 66001.

If the administrative costs of preparing and filing an annual reimbursement claim pursuant to Government Code Section 17500 *et seq.*, exceed the amount to be reimbursed, the Superintendent, or his or her designee may, in his or her discretion, decide not to file an annual reimbursement claim.

IN WITNESS OF THE ABOVE-STATED ACTION, I have hereunto set my hand this 16<sup>th</sup> day of November, 2006.

AYES:

NOES:

ABSENT:

ABSTAIN:

November 16, 2006

By: \_\_\_\_\_  
Wes Poutsma Clerk of the Board of Education

**GOVERNMENT CODE SECTIONS 66006 AND 66001  
ANNUAL AND FIVE-YEAR REPORTS  
FOR FISCAL YEAR 2005-06**

**Orange Unified School District  
1401 N. Handy Street  
Orange, California 92867**

**October 23, 2006**

---

## ***I. INTRODUCTION***

---

Government Code Sections 66006 and 66001 provide that the Orange Unified School District (“District”) shall make available to the public certain information and adopt described findings relative to statutory and alternative school fees (“Statutory School Fees and Alternative School Fees”) collected pursuant to Government Code Sections 53080 *et seq.* and 65995 *et seq.*, Senate Bill 201 fees collected pursuant to Government Code Section 65970 *et seq.*, and Mitigation Payments (collectively “Reportable Fees”). The described information and findings relate to Reportable Fees received, expended or to be expended in connection with school facilities to accommodate additional students from new development if funded or partially funded with Reportable Fees. The Reportable Fees do not include special tax proceeds, proceeds of bonds, or funds from any debt instrument secured by Reportable Fees in hand or Reportable Fees to be collected at a future date. Reportable Fees have not been levied, collected, or imposed for general revenue purposes.

The following Annual and Five-Year Reports include the information and proposed findings the District intends to review and adopt in accordance with Government Code Sections 66006 and 66001.

---

## ***II. ANNUAL REPORT***

---

In accordance with Government Code Section 66006 (B)(1) and (2), the District hereby presents the following information for fiscal year 2005-06:

**A. Description of the type of reportable fees in the account or sub-account(s) of the District**

The Reportable Fees for the District in fiscal year 2005-06, consist of Statutory School Fees provided for by Board Resolution No. 43-03-04 and No. 41-05-06 that were adopted by the District's Governing Board ("Board") on May 27, 2004, and March 9, 2006, respectively, along with the *Residential and Commercial/Industrial Development School Fee Justification Studies* ("Taussig School Fee Justification Study") prepared by David Taussig and Associates, Inc.

**B. Amount of the reportable fees**

During fiscal year 2005-06, the applicable Statutory and Alternative School Fees on the assessable space of residential development were \$2.24 per square foot from February 6, 2005, through May 7, 2006, as provided for by Board Resolution No. 43-03-04 adopted May 27, 2004; and \$2.63 per square foot from May 8, 2006, as provided for by Board Resolution No. 41-05-06 adopted March 9, 2006.

During fiscal year 2005-06, the applicable Statutory School Fees for enclosed space of commercial/industrial and senior citizen development were \$0.36 per square foot from July 26, 2004, through May 7, 2006, as provided for by Board Resolution No. 43-03-04 adopted May 27, 2004; and \$0.42 per square foot from May 8, 2006, through June 30, 2006, as provided for by Board Resolution No. 41-05-06 adopted March 9, 2006.

The statutory school fee amounts for residential development stated above only partially mitigate the impact to the District caused by new residential development because the residential Statutory School Fees do not adequately fund land acquisition and school construction costs required as a result of additional development within the District. The *Residential Development Mitigation Payment Justification Study for Orange Unified School District, November 20, 1997*, ("Taussig Mitigation Payment Justification Study") prepared by David Taussig and Associates, Inc. adopted by the Board on March 26, 1998, by Board Resolution 15-97-98 provides for mitigation payments of \$8,377.00 for each new single family detached dwelling unit and \$4,083.00 for each new multi-family attached dwelling unit. This is not to say that during the fiscal year covered by this report that the mitigation payments provided for in the Taussig Mitigation Payment Justification Study fully mitigates the impact of students generated by new residential and commercial/industrial developments.

C. **Beginning and ending balance of account and sub-account(s):**

Table 1 below lists the fiscal year 2005-06 beginning and ending balances for the Capital Facilities Fund, Fund 25, which holds all Reportable Fees:

**TABLE 1**

ITEM	REPORTABLE FEES
Beginning Balance (7/1/05)	\$4,068,275.93
Ending Balance (6/30/06)	\$4,562,744.32

D. **Amount of the reportable fees collected and interest earned**

Table 2 shows the amount of reportable fees collected to accommodate students from additional development ("Project Students") and interest earned during fiscal year 2005-06:

**TABLE 2**

ITEM	TOTAL
Amount Collected	\$1,589,663.71
Gains/Losses on Investments	\$590.21
Interest Earned	\$183,024.24
Total	\$1,773,278.16

E. **Identification of each improvement for which Reportable Fees were expended and the amount of the expenditures for each project, including the total percentage of the cost of each project that was funded with Reportable Fees**

The Reportable Fees expended on projects and the reportable fees expended for administrative costs in connection with the adoption, collection and reporting of reportable fees is set forth in Schedule "A" attached hereto and incorporated herein by reference.

F. **Identification of an approximate date by which the construction of project(s) of the District will commence if the District determines that sufficient funds have been collected to complete financing on an incomplete project of the District, as identified in paragraph (2) of subdivision (a) of section 66001, and the project of the District remains incomplete.**

The approximate date by which the construction of school facilities for Project Students is undetermined as of the date of this report because of the uncertain future economy of the

State of California and its impact on new development.

The sufficiency of funding for the construction of future school facilities for the housing of Project Students is dependent upon the availability of new construction funds provided to the District under the current School Facilities Program to match new construction funds provided by the District and, therefore, may be insufficient to complete the financing of new school facilities for Project Students.

**G. Description of each interfund transfer or loan made from the account or sub-account(s), including project(s) of the District on which the transferred or loaned Reportable Fees will be expended and, in the case of an interfund loan, the date on which the loan will be repaid, and the rate of interest that the account or sub-account(s) will receive on the loan**

The District reports no transfers or loans of Reportable Fees during fiscal year 2005-06 for expenditures in connection with projects that are not for the housing of students.

**H. The amount of refunds made or revenues allocated for other purposes if the administrative costs of refunding unexpended revenues exceed the amount to be refunded**

The District reported no refunds of Reportable Fees during fiscal year 2005-06 for which the administrative costs of refunding exceed the amount to be refunded.



---

### **III. FIVE YEAR REPORT**

---

In accordance with Government Code Section 66001, the District provides the following information with respect to that portion of the account or sub-account(s) remaining unexpended, whether committed or uncommitted.

**A. Identification of the purpose to which the Reportable Fees are to be expended**

The purpose of the Reportable Fees levied, collected or imposed on new residential and commercial/industrial development within the District during fiscal year 2005-06 is to fund the additional grades K-12 School Facilities required to accommodate the grades K-12 Project Students generated by new development within the District. Specifically, the Reportable Fees will be used for the construction and/or acquisition of additional School Facilities to house Project Students; the remodeling of existing School Facilities to add additional classrooms and technology to house Project Students; and the acquisition and installation of relocatable classrooms to house Project Students.

**B. Demonstration of a reasonable relationship between the Reportable Fees and the purposes for which they are charged**

There is a sufficient proportional, reasonable relationship between the new development upon which the Reportable Fees are charged and the need for additional School Facilities by reason of the fact that additional students will be generated by additional development within the District and the District does not have the capacity in its existing School Facilities to accommodate these new students. Furthermore, the Reportable Fees charged on new development will be used to fund School Facilities that will be used to house the students generated from new development and the Reportable Fees do not exceed the costs of providing such School Facilities for new students as set forth in the *Taussig School Fee Justification Study* and the *Taussig Mitigation Payment Justification Study* referred to herein.

**Schedule "A"**  
**Developer Fees Expenditure Report 2005-06**  
**(Based on 2005-06 Budget Summary Report, as of June 30, 2006)**

Site	Description	Expenditures	Percent Funded by Reportable Fees
Anaheim Hills ES	Building Improvements - Move two portables from Canyon Rim ES to Anaheim Hills advanced by developer fees and reimbursed by CFD #2005-1	\$ 11,800.00	100%
California ES	Building Improvements to meet DSA approval, Second lease payment of a three year lease for one relocatable classroom due to changing from MTYR to STYR	\$ 5,652.25	100%
Cambridge ES	Fourth annual payment pursuant to a seven year lease/purchase agreement for one relocatable classroom.	\$ 4,685.83	100%
Canyon Rim ES	Fourth annual payment pursuant to a seven year lease/purchase agreement for two relocatable classrooms	\$ 9,371.66	100%
Esplanade ES	Building Improvements - ADA & fire alarm upgrades to meet DSA approval & closeout applications	\$ 1,104.31	100%
Fairhaven ES	Supplies - lunch tables & phones; Outside Services - relocate one portable to Fairhaven; Building Improvement - due to district changing from MTYR to STYR, ADA upgrades to meet DSA approval & closeout applications	\$ 64,534.00	100%
Jordan ES	Supplies, Fencing, Fees, Building Improvement - to meet DSA approval & closeout applications	\$ 2,266.66	100%
La Veta ES	Fifth annual payment on a seven year lease/purchase agreement for one relocatable classroom; Supplies; Building Improvement - to meet DSA approval & closeout applications	\$ 6,213.79	100%
Lampson ES	Due to district changing from MTYR to STYR - Supplies - lunch tables/benches, cart; Fencing; Outside Professional Services - Architectural and Inspection services for relocation of two portables; Building Improvement - moving and installtion of portable classrooms	\$ 32,555.07	100%
Nohl Canyon ES	Fifth annual payment pursuant to a seven year lease/purchase agreement for one relocatable classroom; to meet DSA approval - Fencing; Building Improvement - installation of signage, stripping, fire alarm testing, alternations to four restroom	\$ 59,406.23	100%
Olive ES	Second lease payment of a three year lease for two relocatable classrooms due to boundary shift at Taft ES related to changing from MTYR to STYR; Fencing and Building Improvements to meet DSA approval	\$ 27,256.02	100%
Palmyra ES	Building Improvements - new ramps, signage and testing of fire alarm devices to meet DSA approval and close applications. Fourth annual payment pursuant to a seven year lease/purchase agreement for two relocatable classrooms.	\$ 13,546.17	100%

**Schedule "A"**  
**Developer Fees Expenditure Report 2005-06**  
**(Based on 2005-06 Budget Summary Report, as of June 30, 2006)**

Site	Description	Expenditures	Percent Funded by Reportable Fees
Prospect ES	Building Improvements - to meet DSA approval and close out applications. Fifth annual payment pursuant to a seven year lease/purchase agreement for one relocatable classroom.	\$ 5,030.88	100%
Riverdale ES	Building Improvements - to meet DSA approval and close out applications.	\$ 3,023.54	100%
Running Springs ES	Fifth annual debt service payment pursuant to a seven year lease/purchase agreement for each of four portables	\$ 20,574.15	100%
Serrano ES	Building Improvement - installation of ADA signs to meet DSA approval	\$ 750.00	100%
Sycamore ES	Building Improvements -Second lease payment of a three year lease for one relocatable classroom due to changing from MTYR to STYR	\$ 5,496.00	100%
Taft	Building Improvement - ADA upgrades to meet DSA approval & closeout applications	\$ 2,120.94	100%
Villa Park ES	Building Improvement - ADA upgrades to meet DSA approval & closeout applications	\$ 4,261.34	100%
West Orange ES	Fencing; Building Improvement - Installation of ADA ramps, extend fence, open/close electrical boxes to meet DSA approval to closeout applications	\$ 9,040.97	100%
Cerro Villa MS	Fourth annual payment pursuant to a seven year lease/purchase agreement for three relocatable classrooms and fifth annual payment pursuant to a seven year lease/purchase agreement for one relocatable classroom.	\$ 19,201.03	100%
El Rancho MS	Building Improvement - Second lease payment of a three year lease for one relocatable classroom due to district changing from MTYR to STYR.	\$ 5,496.00	100%
Portola MS	Fourth annual payment pursuant to seven year lease/purchase agreement for four relocatable classrooms;Fencing; Building Improvements - ADA upgrades to meet DSA approval & closeout applications	\$ 21,393.31	100%
Yorba MS	Outside Professional Services - architectural design services to convert counseling office/staff work room to classrooms	\$ 5,899.62	100%
Canyon HS	Fourth annual payment pursuant to a seven year lease/purchase agreement for three relocatable classrooms.	\$ 14,917.99	100%
El Modena HS	Buildings and Improvement of Buildings - install ADA signage, alterations to restrooms, install ADA ramps to meet DSA approval and closeout applications; fourth annual payment pursuant to seven year lease/purchase for four relocatable classrooms; cell phones for portable classrooms emergency communication	\$ 64,601.16	100%

**Schedule "A"**  
**Developer Fees Expenditure Report 2005-06**  
**(Based on 2005-06 Budget Summary Report, as of June 30, 2006)**

Site	Description	Expenditures	Percent Funded by Reportable Fees
Orange HS	Fourth annual payment pursuant to a seven year lease/purchase agreement for the acquisition of four relocatable classrooms; Fencing; Building Improvement - Install ADA signage, security locks, ADA ramps, alterations to restrooms to meet DSA approval and closeout applications	\$ 72,356.41	100%
Richland Continuation	Fourth annual payment pursuant to a seven year lease/purchase agreement for three relocatable classrooms.	\$ 14,057.49	100%
Villa Park HS	Fourth annual payment pursuant to a seven year lease/purchase agreement for two relocatable classrooms and fifth annual payment pursuant to a seven year lease/purchase agreement for 14 relocatable classrooms; Installation of ADA signs, DSA fees, ADA ramps, handrails to meet DSA approval and closeout applications.	\$ 87,617.84	100%
<b>Sub total</b>		<b>\$ 594,230.66</b>	
<b>Facilities &amp; Planning</b>			
	Buildings/Improvement of Buildings - electrical and computer drops due to Facilities Planning office expansion; moving 2 portables to storage at Walnut site	\$ 8,840.00	100%
	Printing Supplies	\$ 91.65	100%
	Publications/Advertisements	\$ 541.72	100%
	Outside Professional Services; e.g., legal, demographics, engineering, School Facility Program eligibility update and geotechnical	\$ 42,197.32	100%
	Legal Services	\$ 1,683.93	100%
	Mileage/Travel	\$ 1,652.00	100%
	Miscellaneous fees	\$ 5,273.67	100%
	Payroll and benefits	\$ 252,587.06	100%
	Postage	\$ 235.08	100%
	Printing service for the reproduction of plans and specifications for capital improvements	\$ 48.66	100%
	Supplies	\$ 6,601.80	100%
	Vehicle Repair	\$ 1,700.46	100%
	New Equipment - purchased two vehicles	\$ 14,000.01	100%
	New Equipment - conference table and computer	\$ 1,670.60	100%
	Conference/Seminars/Workshops	\$ 8,095.61	100%
	Maintenance Contract/Copier	\$ 1,371.64	100%
	Communications/Telephone	\$ 1,225.79	100%
	Repairs/Services - labor for vehicle maintenance and repair	\$ 729.00	100%
	Software License	\$ 2,693.75	100%
<b>Construction</b>			100%
	Payroll and benefits	\$ 270,728.07	100%
	Supplies - security gate for plan room; various sites DSA signs and locks to close out DSA applications	\$ 9,282.80	100%

**Schedule "A"**  
**Developer Fees Expenditure Report 2005-06**  
**(Based on 2005-06 Budget Summary Report, as of June 30, 2006)**

Site	Description	Expenditures	Percent Funded by Reportable Fees
	Conference/Seminars/Workshops	\$ 1,577.81	100%
	Mileage/Travel	\$ 793.63	100%
	Outside Professional Services - fire hydrant analysis at various sites	\$ 14,640.00	100%
	Buildings/Improvement of Buildings - various sites to close out DSA applications	\$ 36,317.05	100%
<b>Sub total</b>		<b>\$ 684,579.11</b>	
<b>Total</b>		<b>\$ 1,278,809.77</b>	

## Certification

I hereby certify that to the best of my knowledge the information provided in the Annual and Five Year Report of Expenditures of Reportable Fees for fiscal year 2005-06 is based on the best information available to the Facilities Planning Office regarding the collection and expenditure of Reportable Fees.



Michael L. Christensen  
Executive Director  
Facilities Planning

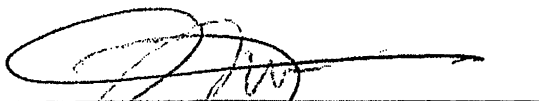


Sharon Schweitzer  
Executive Secretary  
Facilities Planning

Date: 10-31-06

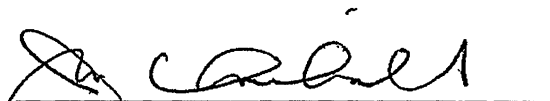
Date: 10-23-06

Reviewed and approved.



Joe Serrera  
Director of Fiscal Services

Date: 11/25/06



Jon Archibald  
Assistant Superintendent  
Business Services

Date: 10/26/06

**TOPIC: PLAN FOR SUPPLEMENTARY SECONDARY SCHOOL COUNSELING PROGRAM**

**DESCRIPTION:** The California State Legislature passed Assembly Bill 1802 in 2006, which provides supplemental funds to add additional Pupil Personnel Services (PPS) credentialed school counselors for students in grades 7-12. The purpose of this legislation is to ensure personalization by providing individual educational planning for all students, provide individualized counseling services for identified at-risk students, and to improve the counselor-to-student ratio.

In order to ensure student success, this legislation will provide on-going funding to OUSD for the employment of secondary school counselors, grades 7-12.

This plan will ensure personalization by providing individual education planning and counseling services for all students, grades 7-12.

**FISCAL IMPACT:** Depending on participation throughout the state, districts will receive approximately \$70-\$80 per student per prior year enrollment. For the current fiscal year OUSD has budgeted \$70 per student in grades 7-12.

**RECOMMENDATION:** It is recommended that the Board of Education approve the Plan for Supplemental Secondary School Counseling Program.

## **Plan for Supplemental Secondary School Counseling Program**

### **Introduction**

The California State Legislature passed Assembly Bill 1802 in 2006, which provides supplemental funds to add additional Pupil Personnel Services (PPS) credentialed school counselors for students in grades 7-12. The purpose of this legislation is to ensure personalization by providing individual educational planning for all students, provide individualized counseling services for identified at-risk students, and to improve the counselor-to-student ratio.

### **Background**

In order to ensure student success, this legislation will provide on-going funding to OUSD for the employment of secondary school counselors, grades 7-12 in order to participate in this program, OUSD must do the following:

1. Develop a plan that must be adopted at a public meeting of the governing board by December, 2006.
2. Provide an individual educational plan for all students.
3. Provide individualized counseling services to students identified as at-risk:
  - a. Students in grade 7 who scored Far Below Basic based on the 6<sup>th</sup> grade administration of the California Standards Test (CST)
  - b. Students in grades 10-12 who have not passed one or both sections of the high school exit exam
  - c. Students in grade 12 who are not on track to graduate

### **Funding**

Depending on participation throughout the state, districts will receive approximately \$70-80 per student per prior year enrollment. For the current fiscal year OUSD has budgeted \$70 per student in grades 7-12.

### **Plan**

#### **Part I: School Counselors**

1. Add additional PPS credentialed school counselors at the secondary school level.
2. Determine the number of and employ the additional counselors and/or provide extended work hours for existing counselors to provide the required services.
3. Counselors will be given information and updates regarding provisions of this program on an annual basis.

#### **Part II: Individual Educational Student Planning**

In accordance with the OUSD strategic plan counselors will work with students and parents to develop a personalized education plan to ensure academic success.



The provisions of AB 1802 require that the following must be provided by a PPS credentialed school counselor with each student in grades 7-12:

1. Review academic record.
2. Meet with each student annually (and parent/guardian if practicable) for the following purposes:
  - a. explain the academic and deportment records of the student
  - b. explain his or her educational options including;
    - college preparatory program
    - career and technical education including regional occupational centers and programs
    - any other alternatives available to students provided by OUSD
  - c. explain the coursework and academic progress needed for satisfactory completion of middle and high school
  - d. explain the necessity of passage of the high school exit examination

### Part III: Individualized Counseling Services for Students At-Risk

The provisions of AB 1802 require that the following must be provided by a PPS credentialed school counselor with each identified at-risk student:

1. Identify students who are at-risk:
  - a. Students in grade 7 who score in the far below basic level in English language arts or mathematics on the CST based on the 6<sup>th</sup> grade administration test date
  - b. Students in grades 10-12 who have not passed one or both parts of the CAHSEE
  - c. Students in grade 12 who are not on track to graduate
2. Develop a list of coursework and experience necessary to assist each at-risk student in the following grade levels:
  - a. Grade 7 to successfully transition to high school and meet all graduation requirements, including passing the high school exit examination
  - b. Grades 10-12 to successfully meet graduation requirements and transition to postsecondary education or employment, including passing the high school exit examination
  - c. Grade 12 for continuing his or her education if he or she fails to meet graduation requirements. These options shall include, but not be limited to, all of the following:
    - Enrolling in an adult education program
    - Enrolling in a community college
    - Enrolling in other alternatives available to students provided by OUSD
3. Make every effort to conduct an individual conference with each student, his or her parent or legal guardian and the school counselor.

4. Apprise the student and his or her parent or guardian of the following during the individual conference:
  - a. Consequences of not passing the high school exit examination
  - b. Programs, courses, and career technical education options available for students needed for satisfactory completion of middle or high school
  - c. Cumulative records and transcripts of the student
  - d. Performance on standardized and diagnostic assessments of the student
  - e. Remediation strategies, high school courses, and alternative education options available to the student
  - f. Information on postsecondary education and training
  - g. The student's score on the English language arts or mathematics portion of the CST administered in grade 6, as applicable
5. Provide a copy of the OUSD Academic Review/OUSD Grade 7 and 8 Report to the student and his or her parent or legal guardian.
6. Place a copy of the applicable report in the cumulative records of the student and document the conference in the student data base.
7. Timeline: The individual conference shall be scheduled, to the extent feasible, as follows;
  - a. For a student enrolled in grade 7, the conference shall occur before January of that school year in which the student is enrolled in grade 7.
  - b. For a student enrolled in grade 10, the conference shall occur between the spring of that school year in which the student is enrolled in grade 10 and the fall of the following school year in which the student would be enrolled in grade 11. In the 2006-2007 school year, students in the 11<sup>th</sup> grade must meet by December 31, 2006.
  - c. For a student enrolled in grade 12, the conference shall occur between November of that school year in which the student is enrolled in grade 12, but before March of the same school year.

#### Part IV: Provisions for Accountability

1. Each school site shall be responsible for the utilization of the student data base in documenting conferences.
2. The school district shall submit an annual report as required by the California Department of Education.
3. The Superintendent or designee is authorized to develop appropriate forms and administrative procedures to implement the Supplemental Secondary School Counseling Program Plan.

#### **Summary**

This plan will ensure personalization by providing individual education planning and counseling services for all students.

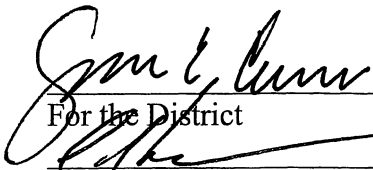

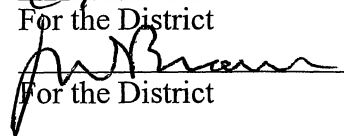
TOPIC:	<b>TENTATIVE AGREEMENT BETWEEN ORANGE UNIFIED SCHOOL DISTRICT AND ORANGE UNIFIED EDUCATION ASSOCIATION, FOR 2006-07 RE-OPENER NEGOTIATIONS, AND ATTACHED AB 1200 INFORMATION</b>
DESCRIPTION:	<p>This item pertains to the attached Tentative Agreement between the Orange Unified School District and the Orange Unified Education Association for the 2006-2007 re-opener negotiations. Under the terms of the Collective Bargaining Agreement, the parties agreed to re-open Article 2, pertaining to compensation for negotiations for 2006-2007. The Tentative Agreement provides for a salary increase of 6% effective July 1, 2006. Prior to the Tentative Agreement, comparison salaries for this group ranked an average of approximately 8<sup>th</sup> out of 10 comparable unified school districts in Orange County. With this Tentative Agreement in effect, as of the date of this transmittal, comparison salaries for this group would rank an average of approximately 4<sup>th</sup> out of 10 comparable unified school districts in Orange County. This Tentative Agreement concludes re-opener negotiations between the Orange Unified School District and the Orange Unified Education Association for 2006-2007.</p>
FISCAL IMPACT:	See attached AB 1200 analysis.
RECOMMENDATION:	It is recommended that the Board of Education ratify the Tentative Agreement between the Orange Unified School District and the Orange Unified Education Association.

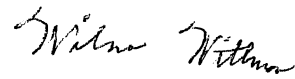
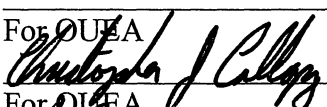

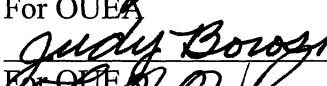
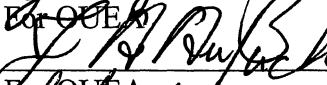
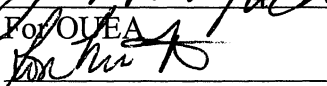
**Tentative Agreement**  
**Between**  
**Orange Unified School District**  
**And**  
**Orange Unified Education Association**  
**October 18, 2006**

The District shall provide a salary increase of 6% effective July 1, 2006 as reflected on the attached proposed 2006-2007 salary schedules.

This Tentative Agreement is subject to ratification. All the members of the bargaining teams for both OUSD and OUEA support and recommend the ratification of this tentative agreement. It is also understood that as a part of the approval process this tentative agreement is subject to the County Superintendent of School's review and positive certification prior to submittal to the Board of Education for approval ratification.

Employees who separated from the District on or before the date of ratification, but during the 2006-2007 school year, will be entitled to this salary increase. This tentative agreement concludes all negotiations between the parties through 2006-2007.

	10/14/06
For the District	Date
	10-18-06
For the District	Date
	10/18/06
For the District	Date

	10/18/06
For OUEA	Date
	10/18/06
For OUEA	Date
	10/18/06
For OUEA	Date
	10/18/06
For OUEA	Date
	10.18.6
For OUEA	Date
	10/18/06
For OUEA	Date

# TEACHER/NURSE SALARY MATRIX PROPOSED 2006-2007

STEP	COL 1	DAILY	COL 2	DAILY	COL 3	DAILY	COL 4	DAILY
	<b>BA+30</b>		<b>BA+45 OR MA</b>		<b>BA+75 or MA w/60</b>		<b>BA+75 w/MA or MA+45</b>	
ENTRY	<b>39,720</b>	214.705						
<b>1</b>	<b>45,122</b>	243.901	<b>47,979</b>	259.345	<b>51,961</b>	280.870	<b>52,652</b>	284.604
<b>2</b>	<b>46,700</b>	252.435	<b>49,659</b>	268.424	<b>53,780</b>	290.704	<b>54,495</b>	294.567
<b>3</b>	<b>48,335</b>	261.270	<b>51,396</b>	277.817	<b>55,662</b>	300.876	<b>56,401</b>	304.873
<b>4</b>	<b>50,027</b>	270.417	<b>53,195</b>	287.541	<b>57,611</b>	311.408	<b>58,376</b>	315.547
<b>5</b>	<b>51,777</b>	279.877	<b>55,057</b>	297.608	<b>59,627</b>	322.309	<b>60,419</b>	326.589
<b>6</b>	<b>53,590</b>	289.674	<b>56,984</b>	308.024	<b>61,714</b>	333.590	<b>62,533</b>	338.017
<b>7</b>	<b>55,466</b>	299.815	<b>58,978</b>	318.802	<b>63,874</b>	345.263	<b>64,722</b>	349.849
<b>8</b>	<b>57,406</b>	310.305	<b>61,043</b>	329.961	<b>66,109</b>	357.348	<b>66,987</b>	362.093
<b>9</b>	<b>59,416</b>	321.169	<b>63,180</b>	341.511	<b>68,423</b>	369.855	<b>69,332</b>	374.766
<b>10</b>			<b>65,390</b>	353.461	<b>70,819</b>	382.803	<b>71,759</b>	387.886
<b>11</b>					<b>73,297</b>	396.199	<b>74,270</b>	401.460
<b>12</b>					<b>75,862</b>	410.067	<b>76,870</b>	415.512
<b>13</b>							<b>79,560</b>	430.054
<b>14</b>								
<b>15</b>								
<b>16</b>					<b>78,518</b>	424.420	<b>82,345</b>	445.106
<b>17</b>								
<b>18</b>								
<b>22</b>					<b>81,266</b>	439.275	<b>85,227</b>	460.684
<b>26</b>							<b>88,210</b>	476.809
<b>30</b>							<b>92,090</b>	497.783

185 DAYS

ORANGE UNIFIED SCHOOL DISTRICT

**MATRIX 5**

**CC - COUNSELOR SALARY MATRIX  
PROPOSED 2006-2007**

6% Effective 7/1/06

STEP	COL 1	DAILY	COL 2	DAILY	COL 3	DAILY	COL 4	DAILY
	<b>BA+30</b>		<b>BA+45 OR MA</b>		<b>BA+75 or MA w/60</b>		<b>BA+75 w/MA or MA+45</b>	
1	48,571	249.081	51,040	261.744	55,045	282.282	56,042	287.395
2	50,271	257.800	52,826	270.905	56,971	292.158	58,004	297.457
3	52,030	266.821	54,675	280.386	58,965	302.384	60,034	307.869
4	53,852	276.163	56,589	290.198	61,029	312.970	62,135	318.641
5	55,736	285.824	58,569	300.354	63,165	323.922	64,309	329.791
6	57,687	295.829	60,620	310.870	65,377	335.265	66,561	341.337
7	59,707	306.188	62,741	321.747	67,664	346.996	68,890	353.284
8	61,796	316.902	64,937	333.008	70,031	359.136	71,302	365.650
9	63,959	327.994	67,209	344.664	72,482	371.705	73,797	378.446
10			69,561	356.722	75,020	384.717	76,380	391.691
11					77,647	398.188	79,053	405.400
12					80,364	412.124	81,819	419.587
13							84,684	434.279
14								
15								
16					83,176	426.543	87,649	449.484
17								
18								
22					86,087	441.474	90,716	465.212
26							93,891	481.492
30							97,870	501.896

195 DAYS

ORANGE UNIFIED SCHOOL DISTRICT

BOARD AGENDA - NOVEMBER 16, 2006

*Handwritten signature/initials*

## MATRIX 8

CM - MEDIA SPECIALIST SALARY MATRIX  
PROPOSED 2006-2007

6% Effective 7/1/06

	BA+30		BA+45 OR MA		BA+75 or MA w/60		BA+75&MA or MA+45	
1	49,501	247.504	51,896	259.482	56,145	280.726	56,937	284.684
2	51,234	256.170	53,712	268.561	58,110	290.548	58,929	294.643
3	53,027	265.136	55,593	277.964	60,143	300.716	60,992	304.958
4	54,883	274.414	57,538	287.690	62,250	311.248	63,126	315.631
5	56,804	284.021	59,551	297.756	64,427	322.136	65,336	326.679
6	58,792	293.962	61,636	308.180	66,682	333.410	67,623	338.117
7	60,850	304.250	63,793	318.966	69,016	345.082	69,989	349.947
8	62,979	314.894	66,026	330.132	71,432	357.161	72,439	362.197
9	65,184	325.919	68,337	341.685	73,933	369.666	74,974	374.872
10			70,728	353.639	76,520	382.602	77,599	387.995
11					79,199	395.997	80,314	401.571
12					81,970	409.851	83,126	415.630
13							86,034	430.171
14								
15								
16					84,840	424.199	89,047	445.233
17								
18								
22					87,809	439.046	92,164	460.818
26							95,389	476.946
30							99,484	497.419

200 DAYS

ORANGE UNIFIED SCHOOL DISTRICT

BOARD AGENDA - NOVEMBER 16, 2006

26/12

**CP/CO - PSYCHOLOGIST SALARY MATRIX  
PROPOSED 2006-2007**

6% Effective 7/1/06

	10 MONTH	DAILY
<b>STEP ENTRY</b>	<b>46,835</b>	234.177
<b>1</b>	<b>73,435</b>	367.176
<b>2</b>	<b>76,486</b>	382.431
<b>3</b>	<b>79,886</b>	399.428
<b>4</b>	<b>83,377</b>	416.883
<b>5</b>	<b>87,185</b>	435.927
<b>6</b>	<b>90,114</b>	450.570
<b>7</b>	<b>91,916</b>	459.581
<b>8</b>		
<b>9</b>		
<b>14</b>	<b>93,928</b>	469.642
<b>18</b>	<b>96,942</b>	484.710
<b>22</b>	<b>97,925</b>	489.627
<b>26</b>	<b>100,663</b>	503.317
<b>30</b>	<b>101,975</b>	509.873

200 DAYS



**SPEECH LANGUAGE THERAPIST SALARY SCHEDULE 6% Effective 7/1/06  
PROPOSED 2006 - 2007**

**MATRIX 10 (9E)**

STEP	COL 1	DAILY	COL 2	DAILY	COL 3	DAILY
	Emerg or Waiver w/ Speech w/BA+30		CREDENTIALLED Speech Therapy w/o MA		CREDENTIALLED Speech Therapy with MA	
1	47,634	253.372	50,539	268.823	55,287	294.077
2	49,238	261.903	52,245	277.897	57,159	304.038
3	50,899	270.741	54,011	287.290	59,098	314.349
4	52,619	279.888	55,839	297.015	61,103	325.015
5	54,398	289.353	57,732	307.085	63,178	336.056
6	56,239	299.145	59,690	317.498	65,329	347.494
7	58,146	309.287	61,716	328.279	67,553	359.325
8	60,118	319.778	63,814	339.434	69,854	371.566
9	62,160	330.638	65,985	350.982	72,237	384.242
10			68,231	362.933	74,702	397.352
11					77,255	410.932
12					79,897	424.984
13					82,632	439.529
14						
15						
16					85,461	454.582
17						
18						
22					88,390	470.159
26					91,422	486.286
30					95,364	507.257

188 DAYS

ORANGE UNIFIED SCHOOL DISTRICT

BOARD AGENDA - NOVEMBER 16, 2006

*hmm*  
*9/8*

**PROPOSED 2006-2007 R.O.P. SALARY SCHEDULE**

<b><u>STEP</u></b>	<b><u>RATE</u></b>
<b>1</b>	<b>31.30</b>
<b>2</b>	<b>32.71</b>
<b>3</b>	<b>34.26</b>
<b>4</b>	<b>36.97</b>

**181 Days**

**TOPIC:** **TENTATIVE AGREEMENT BETWEEN ORANGE UNIFIED SCHOOL DISTRICT AND CALIFORNIA SCHOOL EMPLOYEES ASSOCIATION, CHAPTER #67, FOR 2006-07 RE-OPENER NEGOTIATIONS, AND ATTACHED AB 1200 INFORMATION**

**DESCRIPTION:** This item pertains to the attached Tentative Agreement between the Orange Unified School District and the California School Employees Association, Chapter #67, for the 2006-2007 re-opener negotiations. Under the terms of the Collective Bargaining Agreement, the parties agreed to re-open Article 12, pertaining to compensation for negotiations for 2006-2007. The Tentative Agreement provides for a salary increase of 6% effective July 1, 2006. Prior to the Tentative Agreement, comparison salaries for this group ranked an average of approximately 7<sup>th</sup> out of 10 comparable unified school districts in Orange County. With this Tentative Agreement in effect, as of the date of this transmittal, comparison salaries for this group would rank an average of approximately 4<sup>th</sup> out of 10 comparable unified school districts in Orange County. This Tentative Agreement concludes re-opener negotiations between the Orange Unified School District and the California School Employees Association, Chapter #67, for 2006-2007.

**FISCAL IMPACT:** See attached AB 1200 analysis.

**RECOMMENDATION:** It is recommended that the Board of Education ratify the Tentative Agreement between the Orange Unified School District and the California School Employees Association, Chapter #67.

**Tentative Agreement  
Between  
Orange Unified School District  
And  
California School Employees Association, Chapter 67**

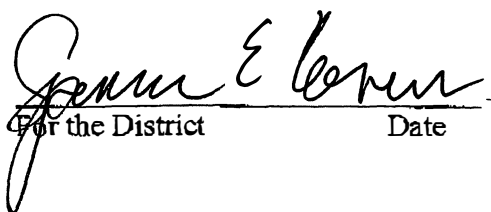
**October 25, 2006**

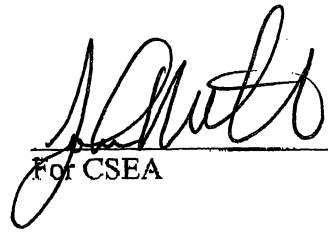
A salary increase will be provided effective July 1, 2006 and be applied to section 12.102 of the OUSD/CSEA Collective Bargaining Agreement, as amended, August 1, 2006, in order to maintain the current ratios:

Option C: Increase by 6.00%  
Option B: Increase to 5% less than Option C salary rates  
Option A: Increase to 5% less than Option B salary rates

This agreement concludes all negotiations between the District and CSEA for the 2006-07 school year.

This Tentative Agreement is subject to ratification and all members of both negotiating teams shall support and recommend the ratification of this Tentative Agreement.

 10/25/06  
For the District                      Date

 10-25-06  
For CSEA                              Date

Orange Unified School District  
AB 1200 Information for Fiscal Year 2006-07  
Collective Bargaining Agreements and Salary Adjustments for  
Orange Unified Education Association  
California School Employees Association  
Leadership Employees

November 16, 2006

**2006-07**

Estimated Revenue	\$236,587,723
Estimated Expenditures	<u>249,304,765</u>
Excess (Deficiency)	\$(12,717,042)

<b>Estimated Ending Balance</b>	<b>\$ 8,990,587</b>	
Other Designation	(731,127)	
Designated for Economic Uncertainties	<u>(7,479,143)</u>	3.0%
Unappropriated Amount	\$ 780,317	

**2007-08**

Assumptions:

- 4.70% COLA
- Ongoing OUEA/CSEA Costs
- No Additional Increase in H&W Benefits Paid

Estimated Revenue	\$240,915,079
Estimated Expenditures	<u>241,638,167</u>
Excess (Deficiency)	\$ (723,088)

<b>Estimated Ending Balance</b>	<b>\$ 8,267,499</b>	
Other Designations	(756,127)	
Designated for Economic Uncertainties	<u>(7,249,145)</u>	3.0%
Unappropriated Amount	\$ 262,227	

**2008-09**

Assumptions:

- 2.80% COLA
- Ongoing OUEA/CSEA Costs
- No Additional Increase in H&W Benefits Paid

Estimated Revenue	\$ 244,987,645
Estimated Expenditures	<u>244,905,205</u>
Excess (Deficiency)	\$ 82,440

<b>Estimated Ending Balance</b>	<b>\$ 8,349,939</b>	
Other Designations	(756,127)	
Designated for Economic Uncertainties	<u>(7,347,156)</u>	3.0%
Unappropriated Amount	\$ 246,656	

---

# CONSENT ITEMS

*ROUTINE ITEMS ACTED UPON IN ONE MOTION UNLESS PULLED FOR DISCUSSION AND SEPARATE ACTION.*

---

TOPIC: **PURCHASE ORDERS LIST**

DESCRIPTION: Purchase orders have been processed in accordance with the rules and regulations of the Board of Education and applicable legal requirements of the State of California.

District procedures and computer system controls require that an approved purchase order, pay voucher, current liability, or credit memo exist on the District's computer system prior to the issuance of warrants. There may be a multiple number of warrants drawn against a given purchase order up to the maximum amount for that purchase order. The system restricts the processing of payment amounts in excess of the issued purchase order.

It should be noted that the purchase order system allows for a one-line description of the services or items to be procured. The issued purchase order forms a contract between the District and the vendor.

FISCAL IMPACT: \$2,846,581.48

RECOMMENDATION: It is recommended that the Board of Education approve the Purchase Orders List dated October 16 through November 5, 2006 in the amount of \$2,846,581.48.

TOPIC: **WARRANTS LIST**

DESCRIPTION: Warrants have been processed in accordance with the rules and regulations of the Board of Education and applicable legal requirements of the State of California and the Orange County Department of Education.

District procedures and computer system controls require that an approved purchase order, pay voucher, current liability, or credit memo exist on the District's computer system prior to the issuance of warrants. There may be a multiple number of warrants drawn against a given purchase order up to the maximum amount for that purchase order. The processing of the warrant is in compliance with the contractual agreement that has been formed by the issuance of the purchase order.

FISCAL IMPACT: \$4,046,579.45

RECOMMENDATION: It is recommended that the Board of Education approve the Warrants List dated October 16 through November 5, 2006 in the amount of \$4,046,579.45.



TOPIC:

**GIFTS**

DESCRIPTION:

The gifts of equipment, educational materials, and/or cash as delineated on the attached list were donated to the Orange Unified School District for use as indicated. These items will be repaired or replaced at District expense only if economically feasible.

- One Compaq computer with keyboard to Orange HS, donated by Mr. John Hang
- Kodak Easy Share digital camera to Olive ES, donated by Ms. Darcy Norquist and Mr. Sean Haynes
- 240 copies of "A Brief History of the Orange Unified School District" to be used for community studies supporting third grade curriculum, donated by Mrs. Ruth C. Evans
- A variety of books to Olive ES, donated by Mrs. Gretchen Beatty
- A variety of books to the District, donated by the following law offices through a book-drive sponsored by the Orange County Bar Association:
  - Crowell & Moring
  - Alvarado & Smith
  - Dad's Law
  - Whittier Law School
  - Ferruzzo & Ferruzzo
  - Joseph Mudd Law Office
  - Howrey, LLP
  - Palumbo Bergstrom
  - Danielle Augustin Law Office
  - Watten Driscoe, Bassett & Melvin

FISCAL IMPACT:

This item has no fiscal impact.

RECOMMENDATION:

It is recommended the Board of Education accept these gifts of cash, equipment, and/or instructional materials and that a letter of appreciation be forwarded to each benefactor.

TOPIC: **CONTRACT SERVICES REPORT – BUSINESS SERVICES**

DESCRIPTION: The following is a report of contract service items for Business Services.

**NYBERG ARCHITECTS** The District requires the architectural and engineering services of a qualified architect for the alteration upgrades of restrooms due to the relocation of portable classrooms at Villa Park High School and Richland Continuation School. Nyberg Architects can provide these services. Cost includes the preparation of project specifications, DSA approval and all drawings (electrical, plumbing and structural).

Capital Facilities Fund.....not-to-exceed.....\$6,600  
25.00-0000-0-5850-0000-8500-417-417-000  
(including reimbursables) (Christensen/Filbeck)

**SCHOOL CONSTRUCTION COMPLIANCE, LLC** The Office of Public School Construction (OPSC) requires that school districts participating in the state modernization program have in place a Labor Compliance Program (LCP). One of the components of the LCP is that contractor's certified payroll reports are audited and their employees be interviewed. School Construction Compliance (SCC) provides these services for OUSD. This authorization is for SCC to provide the services necessary for the modernization of Esplanade ES, Jordan ES and Portola MS.

Esplanade Elementary School \$ 38,000  
Jordan Elementary School \$38,000  
Portola Middle School \$46,000

Special Reserve/Capital Projects.....not-to-exceed...\$122,000  
40.00-0803-0-6255-9520-8500-243-416-000  
40.00-0805-0-6255-9520-8500-248-416-000  
40.00-0806-0-6255-9520-8500-383-416-000  
(including reimbursables) (Christensen)

FISCAL IMPACT: \$128,600

RECOMMENDATION: It is recommended that the Board of Education approve the Contract Services Report – Business Services as presented.

TOPIC: **ACCEPTANCE OF COMPLETED CONTRACT(S) AND FILING OF NOTICE(S) OF COMPLETION**

DESCRIPTION: The contract(s) listed below have been completed and require acceptance by the Board of Education prior to filing of appropriate notice(s) of completion:

**BID 580 – EXTERIOR PAINTING**

Project(s):	Richland High School
Original Board Approval:	June 22, 2006
Original Purchase Order:	700822
Completion Date:	October 12, 2006
Contractor:	Southwest Coatings, Inc.
Original Project Amount:	\$28,500
Change Order(s) Amount:	\$ -0-
Total Project Amount:	\$28,500
Fund(s):	Deferred Maintenance (14)

**BID 582 – EXTERIOR PAINTING**

Project(s):	Crescent Primary
Original Board Approval:	June 22, 2006
Original Purchase Order:	700820
Completion Date:	October 9, 2006
Contractor:	Southwest Coatings, Inc.
Original Project Amount:	\$29,500
Change Order(s) Amount:	\$ -0-
Total Project Amount:	\$29,500
Fund(s):	Deferred Maintenance (14)

**BID 583 – EXTERIOR PAINTING**

Project(s):	Crescent Intermediate
Original Board Approval:	June 22, 2006
Original Purchase Order:	700819
Completion Date:	October 9, 2006
Contractor:	Southwest Coatings, Inc.
Original Project Amount:	\$34,500
Change Order(s) Amount:	\$ -0-
Total Project Amount:	\$34,500
Fund(s):	Deferred Maintenance (14)

**BID 577 – UNIT PRICE CONTRACT – ELECTRIC**

Project(s):	Canyon High School
Original Board Approval:	March 23, 2006
Original Purchase Order:	701251, 702071 & 700845
Completion Date:	October 17, 2006
Contractor:	Stone Electric, Inc.
Original Project Amount:	\$30,940

Change Order(s) Amount: \$ -0-  
Total Project Amount: \$30,940  
Fund(s): General Funds (01)

**BID 569 – UNIT PRICE CONTRACT – GENERAL**

Project(s): Villa Park Elementary School-  
Restroom Upgrades  
Original Board Approval: August 24, 2006  
Original Purchase Order: 702751  
Completion Date: October 28, 2006  
Contractor: Osowski Construction Co.  
Original Project Amount: \$22,250  
Change Order(s) Amount: (\$ 5,952) (Contingency amount  
not needed to complete project)  
Total Project Amount: \$16,297  
Fund(s): Capital Facilities Fund (25)

The Public Contract Code allows school districts to issue contract change orders for up to ten percent of the original contract value. The District typically funds change orders with monies from the original source. If there were no additional monies available, then the District would fund the change through the balance reserve account.

In accordance with Public Contract Code Section 7107, the final payment of the ten percent (10%) retention of the value of the work done under these agreements shall be made thirty-five (35) days after recording by the District of the Notice(s) of Completion at the County of Orange Recorder's Office.

FISCAL IMPACT: No additional fiscal impact.

RECOMMENDATION: It is recommended that the Board of Education accept the above contract(s) as complete, authorize staff to file appropriate notice(s) of completion and release the retention payment(s) to the contractor(s).

TOPIC:	<b>APPROVAL OF CONTRACT RENEWAL FOR SOLID WASTE COLLECTION AND DISPOSAL AND ENHANCED RECYCLING PROGRAM SERVICES</b>
DESCRIPTION:	<p>The firm of Waste Management of Orange County was competitively awarded a contract for Districtwide solid waste collection and recycling services. The contract provides for an initial one-year term, followed by four, one -year options. Last year, the District exercised the first annual option. For the following year commencing January 1, 2007, the basic monthly service rates for all District sites have increased from about \$16,600 to approximately \$17,150 (an increase of 3.4%). The rate increase is primarily attributable to energy and labor cost increases. The District's Enhanced Recycling Program component is performed by the firm at no cost.</p> <p>Based upon the good service and competitive rates, renewal of the contract is recommended.</p>
FISCAL IMPACT:	Expenditures are made from all sites, programs and department budgets. This is not a request for any additional budgetary appropriation.
RECOMMENDATION:	It is recommended that the Board of Education authorize staff to exercise the second annual option and renew the Solid Waste Collection and Disposal and Enhanced Recycling Services Program agreement with Waste Management of Orange County.

TOPIC: **APPROVAL OF CONTRACT AWARDS FOR MODERNIZATION PROJECT MOVING SERVICES**

DESCRIPTION:

**BACKGROUND**

The District is currently in need of moving services for four sites under the modernization program, Esplanade, Jordan and Prospect Elementary Schools and Portola Middle School. The first phase moves at Prospect Elementary were performed by District staff but the timing of these next moves will require the services of professional movers.

**REQUEST FOR PROPOSALS**

The District issued a Request for Proposals (RFP). The RFP called for the successful firm(s) to develop a move plan and provide experienced staff to deliver a full scope of moving services to meet the specialized needs of the projects.

**RESPONDENTS**

The District received three responsive proposals. The proposals were reviewed and evaluated by District staff utilizing the pre-established RFP evaluation criteria.

On the basis of the RFP criteria and construction schedules the firms, Cor-O-Van Moving and Storage, King Office Services, and Penn Corporate Relocation Services received rankings for each of the sites. It is recommended to award the lowest bid amount for each site project as listed:

FISCAL IMPACT:

**Cor-O-Van Moving and Storage**

Esplanade Elementary School.....\$35,118

40.00-0803-0-6276-9520-8500-243-416-000

Prospect Elementary School.....\$18,728

40.00-0807-0-6276-9520-8500-259-416-000

Special Reserves – Modernization

**King Office Services**

Jordan Elementary School.....\$33,200

40.00-0805-0-6276-9520-8500-248-416-000

Special Reserves – Modernization

**Penn Corporate Relocation Services**

Portola Middle School.....\$32,588

40.00-0806-0-6276-9520-8500-383-416-000

Special Reserves – Modernization

RECOMMENDATION:

It is recommended that the Board of Education award Moving Services agreements for modernization projects at Esplanade Elementary and Prospect Elementary Schools to **Cor-O-Van Moving and Storage**, at Jordan Elementary School to **King Office Services** and at Portola Middle School to **Penn Corporate Relocation Services**.

TOPIC: **AWARD OF BID NO. FC6005: DEMOLITION & ABATEMENT – ESPLANADE ELEMENTARY SCHOOL**

DESCRIPTION: Bid No. FC6005 is for the demolition and abatement modernization project at Esplanade Elementary School.

**RECAPITULATION**

BIDDER	BID
<b>* Janus Corporation</b>	<b>\$271,000</b>
Project Development Group	\$271,699
Tri Span	\$272,000
Service First Environmental	\$285,963
Unlimited Environmental	\$314,000
Castlerock Environmental	\$316,000
Total Environmental	\$323,428
Asbestos Instant Response	\$325,560
A & V Contractors	\$339,000
U.S. Construction	\$367,000
Interior Demolition	\$378,760
Miller Environmental	\$410,000
TEG/LVI Environmental	\$486,100
Karcher Environmental	\$508,200
CST Environmental	\$567,800
Envirotech Industries	\$670,000

\* Low Bidder

FISCAL IMPACT: \$271,000  
40.00-0803-0-6270-9520-8500-243-416-000  
Special Reserves - Modernization

RECOMMENDATION: It is recommended that the Board of Education award Bid No. FC6005 for the demolition and abatement modernization project at Esplanade Elementary School to Janus Corporation.

BID NO. FC6005  
DEMOLITION & ABATEMENT  
PROSPECT ELEMENTARY SCHOOL

*Bid Opening Date:* October 26, 2006  
*Department Requesting Project:* Facilities & Planning  
*Publication Dates:* September 21 & 28, 2006  
Orange City News

*The following vendors were provided a public notice calling for bids:*

All County Environmental	Metalclad Insulation Corp.
Alliance Environmental, Inc.	Miller Environmental, Inc.
Allied Environmental Services	Moore Flooring, Inc.
American Wrecking, Inc.	Norse
Apex Environmental Recovery, Inc.	Project Development Group, Inc.
CST Environmental, Inc.	Southwest Industries
Castlerock Environmental, Inc.	Specialized Environmental, Inc.
Envirotech Industries, Inc.	TEG/LVI Environmental Services, Inc.
Interior Demolition, Inc.	Total Environmental Industries, Inc.
Janus Corporation	Tri Span, Inc.
Karcher Environmental, Inc.	U.S. Construction
Marcor Remediation, Inc.	Unlimited Environmental
Mepco Services, Inc.	West Coast Air Conditioning Company, Inc.

*The following plan rooms were provided a public notice calling for bids:*

Associated General Contractors	F.W. Dodge / McGraw-Hill Dodge
Bid America	Reed Construction Data
Construction Bidboard, Inc.	Sub Hub

*Non-mandatory job walk and/or project conference attended by:*

Envirotech Industries, Inc.	Karcher Environmental, Inc.
Interior Demolition, Inc.	TEG/LVI Environmental Services, Inc.
Janus Corporation	Total Environmental Industries, Inc.

*Bids submitted by:*

A & V Contractors, Inc.	Miller Environmental, Inc.
Asbestos Instant Response, Inc.	Project Development Group, Inc.
CST Environmental	Service First Environmental
Castle Rock Environmental, Inc.	TEG/LVI Environmental Services, Inc.
Envirotech Industries, Inc.	Total Environmental Industries, Inc.
Interior Demolition, Inc.	Tri-Span, Inc.
Janus Corporation	U.S. Construction, Inc.
Karcher Environmental, Inc.	Unlimited Environmental, Inc.

*Bid opening attended by:*

Jan Casey, Cardinal Environmental	Kelly Gogerty, Tri Span, Inc.
Agustin Castillo, TEG/LVI Environmental	Rob Schaefer, Miller Environmental, Inc.
Chad Chandler, Janus Corporation	Frank Smith, Total Environmental Industries
Todd Ellertson, Castlerock Environmental	Karen Hungerford, OUSD
Juan Garcia, Janus Corporation	Jana Lichtenberger, OUSD

OUSD/Archibald/Kemp/Christensen  
Board Agenda  
November 16, 2006



TOPIC: **AWARD OF BID NO. FC6008: DEMOLITION & ABATEMENT – JORDAN ELEMENTARY SCHOOL**

DESCRIPTION: Bid No. FC6008 is for the demolition and abatement modernization project at Jordan Elementary School.

**RECAPITULATION**

BIDDER	BID
<b>* Miller Environmental</b>	<b>\$272,000</b>
Project Development Group	\$287,276
Tri Span	\$292,900
Janus Corporation	\$295,700
Castlerock Environmental	\$336,500
A & V Contractors	\$358,000
Total Environmental Industries	\$363,558
Unlimited Environmental	\$398,000
CST Environmental	\$447,800
MARCOR Remediation	\$458,000
Interior Demolition	\$469,655
Asbestos Instant Response	\$535,560
TEG/LVI Environmental	\$566,225
U.S. Construction	\$585,000

\* Low Bidder

FISCAL IMPACT: \$272,000  
40.00-0805-0-6270-9520-8500-248-416-000  
Special Reserves - Modernization

RECOMMENDATION: It is recommended that the Board of Education award Bid No. FC6008 for the demolition and abatement modernization project at Jordan Elementary School to Miller Environmental, Inc.

BID NO. FC6008  
DEMOLITION & ABATEMENT  
JORDAN ELEMENTARY SCHOOL

*Bid Opening Date:* October 26, 2006  
*Department Requesting Project:* Facilities & Planning  
*Publication Dates:* September 21 & 28, 2006  
Orange City News

*The following vendors were provided a public notice calling for bids:*

All County Environmental	Metalclad Insulation Corp.
Alliance Environmental, Inc.	Miller Environmental, Inc.
Allied Environmental Services	Moore Flooring, Inc.
American Wrecking, Inc.	Norse
Apex Environmental Recovery, Inc.	Project Development Group, Inc.
CST Environmental, Inc.	Southwest Industries
Castlerock Environmental, Inc.	Specialized Environmental, Inc.
Envirotech Industries, Inc.	TEG/LVI Environmental Services, Inc.
Interior Demolition, Inc.	Total Environmental Industries, Inc.
Janus Corporation	Tri Span, Inc.
Karcher Environmental, Inc.	U.S. Construction
Marcor Remediation, Inc.	Unlimited Environmental
Mepco Services, Inc.	West Coast Air Conditioning Company, Inc.

*The following plan rooms were provided a public notice calling for bids:*

Associated General Contractors	F.W. Dodge / McGraw-Hill Dodge
Bid America	Reed Construction Data
Construction Bidboard, Inc.	Sub Hub

*Non-mandatory job walk and/or project conference attended by:*

A & V Contractors	Janus Corporation
ACT, Inc.	Karcher Environmental, Inc.
Asbestos Instant Response, Inc.	TEG/LVI Environmental Services, Inc.
CST Environmental, Inc.	Total Environmental Industries, Inc.
Castlerock Environmental, Inc.	Tri Span, Inc.
HMD Group, Inc.	Unlimited Environmental
Interior Demolition, Inc.	

*Bids submitted by:*

A & V Contractors, Inc.	Miller Environmental, Inc.
Asbestos Instant Response, Inc.	Project Development Group, Inc.
CST Environmental, Inc.	TEG/LVI Environmental Services, Inc.
Castlerock Environmental, Inc.	Total Environmental Industries, Inc.
Interior Demolition, Inc.	Tri-Span, Inc.
Janus Corporation	U.S. Construction, Inc.
MARCOR Remediation, Inc.	Unlimited Environmental, Inc.

*Bid opening attended by:*

David Almendarez, A & V Contractors	Kelly Gogerty, Tri Span, Inc.
Jan Casey, Cardinal Environmental	Frank Smith, Total Environmental Industries
Agustin Castillo, TEG/LVI Environmental	Tom Fillbeck, OUSD
Chad Chandler, Janus Corporation	Karen Hungerford, OUSD
Juan Garcia, Janus Corporation	Jana Lichtenberger, OUSD

OUSD/Archibald/Kemp/Christensen  
Board Agenda  
November 16, 2006

TOPIC: **AWARD OF BID NO. FC6011: DEMOLITION & ABATEMENT – PORTOLA MIDDLE SCHOOL**

DESCRIPTION: Bid No. FC6011 is for the demolition and abatement modernization project at Portola Middle School.

**RECAPITULATION**

BIDDER	BID
<b>* Project Development Group</b>	<b>\$291,016</b>
Tri Span	\$367,338
TEG/LVI Environmental Services	\$371,830
Asbestos Instant Response	\$385,650
A & V Contractors	\$388,000
Miller Environmental	\$435,000
Janus Corporation	\$449,500
Total Environmental Industries	\$469,729
MARCOR Remediation	\$483,482
CST Environmental	\$547,800
U.S. Construction	\$566,000
Castlerock Environmental	\$578,300

\* Low Bidder

FISCAL IMPACT: \$291,016  
40.00-0806-0-6270-9520-8500-383-416-000  
Special Reserves - Modernization

RECOMMENDATION: It is recommended that the Board of Education award Bid No. FC6011 for the demolition and abatement modernization project at Portola Middle School to Project Development Group, Inc., dba PDG Environmental.

BID NO. FC6011  
DEMOLITION & ABATEMENT  
PORTOLA MIDDLE SCHOOL

*Bid Opening Date:* October 26, 2006

*Department Requesting Project:* Facilities & Planning

*Publication Dates:* September 21 & 28, 2006  
Orange City News

*The following vendors were provided a public notice calling for bids:*

All County Environmental	Metalclad Insulation Corp.
Alliance Environmental, Inc.	Miller Environmental, Inc.
Allied Environmental Services	Moore Flooring, Inc.
American Wrecking, Inc.	Norse
Apex Environmental Recovery, Inc.	Project Development Group, Inc.
CST Environmental, Inc.	Southwest Industries
Castlerock Environmental, Inc.	Specialized Environmental, Inc.
Envirotech Industries, Inc.	TEG/LVI Environmental Services, Inc.
Interior Demolition, Inc.	Total Environmental Industries, Inc.
Janus Corporation	Tri Span, Inc.
Karcher Environmental, Inc.	U.S. Construction
Marcor Remediation, Inc.	Unlimited Environmental
Mepco Services, Inc.	West Coast Air Conditioning Company, Inc.

*The following plan rooms were provided a public notice calling for bids:*

Associated General Contractors	F.W. Dodge / McGraw-Hill Dodge
Bid America	Reed Construction Data
Construction Bidboard, Inc.	Sub Hub

*Non-mandatory job walk and/or project conference attended by:*

A & V Contractors	Interior Demolition, Inc.
Asbestos Instant Response, Inc.	Janus Corporation
Alliance Environmental, Inc.	Karcher Environmental, Inc.
American Demolition / Concrete Cutting	Miller Environmental, Inc.
CST Environmental, Inc.	Service First Environmental
Environmental Construction, Inc.	TEG/LVI Environmental Services, Inc.
Envirotech Industries, Inc.	Total Environmental Industries, Inc.
HMD Group, Inc.	Tri Span, Inc.
Hillbrick Engineering	U.S. Construction

*Bids submitted by:*

A & V Contractors, Inc.	Miller Environmental, Inc.
Asbestos Instant Response, Inc.	Project Development Group, Inc.
CST Environmental, Inc.	TEG/LVI Environmental Services, Inc.
Castlerock Environmental, Inc.	Total Environmental Industries, Inc.
Janus Corporation	Tri-Span, Inc.
MARCOR Remediation, Inc.	U.S. Construction, Inc.

*Bid opening attended by:*

David Almendarez, A & V Contractors	Rob Schaefer, Miller Environmental, Inc.
Jan Casey, Cardinal Environmental	Frank Smith, Total Environmental Industries
Agustin Castillo, TEG/LVI Environmental	Kevin Ememaker, OUSD
Todd Ellertson, Castlerock Environmental, Inc.	Tom Fillbeck, OUSD
Juan Garcia, Janus Corporation	Karen Hungerford, OUSD
Kelly Gogerty, Tri Span, Inc.	Jana Lichtenberger, OUSD

TOPIC: **AWARD OF BID NO. 587: ASPHALT REPLACEMENT – BASKETBALL COURTS AT CERRO VILLA MIDDLE SCHOOL**

DESCRIPTION: Bid No. 587 is for the replacement of the basketball court area at Cerro Villa Middle School.

**RECAPITULATION**

BIDDER	BID
<b>* J.B. Bostick Co., Inc.</b>	<b>\$186,809</b>
Universal Asphalt Co., Inc.	\$188,560
Hardy & Harper, Inc.	\$228,000

\* Low Bidder

Deferred Maintenance.....\$186,909  
14.00-6205-0-5640-0000-8110-380-410-000

FISCAL IMPACT: \$186,809

RECOMMENDATION: It is recommended that the Board of Education award Bid No. 587 for the asphalt replacement/basketball court area project at Cerro Villa Middle School to J.B. Bostick Co., Inc.

TOPIC: **PERSONNEL REPORT**

DESCRIPTION: All actions listed in the Personnel Report, representing a cost to the District, have been reviewed by the Business Department and have been assigned a budget number. Appropriate funds exist in all budget areas presented in this Personnel Report. Some items on the report represent the maximum amount that could be encumbered for that item, the actual expenditure may be less, and in no instance will the expenditure be more than the requested amount without an additional request being generated.

This report may require actions for extra pay projects, separation from service, short-term employment, leaves of absence, change of status, and new hires. All requests are generated by individuals, school sites, or various District departments.

All of the above requests have been processed in accordance with the rules and regulations of the Board of Education and the applicable legal requirements of the State of California and the Orange County Department of Education.

FISCAL IMPACT: Certificated: \$ 389,551  
Classified: \$ 249,529

RECOMMENDATION: It is recommended that the Board of Education approve the Personnel Report as presented.

CLASSIFIED AND CERTIFICATED PERSONNEL REPORT  
CERTIFICATED PERSONNEL

Name	Position	Administrative Unit	Schedule /Step/ Column	Rate	Eff. From	Date To	Comments
<b>EMPLOYMENT</b>							
Gwaltney, Christine	Teacher	Imperial/Salata		33,032	10/19/06	6/18/07	Temp
Lynch, James	Teacher	Villa Park HS/Steinle		54,547	10/30/06	6/15/07	Prob
Zientek, Michelle	Teacher	McPherson/Saraye		42,155	10/25/06	6/15/07	Temp
<b>ROP TEACHERS</b>							
Erikson, Tom	Teacher	ROP/Jones	Hourly Rate	29.53	10/23/06	1/24/07	
<b>CHANGE OF STATUS</b>							
Mate, Reka	Lib Media Spec	Educ Serv/Jones			10/23/06	6/15/07	Contract status 83% to 100%
<b>LEAVE OF ABSENCE</b>							
Bates, Marion	Teacher	Psych/Ferencz			10/13/06	11/21/06	Unpaid FMLA/Medical/w Benefits
O'Hare, Kindra	Teacher	West Orange/Lansman			11/3/06	11/21/06	Unpaid FMLA/Child Care/w benefits
O'Hare, Kindra	Teacher	West Orange/Lansman			11/27/06	6/15/07	Return Unpaid FMLA/Child Care/w benefits
Workman, Julie	Teacher	Sycamore/Reynolds			12/6/06	6/18/07	Unpaid LOA/Child Care/No Benefits
<b>SEPARATIONS</b>							
Conniff, Scott	Teacher	ROP/Reider				10/25/06	Resignation
Parker, William	Teacher	ROP/Reider				10/25/06	Resignation
Ringer, Gerald	Teacher	ROP/Reider				10/25/06	Resignation
Tuggle, Charles	Teacher	ROP/Reider				10/1/06	Resignation

Staff Responsibility:  
Ed Kissee, Assistant Superintendent-Human Resource

CLASSIFIED AND CERTIFICATED PERSONNEL REPORT  
CERTIFICATED PERSONNEL

	Name	Position	Administrative Unit	Schedule/Step/ Column	Rate	Eff. From	Date To	Comments	# of Units	Salary
	<b>EXTRA PAY</b>									
1	Adams, Roberta	Teacher	Prospect/Bruce	payment	110.00	12/6/06	12/7/06	Classroom Modernization	2	220.00
2	Agresti, Allison	Teacher	California/Ochoa	misc hrly rate	34.05	10/23/06	12/4/06	After School Reading Prog	7	238.35
3	Agresti, Allison	Teacher	California/Ochoa	misc hrly rate	34.05	10/26/06	12/7/06	After School Math Program	8	272.40
4	Alessi, Robert	Teacher	Villa Park HS/Steinle	misc hrly rate	34.05	9/1/06	9/8/06	Classroom Relocation	12	408.60
5	Alvarez, Allison	Teacher	Esplanade/Van Eck	misc hrly rate	34.05	10/17/06	4/30/07	SES Tutoring	40	1,362.00
6	Andersen, Maria	Teacher	El Modena HS/Reider	misc hrly rate	34.05	10/1/06	6/30/07	CAHSEE Instruction	87	2,962.35
7	Andress, Malia	Teacher	Portola/Reider	misc hrly rate	34.05	10/2/06	6/15/07	HS Exit Exam Tutor	125	4,256.25
8	Araujo, Barbara	Teacher	Yorba/Huerta	hourly rate	46.32	10/2/06	6/15/07	Extra Period	161	7,456.72
9	Arellanes, Lydia	Teacher	Spec Prog/Ochoa	misc hrly rate	34.05	9/21/06	9/21/06	EL Advisors Workshop	1	34.05
10	Arellano, Elsa	Teacher	Spec Prog/Ochoa	misc hrly rate	34.05	9/21/06	9/21/06	EL Advisors Workshop	1	34.05
11	Ashmore, Debbie	Teacher	Prospect/Bruce	payment	110.00	12/6/06	12/7/06	Classroom Modernization	2	220.00
12	Babayan, Anastasia	Teacher	Spec Prog/Ochoa	misc hrly rate	34.05	10/19/06	10/19/06	EL Advisors Workshop	1	34.05
13	Ballesteros, Amanda	Teacher	Olive/Van Eck	misc hrly rate	34.05	10/24/06	12/21/06	Tutoring	16.3	553.31
14	Baum, Susan	Teacher	California/Ochoa	misc hrly rate	34.05	10/26/06	12/7/06	After School Math Program	8	272.40
15	Bauman, Miranda	Teacher	California/Van Eck	misc hrly rate	34.05	8/31/06	8/31/06	Grade Level Prep	2	68.10
16	Bauman, Miranda	Teacher	California/Ochoa	misc hrly rate	34.05	10/23/06	12/4/06	After School Reading Prog	6	204.30
17	Beam, Kathleen	Teacher	Nohl Canyon/Van Eck	payment	110.00	10/5/06	10/5/06	Off-Track Training	1	110.00
18	Beaumont, Carol	Teacher	Prospect/Van Eck	misc hrly rate	34.05	10/17/06	4/30/07	SES Tutoring	75	2,553.75
19	Beaumont, Carol	Teacher	Prospect/Bruce	payment	110.00	12/6/06	12/7/06	Classroom Modernization	2	220.00
20	Bell, Shannon	Teacher	Fairhaven/Stoces	misc hrly rate	34.05	1/7/07	6/30/07	SST Facilitator	25	851.25
21	Bies, Kimberly	Teacher	Prospect/Bruce	payment	110.00	12/6/06	12/7/06	Classroom Modernization	2	220.00
22	Bishop, Lindsay	Teacher	Curriculum/Stoterau	payment	110.00	10/23/06	10/26/06	After School Workshop	1	110.00
23	Bishop, Lindsay	Teacher	Lampson/Ochoa	misc hrly rate	34.05	10/24/06	10/24/06	Parent Strategy Training	2	68.10
24	Bletterman, Christina	Teacher	Educ Serv/Morga	misc hrly rate	34.05	10/12/06	10/12/06	Off-Track Training	3	102.15
25	Bletterman, Christina	Teacher	Fairhaven/Van Eck	misc hrly rate	34.05	10/24/06	4/30/07	SES Tutoring	40	1,362.00
26	Bloom, Bryan	Teacher	Yorba/Van Eck	misc hrly rate	34.05	10/17/06	4/30/07	SES Tutoring	75	2,553.75
27	Blume, Julie	Teacher	Chapman Hills/Merkow	stipend	362.00	2/5/07	2/9/07	Outdoor Science School	1	362.00
28	Bogart, Eric	Teacher	Portola/Reider	misc hrly rate	34.05	10/9/06	6/15/07	HS Exit Exam Tutor	100	3,405.00
29	Borden, Sara	Teacher	Esplanade/Van Eck	misc hrly rate	34.05	10/17/06	4/30/07	SES Tutoring	75	2,553.75
30	Brown, Greg	Teacher	Handy/Van Eck	misc hrly rate	34.05	10/24/06	4/30/07	SES Tutoring	75	2,553.75
31	Brown, Greg	Teacher	Handy/Ochoa	misc hrly rate	34.05	12/11/06	12/11/06	ELD Grade Level Planning	3	102.15

Staff Responsibility:  
Ed Kisse, Assistant Superintendent-Human Resources



CLASSIFIED AND CERTIFICATED PERSONNEL REPORT  
CERTIFICATED PERSONNEL

	Name	Position	Administrative Unit	Schedule/Step/Column	Rate	Eff. From	Date To	Comments	# of Units	Salary
32	Bruce, Lee Ann	Teacher	Prospect/Van Eck	misc hrly rate	34.05	8/1/06	6/15/07	Reading Tutor	200	6,810.00
33	Burns, Cathleen	Teacher	Prospect/Bruce	payment	110.00	12/6/06	12/7/06	Classroom Modernization	2	220.00
34	Canto-Beaver, Misty	Teacher	Handy/Van Eck	misc hrly rate	34.05	10/24/06	4/30/07	SES Tutoring	75	2,553.75
35	Cardenas, Jennifer	Teacher	Spec Prog/Ochoa	payment	110.00	10/2/06	10/5/06	Off-Track Training	4	440.00
36	Carey, Kim	Teacher	Jordan/Ochoa	misc hrly rate	34.05	11/1/06	6/5/07	Tutoring	22	749.10
37	Cassis, Janet	Teacher	Riverdale/Rohlander	misc hrly rate	34.05	10/13/06	6/14/07	IEP Mtgs/Additional Trainings	100	3,405.00
38	Catron, Elizabeth	Teacher	Olive/Van Eck	misc hrly rate	34.05	10/24/06	12/21/06	Tutoring	16.3	553.31
39	Cecchi, Sharon	Teacher	Educ Serv/Morga	misc hrly rate	34.05	10/12/06	10/12/06	Off-Track Training	3	102.15
40	Chan, Daisy	Teacher	California/Ochoa	misc hrly rate	34.05	10/23/06	12/4/06	After School Reading Prog	7	238.35
41	Chaudhri, Surbhi	Teacher	Fairhaven/Van Eck	misc hrly rate	34.05	10/24/06	4/30/07	SES Tutoring	75	2,553.75
42	Ciaramitaro, Sharon	Teacher	Nohl Canyon/Van Eck	payment	110.00	10/5/06	10/5/06	Off-Track Training	1	110.00
43	Clagg, Cass	Teacher	Silverado/Eslick	misc hrly rate	34.05	9/30/06	6/30/06	Native American Tutor	40	1,362.00
44	Clark, Brenda	Teacher	Yorba/Reider	misc hrly rate	34.05	10/6/06	6/15/07	Tutor at Risk-Students	70	2,383.50
45	Clark, Kerry	Teacher	Handy/Van Eck	misc hrly rate	34.05	10/24/06	4/30/07	SES Tutoring	75	2,553.75
46	Clark, Kerry	Teacher	Handy/Ochoa	misc hrly rate	34.05	12/11/06	12/11/06	ELD Grade Level Planning	3	102.15
47	Clark, Sandra	Teacher	Curriculum/Stoterau	payment	110.00	10/23/06	10/26/06	After School Workshop	1	110.00
48	Clark, Scott	Teacher	Portola/Reider	misc hrly rate	34.05	10/2/06	6/15/07	HS Exit Exam Tutor	125	4,256.25
49	Cole, Cindy	Teacher	Handy/Ochoa	misc hrly rate	34.05	12/11/06	12/11/06	ELD Grade Level Planning	3	102.15
50	Collier, Sandra	Teacher	Portola/Reider	misc hrly rate	34.05	10/1/06	6/15/07	HS Exit Exam Tutor	100	3,405.00
51	Cooley, Steve	Teacher	Fairhaven/Rohlander	misc hrly rate	34.05	8/30/06	6/30/07	Tutor	60	2,043.00
52	Cooley, Steve	Teacher	Fairhaven/Van Eck	misc hrly rate	34.05	10/24/06	4/30/07	SES Tutoring	75	2,553.75
53	Cooper, Amber	Teacher	Handy/Van Eck	misc hrly rate	34.05	10/24/06	4/30/07	SES Tutoring	35	1,191.75
54	Cunning-Jones, Jane	Teacher	Lampson/Ochoa	misc hrly rate	34.05	10/23/06	6/30/07	ELL Tutoring	30	1,021.50
55	Curtis, Janet	Teacher	Spec Prog/Ochoa	misc hrly rate	34.05	9/21/06	9/21/06	EL Advisors Workshop	1	34.05
56	Dambach, Valerie	Teacher	Canyon HS/Reider	misc hrly rate	34.05	10/9/06	6/14/07	CAHSEE Instruction	35	1,191.75
57	Dao, Vicky	Teacher	Lampson/Ochoa	misc hrly rate	34.05	10/24/06	10/24/06	Parent Strategy Training	2	68.10
58	DeBrucky, Stephanie	Teacher	Olive/Van Eck	misc hrly rate	34.05	10/24/06	12/21/06	Tutoring	16.3	553.31
59	DeSales, Madge	Teacher	Lampson/Ochoa	misc hrly rate	34.05	10/24/06	10/24/06	Parent Strategy Training	2	68.10
60	Detling, Jack	Teacher	Running Springs/Bowde	stipend	362.00	10/16/06	10/20/06	Outdoor Science School	1	362.00
61	Dieppa, Laura	Teacher	Spec Prog/Ochoa	misc hrly rate	34.05	10/19/06	10/19/06	EL Advisors Workshop	1	34.05
62	Dubbs, Carol	Teacher	Spec Prog/Van Eck	misc hrly rate	34.05	10/1/06	4/30/07	Trainer for SES Tutors	10	340.50
63	Dubbs, Carol	Teacher	California/Ochoa	misc hrly rate	34.05	10/23/06	12/4/06	After School Reading Prog	3	102.15
64	Dubbs, Carol	Teacher	Califomia/Ochoa	misc hrly rate	34.05	10/23/06	12/7/06	After School Reading Prog	20	681.00
65	Eskander, Megan	Teacher	Lampson/Ochoa	misc hrly rate	34.05	10/24/06	10/24/06	Parent Strategy Training	2	68.10

Staff Responsibility:  
Ed Kisse, Assistant Superintendent-Human Resources

CLASSIFIED AND CERTIFICATED PERSONNEL REPORT  
CERTIFICATED PERSONNEL

	Name	Position	Administrative Unit	Schedule/Step/Column	Rate	Eff. From	Date To	Comments	# of Units	Salary
66	Espinosa, Elsie	Teacher	Spec Prog/Ochoa	misc hrly rate	34.05	9/21/06	9/21/06	EL Advisors Workshop	1	34.05
67	Evans, Joshua	Teacher	Spec Prog/Ochoa	misc hrly rate	34.05	9/21/06	9/21/06	EL Advisors Workshop	1	34.05
68	Everakes, Richard	Teacher	California/Ochoa	misc hrly rate	34.05	9/7/06	9/7/06	Grade Level Meeting	1	34.05
69	Everakes, Richard	Teacher	California/Ochoa	misc hrly rate	34.05	10/23/06	12/4/06	After School Reading Prog	7	238.35
70	Fessett, Tom	Teacher	California/Van Eck	misc hrly rate	34.05	10/24/06	4/30/07	SES Tutoring	75	2,553.75
71	Figueroa, Erin	Teacher	Palmyra/Smith	misc hrly rate	34.05	9/6/06	6/15/07	Intervention	30	1,021.50
72	Finorio, Paulina	Teacher	Curriculum/Stoterau	payment	110.00	10/21/06	10/21/06	Saturday Workshop	1	110.00
73	Fisher, Charles	Teacher	Orange HS/Johnson	hourly rate	89.96	9/7/06	6/15/07	Extra Period	178	16,013.59
74	Flores, Adriana	Teacher	Orange HS/Ochoa	misc hrly rate	34.05	8/30/06	6/14/07	Translation Services	15	510.75
75	Gallegly, Patricia	Teacher	California/Ochoa	misc hrly rate	34.05	10/23/06	12/4/06	After School Reading Prog	7	238.35
76	Glickman, Dorothy	Teacher	Spec Prog/Ochoa	misc hrly rate	34.05	9/21/06	9/21/06	EL Advisors Workshop	1	34.05
77	Gomez, Hilda	Teacher	Handy/Van Eck	misc hrly rate	34.05	10/24/06	4/30/07	SES Tutoring	75	2,553.75
78	Greenwald, Rochelle	Teacher	Lampson/Ochoa	misc hrly rate	34.05	10/24/06	10/24/06	Parent Strategy Training	2	68.10
79	Guenon, Judy	Teacher	Lampson/Ochoa	misc hrly rate	34.05	10/24/06	10/24/06	Parent Strategy Training	2	68.10
80	Hablani, Radha	Teacher	Lampson/Ochoa	misc hrly rate	34.05	10/24/06	10/24/06	Parent Strategy Training	2	68.10
81	Haitbrink, Barbara	Teacher	Spec Prog/Ochoa	misc hrly rate	34.05	10/19/06	10/19/06	EL Advisors Workshop	1	34.05
82	Hardage, Heidi	Teacher	Prospect/Bruce	payment	110.00	12/6/06	12/7/06	Classroom Modernization	2	220.00
83	Hawley, Jeff	Teacher	Anaheim Hills/Larson	stipend	362.00	12/11/06	12/15/06	Outdoor Science School	1	362.00
84	Heathman, Amy	Teacher	Handy/Van Eck	misc hrly rate	34.05	10/24/06	4/30/07	SES Tutoring	35	1,191.75
85	Hemerson, Shelli	Teacher	Running Springs/Bowde	stipend	362.00	10/16/06	10/20/06	Outdoor Science School	1	362.00
86	Herman, Steve	Teacher	Lampson/Ochoa	misc hrly rate	34.05	10/24/06	10/24/06	Parent Strategy Training	2	68.10
87	Hernandez, Amy	Teacher	Fletcher/Rohlander	misc hrly rate	34.05	10/4/06	6/14/07	Additional Training in SDC	60	2,043.00
88	Hines, Paul	Teacher	Spec Prog/Ochoa	payment	110.00	10/2/06	10/5/06	Off-Track Training	4	440.00
89	Hoang, Cindy	Teacher	Lampson/Ochoa	misc hrly rate	34.05	10/24/06	10/24/06	Parent Strategy Training	2	68.10
90	Hoffman, Ted	Teacher	California/Van Eck	misc hrly rate	34.05	10/24/06	4/30/07	SES Tutoring	75	2,553.75
91	Hughes, Anita	Teacher	Canyon Rim/Ochoa	misc hrly rate	34.05	10/25/06	12/15/06	Tutoring	5	170.25
92	Hughson, Sally	Teacher	Handy/Van Eck	misc hrly rate	34.05	10/24/06	4/30/07	SES Tutoring	35	1,191.75
93	Hughson, Sally	Teacher	Spec Prog/Ochoa	misc hrly rate	34.05	10/19/06	10/19/06	EL Advisors Workshop	1	34.05
94	Iadevaia, Debbie	Teacher	Esplanade/Van Eck	misc hrly rate	34.05	10/17/06	4/30/07	SES Tutoring	40	1,362.00
95	Ireland, Richland	Teacher	Panorama/Moore	stipend	362.00	10/9/06	10/13/06	Outdoor Science School	1	362.00
96	Ivory, Celeste	Teacher	Prospect/Bruce	payment	110.00	12/6/06	12/7/06	Classroom Modernization	2	220.00
97	Jett, Erin	Teacher	Lampson/Ochoa	misc hrly rate	34.05	10/23/06	6/30/07	ELL Tutoring	30	1,021.50
98	Kavanaugh, Clifford	Teacher	Olive/Van Eck	misc hrly rate	34.05	10/24/06	12/21/06	Tutoring	16.3	553.31
99	Kent, Suzanne	Teacher	Olive/Ochoa	misc hrly rate	34.05	10/24/06	12/21/06	Tutoring	16.3	553.31

Staff Responsibility:  
Ed Kisse, Assistant Superintendent-Human Resources

CLASSIFIED AND CERTIFICATED PERSONNEL REPORT  
CERTIFICATED PERSONNEL

	Name	Position	Administrative Unit	Schedule/Step/Column	Rate	Eff. From	Date To	Comments	# of Units	Salary
100	Kesoglou, Janet	Teacher	Lampson/Ochoa	misc hrly rate	34.05	10/24/06	10/24/06	Parent Strategy Training	2	68.10
101	Kim, Jennifer	Teacher	California/Van Eck	misc hrly rate	34.05	8/31/06	8/31/06	Grade Level Prep	2	68.10
102	Kleeb, Wendy	Teacher	Yorba/Reider	misc hrly rate	34.05	10/6/06	6/15/07	Tutor at Risk-Students	70	2,383.50
103	Koss, Christina	Teacher	Jordan/Ochoa	misc hrly rate	34.05	11/1/06	6/5/07	After School Tutoring	52	1,770.60
104	Kouri, Pam	Teacher	Spec Prog/Ochoa	misc hrly rate	34.05	10/19/06	10/19/06	EL Advisors Workshop	1	34.05
105	Krever, Jean	Teacher	Villa Park/Hausner	stipend	362.00	10/2/06	10/6/06	Outdoor Science School	1	362.00
106	Kvalstad, Nancy	Teacher	Fairhaven/Stoces	misc hrly rate	34.05	10/24/06	3/15/07	After School ELD Tutoring	30	1,021.50
107	Lambrakis, Christina	Teacher	Spec Prog/Ochoa	misc hrly rate	34.05	10/19/06	10/19/06	EL Advisors Workshop	1	34.05
108	Lantz, Leigh	Teacher	Prospect/Van Eck	misc hrly rate	34.05	10/17/06	4/30/07	SES Tutoring	40	1,362.00
109	Lantz, Leigh	Teacher	Prospect/Bruce	payment	110.00	12/6/06	12/7/06	Classroom Modernization	2	220.00
110	Lawson, Scott	Teacher	Canyon HS/Rohlander	misc hrly rate	34.05	10/16/06	6/30/07	Home Teaching	100	3,405.00
111	Lear, Charlene	Teacher	California/Ochoa	misc hrly rate	34.05	10/26/06	12/7/06	After School Math Program	8	272.40
112	Lear, Charlene	Teacher	California/Ochoa	misc hrly rate	34.05	10/23/06	12/7/06	After School Math Program	10	340.50
113	Lemberger, Joanne	Teacher	Fairhaven/Ochoa	misc hrly rate	34.05	9/18/06	9/21/06	Translation Services	8	272.40
114	Limburg, Carol	Teacher	Prospect/Bruce	payment	110.00	12/6/06	12/7/06	Classroom Modernization	2	220.00
115	Lopez, Kimberly	Teacher	Prospect/Bruce	payment	110.00	12/6/06	12/7/06	Classroom Modernization	2	220.00
116	Lopez, Shirley	Teacher	California/Van Eck	misc hrly rate	34.05	10/24/06	4/30/07	SES Tutoring	75	2,553.75
117	Luallen, Elizabeth	Teacher	Olive/Ochoa	misc hrly rate	34.05	10/24/06	12/21/06	Tutoring	2	68.10
118	Lukenbill, Amy	Teacher	Spec Prog/Ochoa	payment	110.00	10/2/06	10/5/06	Off-Track Training	4	440.00
119	Lundberg, Katleen	Teacher	California/Ochoa	misc hrly rate	34.05	9/7/06	9/7/06	Grade Level Meeting	1	34.05
120	Luongo, Ronald	Teacher	ROP/Jones	hourly rate	29.53	10/20/06	11/20/06	Extra Hours	25	738.25
121	Lyles, Diane	Teacher	Handy/Van Eck	misc hrly rate	34.05	11/6/06	12/5/06	EL Support	100	3,405.00
122	Mann, Abigail	Teacher	Handy/Van Eck	misc hrly rate	34.05	10/24/06	4/30/07	SES Tutoring	75	2,553.75
123	Maple, Tracy	Teacher	California/Ochoa	misc hrly rate	34.05	10/23/06	12/4/06	After School Reading Prog	7	238.35
124	Martel-Cody, Ann	Teacher	Fairhaven/Van Eck	misc hrly rate	34.05	10/24/06	4/30/07	SES Tutoring	35	1,191.75
125	Matson, Jeanne	Teacher	Prospect/Van Eck	misc hrly rate	34.05	10/17/06	4/30/07	SES Tutoring	40	1,362.00
126	Matson, Jeanne	Teacher	Prospect/Bruce	payment	110.00	12/6/06	12/7/06	Classroom Modernization	2	220.00
127	Maynard, Jan	Teacher	California/Ochoa	misc hrly rate	34.05	10/23/06	12/4/06	After School Reading Prog	7	238.35
128	McCullough, Mary	Teacher	Esplanade/Van Eck	misc hrly rate	34.05	10/17/06	4/30/07	SES Tutoring	40	1,362.00
129	McGowan, Jeanne	Teacher	Lampson/Ochoa	misc hrly rate	34.05	10/24/06	10/24/06	Parent Strategy Training	2	68.10
130	McGuire, Akira	Teacher	Prospect/Van Eck	misc hrly rate	34.05	10/17/06	4/30/07	SES Tutoring	75	2,553.75
131	McGuire, Akira	Teacher	Prospect/Bruce	payment	110.00	12/6/06	12/7/06	Classroom Modernization	2	220.00
132	McKenna, Nancy	Teacher	Fairhaven/Van Eck	misc hrly rate	34.05	10/24/06	4/30/07	SES Tutoring	40	1,362.00
133	Meehan, Shannon	Teacher	Running Springs/Stoter	misc hrly rate	34.05	10/2/06	10/21/06	Science Workshop Prep	4.5	153.23

Staff Responsibility:

Ed Kisse, Assistant Superintendent-Human Resources

CLASSIFIED AND CERTIFICATED PERSONNEL REPORT  
CERTIFICATED PERSONNEL

	Name	Position	Administrative Unit	Schedule/Step/Column	Rate	Eff. From	Date To	Comments	# of Units	Salary
134	Meyer, Elizabeth	Teacher	La Veta/Van Eck	misc hrly rate	34.05	9/11/06	9/18/06	Avenues Testing & Training	42	1,430.10
135	Miles, Lisa	Teacher	Fairhaven/Van Eck	misc hrly rate	34.05	10/24/06	4/30/07	SES Tutoring	75	2,553.75
136	Miller, Erin	Teacher	Canyon HS/Reider	misc hrly rate	34.05	10/9/06	6/14/07	CAHSEE Instruction	35	1,191.75
137	Miller, Greg	Teacher	Running Springs/Bowd	stipend	362.00	10/16/06	10/20/06	Outdoor Science School	1	362.00
138	Mips, Stephanie	Teacher	Curriculum/Stoterau	payment	110.00	10/21/06	10/21/06	Saturday Workshop	1	110.00
139	Miyamoto, Kristen	Teacher	Esplanade/Van Eck	misc hrly rate	34.05	10/17/06	4/30/07	SES Tutoring	75	2,553.75
140	Moberly, Gina	Teacher	Nohl Canyon/Van Eck	payment	110.00	10/5/06	10/5/06	Off-Track Training	1	110.00
141	Moore, Bradley	Teacher	California/Van Eck	misc hrly rate	34.05	10/24/06	4/30/07	SES Tutoring	75	2,553.75
142	Moore, De'anna	Teacher	Cres Inter/Van Eck	misc hrly rate	34.05	10/24/06	3/15/07	After School Tutoring	35	1,191.75
143	Moore, Michelle	Teacher	Spec Prog/Ochoa	misc hrly rate	34.05	9/21/06	9/21/06	EL Advisors Workshop	1	34.05
144	Morris-Williamson, De	Teacher	Anaheim Hills/Larson	stipend	362.00	12/11/06	12/15/06	Outdoor Science School	1	362.00
145	Newsom, Hailey	Teacher	Panorama/Moore	stipend	362.00	10/9/06	10/13/06	Outdoor Science School	1	362.00
146	Nghiem, Hieu	Teacher	Lampson/Ochoa	misc hrly rate	34.05	10/24/06	10/24/06	Parent Strategy Training	2	68.10
147	Nguyen, Vicky	Teacher	Lampson/Ochoa	misc hrly rate	34.05	10/24/06	10/24/06	Parent Strategy Training	2	68.10
148	Nicholson, Kristine	Teacher	Lampson/Ochoa	misc hrly rate	34.05	10/24/06	10/24/06	Parent Strategy Training	2	68.10
149	Nussbaum, William	Teacher	California/Van Eck	misc hrly rate	34.05	10/24/06	4/30/07	SES Tutoring	75	2,553.75
150	Ochoa, Brenda	Teacher	Orange HS/Ochoa	misc hrly rate	34.05	9/15/06	6/14/07	Translation Services	20	681.00
151	O'Connor, Richard	Teacher	Cres Inter/Eslick	misc hrly rate	34.05	10/20/06	6/30/07	Native American Tutor	20	681.00
152	O'Connor, Richard	Teacher	Cres Inter/Van Eck	misc hrly rate	34.05	10/24/06	3/15/07	After School Tutoring	20	681.00
153	Odle, Jeanette	Teacher	Cres Inter/Van Eck	misc hrly rate	34.05	10/24/06	3/15/07	After School Tutoring	35	1,191.75
154	Okamura, Lynn	Teacher	Running Springs/Stoterau	misc hrly rate	34.05	10/2/06	10/21/06	Science Workshop Prep	4.5	153.23
155	Opittek, Eugene	Teacher	Prospect/Bruce	payment	110.00	12/6/06	12/7/06	Classroom Modernization	2	220.00
156	Pacelli, Angelea	Teacher	Lampson/Ochoa	misc hrly rate	34.05	10/24/06	10/24/06	Parent Strategy Training	2	68.10
157	Parke, Laurie	Teacher	Educ Serv/Morga	misc hrly rate	34.05	10/12/06	10/12/06	Off-Track Training	3	102.15
158	Parrish, Karen	Teacher	Spec Prog/Ochoa	misc hrly rate	34.05	10/19/06	10/19/06	EL Advisors Workshop	1	34.05
159	Patterson, Michelle	Teacher	Educ Serv/Morga	misc hrly rate	34.05	10/12/06	10/12/06	Off-Track Training	3	102.15
160	Patterson, Michelle	Teacher	Running Springs/Bowd	stipend	362.00	10/16/06	10/20/06	Outdoor Science School	1	362.00
161	Paz, Danica	Teacher	Prospect/Van Eck	misc hrly rate	34.05	10/17/06	4/30/07	SES Tutoring	75	2,553.75
162	Paz, Danica	Teacher	Prospect/Bruce	payment	110.00	12/6/06	12/7/06	Classroom Modernization	2	220.00
163	Peterson, Lori	Teacher	Prospect/Bruce	payment	110.00	12/6/06	12/7/06	Classroom Modernization	2	220.00
164	Phibbs, Stephanie	Teacher	Prospect/Bruce	payment	110.00	12/6/06	12/7/06	Classroom Modernization	2	220.00
165	Praska, Scott	Teacher	Handy/Van Eck	misc hrly rate	34.05	10/24/06	4/30/07	SES Tutoring	75	2,553.75
166	Ralston, Jacqueline	Teacher	California/Ochoa	misc hrly rate	34.05	9/7/06	9/7/06	Grade Level Prep	3	102.15
167	Ramirez, Ray	Teacher	Fairhaven/Van Eck	misc hrly rate	34.05	10/24/06	4/30/07	SES Tutoring	75	2,553.75

Staff Responsibility:  
Ed Kisse, Assistant Superintendent-Human Resources

CLASSIFIED AND CERTIFICATED PERSONNEL REPORT  
CERTIFICATED PERSONNEL

	Name	Position	Administrative Unit	Schedule/Step/Column	Rate	Eff. From	Date To	Comments	# of Units	Salary
168	Rawalt, Deryk	Teacher	Curriculum/Stoterau	payment	110.00	10/23/06	10/26/06	After School Workshop	1	110.00
169	Rawalt, Deryk	Teacher	Lampson/Ochoa	misc hrly rate	34.05	10/24/06	10/24/06	Parent Strategy Training	2	68.10
170	Ray, Robin	Teacher	California/Van Eck	misc hrly rate	34.05	10/24/06	4/30/07	SES Tutoring	75	2,553.75
171	Reta, Cindy	Teacher	Curriculum/Stoterau	payment	110.00	10/21/06	10/21/06	Saturday Workshop	1	110.00
172	Reyes, Jose	Teacher	Canyon HS/Rohlander	misc hrly rate	34.05	10/9/06	6/30/07	Home Teaching	32	1,089.60
173	Ricupito, Jeff	Teacher	Yorba/Van Eck	misc hrly rate	34.05	10/17/06	4/30/07	SES Tutoring	75	2,553.75
174	Risse, Laura	Teacher	Fairhaven/Loetz	payment	110.00	8/23/06	8/24/06	Classroom Relocation	2	220.00
175	Rizzo, Karen	Teacher	Fairhaven/Van Eck	misc hrly rate	34.05	1/7/07	6/30/07	SST Facilitator	25	851.25
176	Roberts, Tara	Teacher	Lampson/Ochoa	misc hrly rate	34.05	10/24/06	10/24/06	Parent Strategy Training	2	68.10
177	Robinson, Bonnie	Teacher	Fairhaven/Van Eck	misc hrly rate	34.05	9/1/06	6/1/07	SES Facilitator	30	1,021.50
178	Robinson, Bonnie	Teacher	Spec Prog/Ochoa	misc hrly rate	34.05	10/19/06	10/19/06	EL Advisors Workshop	1	34.05
179	Rockwell, Pam	Teacher	Anaheim Hills/Stoterau	misc hrly rate	34.05	11/1/06	11/16/06	Prep Science Workshop	9	306.45
180	Rodriguez, Jennifer	Teacher	Lampson/Ochoa	misc hrly rate	34.05	10/24/06	10/24/06	Parent Strategy Training	2	68.10
181	Rohrig, Toni	Teacher	Lampson/Ochoa	misc hrly rate	34.05	10/24/06	10/24/06	Parent Strategy Training	2	68.10
182	Roland, Sharon	Teacher	Villa Park/Van Eck	payment	110.00	10/21/06	10/21/06	Saturday Workshop	1	110.00
183	Roney, Julie	Teacher	Curriculum/Stoterau	payment	110.00	10/23/06	10/26/06	After School Workshop	1	110.00
184	Ruark, Carolyn	Teacher	California/Van Eck	misc hrly rate	34.05	10/24/06	4/30/07	SES Tutoring	75	2,553.75
185	Ruiz, Patricia	Teacher	California/Ochoa	misc hrly rate	34.05	10/26/06	12/7/06	After School Math Program	8	272.40
186	Rutledge, Patricia	Teacher	Serrano/Van Eck	misc hrly rate	34.05	11/1/06	5/30/07	SIP Support	103	3,507.15
187	Salmond, Sharon	Teacher	Villa Park/Van Eck	payment	110.00	10/21/06	10/21/06	Saturday Workshop	1	110.00
188	Saltikov, Olay	Teacher	Esplanade/Van Eck	misc hrly rate	34.05	10/17/06	4/30/07	SES Tutoring	40	1,362.00
189	Sarkissian, Sarah	Teacher	Spec Prog/Ochoa	misc hrly rate	34.05	9/21/06	9/21/06	EL Advisors Workshop	1	34.05
190	Savela, Eva	Teacher	Lampson/Ochoa	misc hrly rate	34.05	10/24/06	10/24/06	Parent Strategy Training	2	68.10
191	Schlossnagle, Gary	Teacher	El Modena HS/Reider	misc hrly rate	34.05	10/1/06	6/30/07	CAHSEE Instruction	78	2,655.90
192	Schmuhl, Victoria	Teacher	Serrano/Stoterau	misc hrly rate	34.05	11/15/06	11/28/06	Science Workshop Prep	9	306.45
193	Schumacher, Ava	Teacher	Spec Prog/Ochoa	misc hrly rate	34.05	9/21/06	9/21/06	EL Advisors Workshop	1	34.05
194	Scollick, Susan	Teacher	Curriculum/Stoterau	payment	110.00	10/23/06	10/26/06	After School Workshop	1	110.00
195	Scott, Margaret	Teacher	Esplanade/Van Eck	misc hrly rate	34.05	10/17/06	4/30/07	SES Tutoring	40	1,362.00
196	Scott-Griffith, Christie	Teacher	Esplanade/Van Eck	misc hrly rate	34.05	8/29/06	6/16/07	Leadership Team Meetings	20	681.00
197	Scott-Griffith, Christie	Teacher	Esplanade/Van Eck	misc hrly rate	34.05	10/17/06	4/30/07	SES Tutoring	40	1,362.00
198	Shaw, Katherine	Teacher	Spec Prog/Ochoa	misc hrly rate	34.05	10/19/06	10/19/06	EL Advisors Workshop	1	34.05
199	Shipman, Lisa	Teacher	Fairhaven/Van Eck	misc hrly rate	34.05	10/24/06	4/30/07	SES Tutoring	75	2,553.75
200	Silva, Marianne	Teacher	Olive/Van Eck	misc hrly rate	34.05	10/24/06	12/21/06	Tutoring	16.3	553.31
201	Smallman, James	Teacher	El Modena HS/Reider	misc hrly rate	34.05	10/1/06	6/30/07	CAHSEE Instruction	18	612.90

Staff Responsibility:  
• Ed Kisse, Assistant Superintendent-Human Resources

CLASSIFIED AND CERTIFICATED PERSONNEL REPORT  
CERTIFICATED PERSONNEL

	Name	Position	Administrative Unit	Schedule/Step/Column	Rate	Eff. From	Date To	Comments	# of Units	Salary
202	Smith, Julie	Teacher	Esplanade/Van Eck	misc hrly rate	34.05	10/17/06	4/30/07	SES Tutoring	40	1,362.00
203	Snider, Keith	Teacher	Esplanade/Van Eck	misc hrly rate	34.05	10/17/06	4/30/07	SES Tutoring	75	2,553.75
204	Snyder, Christopher	Teacher	El Modena HS/Reider	misc hrly rate	34.05	10/1/06	6/30/07	CAHSEE Instruction	63	2,145.15
205	Snyder, Gary	Teacher	Yorba/Huerta	hourly rate	48.43	10/2/06	6/15/07	Extra Period	161	7,797.39
206	Snyder, Gary	Teacher	Yorba/Van Eck	misc hrly rate	34.05	10/17/06	4/30/07	SES Tutoring	75	2,553.75
207	Stalter, Kelsey	Teacher	Lampson/Ochoa	misc hrly rate	34.05	10/24/06	10/24/06	Parent Strategy Training	2	68.10
208	Stephen, Linda	Teacher	Lampson/Ochoa	misc hrly rate	34.05	10/24/06	10/24/06	Parent Strategy Training	2	68.10
209	Stevens, Leslie	Teacher	Prospect/Bruce	payment	110.00	12/6/06	12/7/06	Classroom Modernization	2	220.00
210	Stilwell, Courtney	Teacher	Villa Park/Hausner	stipend	362.00	10/2/06	10/6/06	Outdoor Science School	1	362.00
211	Stucker, Linda	Teacher	Lampson/Ochoa	misc hrly rate	34.05	10/23/06	6/30/07	ELL Tutoring	30	1,021.50
212	Swedenborg, Amber	Teacher	Lampson/Ochoa	misc hrly rate	34.05	10/24/06	10/24/06	Parent Strategy Training	2	68.10
213	Swedenborg, Amber	Teacher	Lampson/Ochoa	misc hrly rate	34.05	10/23/06	6/30/07	ELL Tutoring	30	1,021.50
214	Tanioka, Chris	Teacher	Anaheim Hills/Larson	stipend	362.00	12/11/06	12/15/06	Outdoor Science School	1	362.00
215	Tatch, Amber	Teacher	Handy/Van Eck	misc hrly rate	34.05	10/24/06	4/30/07	SES Tutoring	35	1,191.75
216	Thompson, Jodi	Teacher	Lampson/Ochoa	misc hrly rate	34.05	10/24/06	10/24/06	Parent Strategy Training	2	68.10
217	Tippets, Rebekah	Teacher	Esplanade/Van Eck	misc hrly rate	34.05	10/17/06	4/30/07	SES Tutoring	40	1,362.00
218	Topor, Sarah	Teacher	Spec Prog/Ochoa	misc hrly rate	34.05	10/19/06	10/19/06	EL Advisors Workshop	1	34.05
219	Venckus, Michelle	Teacher	Cres Inter/Eslick	misc hrly rate	34.05	10/20/06	6/30/07	Native American Tutor	20	681.00
220	Venckus, Michelle	Teacher	Cres Inter/Van Eck	misc hrly rate	34.05	10/24/06	3/15/07	After School Tutoring	20	681.00
221	Verdone, Pam	Teacher	Anaheim Hills/Stoterau	misc hrly rate	34.05	11/1/06	11/16/06	Prep Science Workshop	9	306.45
222	Visconti, Jennifer	Teacher	Orange HS/Reider	misc hrly rate	34.05	9/18/06	6/14/07	Tutor	130	4,426.50
223	Walter, Joyce	Teacher	SpEd/Rohlander	misc hrly rate	34.05	8/31/06	12/1/06	Home Teaching	100	3,405.00
224	Ward, Elizabeth	Teacher	El Modena HS/Reider	misc hrly rate	34.05	10/1/06	6/30/07	CAHSEE Instruction	78	2,655.90
225	Wartenberg, Christina	Teacher	Fairhaven/Stoces	misc hrly rate	34.05	10/24/06	3/15/07	ELD Tutoring	30	1,021.50
226	Way, Connie	Teacher	Nohl Canyon/Van Eck	payment	110.00	10/5/06	10/5/06	Off-Track Training	1	110.00
227	Whistler, Sandra	Teacher	Fairhaven/Van Eck	misc hrly rate	34.05	9/24/06	6/30/07	Read 180 Intervention	148	5,039.40
228	Widdall, Ken	Teacher	El Modena HS/Reider	misc hrly rate	34.05	10/1/06	6/30/07	CAHSEE Instruction	58	1,974.90
229	Widdall, Ken	Teacher	Spec Prog/Ochoa	misc hrly rate	34.05	9/21/06	9/21/06	EL Advisors Workshop	1	34.05
230	Williams, Danna	Teacher	Spec Prog/Ochoa	misc hrly rate	34.05	10/19/06	10/19/06	EL Advisors Workshop	1	34.05
231	Williams, Scott	Teacher	Villa Park/Hausner	stipend	362.00	10/2/06	10/6/06	Outdoor Science School	1	362.00
232	Williams, Scott	Teacher	Villa Park/Van Eck	payment	110.00	10/21/06	10/21/06	Saturday Workshop	1	110.00
233	Williams, Terry	Teacher	Yorba/Reider	misc hrly rate	34.05	10/6/06	6/15/07	Tutor at Risk-Students	70	2,383.50
234	Wong, Jennifer	Teacher	Cerro Villa/Sterling	detention rate	23.07	10/24/06	6/12/07	After School Detention	32	738.24
235	Wood, Brent	Teacher	El Modena HS/Van Eck	misc hrly rate	34.05	10/1/06	6/30/07	9th Gr Initiative Support	124	4,222.20

CLASSIFIED AND CERTIFICATED PERSONNEL REPORT  
CERTIFICATED PERSONNEL

	Name	Position	Administrative Unit	Schedule/Step/Column	Rate	Eff. From	Date To	Comments	# of Units	Salary
236	Yip, Chanmony	Teacher	Handy/Van Eck	misc hrly rate	34.05	10/24/06	4/30/07	SES Tutoring	75	2,553.75
237	Zedek, Ilene	Teacher	Prospect/Van Eck	misc hrly rate	34.05	10/17/06	4/30/07	SES Tutoring	75	2,553.75
238	Zedek, Ilene	Teacher	Prospect/Bruce	payment	110.00	12/6/06	12/7/06	Classroom Modernization	2	220.00

Staff Responsibility:  
Ed Kisse, Assistant Superintendent-Human Resources

CLASSIFIED AND CERTIFICATED PERSONNEL REPORT  
CLASSIFIED PERSONNEL

Name	Position	Administrative Unit	Range/Step	Rate	Eff. From	Eff. To	Comments
<b>EMPLOYMENT</b>							
<b>Hourly</b>							
Bauland, Caleb	Inst. Asst.-SDC/ El Modena HS	Special Education/ Rohlander	26/1 (53)	\$ 12.63	10/16/2006		New position
Bernardo, Nicholas	Technology Assistant/ Palmyra ES	Palmyra ES/ Smith	28/1 (53)	\$ 13.30	10/23/2006		Replacement for D. DeGrave
Contreras, Antoinette	CDC Aide/ Child Development Center	School Age Care/ Stephens	22/1 (53)	\$ 11.48	10/30/2006		Replacement for C. Montoya
Ferrer, Francisco	Custodian/ Maintnenance & Operations	Maintenance & Operations/ Torres	31/1 (53)	\$ 14.30	10/11/2006		Replacement for J. Kozitsky
Garcia, Jennifer	Child Care Aide/ Riverdale ES	School Age Care/ Stephens	14/1 (53)	\$ 9.42	10/11/2006		Replacement for C. Gomez
Hill, Grace	Instructional Assistant/ Chapman Hills ES	Chapman Hills ES/ Merkow	24/1 (53)	\$ 12.03	11/2/2006		Replacement for V. Hogg
Jerez, Vanessa	Child Care Aide/ West Orange ES	School Age Care/ Stephens	14/1 (53)	\$ 9.42	10/11/2006		Replacement for S. Esparza
La Rochelle, Katie	Child Care Aide/ Running Springs ES	School Age Care/ Stephens	14/1 (53)	\$ 9.42	10/16/2006		Location Reassignment
Masi, Constance	Inst. Asst.-SDC/ Linda Visa ES	Special Education/ Rohlander	26/1 (51)	\$ 12.03	10/17/2006		Replacement for M. Hubbard
Mayes, Jeffrey	Inst. Asst.-RSP/ El Modena HS	Special Education/ Rohlander	26/1 (53)	\$ 12.63	10/2/2006		Replacement for M. Mahan
Molina, Jennifer	Inst. Asst.-Pre K/ Chapman Hills ES	Special Education/ Rohlander	26/1 (53)	\$ 12.63	10/24/2006		Replacement for J. Brewington
Moore, Travis	Child Care Aide/ Running Springs ES	School Age Care/ Stephens	14/1 (53)	\$ 9.42	10/11/2006		Replacement for T. Talavou
Navarro, Jenny	Inst. Asst.-Pre K/ Riverdale ES	Special Education/ Rohlander	26/1 (53)	\$ 12.63	10/31/2006		Replacement for J. Santana
Renteria, Jose	Child Care Aide/ Linda Vista ES	School Age Care/ Stephens	14/1 (53)	\$ 9.42	10/11/2006		Location Reassignment
Riddle, Amy	Inst. Asst.-RSP/ Richland Cont. HS	Special Education/ Rohlander	26/1 (53)	\$ 12.63	10/20/2006		Replacement for B. Baker
Robinson, Blake	Inst. Asst.-SDC/ Canyon Hills TMR	Special Education/ Rohlander	28/1 (53)	\$ 13.30	11/2/2006		Replacement for B. Lentz
Saldivar, Luisa	School Community Assistant/ Esplanade ES	Esplanade ES/ Anderson	24/1 (53)	\$ 12.03	10/16/2006		Replacement for J. Llamas
Shimabukuro, Leah	Inst. Asst.-Pre K/ Fairhaven ES	Special Education/ Rohlander	26/1 (53)	\$ 12.63	10/27/2006		Replacement for V. Sanchez

Staff Responsibility: Ed Kissee  
Assistant Superintendent - Human Resources



CLASSIFIED AND CERTIFICATED PERSONNEL REPORT  
CLASSIFIED PERSONNEL

Name	Position	Administrative Unit	Range/Step	Rate	Eff. From	Eff. To	Comments
<b>Hourly-Continued</b>							
Sly, Ryan	Inst. Asst.-RSP/ Villa Park HS	Special Education/ Rohlander	26/1 (53)	\$ 12.63	10/25/2006		Replacement for E. Derham
Tisthammer, Robert	Campus Security Officer/ Canyon HS	Canyon HS/ Duncan	19/1 (53)	\$ 10.61	10/25/2006		Replacement for E. Klein
Wagner, Ryan	Inst. Asst.-Health Services/ El Modena HS	Special Education/ Rohlander	28/1 (53)	\$ 13.30	10/19/2006		Replacement for M. Angel
Zamarripa, Victoria	Inst. Asst.-Pre K/ Riverdale ES	Special Education/ Rohlander	26/1 (53)	\$ 12.63	10/30/2006		Replacement for L. Koopman
<b>Monthly</b>							
Cobb, Mickey	HVAC Technician/ Maintenance & Operations	Maintenance & Operations/ Torres	46/1 (50)	\$ 3,384.00	10/18/2006		Replacement for A. Durrett
<b>SHORT TERM EMPLOYMENT</b>							
Becker, Nell	AVID Tutor/ Orange HS	Orange HS/ Johnson	Per Hour	\$ 10.00	10/5/2006	6/14/2007	Not to Exceed \$2,000.00
De La Vega, Mark	PIT Tech/ El Modena HS	El Modena HS/ Bailey	Per Hour	\$ 50.00	8/31/2006	6/30/2007	Not to Exceed \$3,500.00
Fallon, William	Announcer/ Kelly Stadium	Athletics/ Jones	Per Game	\$ 38.50	9/1/2006	10/31/2006	Not to Exceed \$770.00
Gilliard, Kenneth	Music Accompanist/ Orange HS	Orange HS/ Johnson	Per Hour	\$ 10.00	9/1/2006	6/15/2007	Not to Exceed \$5,000.00
Gonzales, Francisco	Film Camera Operator/ Orange HS	Orange HS/ Jones	Per Game	\$ 60.00	9/1/2006	12/31/2007	Not to Exceed \$1,200.00
Hale, Matthew	Film Camera Operator/ Kelly Stadium	Kelly Stadium/ Jones	Per Game	\$ 60.00	9/7/2006	12/15/2006	Not to Exceed \$1,200.00
Hsieh, Charlotte	Accompanist/ Villa Park HS	Villa Park HS/ Steinle	Per Month	\$ 900.00	10/18/2006	6/14/2007	Not to Exceed \$9,000.00
Kibby, Charles	Film Video/ Kelly Stadium	Athletics/ Jones	Per Game	\$ 60.00	9/8/2006	11/30/2006	Not to Exceed \$1,200.00
Mount, Ken	Announcer/ Kelly Stadium	Athletics/ Jones	Per Game	\$ 38.50	9/8/2006	11/30/2006	Not to Exceed \$770.00
Olivares, Alex	AVID Tutor/ Cerro Villa MS	Cerro Villa MS/ Sterling	Per Hour	\$ 10.00	6/26/2006	6/7/2007	Not to Exceed \$744.00
Senne, Roger	Game Timer/ Kelly Stadium	Athletics/ Jones	Per Game	\$ 30.50	9/7/2006	11/10/2006	Not to Exceed \$610.00

Staff Responsibility: Ed Kissee  
Assistant Superintendent - Human Resources

CLASSIFIED AND CERTIFICATED PERSONNEL REPORT  
CLASSIFIED PERSONNEL

Name	Position	Administrative Unit	Range/Step	Rate	Eff. From	Eff. To	Comments
<b>SHORT TERM EMPLOYMENT-Continued</b>							
Swanson, Kathryn	Vision Assistant/ Various	Special Education/ Rohlander	Per Hour	\$ 15.00	7/1/2006	6/30/2007	Not to Exceed \$9,000.00
Tran, Jenny	AVID Tutor/ Canyon HS	Canyon HS/ Duncan	Per Hour	\$ 11.00	9/15/2006	6/1/2007	Not to Exceed \$500.00
Vaughter, Jordan	AVID Tutor/ El Modena HS	El Modena HS/ Bailey	Per Hour	\$ 10.00	10/24/2006	6/30/2007	Not to Exceed \$2,500.00
Williams, Preston	Fire Science/ ROP	Career Education Center/ Snyder	Per Hour	\$ 11.00	9/1/2006	1/24/2007	Not to Exceed \$1,650.00

Staff Responsibility: Ed Kissee  
Assistant Superintendent - Human Resources

CLASSIFIED AND CERTIFICATED PERSONNEL REPORT  
CLASSIFIED PERSONNEL

Name	From	To	Eff. From	Date To	Comments
<b>EMPLOYMENT CHANGE</b>					
<b>Hourly</b>					
Angel, Michael	Instructional Assistant, Sp Ed Health Services 28/1 (53) 9.5 mos/3.5 hrs	Campus Security Officer El Modena HS 19/1 (51) 9.5 mos/7.5 hrs	10/9/2006		Transfer, replacing D. Coates
Bailey, Susana	School Community Assistant West Orange ES 24/3 (53) 10 mos/3.5 hrs	School Community Assistant West Orange ES 24/3 (53) 10 mos/3.9 hrs	8/10/2006		Increase in work hours
Dodd, Noelle	LOA	CDC Aide Child Development Center 22/5 (51) 12 mos/3.8 hrs	9/1/2006		Return from leave of absence
Dominquez, Adrianne	Child Care Aide Fletcher ES 14/1 (53) 12 mos/3.5 hrs	CDC Aide Child Development Center 22/1 (53) 12 mos/3.8 hrs	10/24/2006		Promotion, replacing A. Apodaca
Dyson, Jennifer	Instructional Assistant, Sp Ed Canyon Hills TMR 28/6 (51) 9.5 mos/6 hrs	Instructional Assistant, Sp Ed Canyon Hills TMR 28/6 (51) 9.5 mos/7 hrs	11/16/2006		Increase in work hours
Garcia-Cuenca, Maria	Sr. Central Kitchen FS Asst. Crescent Intermediate 24/1 (53) 9.5 mos/3.5 hrs	Sr. Central Kitchen FS Asst. Crescent Intermediate 24/1 (51) 9.5 mos/8 hrs	10/25/2006		Increase in work hours/ replacing S. Hurtado-Contreras
La Rochelle, Kathleen	Instructional Assistant, Sp Ed Special Programs 26/6 (51) 9.5 mos/6.5 hrs	Instructional Assistant, Sp Ed Special Programs 26/6 (51) 9.5 mos/7 hrs	10/16/2006		Increase in work hours
Mayes, Nicholas	Instructional Assistant, Sp Ed Canyon Hills TMR 28/1 (53) 9.5 mos/3.5 hrs	Instructional Assistant, Sp Ed Canyon Hills TMR 28/1 (51) 9.5 mos/6.5 hrs	10/18/2006		Transfer, increase in work hours
Offenstein, Andrina	Technology Assistant Canyon Hills TMR 28/6 (53) + 10% 9.5 mos/3.5 hrs	Technology Assistant Canyon Hills TMR 28/6 (51) + 10% 9.5 mos/6 hrs	10/16/2006		Increase in work hours

Staff Responsibility: Ed Kissee  
Assistant Superintendent - Human Resources

CLASSIFIED AND CERTIFICATED PERSONNEL REPORT  
CLASSIFIED PERSONNEL

Name	From	To	Eff. From	Date To	Comments
<b>Hourly-Continued</b>					
Tremaine, Misty	Technology Assistant	Technology Assistant	9/1/2006		Reductions in work hours
	Lampson ES	Lampson ES			
	28/1 (53)	28/1 (53)			
	9.5 mos/3.5 hrs	9.5 mos/3 hrs			
<b>Monthly</b>					
Coutts, Stephen	Sprinkler Repair Technician	Plumber	8/7/2006		Replacing F. Flores, return from layoff
	Maintenance & Operations	Maintenance & Operations			
	40/6 (50) + 10%	46/6 (50) + 10%			
	12 mos/8 hrs	12 mos/8 hrs			
Hui, Emy	Executive Secretary I	LOA	11/1/2006		Unpaid Leave of Absence
	Information Services				
	31/6 (83)				
	12 mos/ 8hrs.				
Kozitsky, Jeff	Custodian	Custodian	10/25/2006		Transfer, increase in work hours, replacing M. Alarcon
	McPherson Magnet	McPherson Magnet			
	31/6 (51)	31/6 (50) + 2%			
	12 mos/3.75 hrs	12 mos/8 hrs			
Milonas, Teresa	Senior Secretary	Executive Secretary I	11/6/2006		Promotion, new position
	Curriculum Secondary	Educational Services			
	35/6 (50)	31/1 (83)			
	12 mos/8 hrs	12 mos/8 hrs			
Muñiz, Jesus	Sr Gardener/Groundskeeper	Sprinkler Repair Technician	8/7/2006		Transfer, replacing S. Coutts
	Maintenance & Operations	Maintenance & Operations			
	38/6 (50) + 10%	40/6 (50) + 10%			
	12 mos/8 hrs	12 mos/8 hrs			
Roman, Trinidad	Custodian	Head Custodian	10/23/2006		Promotion, replacing P. Allen
	District Office	Canyon Hills TMR			
	31/6 (50)	33/6 (50)			
	12 mos/8 hrs	12 mos/8 hrs			
Short, Kathleen	Technology Assistant	Library Media Tech II, Elementary	10/23/2006		Promotion, replacing A. Perez
	Anaheim Hills ES	Anaheim Hills ES			
	28/6 (53)	32/5 (50)			
	9.5 mos/3 hrs	10 mos/7 hrs			

Staff Responsibility: Ed Kissee  
Assistant Superintendent - Human Resources

CLASSIFIED AND CERTIFICATED PERSONNEL REPORT  
CLASSIFIED PERSONNEL

Name	Position	Administrative Unit	Schedule/ Step/Column	Rate	Eff. From	Date To	Comments
<b>SEPARATIONS</b>							
Ausmus II, John	Campus Security Officer	Orange HS			10/20/2006		Resignation
Kline, Donna	School Office Manager	Imperial ES			12/15/2006		Retirement
Lentz, Bryan	Instructional Assistant	Special Education			9/28/2006		Resignation
Rosales, Mavel	Instructional Assistant	Special Education			10/27/2006		Resignation

Staff Responsibility: Ed Kissee  
Assistant Superintendent - Human Resources

CLASSIFIED AND CERTIFICATED PERSONNEL REPORT  
CLASSIFIED PERSONNEL

Name	Position	Administrative Unit	Schedule/ Step/ Column	Rate	Eff. From	Date To	Comments	# of Units	Salary
<b>EXTRA PAY PROJECT-COACHING STIPENDS</b>									
Douglas, David	Walk-On Coach	Canyon HS/Duncan	Stipend	2,000.00	8/1/06	11/30/06	JV Girls' Tennis/B. Paid	1	2,000.00
Finnegan, Casey	Walk-On Coach	El Modena HS/Bailey	Stipend	1,500.00	8/31/06	11/14/06	Boys' Waterpolo/B. Pd.	1	1,500.00
Dunbar, Daniel	Walk-On Coach	El Modena HS/Bailey	Stipend	2,000.00	11/1/06	2/28/07	JV Girls' Soccer/B. Pd.	1	2,000.00
Arreola, Jason	Walk-On Coach	Orange HS/Johnson	Stipend	2,231.00	11/1/06	2/28/07	F/S Boys' Wrestling	1	2,231.00
Manalo, Therese	Walk-On Coach	Orange HS/Johnson	Stipend	2,201.00	9/1/06	6/30/07	Girls' Dance Director	1	2,201.00
Whipkey, Elizabeth	Walk-On Coach	Villa Park HS/Steinle	Stipend	250.00	9/15/06	1/30/07	Var. Girls' Softball/B. Pd.	1	250.00
Groom, Nicole	Walk-On Coach	Villa Park HS/Steinle	Stipend	250.00	9/15/06	1/30/07	VA. Girls' Softball/B. Pd.	1	250.00
Ramirez, Jose	Walk-On Coach	Villa Park HS/Steinle	Stipend	2,200.00	9/1/06	11/17/06	Girls' Soccer/B. Paid	1	2,200.00
Nazzareno, Paul	Walk-On Coach	Villa Park HS/Steinle	Stipend	2,320.00	2/1/07	5/31/07	JV. Girls' Softball	1	2,320.00
Miller, Joseph	Walk-On Coach	Villa Park HS/Steinle	Stipend	2,226.00	2/1/07	5/31/07	F/S Girls' Softball	1	2,226.00
Yadon, Doug	Walk-On Coach	Villa Park HS/Steinle	Stipend	2,499.00	11/1/06	2/28/07	VA. Boys' Wrestling	1	2,499.00
Aguilar, David	Walk-On Coach	Villa Park HS/Steinle	Stipend	2,499.00	11/1/06	2/28/07	V.A. Boys' Wrestling	1	2,499.00
Sear, Andrew	Walk-On Coach	Villa Park HS/Steinle	Stipend	2,231.00	11/1/06	2/28/07	F/S Boys' Wrestling	1	2,231.00

Staff Responsibility: Ed Kisse, Assistant Superintendent, Human Resources

TOPIC:

**CLASSIFIED POSITION RANGE ADJUSTMENT:  
CAMPUS SECURITY OFFICER**

DESCRIPTION:

The position, Campus Security Officer, is assigned duties related to the control of student behavior on secondary school campuses. Currently, the sixteen incumbents in this classification provide security at seven District campuses. The positions are both full and part-time. An external study of identical positions in comparable Orange County unified school districts was conducted. It was determined that an upward adjustment in salary from range 19 to range 25 is merited to bring the position in line with the compensation for similar positions in comparison districts. Such an adjustment would provide the District with the ability to recruit and retain qualified candidates in order to improve and increase the safety and security of secondary school campuses.

FISCAL IMPACT:

The amount required for this upgrade would come from the Safety Grant and is accounted for in the 2006-07 District budget. It is estimated that this upgrade will be cost-neutral with regards to the unrestricted general fund based upon the funding source for the upgrade.

RECOMMENDATION:

It is recommended that the pay range for Campus Security Officer receive an upward adjustment from range 19 to range 25 effective upon Board approval.

**TOPIC: MAINTENANCE/OPERATIONS AND FACILITIES/PLANNING  
DEPARTMENT REORGANIZATION**

**DESCRIPTION:** Board Policy 2100 requires that the Superintendent organize the District administrative staff in a manner that best supports the educational program through efficient operations, effective communications and direct assistance to schools. Based upon this responsibility, the Superintendent recommends that the Maintenance/Operations and Facilities/Planning Departments be reorganized as described below and detailed in the attached organizational charts, effective December 1, 2006.

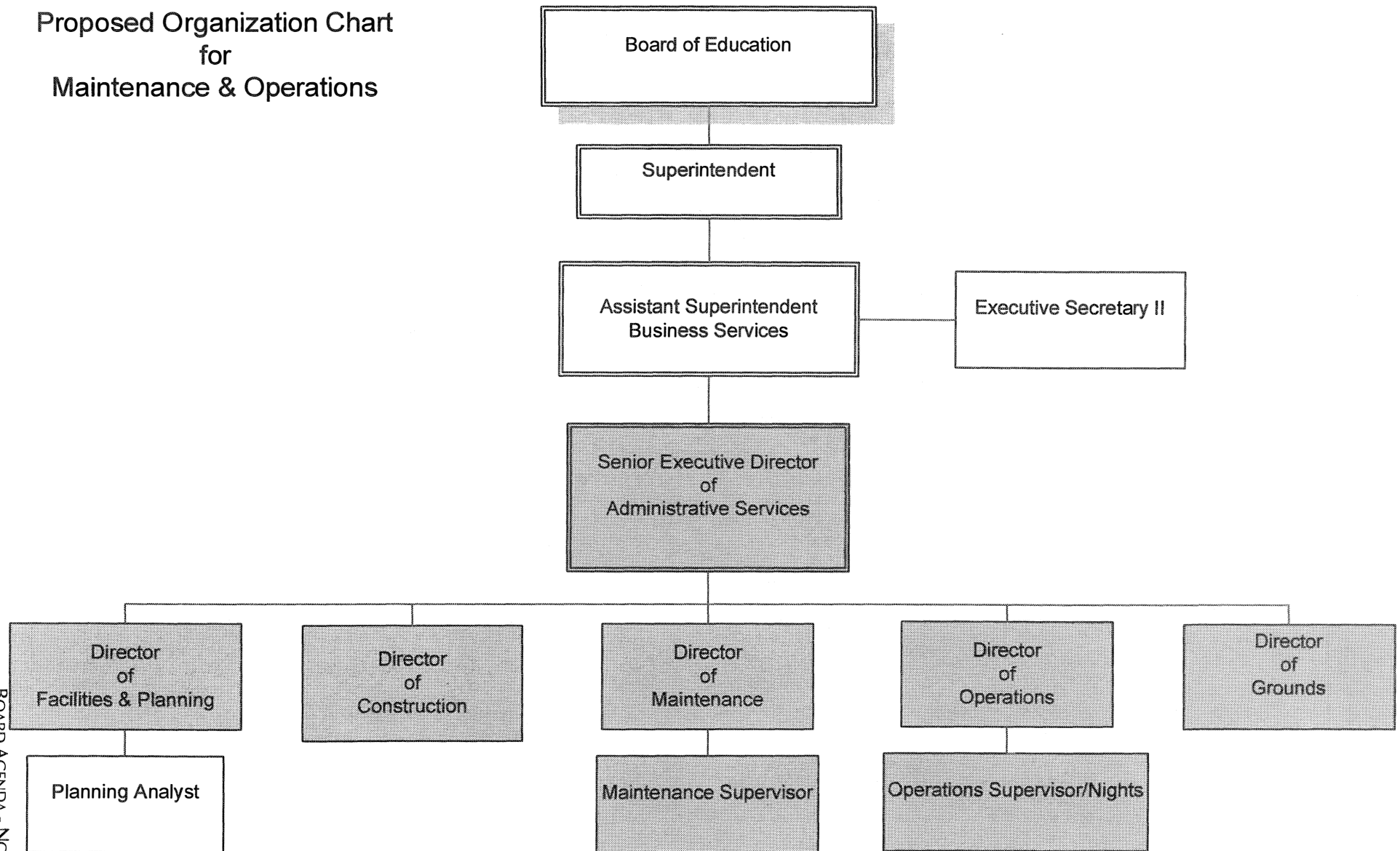
**FISCAL IMPACT:** It is estimated that there will be a savings to the unrestricted general fund of approximately \$12,337 based upon the substance and funding of the reorganization.

**RECOMMENDATION:** It is recommended that the Board of Education:

- Change the position title Executive Director, Facilities and Planning to Senior Executive Director, Administrative Services.
- By resolution, abolish the position entitled Director, Maintenance and Operations (salary range L111).
- Split the responsibilities of the current position Operations Manager into two positions, one covering the area of operations and the other covering the responsibility of grounds.
- Reclassify the positions of Operations Manager (salary range L86) into Director, Operations (salary range L87) and Director, Grounds (salary range L87).
- Assign the incumbent Operations Manager the position of Director, Grounds.
- Assign the incumbent Director, Maintenance and Operations to the position of Director, Operations.
- Reclassify the position Maintenance Manager (salary range L86) to Director, Maintenance (salary range L87).
- Reclassify the position Director, Construction (salary range L86) to salary range L87.
- Eliminate the current open position entitled Senior Planning Analyst (salary range L67).
- Add the former position of Director, Facilities and Planning at salary range L103.
- Change the position title Maintenance Supervisor, Nights to Operations Supervisor, Nights.
- Reclassify the position Supervisor, Operations (salary range L60) to Supervisor, Maintenance (salary range L66).

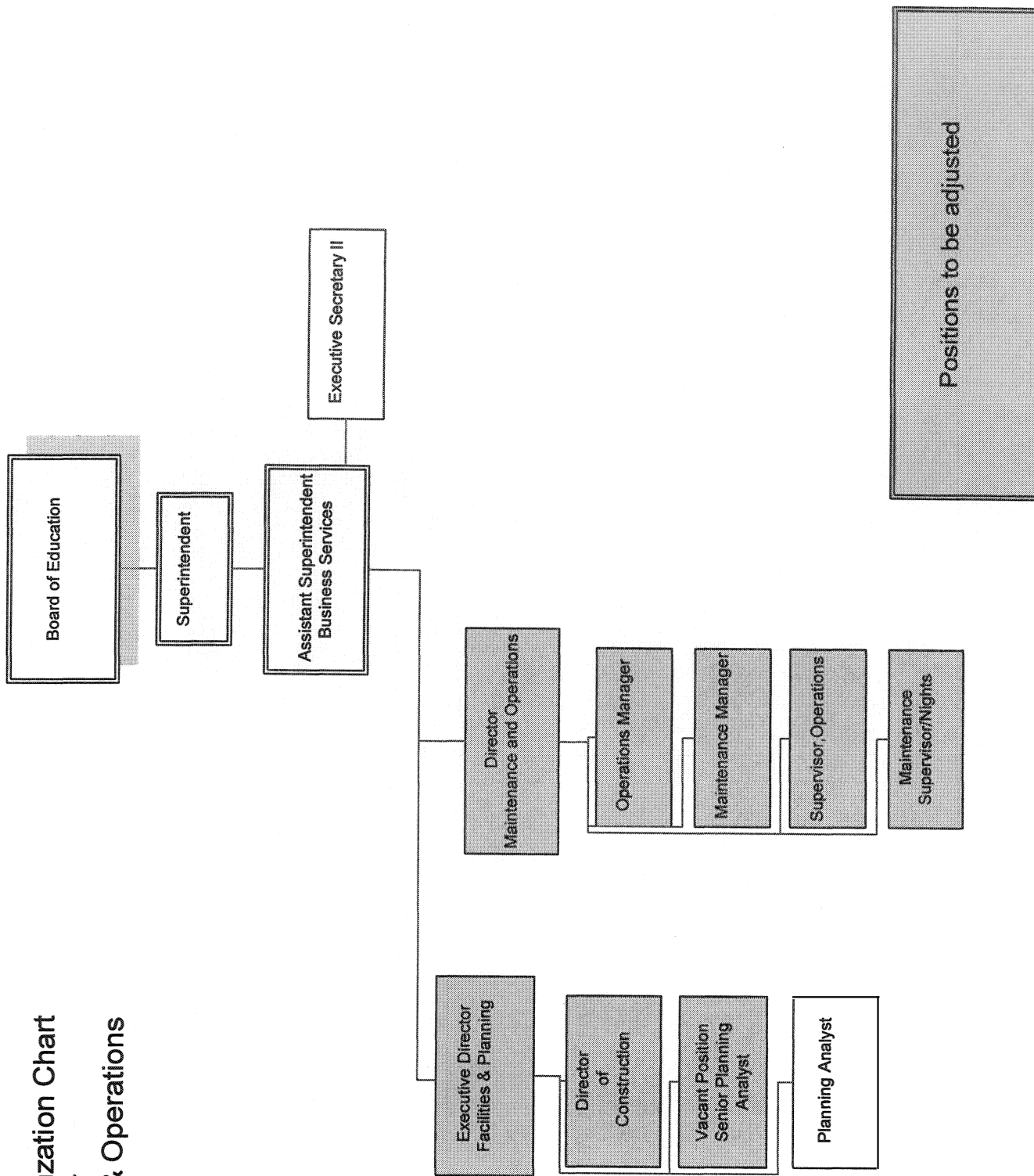


Proposed Organization Chart  
for  
Maintenance & Operations



Adjusted positions - No additional management positions compared to current structure.

# Current Organization Chart for Maintenance & Operations



Positions to be adjusted

**TOPIC: CONTRACT SERVICES REPORT – EDUCATIONAL SERVICES**

**DESCRIPTION:** The following is a report of contract service items for Educational Services.

**SPECIAL EDUCATION STUDENT #243623** As the result of an agreement, the District agrees to reimburse the parents for tuition and transportation costs for the 2006-2007 school year. Reimbursement will be based upon presentation of itemized statements and appropriate proof of payment.  
Special Education . . . . . not-to-exceed . . . . . \$34,226  
01.00-6500-0-5842-5770-1110-207-207-000 (Gee)

**BRUCE BOTHWELL CLIENT TRUST ACCOUNT** As the result of a settlement agreement in Office of Administrative Hearings (OAH) Case No. N2006040565, where the District is named as a respondent, the District agrees to reimburse parents for educational services and attorneys' fees and costs upon presentation of itemized statements and appropriate proof of payment.  
Special Education . . . . . not-to-exceed . . . . . \$20,000  
01.00-6500-0-5842-5770-1110-207-207-000 (Gee)

**SPECIAL EDUCATION STUDENT #333027** As the result of a settlement agreement in Office of Administrative Hearings (OAH) Case No. N2006100016, where the District is named as a respondent, the District agrees to reimburse parents for reasonable attorneys' fees and costs and for an independent speech and language evaluation upon presentation of itemized statements and appropriate proof of payment.  
Special Education . . . . . not-to-exceed . . . . . \$3,050  
01.00-6500-0-5850-5770-1190-207-207-000 (Gee)

**SPECIAL EDUCATION STUDENT ID #234191** As the result of a settlement agreement in Special Education Hearing Office (SEHO) Case No. SN05-01812, the District has agreed to reimburse the parents for educational-related expenses during the 2005/2006 school year. Reimbursement will be based upon receipt of itemized statements and appropriate proof of payment.  
Special Education . . . . . not-to-exceed . . . . . \$2,275  
01.00-6500-0-5835-5001-2110-207-207-000 (Gee)

**EDUCATIONAL  
CONSULTING  
SERVICES, INC.**

Dr. Diane Hager from Educational Consulting Services, Inc., conducted a second teacher training for special education teachers on October 25, 2006. Original Board approval was on March 9, 2006, with the first training held on May 10, 2006. Staff inadvertently omitted this second training date. This training focused on DIBELS (Dynamic Indicators of Basic Early Reading Skills). DIBELS is an assessment tool used for screening to identify students in need of supplemental reading intervention, ongoing progress monitoring, data analysis and interpretation. Staff applied for and received CalSTAT grant funding that paid for approximately one-third of the consultant's cost for both training days.

Special Education . . . . .not-to-exceed . . . . . \$2,000  
01-00-6500-0-5842-5770-1110-207-207-000 (Gee)

**GEO-ZOV, INC.**

The District currently leases space located at the corner of Tustin and Meats in Orange for the Adult Transition Center. The ATC provides job training opportunities for special education students who have not graduated from high school with a regular diploma, and are eligible to receive Special Education services until their 22<sup>nd</sup> birthday. The current five-year lease was re-negotiated effective October 1, 2006. Approval is needed to process the monthly lease payments for the remainder of the 2006/2007 school year.

Special Education . . . . .not-to-exceed . . . . . \$20,160  
01-00-6500-0-5630-5750-1110-207-207-000 (Gee)

**DR. KENNETH  
STICHTER**

Dr. Stichter's expertise is required to guide staff through the development and state approval process necessary for the implementation of the Opportunity Program, Community Day School and the expanded Independent Study Program. Dr. Stichter will provide 120 hours of service at a rate of \$75 per hour.

Pupil Retention/Prevention Block Grant . . not-to-exceed . . . \$9,000  
01.00-7390-0-5850-3300-2700-613-210-000 (Jones)  
01.00-7390-0-5850-3400-2700-613-210-000  
01.00-7390-0-5850-3550-2700-613-210-000

**LESSON LAB/  
ACHIEVEMENT  
PEARSON SOLUTIONS**

School Districts are required to provide an equitable share of federal monies to the private schools within their attendance boundaries. LessonLab/Pearson Education, led by Brad Ermeling, Director of Secondary Research & Development, will provide ongoing leadership, facilitation and instructional improvement training for the entire Lutheran High School faculty. Services include access to LessonLabs video-based technology platform. Fiscal impact will be the expenditure of restricted categorical fund monies.

Title II, Part A.....not-to-exceed ..... \$26,030  
01.00-4035-6-5850-1323-2140-604-604-000 (VanEck)

**PLATO LEARNING**

Plato Learning provides educational software to help students improve their scores on subject areas for the California High School Exit Exam (CAHSEE). It is necessary to purchase a Plato Package X license to facilitate use of this product. The fiscal impact will be the expenditure of restricted categorical fund monies.

Pupil Retention Block Grant. . . . not-to-exceed . . . . \$12,443  
01.00-7390-0-5843-1132-2420-604-604-000 (Van Eck)

**FISCAL IMPACT:** \$132,184

**RECOMMENDATION:** It is recommended that the Board of Education approve the Contract Services Report – Educational Services as presented.

TOPIC: **STUDY TRIPS**

DESCRIPTION: Canyon High School Band – Waikiki, Hawaii – April 1 – 6, 2007  
Canyon High School Band team under the direction of Harold Witten will travel to Waikiki to participate in the Hawaiian Invitational International Music Festival. The students will have the opportunity to compete with students from many across the western states and more. The fifty-four female and ninety-six male students will be accompanied by six male and nine female adult chaperones as well as parents. The students will be staying at the Waikiki Resort with travel arrangements being handled by Coastline Travel Advisors. They will travel by air on Hawaiian Airlines from LAX with transportation to the airport provided by district bus. The cost per student is \$1271.00 and scholarships are available. The students will not miss any school days and there will not be a substitute needed. Fiscal impact will be the receipt of donated funds.

Orange High School – Boy's Basketball Team – Yuma, AZ – December 14 – 16, 2006

The Orange High School Boy's Basketball Team under the direction of their coach Craig Abercrombie will travel to Yuma, AZ to compete in the South West Rotary Classic Basketball Tournament. The student/athletes will have the opportunity to compete against teams from across the western states as well as gain exposure to college scouts. The twelve male students will be accompanied by two male adult chaperones. They will be housed at the Holiday Inn in Yuma. Transportation will be provided by an Enterprise Rental van driven by Craig Abercrombie who will have an approved Orange Unified School District Driver Certificate on file prior to the trip. There is no cost to the student. The students will miss two school days and the teacher/coach will require a substitute for two days. The cost of the substitute will be funded through the athletic budget. Fiscal Impact will be the expenditure of unrestricted athletic fund monies totaling \$110.00.

Canyon High School – Wrestling Team – Torrance, CA – December 1 – 2, 2006

The Canyon High School Wrestling team under the direction of their coach Scott Lawson will travel to Torrance to participate in the West High Wrestling Tournament. The fourteen male students will be accompanied by two male adult chaperones. They will be housed at the Torrance Marriott Hotel with transportation provided by district bus. There is no cost to the students. The students will miss one school day and no substitute will be required. The fiscal impact will be the receipt of donated funds.

RECOMMENDATION: It is recommended that the Board of Education approve these study trips as presented.

TOPIC:	<b>SCHOOL READINESS NURSE EXPANSION PROGRAM: NEW CONTRACT WITH THE CHILDREN AND FAMILIES COMMISSION OF ORANGE COUNTY TO PROVIDE GRANT FUNDING</b>
DESCRIPTION:	The School Readiness Nurse Expansion Coordinator has received a grant from the Children and Families Commission of Orange County to continue the District's School Readiness Nurse Expansion Program for the next two-year funding cycle (July 1, 2006 through June 30, 2008). Grant funding will provide children 0-5 years of age and their families with child health screenings and parent health education classes conducted by two School Readiness nurses.
FISCAL IMPACT:	Receipt of restricted categorical funds totaling \$154,500 each year, over a period of two years, for a grand total of \$309,000. 01-00-9206-0-8677-0001-3140-206-207-000
RECOMMENDATION:	It is recommended that the Board of Education accept the grant funding from the School Readiness Nurse Expansion Program in association with the Children and Families Commission of Orange County in the amount of \$309,000.

TOPIC:	<b>AGREEMENT WITH TOBACCO-FREE COMMUNITIES SERVICES – ORANGE COUNTY ON TRACK</b>
DESCRIPTION:	Orange Unified School District has been asked to enter into an agreement with Tobacco-Free Communities Services (TFC) – On Track for the 2006-2007 school year. TFC is an innovative, comprehensive, community-school linked program that has been implemented in four Orange County communities over a four-year period. Orange County On Track had great success in the City of Santa Ana and will be implementing TFC in the City of Orange for the next three years. This successful tobacco cessation program will be offered to all five high school campuses in Orange Unified and will provide funding for a campus facilitator for the program.
FISCAL IMPACT:	Funding of \$20,000 for the 2006-2007 school year is provided by the County of Orange Health Care Agency through monies received from the National Tobacco Settlement.
RECOMMENDATION:	It is recommended that the Board of Education approve the agreement between the District and Orange County on Track for the 2006-2007 school year.



TOPIC:	<b>TEXTBOOK ADOPTIONS – FINAL</b>
DESCRIPTION:	The attached list of textbooks has been available for review for the thirty days required by the Education Code.
FISCAL IMPACT:	<p>Textbooks will be purchased from the textbook accounts during the 2006/2007 school year. Auxiliary adoption texts are used to supplement the basic textbook and are purchased with funds other than the state textbook monies.</p> <p>District and State Textbook Account Numbers: 01.00-7156-0-4110-1110-1000-609-609-000, 01.00-7158-0-4210-1110-2420-609-609-000 Other school textbook accounts are used for auxiliary adoptions.</p>
RECOMMENDATION:	It is recommended that the Board of Education adopt the attached list of textbooks for the Orange Unified School District.

# **Orange Unified School District**

## **TEXTBOOK ADOPTIONS**

*Board Review – September 28, 2006*

*Final Approval – November 16, 2006*

## **TEXTBOOK RE-ADOPTION**

<b><i>Title</i></b>	<b><i>Subject</i></b>	<b><i>Grade Level</i></b>	<b><i>Publisher</i></b>	<b><i>Copyright</i></b>	<b><i>ISBN</i></b>	<b><i>Funding Source</i></b>	<b><i>State Matrix</i></b>	<b><i>IMAC</i></b>
Conceptual Physics	Science	11-12	Prentice Hall	2006	0131663011	State Textbook Funds	No	9/11/06

## **AUXILIARY ADOPTION**

<b><i>Title</i></b>	<b><i>Subject</i></b>	<b><i>Grade Level</i></b>	<b><i>Publisher</i></b>	<b><i>Copyright</i></b>	<b><i>ISBN</i></b>	<b><i>Funding Source</i></b>	<b><i>State Matrix</i></b>	<b><i>IMAC</i></b>
Learning Magnets Super Activity Kit	ELD	K-6	Barker Creek	2006	N/A	Non-Textbook Funds	No	9/11/06
No Fear U.S. Constitution & Other Important Documents	Social Studies	8-12	Spark Publishing	2006	1411404181	Non-Textbook Funds	No	9/11/06
Take A Stand	Social Studies	6-11	Take A Stand Publishing	2006	N/A	Non-Textbook Funds	No	9/11/06

TOPIC:	<b>SPECIAL EDUCATION NON-PUBLIC SCHOOLS &amp; DESIGNATED INSTRUCTIONAL SERVICES- 2006-2007</b>
DESCRIPTION:	Pursuant to the requirements of California Education Code Section 56365(a) – Non-Public Schools/Agencies (NPS) and Designated Instruction and Services (DIS) – (i.e. speech/language, physical/occupational therapy, orientation mobility training, adaptive physical education) – the Board of Education is authorized to place individuals with exceptional needs in non-public schools/agencies when those pupils cannot be appropriately served within the programs available in the school district.
FISCAL IMPACT:	Special Education Funds: \$189,730 01.00-6500-0-5870-5750-1180-207-207-000 01.00-6500-0-5871-5770-1190-207-207-000
RECOMMENDATION:	It is recommended that the Board of Education authorize non-public school/agency placement for the student identification numbers listed on the attached report, as presented.

**Orange Unified School District  
Report of Special Education  
Non-Public Schools & Designated Instructional Services 2006-2007**

<b>ID No.</b>	<b>Non-Public School</b>	<b>Cost</b>	<b>Period Covered</b>
262594	Alton School Cypress, California	\$18,496	10/16/06 – 06/30/07
323748	Blind Children's Learning Center Santa Ana, California	24 Addendum	07/01/06 – 06/30/07
333274	Blind Children's Learning Center	22 Addendum	07/01/06 – 06/30/07
243623	Grace Education Costa Mesa, California	23,406	09/25/06 – 06/30/07
348111	Rossier Park Elementary School Orange, California	33,192	09/11/06 – 06/30/07
262142	Sea Star School Irvine, California	61,010	09/26/06 – 06/30/07
348192	Therapeutic Education Center Santa Ana, California	31,442	09/27/06 – 06/30/07
312742	Winston School Del Mar, California	22,138	09/05/06 – 06/30/07

TOPIC:	<b>EXPULSION OF STUDENT: CASE NO. 06-07-09</b>
DESCRIPTION:	Violation of California Education Code 48900 (b) (k) and 48915 (a) (1) (2).
FISCAL IMPACT:	The District will have a loss of ADA for one semester.
RECOMMENDATION:	<p>It is recommended that the Board of Education uphold the recommendation that the student be expelled from the schools of the District for one semester.</p> <p>A hearing panel of administrators met on Monday, October 16, 2006, and determined that a recommendation for expulsion be presented to the Board of Education. It was recommended that the student be expelled for one semester (January 30, 2007). It was further recommended that the student attend an alternative program for one semester. It was recommended that the student serve 20 hours of community service validated in writing. Parent/guardian, student is to meet with the Office of Child Welfare &amp; Attendance prior to re-enrolling in OUSD.</p>

TOPIC:	<b>EXPULSION OF STUDENT: CASE NO. 06-07-10</b>
DESCRIPTION:	Violation of California Education Code 48900 (c) (k).
FISCAL IMPACT:	The District will have a loss of ADA for one semester.
RECOMMENDATION:	<p>It is recommended that the Board of Education uphold the recommendation that the student be expelled from the schools of the District for two semesters, however, conditionally suspend the second semester.</p> <p>A hearing panel of administrators met on Monday, October 23, 2006, and determined that a recommendation for expulsion be presented to the Board of Education. It was recommended that the student be expelled for two semesters (June 16, 2007). It was further recommended that the student attend an alternative program for one semester. It was recommended that the student serve 10 hours of community service validated in writing and complete a substance abuse program. Parent/guardian, student is to meet with the Office of Child Welfare &amp; Attendance prior to re-enrolling in OUSD to review the conditions of the expulsion.</p>

TOPIC:	<b>EXPULSION OF STUDENT: CASE NO. 06-07-11</b>
DESCRIPTION:	Violation of California Education Code 48900 (a) (1), (2) and (k).
FISCAL IMPACT:	The District will have a loss of ADA for two semesters.
RECOMMENDATION:	<p>It is recommended that the Board of Education uphold the recommendation that the student be expelled from the schools of the District for two semesters.</p> <p>A hearing panel of administrators met on Monday, October 23, 2006, and determined that a recommendation for expulsion be presented to the Board of Education. It was recommended that the student be expelled for two semesters (June 16, 2007). It was further recommended that the student attend an alternative program in their school of residence for one semester. Parent and student have moved to another District and will be denied attendance in the Orange Unified School District for two semesters.</p>

**TOPIC:** **EXPULSION OF STUDENT: CASE NO. 06-07-12**

**DESCRIPTION:** Violation of California Education Code 48900 (c), (k), and 48915 (a) (3).

**FISCAL IMPACT:** The District will not have a loss of ADA for two semesters.

**RECOMMENDATION:** It is recommended that the Board of Education uphold the recommendation that the student be expelled from the schools of the District for two semesters, however, conditionally suspend the expulsion.

A hearing panel of administrators met on Wednesday, November 1, 2006, and determined that a recommendation for expulsion be presented to the Board of Education. It was recommended that the student be expelled for two semesters (June 16, 2007), however, conditionally suspend the expulsion. It was further recommended that the student attend another traditional school during the period of expulsion and maintain a 2.0 GPA. It was further recommended that the student complete 20 community service hours and completes a substance abuse program, both validated in writing. Further, student is not to have any violations of penal codes or education codes or the suspended expulsion will be revoked.



**TOPIC: NOTICE OF ANNUAL ORGANIZATIONAL MEETING -  
DECEMBER 14, 2006**

**DESCRIPTION:** The provisions of Education Code section 35143 require the governing board of each school district to hold an annual organizational meeting within a prescribed 15-day period. For the year 2006, this 15-day period is from December 1<sup>st</sup> through December 16<sup>th</sup>. The law further requires that, unless otherwise provided by rule of the governing board, the day and time of the annual organizational meeting shall be selected by the Board at its regular meeting held immediately prior to the first day of the 15-day period.

The law further stipulates that the meeting shall include the following actions:

1. Newly-elected Board members shall be administered the Oath of Office at or before the Organizational Meeting. (Board Bylaw 9224)
2. The Board shall:
  - a. Elect a President, Vice-President and Clerk
  - b. Appoint a Secretary to the Board
  - c. Authorize signatures
  - d. Adopt of Calendar of Meeting Schedules
  - e. Designate Board representatives

**FISCAL IMPACT:** This item has no fiscal impact.

**RECOMMENDATION:** It is recommended that the Orange Unified School District Board of Education hold its 2006 Annual Organizational Meeting Thursday, December 14, 2006, at 7:30 p.m. in the Board Room of the Education Center, 1401 N. Handy Street, and notify newly-elected Board members of this meeting and the actions that will be taken.

TOPIC:	<b>CALIFORNIA SCHOOL BOARDS ASSOCIATION: DELEGATE ASSEMBLY NOMINATIONS</b>
DESCRIPTION:	<p>Nominations for representatives to CSBA's Delegate Assembly will be accepted until Friday, January 5, 2007. Any CSBA member is eligible to nominate board members within their geographical region or subregion. Each board may nominate as many individuals as it chooses.</p> <p>The Delegate Assembly is the primary policy-making body of CSBA. Delegates adopt the Association's legislative platform, take positions on other critical issues that may come before it, elect the officers and directors and adopt bylaws changes. Delegates also serve as a two-way communications link between the Board members in the region and the regional director and play an important role in fostering collegiality within their region. There are normally two Delegate Assembly meetings each year.</p> <p>Orange Unified is part of Region 15. There are eight vacancies in the region. A nomination packet is submitted for each candidate, which includes a letter of nomination and biographical sketch. Nominations must be postmarked on or before January 5, 2007. CSBA Delegates serve two-year terms. Those elected in 2007 will serve immediately upon election through March 31, 2009.</p>
FISCAL IMPACT:	This item has no fiscal impact.
RECOMMENDATION:	It is recommended that the Board of Education consider the nomination of a Board member(s) to be a candidate for CSBA Delegate Assembly.

**REGION 10 - Counties: Fresno, Kings, Madera*****Subregion 10-A (Madera)***

John E. Reynolds (Yosemite USD)

***Subregion 10-B (Fresno)***

Kathy Martin (Raisin City ESD)

Oscar Sablan (Firebaugh-Las Deltas USD)

Kathy Spate (Caruthers USD)

**REGION 11 - Counties: Santa Barbara, Ventura & Las Virgenes USD*****Subregion 11-A (Santa Barbara)***

Nancy Harter (Santa Barbara ESD & HSD)

***Subregion 11-B (Ventura County and Las Virgenes USD)***

Suzanne Kitchens (Pleasant Valley SD)

Catherine Sepulveda (Santa Paula Union HSD)

**REGION 12 - Counties: Kern, Tulare*****Subregion 12-A (Tulare)***

Jean Miller (Lindsay USD)

***Subregion 12-B (Kern)***

Linda Pavletich (Rio Bravo-Greeley Union ESD)

Steven Skalisky (Richland SD)

Connie Wattenbarger (Kern Union HSD)

Dee Whitley (Panama-Buena Vista Union SD)

**REGION 15 - Counties: Orange County and Lowell Jt. USD**

Sheila J. Benecke (Capistrano USD)

Bonnie Castrey (Huntington Beach Union HSD)

Judith Edwards (Fountain Valley ESD)

Karin Freeman (Placentia-Yorba Linda USD)

Sue Kuwabara (Irvine USD)

Craig T. Olson (Placentia-Yorba Linda USD)

James Reed (Westminster ESD)

Robert A. Singer (Fullerton Joint Union HSD)

**REGION 16 - Counties: Inyo, San Bernardino*****Subregion 16-A (Inyo)***

Catherine George (Lone Pine USD)

***Subregion 16-B (San Bernardino)***

Tom Courtney (Lucerne Valley USD)

Julian Steve Garcia (Ontario-Montclair SD)

Karen Gray (Silver Valley USD)

Karen Morgan (Victor ESD)

Kathy A. Thompson (Central ESD)

Charles Uhalley (Chaffey Joint Union HSD)

**REGION 17 - County: San Diego**

George Gastil (Lemon Grove ESD)

Kelli Moors (Carlsbad USD)

Barbara Myers (Del Mar Union SD)

Barbara P. Rohrer (Valley Center-Pauma USD)

Barbara Ryan (Santee ESD)

Carol Skiljan (Encinitas Union ESD)

**REGION 18 - Counties: Imperial, Riverside*****Subregion 18-A (Riverside)***

Donald Aikens (Palm Springs USD)

John J. Chavez (Jurupa USD)

K. R. Zack Earp (Alvord USD)

Marilyn Forst (Hemet USD)

Matteo Monica (Desert Sands USD)

David Sanchez (Beaumont USD)

***Subregion 18-B (Imperial)***

Cesar Guzman (Brawley ESD)

**REGION 20 - County: Santa Clara**

Tanya Freudenberger (Alum Rock Union ESD)

Josephine Lucey (Cupertino Union SD)

Nancy A. Newton (Fremont Union HSD)

Teresa O'Neill (Santa Clara USD)

**REGION 22 - County: North Los Angeles**

Rose Koscielny (Saugus Union ESD)

Steven M. Sturgeon (William S. Hart Union HSD)

**REGION 23 - Counties: San Gabriel Valley and East Los Angeles County*****Subregion 23-A***

Ted Bunch (Burbank USD)

Robert Gin (Alhambra USD)

***Subregion 23-B***

Heidi L. Gallegos (Rowland USD)

Helen Hall (Walnut Valley USD)

Janye Iberri (El Monte City SD)

***Subregion 23-C***

Doris Blum (Glendora USD)

Ilean Ochoa (Azusa USD)

**Region 24 - County: Southwest Crescent - Los Angeles Cnty**

Jorge L. Arroyo (Centinela Valley Union HSD)

Sonya Cuellar (Paramount USD)

Alice Grigsby (Inglewood USD)

Cathy McCurdy (Hermosa Beach City ESD)

Ana Valencia (Norwalk-La Mirada USD)