



ORANGE UNIFIED SCHOOL DISTRICT

Measure S Bond Program

August 2019 Monthly Progress Report



PERIOD COVERED:

August 1-31, 2019

FISCAL YEAR

FY 2019-2020

PROGRESS REPORT NO.

PR-026-1920-026

PREPARED BY:

CUMMING
Building Value Through Expertise



TABLE OF CONTENTS

1.0 Executive Summary

- 1.1 Program Summary
- 1.2 Program Highlights/Key Milestones
- 1.3 Look Ahead (next 90 days)

2.0 Project Status Report

- Canyon HS – Science Center
- El Modena HS – Science Center
- Orange HS – Utility Infrastructure (Increment # 1)
- Orange HS – Science Center (Increment # 2)
- Villa Park HS – Interim Housing & Science Center

3.0 Financial Report

- 3.1 Project Cost Estimate
 - Budget vs Actuals with Vendor details per High School
- 3.2 Cash Flow Projections

4.0 Program Schedule Summary



1.0 EXECUTIVE SUMMARY

1.1 Program Summary

Division of State Architects (DSA) approval to establish design criteria completed as follows:

- (Completed) June 25, 2019 - Orange HS Custom Shade Structures (04-118351)
- (Completed) May 2, 2019 - Canyon HS Interim Modular Kitchen (04-118418)
- (Completed) January 31, 2019 - Canyon HS Science Center (04-117300)
- (Completed) November 6, 2018 - El Modena HS Science Center (04-117098)
- (Completed) August 16, 2018 - Villa Park HS Science Center (04-117022)
- (Completed) July 12, 2018 - Orange HS Science Center (Increment # 2) (04-116859)
- (Completed) April 10, 2018 - Orange HS Increment # 1 (Satellite Kitchen) (04-116673.2)
- (Completed) March 1, 2018 - Orange HS Increment #1 (Infrastructure Upgrades, Move Relocatable Buildings, Bus Drop-Off, Restroom Renovation Project) (04-116673.1)
- (Completed) February 7, 2018 - Villa Park HS Interim Housing (DSA Application #04-116788)

Construction started / completed, as follows:

- (Construction Start) June 12, 2019 – Canyon HS Science Center
- (Construction Start) February 18, 2019 – Orange HS Science Center (Increment #2)
- (Construction Start) April 2, 2019 – El Modena HS Science Center
- (Construction Start) January 7, 2019 – Villa Park HS Science Center (Interim Housing and Science Center)
- (Construction Start - June 15, 2018 / [completed June 28, 2019](#) – Orange HS Site Infrastructure (Increment #1)

1.2 Program Highlights/Key Milestones

Phase II Measure S Bond Project Development Update:

- As of 8/30/19 the architectural contracts for each high school are being prepared for execution in order to start the design process.

California Environmental Quality Act (CEQA) Compliance Achieved (as required by law):

- Villa Park HS – Notice of Exemption (Board approved on 9/20/18).
- Canyon HS – Notice of Exemption (Board approved on 7/26/18).
- Orange HS – Notice of Exemption (Board approved on 3/8/18).
- El Modena HS – Notice of Exemption (Board approved on 3/8/18).

Project Achievements:



- As of 8/16/19, at Orange HS Increment # 1, Swinerton Builders submitted payment application # 12 (FINAL 2019), for payment processing based on the approved and filed Notice of Completion. This reflects 100% retention release, less a STOP notice held for \$862.50.

1.3 Look Ahead (next 90 days)

Board of Education Agenda

September 12th Tentative Items:

- There are no Measure S items recommended for Board action at the time of this report.

Program Wide

- Orange HS Increment # 1 expecting the Division of State Architects (DSA) to grant a Certificate of Completion for the project including food service building and five (5) relocatable classroom buildings.
- Orange HS Science Center – Continue with the excavation, grade beam and foundation construction of the new science center.
- Orange HS Science Center – Start the design contract for Phase II.
- Canyon HS Science Center – Start the procurement outreach for the approved Furniture, Fixture and Equipment (FF & E) list.
- Canyon HS Science Center – Continue the excavation and construction of the new science center.
- Canyon HS Science Center – Start the design contract for Phase II.
- Canyon HS Science Center – Start to receive the kitchen equipment for the interim modular kitchen.
- Canyon HS Science Center – Start the contractor installation of the kitchen equipment for the interim modular kitchen.
- El Modena HS Science Center – Continue the excavation and construction of the new science center.
- El Modena HS Science Center – Start the design contract for Phase II.
- El Modena HS Science Center – Start the procurement outreach for the approved Furniture, Fixture and Equipment (FF & E) list.



- Villa Park HS Interim Housing & Science Center – Start the design contract for Phase II.
- Villa Park HS Interim Housing & Science Center – Continue the excavation and construction of the new science center.
- Villa Park HS Interim Housing & Science Center – Start the procurement outreach for the approved Furniture, Fixture and Equipment (FF & E) list.



2.0 PROJECT STATUS REPORT



Canyon High School
New STEM Building

CANYON HIGH SCHOOL



EL MODENA SCIENCE CENTER

Overall View

HED



Orange High School Science Center



AT VILLA PARK HIGH SCHOOL

LPA



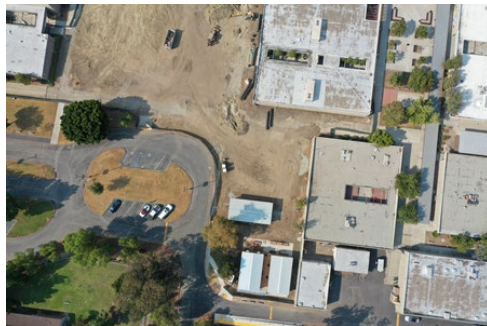
CANYON HS SCIENCE CENTER

- | | |
|---|---|
| <ul style="list-style-type: none"> • 12 Laboratory Rooms • 12 General Classrooms • Student Services • New Food Services | <ul style="list-style-type: none"> • New Multi-Purpose Room Entry • Parking Lot Improvements • Infrastructure Upgrade and Improvements • Landscape Improvements |
|---|---|

Project Update ([Construction](#)):

- As of 8/30/19, the temporary interim kitchen prep and site excavation and trenching continue within the new science center building footprint.
- As of 8/26/19, to keep construction moving, the following construction directive(s) (CD) were issued;
 - CD # 04 for a not-to-exceed (NTE) price of \$17,869 to provide a survey all existing utilities within the jobsite perimeter (part of Allowance # 2).
- On 8/19/19, the construction trailers arrived on site, and were set up for occupancy.
- As of 8/13/19, the payment application # 1 (June 12-30) was submitted for payment processing.

[See Construction Photo's below:](#)



Left (top) to right: Drone shot of site; site clearing; temporary kitchen and construction trailers; and site preparation for underground piping.



EL MODENA HS SCIENCE CENTER

- | | |
|---|--|
| <ul style="list-style-type: none">• 12 Laboratory Rooms• 1 General Classrooms• 2 Medically Fragile Classrooms | <ul style="list-style-type: none">• Relocation of Campus MDF• Technology & Utility Upgrade• Landscape Improvements |
|---|--|

Project Update (**Construction**):

- As of 8/30/19, the site excavation and trenching continue within the new science center building footprint.
- As of 8/22/19, processing payment applications # 2 (June) reflecting 6% paid overall completion.

See Construction Photo's below:



Left (top) to right: Underground vaults being set; trenching for underground conduit and piping runs; trenching and concrete slurry pours.



ORANGE HS UTILITY INFRASTRUCTURE

- Site Utility & Infrastructure Upgrade
 - Satellite Kitchen
 - Electrical Utility Yard
- Relocate (5) and Demolish (4) of portable classroom buildings

Project Update Increment # 1 – Site Utility Infrastructure (**Construction**):

- As of 8/16/19 we are waiting for the final DSA sign-off (Certification of Compliance) based on the DSA-168 filed. The Notice of Completion for the contract listed below have been completed and accepted by the Board of Education on 7/25/19 and recorded with the County of Orange on 08/01/19.

[See Construction Photo's below:](#)



Serving window equipment in place for the Satellite Kitchen (interior)



Serving window and serving lanes in place for the Satellite Kitchen. (exterior)

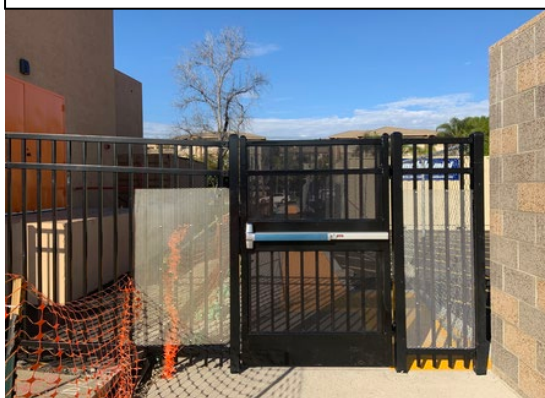


Satellite Kitchen equipment layout.

New wrought iron fencing and gates in place outside of building 100 (near bus turnout).



New wrought iron fencing gates in place at the new electrical yard.



Orange High School
"ONCE A PANTHER, ALWAYS A PANTHER"





ORANGE HS SCIENCE CENTER

- 12 Laboratory Rooms
- 1 General Classrooms

- New Panther Pavilion Plaza
- 2 Medically Fragile Classrooms

Project Update Increment # 2 – Science Center (**Construction**):

- As of 8/30/19, Pinner is continuing with excavation, and trenching and footing prep work for the new science center building footprint.
- As of 8/28/19 discussing the scheduling slippage and recovery schedule with Pinner, so that a revised schedule can be established.
- As of 8/27/19, to keep construction moving, the following construction directive (CD) was issued;
 - CD # 22 for a not-to-exceed (NTE) price of \$2,900 to remove and replace broken gas shut-off valve (part of Allowance # 2).
 - CD # 21 for a not-to-exceed (NTE) price of \$12,972 to remove and replace the Que railing at existing food service satellite kitchen (part of Allowance # 2).
- As of 8/22/19, processing payment applications # 5 (June), reflecting **13%** paid overall completion.

See Construction Photo's below:



Left (top) to right: Setting the grade beams and column foundations; trenching and forms for the column and grade beams; underground piping preparation and setting.

Orange High School
"ONCE A PANTHER, ALWAYS A PANTHER"





VILLA PARK HS SCIENCE CENTER

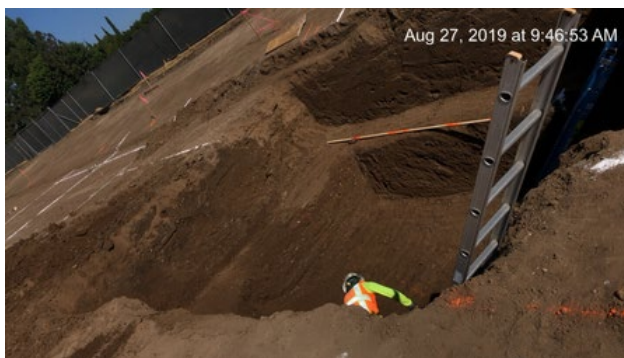
- 12 Laboratory Rooms
- 2 General Classrooms
- 2 Medically Fragile Classrooms

- Demolish existing building 300
- Install 10 New Portable Buildings

Project Update (**Construction**):

- As of 8/30/19, the site excavation, trenching and setting footing continue within the new science center building footprint.
- As of 8/23/19, to keep construction moving, the following construction directive (CD's) were issued;
 - CD # 19 for a not-to-exceed (NTE) price of \$643.53 to change the specified door thresholds per DSA-CCD 140-015.
- As of 8/22/19, processing payment applications # 5 (July) reflecting 12% paid overall completion.

See Construction Photo's below:



Left (top) to right: Setting the steel rebar for the grade beams and column foundations; rebar forms; trenching and forms for the column and grade beams; site markings for excavations.

3.0 FINANCIAL REPORT



3.1 Project Cost Estimate Summary

Measure S Bond Program Financial Report for August 2019

QSS Data thru 8/30/2019

	Budget	Contracted to Date	Expended to Date	Quarterly Expense Jul '19 - Sep '19	% Expended
PROGRAM					
Phase 1 - HS Science Center	\$201,943,839	\$151,122,081	\$31,131,682	\$8,102,670	15.42%
Phase 2	\$86,056,161	\$532,349	\$479,966	\$40,248	0.56%
TOTAL	\$288,000,000	\$151,654,430	\$31,611,648	\$8,142,918	10.98%
Canyon High School					
Phase 1 - HS Science Center	\$68,836,500	\$47,918,930	\$5,921,184	\$1,584,570	8.60%
Phase 2	\$3,163,500	\$98,093	\$54,593	\$0	1.73%
TOTAL	\$72,000,000	\$48,017,022	\$5,975,777	\$1,584,570	8.30%
El Modena High School					
Phase 1 - HS Science Center	\$38,926,251	\$32,160,165	\$4,483,431	\$1,559,711	11.52%
Phase 2	\$33,073,749	\$111,739	\$109,739	\$28,560	0.33%
TOTAL	\$72,000,000	\$32,271,904	\$4,593,170	\$1,588,271	6.38%
Orange High School					
Phase 1 - HS Science Center	\$50,858,088	\$39,986,698	\$14,320,441	\$3,427,353	28.16%
Phase 2	\$21,141,912	\$182,568	\$178,206	\$1,808	0.84%
TOTAL	\$72,000,000	\$40,169,266	\$14,498,647	\$3,429,160	20.14%
Villa Park High School					
Phase 1 - HS Science Center	\$43,323,000	\$31,056,288	\$6,406,626	\$1,531,036	14.79%
Phase 2	\$28,677,000	\$139,949	\$137,429	\$9,880	0.48%
TOTAL	\$72,000,000	\$31,196,238	\$6,544,055	\$1,540,916	9.09%

3.1 Project Cost Estimates



Measure S Bond Program

Financial Report for August 2019

Budget vs Actuals - By School and Budget Category with Vendor Detail

QSS Data thru 8/30/2019

	Budget	Contracted to Date	Expended to Date	Quarterly Expense Jul '19 - Sep '19	% Expended
Canyon High School					
390-9520 Canyon HS Science Center (DSA 04-117300)					
1. Design Cost					
1.01 Architect					
UNCOMMITTED	\$1	\$0	\$0	\$0	
GKKWORKS CANNON DESIGN	\$3,198,930	\$3,198,930	\$2,499,750	\$18,895	78.14%
LIONAKIS (Program Master Specifications)	\$14,058	\$14,058	\$14,058	\$0	100.00%
	\$3,212,989	\$3,212,988	\$2,513,808	\$18,895	78.24%
2. Construction Cost					
2.01 Construction - Science Center					
UNCOMMITTED	\$6,191,709	\$0	\$0	\$0	
ACCO ENGINEERED SYSTEMS INC	\$159,986	\$159,986	\$0	\$0	0.00%
CITY OF ANAHEIM - ELECTRICAL ENGINEERING DIV	\$91,340	\$91,340	\$91,340	\$91,340	100.00%
SWINERTON BUILDERS	\$38,400,000	\$38,400,000	\$1,275,064	\$1,275,064	3.32%
	\$44,843,035	\$38,651,326	\$1,366,404	\$1,366,404	3.05%
3. Program and Construction Management					
3.01 Program Management Fees					
UNCOMMITTED	\$1,246,119	\$0	\$0	\$0	
CUMMING CONSTRUCTION MGMT INC	\$529,396	\$1,775,515	\$527,816	\$35,975	99.70%
	\$1,775,515	\$1,775,515	\$527,816	\$35,975	29.73%
3.02 Construction Management Fees					
UNCOMMITTED	\$988,878	\$0	\$0	\$0	
CORDOBA CORPORATION	\$74,438	\$74,438	\$12,615	\$12,615	16.95%
GAFCON INC	\$1,516,569	\$2,435,801	\$792,201	\$68,452	52.24%
	\$2,579,884	\$2,510,238	\$804,816	\$81,067	31.20%
4. Construction Support Costs					
4.01 Rental					
UNCOMMITTED	\$128,027	\$0	\$0	\$0	
	\$128,027	\$0	\$0	\$0	0.00%
4.02 Title, Environmental, Stormwater Management					
UNCOMMITTED	\$118,932	\$0	\$0	\$0	
CHICAGO TITLE COMPANY	\$750	\$750	\$750	\$0	100.00%
CITY OF ANAHEIM	\$2,000	\$2,000	\$2,000	\$0	100.00%
CITY OF ANAHEIM - WATER	\$695	\$695	\$695	\$0	100.00%
COUNTY OF ORANGE - ENVIRONMENTAL HEALTH	\$1,615	\$1,615	\$1,615	\$0	100.00%
ENVIRONMENTAL AUDIT INC	\$50,800	\$50,800	\$21,375	\$0	42.08%
OUSD COST OF INTEREST DISTRIBUTION FY 16/17	\$1	\$1	\$1	\$0	100.00%
	\$174,793	\$55,861	\$26,436	\$0	15.12%
4.03 Commissioning					
UNCOMMITTED	\$0	\$0	\$0	\$0	



Measure S Bond Program
Financial Report for August 2019
Budget vs Actuals - By School and Budget Category with Vendor Detail

QSS Data thru 8/30/2019

P2S ENGINEERING INC	\$49,202	\$49,202	\$15,264	\$0	31.02%
	\$49,202	\$49,202	\$15,264	\$0	31.02%
4.04 Builders Risk Insurance					
UNCOMMITTED	\$0	\$0	\$0	\$0	
	\$0	\$0	\$0	\$0	
4.05 DSA Review Fees					
UNCOMMITTED	\$280,485	\$0	\$0	\$0	
DIVISION OF STATE ARCHITECT	\$494,050	\$494,050	\$494,050	\$0	100.00%
	\$774,535	\$494,050	\$494,050	\$0	63.79%
4.06 Postage, Printing & Advertising					
UNCOMMITTED	\$59,830	\$0	\$0	\$0	
AMERICAN REPROGRAPHICS CO LLC	\$13,561	\$13,561	\$9,514	\$0	70.15%
SOUTHERN CALIFORNIA NEWS GROUP	\$2,605	\$2,605	\$2,605	\$0	100.00%
	\$75,997	\$16,167	\$12,119	\$0	15.95%
4.07 DSA Inspection					
UNCOMMITTED	\$139,851	\$0	\$0	\$0	
KNOWLAND CONSTRUCTION SERVICES	\$525,120	\$525,120	\$0	\$0	0.00%
	\$664,971	\$525,120	\$0	\$0	0.00%
4.08 DSA Construction Phase Testing					
UNCOMMITTED	\$462,291	\$0	\$0	\$0	
AMERICAN ENGINEERING	\$202,680	\$202,680	\$0	\$0	0.00%
	\$664,971	\$202,680	\$0	\$0	0.00%
4.09 Relocation					
UNCOMMITTED	\$0	\$0	\$0	\$0	
	\$0	\$0	\$0	\$0	
4.10 Labor Compliance					
UNCOMMITTED	\$94,996	\$0	\$0	\$0	
	\$94,996	\$0	\$0	\$0	0.00%
4.11 Preliminary Testing (Hazmat, Topo Survey, Geo)					
UNCOMMITTED	\$632,071	\$0	\$0	\$0	
C BELOW SUBSURFACE IMAGING (Subsurface Investigation)	\$8,445	\$8,445	\$8,445	\$0	100.00%
CALIFORNIA GEOLOGICAL SURVEY (Geology and Seismology Review)	\$3,600	\$3,600	\$3,600	\$0	100.00%
ENVIRONMENTAL NETWORK CORPORATION (Hazardous Material Investigation)	\$24,455	\$24,455	\$0	\$0	0.00%
HARRINGTON GEOTECHNICAL ENGINEERING INC (Geotechnical Soils Investigation)	\$13,500	\$13,500	\$13,500	\$0	100.00%
PROVENCER, GEORGE (dba PROVO ENGINEERING)	\$720	\$720	\$720	\$0	100.00%
RMA GROUP (dba SITSCAN)	\$26,103	\$26,103	\$26,103	\$0	100.00%
XICOTENCATL ENRIQUE SALAZAR (Topographical Survey)	\$20,100	\$20,100	\$20,100	\$0	100.00%
	\$728,994	\$96,923	\$72,468	\$0	9.94%
4.12 Utility Connection Fees (with Local Permittin					
UNCOMMITTED	\$189,991	\$0	\$0	\$0	
	\$189,991	\$0	\$0	\$0	0.00%
4.13 FF&E (Laboratory Tables and Chairs, other)					
UNCOMMITTED	\$1,519,934	\$0	\$0	\$0	
	\$1,519,934	\$0	\$0	\$0	0.00%
4.14 Legal Counsel					
UNCOMMITTED	\$94,996	\$0	\$0	\$0	



Measure S Bond Program
Financial Report for August 2019
Budget vs Actuals - By School and Budget Category with Vendor Detail

QSS Data thru 8/30/2019

	\$94,996	\$0	\$0	\$0	0.00%
5. Contingency					
5.01 Construction Contingency					
UNCOMMITTED	\$3,840,000	\$0	\$0	\$0	
	\$3,840,000	\$0	\$0	\$0	0.00%
5.02 Project Contingency					
UNCOMMITTED	\$7,094,800	\$0	\$0	\$0	
	\$7,094,800	\$0	\$0	\$0	0.00%
Total 390-9520 Canyon HS Science Center (DSA 04-117300)	\$68,507,630	\$47,590,069	\$5,833,181	\$1,502,341	8.51%
390-0000 Canyon HS IP Surveillance Camera and Systems					
1. FF&E (IP Surveillance Camera)					
\$5000+ New Equipment					
UNCOMMITTED	\$0	\$0	\$0	\$0	
CDW GOVERNMENT INC (Parts for IP Camera Systems)	\$29,337	\$29,337	\$29,337	\$0	100.00%
DIGITAL NETWORKS GROUP INC (F/I IP Camera Software)	\$7,093	\$7,093	\$7,093	\$0	100.00%
INTER-PACIFIC INC (Install IP Based Surveillance Camera System)	\$18,163	\$18,163	\$18,163	\$0	100.00%
	\$54,593	\$54,593	\$54,593	\$0	100.00%
2. Contingency					
2.01 Project Contingency					
UNCOMMITTED	\$3,994	\$0	\$0	\$0	
	\$3,994	\$0	\$0	\$0	0.00%
Total 390-0000 Canyon HS IP Surveillance Camera and Systems	\$58,587	\$54,593	\$54,593	\$0	93.18%
390-9520 Canyon HS Interim Kitchen (DSA 04-118418)					
1. Design Cost					
1.01 Architect					
UNCOMMITTED	\$0	\$0	\$0	\$0	
GKKWORKS CANNON DESIGN	\$34,620	\$34,620	\$0	\$0	0.00%
	\$34,620	\$34,620	\$0	\$0	0.00%
2. Construction Cost					
2.01 Construction					
UNCOMMITTED	\$10	\$0	\$0	\$0	
E.R.E.S. ENTERPRISES INC DBA ECONOMY RESTAURANT EQUIP	\$49,721	\$49,721	\$0	\$0	0.00%
THE DICKLER CORPORATION DBA CHEFS TOYS	\$109,449	\$109,449	\$0	\$0	0.00%
	\$159,180	\$159,170	\$0	\$0	0.00%
3. Program and Construction Management					
3.01 Program Management Fees					
UNCOMMITTED	\$0	\$0	\$0	\$0	
	\$0	\$0	\$0	\$0	
3.02 Construction Management Fees					



Measure S Bond Program
Financial Report for August 2019
Budget vs Actuals - By School and Budget Category with Vendor Detail

QSS Data thru 8/30/2019

UNCOMMITTED	\$0	\$0	\$0	\$0	
	\$0	\$0	\$0	\$0	
4. Construction Support Costs					
4.01 Rental					
UNCOMMITTED	\$0	\$0	\$0	\$0	
ELITE MODULAR LEASING & SALES INC	\$129,295	\$129,295	\$82,229	\$82,229	63.60%
	\$129,295	\$129,295	\$82,229	\$82,229	63.60%
4.02 Title, Environmental, Stormwater Management					
UNCOMMITTED	\$0	\$0	\$0	\$0	
	\$0	\$0	\$0	\$0	
4.03 Commissioning					
UNCOMMITTED	\$0	\$0	\$0	\$0	
	\$0	\$0	\$0	\$0	
4.04 Builders Risk Insurance					
UNCOMMITTED	\$0	\$0	\$0	\$0	
	\$0	\$0	\$0	\$0	
4.05 DSA Review Fees					
UNCOMMITTED	\$0	\$0	\$0	\$0	
DIVISION OF STATE ARCHITECT	\$5,775	\$5,775	\$5,775	\$0	100.00%
	\$5,775	\$5,775	\$5,775	\$0	100.00%
Total 390-9520 Canyon HS Interim Kitchen (DSA 04-118418)	\$328,870	\$328,861	\$88,004	\$82,229	26.76%
390-9520 Canyon HS Phase II Planning and Design					
1. Design Cost					
1.01 Architect					
UNCOMMITTED	\$0	\$0	\$0	\$0	
	\$0	\$0	\$0	\$0	
5. Contingency					
5.01 Construction Contingency					
UNCOMMITTED	\$0	\$0	\$0	\$0	
	\$0	\$0	\$0	\$0	
5.02 Project Contingency					
UNCOMMITTED	\$663,500	\$0	\$0	\$0	
GKKWORKS CANNON DESIGN	\$0	\$43,500	\$0	\$0	
	\$663,500	\$43,500	\$0	\$0	0.00%
Total 390-9520 Canyon HS Phase II Planning and Design	\$663,500	\$43,500	\$0	\$0	0.00%
390-TBD Canyon HS Unallocated Funds					
1. Unallocated Bond Funds					
1.01 Unbudgeted Bond Funds					
UNCOMMITTED	\$2,441,413	\$0	\$0	\$0	
	\$2,441,413	\$0	\$0	\$0	0.00%



Measure S Bond Program
Financial Report for August 2019
Budget vs Actuals - By School and Budget Category with Vendor Detail

QSS Data thru 8/30/2019

Total 390-TBD Canyon HS Unallocated Funds	\$2,441,413	\$0	\$0	\$0	0.00%
---	-------------	-----	-----	-----	-------

Canyon High School	\$72,000,000	\$48,017,022	\$5,975,777	\$1,584,570	8.30%
El Modena High School					

391-0000 El Modena HS IP Surveillance Camera and Systems

1. FF&E (IP Surveillance Camera)

5000+ New Equipment

UNCOMMITTED	\$271	\$0	\$0	\$0	
CDW GOVERNMENT INC (Parts for IP Camera Systems)	\$39,388	\$39,388	\$39,388	\$0	100.00%
DIGITAL NETWORKS GROUP INC (F/I IP Camera Software)	\$11,719	\$11,719	\$11,719	\$0	100.00%
INTER-PACIFIC INC (Install IP Based Surveillance Camera System)	\$30,073	\$30,073	\$30,073	\$0	100.00%
	\$81,450	\$81,179	\$81,179	\$0	99.67%

2. Contingency

2.01 Project Contingency

UNCOMMITTED	\$6,299	\$0	\$0	\$0	
	\$6,299	\$0	\$0	\$0	0.00%

Total 391-0000 El Modena HS IP Surveillance Camera and Systems	\$87,749	\$81,179	\$81,179	\$0	92.51%
--	----------	----------	----------	-----	--------

391-9520 El Modena HS Science Center

1. Design Cost

1.01 Architect

UNCOMMITTED	\$0	\$0	\$0	\$0	
HARLEY ELLIS DEVEREAUX	\$1,954,014	\$1,954,014	\$1,478,123	\$0	75.65%
LIONAKIS (Program Master Specifications)	\$14,059	\$14,059	\$14,059	\$0	100.00%
	\$1,968,073	\$1,968,073	\$1,492,182	\$0	75.82%

2. Construction Cost

2.01 Construction

UNCOMMITTED	\$56,979	\$0	\$0	\$0	
ACCO ENGINEERED SYSTEMS INC	\$355,544	\$355,544	\$0	\$0	0.00%
ANGELES CONTRACTOR, INC	\$25,818,000	\$25,818,000	\$1,480,587	\$1,480,587	5.73%
FAIR PLAY SCOREBOARDS	\$17,694	\$17,694	\$0	\$0	0.00%
	\$26,248,217	\$26,191,238	\$1,480,587	\$1,480,587	5.64%

3. Program and Construction Management

3.01 Program Management Fees

UNCOMMITTED	\$602,640	\$0	\$0	\$0	
CUMMING CONSTRUCTION MGMT INC	\$424,145	\$1,026,785	\$422,973	\$39,104	99.72%
	\$1,026,785	\$1,026,785	\$422,973	\$39,104	41.19%

3.02 Construction Management Fees

UNCOMMITTED	\$166,180	\$0	\$0	\$0	
ARCADIS U.S. INC	\$1,620,622	\$1,786,803	\$628,993	\$0	38.81%
CORDOBA CORPORATION	\$74,438	\$74,438	\$15,588	\$15,588	20.94%
	\$1,861,240	\$1,861,240	\$644,581	\$15,588	34.63%



Measure S Bond Program
Financial Report for August 2019
Budget vs Actuals - By School and Budget Category with Vendor Detail

QSS Data thru 8/30/2019

4. Construction Support Costs

4.01 Rental

UNCOMMITTED	\$0	\$0	\$0	\$0	
	\$0	\$0	\$0	\$0	

4.02 Title, Environmental, Stormwater Management

UNCOMMITTED	\$84,517	\$0	\$0	\$0	
CHICAGO TITLE COMPANY	\$1,500	\$1,500	\$1,500	\$0	100.00%
CITY OF ORANGE (PUBLIC WORKS)	\$71	\$71	\$71	\$0	100.00%
CITY OF ORANGE (WATER DIVISION)	\$16,048	\$16,048	\$16,048	\$0	100.00%
ENVIRONMENTAL AUDIT INC	\$10,950	\$10,950	\$8,548	\$0	78.06%
OUSD COST OF INTEREST DISTRIBUTION FY 16/17	\$1	\$1	\$1	\$0	100.00%
	\$113,087	\$28,570	\$26,167	\$0	23.14%

4.03 Commissioning

UNCOMMITTED	\$0	\$0	\$0	\$0	
P2S ENGINEERING INC	\$30,558	\$30,558	\$13,591	\$0	44.48%
	\$30,558	\$30,558	\$13,591	\$0	44.48%

4.04 Builders Risk Insurance

UNCOMMITTED	\$0	\$0	\$0	\$0	
	\$0	\$0	\$0	\$0	

4.05 DSA Review Fees

UNCOMMITTED	\$184,379	\$0	\$0	\$0	
DIVISION OF STATE ARCHITECT	\$306,338	\$306,338	\$306,338	\$0	100.00%
	\$490,717	\$306,338	\$306,338	\$0	62.43%

4.06 Postage, Printing & Advertising

UNCOMMITTED	\$27,496	\$0	\$0	\$0	
AMERICAN REPROGRAPHICS CO LLC	\$19,648	\$19,648	\$15,648	\$0	79.64%
SOUTHERN CALIFORNIA NEWS GROUP	\$2,024	\$2,024	\$2,024	\$0	100.00%
	\$49,168	\$21,672	\$17,672	\$0	35.94%

4.07 DSA Inspection

UNCOMMITTED	\$191,367	\$0	\$0	\$0	
BPI INSPECTION SERVICE	\$238,850	\$238,850	\$19,805	\$19,805	8.29%
	\$430,217	\$238,850	\$19,805	\$19,805	4.60%

4.08 DSA Construction Phase Testing

UNCOMMITTED	\$106,934	\$0	\$0	\$0	
KOURY ENGINEERING & TESTING INC (Geotechnical Engineering)	\$323,283	\$323,283	\$4,628	\$4,628	1.43%
	\$430,217	\$323,283	\$4,628	\$4,628	1.08%

4.09 Relocation

UNCOMMITTED	\$0	\$0	\$0	\$0	
	\$0	\$0	\$0	\$0	

4.10 Labor Compliance

UNCOMMITTED	\$61,460	\$0	\$0	\$0	
	\$61,460	\$0	\$0	\$0	0.00%

4.11 Preliminary Testing (Hazmat, Topo Survey, Geo

UNCOMMITTED	\$399,324	\$0	\$0	\$0	
ALLEGIAN FIRE PROTECTION INC	\$525	\$525	\$525	\$0	100.00%



Measure S Bond Program
Financial Report for August 2019
Budget vs Actuals - By School and Budget Category with Vendor Detail

QSS Data thru 8/30/2019

CALIFORNIA GEOLOGICAL SURVEY (Geology and Seismology Review)	\$3,600	\$3,600	\$3,600	\$0	100.00%
ENVIRONMENTAL NETWORK CORPORATION (Hazardous Material Investigation)	\$6,912	\$6,912	\$0	\$0	0.00%
HARLEY ELLIS DEVEREAUX	\$14,908	\$14,908	\$14,908	\$0	100.00%
NINYO & MOORE	\$29,981	\$29,981	\$0	\$0	0.00%
PCA ARBORISTS & CONSULTANTS INC	\$1,569	\$1,569	\$1,569	\$0	100.00%
THE CONVERSE PROFESSIONAL GROUP (Soils Investigation)	\$30,640	\$30,640	\$30,640	\$0	100.00%
	\$487,459	\$88,135	\$51,242	\$0	10.51%
4.12 Utility Connection Fees (with Local Permittin					
UNCOMMITTED	\$119,254	\$0	\$0	\$0	
SOUTHERN CALIFORNIA EDISON	\$3,665	\$3,665	\$3,665	\$0	100.00%
	\$122,919	\$3,665	\$3,665	\$0	2.98%
4.13 FF&E (Laboratory Tables and Chairs, other)					
UNCOMMITTED	\$983,354	\$0	\$0	\$0	
	\$983,354	\$0	\$0	\$0	0.00%
4.14 Legal Counsel					
UNCOMMITTED	\$61,460	\$0	\$0	\$0	
	\$61,460	\$0	\$0	\$0	0.00%
4.15 Miscellaneous Fees					
UNCOMMITTED	\$0	\$0	\$0	\$0	
	\$0	\$0	\$0	\$0	
5. Contingency					
5.01 Construction Contingency					
UNCOMMITTED	\$2,581,800	\$0	\$0	\$0	
	\$2,581,800	\$0	\$0	\$0	0.00%
5.02 Project Contingency					
UNCOMMITTED	\$1,979,520	\$0	\$0	\$0	
ARCADIS U.S. INC	\$0	\$71,758	\$0	\$0	
	\$1,979,520	\$71,758	\$0	\$0	0.00%
Total 391-9520 El Modena HS Science Center	\$38,926,251	\$32,160,165	\$4,483,431	\$1,559,711	11.52%
391-9520 El Modena HS Phase II Planning and Design					
1. Design Cost					
1.01 Architect					
UNCOMMITTED	\$625	\$0	\$0	\$0	
HARLEY ELLIS DEVEREAUX	\$30,560	\$30,560	\$28,560	\$28,560	93.46%
	\$31,185	\$30,560	\$28,560	\$28,560	91.58%
2. Construction Cost					
2.01 Construction					
UNCOMMITTED	\$0	\$0	\$0	\$0	
	\$0	\$0	\$0	\$0	

5. Contingency



Measure S Bond Program
Financial Report for August 2019
Budget vs Actuals - By School and Budget Category with Vendor Detail

QSS Data thru 8/30/2019

5.01 Construction Contingency

UNCOMMITTED

\$0	\$0	\$0	\$0	
\$0	\$0	\$0	\$0	

5.02 Project Contingency

UNCOMMITTED

\$1,799,375	\$0	\$0	\$0	
\$1,799,375	\$0	\$0	\$0	0.00%

Total 391-9520 El Modena HS Phase II Planning and Design	\$1,830,560	\$30,560	\$28,560	\$28,560	1.56%
---	--------------------	-----------------	-----------------	-----------------	--------------

391-TBD El Modena HS Unallocated Funds

1. Unallocated Bond Funds

1.01 Unbudgeted Bond Funds

UNCOMMITTED

\$31,155,440	\$0	\$0	\$0	
\$31,155,440	\$0	\$0	\$0	0.00%

Total 391-TBD El Modena HS Unallocated Funds	\$31,155,440	\$0	\$0	\$0	0.00%
---	---------------------	------------	------------	------------	--------------

El Modena High School	\$72,000,000	\$32,271,904	\$4,593,170	\$1,588,271	6.38%
------------------------------	---------------------	---------------------	--------------------	--------------------	--------------

Orange High School					
---------------------------	--	--	--	--	--

392-0000 Orange HS IP Surveillance Camera and Systems

1. FF&E (IP Surveillance Camera)

\$5000+ New Equipment

UNCOMMITTED

	\$2,010	\$0	\$0	\$0	
CDW GOVERNMENT INC (Parts for IP Camera Systems)	\$53,662	\$53,662	\$53,662	\$0	100.00%
DIGITAL NETWORKS GROUP INC (F/I IP Camera Software)	\$13,569	\$13,569	\$13,569	\$0	100.00%
INTER-PACIFIC INC (Install IP Based Surveillance Camera System)	\$34,837	\$34,837	\$34,837	\$0	100.00%
	\$104,078	\$102,068	\$102,068	\$0	98.07%

2. Contingency

2.01 Project Contingency

UNCOMMITTED

\$7,710	\$0	\$0	\$0	
\$7,710	\$0	\$0	\$0	0.00%

Total 392-0000 Orange HS IP Surveillance Camera and Systems	\$111,788	\$102,068	\$102,068	\$0	91.30%
--	------------------	------------------	------------------	------------	---------------

392-9520 Orange HS Phase II Planning and Design

1. Design Cost

1.01 Architect

UNCOMMITTED

	\$0	\$0	\$0	\$0	
LIONAKIS (Program Master Specifications)	\$80,500	\$80,500	\$76,138	\$1,808	94.58%
	\$80,500	\$80,500	\$76,138	\$1,808	94.58%

5. Contingency

5.01 Construction Contingency

UNCOMMITTED

\$0	\$0	\$0	\$0	
-----	-----	-----	-----	--



Measure S Bond Program
Financial Report for August 2019
Budget vs Actuals - By School and Budget Category with Vendor Detail

QSS Data thru 8/30/2019

	\$0	\$0	\$0	\$0	
5.02 Project Contingency					
UNCOMMITTED	\$1,450,000	\$0	\$0	\$0	
	\$1,450,000	\$0	\$0	\$0	0.00%
Total 392-9520 Orange HS Phase II Planning and Design	\$1,530,500	\$80,500	\$76,138	\$1,808	4.97%
392-9520 Orange HS Science Bldg (DSA 04-116859)					
1. Design Cost					
1.01 Architect					
UNCOMMITTED	\$563	\$0	\$0	\$0	
LIONAKIS (Program Master Specifications)	\$1,871,513	\$1,871,513	\$1,482,385	\$23,960	79.21%
	\$1,872,076	\$1,871,513	\$1,482,385	\$23,960	79.18%
2. Construction Cost					
2.02 Construction of Science Center					
UNCOMMITTED	\$114	\$0	\$0	\$0	
ACCO ENGINEERED SYSTEMS INC	\$62,883	\$62,883	\$51,675	\$0	82.18%
CITY OF ORANGE (PUBLIC WORKS)	\$2,000	\$2,000	\$2,000	\$0	100.00%
GIANNELLI ELECTRIC INC	\$45,888	\$45,888	\$39,198	\$3,899	85.42%
GRUETT TREE CO INC (Removal of Trees)	\$7,625	\$7,625	\$7,625	\$0	100.00%
INTEGRATED DEMOLITION AND REMEDIATION (Abatement and Demolition)	\$44,800	\$44,800	\$44,800	\$0	100.00%
J & A FENCE (Custodial Storage Fencing)	\$6,885	\$6,885	\$6,885	\$0	100.00%
KYA SERVICES LLC (Install Carpet)	\$0	\$0	\$0	\$0	
OLESK, KEITH (Termite Services)	\$1,500	\$1,500	\$1,500	\$0	100.00%
PINNER CONSTRUCTION	\$26,109,000	\$26,109,000	\$2,878,352	\$2,655,005	11.02%
SOUTHERN CALIFORNIA NEWS GROUP	\$0	\$0	\$0	\$0	
TIME & ALARM SYSTEMS	\$3,100	\$3,100	\$3,100	\$0	100.00%
TRIMARK RAYGAL LLC	\$0	\$0	\$0	\$0	
UNIVERSAL ASPHALT CO (Remove and Patch Asphalt)	\$6,830	\$6,830	\$6,830	\$0	100.00%
	\$26,290,625	\$26,290,510	\$3,041,965	\$2,658,905	11.57%
3. Program and Construction Management					
3.01 Program Management Fees					
UNCOMMITTED	\$862,665	\$0	\$0	\$0	
CUMMING CONSTRUCTION MGMT INC	\$475,823	\$1,338,488	\$474,459	\$39,104	99.71%
	\$1,338,488	\$1,338,488	\$474,459	\$39,104	35.45%
3.02 Construction Management Fees					
UNCOMMITTED	\$502,363	\$0	\$0	\$0	
BALFOUR BEATTY CONSTRUCTION	\$1,063,720	\$1,566,083	\$1,063,720	\$120,397	100.00%
CORDOBA CORPORATION	\$74,438	\$74,438	\$11,165	\$11,165	15.00%
	\$1,640,520	\$1,640,520	\$1,074,885	\$131,562	65.52%
4. Construction Support Costs					
4.01 Rental					
UNCOMMITTED	\$0	\$0	\$0	\$0	
	\$0	\$0	\$0	\$0	



Measure S Bond Program
Financial Report for August 2019
Budget vs Actuals - By School and Budget Category with Vendor Detail

QSS Data thru 8/30/2019

4.02 Title, Environmental, Stormwater Management

UNCOMMITTED	\$94,772	\$0	\$0	\$0	
CHICAGO TITLE COMPANY	\$1,500	\$1,500	\$1,500	\$0	100.00%
OUSD COST OF INTEREST DISTRIBUTION FY 16/17	\$1	\$1	\$1	\$0	100.00%
PLACEWORKS INC	\$52,231	\$52,231	\$52,231	\$0	100.00%
STATE WATER RESOURCES CONTROL BOARD (SWRCB)	\$726	\$726	\$726	\$0	100.00%
	\$149,230	\$54,458	\$54,458	\$0	36.49%

4.03 Commissioning

UNCOMMITTED	\$0	\$0	\$0	\$0	
P2S ENGINEERING INC	\$30,585	\$30,585	\$14,434	\$0	47.19%
	\$30,585	\$30,585	\$14,434	\$0	47.19%

4.04 Builders Risk Insurance

UNCOMMITTED	\$0	\$0	\$0	\$0	
	\$0	\$0	\$0	\$0	

4.05 DSA Review Fees

UNCOMMITTED	\$172,987	\$0	\$0	\$0	
DIVISION OF STATE ARCHITECT	\$254,461	\$254,461	\$254,461	\$0	100.00%
OUSD REVOLVING CASH	\$500	\$500	\$500	\$0	100.00%
	\$427,947	\$254,961	\$254,961	\$0	59.58%

4.06 Postage, Printing & Advertising

UNCOMMITTED	\$36,302	\$0	\$0	\$0	
AMERICAN REPROGRAPHICS CO LLC	\$11,807	\$11,807	\$8,231	\$0	69.71%
SOUTHERN CALIFORNIA NEWS GROUP	\$8,518	\$8,518	\$8,518	\$0	100.00%
	\$56,626	\$20,325	\$16,748	\$0	29.58%

4.07 DSA Inspection

UNCOMMITTED	\$145,585	\$0	\$0	\$0	
KNOWLAND CONSTRUCTION SERVICES	\$323,247	\$323,247	\$75,690	\$75,690	23.42%
	\$468,832	\$323,247	\$75,690	\$75,690	16.14%

4.08 DSA Construction Phase Testing

UNCOMMITTED	\$125,025	\$0	\$0	\$0	
NINYO & MOORE	\$335,032	\$335,032	\$39,991	\$32,199	11.94%
	\$460,057	\$335,032	\$39,991	\$32,199	8.69%

4.09 Relocation

UNCOMMITTED	\$0	\$0	\$0	\$0	
	\$0	\$0	\$0	\$0	

4.10 Labor Compliance

UNCOMMITTED	\$81,902	\$0	\$0	\$0	
	\$81,902	\$0	\$0	\$0	0.00%

4.11 Preliminary Testing (Hazmat, Topo Survey, Geo)

UNCOMMITTED	\$580,704	\$0	\$0	\$0	
CALIFORNIA GEOLOGICAL SURVEY (Geology and Seismology Review)	\$3,600	\$3,600	\$3,600	\$0	100.00%
KOURY ENGINEERING & TESTING INC (Geotechnical Engineering)	\$13,300	\$13,300	\$13,300	\$0	100.00%
PENCO ENGINEERING INC (Topographical Survey Services)	\$42,350	\$42,350	\$41,070	\$0	96.98%
RMA GROUP (dba SITESCAN)	\$49,533	\$49,533	\$49,533	\$0	100.00%
	\$689,487	\$108,783	\$107,503	\$0	15.59%

4.12 Utility Connection Fees (with Local Permittin



Measure S Bond Program
Financial Report for August 2019
Budget vs Actuals - By School and Budget Category with Vendor Detail

QSS Data thru 8/30/2019

UNCOMMITTED	\$154,391	\$0	\$0	\$0	
CITY OF ORANGE (PUBLIC WORKS)	\$2,500	\$2,500	\$2,500	\$0	100.00%
SOUTHERN CALIFORNIA EDISON	\$6,912	\$6,912	\$6,912	\$0	100.00%
	\$163,803	\$9,412	\$9,412	\$0	5.75%
4.13 FF&E (Laboratory Tables and Chairs, other)					
UNCOMMITTED	\$1,294,158	\$0	\$0	\$0	
CONEXWEST	\$9,466	\$9,466	\$9,419	\$0	99.51%
VORTEX INDUSTRIES, INC.	\$6,804	\$6,804	\$6,804	\$0	100.00%
	\$1,310,428	\$16,270	\$16,223	\$0	1.24%
4.14 Legal Counsel					
UNCOMMITTED	\$81,902	\$0	\$0	\$0	
	\$81,902	\$0	\$0	\$0	0.00%
4.15 Miscellaneous Fees					
UNCOMMITTED	\$0	\$0	\$0	\$0	
	\$0	\$0	\$0	\$0	
5. Contingency					
5.01 Construction Contingency					
UNCOMMITTED	\$2,610,900	\$0	\$0	\$0	
	\$2,610,900	\$0	\$0	\$0	0.00%
5.02 Project Contingency					
UNCOMMITTED	\$5,178,181	\$0	\$0	\$0	
	\$5,178,181	\$0	\$0	\$0	0.00%
Total 392-9520 Orange HS Science Bldg (DSA 04-116859)	\$42,851,590	\$32,294,102	\$6,663,112	\$2,961,420	15.55%
392-9520 Orange HS Site Improvements (DSA 04-116673)					
1. Design Cost					
1.01 Architect					
UNCOMMITTED	\$0	\$0	\$0	\$0	
LIONAKIS (Program Master Specifications)	\$450,189	\$450,189	\$440,430	\$0	97.83%
SILVER CREEK INDUSTRIES INC (Engineering for Warming Kitchen Relocatable Building)	\$29,682	\$29,682	\$29,682	\$0	100.00%
	\$479,871	\$479,871	\$470,112	\$0	97.97%
2. Construction Cost					
2.01 Construction					
UNCOMMITTED	\$0	\$0	\$0	\$0	
ACCO ENGINEERED SYSTEMS INC	\$209,074	\$209,074	\$209,074	\$0	100.00%
KYA SERVICES LLC (Install Carpet)	\$20,824	\$20,824	\$9,564	\$0	45.93%
SWINERTON BUILDERS	\$6,556,428	\$6,556,428	\$6,555,566	\$394,285	99.99%
TRIMARK RAYGAL LLC	\$89,860	\$89,860	\$89,860	\$4,493	100.00%
	\$6,876,186	\$6,876,186	\$6,864,064	\$398,778	99.82%
3. Program and Construction Management					
3.01 Program Management Fees					
UNCOMMITTED	\$0	\$0	\$0	\$0	
	\$0	\$0	\$0	\$0	



Measure S Bond Program
Financial Report for August 2019
Budget vs Actuals - By School and Budget Category with Vendor Detail

QSS Data thru 8/30/2019

3.02 Construction Management Fees

UNCOMMITTED

\$0	\$0	\$0	\$0	
\$0	\$0	\$0	\$0	

4. Construction Support Costs

4.01 Rental

UNCOMMITTED

\$0	\$0	\$0	\$0	
\$0	\$0	\$0	\$0	

4.02 Title, Environmental, Stormwater Management

UNCOMMITTED

ORANGE COUNTY HEALTH CARE AGENCY

\$0	\$0	\$0	\$0	
\$1,470	\$1,470	\$1,470	\$0	100.00%
\$1,470	\$1,470	\$1,470	\$0	100.00%

4.03 Commissioning

UNCOMMITTED

P2S ENGINEERING INC

\$0	\$0	\$0	\$0	
\$4,755	\$4,755	\$2,419	\$0	50.88%
\$4,755	\$4,755	\$2,419	\$0	50.88%

4.04 Builders Risk Insurance

UNCOMMITTED

\$0	\$0	\$0	\$0	
\$0	\$0	\$0	\$0	

4.05 DSA Review Fees

UNCOMMITTED

DIVISION OF STATE ARCHITECT

\$3,853	\$0	\$0	\$0	
\$94,585	\$94,585	\$94,585	\$67,155	100.00%
\$98,438	\$94,585	\$94,585	\$67,155	96.09%

4.06 Postage, Printing & Advertising

UNCOMMITTED

AMERICAN REPROGRAPHICS CO LLC

SOUTHERN CALIFORNIA NEWS GROUP

\$1	\$0	\$0	\$0	
\$7,630	\$7,630	\$7,206	\$0	94.45%
\$1,264	\$1,264	\$1,264	\$0	100.00%
\$8,895	\$8,894	\$8,470	\$0	95.23%

4.07 DSA Inspection

UNCOMMITTED

KNOWLAND CONSTRUCTION SERVICES

\$0	\$0	\$0	\$0	
\$104,480	\$104,480	\$96,985	\$0	92.83%
\$104,480	\$104,480	\$96,985	\$0	92.83%

4.08 DSA Construction Phase Testing

UNCOMMITTED

NINYO & MOORE

\$0	\$0	\$0	\$0	
\$113,255	\$113,255	\$112,544	\$0	99.37%
\$113,255	\$113,255	\$112,544	\$0	99.37%

4.09 Relocation

UNCOMMITTED

\$0	\$0	\$0	\$0	
\$0	\$0	\$0	\$0	

4.10 Labor Compliance

UNCOMMITTED

\$0	\$0	\$0	\$0	
\$0	\$0	\$0	\$0	

4.11 Preliminary Testing (Hazmat, Topo Survey, Geo

UNCOMMITTED

ENVIRONMENTAL NETWORK CORPORATION (Hazardous Material Investigation)

\$0	\$0	\$0	\$0	
\$9,100	\$9,100	\$6,680	\$0	73.41%
\$9,100	\$9,100	\$6,680	\$0	73.41%

4.12 Utility Connection Fees (with Local Permittin



Measure S Bond Program
Financial Report for August 2019
Budget vs Actuals - By School and Budget Category with Vendor Detail

QSS Data thru 8/30/2019

UNCOMMITTED	\$0	\$0	\$0	\$0	
	\$0	\$0	\$0	\$0	
4.13 FF&E (Laboratory Tables and Chairs, other)					
UNCOMMITTED	\$0	\$0	\$0	\$0	
	\$0	\$0	\$0	\$0	
4.14 Legal Counsel					
UNCOMMITTED	\$0	\$0	\$0	\$0	
	\$0	\$0	\$0	\$0	
5. Contingency					
5.01 Construction Contingency					
UNCOMMITTED	\$11,778	\$0	\$0	\$0	
	\$11,778	\$0	\$0	\$0	0.00%
5.02 Project Contingency					
UNCOMMITTED	\$298,271	\$0	\$0	\$0	
	\$298,271	\$0	\$0	\$0	0.00%
Total 392-9520 Orange HS Site Improvements (DSA 04-116673)	\$8,006,498	\$7,692,596	\$7,657,329	\$465,933	95.64%
392-TBD Orange HS Unallocated Funds					
1. Unallocated Bond Funds					
1.01 Unbudgeted Bond Funds					
UNCOMMITTED	\$19,499,624	\$0	\$0	\$0	
	\$19,499,624	\$0	\$0	\$0	0.00%
Total 392-TBD Orange HS Unallocated Funds	\$19,499,624	\$0	\$0	\$0	0.00%
Orange High School	\$72,000,000	\$40,169,266	\$14,498,647	\$3,429,160	20.14%
Villa Park High School					
394-0000 Villa Park HS IP Surveillance Camera and Systems					
1. FF&E (IP Surveillance Camera)					
\$5000+ New Equipment					
UNCOMMITTED	\$1,188	\$0	\$0	\$0	
CDW GOVERNMENT INC (Parts for IP Camera Systems)	\$32,182	\$32,182	\$32,182	\$0	100.00%
DIGITAL NETWORKS GROUP INC (F/I IP Camera Software)	\$8,635	\$8,635	\$8,635	\$0	100.00%
INTER-PACIFIC INC (Install IP Based Surveillance Camera System)	\$22,133	\$22,133	\$22,133	\$0	100.00%
	\$64,137	\$62,949	\$62,949	\$0	98.15%
2. Contingency					
2.01 Project Contingency					
UNCOMMITTED	\$4,930	\$0	\$0	\$0	
	\$4,930	\$0	\$0	\$0	0.00%
Total 394-0000 Villa Park HS IP Surveillance Camera and Systems	\$69,067	\$62,949	\$62,949	\$0	91.14%
394-9520 Villa Park HS Science Center (DSA 04-117022)					



Measure S Bond Program
Financial Report for August 2019
Budget vs Actuals - By School and Budget Category with Vendor Detail

QSS Data thru 8/30/2019

1. Design Cost

1.01 Architect

UNCOMMITTED	\$70,598	\$0	\$0	\$0	
DKS ASSOCIATES	\$78,310	\$78,310	\$66,213	\$20,641	84.55%
LIONAKIS (Program Master Specifications)	\$14,059	\$14,059	\$14,059	\$0	100.00%
LPA INC	\$2,161,858	\$2,161,858	\$1,558,074	\$30,299	72.07%
	\$2,324,825	\$2,254,227	\$1,638,346	\$50,940	70.47%

2. Construction Cost

2.01 Construction

UNCOMMITTED	\$199,351	\$0	\$0	\$0	
ACCO ENGINEERED SYSTEMS INC	\$150,829	\$150,829	\$0	\$0	0.00%
ANGELES CONTRACTOR, INC	\$20,179,504	\$20,179,504	\$1,395,317	\$871,208	6.91%
	\$20,529,684	\$20,330,333	\$1,395,317	\$871,208	6.80%

3. Program and Construction Management

3.01 Program Management Fees

UNCOMMITTED	\$693,841	\$0	\$0	\$0	
CUMMING CONSTRUCTION MGMT INC	\$461,294	\$1,155,135	\$460,000	\$42,232	99.72%
	\$1,155,135	\$1,155,135	\$460,000	\$42,232	39.82%

3.02 Construction Management Fees

UNCOMMITTED	\$284,581	\$0	\$0	\$0	
CORDOBA CORPORATION	\$1,459,850	\$1,571,242	\$849,987	\$206,095	58.22%
	\$1,744,430	\$1,571,242	\$849,987	\$206,095	48.73%

4. Construction Support Costs

4.01 Rental

UNCOMMITTED	\$34,606	\$0	\$0	\$0	
	\$34,606	\$0	\$0	\$0	0.00%

4.02 Title, Environmental, Stormwater Management

UNCOMMITTED	\$13,840	\$0	\$0	\$0	
CHICAGO TITLE COMPANY	\$750	\$750	\$750	\$0	100.00%
OUSD COST OF INTEREST DISTRIBUTION FY 16/17	\$1	\$1	\$1	\$0	100.00%
PLACEWORKS INC	\$87,059	\$87,059	\$73,237	\$0	84.12%
	\$101,650	\$87,810	\$73,987	\$0	72.79%

4.03 Commissioning

UNCOMMITTED	\$0	\$0	\$0	\$0	
P2S ENGINEERING INC	\$31,635	\$31,635	\$15,970	\$0	50.48%
	\$31,635	\$31,635	\$15,970	\$0	50.48%

4.04 Builders Risk Insurance

UNCOMMITTED	\$0	\$0	\$0	\$0	
	\$0	\$0	\$0	\$0	

4.05 DSA Review Fees

UNCOMMITTED	\$29,470	\$0	\$0	\$0	
DIVISION OF STATE ARCHITECT	\$289,250	\$289,250	\$289,250	\$0	100.00%
	\$318,720	\$289,250	\$289,250	\$0	90.75%

4.06 Postage, Printing & Advertising



Measure S Bond Program
Financial Report for August 2019
Budget vs Actuals - By School and Budget Category with Vendor Detail

QSS Data thru 8/30/2019

UNCOMMITTED	\$27,944	\$0	\$0	\$0	
AMERICAN REPROGRAPHICS CO LLC	\$14,483	\$14,483	\$10,483	\$0	72.38%
SOUTHERN CALIFORNIA NEWS GROUP	\$1,768	\$1,768	\$1,768	\$0	100.00%
	\$44,195	\$16,251	\$12,251	\$0	27.72%
4.07 DSA Inspection					
UNCOMMITTED	\$24,947	\$0	\$0	\$0	
BPI INSPECTION SERVICE	\$318,495	\$318,495	\$17,765	\$6,800	5.58%
	\$343,442	\$318,495	\$17,765	\$6,800	5.17%
4.08 DSA Construction Phase Testing					
UNCOMMITTED	\$86,707	\$0	\$0	\$0	
NINYO & MOORE	\$263,869	\$263,869	\$7,730	\$0	2.93%
	\$350,576	\$263,869	\$7,730	\$0	2.20%
4.09 Relocation					
UNCOMMITTED	\$360	\$0	\$0	\$0	
	\$360	\$0	\$0	\$0	0.00%
4.10 Labor Compliance					
UNCOMMITTED	\$55,244	\$0	\$0	\$0	
	\$55,244	\$0	\$0	\$0	0.00%
4.11 Preliminary Testing (Hazmat, Topo Survey, Geo)					
UNCOMMITTED	\$351,437	\$0	\$0	\$0	
CALIFORNIA GEOLOGICAL SURVEY (Geology and Seismology Review)	\$3,600	\$3,600	\$3,600	\$0	100.00%
ENVIRONMENTAL NETWORK CORPORATION (Hazardous Material Investigation)	\$3,140	\$3,140	\$0	\$0	0.00%
LEIGHTON CONSULTING INC (Geotechnical Engineering)	\$20,000	\$20,000	\$16,549	\$0	82.75%
PSOMAS (Topographical Survey)	\$27,000	\$27,000	\$21,034	\$0	77.90%
RMA GROUP (dba SITESCAN)	\$53,125	\$53,125	\$19,100	\$0	35.95%
SPECTRUM FIRE PROTECTION (Fire Hydrant Flow Test)	\$1,000	\$1,000	\$1,000	\$0	100.00%
	\$459,302	\$107,865	\$61,283	\$0	13.34%
4.12 Utility Connection Fees (with Local Permittin					
UNCOMMITTED	\$110,488	\$0	\$0	\$0	
	\$110,488	\$0	\$0	\$0	0.00%
4.13 FF&E (Laboratory Tables and Chairs, other)					
UNCOMMITTED	\$871,544	\$0	\$0	\$0	
CULVER-NEWLIN INC	\$12,359	\$12,359	\$12,359	\$0	100.00%
	\$883,903	\$12,359	\$12,359	\$0	1.40%
4.14 Legal Counsel					
UNCOMMITTED	\$55,244	\$0	\$0	\$0	
	\$55,244	\$0	\$0	\$0	0.00%
5. Contingency					
5.01 Construction Contingency					
UNCOMMITTED	\$2,396,894	\$0	\$0	\$0	
	\$2,396,894	\$0	\$0	\$0	0.00%
5.02 Project Contingency					
UNCOMMITTED	\$7,762,037	\$0	\$0	\$0	
	\$7,762,037	\$0	\$0	\$0	0.00%



Measure S Bond Program
Financial Report for August 2019
Budget vs Actuals - By School and Budget Category with Vendor Detail

QSS Data thru 8/30/2019

Total 394-9520 Villa Park HS Science Center (DSA 04-117022)	\$38,702,370	\$26,438,470	\$4,834,244	\$1,177,275	12.49%
---	--------------	--------------	-------------	-------------	--------

394-9520 Villa Park HS Interim Housing (DSA 04-116788)

1. Design Cost

1.01 Architect

UNCOMMITTED	\$0	\$0	\$0	\$0	
LPA INC	\$70,000	\$70,000	\$70,000	\$0	100.00%
	\$70,000	\$70,000	\$70,000	\$0	100.00%

2. Construction Cost

2.01 Construction

UNCOMMITTED	\$0	\$0	\$0	\$0	
ACCO ENGINEERED SYSTEMS INC	\$36,527	\$36,527	\$0	\$0	0.00%
ANGELES CONTRACTOR, INC	\$1,070,302	\$1,070,302	\$1,064,669	\$279,508	99.47%
	\$1,106,829	\$1,106,829	\$1,064,669	\$279,508	96.19%

3. Program and Construction Management

3.01 Program Management Fees

UNCOMMITTED	\$0	\$0	\$0	\$0	
	\$0	\$0	\$0	\$0	

3.02 Construction Management Fees

UNCOMMITTED	\$0	\$0	\$0	\$0	
	\$0	\$0	\$0	\$0	

4. Construction Support Costs

4.01 Rental

UNCOMMITTED	\$0	\$0	\$0	\$0	
ELITE MODULAR LEASING & SALES INC	\$444,082	\$444,082	\$253,237	\$0	57.02%
	\$444,082	\$444,082	\$253,237	\$0	57.02%

4.02 Title, Environmental, Stormwater Management

UNCOMMITTED	\$0	\$0	\$0	\$0	
	\$0	\$0	\$0	\$0	

4.03 Commissioning

UNCOMMITTED	\$0	\$0	\$0	\$0	
	\$0	\$0	\$0	\$0	

4.05 DSA Review Fees

UNCOMMITTED	\$2,812	\$0	\$0	\$0	
DIVISION OF STATE ARCHITECT	\$18,116	\$18,116	\$18,116	\$0	100.00%
	\$20,928	\$18,116	\$18,116	\$0	86.56%

4.06 Postage, Printing & Advertising

UNCOMMITTED	\$0	\$0	\$0	\$0	
	\$0	\$0	\$0	\$0	

4.07 DSA Inspection

UNCOMMITTED	\$0	\$0	\$0	\$0	
BPI INSPECTION SERVICE	\$43,265	\$43,265	\$43,265	\$6,800	100.00%
	\$43,265	\$43,265	\$43,265	\$6,800	100.00%

4.08 DSA Construction Phase Testing



Measure S Bond Program
Financial Report for August 2019
Budget vs Actuals - By School and Budget Category with Vendor Detail

QSS Data thru 8/30/2019

UNCOMMITTED	\$0	\$0	\$0	\$0	
NINYO & MOORE	\$36,131	\$36,131	\$36,131	\$0	100.00%
	\$36,131	\$36,131	\$36,131	\$0	100.00%
4.09 Relocation Services (Charged to District)					
UNCOMMITTED	\$0	\$0	\$0	\$0	
Beltmann Group, Inc.	\$4,640	\$4,640	\$4,640	\$4,640	100.00%
	\$4,640	\$4,640	\$4,640	\$4,640	100.00%
4.11 Preliminary Testing (Hazmat, Topo, Geo etc)					
UNCOMMITTED	\$0	\$0	\$0	\$0	
	\$0	\$0	\$0	\$0	
4.12 Utility Connection Fees (Local Permitting)					
UNCOMMITTED	\$0	\$0	\$0	\$0	
	\$0	\$0	\$0	\$0	
4.13 FF&E (Laboratory Tables and Chairs, other)					
UNCOMMITTED	\$0	\$0	\$0	\$0	
	\$0	\$0	\$0	\$0	
4.14 Legal Counsel					
UNCOMMITTED	\$0	\$0	\$0	\$0	
	\$0	\$0	\$0	\$0	
5. Contingency					
5.01 Construction Contingency					
UNCOMMITTED	\$0	\$0	\$0	\$0	
	\$0	\$0	\$0	\$0	
5.02 Project Contingency					
UNCOMMITTED	\$0	\$0	\$0	\$0	
	\$0	\$0	\$0	\$0	
Total 394-9520 Villa Park HS Interim Housing (DSA 04-116788)	\$1,725,875	\$1,723,063	\$1,490,059	\$290,948	86.34%
394-9520 Villa Park HS Parking and Drop Off (DSA 04-118521)					
1. Design Cost					
1.01 Architect					
UNCOMMITTED	\$0	\$0	\$0	\$0	
LPA INC	\$107,305	\$107,305	\$44,873	\$25,363	41.82%
	\$107,305	\$107,305	\$44,873	\$25,363	41.82%
2. Construction Cost					
2.01 Construction					
UNCOMMITTED	\$0	\$0	\$0	\$0	
ANGELES CONTRACTOR, INC	\$2,750,000	\$2,750,000	\$0	\$0	0.00%
	\$2,750,000	\$2,750,000	\$0	\$0	0.00%
3. Program and Construction Management					
3.01 Program Management Fees					
UNCOMMITTED	\$0	\$0	\$0	\$0	
	\$0	\$0	\$0	\$0	



Measure S Bond Program
Financial Report for August 2019
Budget vs Actuals - By School and Budget Category with Vendor Detail

QSS Data thru 8/30/2019

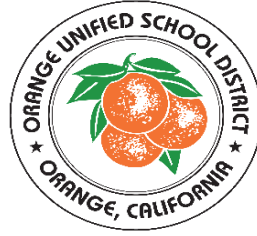
3.02 Construction Management Fees					
UNCOMMITTED	\$0	\$0	\$0	\$0	
	\$0	\$0	\$0	\$0	
4. Construction Support Costs					
4.02 Title, Environmental, Stormwater Management					
UNCOMMITTED	\$0	\$0	\$0	\$0	
	\$0	\$0	\$0	\$0	
4.03 Commissioning					
UNCOMMITTED	\$0	\$0	\$0	\$0	
	\$0	\$0	\$0	\$0	
4.05 DSA Review Fees					
UNCOMMITTED	\$0	\$0	\$0	\$0	
DIVISION OF STATE ARCHITECT	\$37,450	\$37,450	\$37,450	\$37,450	100.00%
	\$37,450	\$37,450	\$37,450	\$37,450	100.00%
5. Contingency					
5.01 Construction Contingency					
UNCOMMITTED	\$0	\$0	\$0	\$0	
	\$0	\$0	\$0	\$0	
5.02 Project Contingency					
UNCOMMITTED	\$0	\$0	\$0	\$0	
	\$0	\$0	\$0	\$0	
Total 394-9520 Villa Park HS Parking and Drop Off (DSA 04-118521)	\$2,894,755	\$2,894,755	\$82,323	\$62,813	2.84%
394-9520 Villa Park HS Phase II Planning and Design					
1. Design Cost					
1.01 Architect					
UNCOMMITTED	\$0	\$0	\$0	\$0	
LPA INC	\$77,000	\$77,000	\$74,480	\$9,880	96.73%
	\$77,000	\$77,000	\$74,480	\$9,880	96.73%
5. Contingency					
5.01 Construction Contingency					
UNCOMMITTED	\$0	\$0	\$0	\$0	
	\$0	\$0	\$0	\$0	
5.02 Project Contingency					
UNCOMMITTED	\$1,800,000	\$0	\$0	\$0	
	\$1,800,000	\$0	\$0	\$0	0.00%
Total 394-9520 Villa Park HS Phase II Planning and Design	\$1,877,000	\$77,000	\$74,480	\$9,880	3.97%
394-TBD Villa Park Unallocated Funds					
1. Unallocated Bond Funds					
1.01 Unbudgeted Bond Funds					
UNCOMMITTED	\$26,730,933	\$0	\$0	\$0	
	\$26,730,933	\$0	\$0	\$0	0.00%



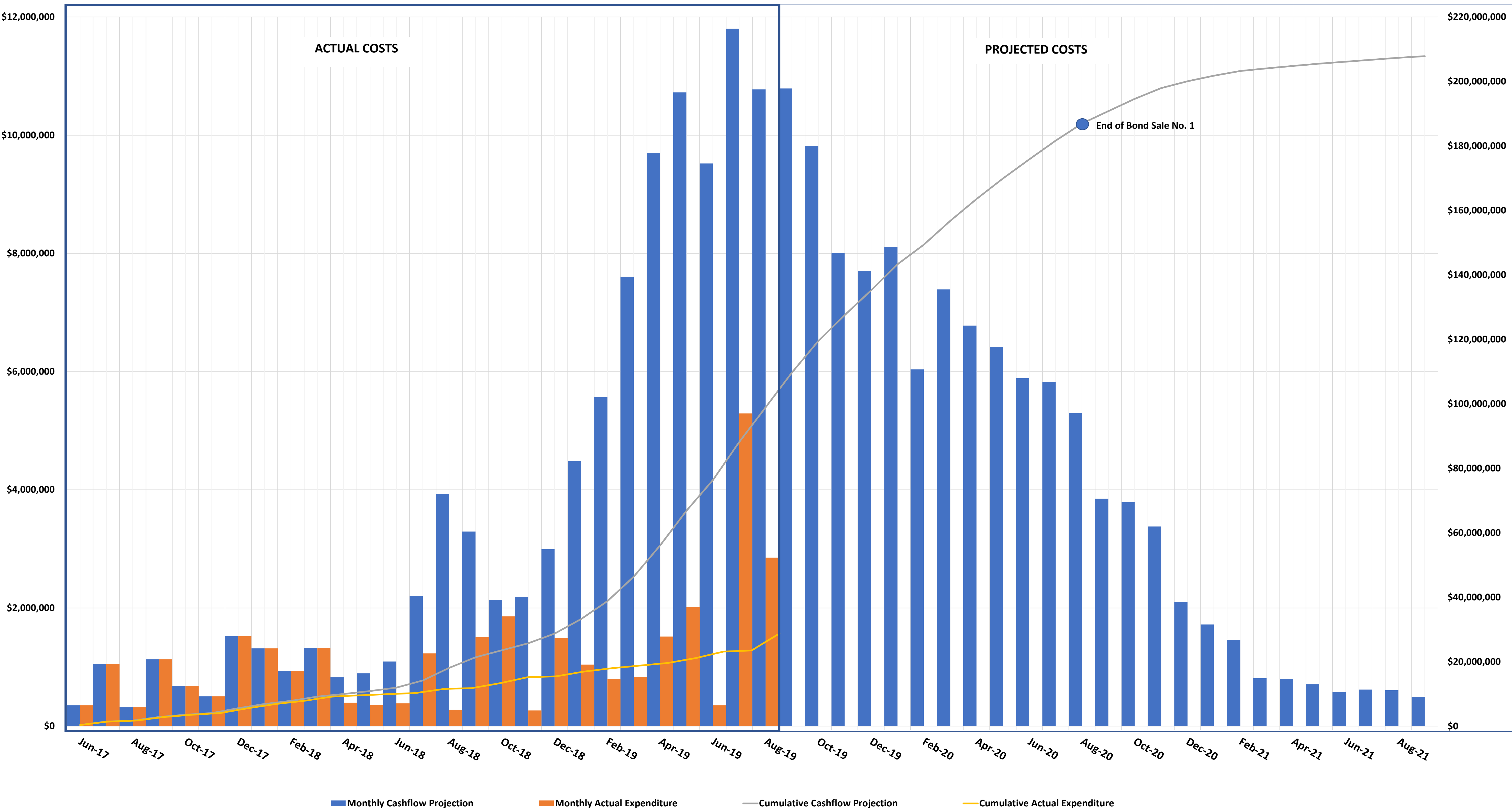
Measure S Bond Program
Financial Report for August 2019
Budget vs Actuals - By School and Budget Category with Vendor Detail

QSS Data thru 8/30/2019

Total 394-TBD Villa Park Unallocated Funds	\$26,730,933	\$0	\$0	\$0	0.00%
Villa Park High School	\$72,000,000	\$31,196,238	\$6,544,055	\$1,540,916	9.09%



MEASURE S BOND PROGRAM - SCIENCE CENTER (PHASE I) CASH FLOW PROJECTION
Actual Costs thru August 31, 2019
Projected Costs thru September 30, 2021



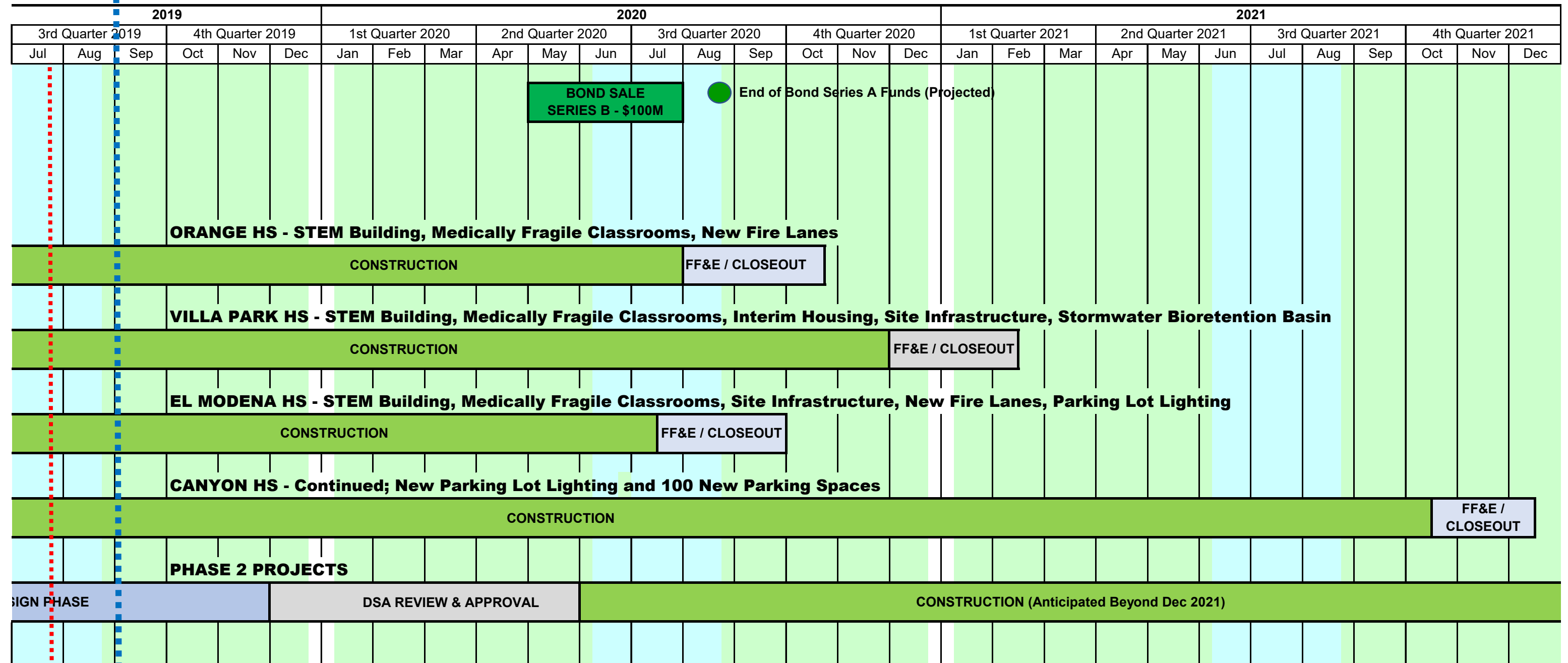
2016			2017												2018												2019												
4th Quarter 2016			1st Quarter 2017			2nd Quarter 2017			3rd Quarter 2017			4th Quarter 2017			1st Quarter 2018			2nd Quarter 2018			3rd Quarter 2018			4th Quarter 2018			1st Quarter 2019			2nd Quarter 2019									
Oct	Nov	Dec	Jan	Feb	Mar	Apr	May	Jun	Jul	Aug	Sep	Oct	Nov	Dec	Jan	Feb	Mar	Apr	May	Jun	Jul	Aug	Sep	Oct	Nov	Dec	Jan	Feb	Mar	Apr	May	Jun							
			BOND SALE SERIES A - \$188M																																				
			ORANGE HS - Site Infrastructure, Move Relocatable Buildings, Bus Drop-Off, Restroom Renovation & Satellite Kitchen																																				
			PROGRAM PHASE			DESIGN PHASE						DSA REVIEW & APPROVAL						BID & AWARD			INFRASTRUCTURE						SATELLITE KITCHEN CONSTRUCTION						FF&E/CLOSEOUT						
			ORANGE HS - STEM Building, Medically Fragile Classrooms, New Fire Lanes																																				
			PROGRAM PHASE			DESIGN PHASE												DSA REVIEW & APPROVAL						BID & AWARD						CONSTRUCTION									
			VILLA PARK HS - STEM Building, Medically Fragile Classrooms, Interim Housing, Site Infrastructure, Stormwater Bioretention Basin																																				
			PROGRAM PHASE					DESIGN PHASE												DSA REVIEW & APPROVAL						BID & AWARD						CONSTRUCTION							
			EL MODENA HS - STEM Building, Medically Fragile Classrooms, Site Infrastructure, New Fire Lanes, Parking Lot Lighting																																				
			PROGRAM PHASE				DESIGN PHASE												DSA REVIEW & APPROVAL						BID & AWARD						CONSTRUCTION								
			CANYON HS - STEM Building, Site Infrastructure, Temporary Kitchen, New Classrooms, Administration, MPR Entry, Food Service, Drop-Off Circulation,																																				
PROGRAM PHASE					DESIGN PHASE															DSA REVIEW & APPROVAL						BID & AWARD													
PHASE 2 PROJECTS																				PROGRAM PHASE										CONCEPTUAL / DES									

- Bond Measure S Passes by 62% on 11/8/16



MEASURE S BOND PROGRAM - PROGRAM SCHEDULE SUMMARY

TODAY



TODAY

Phase II Design & Budget Board Approved 7/25/19 for each HS project;

- Orange HS
- El Modena HS
- Villa Park HS
- Canyon HS

Board of Education

Alexia Deligianni-Brydges, Ed. D, President

Kathryn A. Moffat, Vice-President

Kris Erickson

Andrea Yamasaki

Rick Ledesma

John Ortega

Brenda Lebsack

Gunn Marie Hansen, Ph.D.

Superintendent

David A. Rivera

Assistant Superintendent/CBO

Business Services

Scott Harvey

Senior Executive Director

Administrative Services



Facilities & Planning Department

Measure S Bond Program

726 W. Collins Avenue

Orange, CA 92867

T: (714) 628-4500