



ORANGE UNIFIED SCHOOL DISTRICT

Measure S Bond Program

September 2021 Monthly Progress Report



PERIOD COVERED:
September 1-30, 2021

FISCAL YEAR
FY 2021-2022

PROGRESS REPORT NO.
PR-051-2021-051

PREPARED BY:

CUMMING
Building Value Through Expertise



TABLE OF CONTENTS

1.0 Executive Summary

1.1 Program Summary

1.2 Program Highlights/Key Milestones

1.3 Look Ahead (next 90 days)

2.0 Project Status Report

Canyon HS – Science Center

El Modena HS – Science Center

Orange HS – Utility Infrastructure (Increment # 1)

Orange HS – Science Center (Increment # 2)

Villa Park HS – Interim Housing & Science Center

3.0 Financial Report

3.1 Project Cost Estimate

- Budget vs Actuals with Vendor details per High School

3.2 Cash Flow Projections

4.0 Program Schedule Summary

4.1 Phase I Schedule Summary

4.2 Phase II Schedule Summary



1.0 EXECUTIVE SUMMARY

1.1 Program Summary

Division of State Architects (DSA) approval to establish Phase 1 design criteria completed as follows:

- (Completed) September 22, 2020 - El Modena HS Phase 1 Quad (04-119124)
- (Completed) October 24, 2019 - Villa Park HS New Parking and Drop Off (04-118521).
- (Completed) June 25, 2019 - Orange HS Custom Tensile Fabric Shade Structures (04-118351)
- (Completed) May 2, 2019 - Canyon HS Interim Modular Kitchen (04-118418)
- (Completed) January 31, 2019 - Canyon HS Science Center (04-117300)
- (Completed) November 6, 2018 - El Modena HS Science Center (04-117098)
- (Completed) August 16, 2018 - Villa Park HS Science Center (04-117022)
- (Completed) July 12, 2018 - Orange HS Science Center (Increment # 2) (04-116859)
- (Completed) April 10, 2018 - Orange HS Increment # 1 (Satellite Kitchen) (04-116673.2)
- (Completed) March 1, 2018 - Orange HS Increment #1 (Infrastructure Upgrades, Move Relocatable Buildings, Bus Drop-Off, Restroom Renovation Project) (04-116673.1)
- (Completed) February 7, 2018 - Villa Park HS Interim Housing (DSA Application #04-116788)

Phase 1 construction started / completed, as follows:

- (Construction Start - June 15, 2018 – Orange HS Site Infrastructure (Increment #1)
 - Completed September 4, 2019 – Orange HS Site Infrastructure (Increment #1) (04-116673.1)
- (Construction Start) January 7, 2019 – Villa Park HS (Interim Housing and Science Center)
 - Completed April 26, 2019 – Install ten (10) Portable Modular Buildings (04-116788)
 - Completed October 9, 2020 – Parking Lot Drop-Off (04-118521)
- (Construction Start) February 18, 2019 – Orange HS Science Center (Increment #2)
 - Completed April 8, 2020 – Custom Tensile Fabric Shade Structure (04-118351)
 - Completed August 11, 2021 – Orange HS Science Center (04-116859)
- (Construction Start) April 2, 2019 – El Modena HS Science Center
- (Construction Start) June 12, 2019 – Canyon HS Interim Housing & Science Center
 - Completed August 7, 2020 – Interim Modular Kitchen (04-118418)

Division of State Architects (DSA) approval to establish Phase 2 design criteria as follows:

- (Completed) September 10, 2021 – Villa Park HS Phase 2 (04-119694)
 - Submitted on March 3, 2021
- (Submitted) April 23, 2021 – El Modena HS Phase 2 (04-120032)
- (Submitted) May 26, 2021 – Orange HS Phase 2 (04-120151)
- (Submitted) August 17, 2021 – Canyon HS Phase 2 (04-120410)



1.2 Program Highlights/Key Milestones

California Environmental Quality Act (CEQA) Compliance Achieved on Phase 1 (as required by law):

- Villa Park HS Science Center – Notice of Exemption (Board approved on 9/20/18).
- Canyon HS Science Center – Notice of Exemption (Board approved on 7/26/18).
- Orange HS Science Center – Notice of Exemption (Board approved on 3/8/18).
- El Modena HS Science Center – Notice of Exemption (Board approved on 3/8/18).

California Environmental Quality Act (CEQA) Compliance PENDING on Phase 2 (as required by law):

- Canyon HS Phase 2 – [Pending CEQA review](#)
- El Modena HS Phase 2 – [Pending CEQA review](#)
- Orange HS Phase 2 – [Pending CEQA review](#)
- Villa Park HS Phase 2 – [Pending CEQA review](#)

Phase 2 Measure S Bond Project Development Update:

- [On 09/09/21, Board approved low bid award to general contractor New Dimension for the Swing space retrofit of Building 300 for the Orange HS – Phase 2 project in the amount of; \\$99,450.00.](#)
- As of 09/30/2021, the Board approved RFP 210625, for Environmental Audit, Inc. for the Measure S Phase II projects on 08/19/2021. Pending purchase order (PO), once received will start the CEQA process.
- As of 09/30/2021, at Canyon HS – Phase 2 (04-120410), accepted for DSA Plan Review on August 17, 2021. DSA back check review continues.
- As of 09/30/21, at Villa Park HS - Phase 2 (04-119694), accepted for DSA Plan Review on March 3, 2021. DSA back check review continues.
- As of 09/30/21, at El Modena HS - Phase 2 (04-120032), accepted for DSA Plan Review on April 23, 2021. DSA back check review continues.
- [On 09/30/2021, Board approved DSA recommended structural retrofit design to strengthen the roofs at the existing administration building and the two-story classroom buildings 200, 300, 400, and 500 \(Wall Anchorage Upgrade - Structural Retrofitting\), Design Service Request # 2 proposal received from Harley Ellis Devereaux \(HED\), for the El Modena HS \(Phase 2\) project, in the amount of: \\$53,660.](#)
- As of 09/30/21, at Orange HS - Phase 2 (04-120151), submitted for DSA Plan Review on May 26, 2021. DSA back check review continues.

Program Wide Cash Flow Projection / Bond Issuance



- As of 09/30/21, we are preparing to revise the last cash flow assessment in May 2020, which the current projections of the Phase II projects are based on. The first complete Phase I project completed is the Orange HS, Phase I Science Center project.
- Data analysis on the slow spending in the Phase I program and current market conditions due to the COVID-19 pandemic, it appears that selling Bonds before May 2022 needs to be re-analyzed, so a new cash flow projection is being prepared for discussion with CBO.

Project Achievements:

- On 09/09/21, Board approved Change Order # 6 for Angeles at El Modena HS in the amount of; Change Order No. 6: \$107,243.56 – 0 Calendar Days Additional Contract Time.
- On 09/09/21, Board approved Change Order # 15 for Swinerton at Canyon HS in the amount of; Change Order No. 15: \$76,092.86 – 0 Calendar Days Additional Contract Time.
- On 09/09/21, Board approved low bid award to general contractor New Dimension for the Swing space retrofit of Building 300 for the Orange HS – Phase 2 project in the amount of: \$99,450.00.
- On 09/10/2021, the design for application 04-119694, was approved by DSA. The stamped DSA approved plans will be place in Procore for access.
- As of 9/30/2021, the DSA-168 for the final costs at the Villa Park HS Parking Drop-Off Project (04-118521), including the balance of outstanding change orders. Awaiting the final review from DSA.
- On 09/30/21, Board approved Change Order # 06 for Angeles Contractor, Inc. at Villa Park HS IH & Science Center project in the amount of; Change Order No. 06: \$55,428.57 – 0 Calendar Days Additional Contract Time.
- On 09/30/21, Board approved DSA recommended structural retrofit design to strengthen the roofs at the existing administration building and the two-story classroom buildings 200, 300, 400, and 500 (Wall Anchorage Upgrade - Structural Retrofitting), Design Service Request # 2 proposal received from Harley Ellis Devereaux (HED), for the El Modena HS (Phase 2) project, in the amount of: \$53,660.
- As of 09/30/21, processing payment application # 28 (August), for ACI (EMHS) reflecting 79% paid overall completion, reflecting 410 calendar days elapsed.
- As of 09/30/21, processing payment application # 30 (August), for ACI (VPHS) reflecting 80% paid overall completion, reflecting 552 calendar days elapsed.



- As of 09/30/21, processing [payment application # 27](#) (August) for Swinerton (CHS) reflecting [74%](#) paid overall completion, reflecting [827 calendar days](#) elapsed.

1.3 Look Ahead (next 90 days)

Board of Education Agenda

October 21st

1. Recommend Board approval of Change Order # 7 for Angeles at El Modena HS in the amount of; Change Order No. 7: \$184,104.01 – 0 Calendar Days Additional Contract Time; Description: General Contractor costs based on Ten (10) PCO's: Two (2) Unforeseen Conditions, One (1) Owner Requested and Seven (7) Design Related changes. This reflects 2.37 %
2. Recommend Board Approval of the Beltmann Relocation Group in the amount of \$6,238.00, for upcoming ADMIN move, and the amount of \$9,298.00, for upcoming CLASSROOM move, at Canyon HS Science Center, along with a 10% contingency add of \$1,554.00, which bring this to a grand total of: \$17,090.00.
3. Recommend Board approval of Change Order # 16 for Swinerton at Canyon HS in the amount of; Change Order No. 16: \$192,252.99 – 0 Calendar Days Additional Contract Time; Description: General Contractor costs based on Thirteen (13) PCO's: Six (6) Unforeseen Conditions, Three (3) Owner Requested and Four (4) Design Related changes. This reflects 6.32 %

Program Wide

- Orange HS Science Center – completing items on the Warranty list needing attention.
- Orange HS Science Center – Move Manager to continue with the planning and furniture needs of the swing space required for the new administration building. Assist with any removal of surplus items and/or hazardous material items from the classrooms and campus, required for the new administration building.
- Orange HS Phase II – Lionakis (Architect of Record) responding to any DSA comments during plan review.
- El Modena HS Science Center – Angeles Contractor (ACI) is correcting all deviation issues, prioritizing the Stop issues, correction of continuity and cap plates, reducing the number of NNC issues, completing, exterior fiber board, duct penetrations in roof, interior utility line runs, interior framing, stairs, HVAC ductwork, taping and drywall, drop ceiling, focusing on the building being weather-tight.
- El Modena HS Science Center – The milestone substantial completion (SC) date slipped to January 16, 2022, and the contract completion date of February 16, 2022, based on ACI



schedule. We have spoken to ACI about the manpower adjustment needed to pull the schedule back to a December 2021 SC timeframe

- El Modena HS Phase II – HED (Architect of Record) responding to any DSA comments during plan review.
- El Modena HS Phase II – Move Manager provided additional moving boxes and supplies to the teachers relocating and continue the preparation for the relocation. Work with the furniture vendor on the timing of the occupancy of the building and plan logistics of the new furniture and assist in the logistics of storing the furniture product in storage. Assist the project manager in the delivery/installation of the owner-furnished contractor to install (OFCI) equipment. Complete the removal of the surplus and hazardous material items from the classrooms that are relocation.
- Villa Park HS Interim Housing & Science Center – ACI completing, interior utility line runs, interior framing, exterior facia, HVAC ductwork runs, drop ceiling, insulation, exterior masonry wall, window and frame installs, interior drywall with mud and taping, focusing on the building being weather-tight as well as completing the punch list work for the parking drop off entrance.
- Villa Park HS Interim Housing & Science Center – Completing final punch list items and asphalt issues to complete the Parking and Drop Off zone (04-118521) work. ACI to complete Path-of-Travel (POT) construction, so that all PL items can be completed and DSA final documents updated.
- Villa Park HS Science Center – CM review of the general contractor's August schedule update, reflecting an un-approved substantial completion date of December 16, 2021, which stayed consistent from last month's schedule.
- Villa Park HS Phase II – LPA (Architect of Record) responding to any DSA comments during plan review.
- Villa Park HS Phase II – Move Manager continues preparation for relocations (teacher meetings, rooms/items relocating review, moving supplies orders/delivery, hazmat, and surplus items removal), new furniture delivery, and assistance in OFCI delivery.
- Canyon HS Science Center – Swinerton completing, internal utility and wire runs, 2nd floor run penetrations, sidewalk pours, site excavation, roofing deck and penetrations, grading, parking lot paving, focusing on the building being weather-tight, as well as fencing trenching, completing the MPR exterior finishes on store front, sidewalks and landscape for turn-over to the District.
- Canyon HS Phase II – Cannon Design (Architect of Record) responding to any DSA comments during plan review.



- Canyon HS Phase II – Prepare to review the Phase II 100% construction cost estimates from the Construction Manager for adherence to budget. Revise the design to conform to budget, if necessary.
- Canyon HS Phase II – Move Manager continues with site visit and review of classrooms relocating into the new Science Building for preparation and planning. Continue the Furniture and Equipment selection and obtain proposals for the Phase 1 project.



2.0 PROJECT STATUS REPORT



Canyon High School
New STEM Building

CANYON HIGH SCHOOL
New STEM Building



EL MODENA SCIENCE CENTER

Overall View

HED



Orange High School Science Center



ST VILLA PARK HIGH SCHOOL

LPA



CANYON HIGH SCHOOL

CANYON HS SCIENCE CENTER

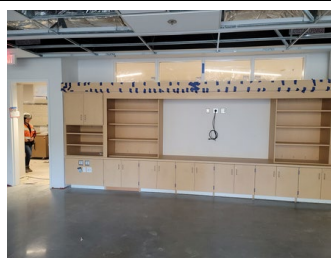
- ✓ 12 Laboratory Rooms
- ✓ 12 General Classrooms
- ✓ Student Services
- ✓ New Food Services

- ✓ New Multi-Purpose Room Entry
- ✓ Parking Lot Improvements
- ✓ Infrastructure Upgrade and Improvements
- ✓ Landscape Improvements

Project Update (Construction):

- As of 09/30/21, Swinerton completing, internal utility and wire runs, 2nd floor run penetrations, sidewalk pours, site excavation, roofing deck and penetrations, grading, parking lot paving, focusing on the building being weather-tight, as well as fencing trenching, completing the MPR exterior finishes on store front, sidewalks and landscape for turn-over to the District.
- On 09/09/21, Board approved Change Order # 15 for Swinerton at Canyon HS in the amount of; Change Order No. 15: \$76,092.86 – 0 Calendar Days Additional Contract Time.
- As of 09/30/21, preparing for Partial Acceptance of Landscape Area 1 (adjacent to the new Admin wing), and scheduling a punch list walk.
- As of 09/30/21, Move Manager met with teachers in their classrooms to review items and discuss the occupancy plan, new furniture, and relocation to the new science building. Initiate the removal of the Hazmat and surplus items from classrooms that are relocating. Met the Office manager to discuss the administrative staff relocation plan and the review of the occupancy list.
- As of 09/30/21, processing payment application # 27 (August) reflecting 74% paid overall completion, reflecting 827 calendar days elapsed.

See Construction Photo's below:



Left to right: interior hallway cement board finishes, science classroom cabinetry in place, exterior fascia finish, elevator install, curtain wall entrance framing in place, chemistry class room cabinets.



EL MODENA HS SCIENCE CENTER

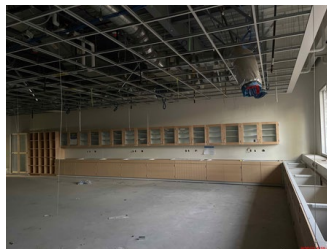
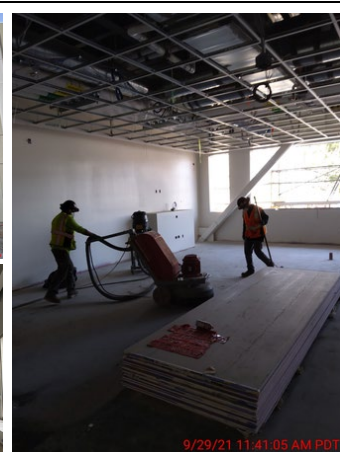
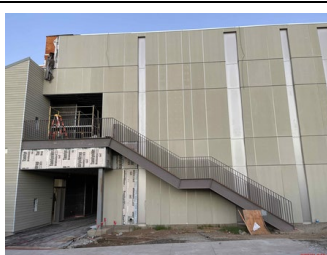
- ✓ 12 Laboratory Rooms
- ✓ 1 General Classrooms
- ✓ 2 Medically Fragile Classrooms

- ✓ Relocation of Campus MDF
- ✓ Technology & Utility Upgrade
- ✓ Landscape Improvements

Project Update (Construction):

- As of 09/30/21, Angeles is correcting all deviation issues, prioritizing the Stop issues, correction of continuity and cap plates, reducing the number of NNC issues, completing, exterior fiber board, duct penetrations in roof, interior utility line runs, interior framing, stairs, HVAC ductwork, taping and drywall, drop ceiling, focusing on the building being weather-tight.
- On 09/09/21, Board approved Change Order # 6 for Angeles at El Modena HS in the amount of; Change Order No. 6: \$107,243.56 – 0 Calendar Days Additional Contract Time.
- On 09/30/21, The ACI submitted August Recovery Schedule was rejected, however, the milestone substantial completion date slipped to January 16, 2022, and the contract completion date of February 16, 2022. We have spoken to ACI about the manpower adjustment needed to pull the schedule back to a December SC timeframe.
- On 09/27/2021, Thomas Hughes (Cumming PM) started today to cross-train with Ray Hillis on taking over the Construction Management responsibilities until Ray's last day on 10/5/2021.
- As of 09/30/21, Moving boxes and supplies delivered to teacher classrooms that will be relocating to the new building. Move Manager meeting new teachers occupying classrooms relocating and discuss the occupancy plan and next steps. Work with the furniture vendor on the partial invoicing of the product due to the delay in the construction schedule. Continue to removal hazmat and surplus items from classrooms relocating.
- As of 09/30/21, processing payment application # 28 (August) reflecting **79%** paid overall completion, reflecting **410 calendar days** elapsed.

See Construction Photo's below:



Left to right: Exterior fascia board in place (SW exposure), , exterior stairway (West), interior ceiling grid and flooring,, corridor ceiling grid and ready for plaster on walls, restroom wall time in place, science classroom ceiling grid and cabinets.



ORANGE HS SCIENCE CENTER

- ✓ 12 Laboratory Rooms
- ✓ 1 General Classrooms

- ✓ New Panther Pavilion Plaza
- ✓ 2 Medically Fragile Classrooms

Project Update Increment # 2 – Science Center (**Completion**):

- As of 09/30/21, Pinner completing all warranty work on the interior and exterior of the STEM building, establish the warranty exceptions list with cost.
- As of 09/30/21, there has been no follow up on a Release of Stop Notice letter received from Pinner, still withholding retention funds required in the amount of \$251,952.98.
- As of 09/30/21, there was not payment activity this month.

[See Completion Photo's below:](#)



Orange HS – Science Center STEM Building
(Dusk with lights)



"ONCE A PANTHER, ALWAYS A PANTHER"



VILLA PARK HIGH SCHOOL

SCHOOL OF EXCELLENCE

VILLA PARK HS SCIENCE CENTER

- ✓ 12 Laboratory Rooms
- ✓ 2 General Classrooms
- ✓ 2 Medically Fragile Classrooms

- ✓ Demolish existing building 300
- ✓ Install 10 New Portable Buildings

Project Update ([Construction](#)):

- As of 09/30/21, Angeles completing, interior utility line runs, interior framing, exterior facia, HVAC ductwork runs, drop ceiling, insulation, exterior masonry wall, window and frame installs, interior drywall with mud and taping, focusing on the building being weather-tight as well as completing the punch list work for the parking drop off entrance.
- As of 09/30/21, CM review of the general contractor's August schedule update, reflecting an un-approved substantial completion date of December 16, 2021, which stayed consistent form last month's schedule.
- On 09/30/21, Board approved Change Order # 06 for Angeles Contractor, Inc. at Villa Park HS IH & Science Center project in the amount of; Change Order No. 06: \$55,428.57 – 0 Calendar Days Additional Contract Time.
- As of 09/30/21, DSA is reviewing the final costs, including the balance of outstanding change orders, for close out on the Parking Drop-Off project (04-118521).
- As of 09/30/21, Moving boxes and supplies delivered to teacher classrooms that will be relocating to the new building. Move Manager working with the furniture vendor on the partial invoicing of the product due to the delay in the construction schedule. Meet with new teachers occupying classrooms relocating and discuss the occupancy plan and next steps. Continue to remove surplus items from classrooms relocating.
- As of 09/30/21, processing payment application # 30 (August) reflecting **80%** paid overall completion, reflecting **552 calendar days** elapsed.

See Construction Photo's below:



Left to right: Exterior facia and windows in place, chemistry classroom cabinetry and countertops, interior stairwell finish work, 2nd floor hallway with rails, door frames and ceiling grids in place.



3.0 FINANCIAL REPORT

Measure S Bond Program

Financial Report for September 2021

3.1 Project Cost Estimate

QSS Data thru 9/30/2021

	Budget	Contracted to Date	Expended to Date	Quarterly Expense Jul '21 - Sep '21	% Expended
PROGRAM					
Phase 1 - HS Science Center	\$204,646,115	\$161,888,326	\$135,691,972	\$15,674,453	66.31%
Phase 2	\$86,957,789	\$8,516,650	\$5,482,808	\$637,400	6.31%
TOTAL	\$291,603,903	\$170,404,975	\$141,174,780	\$16,311,853	48.41%
Canyon High School					
Phase 1 - HS Science Center	\$68,613,051	\$51,524,195	\$39,245,150	\$7,350,659	57.20%
Phase 2	\$4,653,230	\$1,144,036	\$669,970	\$136,361	14.40%
TOTAL	\$73,266,281	\$52,668,232	\$39,915,120	\$7,487,021	54.48%
El Modena High School					
Phase 1 - HS Science Center	\$40,031,702	\$34,595,966	\$27,610,849	\$3,393,387	68.97%
Phase 2	\$32,741,295	\$2,624,867	\$1,787,498	\$74,749	5.46%
TOTAL	\$72,772,997	\$37,220,833	\$29,398,348	\$3,468,136	40.40%
Orange High School					
Phase 1 - HS Science Center	\$51,648,075	\$42,356,235	\$42,071,055	\$198,202	81.46%
Phase 2	\$21,217,888	\$2,221,861	\$1,365,861	\$136,757	6.44%
TOTAL	\$72,865,963	\$44,578,096	\$43,436,916	\$334,958	59.61%
Villa Park High School					
Phase 1 - HS Science Center	\$44,353,287	\$33,411,929	\$26,764,918	\$4,732,205	60.34%
Phase 2	\$28,345,375	\$2,525,886	\$1,659,479	\$289,533	5.85%
TOTAL	\$72,698,662	\$35,937,815	\$28,424,397	\$5,021,739	39.10%



Measure S Bond Program

Financial Report for September 2021

Budget vs Actuals - By School and Budget Category with Vendor Detail

QSS Data thru 9/30/2021

	Budget	Contracted to Date	Expended to Date	Quarterly Expense Jul '21 - Sep '21	% Expended
Canyon High School					
390-9520 Canyon HS Science Center (DSA 04-117300)					
1. Design Cost					
1.01 Architect					
UNCOMMITTED	\$13,600	\$0	\$0	\$0	
GKKWORKS CANNON DESIGN	\$3,122,050	\$3,122,050	\$3,023,647	\$46,436	96.85%
LIONAKIS	\$14,058	\$14,058	\$14,058	\$0	100.00%
	\$3,149,708	\$3,136,108	\$3,037,705	\$46,436	96.44%
2. Construction Cost					
2.01 Construction					
UNCOMMITTED	\$3	\$0	\$0	\$0	
SWINERTON BUILDERS	\$39,506,003	\$39,506,003	\$29,294,547	\$6,820,989	74.15%
	\$39,506,006	\$39,506,003	\$29,294,547	\$6,820,989	74.15%
2.02 OFCI and Other Construction					
UNCOMMITTED	\$352,128	\$0	\$0	\$0	
ACCO ENGINEERED SYSTEMS INC	\$236,785	\$236,785	\$236,785	\$0	100.00%
AMERICAN REPROGRAPHICS CO LLC	\$1,026	\$1,026	\$0	\$0	0.00%
CITY OF ANAHEIM - ELECTRICAL ENGINEERING DIV	\$91,340	\$91,340	\$91,340	\$0	100.00%
DEVELOPMENT GROUP INC	\$90,440	\$90,440	\$51,375	\$51,375	56.80%
INTER-PACIFIC INC	\$12,869	\$12,869	\$12,869	\$12,869	100.00%
VWR INTERNATIONAL LLC	\$16,691	\$16,691	\$0	\$0	0.00%
WW GRAINGER INC	\$1,039	\$1,039	\$1,039	\$0	100.00%
	\$802,317	\$450,189	\$393,407	\$64,243	49.03%
3. Program and Construction Management					
3.01 Program Management Fees					
UNCOMMITTED	\$1,074,954	\$0	\$0	\$0	
CUMMING CONSTRUCTION MGMT INC	\$1,126,003	\$2,179,717	\$1,092,863	\$37,340	97.06%
	\$2,200,957	\$2,179,717	\$1,092,863	\$37,340	49.65%
3.02 Construction Management Fees					
UNCOMMITTED	\$22,668	\$0	\$0	\$0	
CORDOBA CORPORATION	\$87,508	\$87,508	\$87,479	\$0	99.97%
GAFCON INC	\$2,770,943	\$2,770,943	\$2,391,211	\$266,252	86.30%
	\$2,881,119	\$2,858,451	\$2,478,690	\$266,252	86.03%
4. Construction Support Costs					
4.01 Rental					
UNCOMMITTED	\$1	\$0	\$0	\$0	
	\$1	\$0	\$0	\$0	0.00%



Measure S Bond Program

Financial Report for September 2021

Budget vs Actuals - By School and Budget Category with Vendor Detail

QSS Data thru 9/30/2021

	Budget	Contracted to Date	Expended to Date	Quarterly Expense Jul '21 - Sep '21	% Expended
4.02 Title, Environmental, Stormwater Management					
UNCOMMITTED	\$56,555	\$0	\$0	\$0	
CHICAGO TITLE COMPANY	\$750	\$750	\$750	\$0	100.00%
CITY OF ANAHEIM	\$2,524	\$2,524	\$2,524	\$0	100.00%
CITY OF ANAHEIM - WATER	\$3,082	\$3,082	\$3,082	\$0	100.00%
COUNTY OF ORANGE - ENVIRONMENTAL HEALTH	\$1,615	\$1,615	\$1,615	\$0	100.00%
ENVIRONMENTAL AUDIT INC	\$50,800	\$50,800	\$21,375	\$0	42.08%
OUSD COST OF INTEREST DISTRIBUTION	\$1	\$1	\$1	\$0	100.00%
	\$115,327	\$58,771	\$29,346	\$0	25.45%
4.03 Commissioning					
UNCOMMITTED	\$23,241	\$0	\$0	\$0	
P2S ENGINEERING INC	\$49,202	\$49,202	\$41,330	\$2,935	84.00%
	\$72,443	\$49,202	\$41,330	\$2,935	57.05%
4.04 Builders Risk Insurance					
UNCOMMITTED	\$0	\$0	\$0	\$0	
	\$0	\$0	\$0	\$0	
4.05 DSA Review Fees					
UNCOMMITTED	\$76,626	\$0	\$0	\$0	
DIVISION OF STATE ARCHITECT	\$504,370	\$504,370	\$504,370	\$0	100.00%
	\$580,996	\$504,370	\$504,370	\$0	86.81%
4.06 Postage, Printing & Advertising					
UNCOMMITTED	\$59,535	\$0	\$0	\$0	
AMERICAN REPROGRAPHICS CO LLC	\$13,857	\$13,857	\$10,950	\$0	79.02%
SOUTHERN CALIFORNIA NEWS GROUP	\$2,605	\$2,605	\$2,605	\$0	100.00%
	\$75,997	\$16,462	\$13,555	\$0	17.84%
4.07 DSA Inspection (IOR)					
UNCOMMITTED	\$139,851	\$0	\$0	\$0	
KNOWLAND CONSTRUCTION SERVICES	\$454,016	\$454,016	\$315,480	\$44,352	69.49%
	\$593,867	\$454,016	\$315,480	\$44,352	53.12%
4.08 DSA Construction Phase Testing (LOR)					
UNCOMMITTED	\$90,876	\$0	\$0	\$0	
AMERICAN ENGINEERING LABORATORIES INC	\$556,995	\$556,995	\$456,839	\$15,355	82.02%
	\$647,871	\$556,995	\$456,839	\$15,355	70.51%
4.09 Relocation					
UNCOMMITTED	\$23,140	\$0	\$0	\$0	
ULINE INC	\$1,860	\$1,860	\$0	\$0	0.00%
	\$25,000	\$1,860	\$0	\$0	0.00%
4.10 Labor Compliance					
UNCOMMITTED	\$47,498	\$0	\$0	\$0	
	\$47,498	\$0	\$0	\$0	0.00%
4.11 Preliminary Testing (Hazmat, Topo, Geo, etc)					



Measure S Bond Program

Financial Report for September 2021

Budget vs Actuals - By School and Budget Category with Vendor Detail

QSS Data thru 9/30/2021

	Budget	Contracted to Date	Expended to Date	Quarterly Expense Jul '21 - Sep '21	% Expended
UNCOMMITTED	\$229,637	\$0	\$0	\$0	
C BELOW SUBSURFACE IMAGING (Subsurface Investigation)	\$8,445	\$8,445	\$8,445	\$0	100.00%
CALIFORNIA GEOLOGICAL SURVEY (Geology and Seismology Review)	\$3,600	\$3,600	\$3,600	\$0	100.00%
ENVIRONMENTAL NETWORK CORPORATION	\$20,210	\$20,210	\$20,193	\$0	99.91%
HARRINGTON GEOTECHNICAL ENGINEERING INC (Geotechnical Soils Investigation)	\$13,500	\$13,500	\$13,500	\$0	100.00%
PROVENCER, GEORGE (dba PROVO ENGINEERING)	\$720	\$720	\$720	\$0	100.00%
RMA GROUP (dba SITESCAN)	\$26,103	\$26,103	\$26,103	\$0	100.00%
XICOTENCATL ENRIQUE SALAZAR (Topographical Survey)	\$20,100	\$20,100	\$20,100	\$0	100.00%
	\$322,315	\$92,678	\$92,660	\$0	28.75%
4.12 Utility Connection Fees (Local Permits)					
UNCOMMITTED	\$173,033	\$0	\$0	\$0	
AT&T	\$5,302	\$5,302	\$5,302	\$0	100.00%
CITY OF ANAHEIM - ELECTRICAL ENGINEERING DIV	\$2,756	\$2,756	\$2,756	\$0	100.00%
CROWN CASTLE INTERNATIONAL	\$6,455	\$6,455	\$6,455	\$0	100.00%
SOUTHERN CALIFORNIA GAS CO	\$2,445	\$2,445	\$2,445	\$0	100.00%
	\$189,991	\$16,958	\$16,958	\$0	8.93%
4.13 FF&E (Laboratory Tables and Chairs, other)					
UNCOMMITTED	\$858,132	\$0	\$0	\$0	
ARROW RESTAURANT EQUIPMENT	\$11,559	\$11,559	\$11,559	\$11,559	100.00%
CAROLINA BIOLOGICAL SUPPLY	\$18,896	\$18,896	\$1,581	\$1,581	8.37%
VWR INTERNATIONAL LLC	\$9,486	\$9,486	\$9,486	\$9,486	100.00%
	\$898,073	\$39,941	\$22,627	\$22,627	2.52%
4.14 Legal Counsel					
UNCOMMITTED	\$94,996	\$0	\$0	\$0	
	\$94,996	\$0	\$0	\$0	0.00%
5. Contingency					
5.01 Construction Contingency					
UNCOMMITTED	\$1,680,437	\$0	\$0	\$0	
	\$1,680,437	\$0	\$0	\$0	0.00%
5.02 Project Contingency					
UNCOMMITTED	\$12,422,149	\$0	\$0	\$0	
	\$12,422,149	\$0	\$0	\$0	0.00%
Total 390-9520 Canyon HS Science Center (DSA 04-117300)	\$66,307,067	\$49,921,722	\$37,790,375	\$7,320,528	56.99%
390-9520 Canyon HS Unallocated Funds F21					
4. Construction Support Costs					
4.15 Miscellaneous Fees					
UNCOMMITTED	\$0	\$0	\$0	\$0	

**Measure S Bond Program**

Financial Report for September 2021

Budget vs Actuals - By School and Budget Category with Vendor Detail

QSS Data thru 9/30/2021

	Budget	Contracted to Date	Expended to Date	Quarterly Expense Jul '21 - Sep '21	% Expended
OUSD COST OF INTEREST DISTRIBUTION	\$36,936	\$36,936	\$36,936	\$0	100.00%
	\$36,936	\$36,936	\$36,936	\$0	100.00%
5. Program Reserve					
5.03 Interest Earned - Reserve					
UNCOMMITTED	\$1,229,345	\$0	\$0	\$0	
	\$1,229,345	\$0	\$0	\$0	0.00%
Total 390-9520 Canyon HS Unallocated Funds F21	\$1,266,281	\$36,936	\$36,936	\$0	2.92%
390-0000 Canyon HS IP Surveillance Camera and Systems					
4. Construction Support Costs					
4.13 FF&E (Laboratory Tables and Chairs, other)					
UNCOMMITTED	\$0	\$0	\$0	\$0	
CDW GOVERNMENT INC (Parts for IP Camera Systems)	\$29,337	\$29,337	\$29,337	\$0	100.00%
DIGITAL NETWORKS GROUP INC (F/I IP Camera Software)	\$7,093	\$7,093	\$7,093	\$0	100.00%
INTER-PACIFIC INC	\$18,163	\$18,163	\$18,163	\$0	100.00%
	\$54,593	\$54,593	\$54,593	\$0	100.00%
Total 390-0000 Canyon HS IP Surveillance Camera and Systems	\$54,593	\$54,593	\$54,593	\$0	100.00%
390-9520 Canyon HS Interim Kitchen (DSA 04-118418)					
1. Design Cost					
1.01 Architect					
UNCOMMITTED	\$0	\$0	\$0	\$0	
GKKWORKS CANNON DESIGN	\$119,620	\$119,620	\$11,475	\$0	9.59%
	\$119,620	\$119,620	\$11,475	\$0	9.59%
2. Construction Cost					
2.01 Construction					
UNCOMMITTED	\$0	\$0	\$0	\$0	
SWINERTON BUILDERS	\$1,053,557	\$1,053,557	\$1,048,571	\$0	99.53%
	\$1,053,557	\$1,053,557	\$1,048,571	\$0	99.53%
2.02 OFCI and Other Construction					
UNCOMMITTED	\$10	\$0	\$0	\$0	
E.R.E.S. ENTERPRISES INC DBA ECONOMY RESTAURANT EQUIP	\$49,721	\$49,721	\$49,721	\$0	100.00%
THE DICKLER CORPORATION DBA CHEFS TOYS	\$109,449	\$109,449	\$109,449	\$0	100.00%
	\$159,180	\$159,170	\$159,170	\$0	99.99%
4. Construction Support Costs					
4.01 Rental					



Measure S Bond Program

Financial Report for September 2021

Budget vs Actuals - By School and Budget Category with Vendor Detail

QSS Data thru 9/30/2021

	Budget	Contracted to Date	Expended to Date	Quarterly Expense Jul '21 - Sep '21	% Expended
UNCOMMITTED	\$0	\$0	\$0	\$0	
ELITE MODULAR LEASING & SALES INC	\$161,864	\$161,864	\$144,929	\$30,131	89.54%
	\$161,864	\$161,864	\$144,929	\$30,131	89.54%
4.05 DSA Review Fees					
UNCOMMITTED	\$0	\$0	\$0	\$0	
DIVISION OF STATE ARCHITECT	\$15,812	\$15,812	\$15,812	\$0	100.00%
	\$15,812	\$15,812	\$15,812	\$0	100.00%
4.07 DSA Inspection (IOR)					
UNCOMMITTED	\$0	\$0	\$0	\$0	
KNOWLAND CONSTRUCTION SERVICES	\$71,104	\$71,104	\$61,688	\$0	86.76%
	\$71,104	\$71,104	\$61,688	\$0	86.76%
4.08 DSA Construction Phase Testing (LOR)					
UNCOMMITTED	\$0	\$0	\$0	\$0	
AMERICAN ENGINEERING LABORATORIES INC	\$17,100	\$17,100	\$9,219	\$0	53.91%
	\$17,100	\$17,100	\$9,219	\$0	53.91%
4.11 Preliminary Testing (Hazmat, Topo, Geo, etc)					
UNCOMMITTED	\$0	\$0	\$0	\$0	
ENVIRONMENTAL NETWORK CORPORATION	\$4,245	\$4,245	\$3,910	\$0	92.10%
	\$4,245	\$4,245	\$3,910	\$0	92.10%
Total 390-9520 Canyon HS Interim Kitchen (DSA 04-118418)	\$1,602,483	\$1,602,473	\$1,454,775	\$30,131	90.78%
390-9520 Canyon HS Phase II Planning and Design					
1. Design Cost					
1.01 Architect					
UNCOMMITTED	\$0	\$0	\$0	\$0	
GKKWORKS CANNON DESIGN	\$663,500	\$663,500	\$463,725	\$56,925	69.89%
	\$663,500	\$663,500	\$463,725	\$56,925	69.89%
1.02 AE Design Contingency					
UNCOMMITTED	\$44,000	\$0	\$0	\$0	
GKKWORKS CANNON DESIGN	\$0	\$44,000	\$0	\$0	
	\$44,000	\$44,000	\$0	\$0	0.00%
3. Program and Construction Management					
3.01 Program Management Fees					
UNCOMMITTED	\$182,976	\$0	\$0	\$0	
CUMMING CONSTRUCTION MGMT INC	\$21,053	\$21,053	\$21,053	\$221	100.00%
	\$204,029	\$21,053	\$21,053	\$221	10.32%
3.02 Construction Management Fees					
UNCOMMITTED	\$104,630	\$0	\$0	\$0	
CORDOBA CORPORATION	\$234,970	\$234,970	\$22,003	\$19,775	9.36%



Measure S Bond Program

Financial Report for September 2021

Budget vs Actuals - By School and Budget Category with Vendor Detail

QSS Data thru 9/30/2021

	Budget	Contracted to Date	Expended to Date	Quarterly Expense Jul '21 - Sep '21	% Expended
	\$339,600	\$234,970	\$22,003	\$19,775	6.48%
4. Construction Support Costs					
4.03 Commissioning					
UNCOMMITTED	\$0	\$0	\$0	\$0	
P2S ENGINEERING INC	\$4,329	\$4,329	\$1,800	\$1,800	41.58%
	\$4,329	\$4,329	\$1,800	\$1,800	41.58%
4.05 DSA Review Fees					
UNCOMMITTED	\$0	\$0	\$0	\$0	
DIVISION OF STATE ARCHITECT	\$57,640	\$57,640	\$57,640	\$57,640	100.00%
	\$57,640	\$57,640	\$57,640	\$57,640	100.00%
4.06 Postage, Printing & Advertising					
UNCOMMITTED	\$0	\$0	\$0	\$0	
AMERICAN REPROGRAPHICS CO LLC	\$7,500	\$7,500	\$0	\$0	0.00%
	\$7,500	\$7,500	\$0	\$0	0.00%
4.11 Preliminary Testing (Hazmat, Topo, Geo, etc)					
UNCOMMITTED	\$254,336	\$0	\$0	\$0	
ENVIRONMENTAL NETWORK CORPORATION	\$19,515	\$19,515	\$12,220	\$0	62.62%
	\$273,851	\$19,515	\$12,220	\$0	4.46%
Total 390-9520 Canyon HS Phase II Planning and Design	\$1,594,449	\$1,052,507	\$578,441	\$136,361	36.28%
390-TBD Canyon HS Science Center Unallocated Funds F22					
5. Unallocated Bond Funds					
5.04 Unallocated Bond Funds					
UNCOMMITTED	\$703,502	\$0	\$0	\$0	
	\$703,502	\$0	\$0	\$0	0.00%
Total 390-TBD Canyon HS Science Center Unallocated Funds F22	\$703,502	\$0	\$0	\$0	0.00%
390-TBD Canyon HS Unallocated Funds F22					
5. Unallocated Bond Funds					
5.04 Unallocated Bond Funds					
UNCOMMITTED	\$1,737,907	\$0	\$0	\$0	
	\$1,737,907	\$0	\$0	\$0	0.00%
Total 390-TBD Canyon HS Unallocated Funds F22	\$1,737,907	\$0	\$0	\$0	0.00%
Canyon High School	\$73,266,281	\$52,668,232	\$39,915,120	\$7,487,021	54.48%
El Modena High School					



Measure S Bond Program

Financial Report for September 2021

Budget vs Actuals - By School and Budget Category with Vendor Detail

QSS Data thru 9/30/2021

	Budget	Contracted to Date	Expended to Date	Quarterly Expense Jul '21 - Sep '21	% Expended
391-0000 EI Modena HS IP Surveillance Camera and Systems					
4. Construction Support Costs					
4.13 FF&E (Laboratory Tables and Chairs, other)					
UNCOMMITTED	\$0	\$0	\$0	\$0	
CDW GOVERNMENT INC (Parts for IP Camera Systems)	\$39,388	\$39,388	\$39,388	\$0	100.00%
DIGITAL NETWORKS GROUP INC (F/I IP Camera Software)	\$11,719	\$11,719	\$11,719	\$0	100.00%
INTER-PACIFIC INC	\$30,073	\$30,073	\$30,073	\$0	100.00%
	\$81,179	\$81,179	\$81,179	\$0	100.00%
Total 391-0000 EI Modena HS IP Surveillance Camera and Systems	\$81,179	\$81,179	\$81,179	\$0	100.00%
391-9520 EI Modena HS Science Center (DSA 04-117098)					
1. Design Cost					
1.01 Architect					
UNCOMMITTED	\$548,666	\$0	\$0	\$0	
HARLEY ELLIS DEVEREAUX	\$1,954,014	\$1,954,014	\$1,926,048	\$0	98.57%
LIONAKIS	\$14,059	\$14,059	\$14,059	\$0	100.00%
	\$2,516,739	\$1,968,073	\$1,940,107	\$0	77.09%
2. Construction Cost					
2.01 Construction					
UNCOMMITTED	\$2	\$0	\$0	\$0	
ANGELES CONTRACTOR, INC	\$26,138,675	\$26,138,675	\$19,883,727	\$2,572,072	76.07%
	\$26,138,677	\$26,138,675	\$19,883,727	\$2,572,072	76.07%
2.02 OFCI and Other Construction					
UNCOMMITTED	\$12,762	\$0	\$0	\$0	
ACCO ENGINEERED SYSTEMS INC	\$355,544	\$355,544	\$335,681	\$0	94.41%
AMERICAN REPROGRAPHICS CO LLC	\$1,026	\$1,026	\$0	\$0	0.00%
ARROW RESTAURANT EQUIPMENT	\$14,232	\$14,232	\$14,213	\$0	99.87%
CAROLINA BIOLOGICAL SUPPLY	\$24,213	\$24,213	\$0	\$0	0.00%
DEVELOPMENT GROUP INC	\$52,939	\$52,939	\$52,939	\$584	100.00%
FAIR PLAY SCOREBOARDS	\$17,694	\$17,694	\$17,694	\$0	100.00%
FISHER SCIENCE EDUCATION	\$26,188	\$26,188	\$21,027	\$0	80.29%
FLINN SCIENTIFIC INC	\$12,364	\$12,364	\$12,364	\$12,364	100.00%
PROFESSIONAL TURF SPECIALTIES	\$23,460	\$23,460	\$23,460	\$0	100.00%
WW GRAINGER INC	\$6,039	\$6,039	\$4,081	\$1,895	67.58%
	\$546,461	\$533,699	\$481,460	\$14,843	88.11%
3. Program and Construction Management					
3.01 Program Management Fees					
UNCOMMITTED	\$129,796	\$0	\$0	\$0	



Measure S Bond Program

Financial Report for September 2021

Budget vs Actuals - By School and Budget Category with Vendor Detail

QSS Data thru 9/30/2021

	Budget	Contracted to Date	Expended to Date	Quarterly Expense Jul '21 - Sep '21	% Expended
CUMMING CONSTRUCTION MGMT INC	\$874,030	\$969,465	\$849,663	\$75,048	97.21%
	\$1,003,826	\$969,465	\$849,663	\$75,048	84.64%
3.02 Construction Management Fees					
UNCOMMITTED	\$3,200	\$0	\$0	\$0	
ARCADIS U.S. INC	\$2,348,909	\$2,348,909	\$2,223,782	\$206,783	94.67%
CORDOBA CORPORATION	\$90,336	\$90,336	\$90,336	\$0	100.00%
	\$2,442,445	\$2,439,245	\$2,314,118	\$206,783	94.75%
4. Construction Support Costs					
4.01 Rental					
UNCOMMITTED	\$0	\$0	\$0	\$0	
	\$0	\$0	\$0	\$0	
4.02 Title, Environmental, Stormwater Management					
UNCOMMITTED	\$25,259	\$0	\$0	\$0	
CHICAGO TITLE COMPANY	\$1,500	\$1,500	\$1,500	\$0	100.00%
CITY OF ORANGE (PUBLIC WORKS)	\$71	\$71	\$71	\$0	100.00%
CITY OF ORANGE (WATER DIVISION)	\$16,048	\$16,048	\$10,942	\$0	68.18%
ENVIRONMENTAL AUDIT INC	\$10,950	\$10,950	\$8,548	\$0	78.06%
OUSD COST OF INTEREST DISTRIBUTION	\$1	\$1	\$1	\$0	100.00%
	\$53,829	\$28,570	\$21,061	\$0	39.13%
4.03 Commissioning					
UNCOMMITTED	\$6,112	\$0	\$0	\$0	
P2S ENGINEERING INC	\$30,558	\$30,558	\$27,601	\$0	90.32%
	\$36,670	\$30,558	\$27,601	\$0	75.27%
4.04 Builders Risk Insurance					
UNCOMMITTED	\$0	\$0	\$0	\$0	
	\$0	\$0	\$0	\$0	
4.05 DSA Review Fees					
UNCOMMITTED	\$0	\$0	\$0	\$0	
DIVISION OF STATE ARCHITECT	\$306,338	\$306,338	\$306,338	\$0	100.00%
	\$306,338	\$306,338	\$306,338	\$0	100.00%
4.06 Postage, Printing & Advertising					
UNCOMMITTED	\$9,947	\$0	\$0	\$0	
AMERICAN REPROGRAPHICS CO LLC	\$20,110	\$20,110	\$19,155	\$0	95.25%
SOUTHERN CALIFORNIA NEWS GROUP	\$2,024	\$2,024	\$2,024	\$0	100.00%
	\$32,081	\$22,134	\$21,179	\$0	66.02%
4.07 DSA Inspection (IOR)					
UNCOMMITTED	\$164,770	\$0	\$0	\$0	
BPI INSPECTION SERVICE	\$556,819	\$556,819	\$549,924	\$211,970	98.76%
	\$721,589	\$556,819	\$549,924	\$211,970	76.21%
4.08 DSA Construction Phase Testing (LOR)					



Measure S Bond Program
Financial Report for September 2021
Budget vs Actuals - By School and Budget Category with Vendor Detail

QSS Data thru 9/30/2021

	Budget	Contracted to Date	Expended to Date	Quarterly Expense Jul '21 - Sep '21	% Expended
UNCOMMITTED	\$0	\$0	\$0	\$0	
KOURY ENGINEERING & TESTING INC (Geotechnical Engineering)	\$777,886	\$777,886	\$724,177	\$27,230	93.10%
	\$777,886	\$777,886	\$724,177	\$27,230	93.10%
4.09 Relocation					
UNCOMMITTED	\$15,740	\$0	\$0	\$0	
Beltmann Group, Inc.	\$7,080	\$7,080	\$850	\$0	12.01%
ULINE INC	\$2,180	\$2,180	\$701	\$0	32.17%
	\$25,000	\$9,260	\$1,551	\$0	6.21%
4.10 Labor Compliance					
UNCOMMITTED	\$0	\$0	\$0	\$0	
	\$0	\$0	\$0	\$0	
4.11 Preliminary Testing (Hazmat, Topo, Geo, etc)					
UNCOMMITTED	\$13,619	\$0	\$0	\$0	
ALLEGIAN FIRE PROTECTION INC	\$525	\$525	\$525	\$0	100.00%
CALIFORNIA GEOLOGICAL SURVEY (Geology and Seismology Review)	\$3,600	\$3,600	\$3,600	\$0	100.00%
ENVIRONMENTAL NETWORK CORPORATION	\$6,000	\$6,000	\$5,410	\$0	90.17%
HARLEY ELLIS DEVEREAUX	\$14,908	\$14,908	\$14,908	\$0	100.00%
NINYO & MOORE	\$29,981	\$29,981	\$29,771	\$0	99.30%
PCA ARBORISTS & CONSULTANTS INC	\$1,569	\$1,569	\$1,569	\$0	100.00%
THE CONVERSE PROFESSIONAL GROUP (Soils Investigation)	\$30,640	\$30,640	\$30,640	\$0	100.00%
	\$100,842	\$87,223	\$86,423	\$0	85.70%
4.12 Utility Connection Fees (Local Permits)					
UNCOMMITTED	\$76,261	\$0	\$0	\$0	
DIVISION OF STATE ARCHITECT	\$0	\$0	\$0	\$0	
SOUTHERN CALIFORNIA EDISON	\$3,665	\$3,665	\$3,665	\$0	100.00%
STATE WATER RESOURCES CONTROL BOARD (SWRCB)	\$993	\$993	\$993	\$0	100.00%
	\$80,919	\$4,658	\$4,658	\$0	5.76%
4.13 FF&E (Laboratory Tables and Chairs, other)					
UNCOMMITTED	\$37,999	\$0	\$0	\$0	
CDW GOVERNMENT INC (Parts for IP Camera Systems)	\$59,662	\$69,999	\$0	\$0	0.00%
INTER-PACIFIC INC	\$9,256	\$9,256	\$9,256	\$0	100.00%
SIERRA SCHOOL EQUIPMENT COMPANY	\$495,446	\$495,446	\$331,949	\$246,393	67.00%
TURTLE STORAGE dba AMERICAN BICYCLE CO	\$6,871	\$6,871	\$0	\$0	0.00%
VWR INTERNATIONAL LLC	\$47,922	\$52,714	\$47,922	\$39,049	100.00%
	\$657,156	\$634,286	\$389,127	\$285,442	59.21%
4.14 Legal Counsel					
UNCOMMITTED	\$0	\$0	\$0	\$0	
	\$0	\$0	\$0	\$0	
4.15 Miscellaneous Fees					
UNCOMMITTED	\$0	\$0	\$0	\$0	



Measure S Bond Program

Financial Report for September 2021

Budget vs Actuals - By School and Budget Category with Vendor Detail

QSS Data thru 9/30/2021

	Budget	Contracted to Date	Expended to Date	Quarterly Expense Jul '21 - Sep '21	% Expended
	\$0	\$0	\$0	\$0	
5. Contingency					
5.01 Construction Contingency					
UNCOMMITTED	\$1,661,123	\$0	\$0	\$0	
	\$1,661,123	\$0	\$0	\$0	0.00%
5.02 Project Contingency					
UNCOMMITTED	\$1,702,966	\$0	\$0	\$0	
ARCADIS U.S. INC	\$0	\$0	\$0	\$0	
	\$1,702,966	\$0	\$0	\$0	0.00%
Total 391-9520 El Modena HS Science Center (DSA 04-117098)	\$38,804,547	\$34,506,889	\$27,601,113	\$3,393,387	71.13%
391-9520 El Modena HS Phase II Planning and Design					
1. Design Cost					
1.01 Architect					
UNCOMMITTED	\$624	\$0	\$0	\$0	
HARLEY ELLIS DEVEREAUX	\$1,864,560	\$1,864,560	\$1,317,542	\$68,785	70.66%
	\$1,865,184	\$1,864,560	\$1,317,542	\$68,785	70.64%
3. Program and Construction Management					
3.01 Program Management Fees					
UNCOMMITTED	\$86,942	\$0	\$0	\$0	
CUMMING CONSTRUCTION MGMT INC	\$59,138	\$59,138	\$59,138	\$621	100.00%
	\$146,080	\$59,138	\$59,138	\$621	40.48%
3.02 Construction Management Fees					
UNCOMMITTED	\$0	\$0	\$0	\$0	
CORDOBA CORPORATION	\$301,850	\$301,850	\$53,715	\$2,013	17.80%
	\$301,850	\$301,850	\$53,715	\$2,013	17.80%
4. Construction Support Costs					
4.03 Commissioning					
UNCOMMITTED	\$0	\$0	\$0	\$0	
P2S ENGINEERING INC	\$11,890	\$11,890	\$3,330	\$3,330	28.01%
	\$11,890	\$11,890	\$3,330	\$3,330	28.01%
4.05 DSA Review Fees					
UNCOMMITTED	\$0	\$0	\$0	\$0	
DIVISION OF STATE ARCHITECT	\$212,750	\$212,750	\$212,750	\$0	100.00%
	\$212,750	\$212,750	\$212,750	\$0	100.00%
4.06 Postage, Printing & Advertising					
UNCOMMITTED	\$0	\$0	\$0	\$0	



Measure S Bond Program

Financial Report for September 2021

Budget vs Actuals - By School and Budget Category with Vendor Detail

QSS Data thru 9/30/2021

	Budget	Contracted to Date	Expended to Date	Quarterly Expense Jul '21 - Sep '21	% Expended
AMERICAN REPROGRAPHICS CO LLC	\$8,000	\$8,000	\$0	\$0	0.00%
	\$8,000	\$8,000	\$0	\$0	0.00%
4.09 Relocation					
UNCOMMITTED	\$0	\$0	\$0	\$0	
Beltmann Group, Inc.	\$3,500	\$3,500	\$0	\$0	0.00%
	\$3,500	\$3,500	\$0	\$0	0.00%
4.11 Preliminary Testing (Hazmat, Topo, Geo, etc)					
UNCOMMITTED	\$11,500	\$0	\$0	\$0	
ARMSTRONG & BROOKS CONSULTING ENG	\$20,000	\$20,000	\$4,940	\$0	24.70%
GROUP DELTA CONSULTANTS INC	\$17,100	\$17,100	\$10,004	\$0	58.50%
KOURY ENGINEERING & TESTING INC (Geotechnical Engineering)	\$22,350	\$22,350	\$22,350	\$0	100.00%
	\$70,950	\$59,450	\$37,294	\$0	52.56%
Total 391-9520 El Modena HS Phase II Planning and Design	\$2,620,204	\$2,521,138	\$1,683,769	\$74,749	64.26%
391-9520 El Modena HS Quad Shade Structures (DSA 04-119124)					
1. Design Cost					
1.01 Architect					
UNCOMMITTED	\$0	\$0	\$0	\$0	
HARLEY ELLIS DEVEREAUX	\$79,340	\$79,340	\$0	\$0	0.00%
	\$79,340	\$79,340	\$0	\$0	0.00%
4. Construction Support Costs					
4.05 DSA Review Fees					
UNCOMMITTED	\$0	\$0	\$0	\$0	
DIVISION OF STATE ARCHITECT	\$9,650	\$9,650	\$9,650	\$0	100.00%
	\$9,650	\$9,650	\$9,650	\$0	100.00%
4.06 Postage, Printing & Advertising					
UNCOMMITTED	\$0	\$0	\$0	\$0	
AMERICAN REPROGRAPHICS CO LLC	\$86	\$86	\$86	\$0	100.00%
	\$86	\$86	\$86	\$0	100.00%
Total 391-9520 El Modena HS Quad Shade Structures (DSA 04-119124)	\$89,076	\$89,076	\$9,736	\$0	10.93%
391-TBD El Modena HS Science Center Unallocated Funds F22					
5. Unallocated Bond Funds					
5.04 Unallocated Bond Funds					
UNCOMMITTED	\$1,138,078	\$0	\$0	\$0	
	\$1,138,078	\$0	\$0	\$0	0.00%
Total 391-TBD El Modena HS Science Center Unallocated Funds F22	\$1,138,078	\$0	\$0	\$0	0.00%



Measure S Bond Program

Financial Report for September 2021

Budget vs Actuals - By School and Budget Category with Vendor Detail

QSS Data thru 9/30/2021

	Budget	Contracted to Date	Expended to Date	Quarterly Expense Jul '21 - Sep '21	% Expended
391-9520 El Modena HS Unallocated Funds F21					
4. Construction Support Costs					
4.15 Miscellaneous Fees					
UNCOMMITTED	\$0	\$0	\$0	\$0	
OUSD COST OF INTEREST DISTRIBUTION	\$22,550	\$22,550	\$22,550	\$0	100.00%
	\$22,550	\$22,550	\$22,550	\$0	100.00%
5. Program Reserve					
5.03 Interest Earned - Reserve					
UNCOMMITTED	\$0	\$0	\$0	\$0	
	\$0	\$0	\$0	\$0	
Total 391-9520 El Modena HS Unallocated Funds F21	\$22,550	\$22,550	\$22,550	\$0	100.00%
391-TBD El Modena HS Unallocated Funds F22					
5. Unallocated Bond Funds					
5.04 Unallocated Bond Funds					
UNCOMMITTED	\$30,017,362	\$0	\$0	\$0	
	\$30,017,362	\$0	\$0	\$0	0.00%
Total 391-TBD El Modena HS Unallocated Funds F22	\$30,017,362	\$0	\$0	\$0	0.00%
El Modena High School	\$72,772,997	\$37,220,833	\$29,398,348	\$3,468,136	40.40%
Orange High School					
392-0000 Orange HS IP Surveillance Camera and Systems					
4. Construction Support Costs					
4.13 FF&E (Laboratory Tables and Chairs, other)					
UNCOMMITTED	\$0	\$0	\$0	\$0	
CDW GOVERNMENT INC (Parts for IP Camera Systems)	\$53,662	\$53,662	\$53,662	\$0	100.00%
DIGITAL NETWORKS GROUP INC (F/I IP Camera Software)	\$13,569	\$13,569	\$13,569	\$0	100.00%
INTER-PACIFIC INC	\$34,837	\$34,837	\$34,837	\$0	100.00%
	\$102,068	\$102,068	\$102,068	\$0	100.00%
Total 392-0000 Orange HS IP Surveillance Camera and Systems	\$102,068	\$102,068	\$102,068	\$0	100.00%
392-9520 Orange HS Science Bldg (DSA 04-116859)					
1. Design Cost					
1.01 Architect					
UNCOMMITTED	\$151,933	\$0	\$0	\$0	



Measure S Bond Program

Financial Report for September 2021

Budget vs Actuals - By School and Budget Category with Vendor Detail

QSS Data thru 9/30/2021

	Budget	Contracted to Date	Expended to Date	Quarterly Expense Jul '21 - Sep '21	% Expended
LIONAKIS	\$1,854,196	\$1,854,196	\$1,823,364	\$1,840	98.34%
	\$2,006,129	\$1,854,196	\$1,823,364	\$1,840	90.89%

2. Construction Cost

2.01 Construction

UNCOMMITTED	\$1	\$0	\$0	\$0	
GIANNELLI ELECTRIC INC	\$14,878	\$14,878	\$14,878	\$0	100.00%
INTEGRATED DEMOLITION AND REMEDIATION (Abatement and Demolition)	\$44,800	\$44,800	\$44,800	\$0	100.00%
J & A FENCE (Custodial Storage Fencing)	\$0	\$0	\$0	\$0	
KYA SERVICES LLC (Install Carpet)	\$0	\$0	\$0	\$0	
OLESH, KEITH (Termite Services)	\$0	\$0	\$0	\$0	
PINNER CONSTRUCTION	\$27,190,987	\$27,190,987	\$27,190,987	\$23,485	100.00%
SOUTHERN CALIFORNIA NEWS GROUP	\$0	\$0	\$0	\$0	
TIME & ALARM SYSTEMS	\$3,100	\$3,100	\$3,100	\$0	100.00%
UNIVERSAL ASPHALT CO (Remove and Patch Asphalt)	\$6,830	\$6,830	\$6,830	\$0	100.00%
	\$27,260,596	\$27,260,595	\$27,260,595	\$23,485	100.00%

2.02 OFCI and Other Construction

UNCOMMITTED	\$69,720	\$0	\$0	\$0	
ACCO ENGINEERED SYSTEMS INC	\$62,883	\$62,883	\$62,883	\$0	100.00%
AMERICAN REPROGRAPHICS CO LLC	\$1,026	\$1,026	\$0	\$0	0.00%
ARROW RESTAURANT EQUIPMENT	\$13,556	\$13,556	\$13,432	\$0	99.08%
CAROLINA BIOLOGICAL SUPPLY	\$16,559	\$16,559	\$16,480	\$0	99.52%
CITY OF ORANGE (PUBLIC WORKS)	\$2,000	\$2,000	\$2,000	\$0	100.00%
DEVELOPMENT GROUP INC	\$37,866	\$37,866	\$37,866	\$0	100.00%
FISHER SCIENCE EDUCATION	\$25,736	\$25,736	\$24,863	\$6,463	96.61%
FLINN SCIENTIFIC INC	\$10,263	\$10,263	\$10,263	\$0	100.00%
GIANNELLI ELECTRIC INC	\$24,684	\$24,684	\$24,684	\$0	100.00%
GRUETT TREE CO INC (Removal of Trees)	\$7,625	\$7,625	\$7,625	\$0	100.00%
J & A FENCE (Custodial Storage Fencing)	\$6,885	\$6,885	\$6,885	\$0	100.00%
KYA SERVICES LLC (Install Carpet)	\$0	\$0	\$0	\$0	
OLESH, KEITH (Termite Services)	\$1,500	\$1,500	\$1,500	\$0	100.00%
SOUTHERN CALIFORNIA NEWS GROUP	\$0	\$0	\$0	\$0	
TRIMARK RAYGAL LLC	\$0	\$0	\$0	\$0	
VORTEX INDUSTRIES, INC.	\$6,804	\$6,804	\$6,804	\$0	100.00%
WW GRAINGER INC	\$2,292	\$2,292	\$2,292	\$0	100.00%
	\$289,399	\$219,679	\$217,576	\$6,463	75.18%

3. Program and Construction Management

3.01 Program Management Fees

UNCOMMITTED	\$542,973	\$0	\$0	\$0	
-------------	-----------	-----	-----	-----	--



Measure S Bond Program

Financial Report for September 2021

Budget vs Actuals - By School and Budget Category with Vendor Detail

QSS Data thru 9/30/2021

	Budget	Contracted to Date	Expended to Date	Quarterly Expense Jul '21 - Sep '21	% Expended
CUMMING CONSTRUCTION MGMT INC	\$998,778	\$1,050,959	\$968,160	\$67,216	96.93%
	\$1,541,750	\$1,050,959	\$968,160	\$67,216	62.80%
3.02 Construction Management Fees					
UNCOMMITTED	\$59,981	\$0	\$0	\$0	
BALFOUR BEATTY CONSTRUCTION	\$1,757,253	\$1,757,254	\$1,755,159	\$0	99.88%
CORDOBA CORPORATION	\$86,549	\$86,549	\$86,434	\$0	99.87%
	\$1,903,783	\$1,843,803	\$1,841,593	\$0	96.73%
4. Construction Support Costs					
4.01 Rental					
UNCOMMITTED	\$0	\$0	\$0	\$0	
	\$0	\$0	\$0	\$0	
4.02 Title, Environmental, Stormwater Management					
UNCOMMITTED	\$47,386	\$0	\$0	\$0	
CHICAGO TITLE COMPANY	\$1,500	\$1,500	\$1,500	\$0	100.00%
OUSD COST OF INTEREST DISTRIBUTION	\$1	\$1	\$1	\$0	100.00%
PLACEWORKS INC	\$52,231	\$52,231	\$52,231	\$0	100.00%
STATE WATER RESOURCES CONTROL BOARD (SWRCB)	\$726	\$726	\$726	\$0	100.00%
	\$101,844	\$54,458	\$54,458	\$0	53.47%
4.03 Commissioning					
UNCOMMITTED	\$6,117	\$0	\$0	\$0	
P2S ENGINEERING INC	\$30,585	\$30,585	\$30,170	\$0	98.64%
	\$36,702	\$30,585	\$30,170	\$0	82.20%
4.04 Builders Risk Insurance					
UNCOMMITTED	\$0	\$0	\$0	\$0	
	\$0	\$0	\$0	\$0	
4.05 DSA Review Fees					
UNCOMMITTED	\$28,992	\$0	\$0	\$0	
DIVISION OF STATE ARCHITECT	\$342,871	\$342,871	\$342,871	\$90,121	100.00%
OUSD REVOLVING CASH	\$500	\$500	\$500	\$0	100.00%
	\$372,364	\$343,371	\$343,371	\$90,121	92.21%
4.06 Postage, Printing & Advertising					
UNCOMMITTED	\$36,374	\$0	\$0	\$0	
AMERICAN REPROGRAPHICS CO LLC	\$11,734	\$11,734	\$8,734	\$0	74.43%
SOUTHERN CALIFORNIA NEWS GROUP	\$8,518	\$8,518	\$8,518	\$0	100.00%
	\$56,626	\$20,252	\$17,252	\$0	30.47%
4.07 DSA Inspection (IOR)					
UNCOMMITTED	\$145,585	\$0	\$0	\$0	
KNOWLAND CONSTRUCTION SERVICES	\$321,507	\$321,507	\$286,404	\$0	89.08%
	\$467,092	\$321,507	\$286,404	\$0	61.32%
4.08 DSA Construction Phase Testing (LOR)					



Measure S Bond Program

Financial Report for September 2021

Budget vs Actuals - By School and Budget Category with Vendor Detail

QSS Data thru 9/30/2021

	Budget	Contracted to Date	Expended to Date	Quarterly Expense Jul '21 - Sep '21	% Expended
UNCOMMITTED	\$125,025	\$0	\$0	\$0	
NINYO & MOORE	\$327,624	\$327,624	\$227,848	\$4,904	69.55%
	\$452,649	\$327,624	\$227,848	\$4,904	50.34%
4.09 Relocation					
UNCOMMITTED	\$15,671	\$0	\$0	\$0	
Beltmann Group, Inc.	\$6,229	\$6,229	\$4,876	\$0	78.27%
ULINE INC	\$3,100	\$3,100	\$3,065	\$0	98.86%
	\$25,000	\$9,329	\$7,941	\$0	31.76%
4.10 Labor Compliance					
UNCOMMITTED	\$40,951	\$0	\$0	\$0	
	\$40,951	\$0	\$0	\$0	0.00%
4.11 Preliminary Testing (Hazmat, Topo, Geo, etc)					
UNCOMMITTED	\$198,437	\$0	\$0	\$0	
CALIFORNIA GEOLOGICAL SURVEY (Geology and Seismology Review)	\$3,600	\$3,600	\$3,600	\$0	100.00%
ENVIRONMENTAL NETWORK CORPORATION	\$4,925	\$4,925	\$2,590	\$0	52.59%
KOURY ENGINEERING & TESTING INC (Geotechnical Engineering)	\$13,300	\$13,300	\$13,300	\$0	100.00%
PENCO ENGINEERING INC (Topographical Survey Services)	\$42,350	\$42,350	\$41,070	\$0	96.98%
RMA GROUP (dba SITESCAN)	\$49,533	\$49,533	\$49,533	\$0	100.00%
	\$312,145	\$113,708	\$110,093	\$0	35.27%
4.12 Utility Connection Fees (Local Permits)					
UNCOMMITTED	\$151,714	\$0	\$0	\$0	
CITY OF ORANGE (PUBLIC WORKS)	\$2,500	\$2,500	\$2,500	\$0	100.00%
SOUTHERN CALIFORNIA EDISON	\$6,912	\$6,912	\$6,912	\$0	100.00%
SOUTHERN CALIFORNIA GAS CO	\$2,124	\$2,124	\$2,124	\$0	100.00%
STATE WATER RESOURCES CONTROL BOARD (SWRCB)	\$553	\$553	\$553	\$0	100.00%
	\$163,803	\$12,089	\$12,089	\$0	7.38%
4.13 FF&E (Laboratory Tables and Chairs, other)					
UNCOMMITTED	\$10,748	\$0	\$0	\$0	
CDW GOVERNMENT INC (Parts for IP Camera Systems)	\$59,662	\$59,662	\$59,658	\$0	99.99%
CONEXWEST	\$9,466	\$9,466	\$9,419	\$0	99.51%
CP PRODUCTS INC	\$4,834	\$4,834	\$4,834	\$0	100.00%
DEVELOPMENT GROUP INC	\$0	\$0	\$0	\$0	
FISHER SCIENCE EDUCATION	\$0	\$0	\$0	\$0	
GORM	\$11,423	\$11,423	\$11,415	\$4,173	99.93%
HILLYARD INC	\$32,572	\$32,572	\$32,572	\$0	100.00%
INTER-PACIFIC INC	\$7,904	\$7,904	\$7,904	\$0	100.00%
PSI DBA WATER VISIONS INC	\$8,527	\$8,527	\$8,527	\$0	100.00%
SIERRA SCHOOL EQUIPMENT COMPANY	\$464,248	\$464,248	\$464,248	\$0	100.00%
TURTLE STORAGE dba AMERICAN BICYCLE CO	\$6,871	\$6,871	\$6,537	\$0	95.14%
VORTEX INDUSTRIES, INC.	\$0	\$0	\$0	\$0	



Measure S Bond Program

Financial Report for September 2021

Budget vs Actuals - By School and Budget Category with Vendor Detail

QSS Data thru 9/30/2021

	Budget	Contracted to Date	Expended to Date	Quarterly Expense Jul '21 - Sep '21	% Expended
VWR INTERNATIONAL LLC	\$34,314	\$34,314	\$34,314	\$0	100.00%
	\$650,570	\$639,821	\$639,428	\$4,173	98.29%
4.14 Legal Counsel					
UNCOMMITTED	\$81,902	\$0	\$0	\$0	
	\$81,902	\$0	\$0	\$0	0.00%
4.15 Miscellaneous Fees					
UNCOMMITTED	\$0	\$0	\$0	\$0	
	\$0	\$0	\$0	\$0	
5. Contingency					
5.01 Construction Contingency					
UNCOMMITTED	\$1,415,413	\$0	\$0	\$0	
	\$1,415,413	\$0	\$0	\$0	0.00%
5.02 Project Contingency					
UNCOMMITTED	\$4,690,464	\$0	\$0	\$0	
	\$4,690,464	\$0	\$0	\$0	0.00%
Total 392-9520 Orange HS Science Bldg (DSA 04-116859)	\$41,869,182	\$34,101,976	\$33,840,341	\$198,202	80.82%
392-9520 Orange HS Shade Structure (DSA 04-118351)					
1. Design Cost					
1.01 Architect					
UNCOMMITTED	\$0	\$0	\$0	\$0	
LIONAKIS	\$17,317	\$17,317	\$17,317	\$0	100.00%
	\$17,317	\$17,317	\$17,317	\$0	100.00%
2. Construction Cost					
2.01 Construction					
UNCOMMITTED	\$0	\$0	\$0	\$0	
PINNER CONSTRUCTION	\$113,500	\$113,500	\$113,500	\$0	100.00%
	\$113,500	\$113,500	\$113,500	\$0	100.00%
3. Program and Construction Management					
3.01 Program Management Fees					
UNCOMMITTED	\$0	\$0	\$0	\$0	
CUMMING CONSTRUCTION MGMT INC	\$1,838	\$1,838	\$1,838	\$0	100.00%
	\$1,838	\$1,838	\$1,838	\$0	100.00%
3.02 Construction Management Fees					
UNCOMMITTED	\$0	\$0	\$0	\$0	
BALFOUR BEATTY CONSTRUCTION	\$5,956	\$5,956	\$5,956	\$0	100.00%
	\$5,956	\$5,956	\$5,956	\$0	100.00%



Measure S Bond Program

Financial Report for September 2021

Budget vs Actuals - By School and Budget Category with Vendor Detail

QSS Data thru 9/30/2021

	Budget	Contracted to Date	Expended to Date	Quarterly Expense Jul '21 - Sep '21	% Expended
4. Construction Support Costs					
4.05 DSA Review Fees					
UNCOMMITTED	\$0	\$0	\$0	\$0	
DIVISION OF STATE ARCHITECT	\$1,873	\$1,873	\$1,873	\$0	100.00%
	\$1,873	\$1,873	\$1,873	\$0	100.00%
4.07 DSA Inspection (IOR)					
UNCOMMITTED	\$0	\$0	\$0	\$0	
KNOWLAND CONSTRUCTION SERVICES	\$1,740	\$1,740	\$1,740	\$0	100.00%
	\$1,740	\$1,740	\$1,740	\$0	100.00%
4.08 DSA Construction Phase Testing (LOR)					
UNCOMMITTED	\$0	\$0	\$0	\$0	
NINYO & MOORE	\$7,408	\$7,408	\$7,408	\$0	100.00%
	\$7,408	\$7,408	\$7,408	\$0	100.00%
Total 392-9520 Orange HS Shade Structure (DSA 04-118351)	\$149,631	\$149,631	\$149,631	\$0	100.00%
392-9520 Orange HS Site Improvements (DSA 04-116673)					
1. Design Cost					
1.01 Architect					
UNCOMMITTED	\$0	\$0	\$0	\$0	
LIONAKIS	\$450,189	\$450,189	\$446,286	\$0	99.13%
SILVER CREEK INDUSTRIES INC (Engineering for Warming Kitchen Relocatable Building)	\$29,682	\$29,682	\$29,682	\$0	100.00%
	\$479,871	\$479,871	\$475,968	\$0	99.19%
2. Construction Cost					
2.01 Construction					
UNCOMMITTED	\$0	\$0	\$0	\$0	
KYA SERVICES LLC (Install Carpet)	\$20,824	\$20,824	\$9,564	\$0	45.93%
SWINERTON BUILDERS	\$6,556,428	\$6,556,428	\$6,556,428	\$0	100.00%
TRIMARK RAYGAL LLC	\$89,860	\$89,860	\$89,860	\$0	100.00%
	\$6,667,112	\$6,667,112	\$6,655,852	\$0	99.83%
2.02 OFCI and Other Construction					
UNCOMMITTED	\$0	\$0	\$0	\$0	
ACCO ENGINEERED SYSTEMS INC	\$209,074	\$209,074	\$209,074	\$0	100.00%
	\$209,074	\$209,074	\$209,074	\$0	100.00%
3. Program and Construction Management					
3.01 Program Management Fees					
UNCOMMITTED	\$0	\$0	\$0	\$0	



Measure S Bond Program

Financial Report for September 2021

Budget vs Actuals - By School and Budget Category with Vendor Detail

QSS Data thru 9/30/2021

	Budget	Contracted to Date	Expended to Date	Quarterly Expense Jul '21 - Sep '21	% Expended
CUMMING CONSTRUCTION MGMT INC	\$115,479	\$115,479	\$115,479	\$0	100.00%
	\$115,479	\$115,479	\$115,479	\$0	100.00%
3.02 Construction Management Fees					
UNCOMMITTED	\$0	\$0	\$0	\$0	
BALFOUR BEATTY CONSTRUCTION	\$296,554	\$296,554	\$296,554	\$0	100.00%
	\$296,554	\$296,554	\$296,554	\$0	100.00%
4. Construction Support Costs					
4.02 Title, Environmental, Stormwater Management					
UNCOMMITTED	\$0	\$0	\$0	\$0	
ORANGE COUNTY HEALTH CARE AGENCY	\$1,470	\$1,470	\$1,470	\$0	100.00%
	\$1,470	\$1,470	\$1,470	\$0	100.00%
4.03 Commissioning					
UNCOMMITTED	\$0	\$0	\$0	\$0	
P2S ENGINEERING INC	\$4,755	\$4,755	\$4,667	\$0	98.15%
	\$4,755	\$4,755	\$4,667	\$0	98.15%
4.05 DSA Review Fees					
UNCOMMITTED	\$3,853	\$0	\$0	\$0	
DIVISION OF STATE ARCHITECT	\$94,585	\$94,585	\$94,585	\$0	100.00%
	\$98,438	\$94,585	\$94,585	\$0	96.09%
4.06 Postage, Printing & Advertising					
UNCOMMITTED	\$1	\$0	\$0	\$0	
AMERICAN REPROGRAPHICS CO LLC	\$7,630	\$7,630	\$7,630	\$0	100.00%
SOUTHERN CALIFORNIA NEWS GROUP	\$1,264	\$1,264	\$1,264	\$0	100.00%
	\$8,895	\$8,894	\$8,894	\$0	99.99%
4.07 DSA Inspection (IOR)					
UNCOMMITTED	\$0	\$0	\$0	\$0	
KNOWLAND CONSTRUCTION SERVICES	\$104,480	\$104,480	\$96,985	\$0	92.83%
	\$104,480	\$104,480	\$96,985	\$0	92.83%
4.08 DSA Construction Phase Testing (LOR)					
UNCOMMITTED	\$0	\$0	\$0	\$0	
NINYO & MOORE	\$113,255	\$113,255	\$112,544	\$0	99.37%
	\$113,255	\$113,255	\$112,544	\$0	99.37%
4.11 Preliminary Testing (Hazmat, Topo, Geo, etc)					
UNCOMMITTED	\$0	\$0	\$0	\$0	
ENVIRONMENTAL NETWORK CORPORATION	\$9,100	\$9,100	\$9,012	\$0	99.03%
	\$9,100	\$9,100	\$9,012	\$0	99.03%
Total 392-9520 Orange HS Site Improvements (DSA 04-116673)	\$8,108,482	\$8,104,629	\$8,081,083	\$0	99.66%

392-9520 Orange HS Phase II Planning and Design



Measure S Bond Program

Financial Report for September 2021

Budget vs Actuals - By School and Budget Category with Vendor Detail

QSS Data thru 9/30/2021

	Budget	Contracted to Date	Expended to Date	Quarterly Expense Jul '21 - Sep '21	% Expended
1. Design Cost					
1.01 Architect					
UNCOMMITTED	\$121,050	\$0	\$0	\$0	
LIONAKIS	\$1,409,450	\$1,409,450	\$915,598	\$82,545	64.96%
	\$1,530,500	\$1,409,450	\$915,598	\$82,545	59.82%
3. Program and Construction Management					
3.01 Program Management Fees					
UNCOMMITTED	\$438	\$0	\$0	\$0	
CUMMING CONSTRUCTION MGMT INC	\$49,399	\$49,399	\$49,399	\$519	100.00%
	\$49,837	\$49,399	\$49,399	\$519	99.12%
3.02 Construction Management Fees					
UNCOMMITTED	\$2,100	\$0	\$0	\$0	
CORDOBA CORPORATION	\$369,950	\$369,950	\$49,728	\$46,013	13.44%
	\$372,050	\$369,950	\$49,728	\$46,013	13.37%
4. Construction Support Costs					
4.03 Commissioning					
UNCOMMITTED	\$0	\$0	\$0	\$0	
P2S ENGINEERING INC	\$4,801	\$4,801	\$1,025	\$1,025	21.35%
	\$4,801	\$4,801	\$1,025	\$1,025	21.35%
4.05 DSA Review Fees					
UNCOMMITTED	\$0	\$0	\$0	\$0	
DIVISION OF STATE ARCHITECT	\$153,550	\$153,550	\$153,550	\$0	100.00%
	\$153,550	\$153,550	\$153,550	\$0	100.00%
4.06 Postage, Printing & Advertising					
UNCOMMITTED	\$0	\$0	\$0	\$0	
AMERICAN REPROGRAPHICS CO LLC	\$14,000	\$14,000	\$137	\$137	0.98%
	\$14,000	\$14,000	\$137	\$137	0.98%
4.09 Relocation					
UNCOMMITTED	\$0	\$0	\$0	\$0	
Beltmann Group, Inc.	\$6,851	\$6,851	\$6,519	\$6,519	95.15%
	\$6,851	\$6,851	\$6,519	\$6,519	95.15%
4.11 Preliminary Testing (Hazmat, Topo, Geo, etc)					
UNCOMMITTED	\$53,089	\$0	\$0	\$0	
CANNON CORPORATION	\$50,000	\$50,000	\$35,076	\$0	70.15%
ENVIRONMENTAL NETWORK CORPORATION	\$15,380	\$15,380	\$6,350	\$0	41.29%
NINYO & MOORE	\$20,955	\$20,955	\$20,955	\$0	100.00%
	\$139,424	\$86,335	\$62,381	\$0	44.74%
Total 392-9520 Orange HS Phase II Planning and Design	\$2,271,013	\$2,094,336	\$1,238,336	\$136,757	54.53%



Measure S Bond Program

Financial Report for September 2021

Budget vs Actuals - By School and Budget Category with Vendor Detail

QSS Data thru 9/30/2021

	Budget	Contracted to Date	Expended to Date	Quarterly Expense Jul '21 - Sep '21	% Expended
392-TBD Orange HS Science Center Unallocated Funds F22					
5. Unallocated Bond Funds					
5.04 Unallocated Bond Funds					
UNCOMMITTED	\$1,520,780	\$0	\$0	\$0	
	\$1,520,780	\$0	\$0	\$0	0.00%
Total 392-TBD Orange HS Science Center Unallocated Funds F22	\$1,520,780	\$0	\$0	\$0	0.00%
392-9520 Orange HS Unallocated Funds F21					
5. Program Reserve					
5.03 Interest Earned - Reserve					
UNCOMMITTED	\$840,506	\$0	\$0	\$0	
	\$840,506	\$0	\$0	\$0	0.00%
4. Construction Support Costs					
4.15 Miscellaneous Fees					
UNCOMMITTED	\$0	\$0	\$0	\$0	
OUSD COST OF INTEREST DISTRIBUTION	\$25,457	\$25,457	\$25,457	\$0	100.00%
	\$25,457	\$25,457	\$25,457	\$0	100.00%
Total 392-9520 Orange HS Unallocated Funds F21	\$865,963	\$25,457	\$25,457	\$0	2.94%
392-TBD Orange HS Unallocated Funds F22					
5. Unallocated Bond Funds					
5.04 Unallocated Bond Funds					
UNCOMMITTED	\$17,978,844	\$0	\$0	\$0	
	\$17,978,844	\$0	\$0	\$0	0.00%
Total 392-TBD Orange HS Unallocated Funds F22	\$17,978,844	\$0	\$0	\$0	0.00%
Orange High School	\$72,865,963	\$44,578,096	\$43,436,916	\$334,958	59.61%
Villa Park High School					
394-0000 Villa Park HS IP Surveillance Camera and Systems					
4. Construction Support Costs					
4.13 FF&E (Laboratory Tables and Chairs, other)					
UNCOMMITTED	\$0	\$0	\$0	\$0	
CDW GOVERNMENT INC (Parts for IP Camera Systems)	\$32,182	\$32,182	\$32,182	\$0	100.00%
DIGITAL NETWORKS GROUP INC (F/I IP Camera Software)	\$8,635	\$8,635	\$8,635	\$0	100.00%
INTER-PACIFIC INC	\$22,133	\$22,133	\$22,133	\$0	100.00%



Measure S Bond Program

Financial Report for September 2021

Budget vs Actuals - By School and Budget Category with Vendor Detail

QSS Data thru 9/30/2021

	Budget	Contracted to Date	Expended to Date	Quarterly Expense Jul '21 - Sep '21	% Expended
	\$62,949	\$62,949	\$62,949	\$0	100.00%
Total 394-0000 Villa Park HS IP Surveillance Camera and Systems	\$62,949	\$62,949	\$62,949	\$0	100.00%
394-9520 Villa Park HS Science Center (DSA 04-117022)					
1. Design Cost					
1.01 Architect					
UNCOMMITTED	\$132,416	\$0	\$0	\$0	
DKS ASSOCIATES	\$85,690	\$85,690	\$80,657	\$0	94.13%
LIONAKIS	\$14,059	\$14,059	\$14,059	\$0	100.00%
LPA INC	\$2,472,131	\$2,472,131	\$2,382,176	\$80,236	96.36%
	\$2,704,296	\$2,571,880	\$2,476,892	\$80,236	91.59%
2. Construction Cost					
2.01 Construction					
UNCOMMITTED	\$138,538	\$0	\$0	\$0	
ANGELES CONTRACTOR, INC	\$20,232,690	\$20,232,690	\$14,717,197	\$4,204,756	72.74%
	\$20,371,228	\$20,232,690	\$14,717,197	\$4,204,756	72.25%
2.02 OFCI and Other Construction					
UNCOMMITTED	\$111,781	\$0	\$0	\$0	
ACCO ENGINEERED SYSTEMS INC	\$150,829	\$150,829	\$127,947	\$0	84.83%
AMERICAN REPROGRAPHICS CO LLC	\$1,026	\$1,026	\$0	\$0	0.00%
ARROW RESTAURANT EQUIPMENT	\$13,887	\$13,887	\$13,869	\$0	99.86%
CAROLINA BIOLOGICAL SUPPLY	\$24,213	\$24,213	\$0	\$0	0.00%
DEVELOPMENT GROUP INC	\$52,939	\$52,939	\$52,937	\$0	100.00%
FISHER SCIENCE EDUCATION	\$26,187	\$26,187	\$21,027	\$0	80.29%
FLINN SCIENTIFIC INC	\$12,364	\$12,364	\$0	\$0	0.00%
WW GRAINGER INC	\$3,043	\$3,043	\$1,148	\$1,039	37.74%
	\$396,269	\$284,488	\$216,927	\$1,039	54.74%
3. Program and Construction Management					
3.01 Program Management Fees					
UNCOMMITTED	\$283,964	\$0	\$0	\$0	
CORDOBA CORPORATION	\$0	\$0	\$0	\$0	
CUMMING CONSTRUCTION MGMT INC	\$781,817	\$880,229	\$763,957	\$20,351	97.72%
	\$1,065,781	\$880,229	\$763,957	\$20,351	71.68%
3.02 Construction Management Fees					
UNCOMMITTED	\$6,082	\$0	\$0	\$0	
CORDOBA CORPORATION	\$1,998,493	\$1,998,493	\$1,956,156	\$39,868	97.88%
	\$2,004,575	\$1,998,493	\$1,956,156	\$39,868	97.58%



Measure S Bond Program
Financial Report for September 2021
Budget vs Actuals - By School and Budget Category with Vendor Detail

QSS Data thru 9/30/2021

	Budget	Contracted to Date	Expended to Date	Quarterly Expense Jul '21 - Sep '21	% Expended
4. Construction Support Costs					
4.01 Rental					
UNCOMMITTED	\$0	\$0	\$0	\$0	
	\$0	\$0	\$0	\$0	0.00%
4.02 Title, Environmental, Stormwater Management					
UNCOMMITTED	\$36,668	\$0	\$0	\$0	
CHICAGO TITLE COMPANY	\$750	\$750	\$750	\$0	100.00%
OUSD COST OF INTEREST DISTRIBUTION	\$1	\$1	\$1	\$0	100.00%
PLACEWORKS INC	\$87,059	\$87,059	\$73,237	\$0	84.12%
STATE WATER RESOURCES CONTROL BOARD (SWRCB)	\$484	\$484	\$484	\$0	100.00%
	\$124,962	\$88,294	\$74,471	\$0	59.60%
4.03 Commissioning					
UNCOMMITTED	\$9,722	\$0	\$0	\$0	
P2S ENGINEERING INC	\$31,635	\$31,635	\$26,688	\$674	84.36%
	\$41,357	\$31,635	\$26,688	\$674	64.53%
4.04 Builders Risk Insurance					
UNCOMMITTED	\$0	\$0	\$0	\$0	
	\$0	\$0	\$0	\$0	
4.05 DSA Review Fees					
UNCOMMITTED	\$117,302	\$0	\$0	\$0	
DIVISION OF STATE ARCHITECT	\$289,250	\$289,250	\$289,250	\$0	100.00%
	\$406,552	\$289,250	\$289,250	\$0	71.15%
4.06 Postage, Printing & Advertising					
UNCOMMITTED	\$15,465	\$0	\$0	\$0	
AMERICAN REPROGRAPHICS CO LLC	\$16,315	\$16,315	\$12,630	\$0	77.41%
SOUTHERN CALIFORNIA NEWS GROUP	\$1,768	\$1,768	\$1,768	\$0	100.00%
	\$33,548	\$18,083	\$14,398	\$0	42.92%
4.07 DSA Inspection (IOR)					
UNCOMMITTED	\$1	\$0	\$0	\$0	
BPI INSPECTION SERVICE	\$606,215	\$606,215	\$457,093	\$96,058	75.40%
	\$606,216	\$606,215	\$457,093	\$96,058	75.40%
4.08 DSA Construction Phase Testing (LOR)					
UNCOMMITTED	\$0	\$0	\$0	\$0	
NINYO & MOORE	\$755,557	\$755,557	\$748,235	\$2,677	99.03%
	\$755,557	\$755,557	\$748,235	\$2,677	99.03%
4.09 Relocation					
UNCOMMITTED	\$15,700	\$0	\$0	\$0	
Beltmann Group, Inc.	\$7,080	\$7,080	\$851	\$0	12.02%
ULINE INC	\$1,860	\$1,860	\$702	\$0	37.75%
	\$24,640	\$8,940	\$1,553	\$0	6.30%
4.10 Labor Compliance					



Measure S Bond Program

Financial Report for September 2021

Budget vs Actuals - By School and Budget Category with Vendor Detail

QSS Data thru 9/30/2021

	Budget	Contracted to Date	Expended to Date	Quarterly Expense Jul '21 - Sep '21	% Expended
UNCOMMITTED	\$0	\$0	\$0	\$0	
	\$0	\$0	\$0	\$0	
4.11 Preliminary Testing (Hazmat, Topo, Geo, etc)					
UNCOMMITTED	\$1,657	\$0	\$0	\$0	
CALIFORNIA GEOLOGICAL SURVEY (Geology and Seismology Review)	\$3,600	\$3,600	\$3,600	\$0	100.00%
ENVIRONMENTAL NETWORK CORPORATION	\$19,215	\$19,215	\$19,085	\$0	99.32%
LEIGHTON CONSULTING INC (Geotechnical Engineering)	\$20,000	\$20,000	\$16,549	\$0	82.75%
PSOMAS	\$27,000	\$27,000	\$21,034	\$0	77.90%
RMA GROUP (dba SITESCAN)	\$53,125	\$53,125	\$44,890	\$0	84.50%
SPECTRUM FIRE PROTECTION (Fire Hydrant Flow Test)	\$1,000	\$1,000	\$1,000	\$0	100.00%
	\$125,597	\$123,940	\$106,158	\$0	84.52%
4.12 Utility Connection Fees (Local Permits)					
UNCOMMITTED	\$78,806	\$0	\$0	\$0	
SOUTHERN CALIFORNIA EDISON	\$400	\$400	\$400	\$0	100.00%
STATE WATER RESOURCES CONTROL BOARD (SWRCB)	\$1,699	\$1,699	\$1,699	\$0	100.00%
	\$80,905	\$2,099	\$2,099	\$0	2.59%
4.13 FF&E (Laboratory Tables and Chairs, other)					
UNCOMMITTED	\$86,460	\$0	\$0	\$0	
CDW GOVERNMENT INC (Parts for IP Camera Systems)	\$59,662	\$65,624	\$0	\$0	0.00%
CULVER-NEWLIN INC	\$12,359	\$12,359	\$12,359	\$0	100.00%
FLINN SCIENTIFIC INC	\$4,162	\$4,162	\$4,162	\$4,162	100.00%
INTER-PACIFIC INC	\$7,325	\$7,325	\$7,325	\$0	100.00%
SIERRA SCHOOL EQUIPMENT COMPANY	\$485,250	\$485,250	\$232,706	\$232,706	47.96%
TURTLE STORAGE dba AMERICAN BICYCLE CO	\$6,871	\$6,871	\$6,871	\$0	100.00%
VWR INTERNATIONAL LLC	\$47,922	\$52,714	\$47,922	\$39,049	100.00%
	\$710,011	\$634,305	\$311,345	\$275,917	43.85%
4.14 Legal Counsel					
UNCOMMITTED	\$33,146	\$0	\$0	\$0	
	\$33,146	\$0	\$0	\$0	0.00%
5. Contingency					
5.01 Construction Contingency					
UNCOMMITTED	\$1,135,815	\$0	\$0	\$0	
	\$1,135,815	\$0	\$0	\$0	0.00%
5.02 Project Contingency					
UNCOMMITTED	\$7,649,432	\$0	\$0	\$0	
	\$7,649,432	\$0	\$0	\$0	0.00%
Total 394-9520 Villa Park HS Science Center (DSA 04-117022)	\$38,269,887	\$28,526,097	\$22,162,417	\$4,721,574	57.91%



Measure S Bond Program

Financial Report for September 2021

Budget vs Actuals - By School and Budget Category with Vendor Detail

QSS Data thru 9/30/2021

	Budget	Contracted to Date	Expended to Date	Quarterly Expense Jul '21 - Sep '21	% Expended
394-9520 Villa Park HS Interim Housing (DSA 04-116788)					
1. Design Cost					
1.01 Architect					
UNCOMMITTED	\$0	\$0	\$0	\$0	
LPA INC	\$70,000	\$70,000	\$70,000	\$0	100.00%
	\$70,000	\$70,000	\$70,000	\$0	100.00%
2. Construction Cost					
2.01 Construction					
UNCOMMITTED	\$0	\$0	\$0	\$0	
ANGELES CONTRACTOR, INC	\$1,074,556	\$1,074,556	\$1,074,556	\$0	100.00%
	\$1,074,556	\$1,074,556	\$1,074,556	\$0	100.00%
2.02 OFCI and Other Construction					
UNCOMMITTED	\$0	\$0	\$0	\$0	
ACCO ENGINEERED SYSTEMS INC	\$36,527	\$36,527	\$36,527	\$0	100.00%
	\$36,527	\$36,527	\$36,527	\$0	100.00%
4. Construction Support Costs					
4.01 Rental					
UNCOMMITTED	\$1	\$0	\$0	\$0	
ELITE MODULAR LEASING & SALES INC	\$567,326	\$567,326	\$499,726	\$0	88.08%
	\$567,327	\$567,326	\$499,726	\$0	88.08%
4.05 DSA Review Fees					
UNCOMMITTED	\$0	\$0	\$0	\$0	
DIVISION OF STATE ARCHITECT	\$24,163	\$24,163	\$24,163	\$0	100.00%
	\$24,163	\$24,163	\$24,163	\$0	100.00%
4.07 DSA Inspection (IOR)					
UNCOMMITTED	\$0	\$0	\$0	\$0	
BPI INSPECTION SERVICE	\$43,265	\$43,265	\$43,265	\$0	100.00%
	\$43,265	\$43,265	\$43,265	\$0	100.00%
4.08 DSA Construction Phase Testing (LOR)					
UNCOMMITTED	\$0	\$0	\$0	\$0	
NINYO & MOORE	\$41,908	\$41,908	\$41,908	\$0	100.00%
	\$41,908	\$41,908	\$41,908	\$0	100.00%
4.09 Relocation					
UNCOMMITTED	\$0	\$0	\$0	\$0	
Beltmann Group, Inc.	\$4,640	\$4,640	\$4,640	\$0	100.00%
	\$4,640	\$4,640	\$4,640	\$0	100.00%
Total 394-9520 Villa Park HS Interim Housing (DSA 04-116788)	\$1,862,385	\$1,862,385	\$1,794,785	\$0	96.37%



Measure S Bond Program

Financial Report for September 2021

Budget vs Actuals - By School and Budget Category with Vendor Detail

QSS Data thru 9/30/2021

	Budget	Contracted to Date	Expended to Date	Quarterly Expense Jul '21 - Sep '21	% Expended
394-9520 Villa Park HS Parking and Drop Off (DSA 04-118521)					
1. Design Cost					
1.01 Architect					
UNCOMMITTED	\$0	\$0	\$0	\$0	
LPA INC	\$107,305	\$107,305	\$59,506	\$0	55.45%
	\$107,305	\$107,305	\$59,506	\$0	55.45%
2. Construction Cost					
2.01 Construction					
UNCOMMITTED	\$0	\$0	\$0	\$0	
ANGELES CONTRACTOR, INC	\$2,750,000	\$2,750,000	\$2,594,435	\$0	94.34%
	\$2,750,000	\$2,750,000	\$2,594,435	\$0	94.34%
4. Construction Support Costs					
4.05 DSA Review Fees					
UNCOMMITTED	\$4,922	\$0	\$0	\$0	
DIVISION OF STATE ARCHITECT	\$37,762	\$37,762	\$37,762	\$0	100.00%
	\$42,683	\$37,762	\$37,762	\$0	88.47%
4.06 Postage, Printing & Advertising					
UNCOMMITTED	\$0	\$0	\$0	\$0	
AMERICAN REPROGRAPHICS CO LLC	\$476	\$476	\$476	\$0	100.00%
	\$476	\$476	\$476	\$0	100.00%
4.07 DSA Inspection (IOR)					
UNCOMMITTED	\$0	\$0	\$0	\$0	
BPI INSPECTION SERVICE	\$44,880	\$44,880	\$40,264	\$190	89.71%
	\$44,880	\$44,880	\$40,264	\$190	89.71%
4.08 DSA Construction Phase Testing (LOR)					
UNCOMMITTED	\$0	\$0	\$0	\$0	
NINYO & MOORE	\$83,024	\$83,024	\$75,273	\$10,441	90.66%
	\$83,024	\$83,024	\$75,273	\$10,441	90.66%
Total 394-9520 Villa Park HS Parking and Drop Off (DSA 04-118521)	\$3,028,369	\$3,023,447	\$2,807,716	\$10,631	92.71%
394-9520 Villa Park HS Phase II (DSA 04-119694)					
1. Design Cost					
1.01 Architect					
UNCOMMITTED	\$0	\$0	\$0	\$0	
LPA INC	\$1,877,000	\$1,877,000	\$1,179,102	\$243,621	62.82%
	\$1,877,000	\$1,877,000	\$1,179,102	\$243,621	62.82%

3. Program and Construction Management



Measure S Bond Program

Financial Report for September 2021

Budget vs Actuals - By School and Budget Category with Vendor Detail

QSS Data thru 9/30/2021

	Budget	Contracted to Date	Expended to Date	Quarterly Expense Jul '21 - Sep '21	% Expended
3.01 Program Management Fees					
UNCOMMITTED	\$262,181	\$0	\$0	\$0	
CUMMING CONSTRUCTION MGMT INC	\$57,949	\$57,949	\$57,949	\$609	100.00%
	\$320,130	\$57,949	\$57,949	\$609	18.10%
3.02 Construction Management Fees					
UNCOMMITTED	\$17,365	\$0	\$0	\$0	
CORDOBA CORPORATION	\$206,396	\$206,396	\$63,580	\$14,418	30.80%
	\$223,761	\$206,396	\$63,580	\$14,418	28.41%
4. Construction Support Costs					
4.03 Commissioning					
UNCOMMITTED	\$0	\$0	\$0	\$0	
P2S ENGINEERING INC	\$8,429	\$8,429	\$2,310	\$2,310	27.41%
	\$8,429	\$8,429	\$2,310	\$2,310	27.41%
4.05 DSA Review Fees					
UNCOMMITTED	\$0	\$0	\$0	\$0	
DIVISION OF STATE ARCHITECT	\$188,750	\$188,750	\$188,750	\$0	100.00%
	\$188,750	\$188,750	\$188,750	\$0	100.00%
4.06 Postage, Printing & Advertising					
UNCOMMITTED	\$0	\$0	\$0	\$0	
AMERICAN REPROGRAPHICS CO LLC	\$8,000	\$8,000	\$0	\$0	0.00%
	\$8,000	\$8,000	\$0	\$0	0.00%
4.11 Preliminary Testing (Hazmat, Topo, Geo, etc)					
UNCOMMITTED	\$1,657	\$0	\$0	\$0	
ENVIRONMENTAL NETWORK CORPORATION	\$10,860	\$10,860	\$4,640	\$0	42.73%
NINYO & MOORE	\$58,576	\$58,576	\$53,223	\$28,576	90.86%
PSOMAS	\$26,550	\$26,550	\$26,550	\$0	100.00%
	\$97,643	\$95,986	\$84,413	\$28,576	86.45%
Total 394-9520 Villa Park HS Phase II (DSA 04-119694)	\$2,723,713	\$2,442,510	\$1,576,104	\$289,533	57.87%
394-TBD Villa Park HS Science Center Unallocated Funds F22					
5. Unallocated Bond Funds					
5.04 Unallocated Bond Funds					
UNCOMMITTED	\$1,192,646	\$0	\$0	\$0	
	\$1,192,646	\$0	\$0	\$0	0.00%
Total 394-TBD Villa Park HS Science Center Unallocated Funds F22	\$1,192,646	\$0	\$0	\$0	0.00%
394-9520 Villa Park Unallocated Funds F21					
4. Construction Support Costs					



Measure S Bond Program

Financial Report for September 2021

Budget vs Actuals - By School and Budget Category with Vendor Detail

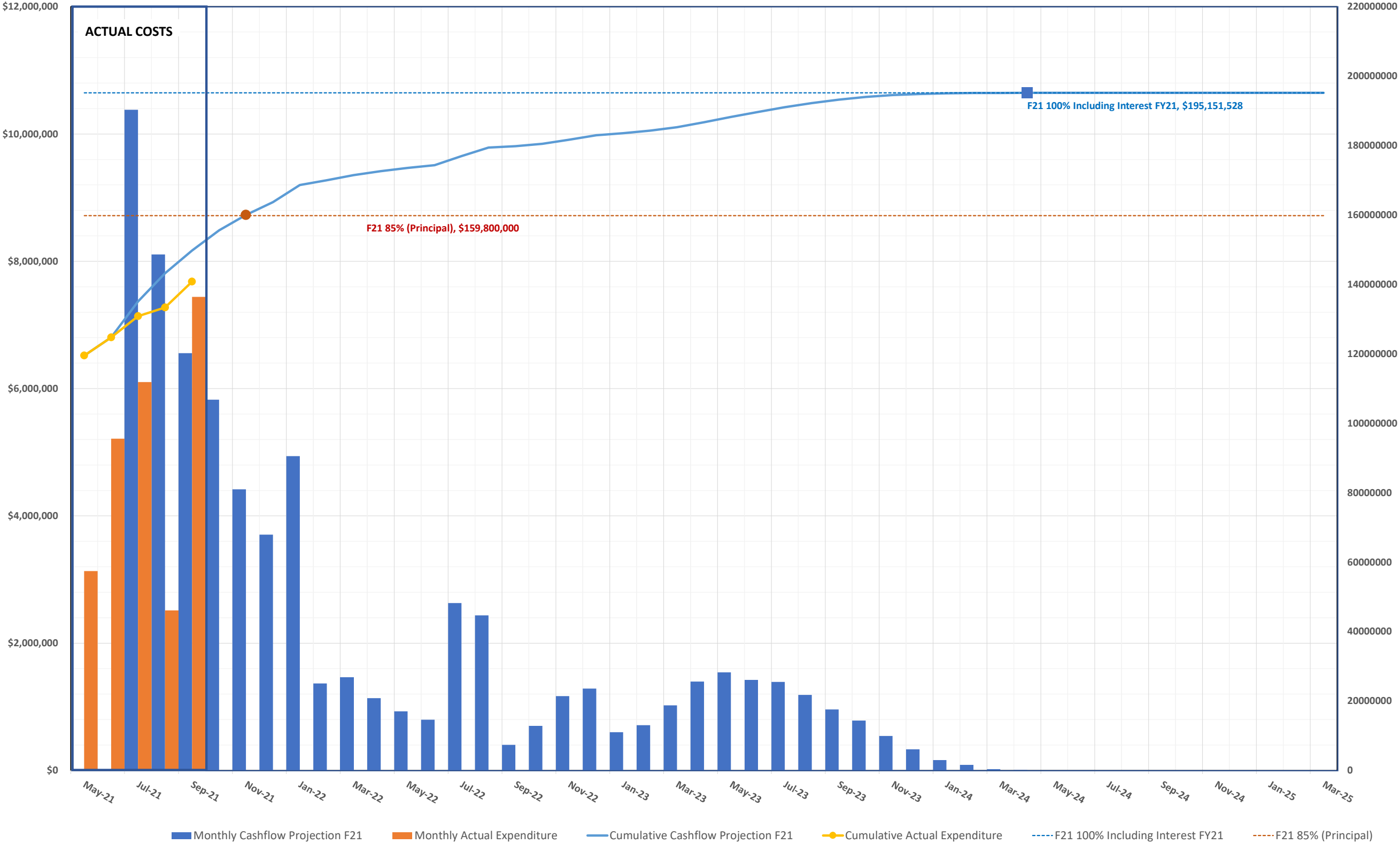
QSS Data thru 9/30/2021

	Budget	Contracted to Date	Expended to Date	Quarterly Expense Jul '21 - Sep '21	% Expended
4.15 Miscellaneous Fees					
UNCOMMITTED	\$0	\$0	\$0	\$0	
OUSD COST OF INTEREST DISTRIBUTION	\$20,426	\$20,426	\$20,426	\$0	100.00%
	\$20,426	\$20,426	\$20,426	\$0	100.00%
5. Program Reserve					
5.03 Interest Earned - Reserve					
UNCOMMITTED	\$0	\$0	\$0	\$0	
	\$0	\$0	\$0	\$0	
Total 394-9520 Villa Park Unallocated Funds F21	\$20,426	\$20,426	\$20,426	\$0	100.00%
394-TBD Villa Park Unallocated Funds F22					
5. Unallocated Bond Funds					
5.04 Unallocated Bond Funds					
UNCOMMITTED	\$25,538,287	\$0	\$0	\$0	
	\$25,538,287	\$0	\$0	\$0	0.00%
Total 394-TBD Villa Park Unallocated Funds F22	\$25,538,287	\$0	\$0	\$0	0.00%
Villa Park High School	\$72,698,662	\$35,937,815	\$28,424,397	\$5,021,739	39.10%

3.2 CASH FLOW PROJECTIONS



MEASURE S BOND PROGRAM - Series A 2018 CASH FLOW PROJECTION (Phase I and II)
Actual Costs thru September 30, 2021, *NOT INCLUDING ACCRUALS PENDING PAYMENT*
Fund 21 Planned Costs Projected as of June 30, 2021

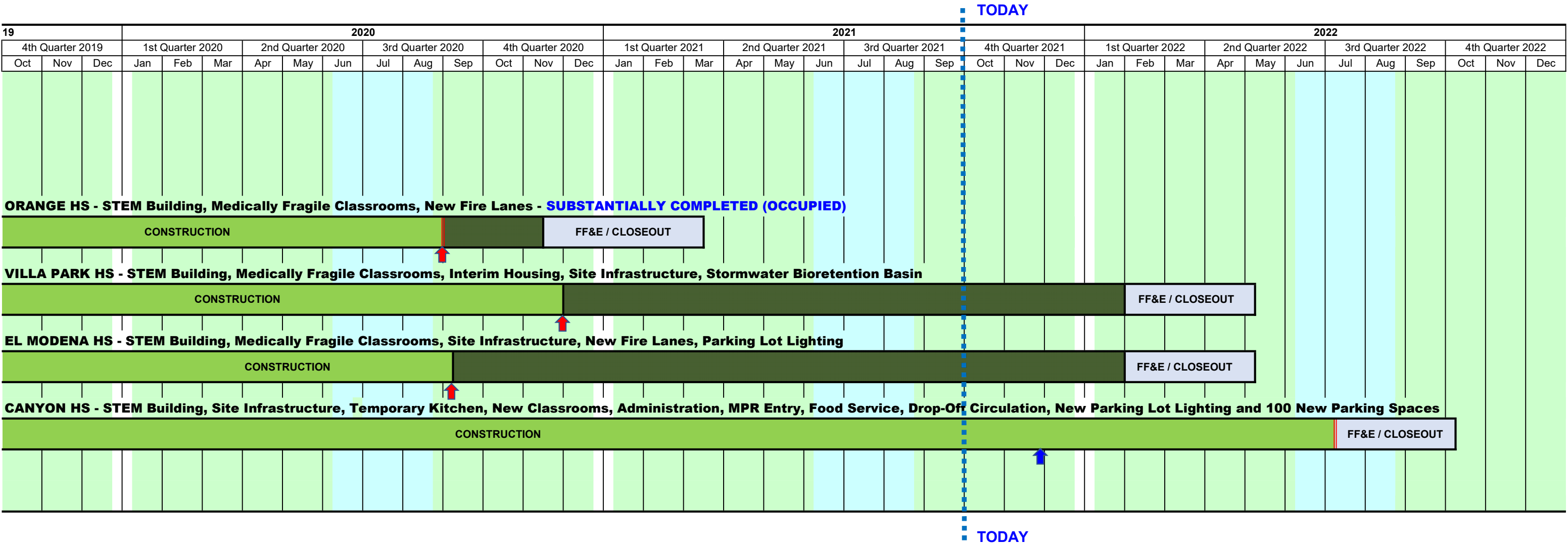


2016			2017												2018									2019									20		
4th Quarter 2016			1st Quarter 2017			2nd Quarter 2017			3rd Quarter 2017			4th Quarter 2017			1st Quarter 2018			2nd Quarter 2018			3rd Quarter 2018			4th Quarter 2018			1st Quarter 2019			2nd Quarter 2019			3rd Quarter 2019		
Oct	Nov	Dec	Jan	Feb	Mar	Apr	May	Jun	Jul	Aug	Sep	Oct	Nov	Dec	Jan	Feb	Mar	Apr	May	Jun	Jul	Aug	Sep	Oct	Nov	Dec	Jan	Feb	Mar	Apr	May	Jun	Jul	Aug	Sep
			BOND SALE SERIES A - \$188M																																
			ORANGE HS - Site Infrastructure, Move Relocatable Buildings, Bus Drop-Off, Restroom Renovation & Satellite Kitchen - COMPLETED																																
			PROGRAM PHASE			DESIGN PHASE						DSA REVIEW & APPROVAL						BID & AWARD			INFRASTRUCTURE						SATELLITE KITCHEN CONSTRUCTION			FF&E/CLOSEOUT					
			ORANGE HS - STEM Building, Medically Fragile Classrooms, New Fire Lanes - SUBSTANTIALLY COMPLETED (OCCUPIED)																																
			PROGRAM PHASE			DESIGN PHASE									DSA REVIEW & APPROVAL						BID & AWARD						CONSTRUCTION								
			VILLA PARK HS - STEM Building, Medically Fragile Classrooms, Interim Housing, Site Infrastructure, Stormwater Bioretention Basin																																
			PROGRAM PHASE			DESIGN PHASE									DSA REVIEW & APPROVAL						BID & AWARD						CONSTRUCTION								
			EL MODENA HS - STEM Building, Medically Fragile Classrooms, Site Infrastructure, New Fire Lanes, Parking Lot Lighting																																
			PROGRAM PHASE			DESIGN PHASE									DSA REVIEW & APPROVAL						BID & AWARD						CONSTRUCTION								
			CANYON HS - STEM Building, Site Infrastructure, Temporary Kitchen, New Classrooms, Administration, MPR Entry, Food Service, Drop-Off Circulation,																																
PROGRAM PHASE			DESIGN PHASE															DSA REVIEW & APPROVAL						BID & AWARD											

Page 42



MEASURE S BOND PROGRAM - PHASE I: SCHEDULE SUMMARY





MEASURE S BOND PROGRAM - PHASE II: SCHEDULE SUMMARY

2018							2019												2020											
3rd Quarter 2018				4th Quarter 2018			1st Quarter 2019			2nd Quarter 2019			3rd Quarter 2019			4th Quarter 2019			1st Quarter 2020			2nd Quarter 2020			3rd Quarter 2020			4th Quarter 2020		
Jun	Jul	Aug	Sep	Oct	Nov	Dec	Jan	Feb	Mar	Apr	May	Jun	Jul	Aug	Sep	Oct	Nov	Dec	Jan	Feb	Mar	Apr	May	Jun	Jul	Aug	Sep	Oct	Nov	Dec



SUMMER BREAK

Conceptual Design Board Approved 5/9/19 for Canyon HS

Conceptual Design Board Approved 12/13/18

Phase II Design & Budget Board Approved 7/25/19

Orange HS

Orange HS

El Modena HS

El Modena HS

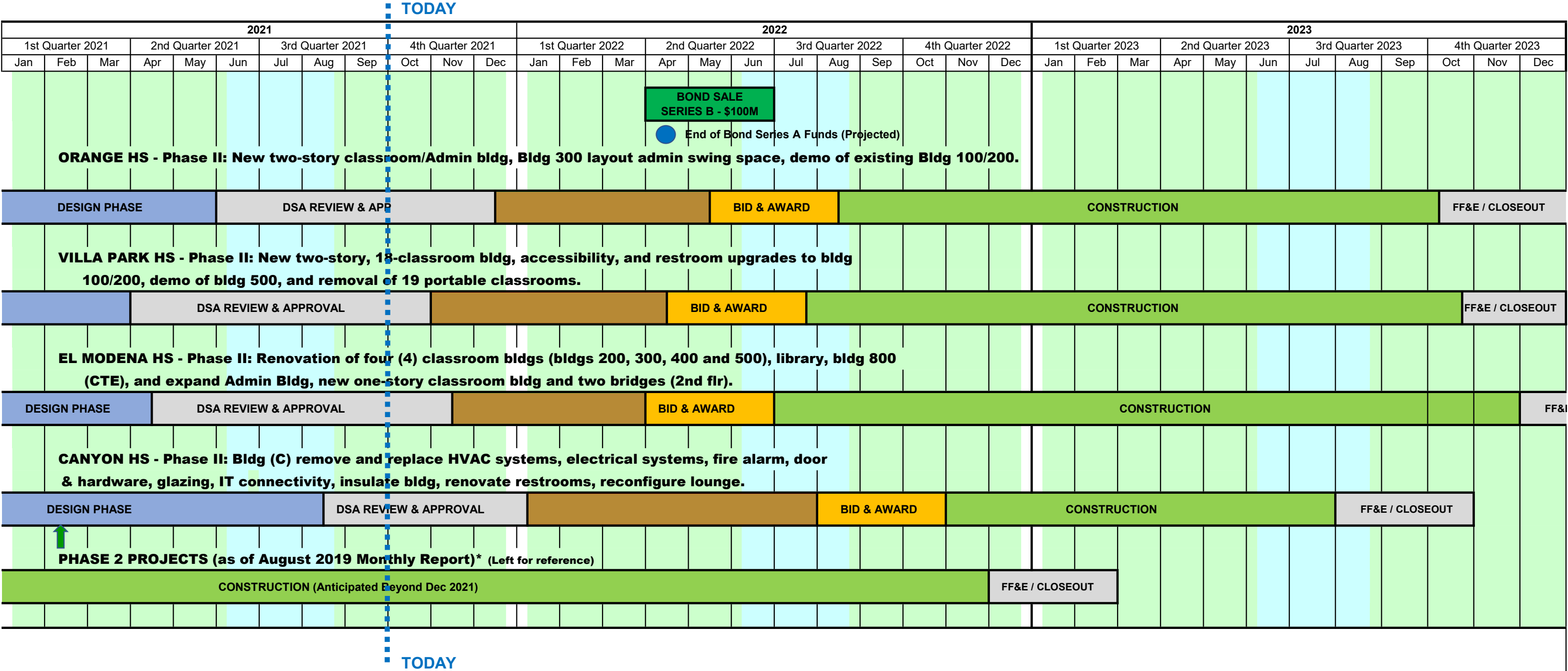
Villa Park HS

Villa Park HS

Canyon HS



MEASURE S BOND PROGRAM - PHASE II: SCHEDULE SUMMARY



- SUMMER BREAK
- EXTENDED CONSTRUCTION START
(for Phase II Bond Award)

- Phase II Design Document & Construction Estimate Board Approval (Completed)
- Orange HS - November 19, 2020 Board Meeting
- El Modena HS - October 15, 2020 Board Meeting
- Villa Park HS - August 13, 2020 Board Meeting
- Canyon HS - February 11, 2021 Board Meeting

Board of Education

Kathryn A. Moffat, President
Andrea Yamasaki, Vice-President
Kris Erickson, Clerk
Rick Ledesma
John Ortega
Ana Page
Angie Schlueter-Rumsey

Gunn Marie Hansen, Ph.D.
Superintendent

David A. Rivera
**Assistant Superintendent/CBO
Business Services**

Scott Harvey
**Senior Executive Director
Administrative Services**



Facilities & Planning Department
Measure S Bond Program
726 W. Collins Avenue
Orange, CA 92867
T: (714) 628-4500