



No cell phone use in this area

School News



Orange Unified
EDGE
INTEGRITY • EQUITY • RESPECT • EXCELLENCE
RE-IMAGINING SCHOOLS 2020-2021

Orange Unified School District

Kids Mask

Protective and Comfortable with Earloops

- ✓ Protective against dust, germs and other harmful particles
- ✓ Form fitting design for smaller faces
- ✓ Comfortable Earloops for long wear
- ✓ Perfect for ages 4-12 with adult supervision



Made in China

Box of 30 pcs

Kids Mask

Orange Unified School District Reimagining Schools 2020-21



REIMAGINING SCHOOLS & FACILITY REOPENING PLANS 2020-21

RESOURCES

CALIFORNIA DEPARTMENT OF EDUCATION (CDE) GUIDELINES FOR REOPENING SCHOOLS (June 8, 2020)

<https://www.cde.ca.gov/ls/he/hn/documents/strongertogether.pdf>

CALIFORNIA DEPARTMENT OF EDUCATION (CDE) SCHOOL REOPENING RESOURCES: COVID-19

<https://www.cde.ca.gov/ls/he/hn/strongertogether.asp>

CENTER FOR DISEASE CONTROL (CDC) GUIDELINES FOR SCHOOLS: COVID-19

<https://www.cdc.gov/coronavirus/2019-ncov/community/schools-childcare/schools.html>

ORANGE COUNTY HEALTH DEPARTMENT COVID-19 RESOURCES

<https://occovid19.ochealthinfo.com/>

CALIFORNIA OCCUPATIONAL SAFETY AND HEALTH SERVICES DEPARTMENT COVID-19 RESOURCES

<https://www.dir.ca.gov/dosh/coronavirus/Health-Care-General-Industry.html>

CALIFORNIA DEPARTMENT OF PUBLIC HEALTH (CDPH) COVID-19 INDUSTRY GUIDANCE

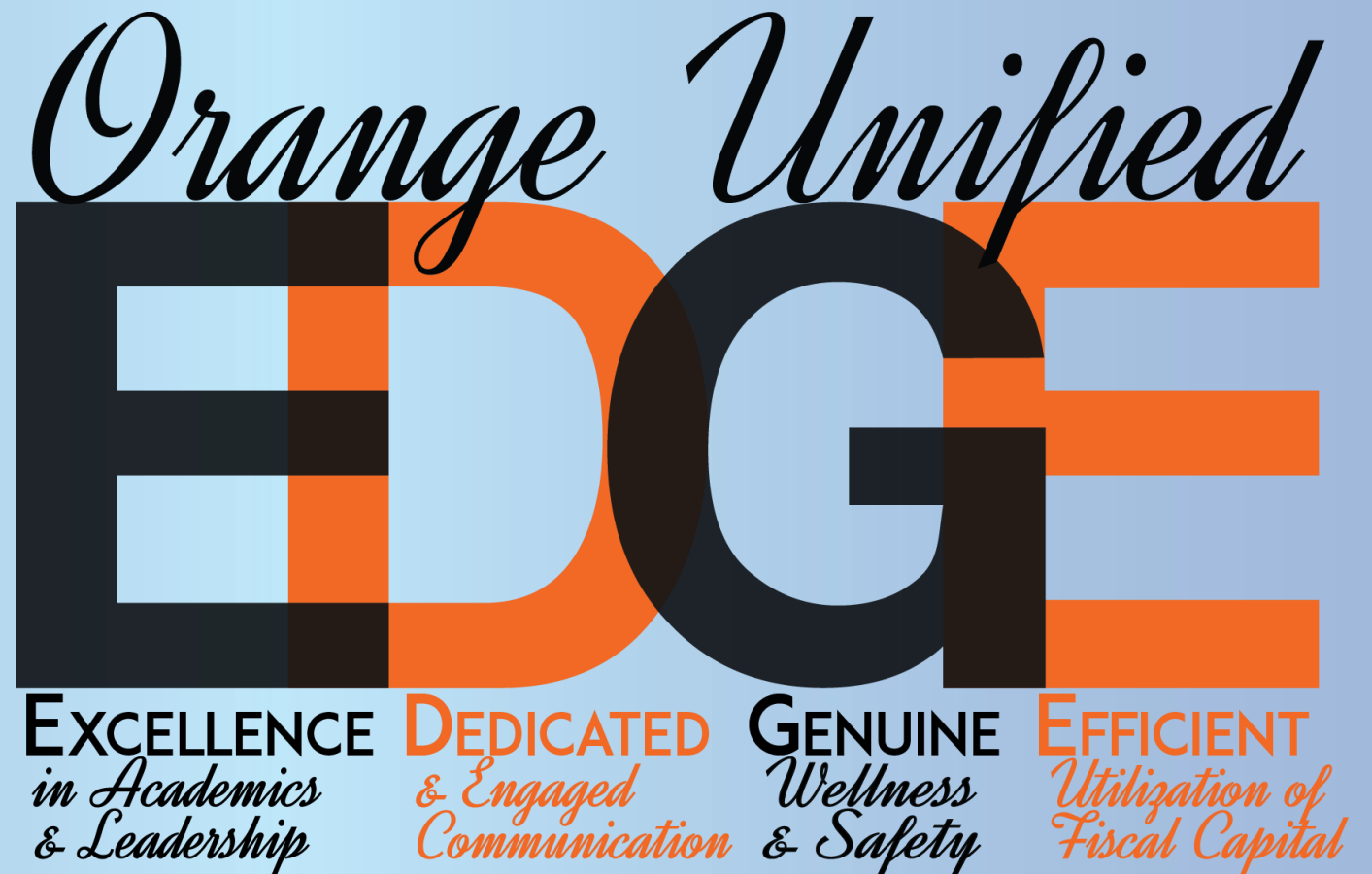
<https://covid19.ca.gov/pdf/guidance-schools.pdf>

CDE Coronavirus Resources

<https://www.cde.ca.gov/ls/he/hn/coronavirusadtinfo.asp>



The OUSD Strategic Plan Focus Areas – Aligning Our Work





REIMAGINING SCHOOLS & FACILITY REOPENING PLANS 2020-21

The plan to reimagine schools and reopen facilities to students is made using the Strategic Plan Focus Areas and Core Values as guides, combined with the data that we were able to collect from our families.

Our Foundation: Core Values

- ❖ **Integrity** - We embrace a culture of ethical and transparent decision making and actions.
- ❖ **Equity** - We promote inclusive and culturally relevant environments by supporting the social-emotional and intellectual needs of all.
- ❖ **Respect** - We advocate for strong, compassionate relationships that appreciate the unique qualities of our diverse community.
- ❖ **Excellence** - We strive for the highest standards in all endeavors by deliberately pursuing continuous growth and innovation.



REIMAGINING SCHOOLS & FACILITY REOPENING PLANS 2020-21

The **Reimagining Schools Task Force** includes teachers, administrators, mental health professionals, and other certificated and classified staff who have been researching numerous instructional models for elementary and secondary classrooms. Models are being analyzed based on the following criteria:

- ❖ Aligned with our OUSD Core Values of *Integrity, Equity, Respect & Excellence*
- ❖ Aligned with the OUSD EDGE Four Focus Areas: *Excellence in Academics & Leadership, Dedicated & Engaged Communication, Genuine Wellness & Safety, and Efficient Utilization of Fiscal Capital*
- ❖ Grounded in culturally relevant research that focuses on teaching and learning
- ❖ Equity for all students with an emphasis on our English Learners, Students with Disabilities, and our Homeless/Foster Youth
- ❖ Intervention and support plans
- ❖ Classroom configuration options that maximize the health and safety of our students and staff
- ❖ Informed data gathered from stakeholder surveys



REIMAGINING SCHOOLS & FACILITY REOPENING PLANS 2020-21

Reimagining Schools Task Force Members

- ❖ Karin Barone, La Veta Elementary School
- ❖ Robyn Longordo, Jordan Academy of Language and Computer Science, TK
- ❖ Jessica Nibarger, El Rancho Charter Middle School
- ❖ Scott Clark, Portola Middle School
- ❖ Crystal Meyer, Villa Park High School
- ❖ Joyce McMurray, Villa Park High School Nurse
- ❖ Lauren Pullin, Counselor, Crescent Elementary and Serrano Elementary
- ❖ Anita Olson, School Psychologist, Richland High School and Fairhaven Elementary
- ❖ Jill Bonk, Library Media Specialist, Yorba Middle School
- ❖ Sally Hughson, Principal, Prospect Elementary
- ❖ John Albert, Principal, California Elementary
- ❖ Renee Ybarra, Principal, Sycamore Elementary
- ❖ Mark McLaughlin, Principal, Running Springs Elementary
- ❖ Nicole VanWilgen Moore, Principal, Anaheim Hills Elementary
- ❖ Lisa Ogan, Principal, Cerro Villa Middle School
- ❖ Gregory Smith, Assistant Principal, Canyon High School
- ❖ Thomas Fox, Assistant Principal, Villa Park High School
- ❖ Joe Erven, Principal McPherson Magnet and Executive Director Innovation and Excellence
- ❖ Elena Rodriguez, Executive Director Accountability and Equity
- ❖ Christina Lin, Executive Director Technology and Student Achievement
- ❖ Ed Howard, Executive Director Student and Community Services
- ❖ Sue Singh, Executive Director Special Education
- ❖ Andrew Durrett, Energy Manager
- ❖ John Eratt, Coordinator Special Education
- ❖ Kassy Makena, Coordinator Inclusion
- ❖ Randy Kolset, Coordinator Education Technology
- ❖ Amber Tatch, Coordinator English Learners
- ❖ Raeanne Little, Coordinator Induction
- ❖ Andrew Granite, Coordinator Special Education
- ❖ Erin Rosselli, Coordinator Assessment
- ❖ Kristine Nelson, Coordinator Foster Youth and McKinney-Vento
- ❖ Elizabeth Gutierrez, School Office Manager, Anaheim Hills Elementary
- ❖ David Lane, Information Technology Manager User Support



OUSD EDGE SLICE

Reimagining Schools

Student-Centered

Live Instruction

Innovative Learning

Culturally Inclusive

Equitable Choices



2020-2021 OUSD Instructional Models

The Orange Unified School District is prepared to pivot between the following instructional plans for the 2020-2021 school year. Orange Unified will determine the level for all students based on local, state and county health departments guidance. Parents will have the choice of 100% virtual options.

Phase 1

100% Virtual Learning

All students engaged in daily synchronous online instruction with teachers.

4 SLICE Block (middle)

3 SLICE Block (high)

Per Governor's mandate, until Orange County is off the monitoring list and has a decline in COVID-19 cases for 14 days or as mandated by local health officials

Phase 2: Modified In-Person Instruction

ELEMENTARY (TK-6):

SLICE allows families to pick from 3 options

- Full Day at school with class sizes reduced by half through collaboration with paraeducator or instructional staff.
- Blended Model (AM or PM choice) in the classroom with student completing assigned work virtually
- 100% Virtual Option: Taught by teachers at your elementary school (exact schedule to be released)

SECONDARY (6-12):

SLICE allows families to pick from 2 options

- Full Day at school with social distancing. Number of days in classroom depends on student requests (could be 2-5 days)
- Continue blocks through end of trimester (MS) and semester (HS)
- Students can change models between quarters to allow for flexibility
- 100% Virtual Option retaining enrollment status at your Secondary Site

- Students with disabilities and English Learners will have access to and be supported in any of the OUSD Instructional models adopted by the District
- Regionalized special education programs will operate on a traditional model
- Related services for special education will be provided in person/virtually to the fullest extent possible

Phase 3

Normal Operations Resume

Used if the state of California moves to Stage 4 and the Orange County Healthcare Agency states that conditions support in seat instruction without the need for social distancing

S-Student Centered
L-Live Instruction
I-Innovative Learning
C-Culturally Inclusive
E-Equitable Choices

100% Virtual Learning Option

- Students can choose the **Secondary Edge Virtual Academy** for virtual learning option
- Specialized curriculum designed specifically for virtual learning
- Classes taught by Orange Unified School District Teachers



SB 98 – Minimum Instructional Minutes

- 180 instructional minutes in kindergarten.
- 230 instructional minutes in grades 1 to 3.
- 240 instructional minutes in grades 4 to 12.



For a combined day of instruction delivered through both in-person instruction and distance learning, time scheduled under the immediate supervision of an employee of the local educational agency who possesses a valid certification document can be combined with assignments made under the general supervision of an employee of the local educational agency who possesses a valid certification document as registered by law to meet the equivalent of a minimum day of instruction.

- Students with disabilities and English Learners will have access to and be supported in any of the OUSD instructional models adopted by the District
- Regionalized special education programs will operate on a traditional schedule when we return to in-person instruction
- Related services for special education will be provided in person/virtually to the fullest extent possible



Elementary Instructional Models

Phase 1: 100% Distance Learning

- All students engaged in daily synchronous online instruction with teachers.
- Per Governor's mandate, until Orange County is off the monitoring list and has a decline in COVID-19 cases for 14 days or as mandated by local health officials.

Phase 2: Modified In-Person Instruction

SLICE allows families to pick from one of three options

- Full Day at school with safety precautions
- Blended Model - Half Day in person instruction with teacher (AM or PM choice) and student completes assigned work virtually from home
- 100% Distance Learning Option: Taught by teachers at your elementary school (exact schedule to be released)

Phase 3: Normal Operations Resume

Used if the state of California moves to Stage 4 and the Orange County Healthcare Agency states that conditions support in seat instruction without the need for social distancing

Distance Learning Elementary Example Schedule

Scheduled Content	Times
Schedule Review / Warmup Activities	8:10-8:20 am
ELA	8:20-9:20 am
Break	9:20-9:30 am
Math	9:30-10:30 am
Break	10:30-10:40 am
Science, STEM, Social Science, PE, VAPA	10:40-11:40 am
Lunch	11:40-12:20 pm
Collaborative Learning	12:20-1:10 pm
Structured Office Hours/Teacher Planning/Professional Development	1:10-2:10 pm



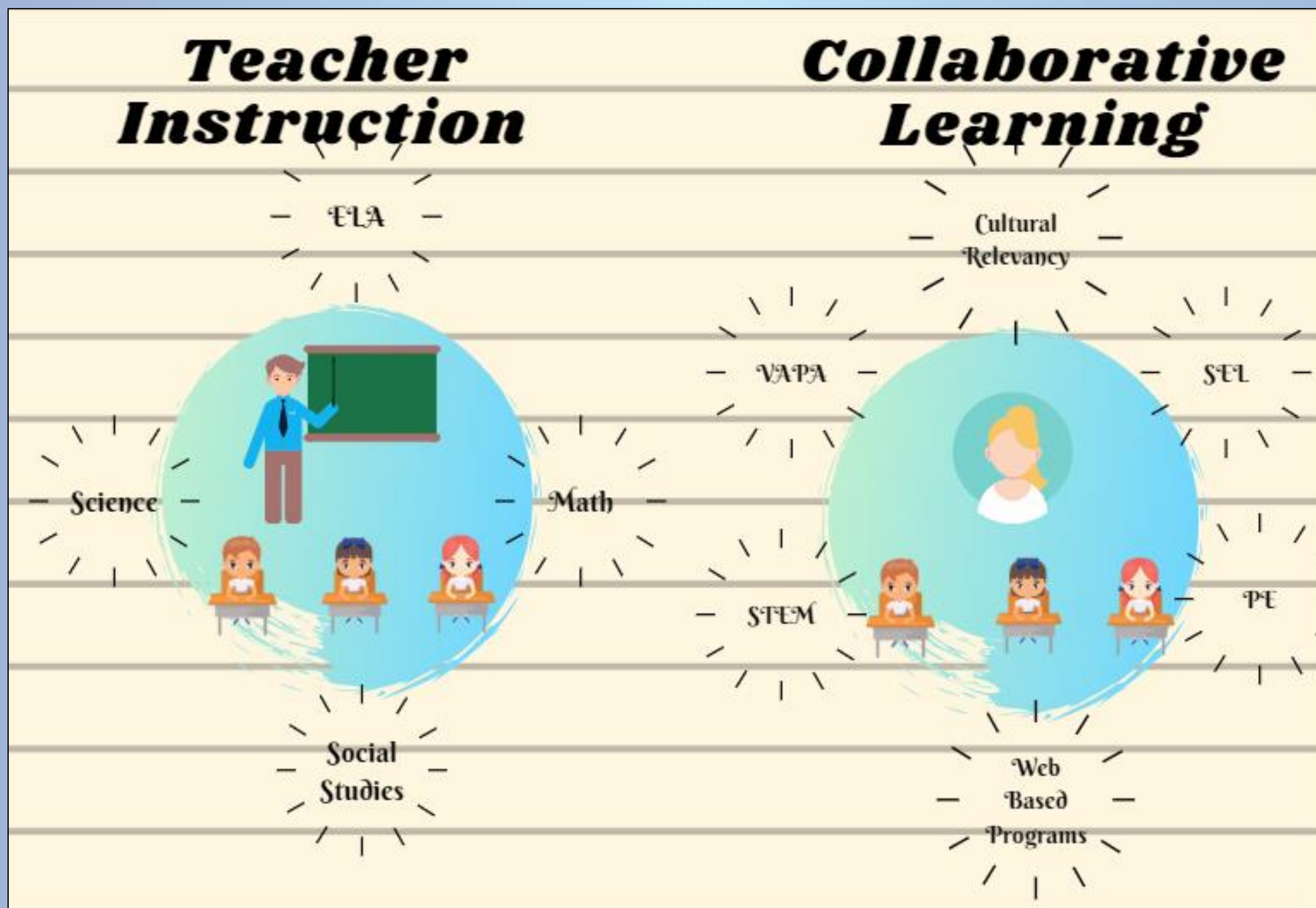
Elementary Model for In-Person Instruction Sample Student Schedule (Phase 2)

Mon/Tues/Th/Fri	TK-6 AM Cohort
Teacher Instructional time (ELA, Math, Science, Social Studies)	8:10-9:40
Recess	9:40-9:55
Teacher Instructional time (ELA, Math, Science, Social Studies)	9:55-10:55
Collaborative Learning (STEM, PE, VAPA)	10:55-11:30
Lunch	11:30-12:10
Collaborative Learning (STEM, PE, VAPA)	12:10-2:30



REIMAGINING SCHOOLS & FACILITY REOPENING PLANS 2020-21

Elementary Instructional Model for In-Person Instruction





Middle School Instructional Model

MS Example Schedule

1. English
2. Math 1
3. PE
4. Spanish 1B
5. US History
6. Int Science 8
7. CTE

First Trimester Half, Early October

MS Student Trimester 1 (1st Half) Schedule

1. English
2. Math 1
3. PE
4. Spanish 1B

First Trimester Second Half, Late November

MS Student Trimester 1 (2nd Half) Schedule

1. English
5. US History
6. Integrated Science
7. CTE Course

- Students will take 4 classes Trimester 1 (First Half) and 4 classes Trimester 1 (Second Half)
- Students will earn 1 Trimester of credit for each class taken in the grading period (first half and second half)
- This schedule allows schools to return to a traditional schedule at the end of the trimester
- The Middle School SLICE Schedule benefits include students focusing on less course work. Teachers can also focus on building out course work for a smaller number of classes (4 classes at a time) to go online/virtual to start. **This will create more live teaching opportunities virtually.**
- Since virtual education is necessary, teachers will follow their class schedules instead of schoolwide subject-based class schedule.



Middle School Example Schedule Phase 1 and 2; Four SLICE Block

Time	Trimester 1 (First Half) Through Early October	Trimester 1 (Second Half) Through Mid November
8:15-8:50	Period 1	
9:05-10:15	Period 2	Period 5
10:30-11:40	Period 3	Period 6
11:40-12:20	Lunch	Lunch
12:20-1:30	Period 4	Period 7
1:30-2:30	Structured Office Hours/Teacher Planning/Professional Development	



Middle School Instructional Model for In-Person Instruction; Phase 2

Time	Trimester 1 (First Half) Through Early October		Trimester 2 (Second Half) Through Mid November	
8:15-8:50	Period 1			
8:55-10:05	Period 2		Period 5	
10:05-11:55	10:05-10:40 Lunch A (6th and 7th Graders)	10:10-11:20 Period 3	10:05-10:40 Lunch A (6th and 7th Graders)	10:10-11:20 Period 6
	10:40-11:50 Period 3	11:20-11:55 Lunch B (8th Graders)	10:40-11:50 Period 6	11:20-11:55 Lunch B (8th Graders)
11:55-1:05	Period 4		Period 7	
1:05-2:05	Structured Office Hours/Teacher Planning/Professional Development			

- The **number of days** students will be instructed within the classroom will be dependent on families who pick 100% virtual education, possibility of live streaming and social distancing guidelines from the CDC and State Government (2-5 days of in seat instruction).
- If we offer 5 days of in-seat instruction per week, we will build out the middle school online course offerings
- Students can change models between trimesters – to allow for flexibility of enrollment



High School Instructional Model

HS Example Schedule

1. Math 1
2. PE
3. Spanish 2
4. Biology
5. CTE
6. English 9

Quarter 1

HS Student Quarter 1 Schedule

1. Math 1
3. Spanish 2
5. CTE

Quarter 2

HS Student Quarter 2 Schedule

2. PE
4. Biology
6. English 9

- Students will take 3 classes Quarter 1 and 3 classes Quarter 2
- Students will earn 1 Semester of credit for each class taken in each Quarter
- This schedule allows schools to return to a traditional schedule at the end of the semester (January)
- The High School SLICE Schedule benefits include students focusing on less course work. Teachers can also focus on building out course work for a smaller number of classes (3 classes at a time) to go online/virtual to start. This will create more live teaching opportunities virtually.
- Since virtual education is necessary, teachers will follow their class schedules instead of schoolwide subject-based class schedule.
- Zero period will remain an option for high school scheduling.



High School Example Schedule Phase 1 and 2; 3 SLICE Block

Time	Quarter 1	Quarter 2
7:55-8:35	Zero Period (Meets Daily) *	
8:45-10:05	Period 1	Period 2
10:15-11:35	Period 3	Period 4
11:35-12:05	Lunch	Lunch
12:15-1:35	Period 5	Period 6
1:35-2:35	Structured Office Hours/Teacher Planning/Professional Development	
2:35 and beyond	Club Meetings once per week (as prearranged by teacher)	

* For students that take a zero period, their daily minutes equal 200. They are required to complete 40 additional minutes of teacher assignments via Google Classroom



High School Instructional Model for In-Person Instruction; Phase 2

Time	Quarter 1		Quarter 2	
8:00-8:40	Zero Period		Zero Period	
8:45-10:05	Period 1		Period 2	
10:05-12:10	10:05-10:45 Lunch A (9th and 10th Graders)	10:10-11:30 Period 3	10:05-10:45 Lunch A (9th and 10th Graders)	10:10-11:30 Period 5
	10:50-12:10 Period 3	11:30-12:10 Lunch B (11th and 12th Graders)	10:50-12:10 Period 5	11:30-12:10 Lunch B (11th and 12th Graders)
12:15-1:35	Period 5		Period 6	
1:35-2:35	Structured Office Hours/Teacher Planning/Professional Development			

- The **number of days** students will be instructed within the classroom will be dependent on families who pick 100% virtual education, possibility of live streaming and social distancing guidelines from the CDC and State Government (2-5 days of in seat instruction).
- If we offer 5 days of in-seat instruction per week, we will build out the high school online course offerings
- Students can change models between semesters – to allow for flexibility of enrollment

* For students that take a zero period, their daily minutes equal 200. They are required to complete 40 additional minutes of teacher assignments via Google Classroom

High School Sports CIF Calendar and Clubs

2020-21 CIF Sports Calendar
as of July 20, 2020

Sport	Last Day for Section Playoffs	*Last Day for Regional/State Championships
FALL		
Volleyball (Boys & Girls)	March 13, 2021	March 20, 2021
Water Polo (Boys & Girls)	March 13, 2021	March 20, 2021
Cross Country	March 20, 2021	March 27, 2021
Trad. Competitive Cheer	Determined by Section	April 17, 2021
Football	April 10, 2021	April 17, 2021
Field Hockey	Determined by Section	**
Gymnastics	Determined by Section	**
Skiing & Snowboarding	Determined by Section	**
SPRING		
Badminton	May 22, 2021	May 29, 2021
Soccer	May 29, 2021	June 5, 2021
Swimming & Diving	May 29, 2021	June 5, 2021
Tennis (Boys & Girls)	May 29, 2021	June 5, 2021
Wrestling	June 5, 2021	June 12, 2021
Basketball	June 12, 2021	June 19, 2021
Golf (Boys & Girls)	June 12, 2021	June 23, 2021
Baseball	June 19, 2021	June 26, 2021
Softball	June 19, 2021	June 26, 2021
Track & Field	June 19, 2021	June 26, 2021
^Competitive Sport Cheer	Determined by Section	**
Lacrosse	Determined by Section	**



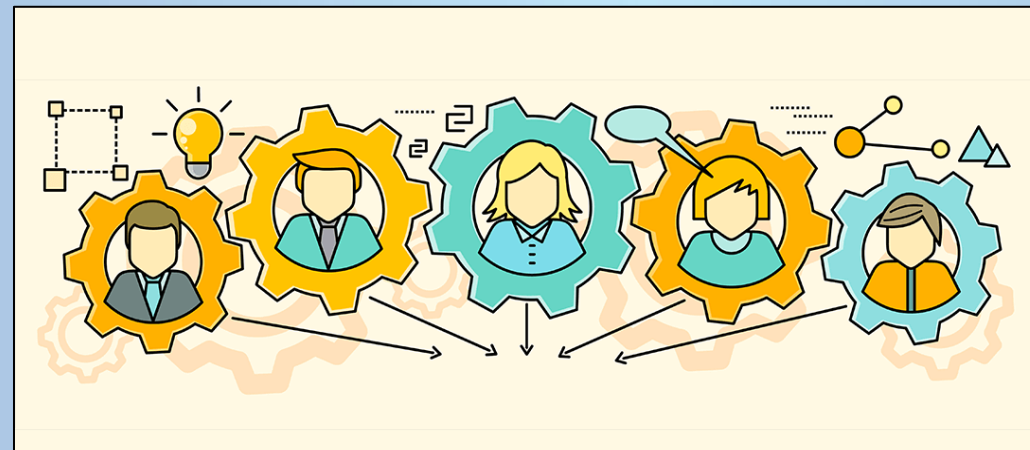
Sports and Clubs will continue to meet virtually with coaches developing individualized training plans for preparation of the fall and spring CIF Sports Calendar.



REIMAGINING SCHOOLS & FACILITY REOPENING PLANS 2020-21

Next Steps

Parents will receive information from their school site requesting their PREFERRED model. This data will be gathered in order to build out classes and schedules should we be directed to open school within the first couple of weeks (we will collect information later in the school year if we continue to be virtual for an extended period of time).



Middle and Elementary School families will receive this communication from their school starting the week of July 27, 2020

High School families will receive this communication from their school on Friday, July 24, 2020



REIMAGINING SCHOOLS & FACILITY REOPENING PLANS 2020-21

We are aware that there will be families who are not comfortable returning to school under any of the above-noted models. For these families, the following personalized options will be available all year:

- ❖ [K-12 Homeschooling through Parkside Education Center](#): Homeschool opportunity where parents serve as the instructor with support from an OUSD teacher who sets up learning schedules with virtual and in-school opportunities provided weekly or monthly
- ❖ [7-12 Independent Study](#): Independent study opportunity providing the flexibility of instruction guided by OUSD teachers and supported with daily, weekly, or monthly check-ins virtually or in-person
- ❖ [Secondary OUSD EDGE Virtual Academy](#): New online learning opportunity with virtual and in-class weekly meetings with credentialed teachers for middle and high school students.





REIMAGINING SCHOOLS & FACILITY REOPENING PLANS 2020-21

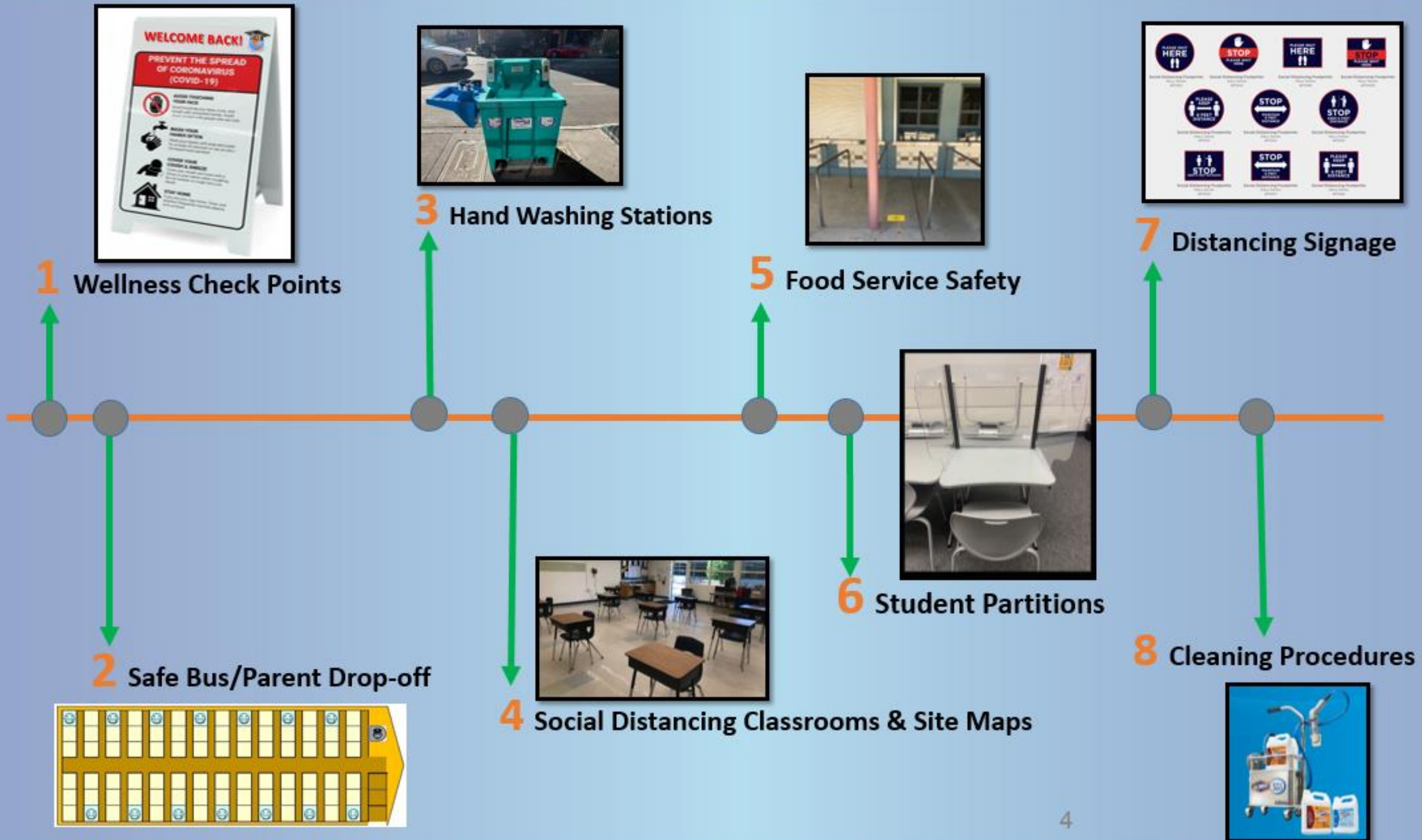
Teacher Support

Topic	Content to Address
<p>Pre-Contract Professional Development</p> <p>August 3-7, 2020</p> <p>Teachers receive hourly rate to attend virtually</p>	<p>Teacher Workshop, Lesson Online, Coaching Overview: Alignment and Calibration, Identifying targets (standards), Calibrating target standards by grade level (content), Aligning learning objectives.</p> <p>Lesson Online: Teachers role when placing students on computer, Guidelines for reviewing online content, Using online learning to enhance (not replace) teaching, Vetting online resources, video clips, etc.</p> <p>Teacher Workshop: Planning robust lessons, Using weekly planning templates, Unit outline template</p> <p>Coaching: How to provide additional support to students, Teacher's role</p> <p>Teacher Collaboration: Importance of collaboration for alignment and calibration, Unit Planning Template, Weekly Planning Templates.</p>
Online Pedagogy	Pacing, Engagement, Clear objectives, Student interaction & activities, Strategies and scaffolds to support all learners (SPED/ELL) Critical Thinking, Learning Outcome, Differentiated support enrichment and small groups
Instructional Structure	Clear and Manageable, Predictable, Flexibility Time, Backward planning for the pacing of standards and objectives over time, Communication with students and parents (virtual "Back to School Night", office hours)
Assessment and Feedback	Formal (prioritizing-more important if primarily remote), Informal/embedded Alternative Assessments, Multiple ways to give feedback regularly
Asynchronous Instruction	Review of Pedagogy in an Asynchronous context, Resources and Tools (Screencastify), Examples, Try to do one on your own!
Synchronous Instruction	Review of Pedagogy, Creating interest- hook, Setting student expectations- share with parents, Tips & tools for live lessons Effective Visuals, Plan B- for troubleshooting, Sample mock live-streaming lessons
Social-Emotional Learning and Support	Link to the district/school plan, Greeting students Social interaction for students - Morning Meeting, digital recess Examples of what is already being done in your classroom - how to bring that to remote learning Mindfulness, Brain Breaks, Resources - by school level remotely Will be in online videos that can be utilized in person or remotely
Live instruction with remote participation	Tech tools and strategies, Setting Expectations Structuring the lesson for effective participation both live and remotely (visuals, response, and sharing protocols, guided practice)



REIMAGINING SCHOOLS & FACILITY REOPENING PLANS 2020-21

Eight Steps to Protecting Our Staff and Students





REIMAGINING SCHOOLS & FACILITY REOPENING PLANS 2020-21

CDC/CDE
Guideline:

Campus Access. Develop a plan to minimize access to campus, and limit nonessential visitors, facility use permits, and volunteers.

1 Wellness Checkpoints

❖ Students—Entering Campuses

- Passive Screening. OUSD Parents will be expected to screen students before leaving for school (check temperature to ensure temperatures below 100.4 degrees Fahrenheit).
- Active Screening. OUSD will perform visual wellness checks and will check temperatures with no-touch thermometers as needed. OUSD will also monitor staff and students throughout the day for signs of illness.



**WELLNESS CHECK POINTS
WILL BE SET UP AT EACH
SCHOOL ENTRANCE**

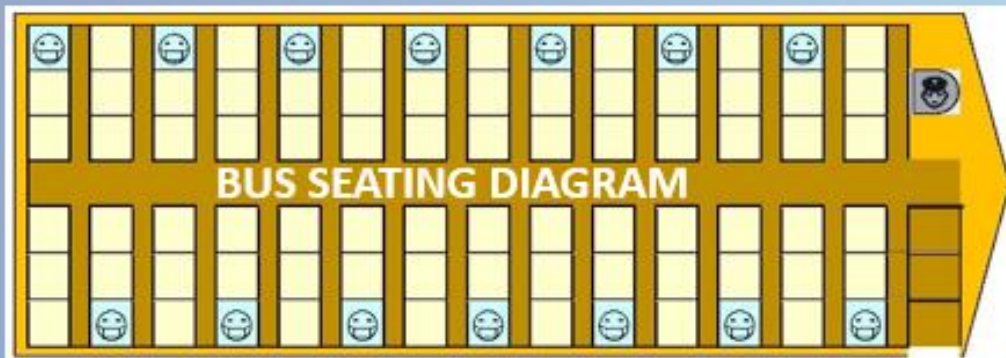


REIMAGINING SCHOOLS & FACILITY REOPENING PLANS 2020-21

Physical Distancing on School Buses.
CDC/CDE **Determine maximum capacity of students for each vehicle while meeting 6-foot physical distancing objectives.**
Guideline:

2 Bus & Parent Drop-Off and Pick-Up Zones

❖ Student Transportation-Buses



14 STUDENTS PER LARGE BUS AT ANY ONE TIME

- Bus seating heavily reduced per 6-foot social distancing guidelines. The District will mark or block seats that must be left vacant.
- OUSD promotes 6-foot distancing at bus stops and while loading and unloading.
- Windows will be left opened and ventilation on during all bus trips



❖ Parent and Student Pick Up and Drop Off

- Students will be dropped off in normal designated areas
- Parents must remain in their cars while dropping off or picking up their students
- City/County resources to be asked to help manage traffic issues



REIMAGINING SCHOOLS & FACILITY REOPENING PLANS 2020-21

CDC/CDE
Guideline:

Hygiene. Plan to address hygiene practices to ensure personal health and safety in school facilities and vehicles.

3 Hand Washing Stations



- ❖ Schools will feature added outdoor handwashing stations to supplement the existing restroom sinks.
- ❖ Hand sanitizer (with a minimum of 60 percent alcohol) will be available in all areas and supervised at or near all workstations and on buses.
- ❖ Orange Unified School District, per CDC Guidelines, promotes washing hands when: arriving and leaving home; arriving at and leaving school; after playing outside; and after having close contact with others.



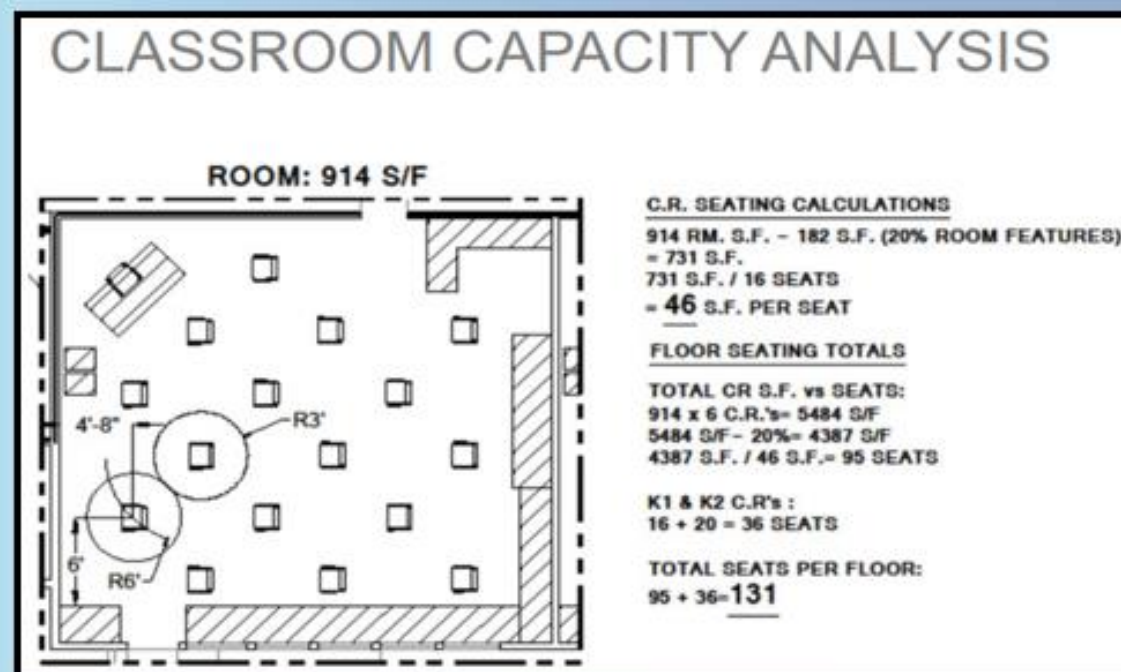
REIMAGINING SCHOOLS & FACILITY REOPENING PLANS 2020-21

CDC/CDE
Guideline:

Physical Distancing. Plan to meet physical distancing standards in school facilities and vehicles.

4 Classroom Layouts

- ❖ OUSD plans to limit the number of people in all campus spaces to the number that can be reasonably accommodated while maintaining a minimum of 6 feet of distance between individuals.
- ❖ To the extent possible, and as recommended by the CDC, OUSD will attempt to create smaller student/educator cohorts to minimize the mixing of student groups throughout the day.
Minimize movement of students, educators, and staff as much as possible.



Elementary School Layout
16-20 students per classroom



ORANGE UNIFIED GOAL: Get as many students back to our schools as possible in a safe, clean and healthy environment!



REIMAGINING SCHOOLS & FACILITY REOPENING PLANS 2020-21

Updated Site Maps. Provide Principals and staff a site map with social distancing strategies mapped out.

4 Site Plan Maps

VILLA PARK ELEMENTARY



REENTRY PLAN LEGEND

- ★ Entry Points
- Bus Drop Off
- Parent Drop Off
- Hand Washing Stations
- Food Speed Line
- Shade Shelter (Already Installed)
- F&E Storage Container
- + Isolation Holding Area
- PlexiGlass Barrier (Standard)
- PlexiGlass Barrier (Hanging)

CLASSROOM CAPACITIES (WITH SOCIAL DISTANCING)

Classroom #	Social Distancing Capacity	Grade Level(s)	Classroom #	Social Distancing Capacity	Grade Level(s)	Classroom #	Social Distancing Capacity	Grade Level(s)
K1	24	K	20	20	K	44	20	TBD
K2	24	K	21	20	1	45	20	TBD
1	20	4	22	16	1	51	20	5
2	20	4	31	20	2	52	20	5
3	20	4	32	20	2	53	20	5
4	20	3	33	20	2	62	16	6
5	20	3	34	20	TBD	63	16	6
6	20	3	41 (Comp Lab)	20	TBD	64	16	6

TOTAL STUDENTS ONSITE PER DAY: 602

Classroom #	Social Distancing Capacity	Grade Level(s)
MPR	60	5
Outdoor	70	5



REIMAGINING SCHOOLS & FACILITY REOPENING PLANS 2020-21

CDC/CDE
Guideline:

Clean and disinfect surfaces frequently touched by students during meal service, including tables, chairs and carts.

5 Food Service Safety



- ❖ OUSD will encourage physical distancing through increased spacing, small groups, and limited mixing between groups.
- ❖ OUSD will stagger mealtimes to allow for cleaning between meal services and to serve students in smaller groups.
- ❖ OUSD will provide physical guides, such as sneeze guards and partitions and signage to promote social distancing





REIMAGINING SCHOOLS & FACILITY REOPENING PLANS 2020-21

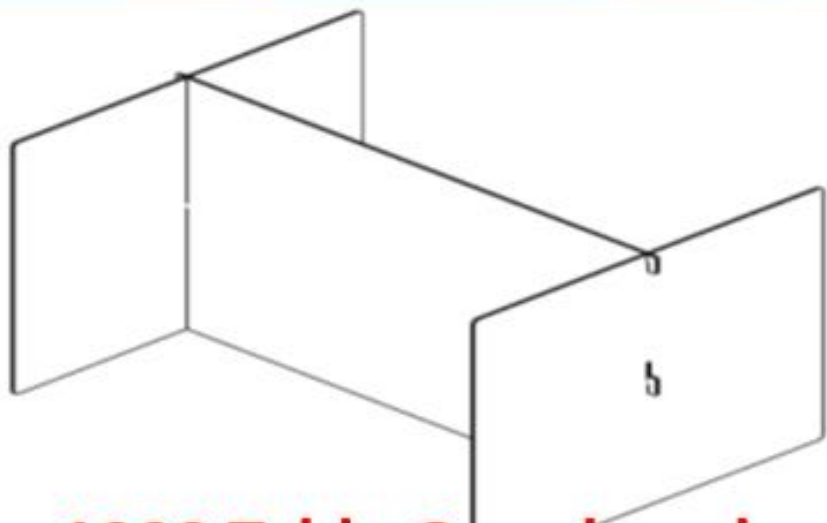
CDC/CDE
Guideline:

Staff. Develop a plan that ensures physical distancing among staff in their work environment to reduce spread of COVID-19.

6 Sneeze Guards & Partitions

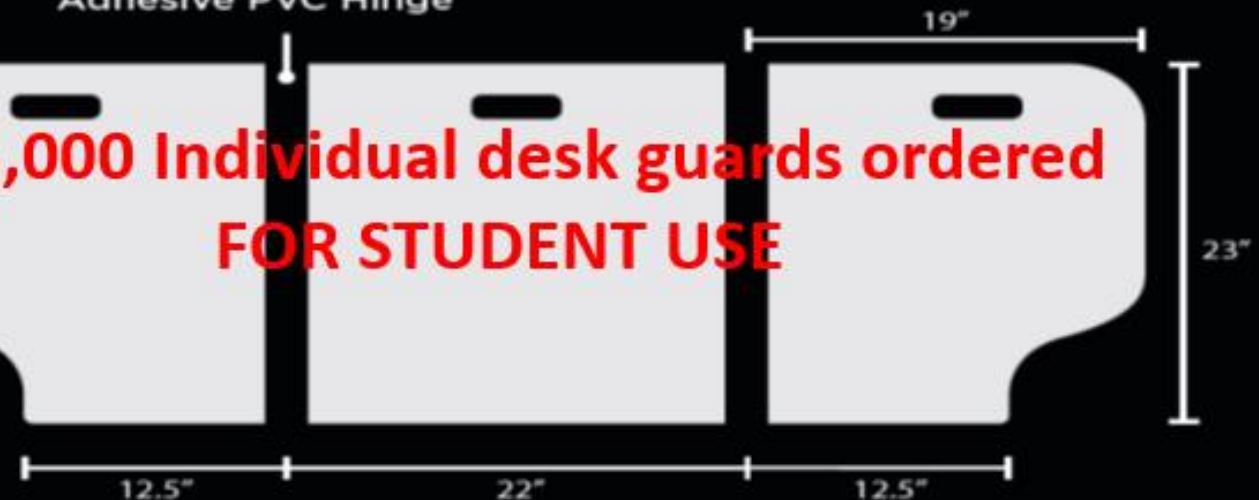


Adhesive PVC Hinge



1000 Table Guards ordered

**15,000 Individual desk guards ordered
FOR STUDENT USE**





REIMAGINING SCHOOLS & FACILITY REOPENING PLANS 2020-21

CDC/CDE
Guideline:

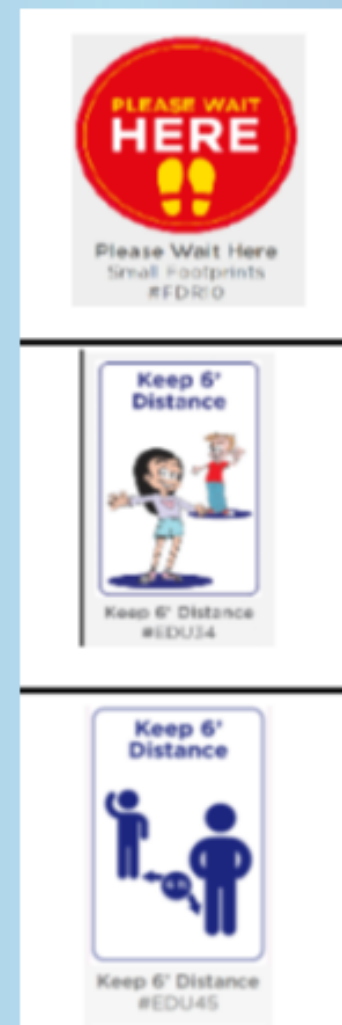
Signage. To promote and remind
ALL of social distancing at OUSD
sites.

7 Distancing Signage



Signs to
promote
Handwashing

Directional
signage



Kid Friendly Social
Distancing Signage

Wellness Check Point
Signage for school entry
areas





REIMAGINING SCHOOLS & FACILITY REOPENING PLANS 2020-21

Cleaning and Disinfecting. Plan to meet cleanliness and disinfecting standards in school facilities and vehicles.

8 Cleaning Procedures

- ❖ The Operations department has developed a staffing and cleaning plan to accommodate the new CDE/CDE guidelines for safe operation of schools.



❖ Cleaning

- Classrooms/Offices: All OUSD sites will be sanitized daily with 99.9% antibacterial and antiviral sanitizing products.
- Restrooms: Highly Critical Area; thorough and complete disinfecting of all restrooms completed in the evenings. Day custodians are to replenish restroom products, disinfect touch points, check for vandalism and ensure there are no slip hazards.





REIMAGINING SCHOOLS & FACILITY REOPENING PLANS 2020-21

“

We know that for many of us, this is the toughest challenge that we'll ever face, perhaps in our lifetime. But when it comes to ensuring that California students continue receiving a high-quality education—and doing so safely—we must rise to meet the challenge.



-Tony Thurmond
State Superintendent of Public Instruction

”

