

Program Management Update:

Orange High School S.T.E.M. Complex

This tour will focus on these S.T.E.M. building opening soon featuring:

- 12 Laboratory Classrooms
- 1 General Classroom
- 2 Living Skills Classrooms
- 1 Elevator
- Custodial Closet / Storage
- 2 IDF Rooms
- 6 Student Restrooms (2 non-gender)
- 4 Staff Restrooms
- 2 Living Skills Restrooms
- 1 Living Skills Kitchen Area



First Floor Details

Chemistry Classrooms (4), Chemistry Resource Room, General Classroom, Living Skills Classroom (2), Student Restrooms (3), (1 non-gender), Staff Restrooms (2).

Chemistry Classrooms Features (2,207 sq. ft.)

- Teaching wall with built in casework, wardrobe style cabinets, movable marker boards, trackable wall surface, with side acoustical wall panels
- Fixed demonstration table with apparatus rod, gas connection, sink, and emergency classroom gas shutoff
- Student storage cubbies, lockable and glass front casework, base cabinets with sinks and gas connections
- Fume hood, goggle sanitizing cabinet, carboy, stainless steel cart, emergency eyewash/shower
- Up to 40 student stations, (10) Trespa top perimeter tables for groups of 4, teaching station with removable podium
- Technology control Audio/Visual system, two 75" LED monitors and ceiling mounted speaker system, programmable/dimmable room lighting

Chemistry Resource Room Features (329 sq. ft.)

- Wardrobe Style cabinets with lockable solid and glass front casework.
- Fume hood, Sink, Lab Refrigerator/Freezer, Ice maker, Steam Scrubber/Lab glassware washer, Incubator, Autoclave, Carboy, Water Still, Goggle sanitizing cabinet, Stainless steel cart, emergency eyewash/shower, Pegboard w/drip through, Acid Storage Cabinet

General Classroom Features (1,441 sq. ft.)

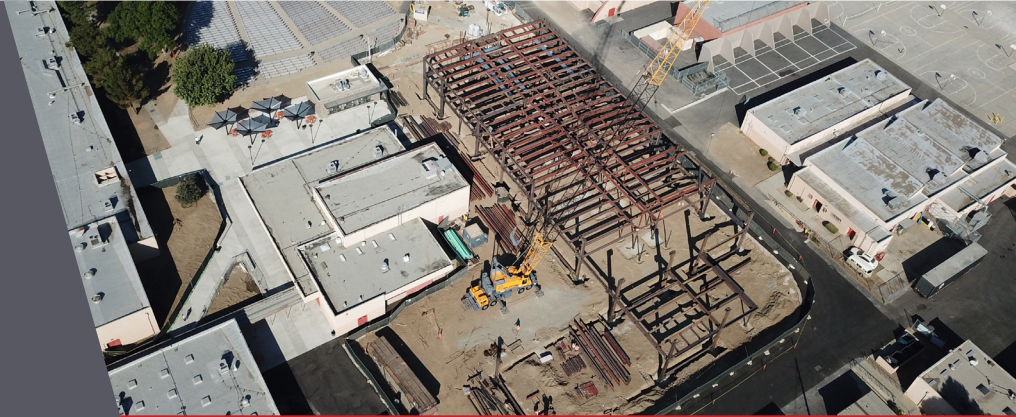
- Teaching wall with built in casework, movable marker boards, trackable wall surface, with side acoustical tackable wall panels
- Up to 40 student stations, teaching station with removable podium
- Technology controlled Audio/Visual system, two 75" LED monitors and ceiling mounted speaker system, programmable/dimmable room lighting with daylight sensing device

Living Skills Features (1,123 sq. ft. per side)

- Teaching wall with built in casework, wardrobe style cabinets, movable marker boards, trackable wall surface, with tackable acoustical wall panels.
- Technology control Audio/Visual system, two 75" LED monitors and ceiling speaker system, programmable/dimmable room lighting.
- Up to 23 student stations, Nesting and foldable tables, teaching station with removable podium.
- Kitchen with refrigerator with ice/water dispenser, Dishwasher, Clothes Washing machine, Clothes Dryer, Range.
- Testing for two computers
- Quiet room with soft comfortable seating and ottoman
- 2 Restrooms with 6' folding changing table and safety rail

Additional S.T.E.M. Building Features

- New Life Skills Bus Drop-Off
- New Bus Drop-Off
- Temporary Bus Drop-Off
- New Snack Bar & Outdoor Dining Area
- New Utility & Food Service Yard
- New Fire Lanes
- IDF Rooms (2)



Orange HS – Measure S Team

Orange Unified Leadership:

- David Rivera, Asst. Superintendent / CBO
- Scott Harvey, Sr. Executive Director

Program Management: Cumming

Architect: Lionakis

DSA Inspector of Record: Knowland

DSA Lab of Record: Ninyo & Moore

General Contractor: Pinner



Second Floor Details

Science Classrooms (8), Instructor's Resource Room, Student Restrooms (3) (1 non-gender), Staff Restrooms (2)

Science Classroom Features (1,647 sq. ft.)

- Teaching wall with built in casework, wardrobe style cabinets, movable marker boards, trackable wall surface, with side acoustical wall panels
- Fixed demonstration table with apparatus rod, gas connection, sink, and emergency classroom gas shutoff.
- Student storage cubbies, lockable and glass front casework, base cabinets with sinks and gas connection
- Up to 40 student stations, (6) Trespa top perimeter tables for groups of 6, teaching station with a removable podium.
- Goggle sanitizer cabinet, carboy, stainless steel cart.
- Technology control Audio/Visual system, two 75" LED monitors and wall mounted speaker system, programmable/dimmable room lighting with daylight sensing device.

Instructors Resource Room Features (717 sq. ft.)

- Fume hood, Sink, Lab Refrigerator/Freezer, Ice maker, Steam Scrubber/Lab glassware washer, Refrigerator with ice/water dispenser, Incubator, Autoclave, Carboy, Water Still, Goggle sanitizing cabinet, Stainless steel cart, emergency eyewash/shower, Pegboard w/drip through, Acid Storage Cabinet.

