



# ORANGE UNIFIED SCHOOL DISTRICT

## Measure S Bond Program

### April 2019 Monthly Progress Report



**PERIOD COVERED:**

April 1-30, 2019

**FISCAL YEAR**

FY 2018-2019

**PROGRESS REPORT NO.**

PR-022-1819-022

**PREPARED BY:**

**CUMMING**  
Building Value Through Expertise



## TABLE OF CONTENTS

### **1.0 Executive Summary**

- 1.1 Program Summary
- 1.2 Program Highlights/Key Milestones
- 1.3 Look Ahead (next 90 days)

### **2.0 Project Status Report**

- Canyon HS – Science Center
- El Modena HS – Science Center
- Orange HS – Utility Infrastructure (Increment # 1)
- Orange HS – Science Center (Increment # 2)
- Villa Park HS – Interim Housing & Science Center

### **3.0 Financial Report**

- 3.1 Project Cost Estimate
  - Budget vs Actuals with Vendor details per High School
- 3.2 Cash Flow Projections

### **4.0 Program Schedule Summary**



## 1.0 EXECUTIVE SUMMARY

### 1.1 Program Summary

#### **Division of State Architects (DSA) approval to establish design criteria completed as follows:**

- (Completed) January 31, 2019 - Canyon HS Science Center (04-117300)
- (Completed) November 6, 2018 - El Modena HS Science Center (04-117098)
- (Completed) August 16, 2018 - Villa Park HS Science Center (04-117022)
- (Completed) July 12, 2018 - Orange HS Science Center (Increment # 2) (04-116859)
- (Completed) April 10, 2018 - Orange HS Increment # 1 (Satellite Kitchen) (04-116673.2)
- (Completed) March 1, 2018 - Orange HS Increment #1 (Infrastructure Upgrades, Move Relocatable Buildings, Bus Drop-Off, Restroom Renovation Project) (04-116673.1)
- (Completed) February 7, 2018 - Villa Park HS Interim Housing (DSA Application #04-116788)

#### **Construction start and tentative scheduled starts, as follows:**

- Tentative start set for June 2019 – Canyon HS Science Center
- ([Construction Start](#)) February 18, 2019 – Orange HS Science Center (Increment #2)
- ([Construction Start](#)) April 2, 2019 – El Modena HS Science Center
- ([Construction Start](#)) January 7, 2019 – Villa Park HS Science Center (both Interim Housing and Science Center)
- ([Construction Start](#)) June 15, 2018 – Orange HS Site Infrastructure (Increment #1)

### 1.2 Program Highlights/Key Milestones

#### **April 18<sup>th</sup> Approved Board of Education Items:**

- An amendment to the CMAS Agreement contract to ACCO Engineered Systems for the Owner Furnished Contractor Installed (OFCI) Electrical System Equipment at El Modena HS STEM Building, for a total change to contract of \$9,959.85.
- An amendment of the professional services contract with gkkworks / Cannon Design to complete the design of the interim food service facility, additional requiring DSA submittal of the temporary facility due to Building Code and Health Department requirements, in the amount of \$26,120.
- An amendment of the CMAS agreement contract with ACCO Engineered Systems for the Owner Furnished Contractor Installed (OFCI) Electrical System Equipment at Villa Park HS IH & STEM Building, for a total change to contract of \$361.93.
- An adjustment on Amendment # 1 (should have been listed as Amendment # 3), Amendment # 1 – Cordoba Inc. – Furniture, Fixtures and Equipment Coordination and Consulting for all



Measure S projects. The addition of services for an FF&E Project Manager for the Measure S Bond projects in the amount of \$297,750.

### **Phase II Measure S Bond Project Development Update**

- On 4/25/19, a meeting was held with LPA to review the presentation for Villa Park HS that will outlined the two conceptual options to ask the Board for a recommendation to enter design.
- On 4/17/19, a planning meeting was held on the Orange HS cafeteria to go over the three options that they have outlined, which include the Tier I and Tier II results that are driving one of the options.
- On 4/9/19, an executive steering committee meeting for El Modena HS, was held at the district offices, regarding direction of the conceptual options and next steps.

### **California Environmental Quality Act (CEQA) Compliance Achieved (as required by law):**

- Villa Park HS – Notice of Exemption (Board approved on 9/20/18).
- Canyon HS – Notice of Exemption (Board approved on 7/26/18).
- Orange HS – Notice of Exemption (Board approved on 3/8/18).
- El Modena HS – Notice of Exemption (Board approved on 3/8/18).

### **Citizens' Oversight Committee (COC)**

- On 4/24/19, There was a Measure S Bond Program update and State Matching Fund update presented to the COC on location at the Orange HS Library, by Scott Harvey. The full project team was in attendance to answer any questions and to give a tour of the completed facilities under Increment # 1 and the work to date. The next meeting # 11 is scheduled for July 17, 2019.

*COC Meeting agendas, meeting minutes, reports, and additional information can be found at;*  
<https://www.orangeusd.org/measure-s/citizens-oversight-committee>

### **Contractor Pre-Qualification**

- As of 11/21/18, current contractor prequalification includes:
  - 24 Prime/GC's – 17 large Prime Contractors are included in this category and able to financially qualify and perform at the level required to bid the large projects at the high schools.
  - There are currently 124 Mechanical / Electrical / Plumbing contractors' (there were 36 MEP's added during the Orange HS Science Center outreach for S1819-001).

*Additional information can be found at;* <https://www.orangeusd.org/measure-s>

### **Project Achievements**

- April 13, 2019, A groundbreaking ceremony has held El Modena HS Science Center at 10:00 a.m. in the amphitheater.



- April 8, 2019, the interim housing modular classrooms at Villa Park HS were turned over for school use.
- April 2, 2019, a Notice to Proceed was issued to Angeles Contractor, Inc. (ACI) for the start of construction at El Modena HS Science Center, for 4/15/19.
- April 2, 2019, At Villa Park HS, building 300 classrooms were moved to nine (9) interim housing modular classrooms, installed on the south side of campus.

### 1.3 Look Ahead (next 90 days)

#### Board of Education Agenda

##### **May 9<sup>th</sup> Tentative Items:**

- Recommending award of a construction contract in the amount of \$38,400,000, to Swinerton as the lowest responsive, responsible bidder, based on a public bid opening held on 4/18/19, where five (5) contractors submitted bids for Bid No. S1819-006 Canyon HS Science Center.

#### Program Wide

- Orange HS Increment # 1 – Process the final punch list work and paperwork for substantial completion and close out (Notice of Completion) of the project based on contract completion date.
- Canyon HS Science Center – Anticipate the DSA approved for the Interim Modular Kitchen at Canyon HS 04-118418.
- Canyon HS Science Center – Request for Proposal selection of the prequalified IOR /LOR to establish Inspector of Record and Lab of Record services prior to construction.
- Canyon HS Science Center – A groundbreaking ceremony set for Saturday, June 8, 2019, at 10:00 a.m.



## 2.0 PROJECT STATUS REPORT



Canyon High School  
New STEM Building

CANYON HIGH SCHOOL



EL MODENA SCIENCE CENTER

Overall View

HED



Orange High School Science Center



AT VILLA PARK HIGH SCHOOL

LPA





## CANYON HS SCIENCE CENTER

- 12 Laboratory Rooms
- 12 General Classrooms
- Student Services
- New Food Services
- New Multi-Purpose Room Entry
- Parking Lot Improvements
- Infrastructure Upgrade and Improvements
- Landscape Improvements

### Project Update (Bid & Award):

- On 4/18/19, a public bid opening was held for Bid No. S1819-006 Canyon HS Science Center, the following five (5) contractors submitted bids;

1	Swinerton	\$38,400,000
2	Bernards	\$39,415,000
3	Angeles Contractor	\$41,157,000
4	Amoroso Construction	\$41,537,000
5	Pinner	\$42,489,000

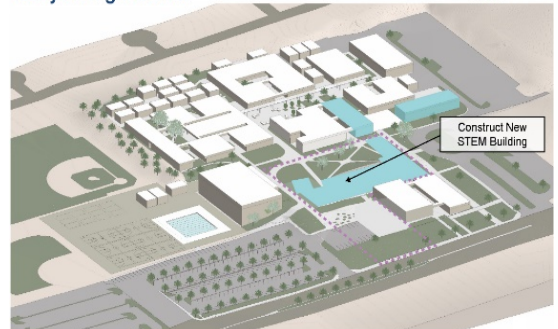
the lowest responsive responsible bidder was, Swinerton, in the amount of \$38,400,000, whose bid is also within the estimated budget for this project. We will review the bid documents to prepare recommendation for approval at the next Board meeting on May 9, 2019.

- On 4/4/19, a legal notice was submitted on the Purchase of Commercial Foodservice Equipment for the modular kitchen. The bid will be advertised on 4/11/19 with a sealed bid due date of 5/9/19.
- On 4/3/19, Encorp completed a Phase I assessment on the demolition areas, as required by law.
- Construction is tentatively scheduled to start in June 2019 to include all construction.

Canyon High School  
New STEM Building



Canyon High School





## EL MODENA HS SCIENCE CENTER

- |   |  |
|---|--|
| <ul style="list-style-type: none"><li>• 12 Laboratory Rooms</li><li>• 1 General Classrooms</li><li>• 2 Medically Fragile Classrooms</li></ul> | <ul style="list-style-type: none"><li>• Relocation of Campus MDF</li><li>• Technology &amp; Utility Upgrade</li><li>• Landscape Improvements</li></ul> |
|---|--|

### Project Update (**Construction**):

- Weekly construction meetings are being held on Monday's at 1:00 p.m.
- On 4/19/19, Ninyo & Moore completed limited environmental Phase II assessment as required by law.
- As of 4/2/19, the contract Notice to Proceed was issued to Angeles Contractor, Inc. (ACI) which reflects a construction start date of 4/15/19.

[See Construction Photo's below:](#)



Preserving and relocating select trees.



Clearing the site and gathering construction debris and material removal.



Preparing Storage Shed for demolition



Excavating and uncovering underground lines to be protected.







## ORANGE HS UTILITY INFRASTRUCTURE

- Site Utility & Infrastructure Upgrade
  - Satellite Kitchen
  - Electrical Utility Yard
- Relocate (5) and Demolish (4) of portable classroom buildings

### Project Update Increment # 1 – Site Utility Infrastructure (**Construction**):

- As of 4/12/19, Swinerton is working on the final punch list items, material turn-over, as built drawings, etc. for close out.
- As of 4/11/19, received payment application # 08, for processing prior to the final payment.

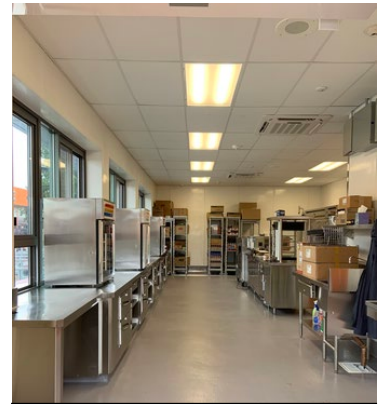
[See Construction Photo's below:](#)



Serving window equipment in place for the Satellite Kitchen (interior)



Serving window and serving lanes in place for the Satellite Kitchen. (exterior)

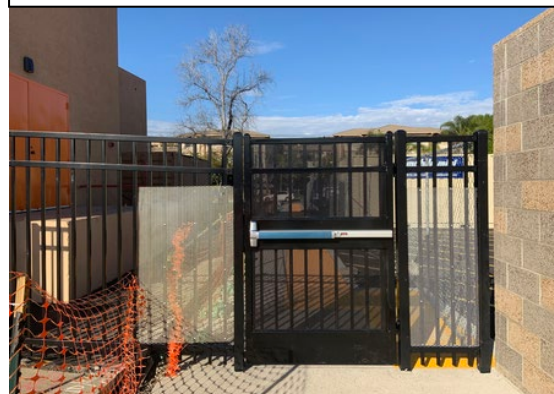


Satellite Kitchen equipment layout.

New wrought iron fencing and gates in place outside of building 100 (near bus turnout).



New wrought iron fencing gates in place at the new electrical yard.





## ORANGE HS SCIENCE CENTER

- 12 Laboratory Rooms
- 1 General Classrooms

- New Panther Pavilion Plaza
- 2 Medically Fragile Classrooms

### Project Update Increment # 2 – Science Center ([Construction](#)):

- On 4/24/19, the Citizen's Oversight Committee (COC) meeting was held in the Library at 4:30p.m. There was a site walk of both the Increment 1 project and the progress of the Science Building project, with the COC, District executives and the full project management team.
- As of 4/11/19, the following construction change directives (CD) were issued;
  - CD # 07 for a not-to-exceed (NTE) price of \$7,159 to re-route power to light poles.
  - CD # 08 for a not-to-exceed (NTE) price of \$15,000 to re-route water at fire hydrant.
  - CD # 09 for a not-to-exceed (NTE) price of \$15,000 to re-route west POC waterline.

[See Construction Photo's below:](#)



The drilling rig is set for the boring of footings for steel piles at the Science Building.



Uncovering and protecting existing piping in the excavation.



Clearing site of construction debris for the new Science Building.

**Orange High School**  
 "ONCE A PANTHER, ALWAYS A PANTHER"  
**PANTHERS**





## VILLA PARK HS SCIENCE CENTER

- 12 Laboratory Rooms
- 2 General Classrooms
- 2 Medically Fragile Classrooms

- Demolish existing building 300
- Install 10 New Portable Buildings

### Project Update (**Construction**):

- As of 4/26/19, the clearing of Building 300 continues this week as required by law, pursuant to the full building demolition to follow.
- On 4/8/19, the (9) interim modular classrooms were turned over for school use.
- On 4/5/19, the following construction change directive (CD) were issued;
  - CD-08: Remove saturated soils at fire lane Hammerhead; NTE \$10,500.
  - CD-09: Regrade H/C ramp at west parking lot; NTE \$7,250.

See Construction Photo's below:



New underground water and sewer connection terminated in trench.



Trenching and setting vault for new electrical power.



Trenching through the parking area and setting conduits.



Building 300 in containment for hazardous material removal.



Setting electrical ground vault in place, through the asphalt parking area to the east.

### 3.0 FINANCIAL REPORT



#### 3.1 Project Cost Estimate Summary

##### Measure S Bond Program Financial Report for April 2019

	Budget	Contracted to Date	Expended to Date	Quarterly Expense Apr '19 - Jun '19	% Expended
<b>PROGRAM</b>					
Phase 1 - HS Science Center	\$207,845,399	\$108,903,456	\$20,799,444	\$1,514,761	10%
Phase 2	\$80,154,601	\$304,257	\$300,789	\$0	0%
<b>Total</b>	<b>\$288,000,000</b>	<b>\$109,207,713</b>	<b>\$21,100,233</b>	<b>\$1,514,761</b>	<b>7%</b>

<b>Canyon High School</b>					
Phase 1 - HS Science Center	\$69,500,000	\$7,531,247	\$4,050,782	\$94,720	6%
Phase 2	\$2,500,000	\$54,593	\$54,593	\$0	2%
<b>Total</b>	<b>\$72,000,000</b>	<b>\$7,585,839</b>	<b>\$4,105,374</b>	<b>\$94,720</b>	<b>6%</b>

<b>El Modena High School</b>					
Phase 1 - HS Science Center	\$40,756,811	\$31,556,908	\$2,835,827	\$161,704	7%
Phase 2	\$31,243,189	\$81,450	\$81,179	\$0	0%
<b>Total</b>	<b>\$72,000,000</b>	<b>\$31,638,358</b>	<b>\$2,917,006</b>	<b>\$161,704</b>	<b>4%</b>

<b>Orange High School</b>					
Phase 1 - HS Science Center	\$52,388,588	\$39,230,733	\$10,536,562	\$1,049,391	20%
Phase 2	\$19,611,412	\$104,078	\$102,068	\$0	1%
<b>Total</b>	<b>\$72,000,000</b>	<b>\$39,334,811</b>	<b>\$10,638,630</b>	<b>\$1,049,391</b>	<b>15%</b>

<b>Villa Park High School</b>					
Phase 1 - HS Science Center	\$45,200,000	\$30,584,568	\$3,376,273	\$208,946	7%
Phase 2	\$26,800,000	\$64,137	\$62,949	\$0	0%
<b>Total</b>	<b>\$72,000,000</b>	<b>\$30,648,705</b>	<b>\$3,439,222</b>	<b>\$208,946</b>	<b>5%</b>



### 3.1 Project Cost Estimate



#### Measure S Bond Program Budget vs Actuals - By School

Monthly Progress Report April 2019	Budget	Year to Date Contracted	Year to Date Expense	Quarterly Expense Apr '19 - Jun '19	
<b>Canyon High School</b>					
<b>390-0000 Canyon HS IP Surveillance Camera and Systems</b>					
<b>1. FF&amp;E (IP Surveillance Camera)</b>					
<b>\$5000+ New Equipment</b>					
CDW GOVERNMENT INC (Parts for IP Camera Systems)	\$29,337	\$29,337	\$29,337	\$0	100.00%
DIGITAL NETWORKS GROUP INC (F/I IP Camera Software)	\$7,093	\$7,093	\$7,093	\$0	100.00%
INTER-PACIFIC INC (Install IP Based Surveillance Camera System)	\$18,163	\$18,163	\$18,163	\$0	100.00%
UNCOMMITTED	\$0	\$0	\$0	\$0	
	<b>\$54,593</b>	<b>\$54,593</b>	<b>\$54,593</b>	<b>\$0</b>	<b>100.00%</b>
<b>5. Contingency</b>					
<b>5.01 Project Contingency</b>					
UNCOMMITTED	\$3,994	\$0	\$0	\$0	
	<b>\$3,994</b>	<b>\$0</b>	<b>\$0</b>	<b>\$0</b>	<b>0.00%</b>
<b>Total 390-0000 Canyon HS IP Surveillance Camera and Systems</b>	<b>\$58,587</b>	<b>\$54,593</b>	<b>\$54,593</b>	<b>\$0</b>	<b>93.18%</b>
<b>390-9520 Canyon HS Science Center</b>					
<b>1. Design Cost</b>					
<b>1.01 Architect</b>					
GKKWORKS (Architect of Record)	\$3,207,430	\$3,207,430	\$2,266,918	\$51,133	70.68%
LIONAKIS (Program Master Specifications)	\$14,058	\$14,058	\$14,058	\$0	100.00%
UNCOMMITTED	\$626	\$0	\$0	\$0	
	<b>\$3,222,114</b>	<b>\$3,221,488</b>	<b>\$2,280,976</b>	<b>\$51,133</b>	<b>70.79%</b>
<b>2. Construction Cost</b>					
<b>2.01 Construction - Science Center</b>					
ACCO ENGINEERED SYSTEMS INC	\$159,986	\$159,986	\$0	\$0	0.00%
UNCOMMITTED	\$44,440,589	\$0	\$0	\$0	
	<b>\$44,600,575</b>	<b>\$159,986</b>	<b>\$0</b>	<b>\$0</b>	<b>0.00%</b>
<b>3. Program and Construction Management</b>					
<b>3.01 Program Management Fees</b>					
CUMMING CONSTRUCTION MGMT INC	\$614,748	\$614,748	\$472,074	\$17,435	76.79%
UNCOMMITTED	\$1,160,767	\$0	\$0	\$0	
	<b>\$1,775,515</b>	<b>\$614,748</b>	<b>\$472,074</b>	<b>\$17,435</b>	<b>26.59%</b>
<b>3.02 Construction Management Fees</b>					
GAFCON INC	\$2,579,884	\$2,579,884	\$683,956	\$17,712	26.51%
UNCOMMITTED	\$0	\$0	\$0	\$0	
	<b>\$2,579,884</b>	<b>\$2,579,884</b>	<b>\$683,956</b>	<b>\$17,712</b>	<b>26.51%</b>
<b>4. Construction Support Costs</b>					



## Measure S Bond Program Budget vs Actuals - By School

Monthly Progress Report April 2019	Budget	Year to Date Contracted	Year to Date Expense	Quarterly Expense Apr '19 - Jun '19	
<b>4.01 Rental</b>					
SEAN KHAN CONSULTING CO INC	\$257,322	\$257,322	\$0	\$0	0.00%
UNCOMMITTED	\$0	\$0	\$0	\$0	
	<b>\$257,322</b>	<b>\$257,322</b>	<b>\$0</b>	<b>\$0</b>	<b>0.00%</b>
<b>4.02 Title, Environmental, Stormwater Management</b>					
CHICAGO TITLE COMPANY	\$750	\$750	\$750	\$0	100.00%
CITY OF ANAHEIM	\$2,000	\$2,000	\$2,000	\$0	100.00%
CITY OF ANAHEIM - WATER	\$695	\$695	\$695	\$0	100.00%
COUNTY OF ORANGE - ENVIRONMENTAL HEALTH	\$1,615	\$1,615	\$1,615	\$0	100.00%
ENVIRONMENTAL AUDIT INC	\$50,800	\$50,800	\$21,375	\$0	42.08%
OUSD COST OF INTEREST DISTRIBUTION FY 16/17	\$1	\$1	\$1	\$0	100.00%
UNCOMMITTED	\$118,932	\$0	\$0	\$0	
	<b>\$174,793</b>	<b>\$55,861</b>	<b>\$26,436</b>	<b>\$0</b>	<b>15.12%</b>
<b>4.03 Commissioning</b>					
P2S ENGINEERING INC	\$49,202	\$49,202	\$4,963	\$0	10.09%
UNCOMMITTED	\$0	\$0	\$0	\$0	
	<b>\$49,202</b>	<b>\$49,202</b>	<b>\$4,963</b>	<b>\$0</b>	<b>10.09%</b>
<b>4.05 DSA Review Fees</b>					
DIVISION OF STATE ARCHITECT	\$499,825	\$499,825	\$499,825	\$5,775	100.00%
UNCOMMITTED	\$280,485	\$0	\$0	\$0	
	<b>\$780,310</b>	<b>\$499,825</b>	<b>\$499,825</b>	<b>\$5,775</b>	<b>64.05%</b>
<b>4.06 Postage, Printing &amp; Advertising</b>					
AMERICAN REPROGRAPHICS CO LLC	\$12,867	\$12,867	\$8,199	\$1,131	63.73%
SOUTHERN CALIFORNIA NEWS GROUP	\$3,352	\$3,352	\$1,885	\$1,533	56.24%
UNCOMMITTED	\$59,779	\$0	\$0	\$0	
	<b>\$75,997</b>	<b>\$16,219</b>	<b>\$10,085</b>	<b>\$2,665</b>	<b>13.27%</b>
<b>4.07 DSA Inspection</b>					
UNCOMMITTED	\$664,971	\$0	\$0	\$0	
	<b>\$664,971</b>	<b>\$0</b>	<b>\$0</b>	<b>\$0</b>	<b>0.00%</b>
<b>4.08 DSA Construction Phase Testing</b>					
UNCOMMITTED	\$664,971	\$0	\$0	\$0	
	<b>\$664,971</b>	<b>\$0</b>	<b>\$0</b>	<b>\$0</b>	<b>0.00%</b>
<b>4.10 Labor Compliance</b>					
UNCOMMITTED	\$94,996	\$0	\$0	\$0	
	<b>\$94,996</b>	<b>\$0</b>	<b>\$0</b>	<b>\$0</b>	<b>0.00%</b>
<b>4.11 Preliminary Testing (Hazmat, Topo Survey, Geo</b>					
C BELOW SUBSURFACE IMAGING (Subsurface Investigation)	\$8,445	\$8,445	\$8,445	\$0	100.00%
CALIFORNIA GEOLOGICAL SURVEY (Geology and Seismology Review)	\$3,600	\$3,600	\$3,600	\$0	100.00%
ENVIRONMENTAL NETWORK CORPORATION (Hazardous Material	\$4,245	\$4,245	\$0	\$0	0.00%
HARRINGTON GEOTECHNICAL ENGINEERING INC (Geotechnical Soils	\$13,500	\$13,500	\$13,500	\$0	100.00%
PROVENCHER, GEORGE (Fire Hydrant Flow Test)	\$720	\$720	\$720	\$0	100.00%
RMA GROUP (Utility Location / Mapping)	\$26,103	\$26,103	\$26,103	\$0	100.00%
XICOTENCATL ENRIQUE SALAZAR (Topographical Survey)	\$20,100	\$20,100	\$20,100	\$0	100.00%



**Measure S Bond Program  
Budget vs Actuals - By School**

<b>Monthly Progress Report April 2019</b>	<b>Budget</b>	<b>Year to Date Contracted</b>	<b>Year to Date Expense</b>	<b>Quarterly Expense Apr '19 - Jun '19</b>	
UNCOMMITTED	\$652,281	\$0	\$0	\$0	
	<b>\$728,994</b>	<b>\$76,713</b>	<b>\$72,468</b>	<b>\$0</b>	<b>9.94%</b>
<b>4.12 Utility Connection Fees</b>					
UNCOMMITTED	\$189,991	\$0	\$0	\$0	
	<b>\$189,991</b>	<b>\$0</b>	<b>\$0</b>	<b>\$0</b>	<b>0.00%</b>
<b>4.13 FF&amp;E (Laboratory Tables and Chairs, other)</b>					
UNCOMMITTED	\$1,519,934	\$0	\$0	\$0	
	<b>\$1,519,934</b>	<b>\$0</b>	<b>\$0</b>	<b>\$0</b>	<b>0.00%</b>
<b>4.15 Legal Counsel</b>					
UNCOMMITTED	\$94,996	\$0	\$0	\$0	
	<b>\$94,996</b>	<b>\$0</b>	<b>\$0</b>	<b>\$0</b>	<b>0.00%</b>
<b>5. Contingency</b>					
<b>5.01 Construction Contingency</b>					
UNCOMMITTED	\$3,799,836	\$0	\$0	\$0	
	<b>\$3,799,836</b>	<b>\$0</b>	<b>\$0</b>	<b>\$0</b>	<b>0.00%</b>
<b>5.02 Project Contingency</b>					
UNCOMMITTED	\$8,225,599	\$0	\$0	\$0	
	<b>\$8,225,599</b>	<b>\$0</b>	<b>\$0</b>	<b>\$0</b>	<b>0.00%</b>
<b>Total 390-9520 Canyon HS Science Center</b>	<b>\$69,500,000</b>	<b>\$7,531,247</b>	<b>\$4,050,782</b>	<b>\$94,720</b>	<b>5.83%</b>
<b>390-TBD Canyon HS Unallocated Funds</b>					
<b>1. Unallocated Bond Funds</b>					
<b>1.01 Unbudgeted Bond Funds</b>					
UNCOMMITTED	\$2,441,413	\$0	\$0	\$0	
	<b>\$2,441,413</b>	<b>\$0</b>	<b>\$0</b>	<b>\$0</b>	<b>0.00%</b>
<b>Total 390-TBD Canyon HS Unallocated Funds</b>	<b>\$2,441,413</b>	<b>\$0</b>	<b>\$0</b>	<b>\$0</b>	<b>0.00%</b>
<b>Canyon High School</b>	<b>\$72,000,000</b>	<b>\$7,585,839</b>	<b>\$4,105,374</b>	<b>\$94,720</b>	<b>5.70%</b>

### 3.1 Project Cost Estimate



#### Measure S Bond Program Budget vs Actuals - By School

Monthly Progress Report April 2019	Budget	Year to Date Contracted	Year to Date Expense	Quarterly Expense Apr '19 - Jun '19	
<b>El Modena High School</b>					
<b>391-0000 El Modena HS IP Surveillance Camera and Systems</b>					
<b>1. FF&amp;E (IP Surveillance Camera)</b>					
<b>5000+ New Equipment</b>					
CDW GOVERNMENT INC (Parts for IP Camera Systems)	\$39,659	\$39,659	\$39,388	\$0	99.32%
DIGITAL NETWORKS GROUP INC (F/I IP Camera Software)	\$11,719	\$11,719	\$11,719	\$0	100.00%
INTER-PACIFIC INC (Install IP Based Surveillance Camera System)	\$30,073	\$30,073	\$30,073	\$0	100.00%
UNCOMMITTED	\$0	\$0	\$0	\$0	
	<b>\$81,450</b>	<b>\$81,450</b>	<b>\$81,179</b>	<b>\$0</b>	<b>99.67%</b>
<b>5. Contingency</b>					
<b>5.01 Project Contingency</b>					
UNCOMMITTED	\$6,299	\$0	\$0	\$0	
	<b>\$6,299</b>	<b>\$0</b>	<b>\$0</b>	<b>\$0</b>	<b>0.00%</b>
<b>Total 391-0000 El Modena HS IP Surveillance Camera and Systems</b>	<b>\$87,749</b>	<b>\$81,450</b>	<b>\$81,179</b>	<b>\$0</b>	<b>92.51%</b>
<b>391-9520 El Modena HS Science Center</b>					
<b>1. Design Cost</b>					
<b>1.01 Architect</b>					
HARLEY ELLIS DEVEREAUX (Architect of Record)	\$1,984,574	\$1,984,574	\$1,478,123	\$92,168	74.48%
LIONAKIS (Program Master Specifications)	\$14,059	\$14,059	\$14,059	\$0	100.00%
UNCOMMITTED	\$625	\$0	\$0	\$0	
	<b>\$1,999,258</b>	<b>\$1,998,633</b>	<b>\$1,492,182</b>	<b>\$92,168</b>	<b>74.64%</b>
<b>2. Construction Cost</b>					
<b>2.01 Construction (includes escalation)</b>					
ANGELES CONTRACTOR, INC	\$25,818,000	\$25,818,000	\$0	\$0	0.00%
ACCO ENGINEERED SYSTEMS INC	\$345,584	\$345,584	\$0	\$0	0.00%
UNCOMMITTED	\$84,633	\$0	\$0	\$0	
	<b>\$26,248,217</b>	<b>\$26,163,584</b>	<b>\$0</b>	<b>\$0</b>	<b>0.00%</b>
<b>3. Program and Construction Management</b>					
<b>3.01 Program Management Fees</b>					
CUMMING CONSTRUCTION MGMT INC	\$524,726	\$524,726	\$362,383	\$18,951	69.06%
UNCOMMITTED	\$502,059	\$0	\$0	\$0	
	<b>\$1,026,785</b>	<b>\$524,726</b>	<b>\$362,383</b>	<b>\$18,951</b>	<b>35.29%</b>
<b>3.02 Construction Management Fees</b>					
ARCADIS U.S. INC	\$1,861,240	\$1,861,240	\$571,528	\$50,153	30.71%
UNCOMMITTED	\$0	\$0	\$0	\$0	
	<b>\$1,861,240</b>	<b>\$1,861,240</b>	<b>\$571,528</b>	<b>\$50,153</b>	<b>30.71%</b>





**Measure S Bond Program  
Budget vs Actuals - By School**

**Monthly Progress Report April 2019**

	Budget	Year to Date Contracted	Year to Date Expense	Quarterly Expense Apr '19 - Jun '19	
<b>4. Construction Support Costs</b>					
<b>4.02 Title, Environmental, Stormwater Management</b>					
CHICAGO TITLE COMPANY	\$1,500	\$1,500	\$1,500	\$0	100.00%
CITY OF ORANGE - WATER	\$16,048	\$16,048	\$16,048	\$0	100.00%
CITY OF ORANGE (Plan Check)	\$71	\$71	\$71	\$0	100.00%
ENVIRONMENTAL AUDIT INC	\$10,950	\$10,950	\$8,548	\$0	78.06%
OUSD COST OF INTEREST DISTRIBUTION FY 16/17	\$1	\$1	\$1	\$0	100.00%
UNCOMMITTED	\$84,517	\$0	\$0	\$0	
	<b>\$113,087</b>	<b>\$28,570</b>	<b>\$26,167</b>	<b>\$0</b>	<b>23.14%</b>
<b>4.03 Commissioning</b>					
P2S ENGINEERING INC	\$30,558	\$30,558	\$4,930	\$0	16.13%
UNCOMMITTED	\$0	\$0	\$0	\$0	
	<b>\$30,558</b>	<b>\$30,558</b>	<b>\$4,930</b>	<b>\$0</b>	<b>16.13%</b>
<b>4.05 DSA Review Fees</b>					
DIVISION OF STATE ARCHITECT	\$306,338	\$306,338	\$306,338	\$0	100.00%
UNCOMMITTED	\$184,379	\$0	\$0	\$0	
	<b>\$490,717</b>	<b>\$306,338</b>	<b>\$306,338</b>	<b>\$0</b>	<b>62.43%</b>
<b>4.06 Postage, Printing &amp; Advertising</b>					
AMERICAN REPROGRAPHICS CO LLC	\$16,867	\$16,867	\$15,368	\$432	91.11%
SOUTHERN CALIFORNIA NEWS GROUP	\$3,352	\$3,352	\$2,024	\$0	60.38%
UNCOMMITTED	\$28,950	\$0	\$0	\$0	
	<b>\$49,168</b>	<b>\$20,218</b>	<b>\$17,392</b>	<b>\$432</b>	<b>35.37%</b>
<b>4.07 DSA Inspection</b>					
BPI INSPECTION SERVICE	\$238,850	\$238,850	\$0	\$0	0.00%
UNCOMMITTED	\$191,367	\$0	\$0	\$0	
	<b>\$430,217</b>	<b>\$238,850</b>	<b>\$0</b>	<b>\$0</b>	<b>0.00%</b>
<b>4.08 DSA Construction Phase Testing</b>					
KOURY ENGINEERING & TESTING INC (Geotechnical Engineering)	\$323,283	\$323,283	\$0	\$0	0.00%
UNCOMMITTED	\$106,934	\$0	\$0	\$0	
	<b>\$430,217</b>	<b>\$323,283</b>	<b>\$0</b>	<b>\$0</b>	<b>0.00%</b>
<b>4.10 Labor Compliance</b>					
UNCOMMITTED	\$61,460	\$0	\$0	\$0	
	<b>\$61,460</b>	<b>\$0</b>	<b>\$0</b>	<b>\$0</b>	<b>0.00%</b>
<b>4.11 Preliminary Testing (Hazmat, Topo Survey, Geo</b>					
ALLEGIAN FIRE PROTECTION INC (Fire Hydrant Flow Test)	\$525	\$525	\$525	\$0	100.00%
CALIFORNIA GEOLOGICAL SURVEY (Geology and Seismology Review)	\$3,600	\$3,600	\$3,600	\$0	100.00%
ENVIRONMENTAL NETWORK CORPORATION (Hazardous Material)	\$6,000	\$6,000	\$0	\$0	0.00%
HARLEY ELLIS DEVEREAUX (Architect of Record)	\$14,908	\$14,908	\$14,908	\$0	100.00%
PCA ARBORISTS & CONSULTANTS INC	\$1,569	\$1,569	\$1,569	\$0	100.00%
THE CONVERSE PROFESSIONAL GROUP (Soils Investigation)	\$30,640	\$30,640	\$30,640	\$0	100.00%
UNCOMMITTED	\$430,217	\$0	\$0	\$0	
	<b>\$487,459</b>	<b>\$57,242</b>	<b>\$51,242</b>	<b>\$0</b>	<b>10.51%</b>
<b>4.12 Utility Connection Fees (with Local Permittin</b>					



**Measure S Bond Program  
Budget vs Actuals - By School**

<b>Monthly Progress Report April 2019</b>	<b>Budget</b>	<b>Year to Date Contracted</b>	<b>Year to Date Expense</b>	<b>Quarterly Expense Apr '19 - Jun '19</b>	
SOUTHERN CALIFORNIA EDISON	\$3,665	\$3,665	\$3,665	\$0	100.00%
UNCOMMITTED	\$119,254	\$0	\$0	\$0	
	<b>\$122,919</b>	<b>\$3,665</b>	<b>\$3,665</b>	<b>\$0</b>	<b>2.98%</b>
<b>4.13 FF&amp;E (Laboratory Tables and Chairs, other)</b>					
UNCOMMITTED	\$983,354	\$0	\$0	\$0	
	<b>\$983,354</b>	<b>\$0</b>	<b>\$0</b>	<b>\$0</b>	<b>0.00%</b>
<b>4.15 Legal Counsel</b>					
UNCOMMITTED	\$61,460	\$0	\$0	\$0	
	<b>\$61,460</b>	<b>\$0</b>	<b>\$0</b>	<b>\$0</b>	<b>0.00%</b>
<b>5. Contingency</b>					
<b>5.01 Construction Contingency</b>					
UNCOMMITTED	\$2,581,800	\$0	\$0	\$0	
	<b>\$2,581,800</b>	<b>\$0</b>	<b>\$0</b>	<b>\$0</b>	<b>0.00%</b>
<b>5.02 Project Contingency</b>					
UNCOMMITTED	\$3,778,895	\$0	\$0	\$0	
	<b>\$3,778,895</b>	<b>\$0</b>	<b>\$0</b>	<b>\$0</b>	<b>0.00%</b>
<b>Total 391-9520 El Modena HS Science Center</b>	<b>\$40,756,811</b>	<b>\$31,556,908</b>	<b>\$2,835,827</b>	<b>\$161,704</b>	<b>6.96%</b>
<b>391-TBD El Modena HS Unallocated Funds</b>					
<b>1. Unallocated Bond Funds</b>					
<b>1.01 Unbudgeted Bond Funds</b>					
UNCOMMITTED	\$31,155,440	\$0	\$0	\$0	
	<b>\$31,155,440</b>	<b>\$0</b>	<b>\$0</b>	<b>\$0</b>	<b>0.00%</b>
<b>Total 391-TBD El Modena HS Unallocated Funds</b>	<b>\$31,155,440</b>	<b>\$0</b>	<b>\$0</b>	<b>\$0</b>	<b>0.00%</b>
<b>El Modena High School</b>	<b>\$72,000,000</b>	<b>\$31,638,358</b>	<b>\$2,917,006</b>	<b>\$161,704</b>	<b>4.05%</b>

### 3.1 Project Cost Estimate



#### Measure S Bond Program Budget vs Actuals - By School

Monthly Progress Report April 2019	Budget	Year to Date Contracted	Year to Date Expense	Quarterly Expense Apr '19 - Jun '19	
<b>Orange High School</b>					
<b>392-0000 Orange HS IP Surveillance Camera and Systems</b>					
<b>1. FF&amp;E (IP Surveillance Camera)</b>					
<b>\$5000+ New Equipment</b>					
CDW GOVERNMENT INC (Parts for IP Camera Systems)	\$55,672	\$55,672	\$53,662	\$0	96.39%
DIGITAL NETWORKS GROUP INC (F/I IP Camera Software)	\$13,569	\$13,569	\$13,569	\$0	100.00%
INTER-PACIFIC INC (Install IP Based Surveillance Camera System)	\$34,837	\$34,837	\$34,837	\$0	100.00%
UNCOMMITTED	\$0	\$0	\$0	\$0	
	<b>\$104,078</b>	<b>\$104,078</b>	<b>\$102,068</b>	<b>\$0</b>	<b>98.07%</b>
<b>5. Contingency</b>					
<b>5.01 Project Contingency</b>					
UNCOMMITTED	\$7,710	\$0	\$0	\$0	
	<b>\$7,710</b>	<b>\$0</b>	<b>\$0</b>	<b>\$0</b>	<b>0.00%</b>
<b>Total 392-0000 Orange HS IP Surveillance Camera and Systems</b>	<b>\$111,788</b>	<b>\$104,078</b>	<b>\$102,068</b>	<b>\$0</b>	<b>91.30%</b>
<b>392-9520 Demolition of Portable Buildings</b>					
<b>2. Construction Cost</b>					
<b>2.01 Demolition of Portable Buildings</b>					
CITY OF ORANGE (Plan Check)	\$2,000	\$2,000	\$2,000	\$0	100.00%
GIANNELLI ELECTRIC INC (Low Voltage Mapping)	\$45,888	\$45,888	\$35,298	\$0	76.92%
GRUETT TREE CO INC (Removal of Trees)	\$7,625	\$7,625	\$7,625	\$0	100.00%
INTEGRATED DEMOLITION AND REMEDIATION (Abatement and	\$44,800	\$44,800	\$44,800	\$0	100.00%
J & A FENCE (Custodial Storage Fencing)	\$6,885	\$6,885	\$6,885	\$0	100.00%
KYA SERVICES LLC (Install Carpet)	\$20,824	\$20,824	\$9,564	\$0	45.93%
OLESH, KEITH (Termite Services)	\$1,500	\$1,500	\$1,500	\$0	100.00%
SOUTHERN CALIFORNIA NEWS GROUP	\$0	\$0	\$0	\$0	
TIME & ALARM SYSTEMS (Disconnect Fire Alarm and Low Voltage	\$3,100	\$3,100	\$3,100	\$0	100.00%
TRIMARK RAYGAL LLC	\$89,860	\$89,860	\$85,367	\$0	95.00%
UNIVERSAL ASPHALT CO (Remove and Patch Asphalt)	\$6,830	\$6,830	\$6,830	\$0	100.00%
UNCOMMITTED	\$0	\$0	\$0	\$0	
	<b>\$229,312</b>	<b>\$229,312</b>	<b>\$202,969</b>	<b>\$0</b>	<b>88.51%</b>
<b>Total 392-9520 Demolition of Portable Buildings</b>	<b>\$229,312</b>	<b>\$229,312</b>	<b>\$202,969</b>	<b>\$0</b>	<b>88.51%</b>
<b>392-9520 Orange HS Site Improvements (DSA 04-116673)</b>					
<b>1. Design Cost</b>					
<b>1.01 Architect</b>					
SILVER CREEK INDUSTRIES INC (Engineering for Warming Kitchen	\$29,682	\$29,682	\$29,682	\$0	100.00%
UNCOMMITTED	\$0	\$0	\$0	\$0	
	<b>\$29,682</b>	<b>\$29,682</b>	<b>\$29,682</b>	<b>\$0</b>	<b>100.00%</b>



## Measure S Bond Program Budget vs Actuals - By School

### Monthly Progress Report April 2019

	Budget	Year to Date Contracted	Year to Date Expense	Quarterly Expense Apr '19 - Jun '19	
<b>2. Construction Cost</b>					
<b>2.01 Construction</b>					
SWINERTON BUILDERS	\$6,556,428	\$6,556,428	\$5,991,647	\$914,559	91.39%
ACCO ENGINEERED SYSTEMS INC	\$209,074	\$209,074	\$209,074	\$0	100.00%
UNCOMMITTED	\$0	\$0	\$0	\$0	
	<b>\$6,765,502</b>	<b>\$6,765,502</b>	<b>\$6,200,721</b>	<b>\$914,559</b>	<b>91.65%</b>
<b>4. Construction Support Costs</b>					
<b>4.02 Title, Environmental, Stormwater Management</b>					
ORANGE COUNTY HEALTH CARE AGENCY	\$1,470	\$1,470	\$1,470	\$0	100.00%
UNCOMMITTED	\$0	\$0	\$0	\$0	
	<b>\$1,470</b>	<b>\$1,470</b>	<b>\$1,470</b>	<b>\$0</b>	<b>100.00%</b>
<b>4.05 DSA Review Fees</b>					
DIVISION OF STATE ARCHITECT	\$27,430	\$27,430	\$27,430	\$0	100.00%
UNCOMMITTED	\$0	\$0	\$0	\$0	
	<b>\$27,430</b>	<b>\$27,430</b>	<b>\$27,430</b>	<b>\$0</b>	<b>100.00%</b>
<b>4.06 Postage, Printing &amp; Advertising</b>					
AMERICAN REPROGRAPHICS CO LLC	\$7,206	\$7,206	\$7,206	\$0	100.00%
SOUTHERN CALIFORNIA NEWS GROUP	\$1,264	\$1,264	\$1,264	\$0	100.00%
UNCOMMITTED	\$1	\$0	\$0	\$0	
	<b>\$8,471</b>	<b>\$8,470</b>	<b>\$8,470</b>	<b>\$0</b>	<b>99.99%</b>
<b>4.07 DSA Inspection</b>					
KNOWLAND CONSTRUCTION SERVICES	\$104,480	\$104,480	\$96,985	\$0	92.83%
UNCOMMITTED	\$0	\$0	\$0	\$0	
	<b>\$104,480</b>	<b>\$104,480</b>	<b>\$96,985</b>	<b>\$0</b>	<b>92.83%</b>
<b>4.08 DSA Construction Phase Testing</b>					
NINYO & MOORE	\$113,255	\$113,255	\$112,544	\$0	99.37%
UNCOMMITTED	\$0	\$0	\$0	\$0	
	<b>\$113,255</b>	<b>\$113,255</b>	<b>\$112,544</b>	<b>\$0</b>	<b>99.37%</b>
<b>4.11 Preliminary Testing (Hazmat, Topo Survey, Geo</b>					
ENVIRONMENTAL NETWORK CORPORATION (Hazardous Material	\$9,100	\$9,100	\$6,680	\$0	73.41%
UNCOMMITTED	\$0	\$0	\$0	\$0	
	<b>\$9,100</b>	<b>\$9,100</b>	<b>\$6,680</b>	<b>\$0</b>	<b>73.41%</b>
<b>5. Contingency</b>					
<b>5.01 Construction Contingency</b>					
UNCOMMITTED	\$11,778	\$0	\$0	\$0	
	<b>\$11,778</b>	<b>\$0</b>	<b>\$0</b>	<b>\$0</b>	<b>0.00%</b>
<b>5.02 Project Contingency</b>					
UNCOMMITTED	\$298,271	\$0	\$0	\$0	
	<b>\$298,271</b>	<b>\$0</b>	<b>\$0</b>	<b>\$0</b>	<b>0.00%</b>





**Measure S Bond Program  
Budget vs Actuals - By School**

<b>Monthly Progress Report April 2019</b>	<b>Budget</b>	<b>Year to Date Contracted</b>	<b>Year to Date Expense</b>	<b>Quarterly Expense Apr '19 - Jun '19</b>	
<b>Total 392-9520 Orange HS Site Improvements (DSA 04-116673)</b>	<b>\$7,369,439</b>	<b>\$7,059,389</b>	<b>\$6,483,982</b>	<b>\$914,559</b>	<b>87.98%</b>
<b>392-9520 Orange HS Science Bldg (DSA 04-116859)</b>					
<b>1. Design Cost</b>					
<b>1.01 Architect</b>					
LIONAKIS (Program Master Specifications)	\$2,402,202	\$2,402,202	\$1,826,161	\$0	76.02%
UNCOMMITTED	\$563	\$0	\$0	\$0	
	<b>\$2,402,765</b>	<b>\$2,402,202</b>	<b>\$1,826,161</b>	<b>\$0</b>	<b>76.00%</b>
<b>2. Construction Cost</b>					
<b>2.01 Construction of Science Center</b>					
PINNER CONSTRUCTION	\$26,109,000	\$26,109,000	\$223,347	\$0	0.86%
ACCO ENGINEERED SYSTEMS INC	\$62,883	\$62,883	\$51,675	\$51,675	82.18%
UNCOMMITTED	\$114	\$0	\$0	\$0	
	<b>\$26,171,997</b>	<b>\$26,171,883</b>	<b>\$275,022</b>	<b>\$51,675</b>	<b>1.05%</b>
<b>3. Program and Construction Management</b>					
<b>3.01 Program Management Fees</b>					
CUMMING CONSTRUCTION MGMT INC	\$576,735	\$576,735	\$413,869	\$18,951	71.76%
UNCOMMITTED	\$761,753	\$0	\$0	\$0	
	<b>\$1,338,488</b>	<b>\$576,735</b>	<b>\$413,869</b>	<b>\$18,951</b>	<b>30.92%</b>
<b>3.02 Construction Management Fees</b>					
BALFOUR BEATTY CONSTRUCTION	\$1,640,520	\$1,640,520	\$872,650	\$64,155	53.19%
UNCOMMITTED	\$0	\$0	\$0	\$0	
	<b>\$1,640,520</b>	<b>\$1,640,520</b>	<b>\$872,650</b>	<b>\$64,155</b>	<b>53.19%</b>
<b>4. Construction Support Costs</b>					
<b>4.02 Title, Environmental, Stormwater Management</b>					
CHICAGO TITLE COMPANY	\$1,500	\$1,500	\$1,500	\$0	100.00%
OUSD COST OF INTEREST DISTRIBUTION FY 16/17	\$1	\$1	\$1	\$0	100.00%
PLACEWORKS INC	\$52,231	\$52,231	\$52,231	\$0	100.00%
STATE WATER RESOURCES CONTROL BOARD (SWRCB)	\$200	\$200	\$200	\$0	100.00%
UNCOMMITTED	\$95,298	\$0	\$0	\$0	
	<b>\$149,230</b>	<b>\$53,932</b>	<b>\$53,932</b>	<b>\$0</b>	<b>36.14%</b>
<b>4.03 Commissioning</b>					
P2S ENGINEERING INC	\$30,585	\$30,585	\$5,000	\$0	16.35%
UNCOMMITTED	\$4,755	\$0	\$0	\$0	
	<b>\$35,340</b>	<b>\$30,585</b>	<b>\$5,000</b>	<b>\$0</b>	<b>14.15%</b>
<b>4.05 DSA Review Fees</b>					
DIVISION OF STATE ARCHITECT	\$252,750	\$252,750	\$252,750	\$0	100.00%
OUSD REVOLVING CASH	\$500	\$500	\$500	\$0	100.00%
UNCOMMITTED	\$245,705	\$0	\$0	\$0	
	<b>\$498,955</b>	<b>\$253,250</b>	<b>\$253,250</b>	<b>\$0</b>	<b>50.76%</b>



**Measure S Bond Program  
Budget vs Actuals - By School**

**Monthly Progress Report April 2019**

	Budget	Year to Date Contracted	Year to Date Expense	Quarterly Expense Apr '19 - Jun '19	
<b>4.06 Postage, Printing &amp; Advertising</b>					
AMERICAN REPROGRAPHICS CO LLC	\$11,305	\$11,305	\$8,073	\$51	71.41%
SOUTHERN CALIFORNIA NEWS GROUP	\$8,878	\$8,878	\$8,518	\$0	95.93%
UNCOMMITTED	\$36,867	\$0	\$0	\$0	
	<b>\$57,050</b>	<b>\$20,183</b>	<b>\$16,590</b>	<b>\$51</b>	<b>29.08%</b>
<b>4.07 DSA Inspection</b>					
KNOWLAND CONSTRUCTION SERVICES	\$323,247	\$323,247	\$0	\$0	0.00%
UNCOMMITTED	\$145,585	\$0	\$0	\$0	
	<b>\$468,832</b>	<b>\$323,247</b>	<b>\$0</b>	<b>\$0</b>	<b>0.00%</b>
<b>4.08 DSA Construction Phase Testing</b>					
NINYO & MOORE	\$335,032	\$335,032	\$0	\$0	0.00%
UNCOMMITTED	\$125,025	\$0	\$0	\$0	
	<b>\$460,057</b>	<b>\$335,032</b>	<b>\$0</b>	<b>\$0</b>	<b>0.00%</b>
<b>4.10 Labor Compliance</b>					
UNCOMMITTED	\$81,902	\$0	\$0	\$0	
	<b>\$81,902</b>	<b>\$0</b>	<b>\$0</b>	<b>\$0</b>	<b>0.00%</b>
<b>4.11 Preliminary Testing (Hazmat, Topo Survey, Geo)</b>					
CALIFORNIA GEOLOGICAL SURVEY (Geology and Seismology Review)	\$3,600	\$3,600	\$3,600	\$0	100.00%
KOURY ENGINEERING & TESTING INC (Geotechnical Engineering)	\$13,300	\$13,300	\$13,300	\$0	100.00%
PENCO ENGINEERING INC (Topographical Survey Services)	\$42,350	\$42,350	\$41,070	\$0	96.98%
RMA GROUP (Utility Location / Mapping)	\$49,533	\$49,533	\$49,533	\$0	100.00%
UNCOMMITTED	\$580,704	\$0	\$0	\$0	
	<b>\$689,487</b>	<b>\$108,783</b>	<b>\$107,503</b>	<b>\$0</b>	<b>15.59%</b>
<b>4.12 Utility Connection Fees (with Local Permittin</b>					
CITY OF ORANGE (Plan Check)	\$2,500	\$2,500	\$2,500	\$0	100.00%
SOUTHERN CALIFORNIA EDISON	\$6,912	\$6,912	\$6,912	\$0	100.00%
UNCOMMITTED	\$154,391	\$0	\$0	\$0	
	<b>\$163,803</b>	<b>\$9,412</b>	<b>\$9,412</b>	<b>\$0</b>	<b>5.75%</b>
<b>4.13 FF&amp;E (Laboratory Tables and Chairs, other)</b>					
CONEXWEST	\$9,466	\$9,466	\$9,419	\$0	99.51%
VORTEX INDUSTRIES, INC.	\$6,804	\$6,804	\$6,804	\$0	100.00%
UNCOMMITTED	\$1,294,158	\$0	\$0	\$0	
	<b>\$1,310,428</b>	<b>\$16,270</b>	<b>\$16,223</b>	<b>\$0</b>	<b>1.24%</b>
<b>4.15 Legal Counsel</b>					
UNCOMMITTED	\$81,902	\$0	\$0	\$0	
	<b>\$81,902</b>	<b>\$0</b>	<b>\$0</b>	<b>\$0</b>	<b>0.00%</b>
<b>5. Contingency</b>					
<b>5.01 Construction Contingency</b>					
UNCOMMITTED	\$2,610,900	\$0	\$0	\$0	
	<b>\$2,610,900</b>	<b>\$0</b>	<b>\$0</b>	<b>\$0</b>	<b>0.00%</b>
<b>5.02 Project Contingency</b>					
UNCOMMITTED	\$6,628,181	\$0	\$0	\$0	



**Measure S Bond Program  
Budget vs Actuals - By School**

<b>Monthly Progress Report April 2019</b>	<b>Budget</b>	<b>Year to Date Contracted</b>	<b>Year to Date Expense</b>	<b>Quarterly Expense Apr '19 - Jun '19</b>	
	\$6,628,181	\$0	\$0	\$0	0.00%
<b>Total 392-9520 Orange HS Science Bldg (DSA 04-116859)</b>	\$44,789,837	\$31,942,032	\$3,849,611	\$134,832	8.59%
<b>392-TBD Orange HS Unallocated Funds</b>					
<b>1. Unallocated Bond Funds</b>					
<b>1.01 Unbudgeted Bond Funds</b>					
UNCOMMITTED	\$19,499,624	\$0	\$0	\$0	
	\$19,499,624	\$0	\$0	\$0	0.00%
<b>Total 392-TBD Orange HS Unallocated Funds</b>	\$19,499,624	\$0	\$0	\$0	0.00%
<b>Orange High School</b>	\$72,000,000	\$39,334,811	\$10,638,630	\$1,049,391	14.78%

### 3.1 Project Cost Estimate



#### Measure S Bond Program Budget vs Actuals - By School

Monthly Progress Report April 2019	Budget	Year to Date Contracted	Year to Date Expense	Quarterly Expense Apr '19 - Jun '19	
<b>Villa Park High School</b>					
<b>394-0000 Villa Park HS IP Surveillance Camera and Systems</b>					
<b>1. FF&amp;E (IP Surveillance Camera)</b>					
<b>\$5000+ New Equipment</b>					
CDW GOVERNMENT INC (Parts for IP Camera Systems)	\$33,369	\$33,369	\$32,182	\$0	96.44%
DIGITAL NETWORKS GROUP INC (F/I IP Camera Software)	\$8,635	\$8,635	\$8,635	\$0	100.00%
INTER-PACIFIC INC (Install IP Based Surveillance Camera System)	\$22,133	\$22,133	\$22,133	\$0	100.00%
UNCOMMITTED	\$0	\$0	\$0	\$0	
	<b>\$64,137</b>	<b>\$64,137</b>	<b>\$62,949</b>	<b>\$0</b>	<b>98.15%</b>
<b>5. Contingency</b>					
<b>5.01 Project Contingency</b>					
UNCOMMITTED	\$4,930	\$0	\$0	\$0	
	<b>\$4,930</b>	<b>\$0</b>	<b>\$0</b>	<b>\$0</b>	<b>0.00%</b>
<b>Total 394-0000 Villa Park HS IP Surveillance Camera and Systems</b>	<b>\$69,067</b>	<b>\$64,137</b>	<b>\$62,949</b>	<b>\$0</b>	<b>91.14%</b>
<b>394-9520 Villa Park HS Science Center</b>					
<b>1. Design Cost</b>					
<b>1.01 Architect</b>					
DKS ASSOCIATES (Specialty Consulting - Traffic Engineering)	\$78,310	\$78,310	\$14,400	\$0	18.39%
LIONAKIS (Program Master Specifications)	\$14,059	\$14,059	\$14,059	\$0	100.00%
LPA INC (Architect of Record)	\$2,412,840	\$2,412,840	\$1,648,335	\$101,152	68.32%
UNCOMMITTED	\$73,921	\$0	\$0	\$0	
	<b>\$2,579,130</b>	<b>\$2,505,209</b>	<b>\$1,676,794</b>	<b>\$101,152</b>	<b>65.01%</b>
<b>2. Construction Cost</b>					
<b>2.01 Construction</b>					
ACCO ENGINEERED SYSTEMS INC	\$187,356	\$187,356	\$0	\$0	0.00%
ANGELES CONTRACTOR, INC	\$23,999,806	\$23,999,806	\$0	\$0	0.00%
UNCOMMITTED	\$199,351	\$0	\$0	\$0	
	<b>\$24,386,513</b>	<b>\$24,187,162</b>	<b>\$0</b>	<b>\$0</b>	<b>0.00%</b>
<b>3. Program and Construction Management</b>					
<b>3.01 Program Management Fees</b>					
CUMMING CONSTRUCTION MGMT INC	\$566,731	\$566,731	\$394,563	\$20,467	69.62%
UNCOMMITTED	\$588,404	\$0	\$0	\$0	
	<b>\$1,155,135</b>	<b>\$566,731</b>	<b>\$394,563</b>	<b>\$20,467</b>	<b>34.16%</b>
<b>3.02 Construction Management Fees</b>					
CORDOBA CORPORATION	\$1,744,430	\$1,744,430	\$643,892	\$71,058	36.91%
UNCOMMITTED	\$0	\$0	\$0	\$0	
	<b>\$1,744,430</b>	<b>\$1,744,430</b>	<b>\$643,892</b>	<b>\$71,058</b>	<b>36.91%</b>





## Measure S Bond Program Budget vs Actuals - By School

### Monthly Progress Report April 2019

	Budget	Year to Date Contracted	Year to Date Expense	Quarterly Expense Apr '19 - Jun '19	
<b>4. Construction Support Costs</b>					
<b>4.01 Rental</b>					
ELITE MODULAR LEASING & SALES INC	\$433,129	\$433,129	\$242,284	\$0	55.94%
UNCOMMITTED	\$45,559	\$0	\$0	\$0	
	<b>\$478,688</b>	<b>\$433,129</b>	<b>\$242,284</b>	<b>\$0</b>	<b>50.61%</b>
<b>4.02 Title, Environmental, Stormwater Management</b>					
CHICAGO TITLE COMPANY	\$750	\$750	\$750	\$0	100.00%
OUSD COST OF INTEREST DISTRIBUTION FY 16/17	\$1	\$1	\$1	\$0	100.00%
PLACEWORKS INC	\$87,059	\$87,059	\$73,237	\$0	84.12%
UNCOMMITTED	\$13,840	\$0	\$0	\$0	
	<b>\$101,650</b>	<b>\$87,810</b>	<b>\$73,987</b>	<b>\$0</b>	<b>72.79%</b>
<b>4.03 Commissioning</b>					
P2S ENGINEERING INC	\$31,635	\$31,635	\$3,700	\$0	11.70%
UNCOMMITTED	\$0	\$0	\$0	\$0	
	<b>\$31,635</b>	<b>\$31,635</b>	<b>\$3,700</b>	<b>\$0</b>	<b>11.70%</b>
<b>4.05 DSA Review Fees</b>					
DIVISION OF STATE ARCHITECT	\$249,516	\$249,516	\$249,516	\$0	100.00%
UNCOMMITTED	\$127,582	\$0	\$0	\$0	
	<b>\$377,098</b>	<b>\$249,516</b>	<b>\$249,516</b>	<b>\$0</b>	<b>66.17%</b>
<b>4.06 Postage, Printing &amp; Advertising</b>					
AMERICAN REPROGRAPHICS CO LLC	\$15,206	\$15,206	\$10,483	\$0	68.94%
SOUTHERN CALIFORNIA NEWS GROUP	\$3,352	\$3,352	\$1,768	\$0	52.74%
UNCOMMITTED	\$25,637	\$0	\$0	\$0	
	<b>\$44,195</b>	<b>\$18,558</b>	<b>\$12,251</b>	<b>\$0</b>	<b>27.72%</b>
<b>4.07 DSA Inspection</b>					
BPI INSPECTION SERVICE	\$361,760	\$361,760	\$3,910	\$3,910	1.08%
UNCOMMITTED	\$24,947	\$0	\$0	\$0	
	<b>\$386,707</b>	<b>\$361,760</b>	<b>\$3,910</b>	<b>\$3,910</b>	<b>1.01%</b>
<b>4.08 DSA Construction Phase Testing</b>					
NINYO & MOORE	\$300,000	\$300,000	\$1,735	\$0	0.58%
UNCOMMITTED	\$86,707	\$0	\$0	\$0	
	<b>\$386,707</b>	<b>\$300,000</b>	<b>\$1,735</b>	<b>\$0</b>	<b>0.45%</b>
<b>4.09 Relocation</b>					
Beltmann Group, Inc.	\$4,640	\$4,640	\$0	\$0	0.00%
UNCOMMITTED	\$360	\$0	\$0	\$0	
	<b>\$5,000</b>	<b>\$4,640</b>	<b>\$0</b>	<b>\$0</b>	<b>0.00%</b>
<b>4.10 Labor Compliance</b>					
UNCOMMITTED	\$55,244	\$0	\$0	\$0	
	<b>\$55,244</b>	<b>\$0</b>	<b>\$0</b>	<b>\$0</b>	<b>0.00%</b>
<b>4.11 Preliminary Testing (Hazmat, Topo Survey, Geo</b>					
CALIFORNIA GEOLOGICAL SURVEY (Geology and Seismology Review)	\$3,600	\$3,600	\$3,600	\$0	100.00%
ENVIRONMENTAL NETWORK CORPORATION (Hazardous Material	\$3,140	\$3,140	\$0	\$0	0.00%

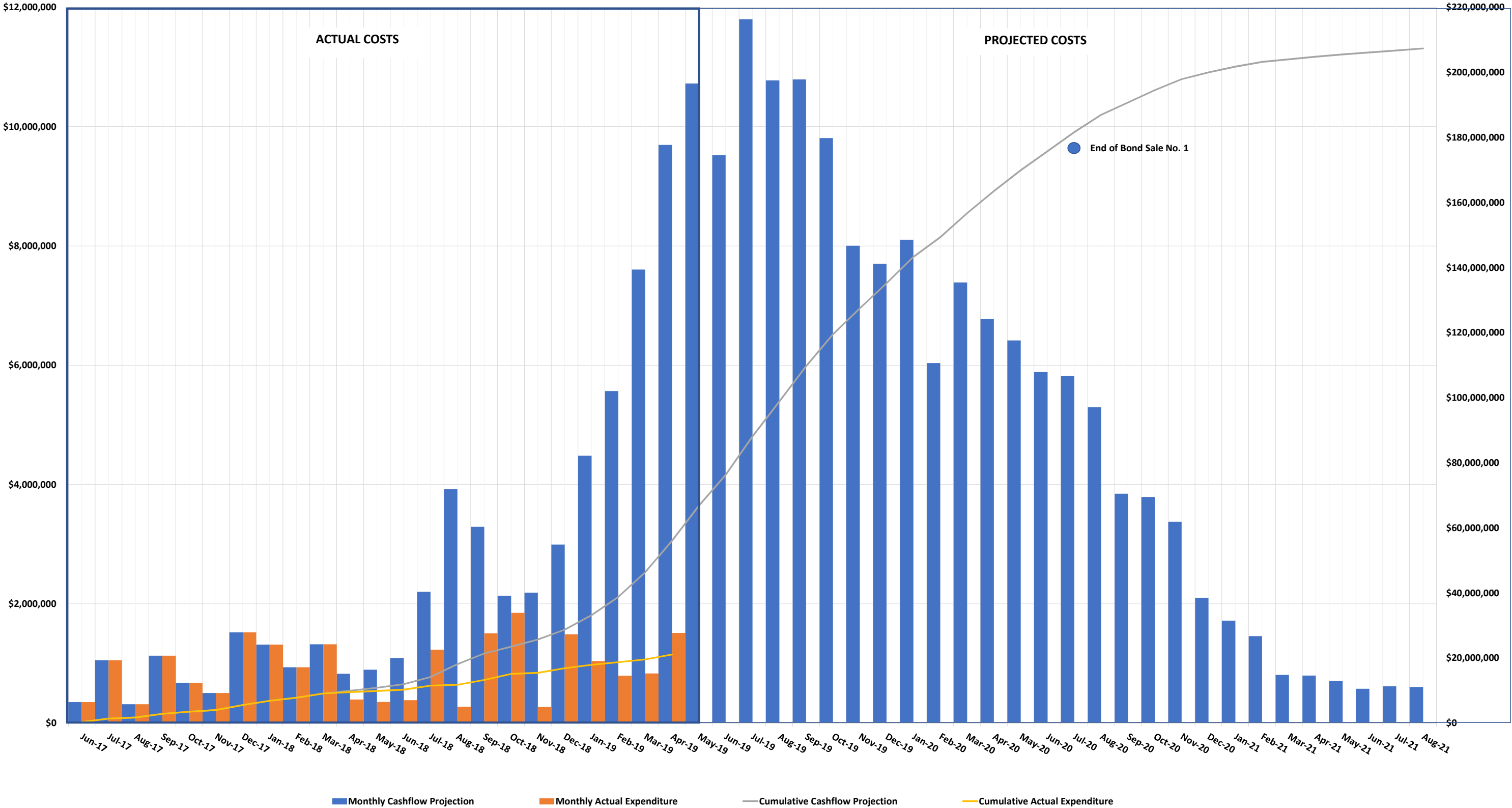


## Measure S Bond Program Budget vs Actuals - By School

Monthly Progress Report April 2019	Budget	Year to Date Contracted	Year to Date Expense	Quarterly Expense Apr '19 - Jun '19	
LEIGHTON CONSULTING INC (Geotechnical Engineering)	\$20,000	\$20,000	\$16,549	\$0	82.75%
PSOMAS (Topographical Survey)	\$27,000	\$27,000	\$21,034	\$0	77.90%
RMA GROUP (Utility Location / Mapping)	\$26,890	\$26,890	\$19,100	\$0	71.03%
SPECTRUM FIRE PROTECTION (Fire Hydrant Flow Test)	\$1,000	\$1,000	\$1,000	\$0	100.00%
UNCOMMITTED	\$377,672	\$0	\$0	\$0	
	<b>\$459,302</b>	<b>\$81,630</b>	<b>\$61,283</b>	<b>\$0</b>	<b>13.34%</b>
<b>4.12 Utility Connection Fees (with Local Permittin</b>					
UNCOMMITTED	\$110,488	\$0	\$0	\$0	
	<b>\$110,488</b>	<b>\$0</b>	<b>\$0</b>	<b>\$0</b>	<b>0.00%</b>
<b>4.13 FF&amp;E (Laboratory Tables and Chairs, other)</b>					
CULVER-NEWLIN INC	\$12,359	\$12,359	\$12,359	\$12,359	100.00%
UNCOMMITTED	\$871,544	\$0	\$0	\$0	
	<b>\$883,903</b>	<b>\$12,359</b>	<b>\$12,359</b>	<b>\$12,359</b>	<b>1.40%</b>
<b>4.15 Legal Counsel</b>					
UNCOMMITTED	\$55,244	\$0	\$0	\$0	
	<b>\$55,244</b>	<b>\$0</b>	<b>\$0</b>	<b>\$0</b>	<b>0.00%</b>
<b>5. Contingency</b>					
<b>5.02 Construction Contingency</b>					
UNCOMMITTED	\$2,396,894	\$0	\$0	\$0	
	<b>\$2,396,894</b>	<b>\$0</b>	<b>\$0</b>	<b>\$0</b>	<b>0.00%</b>
<b>5.02 Project Contingency</b>					
UNCOMMITTED	\$9,562,037	\$0	\$0	\$0	
	<b>\$9,562,037</b>	<b>\$0</b>	<b>\$0</b>	<b>\$0</b>	<b>0.00%</b>
<b>Total 394-9520 Villa Park HS Science Center</b>	<b>\$45,200,000</b>	<b>\$30,584,568</b>	<b>\$3,376,273</b>	<b>\$208,946</b>	<b>7.47%</b>
<b>394-TBD Villa Park Unallocated Funds</b>					
<b>1. Unallocated Bond Funds</b>					
<b>1.01 Unbudgeted Bond Funds</b>					
UNCOMMITTED	\$26,730,933	\$0	\$0	\$0	
	<b>\$26,730,933</b>	<b>\$0</b>	<b>\$0</b>	<b>\$0</b>	<b>0.00%</b>
<b>Total 394-TBD Villa Park Unallocated Funds</b>	<b>\$26,730,933</b>	<b>\$0</b>	<b>\$0</b>	<b>\$0</b>	<b>0.00%</b>
<b>Villa Park High School</b>	<b>\$72,000,000</b>	<b>\$30,648,705</b>	<b>\$3,439,222</b>	<b>\$208,946</b>	<b>4.78%</b>



MEASURE S BOND PROGRAM - SCIENCE CENTER (PHASE I) CASH FLOW PROJECTION  
Actual Costs thru April 30, 2019  
Projected Costs thru September 30, 2021





# TODAY

# TODAY

## Bond Measure S Passes by 62% on 11/8/16



2019						2020												2021											
3rd Quarter 2019			4th Quarter 2019			1st Quarter 2020			2nd Quarter 2020			3rd Quarter 2020			4th Quarter 2020			1st Quarter 2021			2nd Quarter 2021			3rd Quarter 2021			4th Quarter 2021		
Jul	Aug	Sep	Oct	Nov	Dec	Jan	Feb	Mar	Apr	May	Jun	Jul	Aug	Sep	Oct	Nov	Dec	Jan	Feb	Mar	Apr	May	Jun	Jul	Aug	Sep	Oct	Nov	Dec
																											</		



**Board of Education**

Alexia Deligianni-Brydges, Ed. D, President

Kathryn A. Moffat, Vice-President

Kris Erickson

Andrea Yamasaki

Rick Ledesma

John Ortega

Brenda Lebsack

Gunn Marie Hansen, Ph.D.

**Superintendent**

David A. Rivera

**Assistant Superintendent/CBO**

**Business Services**

Scott Harvey

**Senior Executive Director**

**Administrative Services**



Facilities & Planning Department

Measure S Bond Program

726 W. Collins Avenue

Orange, CA 92867

T: (714) 628-4500