

# Anaheim Hills Elementary School

## DADS CLUB



To enhance our children's experience at AHES through the completion of various facility improvement projects and to provide volunteers and donations for school events and activities.

---

For questions please contact the 2021/22 school year DC President  
Jeff Richardson at 714-812-5335 or [Jeff.W.Richardson1@gmail.com](mailto:Jeff.W.Richardson1@gmail.com)

---

### Faculty Parking Lot

Partnered with Preferred Paving to restripe and enhance the main parking lot.



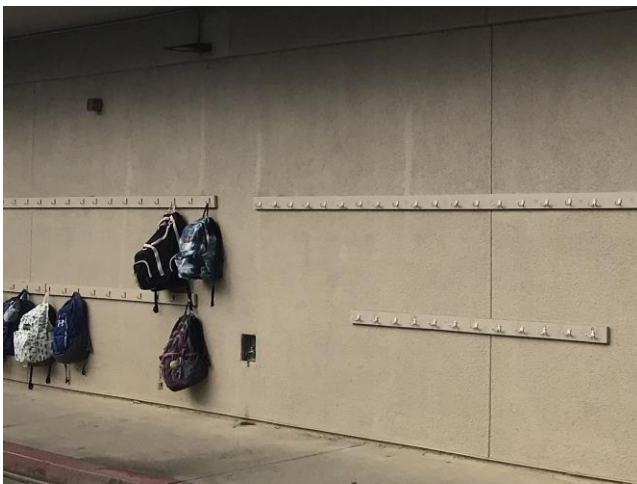
## Equipment Closet

Worked with local Eagle Scouts to hang shelving in the equipment locker adjacent the courtyard.



## Backpack Hooks

Replace damaged boards, install new boards where needed, and upgrade hooks.



## Fundraising Tiles

Annually hang our children's tiles in the classroom courtyard.



## School Front Benches

Repaired, replaced, painted sitting benches in front of school.



## PTA Storage Container

Build additional shelving units as needed, plus maintain some resemblance of organization throughout the year.



## Traffic Barricade

These customized barricade signs were made to increase student safety at morning drop-off and afternoon pick-up.



## Friendship Garden

This peaceful place is available to the children at recess and lunch. Routine maintenance is needed to keep everything looking pristine!



Before

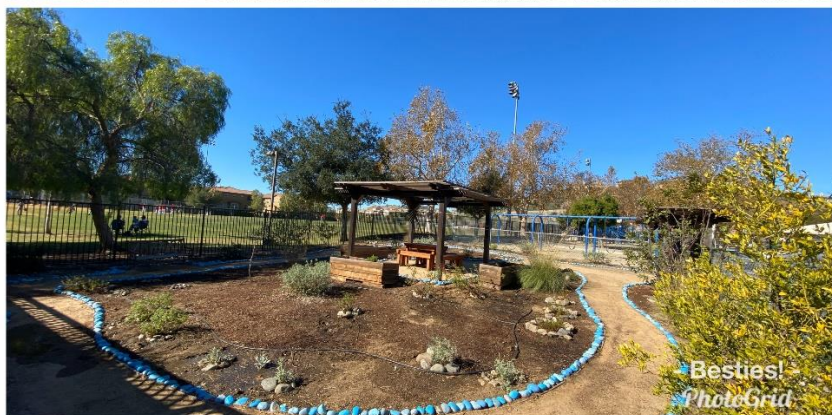


After

Before



After



## Lost & Found Cart

The children and parents needed an easier way to identify lost clothing, backpacks, lunch boxes, water bottles, etc. This portable all-in-one solution solves that problem and is easily moved depending on the need.



## Backdrop

This mobile backdrop was designed with flexibility in mind so it can be used for promotions, plays, fund raisers, photo backgrounds and other school events.



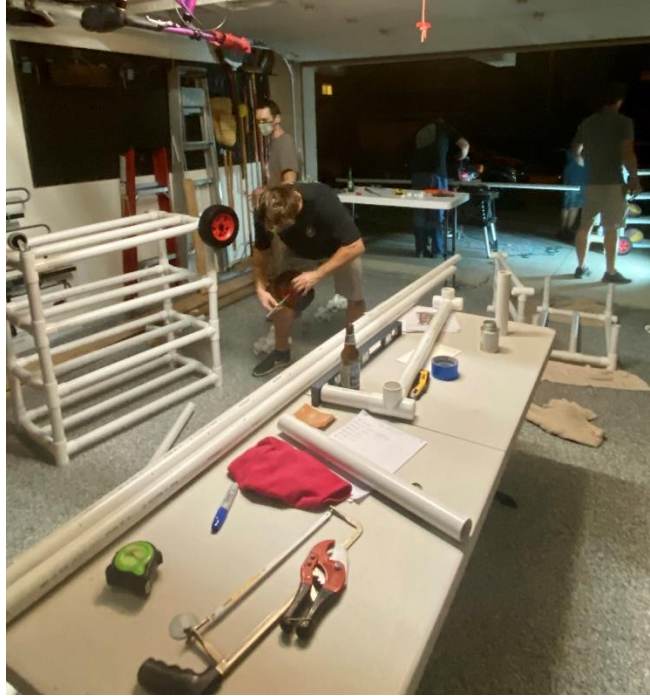
## Socially Distance Circles

800 socially distance circles were painted Panther blue. These 5 ½” circles made it easy for all students to see and know exactly where to stand when lining up.



## Recess Carts

Four Recess Carts were custom built for use on the playground. These carts allow for easy movement of the equipment as well as facilitated a better way to clean the equipment per revised school Covid guidelines.



## Carpet Squares

Due to social distancing, new carpet squares were needed for use on the blacktop. Each student had their own square for daily use for them to either sit or stand.

We turned 17 rolls of carpet into 560 20x20 squares.

