



ORANGE UNIFIED SCHOOL DISTRICT

Measure S Bond Program

February 2022 Monthly Progress Report



PERIOD COVERED:

February 1-28, 2022

FISCAL YEAR

FY 2021-2022

PROGRESS REPORT NO.

PR-056-2021-056

PREPARED BY:

CUMMING
Building Value Through Expertise



TABLE OF CONTENTS

1.0 Executive Summary

1.1 Program Summary

1.2 Program Highlights/Key Milestones

1.3 Look Ahead (next 90 days)

2.0 Project Status Report

Canyon HS – Science Center

El Modena HS – Science Center

Orange HS – Utility Infrastructure (Increment # 1)

Orange HS – Science Center (Increment # 2)

Villa Park HS – Interim Housing & Science Center

3.0 Financial Report

3.1 Project Cost Estimate

- Budget vs Actuals with Vendor details per High School

3.2 Cash Flow Projections

4.0 Program Schedule Summary

4.1 Phase I Schedule Summary

4.2 Phase II Schedule Summary



1.0 EXECUTIVE SUMMARY

1.1 Program Summary

Division of State Architects (DSA) approval to establish Phase 1 design criteria completed as follows:

- (Completed) September 22, 2020 - El Modena HS Phase 1 Quad (04-119124)
- (Completed) October 24, 2019 - Villa Park HS New Parking and Drop Off (04-118521).
- (Completed) June 25, 2019 - Orange HS Custom Tensile Fabric Shade Structures (04-118351)
- (Completed) May 2, 2019 - Canyon HS Interim Modular Kitchen (04-118418)
- (Completed) January 31, 2019 - Canyon HS Science Center (04-117300)
- (Completed) November 6, 2018 - El Modena HS Science Center (04-117098)
- (Completed) August 16, 2018 - Villa Park HS Science Center (04-117022)
- (Completed) July 12, 2018 - Orange HS Science Center (Increment # 2) (04-116859)
- (Completed) April 10, 2018 - Orange HS Increment # 1 (Satellite Kitchen) (04-116673.2)
- (Completed) March 1, 2018 - Orange HS Increment #1 (Infrastructure Upgrades, Move Relocatable Buildings, Bus Drop-Off, Restroom Renovation Project) (04-116673.1)
- (Completed) February 7, 2018 - Villa Park HS Interim Housing (DSA Application #04-116788)

Phase 1 construction started (NTP) / completed (NOC), as follows:

- Construction Start - June 15, 2018 – Orange HS Site Infrastructure (Increment #1)
 - (Completed) June 28, 2019 – Orange HS Site Infrastructure (Increment #1) (04-116673.1)
- Construction Start January 7, 2019 – Villa Park HS (Interim Housing and Science Center)
 - (Completed) March 1, 2022 – Parking Lot Drop-Off (04-118521)
- Construction Start February 18, 2019 – Orange HS Science Center (Increment #2)
 - (Completed) April 8, 2020 – Custom Tensile Fabric Shade Structure (04-118351)
 - (Completed) February 11, 2021 – Orange HS Science Center (04-116859)
- Construction Start April 2, 2019 – El Modena HS Science Center
- Construction Start June 12, 2019 – Canyon HS Interim Housing & Science Center
 - (Completed) August 7, 2020 – Interim Modular Kitchen (04-118418)

Division of State Architects (DSA) approval to establish Phase 2 design criteria as follows:

- Submitted on March 3, 2021 – Villa Park HS Phase 2 (04-119694)
 - (Completed) September 10, 2021.
- Submitted April 23, 2021 – El Modena HS Phase 2 (04-120032)
- Submitted May 26, 2021 – Orange HS Phase 2 (04-120151)
 - (Completed) January 25, 2022.
- Submitted August 17, 2021 – Canyon HS Phase 2 (04-120410)
 - (Completed) January 14, 2022.



Phase 2 construction started (NTP) / completed (NOC), as follows:

- Construction Start - September 23, 2021 – Orange HS Bldg. 300 Admin Swing Space (S2122-001C)

1.2 Program Highlights/Key Milestones

California Environmental Quality Act (CEQA) Compliance Achieved on Phase 1 (as required by law):

- Villa Park HS Science Center – Notice of Exemption (Board approved on 9/20/18).
- Canyon HS Science Center – Notice of Exemption (Board approved on 7/26/18).
- Orange HS Science Center – Notice of Exemption (Board approved on 3/8/18).
- El Modena HS Science Center – Notice of Exemption (Board approved on 3/8/18).

California Environmental Quality Act (CEQA) Compliance PENDING on Phase 2 (as required by law):

- Canyon HS Phase 2 – [Notice of Exemption \(to recommend on 4/14/2022 Board agenda\)](#)
- El Modena HS Phase 2 – [Notice of Exemption \(to recommend on 4/14/2022 Board agenda\)](#)
- Orange HS Phase 2 – [Based on CEQA review, no new Notice of Exemption needed.](#)
- Villa Park HS Phase 2 – [Notice of Exemption \(to recommend on 4/14/2022 Board agenda\)](#)

Phase 2 Measure S Bond Project Development Update:

- As of 02/28/22, at Canyon HS – Phase 2 (04-120410), DSA approved on 01/14/2022, working with CannonDesign (Arch), Cordoba (CM) and Purchasing Department to finalize the specification format and put together the bid package.
- As of 02/28/22, at Orange HS - Phase 2 (04-120151), DSA approved on 01/25/2022, working with Lionakis (Arch), Cordoba (CM) and Purchasing Department to finalize the specification format and put together the bid package.
- As of 02/28/22, at Villa Park HS - Phase 2 (04-119694), DSA approved on 9/10/2021, working with LPA (Arch), Cordoba (CM) and Purchasing Department to finalize the specification format and put together the bid package.
- As of 02/28/22, at El Modena HS - Phase 2 (04-120032), accepted for DSA Plan Review on April 23, 2021. A space occupancy load issue with fire sprinkler coverage needed to be addressed, DSA back check review continues with HED (Arch).
- As of 02/28/22, Environmental Audit is finalizing review and reports for all four high schools.
- As of 02/28/22, processed New Dimension payment application # 02 (November) for the Orange HS Bldg. 300 Swing Space work, reflecting **81%** paid overall completion, reflecting **129 calendar days** elapsed.

Program Wide Cash Flow Projection / Bond Issuance



- On 10/19/21, an updated cash flow assessment was produced, which projects the current spend threshold for Phase 1 being achieved in **February 2022**. The Phase II project schedules are based on this projection for Series B Bond sale and use of funds prior to construction activity.
- Data analysis on slow spending in the Phase I program based on construction delays and current market conditions due to the COVID-19 pandemic, could affect the selling of Series B Construction Bonds after February 2022. Final assessment by the CBO.

Project Achievements:

- On 02/03/22, the Board approved Elite Modular Leasing & Sales, Inc., for a one-year lease extension for ten (10) relocatable buildings at Villa Park High School. The nine (9) relocatable units will provide interim classrooms and one restroom modular will provide restroom facilities, for students until the Measure S STEM building project (Phase I) is completed. in the amount of \$123,244.44.
- On 02/03/22, the Board approved Change Order # 11 for Angeles at El Modena HS in the amount of; Change Order No. 11: \$15,826.26 – 0 Calendar Days Additional Contract Time; reflecting 3.97%.
- On 02/03/22, the Board approved Change Order # 20 for Swinerton at Canyon HS in the amount of; Change Order No. 20: \$29,508.07 – 0 Calendar Days Additional Contract Time; reflecting 6.78%.
- On 02/03/22, the Board approved Change Order # 01 for New Dimension at Orange HS in the amount of; Change Order No. 01: <\$384.10> – 0 Calendar Days Additional Contract Time; reflecting <-0.39%>.
- On 02/11/22, A **Notice of Partial Occupancy** was issued to Swinerton Builders for the District use of the **Canyon HS STEM Center project Landscape Area # 1 (near the MPR)**. A punch list of the remaining items was completed so that the warranty period could start.
- On 02/14/22, A **Notice of Partial Occupancy** was issued to Angeles Contractors, Inc. for the District use of the **Villa Park HS STEM Center building**. A punch list of the remaining items to complete was issued at that time, pursuant to the substantial completion of the full project.
- On 02/22/22, The Board of Education and Executive Cabinet, presented an invitation only event for the **VIP Preview Tour and Ribbon-Cutting Ceremony** for executive staff and local dignitaries for the **El Modena High School Measure S STEM Complex**.
- As of 02/28/22, processing **payment application # 33** (January), for ACI (EMHS) reflecting **96%** paid overall completion, reflecting **498 calendar days** elapsed.



- As of 02/28/22, processing [payment application # 35](#) (December), for ACI (VPHS) reflecting [96%](#) paid overall completion, reflecting [663 calendar days](#) elapsed.
- As of 02/28/22, processing [payment application # 31](#) (December) for Swinerton (CHS) reflecting [92%](#) paid overall completion, reflecting [1,029 calendar days](#) elapsed.
- As of 02/28/22, processed [payment application # 02](#) (November) for New Dimension (OHS PHII) reflecting [81%](#) paid overall completion, reflecting [129 calendar days](#) elapsed.

1.3 Look Ahead (next 90 days)

Board of Education Agenda

March 10th

1. Recommend Board approval of **Change Order # 11** for **ANGELES** at **Villa Park HS** in the amount of; **Change Order No. 11: \$2,433.14 – 0 Calendar Days** Additional Contract Time; Description: General Contractor costs based on Seven (7) PCO's: One (1) Unforeseen Conditions, Two (2) Owner Requested and Four (4) Design Related changes.
- 2.. Recommend Board approval of **Change Order # 12** for **ANGELES** at **El Modena HS** in the amount of; **Change Order No. 12: \$47,664.13 – 0 Calendar Days** Additional Contract Time; Description: General Contractor costs based on Three (3) PCO's: Two (2) Unforeseen Conditions, Zero (0) Owner Requested and One (1) Design Related changes.

Program Wide

- Orange HS Science Center – completing items on the Warranty list needing attention.
- Orange HS Science Center – Move Manager to continue with the planning and furniture needs of the swing space required for the new administration building. Assist with any removal of surplus items and/or hazardous material items from the classrooms and campus, required for the new administration building.
- Orange HS Phase II – Lionakis (Architect of Record) after DSA approval on 1/25/2022, working with Cordoba (CM) and Purchasing Department to finalize the specification format and put together the bid package.
- Orange HS Bldg. 300 Swing Space (Phase II) – New Dimension is finishing up the project and will be substantially complete in March.
- El Modena HS Science Center – Angeles Contractor (ACI) is completing HVAC pre-testing with commissioning; and start elevator install and prep for inspection, all site and landscaping work and all interior completion work being done. Preparing for occupancy in March 2022.



- El Modena HS Phase II – HED (Architect of Record) responding to any DSA comments during plan review. The Architect replaced the fabric shade structure between the library and admin buildings with a metal shade structure PC to address DSA's recent comment, and it's ready to submit by the end of this week. They are confident this backcheck set is complete and expect to get approval no later than March.
- El Modena HS Phase II – Move Manager provide additional moving boxes and supplies to the teachers relocating and continue the preparation for the relocation. Work with the furniture vendor on the timing of the occupancy of the building and plan logistics of the new furniture and assist in the logistics of storing the furniture product in storage. Assist the project manager in the delivery/installation of the owner-furnished contractor to install (OFCI) equipment. Continue to remove the surplus and hazardous material items from the classrooms. Conduct onsite pre-move planning with moving company. Relocate the teachers on 3/18/22 for Opening on 3/21/22.
- Villa Park HS Interim Housing & Science Center – Angeles completing, interior punch list work, as well as exterior paving, fire lane, retention basin, storm water piping and landscape work.
- Villa Park HS Interim Housing & Science Center – After completing the Parking and Drop Off zone (04-118521) project, re-opening the Interim housing (04-116788), so that all completed DSA final documents can be uploaded.
- Villa Park HS Phase II – LPA (Architect of Record) after DA approval on 9/10/2021, reviewing the design and specifications to prepare for bid. Addition of the boiler plate (Division 00 and 01) documents to the bid package. Reviewing the Value Engineering options, and pre-qualification needs.
- Villa Park HS Phase II – Move Manager to Assist the project manager in the delivery/installation of the owner-furnished contractor to install (OFCI) equipment. Complete the removal of the surplus and hazardous material items from the classrooms that are relocating.
- Canyon HS Science Center – Swinerton completing, sidewalk pours, site excavation, grading, parking lot paving, as well as exterior fencing and paving, completing the MPR exterior finishes on store front, sidewalks and landscape for full site turn-over to the District.
- Canyon HS Phase II – Cannon Design (Architect of Record) after DSA approval on 01/14/2022, reviewing the design and specifications to prepare for bid. Addition of the boiler plate (Division 00 and 01) documents to the bid package. Reviewing the Value Engineering options, and pre-qualification needs.
- Canyon HS Phase II – Move Manager to work with administrative staff/Principal on removing existing surplus furniture and cleanout of existing administrative areas vacated for the need to prep for Ph. 2.



2.0 PROJECT STATUS REPORT



Canyon High School
New STEM Building

CANYON HIGH SCHOOL
New STEM Building



EL MODENA SCIENCE CENTER
03.18.2017

Overall View

HED
12



Orange High School Science Center



ST VILLA PARK HIGH SCHOOL

LPA



CANYON HIGH SCHOOL

CANYON HS SCIENCE CENTER

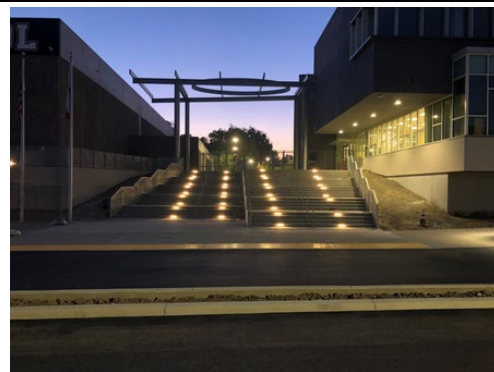
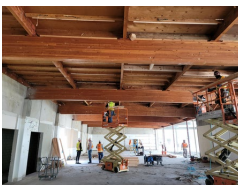
- ✓ 12 Laboratory Rooms
- ✓ 12 General Classrooms
- ✓ Student Services
- ✓ New Food Services

- ✓ New Multi-Purpose Room Entry
- ✓ Parking Lot Improvements
- ✓ Infrastructure Upgrade and Improvements
- ✓ Landscape Improvements

Project Update (Construction):

- As of 02/28/22, Swinerton completing, internal utility and wire runs, sidewalk pours, site excavation, roofing deck and penetrations, grading, parking lot paving, all interior classroom completion work being done including doors, restrooms, classrooms, as well as exterior fencing and paving, completing the MPR exterior finishes on store front, sidewalks and landscape for turn-over to the District, and preparing for substantial completion.
- On 02/03/22, the Board approved Change Order # 20 for Swinerton at Canyon HS in the amount of; Change Order No. 20: \$29,508.07 – 0 Calendar Days Additional Contract Time; Description: General Contractor costs based on Three (3) PCO's: One (1) Unforeseen Conditions, Two (2) Owner Requested and Zero (0) Design Related changes.
- On 02/11/22, A Notice of Partial Occupancy was issued to Swinerton Builders for the District use of the Canyon HS STEM Center project Landscape Area # 1 (near the MPR). A punch list of the remaining items was completed so that the warranty period could start.
- As of 02/28/22, Move Manager met with Principal & Office manager to discuss schedule for removal of existing Admin excess furniture. Met with District movers and scheduled removal of excess Admin. furniture, which was completed on 2/3 & 4. Conducted existing Admin area walkthrough and confirmed District handover of the space to Construction Manager, who notified general contractor the space was ready for their demolition to begin for the Kitchen project. Also walked existing Library for adjustments in exiting required by the existing Admin renovation/New Kitchen project. Coordinated move of new Konica copier/printer to existing Student Center and confirmed additional electrical had been installed for new Konica copier/printer in new Admin. Workroom and confirmed both were up and running. Confirmed delivery of final two teachers' desks with furniture vendor
- As of 02/28/22, processing payment application # 31 (December) reflecting 91% paid overall completion, reflecting 1,029 calendar days elapsed.

See Construction Photo's below:



Left to right: Existing Admin area demo complete and framing start on the new Kitchen, exterior sidewalk demo and prep for new concrete pour, exterior grand staircase lighting in place with hand rails.



EL MODENA HS SCIENCE CENTER

- ✓ 12 Laboratory Rooms
- ✓ 1 General Classrooms
- ✓ 2 Medically Fragile Classrooms

- ✓ Relocation of Campus MDF
- ✓ Technology & Utility Upgrade
- ✓ Landscape Improvements

Project Update (**Construction**):

- As of 02/28/22, Angeles is HVAC pre-testing to be followed with commissioning, elevator install and state inspection called, all interior classroom completion work being done, seat walls, lighting bollards, restroom fixtures and flooring finish and entrance showcase stair handrails with lights and all exterior site work for completion, preparing for occupancy.
- On 02/03/22, Board approved Change Order # 11 for Angeles at El Modena HS in the amount of; Change Order No. 11: \$15,826.26 – 0 Calendar Days Additional Contract Time; Description: General Contractor costs based on Two (2) PCO's: One (1) Unforeseen Conditions, Zero (0) Owner Requested and One (1) Design Related changes.
- On 02/22/22, The District conducted a VIP Preview Tour and Ribbon-Cutting Ceremony for executive staff and local dignitaries for the El Modena High School Measure S STEM Complex.
- As of 02/28/22, Move Manager continued to provide moving boxes and supplies to teacher classrooms that will be relocating to the new building. Continued dialogue with teachers occupying classrooms relocating and fielded questions regarding next steps. Updated PowerPoint/Flyer & supported 2/3 MS Teams call with the teachers on the moving criteria, construction schedule, and 2/22 VIP Tour. Coordinated logistics/elevator availability with general contractor and furniture vendor for furniture delivery, which occurred the week of 2/14-18. Conducted furniture punch list walkthrough with furniture vendor 2/17. Conducted on-site pre-move logistics walkthrough with moving company representative on 2/4 in prep for 3/5 move date.
- As of 02/28/22, processing payment application # 33 (January) reflecting **96%** paid overall completion, reflecting **498 calendar days** elapsed.

See Construction Photo's below:



Left to right: Interior classrooms completed, teacher's whiteboard and interior shelving ready with TV and A/V systems in place, exterior landscaping in place with mechanical room exterior completed, inside mechanical room boilers and pumps being tested.



Orange High School

"ONCE A PANTHER, ALWAYS A PANTHER"



ORANGE HS SCIENCE CENTER

- ✓ 12 Laboratory Rooms
- ✓ 1 General Classrooms

- ✓ New Panther Pavilion Plaza
- ✓ 2 Medically Fragile Classrooms

Project Update Increment # 2 – Science Center (**Completion**):

- As of 02/28/22, Pinner completing all warranty work on the interior and exterior of the STEM building, establish the warranty exceptions list with cost.
- As of 2/28/2022, the final retainage was release to Pinner. This project is complete, closed out and paid.

[See Completion Photo's below:](#)



Orange HS – Science Center STEM Building
(Dusk with lights)



VILLA PARK HIGH SCHOOL

SCHOOL OF EXCELLENCE

VILLA PARK HS SCIENCE CENTER

- ✓ 12 Laboratory Rooms
- ✓ 2 General Classrooms
- ✓ 2 Medically Fragile Classrooms

- ✓ Demolish existing building 300
- ✓ Install 10 New Portable Buildings

Project Update ([Construction](#)):

- As of 02/28/22, Angeles completing, interior utility line runs, interior framing, HVAC ductwork runs, drop ceiling, A/V finish, window and frame installs, interior drywall with mud and taping, window trim, water test prep for curtain walls, exterior paving, striping, fire lane, turn-about, retention basin, storm water piping and landscape work, preparing for substantial completion.
- On 02/14/22, A Notice of Partial Occupancy was issued to Angeles Contractors, Inc. for the District use of the Villa Park HS STEM Center building. A punch list of the remaining items to complete was issued at that time, pursuant to the substantial completion of the full project.
- As of 02/28/22, a DSA project certification re-opening check request for the Parking Drop-Off project (04-118521), was prepared so that the final sign off documents and Form 6's can be uploaded to the DSA Box and this project can be closed. Once we close this project, we will also be able to close the Interim Housing project (which will follow under separate cover).
- As of 02/28/22, Move Manager continued to provide moving boxes and supplies to teacher classrooms that will be relocating to the new building. Updated PowerPoint/Flyer & supported 2/1 MS Teams call with the principal and teachers on the moving criteria, construction schedule, and 2/12 Move & 2/14 Opening dates. Assisted the project manager in the installation & adjusting (TVs) of the owner-furnished contractor to install (OFCl) equipment. Conducted pre-move logistics site walk with moving vendor on 2/4. Reviewed outstanding items with furniture vendor. Conducted Teacher Training (AV, lighting, thermostats, etc.) on 2/9. Directed the moving company during the 2/12 move from the existing classrooms to the new building. Coordinated room key organization & distribution to teachers & custodial staff. Finalized Keys Listing spreadsheet, Employee Key Custody Records/teacher, and delivered spare keys to District Locksmith, with corresponding email of files to same and VPHS key manager.
- As of 02/28/22, processing payment application # 35 (December) reflecting **96%** paid overall completion, reflecting **663 calendar days** elapsed.

[See Construction Photo's below:](#)



Left to right: Exterior competed building, landscaping and bio-swale feature installed with exterior stairs and rail.



3.0 FINANCIAL REPORT

Measure S Bond Program Financial Report for February 2022

3.1 Project Cost Estimate

QSS Data thru 2/28/2022

	Budget	Contracted to Date	Expended to Date	Quarterly Expense Jan '22 - Mar '22	% Expended
PROGRAM					
Phase 1 - HS Science Center	\$204,427,176	\$166,475,932	\$156,426,187	\$7,638,008	76.52%
Phase 2	\$90,863,303	\$10,247,855	\$6,170,729	\$127,344	6.79%
TOTAL	\$295,290,479	\$176,723,787	\$162,596,916	\$7,765,352	55.06%
Canyon High School					
Phase 1 - HS Science Center	\$68,517,643	\$52,951,175	\$47,739,784	\$2,836,779	69.68%
Phase 2	\$5,924,142	\$1,490,081	\$815,665	\$25,164	13.77%
TOTAL	\$74,441,785	\$54,441,256	\$48,555,449	\$2,861,943	65.23%
El Modena High School					
Phase 1 - HS Science Center	\$40,402,991	\$36,499,950	\$34,279,992	\$2,576,180	84.85%
Phase 2	\$33,178,205	\$3,070,874	\$1,923,782	\$27,604	5.80%
TOTAL	\$73,581,196	\$39,570,824	\$36,203,774	\$2,603,783	49.20%
Orange High School					
Phase 1 - HS Science Center	\$51,242,678	\$42,377,745	\$42,082,520	\$0	82.12%
Phase 2	\$22,307,175	\$2,652,736	\$1,618,856	\$46,208	7.26%
TOTAL	\$73,549,853	\$45,030,481	\$43,701,376	\$46,208	59.42%
Villa Park High School					
Phase 1 - HS Science Center	\$44,263,864	\$34,647,061	\$32,323,892	\$2,225,050	73.03%
Phase 2	\$29,453,782	\$3,034,165	\$1,812,425	\$28,369	6.15%
TOTAL	\$73,717,646	\$37,681,226	\$34,136,317	\$2,253,418	46.31%
Added in October 2021 Interest Earned FY2019/2020		Budget	Expended		
Canyon High School		\$1,101,651	\$32,883		
El Modena High School		\$634,101	\$18,817		
Orange High School		\$587,274	\$17,282		
Villa Park High School		\$549,500	\$16,351		
TOTAL		\$2,872,526	\$85,333		
Added in October 2021 Interest Earned FY2020/2021		Budget	Expended		
Canyon High School		\$373,853	\$26,225		
El Modena High School		\$174,098	\$11,963		
Orange High School		\$96,615	\$6,482		
Villa Park High School		\$169,484	\$11,711		
TOTAL		\$814,049	\$56,381		
Transferred Funds		Budget			
Canyon High School (From)		-\$300,000			
Villa Park High School (To)		\$300,000			



Measure S Bond Program
Financial Report for February 2022
Budget vs Actuals by School and Budget Category with Vendor Detail

QSS Data thru 2/28/2022

	Budget	Contracted to Date	Expended to Date	Quarterly Expense Jan '22 - Mar '22	% Expended
Canyon High School					
390-9520 Canyon HS Science Center (DSA 04-117300)					
1. Design Cost					
1.01 Architect					
UNCOMMITTED	\$13,600	\$0	\$0	\$0	
GKKWORKS CANNON DESIGN	\$3,122,050	\$3,122,050	\$3,102,675	\$12,396	99.38%
LIONAKIS	\$14,058	\$14,058	\$14,058	\$0	100.00%
	\$3,149,708	\$3,136,108	\$3,116,733	\$12,396	98.95%
2. Construction Cost					
2.01 Construction					
UNCOMMITTED	\$46,588	\$0	\$0	\$0	
SWINERTON BUILDERS	\$39,875,888	\$39,875,888	\$36,383,539	\$1,999,678	91.24%
	\$39,922,475	\$39,875,888	\$36,383,539	\$1,999,678	91.14%
2.02 OFCI & Other Construction					
UNCOMMITTED	\$237,664	\$0	\$0	\$0	
ACCO ENGINEERED SYSTEMS INC	\$236,785	\$236,785	\$236,785	\$0	100.00%
AMERICAN REPROGRAPHICS CO LLC	\$1,026	\$1,026	\$0	\$0	0.00%
ANIXTER	\$5,092	\$5,092	\$0	\$0	0.00%
CDW GOVERNMENT INC	\$82,553	\$82,553	\$82,283	\$9,624	99.67%
CITY OF ANAHEIM - ELECTRICAL ENGINEERING DIV	\$91,340	\$91,340	\$91,340	\$0	100.00%
DEVELOPMENT GROUP INC	\$100,596	\$100,596	\$94,078	\$3,640	93.52%
FLINN SCIENTIFIC INC	\$9,067	\$9,067	\$9,067	\$0	100.00%
INTER-PACIFIC INC	\$12,869	\$12,869	\$12,869	\$0	100.00%
THOMPSON ENGINEERING	\$22,792	\$22,792	\$0	\$0	0.00%
TURTLE STORAGE dba AMERICAN BICYCLE CO	\$7,597	\$7,597	\$7,597	\$0	100.00%
VWR INTERNATIONAL LLC	\$16,691	\$16,691	\$16,691	\$0	100.00%
WW GRAINGER INC	\$1,039	\$1,039	\$1,039	\$0	100.00%
	\$825,110	\$587,446	\$551,748	\$13,264	66.87%
3. Program and Construction Management					
3.01 Program Management Fees					
UNCOMMITTED	\$838,835	\$0	\$0	\$0	
CUMMING CONSTRUCTION MGMT INC	\$1,362,122	\$2,200,957	\$1,298,103	\$80,117	95.30%
	\$2,200,957	\$2,200,957	\$1,298,103	\$80,117	58.98%
3.02 Construction Management Fees					
UNCOMMITTED	\$22,668	\$0	\$0	\$0	
CORDOBA CORPORATION	\$87,508	\$87,508	\$87,479	\$0	99.97%
GAFCON INC	\$2,770,943	\$2,770,943	\$2,708,506	\$186,250	97.75%



Measure S Bond Program
Financial Report for February 2022
Budget vs Actuals by School and Budget Category with Vendor Detail

QSS Data thru 2/28/2022

	Budget	Contracted to Date	Expended to Date	Quarterly Expense Jan '22 - Mar '22	% Expended
	\$2,881,119	\$2,858,451	\$2,795,985	\$186,250	97.05%
4. Construction Support Costs					
4.01 Rental					
UNCOMMITTED	\$1	\$0	\$0	\$0	
	\$1	\$0	\$0	\$0	0.00%
4.02 Title, Environmental, Stormwater Management					
UNCOMMITTED	\$48,965	\$0	\$0	\$0	
CHICAGO TITLE COMPANY	\$750	\$750	\$750	\$0	100.00%
CITY OF ANAHEIM	\$2,524	\$2,524	\$2,524	\$0	100.00%
CITY OF ANAHEIM - WATER	\$3,082	\$3,082	\$3,082	\$0	100.00%
COUNTY OF ORANGE - ENVIRONMENTAL HEALTH	\$1,615	\$1,615	\$1,615	\$0	100.00%
ENVIRONMENTAL AUDIT INC	\$50,800	\$50,800	\$21,375	\$0	42.08%
OUSD COST OF INTEREST DISTRIBUTION	\$1	\$1	\$1	\$0	100.00%
	\$107,737	\$58,771	\$29,346	\$0	27.24%
4.03 Commissioning					
UNCOMMITTED	\$23,241	\$0	\$0	\$0	
P2S ENGINEERING INC	\$49,202	\$49,202	\$41,942	\$0	85.24%
	\$72,443	\$49,202	\$41,942	\$0	57.90%
4.05 DSA Review Fees					
UNCOMMITTED	\$76,626	\$0	\$0	\$0	
DIVISION OF STATE ARCHITECT	\$504,370	\$504,370	\$504,370	\$0	100.00%
	\$580,996	\$504,370	\$504,370	\$0	86.81%
4.06 Postage, Printing & Advertising					
UNCOMMITTED	\$59,535	\$0	\$0	\$0	
AMERICAN REPROGRAPHICS CO LLC	\$13,857	\$13,857	\$10,950	\$0	79.02%
SOUTHERN CALIFORNIA NEWS GROUP	\$2,605	\$2,605	\$2,605	\$0	100.00%
	\$75,997	\$16,462	\$13,555	\$0	17.84%
4.07 DSA Inspection (IOR)					
UNCOMMITTED	\$139,851	\$0	\$0	\$0	
KNOWLAND CONSTRUCTION SERVICES	\$454,016	\$454,016	\$374,616	\$28,864	82.51%
	\$593,867	\$454,016	\$374,616	\$28,864	63.08%
4.08 DSA Construction Phase Testing (LOR)					
UNCOMMITTED	\$90,876	\$0	\$0	\$0	
AMERICAN ENGINEERING LABORATORIES INC	\$556,995	\$556,995	\$499,004	\$25,795	89.59%
	\$647,871	\$556,995	\$499,004	\$25,795	77.02%
4.09 Relocation					
UNCOMMITTED	\$15,797	\$0	\$0	\$0	
Beltmann Group, Inc.	\$3,403	\$3,403	\$3,403	\$0	100.00%
REDBIRD FLIGHT SIMULATIONS	\$3,900	\$3,900	\$3,900	\$3,900	100.00%



Measure S Bond Program
Financial Report for February 2022
Budget vs Actuals by School and Budget Category with Vendor Detail

QSS Data thru 2/28/2022

	Budget	Contracted to Date	Expended to Date	Quarterly Expense Jan '22 - Mar '22	% Expended
ULINE INC	\$1,900	\$1,900	\$1,284	\$571	67.59%
	\$25,000	\$9,203	\$8,587	\$4,471	34.35%
4.10 Labor Compliance					
UNCOMMITTED	\$47,498	\$0	\$0	\$0	
	\$47,498	\$0	\$0	\$0	0.00%
4.11 Preliminary Testing (Hazmat, Topo, Geo, etc)					
UNCOMMITTED	\$229,637	\$0	\$0	\$0	
C BELOW SUBSURFACE IMAGING (Subsurface Investigation)	\$8,445	\$8,445	\$8,445	\$0	100.00%
CALIFORNIA GEOLOGICAL SURVEY (Geology and Seismology Review)	\$3,600	\$3,600	\$3,600	\$0	100.00%
ENVIRONMENTAL NETWORK CORPORATION	\$20,210	\$20,210	\$20,193	\$0	99.91%
HARRINGTON GEOTECHNICAL ENGINEERING INC (Geotechnical Soils Investigation)	\$13,500	\$13,500	\$13,500	\$0	100.00%
PROVENCER, GEORGE (dba PROVO ENGINEERING)	\$720	\$720	\$720	\$0	100.00%
RMA GROUP (dba SITSCAN)	\$26,103	\$26,103	\$26,103	\$0	100.00%
XICOTENCATL ENRIQUE SALAZAR	\$20,100	\$20,100	\$20,100	\$0	100.00%
	\$322,315	\$92,678	\$92,660	\$0	28.75%
4.12 Utility Connection Fees (Local Permits)					
UNCOMMITTED	\$173,033	\$0	\$0	\$0	
AT&T	\$5,302	\$5,302	\$5,302	\$0	100.00%
CITY OF ANAHEIM - ELECTRICAL ENGINEERING DIV	\$2,756	\$2,756	\$2,756	\$0	100.00%
CROWN CASTLE INTERNATIONAL	\$6,455	\$6,455	\$6,455	\$0	100.00%
SOUTHERN CALIFORNIA GAS CO	\$2,445	\$2,445	\$2,445	\$0	100.00%
	\$189,991	\$16,958	\$16,958	\$0	8.93%
4.13 FF&E (Laboratory Tables and Chairs, other)					
UNCOMMITTED	\$198,722	\$0	\$0	\$0	
AMS.NET	\$14,485	\$14,485	\$14,485	\$14,485	100.00%
ARROW RESTAURANT EQUIPMENT	\$11,559	\$11,559	\$11,559	\$0	100.00%
CAROLINA BIOLOGICAL SUPPLY	\$18,896	\$18,896	\$1,581	\$0	8.37%
FISHER SCIENCE EDUCATION	\$33,320	\$33,320	\$33,320	\$0	100.00%
FLINN SCIENTIFIC INC	\$8,028	\$8,028	\$8,028	\$0	100.00%
SIERRA SCHOOL EQUIPMENT COMPANY	\$833,491	\$833,491	\$477,523	\$471,459	57.29%
VWR INTERNATIONAL LLC	\$9,486	\$9,486	\$9,486	\$0	100.00%
WW GRAINGER INC	\$1,932	\$1,932	\$1,881	\$0	97.32%
	\$1,129,919	\$931,197	\$557,863	\$485,944	49.37%
4.14 Legal Counsel					
UNCOMMITTED	\$94,996	\$0	\$0	\$0	
	\$94,996	\$0	\$0	\$0	0.00%

5. Contingency

5.01 Construction Contingency



Measure S Bond Program
Financial Report for February 2022
Budget vs Actuals by School and Budget Category with Vendor Detail

QSS Data thru 2/28/2022

	Budget	Contracted to Date	Expended to Date	Quarterly Expense Jan '22 - Mar '22	% Expended
UNCOMMITTED	\$1,263,968	\$0	\$0	\$0	
	\$1,263,968	\$0	\$0	\$0	0.00%
5.02 Project Contingency					
UNCOMMITTED	\$12,079,692	\$0	\$0	\$0	
	\$12,079,692	\$0	\$0	\$0	0.00%
Total 390-9520 Canyon HS Science Center (DSA 04-117300)	\$66,211,659	\$51,348,702	\$46,285,009	\$2,836,779	69.90%
390-9520 Canyon HS Unallocated Funds F21					
4. Construction Support Costs					
4.15 Miscellaneous Fees					
UNCOMMITTED	\$0	\$0	\$0	\$0	
OUSD COST OF INTEREST DISTRIBUTION	\$96,044	\$96,044	\$96,044	\$0	100.00%
	\$96,044	\$96,044	\$96,044	\$0	100.00%
5. Program Reserve					
5.03 Interest Earned - Reserve					
UNCOMMITTED	\$2,345,740	\$0	\$0	\$0	
	\$2,345,740	\$0	\$0	\$0	0.00%
Total 390-9520 Canyon HS Unallocated Funds F21	\$2,441,785	\$96,044	\$96,044	\$0	3.93%
390-0000 Canyon HS IP Surveillance Camera and Systems					
4. Construction Support Costs					
4.13 FF&E (Laboratory Tables and Chairs, other)					
UNCOMMITTED	\$0	\$0	\$0	\$0	
CDW GOVERNMENT INC	\$29,337	\$29,337	\$29,337	\$0	100.00%
DIGITAL NETWORKS GROUP INC (F/I IP Camera Software)	\$7,093	\$7,093	\$7,093	\$0	100.00%
INTER-PACIFIC INC	\$18,163	\$18,163	\$18,163	\$0	100.00%
	\$54,593	\$54,593	\$54,593	\$0	100.00%
Total 390-0000 Canyon HS IP Surveillance Camera and Systems	\$54,593	\$54,593	\$54,593	\$0	100.00%
390-9520 Canyon HS Interim Kitchen (DSA 04-118418)					
1. Design Cost					
1.01 Architect					
UNCOMMITTED	\$0	\$0	\$0	\$0	
GKKWORKS CANNON DESIGN	\$119,620	\$119,620	\$11,475	\$0	9.59%
	\$119,620	\$119,620	\$11,475	\$0	9.59%



Measure S Bond Program
Financial Report for February 2022
Budget vs Actuals by School and Budget Category with Vendor Detail

QSS Data thru 2/28/2022

	Budget	Contracted to Date	Expended to Date	Quarterly Expense Jan '22 - Mar '22	% Expended
2. Construction Cost					
2.01 Construction					
UNCOMMITTED	\$0	\$0	\$0	\$0	
SWINERTON BUILDERS	\$1,053,557	\$1,053,557	\$1,048,571	\$0	99.53%
	\$1,053,557	\$1,053,557	\$1,048,571	\$0	99.53%
2.02 OFCI and Other Construction					
UNCOMMITTED	\$10	\$0	\$0	\$0	
E.R.E.S. ENTERPRISES INC DBA ECONOMY RESTAURANT EQUIP	\$49,721	\$49,721	\$49,721	\$0	100.00%
THE DICKLER CORPORATION DBA CHEFS TOYS	\$109,449	\$109,449	\$109,449	\$0	100.00%
	\$159,180	\$159,170	\$159,170	\$0	99.99%
4. Construction Support Costs					
4.01 Rental					
UNCOMMITTED	\$0	\$0	\$0	\$0	
ELITE MODULAR LEASING & SALES INC	\$161,864	\$161,864	\$144,929	\$0	89.54%
	\$161,864	\$161,864	\$144,929	\$0	89.54%
4.05 DSA Review Fees					
UNCOMMITTED	\$0	\$0	\$0	\$0	
DIVISION OF STATE ARCHITECT	\$15,812	\$15,812	\$15,812	\$0	100.00%
	\$15,812	\$15,812	\$15,812	\$0	100.00%
4.07 DSA Inspection (IOR)					
UNCOMMITTED	\$0	\$0	\$0	\$0	
KNOWLAND CONSTRUCTION SERVICES	\$71,104	\$71,104	\$61,688	\$0	86.76%
	\$71,104	\$71,104	\$61,688	\$0	86.76%
4.08 DSA Construction Phase Testing (LOR)					
UNCOMMITTED	\$0	\$0	\$0	\$0	
AMERICAN ENGINEERING LABORATORIES INC	\$17,100	\$17,100	\$9,219	\$0	53.91%
	\$17,100	\$17,100	\$9,219	\$0	53.91%
4.11 Preliminary Testing (Hazmat, Topo, Geo, etc)					
UNCOMMITTED	\$0	\$0	\$0	\$0	
ENVIRONMENTAL NETWORK CORPORATION	\$4,245	\$4,245	\$3,910	\$0	92.10%
	\$4,245	\$4,245	\$3,910	\$0	92.10%
Total 390-9520 Canyon HS Interim Kitchen (DSA 04-118418)	\$1,602,483	\$1,602,473	\$1,454,775	\$0	90.78%
390-9520 Canyon HS Phase II (DSA 04-120410)					
1. Design Cost					
1.01 Architect					
UNCOMMITTED	\$0	\$0	\$0	\$0	



Measure S Bond Program
Financial Report for February 2022
Budget vs Actuals by School and Budget Category with Vendor Detail

QSS Data thru 2/28/2022

	Budget	Contracted to Date	Expended to Date	Quarterly Expense Jan '22 - Mar '22	% Expended
GKKWORKS CANNON DESIGN	\$663,500	\$663,500	\$486,495	\$7,590	73.32%
	\$663,500	\$663,500	\$486,495	\$7,590	73.32%
1.02 AE Design Contingency					
UNCOMMITTED	\$44,000	\$0	\$0	\$0	
GKKWORKS CANNON DESIGN	\$0	\$44,000	\$0	\$0	
	\$44,000	\$44,000	\$0	\$0	0.00%
3. Program and Construction Management					
3.01 Program Management Fees					
UNCOMMITTED	\$98,152	\$0	\$0	\$0	
CUMMING CONSTRUCTION MGMT INC	\$109,418	\$109,418	\$46,960	\$8,153	42.92%
	\$207,570	\$109,418	\$46,960	\$8,153	22.62%
3.02 Construction Management Fees					
UNCOMMITTED	\$1,750	\$0	\$0	\$0	
CORDOBA CORPORATION	\$422,127	\$422,127	\$54,829	\$8,161	12.99%
	\$423,877	\$422,127	\$54,829	\$8,161	12.94%
4. Construction Support Costs					
4.02 Title, Environmental, Stormwater Management					
UNCOMMITTED	\$0	\$0	\$0	\$0	
ENVIRONMENTAL AUDIT INC	\$7,590	\$7,590	\$0	\$0	0.00%
	\$7,590	\$7,590	\$0	\$0	0.00%
4.03 Commissioning					
UNCOMMITTED	\$0	\$0	\$0	\$0	
P2S ENGINEERING INC	\$4,329	\$4,329	\$3,060	\$1,260	70.69%
	\$4,329	\$4,329	\$3,060	\$1,260	70.69%
4.05 DSA Review Fees					
UNCOMMITTED	\$0	\$0	\$0	\$0	
DIVISION OF STATE ARCHITECT	\$57,640	\$57,640	\$57,640	\$0	100.00%
	\$57,640	\$57,640	\$57,640	\$0	100.00%
4.06 Postage, Printing & Advertising					
UNCOMMITTED	\$0	\$0	\$0	\$0	
AMERICAN REPROGRAPHICS CO LLC	\$7,500	\$7,500	\$0	\$0	0.00%
	\$7,500	\$7,500	\$0	\$0	0.00%
4.11 Preliminary Testing (Hazmat, Topo, Geo, etc)					
UNCOMMITTED	\$250,511	\$0	\$0	\$0	
ENVIRONMENTAL NETWORK CORPORATION	\$19,515	\$19,515	\$12,220	\$0	62.62%
XICOTENCATL ENRIQUE SALAZAR	\$3,825	\$3,825	\$3,825	\$0	100.00%
	\$273,851	\$23,340	\$16,045	\$0	5.86%



Measure S Bond Program
Financial Report for February 2022
Budget vs Actuals by School and Budget Category with Vendor Detail

QSS Data thru 2/28/2022

	Budget	Contracted to Date	Expended to Date	Quarterly Expense Jan '22 - Mar '22	% Expended
Total 390-9520 Canyon HS Phase II (DSA 04-120410)	\$1,689,857	\$1,339,444	\$665,028	\$25,164	39.35%
390-TBD Canyon HS Science Center Unallocated Funds F22					
5. Unallocated Bond Funds					
5.04 Unallocated Bond Funds					
UNCOMMITTED	\$703,502	\$0	\$0	\$0	
	\$703,502	\$0	\$0	\$0	0.00%
Total 390-TBD Canyon HS Science Center Unallocated Funds F22	\$703,502	\$0	\$0	\$0	0.00%
390-TBD Canyon HS Unallocated Funds F22					
5. Unallocated Bond Funds					
5.04 Unallocated Bond Funds					
UNCOMMITTED	\$1,737,907	\$0	\$0	\$0	
	\$1,737,907	\$0	\$0	\$0	0.00%
Total 390-TBD Canyon HS Unallocated Funds F22	\$1,737,907	\$0	\$0	\$0	0.00%
Canyon High School	\$74,441,785	\$54,441,256	\$48,555,449	\$2,861,943	65.23%
El Modena High School					
391-0000 El Modena HS IP Surveillance Camera and Systems					
4. Construction Support Costs					
4.13 FF&E (Laboratory Tables and Chairs, other)					
UNCOMMITTED	\$0	\$0	\$0	\$0	
CDW GOVERNMENT INC	\$39,388	\$39,388	\$39,388	\$0	100.00%
DIGITAL NETWORKS GROUP INC (F/I IP Camera Software)	\$11,719	\$11,719	\$11,719	\$0	100.00%
INTER-PACIFIC INC	\$30,073	\$30,073	\$30,073	\$0	100.00%
	\$81,179	\$81,179	\$81,179	\$0	100.00%
Total 391-0000 El Modena HS IP Surveillance Camera and Systems	\$81,179	\$81,179	\$81,179	\$0	100.00%
391-9520 El Modena HS Science Center (DSA 04-117098)					
1. Design Cost					
1.01 Architect					
UNCOMMITTED	\$0	\$0	\$0	\$0	
HARLEY ELLIS DEVEREAUX	\$2,503,304	\$2,503,304	\$2,430,615	\$12,318	97.10%
LIONAKIS	\$14,059	\$14,059	\$14,059	\$0	100.00%
	\$2,517,363	\$2,517,363	\$2,444,674	\$12,318	97.11%



Measure S Bond Program
Financial Report for February 2022
Budget vs Actuals by School and Budget Category with Vendor Detail

QSS Data thru 2/28/2022

	Budget	Contracted to Date	Expended to Date	Quarterly Expense Jan '22 - Mar '22	% Expended
2. Construction Cost					
2.01 Construction					
UNCOMMITTED	\$5	\$0	\$0	\$0	
ANGELES CONTRACTOR, INC	\$26,843,851	\$26,843,851	\$25,357,159	\$2,223,907	94.46%
	\$26,843,856	\$26,843,851	\$25,357,159	\$2,223,907	94.46%
2.02 OFCI and Other Construction					
UNCOMMITTED	\$7,670	\$0	\$0	\$0	
ACCO ENGINEERED SYSTEMS INC	\$355,544	\$355,544	\$355,544	\$0	100.00%
AMERICAN REPROGRAPHICS CO LLC	\$1,026	\$1,026	\$0	\$0	0.00%
ANIXTER	\$5,092	\$5,092	\$0	\$0	0.00%
ARROW RESTAURANT EQUIPMENT	\$14,232	\$14,232	\$14,213	\$0	99.87%
CAROLINA BIOLOGICAL SUPPLY	\$24,213	\$24,213	\$0	\$0	0.00%
DEVELOPMENT GROUP INC	\$52,939	\$52,939	\$52,939	\$0	100.00%
FAIR PLAY SCOREBOARDS	\$17,694	\$17,694	\$17,694	\$0	100.00%
FISHER SCIENCE EDUCATION	\$26,188	\$26,188	\$23,852	\$0	91.08%
FLINN SCIENTIFIC INC	\$12,364	\$12,364	\$12,364	\$0	100.00%
PROFESSIONAL TURF SPECIALTIES	\$23,460	\$23,460	\$23,460	\$0	100.00%
WW GRAINGER INC	\$6,039	\$6,039	\$4,081	\$0	67.58%
	\$546,461	\$538,791	\$504,148	\$0	92.26%
3. Program and Construction Management					
3.01 Program Management Fees					
UNCOMMITTED	\$7,817	\$0	\$0	\$0	
CUMMING CONSTRUCTION MGMT INC	\$1,420,299	\$1,420,299	\$1,241,247	\$175,987	87.39%
	\$1,428,116	\$1,420,299	\$1,241,247	\$175,987	86.92%
3.02 Construction Management Fees					
UNCOMMITTED	\$3,200	\$0	\$0	\$0	
ARCADIS U.S. INC	\$2,348,909	\$2,348,909	\$2,251,362	\$0	95.85%
CORDOBA CORPORATION	\$90,336	\$90,336	\$90,336	\$0	100.00%
	\$2,442,445	\$2,439,245	\$2,341,698	\$0	95.88%
4.02 Title, Environmental, Stormwater Management					
UNCOMMITTED	\$17,669	\$0	\$0	\$0	
CHICAGO TITLE COMPANY	\$1,500	\$1,500	\$1,500	\$0	100.00%
CITY OF ORANGE (PUBLIC WORKS)	\$71	\$71	\$71	\$0	100.00%
CITY OF ORANGE (WATER DIVISION)	\$16,048	\$16,048	\$10,942	\$0	68.18%
ENVIRONMENTAL AUDIT INC	\$10,950	\$10,950	\$8,548	\$0	78.06%
OUSD COST OF INTEREST DISTRIBUTION	\$1	\$1	\$1	\$0	100.00%
	\$46,239	\$28,570	\$21,061	\$0	45.55%
4.03 Commissioning					



Measure S Bond Program
Financial Report for February 2022
Budget vs Actuals by School and Budget Category with Vendor Detail

QSS Data thru 2/28/2022

	Budget	Contracted to Date	Expended to Date	Quarterly Expense Jan '22 - Mar '22	% Expended
UNCOMMITTED	\$6,112	\$0	\$0	\$0	
P2S ENGINEERING INC	\$30,558	\$30,558	\$29,046	\$1,446	95.05%
	\$36,670	\$30,558	\$29,046	\$1,446	79.21%
4.05 DSA Review Fees					
UNCOMMITTED	\$0	\$0	\$0	\$0	
DIVISION OF STATE ARCHITECT	\$306,338	\$306,338	\$306,338	\$0	100.00%
	\$306,338	\$306,338	\$306,338	\$0	100.00%
4.06 Postage, Printing & Advertising					
UNCOMMITTED	\$9,947	\$0	\$0	\$0	
AMERICAN REPROGRAPHICS CO LLC	\$20,110	\$20,110	\$19,155	\$0	95.25%
SOUTHERN CALIFORNIA NEWS GROUP	\$2,024	\$2,024	\$2,024	\$0	100.00%
	\$32,081	\$22,134	\$21,179	\$0	66.02%
4.07 DSA Inspection (IOR)					
UNCOMMITTED	\$0	\$0	\$0	\$0	
BPI INSPECTION SERVICE	\$729,569	\$729,569	\$645,794	\$71,980	88.52%
	\$729,569	\$729,569	\$645,794	\$71,980	88.52%
4.08 DSA Construction Phase Testing (LOR)					
UNCOMMITTED	\$1	\$0	\$0	\$0	
KOURY ENGINEERING & TESTING INC (Geotechnical Engineering)	\$782,316	\$782,316	\$782,316	\$13,370	100.00%
	\$782,317	\$782,316	\$782,316	\$13,370	100.00%
4.09 Relocation					
UNCOMMITTED	\$16,319	\$0	\$0	\$0	
Beltmann Group, Inc.	\$7,080	\$7,080	\$850	\$0	12.01%
ULINE INC	\$1,601	\$1,601	\$813	\$112	50.79%
	\$25,000	\$8,681	\$1,663	\$112	6.65%
4.11 Preliminary Testing (Hazmat, Topo, Geo, etc)					
UNCOMMITTED	\$13,619	\$0	\$0	\$0	
ALLEGIAN FIRE PROTECTION INC	\$525	\$525	\$525	\$0	100.00%
CALIFORNIA GEOLOGICAL SURVEY (Geology and Seismology Review)	\$3,600	\$3,600	\$3,600	\$0	100.00%
ENVIRONMENTAL NETWORK CORPORATION	\$6,000	\$6,000	\$5,410	\$0	90.17%
HARLEY ELLIS DEVEREAUX	\$14,908	\$14,908	\$14,908	\$0	100.00%
NINYO & MOORE	\$29,981	\$29,981	\$29,771	\$0	99.30%
PCA ARBORISTS & CONSULTANTS INC	\$1,569	\$1,569	\$1,569	\$0	100.00%
THE CONVERSE PROFESSIONAL GROUP (Soils Investigation)	\$30,640	\$30,640	\$30,640	\$0	100.00%
	\$100,842	\$87,223	\$86,423	\$0	85.70%
4.12 Utility Connection Fees (Local Permits)					
UNCOMMITTED	\$76,261	\$0	\$0	\$0	
DIVISION OF STATE ARCHITECT	\$0	\$0	\$0	\$0	
SOUTHERN CALIFORNIA EDISON	\$3,665	\$3,665	\$3,665	\$0	100.00%



Measure S Bond Program
Financial Report for February 2022
Budget vs Actuals by School and Budget Category with Vendor Detail

QSS Data thru 2/28/2022

	Budget	Contracted to Date	Expended to Date	Quarterly Expense Jan '22 - Mar '22	% Expended
STATE WATER RESOURCES CONTROL BOARD (SWRCB)	\$993	\$993	\$993	\$0	100.00%
	\$80,919	\$4,658	\$4,658	\$0	5.76%
4.13 FF&E (Laboratory Tables and Chairs, other)					
UNCOMMITTED	\$21,007	\$0	\$0	\$0	
AMS.NET	\$3,754	\$3,754	\$3,754	\$3,754	100.00%
CDW GOVERNMENT INC	\$64,325	\$74,662	\$64,325	\$64,325	100.00%
FISHER SCIENCE EDUCATION	\$6,494	\$6,494	\$0	\$0	0.00%
FLINN SCIENTIFIC INC	\$2,081	\$2,081	\$2,081	\$2,081	100.00%
INTER-PACIFIC INC	\$9,256	\$9,256	\$9,256	\$0	100.00%
SIERRA SCHOOL EQUIPMENT COMPANY	\$495,446	\$495,446	\$349,199	\$6,900	70.48%
TURTLE STORAGE dba AMERICAN BICYCLE CO	\$6,871	\$6,871	\$6,314	\$0	91.89%
VWR INTERNATIONAL LLC	\$47,922	\$52,714	\$47,922	\$0	100.00%
	\$657,156	\$651,278	\$482,850	\$77,060	73.48%
5. Contingency					
5.01 Construction Contingency					
UNCOMMITTED	\$955,944	\$0	\$0	\$0	
	\$955,944	\$0	\$0	\$0	0.00%
5.02 Project Contingency					
UNCOMMITTED	\$1,644,520	\$0	\$0	\$0	
ARCADIS U.S. INC	\$0	\$0	\$0	\$0	
	\$1,644,520	\$0	\$0	\$0	0.00%
Total 391-9520 El Modena HS Science Center (DSA 04-117098)	\$39,175,836	\$36,410,874	\$34,270,255	\$2,576,180	87.48%
391-9520 El Modena HS Phase II (DSA 04-120032)					
1. Design Cost					
1.01 Architect					
UNCOMMITTED	\$0	\$0	\$0	\$0	
HARLEY ELLIS DEVEREAUX	\$1,918,220	\$1,918,220	\$1,357,325	\$5,594	70.76%
	\$1,918,220	\$1,918,220	\$1,357,325	\$5,594	70.76%
3. Program and Construction Management					
3.01 Program Management Fees					
UNCOMMITTED	\$0	\$0	\$0	\$0	
CUMMING CONSTRUCTION MGMT INC	\$199,612	\$199,612	\$95,456	\$11,702	47.82%
	\$199,612	\$199,612	\$95,456	\$11,702	47.82%
3.02 Construction Management Fees					
UNCOMMITTED	\$1,050	\$0	\$0	\$0	
CORDOBA CORPORATION	\$515,353	\$515,353	\$80,898	\$8,087	15.70%



Measure S Bond Program
Financial Report for February 2022
Budget vs Actuals by School and Budget Category with Vendor Detail

QSS Data thru 2/28/2022

	Budget	Contracted to Date	Expended to Date	Quarterly Expense Jan '22 - Mar '22	% Expended
	\$516,403	\$515,353	\$80,898	\$8,087	15.67%
4. Construction Support Costs					
4.02 Title, Environmental, Stormwater Management					
UNCOMMITTED	\$0	\$0	\$0	\$0	
ENVIRONMENTAL AUDIT INC	\$7,590	\$7,590	\$0	\$0	0.00%
	\$7,590	\$7,590	\$0	\$0	0.00%
4.03 Commissioning					
UNCOMMITTED	\$0	\$0	\$0	\$0	
P2S ENGINEERING INC	\$11,890	\$11,890	\$5,550	\$2,220	46.68%
	\$11,890	\$11,890	\$5,550	\$2,220	46.68%
4.05 DSA Review Fees					
UNCOMMITTED	\$0	\$0	\$0	\$0	
DIVISION OF STATE ARCHITECT	\$212,750	\$212,750	\$212,750	\$0	100.00%
	\$212,750	\$212,750	\$212,750	\$0	100.00%
4.06 Postage, Printing & Advertising					
UNCOMMITTED	\$0	\$0	\$0	\$0	
AMERICAN REPROGRAPHICS CO LLC	\$8,000	\$8,000	\$0	\$0	0.00%
	\$8,000	\$8,000	\$0	\$0	0.00%
4.09 Relocation					
UNCOMMITTED	\$0	\$0	\$0	\$0	
Beltmann Group, Inc.	\$3,500	\$3,500	\$0	\$0	0.00%
	\$3,500	\$3,500	\$0	\$0	0.00%
4.11 Preliminary Testing (Hazmat, Topo, Geo, etc)					
UNCOMMITTED	\$11,500	\$0	\$0	\$0	
ARMSTRONG & BROOKS CONSULTING ENG	\$20,000	\$20,000	\$4,940	\$0	24.70%
GROUP DELTA CONSULTANTS INC	\$17,100	\$17,100	\$10,004	\$0	58.50%
KOURY ENGINEERING & TESTING INC (Geotechnical Engineering)	\$22,350	\$22,350	\$22,350	\$0	100.00%
	\$70,950	\$59,450	\$37,294	\$0	52.56%
Total 391-9520 El Modena HS Phase II (DSA 04-120032)	\$2,948,915	\$2,936,365	\$1,789,273	\$27,604	60.68%
391-9520 El Modena HS Quad Shade Structures (DSA 04-119124)					
1. Design Cost					
1.01 Architect					
UNCOMMITTED	\$0	\$0	\$0	\$0	
HARLEY ELLIS DEVEREAUX	\$79,340	\$79,340	\$0	\$0	0.00%
	\$79,340	\$79,340	\$0	\$0	0.00%
4.05 DSA Review Fees					



Measure S Bond Program
Financial Report for February 2022
Budget vs Actuals by School and Budget Category with Vendor Detail

QSS Data thru 2/28/2022

	Budget	Contracted to Date	Expended to Date	Quarterly Expense Jan '22 - Mar '22	% Expended
UNCOMMITTED	\$0	\$0	\$0	\$0	
DIVISION OF STATE ARCHITECT	\$9,650	\$9,650	\$9,650	\$0	100.00%
	\$9,650	\$9,650	\$9,650	\$0	100.00%
4.06 Postage, Printing & Advertising					
UNCOMMITTED	\$0	\$0	\$0	\$0	
AMERICAN REPROGRAPHICS CO LLC	\$86	\$86	\$86	\$0	100.00%
	\$86	\$86	\$86	\$0	100.00%
Total 391-9520 El Modena HS Quad Shade Structures (DSA 04-119124)	\$89,076	\$89,076	\$9,736	\$0	10.93%
391-TBD El Modena HS Science Center Unallocated Funds F22					
5. Unallocated Bond Funds					
5.04 Unallocated Bond Funds					
UNCOMMITTED	\$1,138,078	\$0	\$0	\$0	
	\$1,138,078	\$0	\$0	\$0	0.00%
Total 391-TBD El Modena HS Science Center Unallocated Funds F22	\$1,138,078	\$0	\$0	\$0	0.00%
391-9520 El Modena HS Unallocated Funds F21					
4. Construction Support Costs					
4.15 Miscellaneous Fees					
UNCOMMITTED	\$0	\$0	\$0	\$0	
OUSD COST OF INTEREST DISTRIBUTION	\$53,330	\$53,330	\$53,330	\$0	100.00%
	\$53,330	\$53,330	\$53,330	\$0	100.00%
5. Program Reserve					
5.03 Interest Earned - Reserve					
UNCOMMITTED	\$77,419	\$0	\$0	\$0	
	\$77,419	\$0	\$0	\$0	0.00%
Total 391-9520 El Modena HS Unallocated Funds F21	\$130,749	\$53,330	\$53,330	\$0	40.79%
391-TBD El Modena HS Unallocated Funds F22					
5. Unallocated Bond Funds					
5.04 Unallocated Bond Funds					
UNCOMMITTED	\$30,017,362	\$0	\$0	\$0	
	\$30,017,362	\$0	\$0	\$0	0.00%
Total 391-TBD El Modena HS Unallocated Funds F22	\$30,017,362	\$0	\$0	\$0	0.00%



Measure S Bond Program
Financial Report for February 2022
Budget vs Actuals by School and Budget Category with Vendor Detail

QSS Data thru 2/28/2022

	Budget	Contracted to Date	Expended to Date	Quarterly Expense Jan '22 - Mar '22	% Expended
El Modena High School	\$73,581,196	\$39,570,824	\$36,203,774	\$2,603,783	49.20%
Orange High School					
392-0000 Orange HS IP Surveillance Camera and Systems					
4. Construction Support Costs					
4.13 FF&E (Laboratory Tables and Chairs, other)					
UNCOMMITTED	\$0	\$0	\$0	\$0	
CDW GOVERNMENT INC	\$53,662	\$53,662	\$53,662	\$0	100.00%
DIGITAL NETWORKS GROUP INC (F/I IP Camera Software)	\$13,569	\$13,569	\$13,569	\$0	100.00%
INTER-PACIFIC INC	\$34,837	\$34,837	\$34,837	\$0	100.00%
	\$102,068	\$102,068	\$102,068	\$0	100.00%
Total 392-0000 Orange HS IP Surveillance Camera and Systems	\$102,068	\$102,068	\$102,068	\$0	100.00%
392-9520 Orange HS Science Bldg (DSA 04-116859)					
1. Design Cost					
1.01 Architect					
UNCOMMITTED	\$151,933	\$0	\$0	\$0	
LIONAKIS	\$1,854,196	\$1,854,196	\$1,823,594	\$0	98.35%
	\$2,006,129	\$1,854,196	\$1,823,594	\$0	90.90%
2. Construction Cost					
2.01 Construction					
UNCOMMITTED	\$1	\$0	\$0	\$0	
GIANNELLI ELECTRIC INC	\$14,878	\$14,878	\$14,878	\$0	100.00%
INTEGRATED DEMOLITION AND REMEDIATION (Abatement and Demolition)	\$44,800	\$44,800	\$44,800	\$0	100.00%
J & A FENCE (Custodial Storage Fencing)	\$0	\$0	\$0	\$0	
KYA SERVICES LLC (Install Carpet)	\$0	\$0	\$0	\$0	
OLESH, KEITH (Termite Services)	\$0	\$0	\$0	\$0	
PINNER CONSTRUCTION	\$27,190,987	\$27,190,987	\$27,190,987	\$0	100.00%
SOUTHERN CALIFORNIA NEWS GROUP	\$0	\$0	\$0	\$0	
TIME & ALARM SYSTEMS	\$3,100	\$3,100	\$3,100	\$0	100.00%
UNIVERSAL ASPHALT CO (Remove and Patch Asphalt)	\$6,830	\$6,830	\$6,830	\$0	100.00%
	\$27,260,596	\$27,260,595	\$27,260,595	\$0	100.00%
2.02 OFCI and Other Construction					
UNCOMMITTED	\$59,552	\$0	\$0	\$0	
ACCO ENGINEERED SYSTEMS INC	\$62,883	\$62,883	\$62,883	\$0	100.00%
AMERICAN REPROGRAPHICS CO LLC	\$10,126	\$10,126	\$0	\$0	0.00%
ARROW RESTAURANT EQUIPMENT	\$13,556	\$13,556	\$13,432	\$0	99.08%
BLUE RIBBON TROPHY	\$1,067	\$1,067	\$0	\$0	0.00%



Measure S Bond Program
Financial Report for February 2022
Budget vs Actuals by School and Budget Category with Vendor Detail

QSS Data thru 2/28/2022

	Budget	Contracted to Date	Expended to Date	Quarterly Expense Jan '22 - Mar '22	% Expended
CAROLINA BIOLOGICAL SUPPLY	\$16,559	\$16,559	\$16,480	\$0	99.52%
CITY OF ORANGE (PUBLIC WORKS)	\$2,000	\$2,000	\$2,000	\$0	100.00%
DEVELOPMENT GROUP INC	\$37,866	\$37,866	\$37,866	\$0	100.00%
FISHER SCIENCE EDUCATION	\$25,736	\$25,736	\$24,863	\$0	96.61%
FLINN SCIENTIFIC INC	\$10,263	\$10,263	\$10,263	\$0	100.00%
GIANNELLI ELECTRIC INC	\$24,684	\$24,684	\$24,684	\$0	100.00%
GRUETT TREE CO INC (Removal of Trees)	\$7,625	\$7,625	\$7,625	\$0	100.00%
J & A FENCE (Custodial Storage Fencing)	\$6,885	\$6,885	\$6,885	\$0	100.00%
KYA SERVICES LLC (Install Carpet)	\$0	\$0	\$0	\$0	
OLESH, KEITH (Termite Services)	\$1,500	\$1,500	\$1,500	\$0	100.00%
SOUTHERN CALIFORNIA NEWS GROUP	\$0	\$0	\$0	\$0	
TRIMARK RAYGAL LLC	\$0	\$0	\$0	\$0	
VORTEX INDUSTRIES, INC.	\$6,804	\$6,804	\$6,804	\$0	100.00%
WW GRAINGER INC	\$2,292	\$2,292	\$2,292	\$0	100.00%
	\$289,399	\$229,846	\$217,576	\$0	75.18%

3. Program and Construction Management

3.01 Program Management Fees

UNCOMMITTED	\$531,596	\$0	\$0	\$0	
CUMMING CONSTRUCTION MGMT INC	\$1,010,155	\$1,062,336	\$979,395	\$0	96.95%
	\$1,541,750	\$1,062,336	\$979,395	\$0	63.52%

3.02 Construction Management Fees

UNCOMMITTED	\$59,981	\$0	\$0	\$0	
BALFOUR BEATTY CONSTRUCTION	\$1,757,253	\$1,757,254	\$1,755,159	\$0	99.88%
CORDOBA CORPORATION	\$86,549	\$86,549	\$86,434	\$0	99.87%
	\$1,903,783	\$1,843,803	\$1,841,593	\$0	96.73%

4.02 Title, Environmental, Stormwater Management

UNCOMMITTED	\$34,796	\$0	\$0	\$0	
CHICAGO TITLE COMPANY	\$1,500	\$1,500	\$1,500	\$0	100.00%
OUSD COST OF INTEREST DISTRIBUTION	\$1	\$1	\$1	\$0	100.00%
PLACEWORKS INC	\$52,231	\$52,231	\$52,231	\$0	100.00%
STATE WATER RESOURCES CONTROL BOARD (SWRCB)	\$726	\$726	\$726	\$0	100.00%
	\$89,254	\$54,458	\$54,458	\$0	61.01%

4.03 Commissioning

UNCOMMITTED	\$6,117	\$0	\$0	\$0	
P2S ENGINEERING INC	\$30,585	\$30,585	\$30,170	\$0	98.64%
	\$36,702	\$30,585	\$30,170	\$0	82.20%

4.05 DSA Review Fees

UNCOMMITTED	\$28,992	\$0	\$0	\$0	
-------------	----------	-----	-----	-----	--



Measure S Bond Program
Financial Report for February 2022
Budget vs Actuals by School and Budget Category with Vendor Detail

QSS Data thru 2/28/2022

	Budget	Contracted to Date	Expended to Date	Quarterly Expense Jan '22 - Mar '22	% Expended
DIVISION OF STATE ARCHITECT	\$342,871	\$342,871	\$342,871	\$0	100.00%
OUSD REVOLVING CASH	\$500	\$500	\$500	\$0	100.00%
	\$372,364	\$343,371	\$343,371	\$0	92.21%
4.06 Postage, Printing & Advertising					
UNCOMMITTED	\$36,374	\$0	\$0	\$0	
AMERICAN REPROGRAPHICS CO LLC	\$11,734	\$11,734	\$8,734	\$0	74.43%
SOUTHERN CALIFORNIA NEWS GROUP	\$8,518	\$8,518	\$8,518	\$0	100.00%
	\$56,626	\$20,252	\$17,252	\$0	30.47%
4.07 DSA Inspection (IOR)					
UNCOMMITTED	\$145,585	\$0	\$0	\$0	
KNOWLAND CONSTRUCTION SERVICES	\$321,507	\$321,507	\$286,404	\$0	89.08%
	\$467,092	\$321,507	\$286,404	\$0	61.32%
4.08 DSA Construction Phase Testing (LOR)					
UNCOMMITTED	\$125,025	\$0	\$0	\$0	
NINYO & MOORE	\$327,624	\$327,624	\$227,848	\$0	69.55%
	\$452,649	\$327,624	\$227,848	\$0	50.34%
4.09 Relocation					
UNCOMMITTED	\$15,706	\$0	\$0	\$0	
Beltmann Group, Inc.	\$6,229	\$6,229	\$4,876	\$0	78.27%
ULINE INC	\$3,065	\$3,065	\$3,065	\$0	100.00%
	\$25,000	\$9,294	\$7,941	\$0	31.76%
4.10 Labor Compliance					
UNCOMMITTED	\$40,951	\$0	\$0	\$0	
	\$40,951	\$0	\$0	\$0	0.00%
4.11 Preliminary Testing (Hazmat, Topo, Geo, etc)					
UNCOMMITTED	\$198,437	\$0	\$0	\$0	
CALIFORNIA GEOLOGICAL SURVEY (Geology and Seismology Review)	\$3,600	\$3,600	\$3,600	\$0	100.00%
ENVIRONMENTAL NETWORK CORPORATION	\$4,925	\$4,925	\$2,590	\$0	52.59%
KOURY ENGINEERING & TESTING INC (Geotechnical Engineering)	\$13,300	\$13,300	\$13,300	\$0	100.00%
PENCO ENGINEERING INC (Topographical Survey Services)	\$42,350	\$42,350	\$41,070	\$0	96.98%
RMA GROUP (dba SITESCAN)	\$49,533	\$49,533	\$49,533	\$0	100.00%
	\$312,145	\$113,708	\$110,093	\$0	35.27%
4.12 Utility Connection Fees (Local Permits)					
UNCOMMITTED	\$151,714	\$0	\$0	\$0	
CITY OF ORANGE (PUBLIC WORKS)	\$2,500	\$2,500	\$2,500	\$0	100.00%
SOUTHERN CALIFORNIA EDISON	\$6,912	\$6,912	\$6,912	\$0	100.00%
SOUTHERN CALIFORNIA GAS CO	\$2,124	\$2,124	\$2,124	\$0	100.00%
STATE WATER RESOURCES CONTROL BOARD (SWRCB)	\$553	\$553	\$553	\$0	100.00%
	\$163,803	\$12,089	\$12,089	\$0	7.38%



Measure S Bond Program
Financial Report for February 2022
Budget vs Actuals by School and Budget Category with Vendor Detail

QSS Data thru 2/28/2022

	Budget	Contracted to Date	Expended to Date	Quarterly Expense Jan '22 - Mar '22	% Expended
4.13 FF&E (Laboratory Tables and Chairs, other)					
UNCOMMITTED	\$10,748	\$0	\$0	\$0	
CDW GOVERNMENT INC	\$59,662	\$59,662	\$59,658	\$0	99.99%
CONEXWEST	\$9,466	\$9,466	\$9,419	\$0	99.51%
CP PRODUCTS INC	\$4,834	\$4,834	\$4,834	\$0	100.00%
DEVELOPMENT GROUP INC	\$0	\$0	\$0	\$0	
FISHER SCIENCE EDUCATION	\$0	\$0	\$0	\$0	
GORM	\$11,423	\$11,423	\$11,415	\$0	99.93%
HILLYARD INC	\$32,572	\$32,572	\$32,572	\$0	100.00%
INTER-PACIFIC INC	\$7,904	\$7,904	\$7,904	\$0	100.00%
PSI DBA WATER VISIONS INC	\$8,527	\$8,527	\$8,527	\$0	100.00%
SIERRA SCHOOL EQUIPMENT COMPANY	\$464,248	\$464,248	\$464,248	\$0	100.00%
TURTLE STORAGE dba AMERICAN BICYCLE CO	\$6,871	\$6,871	\$6,537	\$0	95.14%
VORTEX INDUSTRIES, INC.	\$0	\$0	\$0	\$0	
VWR INTERNATIONAL LLC	\$34,314	\$34,314	\$34,314	\$0	100.00%
	\$650,570	\$639,821	\$639,428	\$0	98.29%
4.14 Legal Counsel					
UNCOMMITTED	\$81,902	\$0	\$0	\$0	
	\$81,902	\$0	\$0	\$0	0.00%
5. Contingency					
5.01 Construction Contingency					
UNCOMMITTED	\$1,415,413	\$0	\$0	\$0	
	\$1,415,413	\$0	\$0	\$0	0.00%
5.02 Project Contingency					
UNCOMMITTED	\$4,297,657	\$0	\$0	\$0	
	\$4,297,657	\$0	\$0	\$0	0.00%
Total 392-9520 Orange HS Science Bldg (DSA 04-116859)	\$41,463,785	\$34,123,485	\$33,851,806	\$0	81.64%
392-9520 Orange HS Shade Structure (DSA 04-118351)					
1. Design Cost					
1.01 Architect					
UNCOMMITTED	\$0	\$0	\$0	\$0	
LIONAKIS	\$17,317	\$17,317	\$17,317	\$0	100.00%
	\$17,317	\$17,317	\$17,317	\$0	100.00%
2. Construction Cost					
2.01 Construction					
UNCOMMITTED	\$0	\$0	\$0	\$0	



Measure S Bond Program
Financial Report for February 2022
Budget vs Actuals by School and Budget Category with Vendor Detail

QSS Data thru 2/28/2022

	Budget	Contracted to Date	Expended to Date	Quarterly Expense Jan '22 - Mar '22	% Expended
PINNER CONSTRUCTION	\$113,500	\$113,500	\$113,500	\$0	100.00%
	\$113,500	\$113,500	\$113,500	\$0	100.00%
3. Program and Construction Management					
3.01 Program Management Fees					
UNCOMMITTED	\$0	\$0	\$0	\$0	
CUMMING CONSTRUCTION MGMT INC	\$1,838	\$1,838	\$1,838	\$0	100.00%
	\$1,838	\$1,838	\$1,838	\$0	100.00%
3.02 Construction Management Fees					
UNCOMMITTED	\$0	\$0	\$0	\$0	
BALFOUR BEATTY CONSTRUCTION	\$5,956	\$5,956	\$5,956	\$0	100.00%
	\$5,956	\$5,956	\$5,956	\$0	100.00%
4.05 DSA Review Fees					
UNCOMMITTED	\$0	\$0	\$0	\$0	
DIVISION OF STATE ARCHITECT	\$1,873	\$1,873	\$1,873	\$0	100.00%
	\$1,873	\$1,873	\$1,873	\$0	100.00%
4.07 DSA Inspection (IOR)					
UNCOMMITTED	\$0	\$0	\$0	\$0	
KNOWLAND CONSTRUCTION SERVICES	\$1,740	\$1,740	\$1,740	\$0	100.00%
	\$1,740	\$1,740	\$1,740	\$0	100.00%
4.08 DSA Construction Phase Testing (LOR)					
UNCOMMITTED	\$0	\$0	\$0	\$0	
NINYO & MOORE	\$7,408	\$7,408	\$7,408	\$0	100.00%
	\$7,408	\$7,408	\$7,408	\$0	100.00%
Total 392-9520 Orange HS Shade Structure (DSA 04-118351)	\$149,631	\$149,631	\$149,631	\$0	100.00%
392-9520 Orange HS Site Improvements (DSA 04-116673)					
1. Design Cost					
1.01 Architect					
UNCOMMITTED	\$0	\$0	\$0	\$0	
LIONAKIS	\$450,189	\$450,189	\$446,286	\$0	99.13%
SILVER CREEK INDUSTRIES INC (Engineering for Warming Kitchen Relocatable Building)	\$29,682	\$29,682	\$29,682	\$0	100.00%
	\$479,871	\$479,871	\$475,968	\$0	99.19%
2. Construction Cost					
2.01 Construction					
UNCOMMITTED	\$0	\$0	\$0	\$0	
KYA SERVICES LLC (Install Carpet)	\$20,824	\$20,824	\$9,564	\$0	45.93%



Measure S Bond Program
Financial Report for February 2022
Budget vs Actuals by School and Budget Category with Vendor Detail

QSS Data thru 2/28/2022

	Budget	Contracted to Date	Expended to Date	Quarterly Expense Jan '22 - Mar '22	% Expended
SWINERTON BUILDERS	\$6,556,428	\$6,556,428	\$6,556,428	\$0	100.00%
TRIMARK RAYGAL LLC	\$89,860	\$89,860	\$89,860	\$0	100.00%
	\$6,667,112	\$6,667,112	\$6,655,852	\$0	99.83%
2.02 OFCI and Other Construction					
UNCOMMITTED	\$0	\$0	\$0	\$0	
ACCO ENGINEERED SYSTEMS INC	\$209,074	\$209,074	\$209,074	\$0	100.00%
	\$209,074	\$209,074	\$209,074	\$0	100.00%
3. Program and Construction Management					
3.01 Program Management Fees					
UNCOMMITTED	\$0	\$0	\$0	\$0	
BALFOUR BEATTY CONSTRUCTION	\$0	\$0	\$0	\$0	
CUMMING CONSTRUCTION MGMT INC	\$115,479	\$115,479	\$115,479	\$0	100.00%
	\$115,479	\$115,479	\$115,479	\$0	100.00%
3.02 Construction Management Fees					
UNCOMMITTED	\$0	\$0	\$0	\$0	
BALFOUR BEATTY CONSTRUCTION	\$296,554	\$296,554	\$296,554	\$0	100.00%
	\$296,554	\$296,554	\$296,554	\$0	100.00%
4. Construction Support Costs					
4.02 Title, Environmental, Stormwater Management					
UNCOMMITTED	\$0	\$0	\$0	\$0	
ORANGE COUNTY HEALTH CARE AGENCY	\$1,470	\$1,470	\$1,470	\$0	100.00%
	\$1,470	\$1,470	\$1,470	\$0	100.00%
4.03 Commissioning					
UNCOMMITTED	\$0	\$0	\$0	\$0	
P2S ENGINEERING INC	\$4,755	\$4,755	\$4,667	\$0	98.15%
	\$4,755	\$4,755	\$4,667	\$0	98.15%
4.05 DSA Review Fees					
UNCOMMITTED	\$3,853	\$0	\$0	\$0	
DIVISION OF STATE ARCHITECT	\$94,585	\$94,585	\$94,585	\$0	100.00%
	\$98,438	\$94,585	\$94,585	\$0	96.09%
4.06 Postage, Printing & Advertising					
UNCOMMITTED	\$1	\$0	\$0	\$0	
AMERICAN REPROGRAPHICS CO LLC	\$7,630	\$7,630	\$7,630	\$0	100.00%
SOUTHERN CALIFORNIA NEWS GROUP	\$1,264	\$1,264	\$1,264	\$0	100.00%
	\$8,895	\$8,894	\$8,894	\$0	99.99%
4.07 DSA Inspection (IOR)					
UNCOMMITTED	\$0	\$0	\$0	\$0	
KNOWLAND CONSTRUCTION SERVICES	\$104,480	\$104,480	\$96,985	\$0	92.83%



Measure S Bond Program
Financial Report for February 2022
Budget vs Actuals by School and Budget Category with Vendor Detail

QSS Data thru 2/28/2022

	Budget	Contracted to Date	Expended to Date	Quarterly Expense Jan '22 - Mar '22	% Expended
4.08 DSA Construction Phase Testing (LOR)	\$104,480	\$104,480	\$96,985	\$0	92.83%
UNCOMMITTED	\$0	\$0	\$0	\$0	
NINYO & MOORE	\$113,255	\$113,255	\$112,544	\$0	99.37%
	\$113,255	\$113,255	\$112,544	\$0	99.37%
4.11 Preliminary Testing (Hazmat, Topo, Geo, etc)					
UNCOMMITTED	\$0	\$0	\$0	\$0	
ENVIRONMENTAL NETWORK CORPORATION	\$9,100	\$9,100	\$9,012	\$0	99.03%
	\$9,100	\$9,100	\$9,012	\$0	99.03%
Total 392-9520 Orange HS Site Improvements (DSA 04-116673)	\$8,108,482	\$8,104,629	\$8,081,083	\$0	99.66%
392-9520 Orange HS Phase II (DSA 04-120151)					
1. Design Cost					
1.01 Architect					
UNCOMMITTED	\$121,050	\$0	\$0	\$0	
LIONAKIS	\$1,409,450	\$1,409,450	\$984,603	\$8,009	69.86%
	\$1,530,500	\$1,409,450	\$984,603	\$8,009	64.33%
2. Construction Cost					
2.00 Other Construction - Swing Space					
UNCOMMITTED	\$384	\$0	\$0	\$0	
DAHLBERG, KENT & AMY dba NEW DIMENSION	\$99,066	\$99,066	\$76,760	\$10,977	77.48%
	\$99,450	\$99,066	\$76,760	\$10,977	77.18%
3. Program and Construction Management					
3.01 Program Management Fees					
UNCOMMITTED	\$1	\$0	\$0	\$0	
CUMMING CONSTRUCTION MGMT INC	\$201,328	\$201,328	\$98,859	\$16,204	49.10%
	\$201,329	\$201,328	\$98,859	\$16,204	49.10%
3.02 Construction Management Fees					
UNCOMMITTED	\$2,100	\$0	\$0	\$0	
CORDOBA CORPORATION	\$511,365	\$511,365	\$74,566	\$8,161	14.58%
	\$513,465	\$511,365	\$74,566	\$8,161	14.52%
4. Construction Support Costs					
4.02 Title, Environmental, Stormwater Management					
UNCOMMITTED	\$0	\$0	\$0	\$0	
CITY OF ORANGE (PUBLIC WORKS)	\$3,000	\$3,000	\$3,000	\$0	100.00%
CITY OF ORANGE (WATER DIVISION)	\$2,000	\$2,000	\$2,000	\$0	100.00%



Measure S Bond Program
Financial Report for February 2022
Budget vs Actuals by School and Budget Category with Vendor Detail

QSS Data thru 2/28/2022

	Budget	Contracted to Date	Expended to Date	Quarterly Expense Jan '22 - Mar '22	% Expended
ENVIRONMENTAL AUDIT INC	\$7,590	\$7,590	\$1,421	\$1,421	18.73%
	\$12,590	\$12,590	\$6,421	\$1,421	51.00%
4.03 Commissioning					
UNCOMMITTED	\$0	\$0	\$0	\$0	
P2S ENGINEERING INC	\$4,801	\$4,801	\$2,460	\$1,435	51.24%
	\$4,801	\$4,801	\$2,460	\$1,435	51.24%
4.05 DSA Review Fees					
UNCOMMITTED	\$0	\$0	\$0	\$0	
DIVISION OF STATE ARCHITECT	\$153,550	\$153,550	\$153,550	\$0	100.00%
	\$153,550	\$153,550	\$153,550	\$0	100.00%
4.06 Postage, Printing & Advertising					
UNCOMMITTED	\$0	\$0	\$0	\$0	
AMERICAN REPROGRAPHICS CO LLC	\$14,000	\$14,000	\$137	\$0	0.98%
	\$14,000	\$14,000	\$137	\$0	0.98%
4.09 Relocation					
UNCOMMITTED	\$450	\$0	\$0	\$0	
Beltmann Group, Inc.	\$6,851	\$6,851	\$6,519	\$0	95.15%
CDW GOVERNMENT INC	\$1,312	\$1,312	\$1,312	\$0	100.00%
ULINE INC	\$800	\$800	\$0	\$0	0.00%
	\$9,413	\$8,962	\$7,830	\$0	83.19%
4.11 Preliminary Testing (Hazmat, Topo, Geo, etc)					
UNCOMMITTED	\$50,977	\$0	\$0	\$0	
CANNON CORPORATION	\$50,000	\$50,000	\$35,076	\$0	70.15%
ENVIRONMENTAL NETWORK CORPORATION	\$15,380	\$15,380	\$6,350	\$0	41.29%
NINYO & MOORE	\$20,955	\$20,955	\$20,955	\$0	100.00%
	\$137,312	\$86,335	\$62,381	\$0	45.43%
Total 392-9520 Orange HS Phase II (DSA 04-120151)	\$2,676,410	\$2,501,447	\$1,467,567	\$46,208	54.83%
392-TBD Orange HS Science Center Unallocated Funds F22					
5. Unallocated Bond Funds					
5.04 Unallocated Bond Funds					
UNCOMMITTED	\$1,520,780	\$0	\$0	\$0	
	\$1,520,780	\$0	\$0	\$0	0.00%
Total 392-TBD Orange HS Science Center Unallocated Funds F22	\$1,520,780	\$0	\$0	\$0	0.00%
392-9520 Orange HS Unallocated Funds F21					
5. Program Reserve					
5.03 Interest Earned - Reserve					



Measure S Bond Program
Financial Report for February 2022
Budget vs Actuals by School and Budget Category with Vendor Detail

QSS Data thru 2/28/2022

	Budget	Contracted to Date	Expended to Date	Quarterly Expense Jan '22 - Mar '22	% Expended
UNCOMMITTED	\$1,500,631	\$0	\$0	\$0	
	\$1,500,631	\$0	\$0	\$0	0.00%
4. Construction Support Costs					
4.15 Miscellaneous Fees					
UNCOMMITTED	\$0	\$0	\$0	\$0	
OUSD COST OF INTEREST DISTRIBUTION	\$49,221	\$49,221	\$49,221	\$0	100.00%
	\$49,221	\$49,221	\$49,221	\$0	100.00%
Total 392-9520 Orange HS Unallocated Funds F21	\$1,549,853	\$49,221	\$49,221	\$0	3.18%
392-TBD Orange HS Unallocated Funds F22					
5. Unallocated Bond Funds					
5.04 Unallocated Bond Funds					
UNCOMMITTED	\$17,978,844	\$0	\$0	\$0	
	\$17,978,844	\$0	\$0	\$0	0.00%
Total 392-TBD Orange HS Unallocated Funds F22	\$17,978,844	\$0	\$0	\$0	0.00%
Orange High School	\$73,549,853	\$45,030,481	\$43,701,376	\$46,208	59.42%
Villa Park High School					
394-0000 Villa Park HS IP Surveillance Camera and Systems					
4. Construction Support Costs					
4.13 FF&E (Laboratory Tables and Chairs, other)					
UNCOMMITTED	\$0	\$0	\$0	\$0	
CDW GOVERNMENT INC	\$32,182	\$32,182	\$32,182	\$0	100.00%
DIGITAL NETWORKS GROUP INC (F/I IP Camera Software)	\$8,635	\$8,635	\$8,635	\$0	100.00%
INTER-PACIFIC INC	\$22,133	\$22,133	\$22,133	\$0	100.00%
	\$62,949	\$62,949	\$62,949	\$0	100.00%
Total 394-0000 Villa Park HS IP Surveillance Camera and Systems	\$62,949	\$62,949	\$62,949	\$0	100.00%
394-9520 Villa Park HS Science Center (DSA 04-117022)					
1. Design Cost					
1.01 Architect					
UNCOMMITTED	\$1	\$0	\$0	\$0	
DKS ASSOCIATES	\$85,690	\$85,690	\$80,657	\$0	94.13%
LIONAKIS	\$14,059	\$14,059	\$14,059	\$0	100.00%
LPA INC	\$2,637,692	\$2,637,692	\$2,455,819	\$37,172	93.10%



Measure S Bond Program
Financial Report for February 2022
Budget vs Actuals by School and Budget Category with Vendor Detail

QSS Data thru 2/28/2022

	Budget	Contracted to Date	Expended to Date	Quarterly Expense Jan '22 - Mar '22	% Expended
	\$2,737,442	\$2,737,441	\$2,550,535	\$37,172	93.17%
2. Construction Cost					
2.01 Construction					
UNCOMMITTED	\$0	\$0	\$0	\$0	
ANGELES CONTRACTOR, INC	\$20,658,097	\$20,658,097	\$19,293,971	\$1,767,665	93.40%
	\$20,658,098	\$20,658,097	\$19,293,971	\$1,767,665	93.40%
2.02 OFCI and Other Construction					
UNCOMMITTED	\$105,152	\$0	\$0	\$0	
ACCO ENGINEERED SYSTEMS INC	\$150,829	\$150,829	\$127,947	\$0	84.83%
AMERICAN REPROGRAPHICS CO LLC	\$1,026	\$1,026	\$0	\$0	0.00%
ANIXTER	\$5,092	\$5,092	\$0	\$0	0.00%
ARROW RESTAURANT EQUIPMENT	\$13,887	\$13,887	\$13,869	\$0	99.86%
CAROLINA BIOLOGICAL SUPPLY	\$24,213	\$24,213	\$0	\$0	0.00%
DEVELOPMENT GROUP INC	\$52,939	\$52,939	\$52,937	\$0	100.00%
FISHER SCIENCE EDUCATION	\$26,187	\$26,187	\$23,852	\$0	91.08%
FLINN SCIENTIFIC INC	\$12,364	\$12,364	\$12,364	\$0	100.00%
WW GRAINGER INC	\$3,043	\$3,043	\$1,148	\$0	37.74%
	\$394,733	\$289,581	\$232,117	\$0	58.80%
3. Program and Construction Management					
3.01 Program Management Fees					
UNCOMMITTED	\$120,084	\$0	\$0	\$0	
CORDOBA CORPORATION	\$0	\$0	\$0	\$0	
CUMMING CONSTRUCTION MGMT INC	\$945,697	\$1,044,109	\$901,475	\$57,205	95.32%
	\$1,065,781	\$1,044,109	\$901,475	\$57,205	84.58%
3.02 Construction Management Fees					
UNCOMMITTED	\$7,219	\$0	\$0	\$0	
CORDOBA CORPORATION	\$2,316,041	\$2,316,041	\$2,215,181	\$88,468	95.65%
	\$2,323,260	\$2,316,041	\$2,215,181	\$88,468	95.35%
4.02 Title, Environmental, Stormwater Management					
UNCOMMITTED	\$13,610	\$0	\$0	\$0	
CHICAGO TITLE COMPANY	\$750	\$750	\$750	\$0	100.00%
OUSD COST OF INTEREST DISTRIBUTION	\$1	\$1	\$1	\$0	100.00%
PLACEWORKS INC	\$73,237	\$73,237	\$73,237	\$0	100.00%
STATE WATER RESOURCES CONTROL BOARD (SWRCB)	\$484	\$484	\$484	\$0	100.00%
	\$88,082	\$74,471	\$74,471	\$0	84.55%
4.03 Commissioning					
UNCOMMITTED	\$9,722	\$0	\$0	\$0	



Measure S Bond Program
Financial Report for February 2022
Budget vs Actuals by School and Budget Category with Vendor Detail

QSS Data thru 2/28/2022

	Budget	Contracted to Date	Expended to Date	Quarterly Expense Jan '22 - Mar '22	% Expended
P2S ENGINEERING INC	\$31,635	\$31,635	\$26,688	\$0	84.36%
	\$41,357	\$31,635	\$26,688	\$0	64.53%
4.05 DSA Review Fees					
UNCOMMITTED	\$118,838	\$0	\$0	\$0	
DIVISION OF STATE ARCHITECT	\$289,250	\$289,250	\$289,250	\$0	100.00%
	\$408,088	\$289,250	\$289,250	\$0	70.88%
4.06 Postage, Printing & Advertising					
UNCOMMITTED	\$15,465	\$0	\$0	\$0	
AMERICAN REPROGRAPHICS CO LLC	\$16,315	\$16,315	\$12,670	\$0	77.66%
SOUTHERN CALIFORNIA NEWS GROUP	\$1,768	\$1,768	\$1,768	\$0	100.00%
	\$33,548	\$18,083	\$14,438	\$0	43.04%
4.07 DSA Inspection (IOR)					
UNCOMMITTED	\$1	\$0	\$0	\$0	
BPI INSPECTION SERVICE	\$606,215	\$606,215	\$505,749	\$0	83.43%
	\$606,216	\$606,215	\$505,749	\$0	83.43%
4.08 DSA Construction Phase Testing (LOR)					
UNCOMMITTED	\$0	\$0	\$0	\$0	
NINYO & MOORE	\$909,474	\$909,474	\$894,445	\$10,690	98.35%
	\$909,474	\$909,474	\$894,445	\$10,690	98.35%
4.09 Relocation					
UNCOMMITTED	\$15,958	\$0	\$0	\$0	
Beltmann Group, Inc.	\$7,080	\$7,080	\$851	\$0	12.02%
ULINE INC	\$1,602	\$1,602	\$702	\$0	43.83%
	\$24,640	\$8,682	\$1,553	\$0	6.30%
4.11 Preliminary Testing (Hazmat, Topo, Geo, etc)					
UNCOMMITTED	\$1,727	\$0	\$0	\$0	
CALIFORNIA GEOLOGICAL SURVEY (Geology and Seismology Review)	\$3,600	\$3,600	\$3,600	\$0	100.00%
ENVIRONMENTAL NETWORK CORPORATION	\$19,145	\$19,145	\$19,085	\$0	99.69%
LEIGHTON CONSULTING INC (Geotechnical Engineering)	\$20,000	\$20,000	\$16,549	\$0	82.75%
PSOMAS	\$27,000	\$27,000	\$21,034	\$0	77.90%
RMA GROUP (dba SITESCAN)	\$53,125	\$53,125	\$44,890	\$0	84.50%
SPECTRUM FIRE PROTECTION (Fire Hydrant Flow Test)	\$1,000	\$1,000	\$1,000	\$0	100.00%
	\$125,597	\$123,870	\$106,158	\$0	84.52%
4.12 Utility Connection Fees (Local Permits)					
UNCOMMITTED	\$78,154	\$0	\$0	\$0	
SOUTHERN CALIFORNIA EDISON	\$400	\$400	\$400	\$0	100.00%
STATE WATER RESOURCES CONTROL BOARD (SWRCB)	\$2,351	\$2,351	\$2,351	\$652	100.00%
	\$80,905	\$2,751	\$2,751	\$652	3.40%
4.13 FF&E (Laboratory Tables and Chairs, other)					
UNCOMMITTED	\$64,810	\$0	\$0	\$0	



Measure S Bond Program
Financial Report for February 2022
Budget vs Actuals by School and Budget Category with Vendor Detail

QSS Data thru 2/28/2022

	Budget	Contracted to Date	Expended to Date	Quarterly Expense Jan '22 - Mar '22	% Expended
AMS.NET	\$3,754	\$3,754	\$3,754	\$3,754	100.00%
CDW GOVERNMENT INC	\$60,309	\$60,309	\$26,181	\$0	43.41%
CULVER-NEWLIN INC	\$12,359	\$12,359	\$12,359	\$0	100.00%
FLINN SCIENTIFIC INC	\$4,162	\$4,162	\$4,162	\$0	100.00%
INTER-PACIFIC INC	\$7,325	\$7,325	\$7,325	\$0	100.00%
SIERRA SCHOOL EQUIPMENT COMPANY	\$502,500	\$502,500	\$502,500	\$259,444	100.00%
TURTLE STORAGE dba AMERICAN BICYCLE CO	\$6,871	\$6,871	\$6,871	\$0	100.00%
VWR INTERNATIONAL LLC	\$47,922	\$52,714	\$47,922	\$0	100.00%
	\$710,011	\$649,993	\$611,074	\$263,198	86.07%

5. Contingency

5.01 Construction Contingency

UNCOMMITTED	\$848,945	\$0	\$0	\$0	
	\$848,945	\$0	\$0	\$0	0.00%

5.02 Project Contingency

UNCOMMITTED	\$7,124,287	\$0	\$0	\$0	
	\$7,124,287	\$0	\$0	\$0	0.00%

Total 394-9520 Villa Park HS Science Center (DSA 04-117022)	\$38,180,464	\$29,759,693	\$27,719,855	\$2,225,050	72.60%
--	---------------------	---------------------	---------------------	--------------------	---------------

394-9520 Villa Park HS Interim Housing (DSA 04-116788)					
---	--	--	--	--	--

1. Design Cost

1.01 Architect

UNCOMMITTED	\$0	\$0	\$0	\$0	
LPA INC	\$70,000	\$70,000	\$70,000	\$0	100.00%
	\$70,000	\$70,000	\$70,000	\$0	100.00%

2. Construction Cost

2.01 Construction

UNCOMMITTED	\$0	\$0	\$0	\$0	
ANGELES CONTRACTOR, INC	\$1,074,556	\$1,074,556	\$1,074,556	\$0	100.00%
	\$1,074,556	\$1,074,556	\$1,074,556	\$0	100.00%

2.02 OFCI and Other Construction

UNCOMMITTED	\$0	\$0	\$0	\$0	
ACCO ENGINEERED SYSTEMS INC	\$36,527	\$36,527	\$36,527	\$0	100.00%
	\$36,527	\$36,527	\$36,527	\$0	100.00%

4. Construction Support Costs

4.01 Rental

UNCOMMITTED	\$1	\$0	\$0	\$0	
-------------	-----	-----	-----	-----	--



Measure S Bond Program
Financial Report for February 2022
Budget vs Actuals by School and Budget Category with Vendor Detail

QSS Data thru 2/28/2022

	Budget	Contracted to Date	Expended to Date	Quarterly Expense Jan '22 - Mar '22	% Expended
ELITE MODULAR LEASING & SALES INC	\$567,326	\$567,326	\$499,726	\$0	88.08%
	\$567,327	\$567,326	\$499,726	\$0	88.08%
4.05 DSA Review Fees					
UNCOMMITTED	\$0	\$0	\$0	\$0	
DIVISION OF STATE ARCHITECT	\$24,163	\$24,163	\$24,163	\$0	100.00%
	\$24,163	\$24,163	\$24,163	\$0	100.00%
4.07 DSA Inspection (IOR)					
UNCOMMITTED	\$0	\$0	\$0	\$0	
BPI INSPECTION SERVICE	\$43,265	\$43,265	\$43,265	\$0	100.00%
	\$43,265	\$43,265	\$43,265	\$0	100.00%
4.08 DSA Construction Phase Testing (LOR)					
UNCOMMITTED	\$0	\$0	\$0	\$0	
NINYO & MOORE	\$41,908	\$41,908	\$41,908	\$0	100.00%
	\$41,908	\$41,908	\$41,908	\$0	100.00%
4.09 Relocation					
UNCOMMITTED	\$0	\$0	\$0	\$0	
Beltmann Group, Inc.	\$4,640	\$4,640	\$4,640	\$0	100.00%
	\$4,640	\$4,640	\$4,640	\$0	100.00%
Total 394-9520 Villa Park HS Interim Housing (DSA 04-116788)	\$1,862,385	\$1,862,385	\$1,794,785	\$0	96.37%
394-9520 Villa Park HS Parking and Drop Off (DSA 04-118521)					
1. Design Cost					
1.01 Architect					
UNCOMMITTED	\$0	\$0	\$0	\$0	
LPA INC	\$107,305	\$107,305	\$59,506	\$0	55.45%
	\$107,305	\$107,305	\$59,506	\$0	55.45%
2. Construction Cost					
2.01 Construction					
UNCOMMITTED	\$0	\$0	\$0	\$0	
ANGELES CONTRACTOR, INC	\$2,750,000	\$2,750,000	\$2,594,435	\$0	94.34%
	\$2,750,000	\$2,750,000	\$2,594,435	\$0	94.34%
2.02 OFCI and Other Construction					
UNCOMMITTED	\$0	\$0	\$0	\$0	
WW GRAINGER INC	\$1,536	\$1,536	\$1,536	\$0	100.00%
	\$1,536	\$1,536	\$1,536	\$0	100.00%
4.05 DSA Review Fees					
UNCOMMITTED	\$3,386	\$0	\$0	\$0	



Measure S Bond Program
Financial Report for February 2022
Budget vs Actuals by School and Budget Category with Vendor Detail

QSS Data thru 2/28/2022

	Budget	Contracted to Date	Expended to Date	Quarterly Expense Jan '22 - Mar '22	% Expended
DIVISION OF STATE ARCHITECT	\$37,762	\$37,762	\$37,762	\$0	100.00%
	\$41,147	\$37,762	\$37,762	\$0	91.77%
4.06 Postage, Printing & Advertising					
UNCOMMITTED	\$0	\$0	\$0	\$0	
AMERICAN REPROGRAPHICS CO LLC	\$476	\$476	\$476	\$0	100.00%
	\$476	\$476	\$476	\$0	100.00%
4.07 DSA Inspection (IOR)					
UNCOMMITTED	\$0	\$0	\$0	\$0	
BPI INSPECTION SERVICE	\$44,880	\$44,880	\$40,264	\$0	89.71%
	\$44,880	\$44,880	\$40,264	\$0	89.71%
4.08 DSA Construction Phase Testing (LOR)					
UNCOMMITTED	\$0	\$0	\$0	\$0	
NINYO & MOORE	\$83,024	\$83,024	\$75,273	\$0	90.66%
	\$83,024	\$83,024	\$75,273	\$0	90.66%
Total 394-9520 Villa Park HS Parking and Drop Off (DSA 04-118521)	\$3,028,369	\$3,024,983	\$2,809,252	\$0	92.76%
394-9520 Villa Park HS Phase II (DSA 04-119694)					
1. Design Cost					
1.01 Architect					
UNCOMMITTED	\$0	\$0	\$0	\$0	
LPA INC	\$1,877,000	\$1,877,000	\$1,233,965	\$0	65.74%
	\$1,877,000	\$1,877,000	\$1,233,965	\$0	65.74%
3. Program and Construction Management					
3.01 Program Management Fees					
UNCOMMITTED	\$188,752	\$0	\$0	\$0	
CUMMING CONSTRUCTION MGMT INC	\$201,241	\$201,241	\$91,228	\$12,936	45.33%
	\$389,993	\$201,241	\$91,228	\$12,936	23.39%
3.02 Construction Management Fees					
UNCOMMITTED	\$0	\$0	\$0	\$0	
CORDOBA CORPORATION	\$506,441	\$506,441	\$97,188	\$12,298	19.19%
	\$506,441	\$506,441	\$97,188	\$12,298	19.19%
4. Construction Support Costs					
4.02 Title, Environmental, Stormwater Management					
UNCOMMITTED	\$0	\$0	\$0	\$0	
ENVIRONMENTAL AUDIT INC	\$36,880	\$36,880	\$1,595	\$1,595	4.32%
	\$36,880	\$36,880	\$1,595	\$1,595	4.32%
4.03 Commissioning					



Measure S Bond Program
Financial Report for February 2022
Budget vs Actuals by School and Budget Category with Vendor Detail

QSS Data thru 2/28/2022

	Budget	Contracted to Date	Expended to Date	Quarterly Expense Jan '22 - Mar '22	% Expended
UNCOMMITTED	\$0	\$0	\$0	\$0	
P2S ENGINEERING INC	\$8,429	\$8,429	\$3,850	\$1,540	45.68%
	\$8,429	\$8,429	\$3,850	\$1,540	45.68%
4.05 DSA Review Fees					
UNCOMMITTED	\$0	\$0	\$0	\$0	
DIVISION OF STATE ARCHITECT	\$188,750	\$188,750	\$188,750	\$0	100.00%
	\$188,750	\$188,750	\$188,750	\$0	100.00%
4.06 Postage, Printing & Advertising					
UNCOMMITTED	\$0	\$0	\$0	\$0	
AMERICAN REPROGRAPHICS CO LLC	\$8,000	\$8,000	\$0	\$0	0.00%
	\$8,000	\$8,000	\$0	\$0	0.00%
4.11 Preliminary Testing (Hazmat, Topo, Geo, etc)					
UNCOMMITTED	\$1,657	\$0	\$0	\$0	
ENVIRONMENTAL NETWORK CORPORATION	\$10,860	\$10,860	\$4,640	\$0	42.73%
NINYO & MOORE	\$58,576	\$58,576	\$53,223	\$0	90.86%
PSOMAS	\$26,550	\$26,550	\$26,550	\$0	100.00%
	\$97,643	\$95,986	\$84,413	\$0	86.45%
Total 394-9520 Villa Park HS Phase II (DSA 04-119694)	\$3,113,136	\$2,922,727	\$1,700,988	\$28,369	54.64%
394-TBD Villa Park HS Science Center Unallocated Funds F22					
5. Unallocated Bond Funds					
5.04 Unallocated Bond Funds					
UNCOMMITTED	\$1,192,646	\$0	\$0	\$0	
	\$1,192,646	\$0	\$0	\$0	0.00%
Total 394-TBD Villa Park HS Science Center Unallocated Funds F22	\$1,192,646	\$0	\$0	\$0	0.00%
394-9520 Villa Park Unallocated Funds F21					
4. Construction Support Costs					
4.15 Miscellaneous Fees					
UNCOMMITTED	\$0	\$0	\$0	\$0	
OUSD COST OF INTEREST DISTRIBUTION	\$48,488	\$48,488	\$48,488	\$0	100.00%
	\$48,488	\$48,488	\$48,488	\$0	100.00%
5. Program Reserve					
5.03 Interest Earned - Reserve					
UNCOMMITTED	\$690,921	\$0	\$0	\$0	
	\$690,921	\$0	\$0	\$0	0.00%



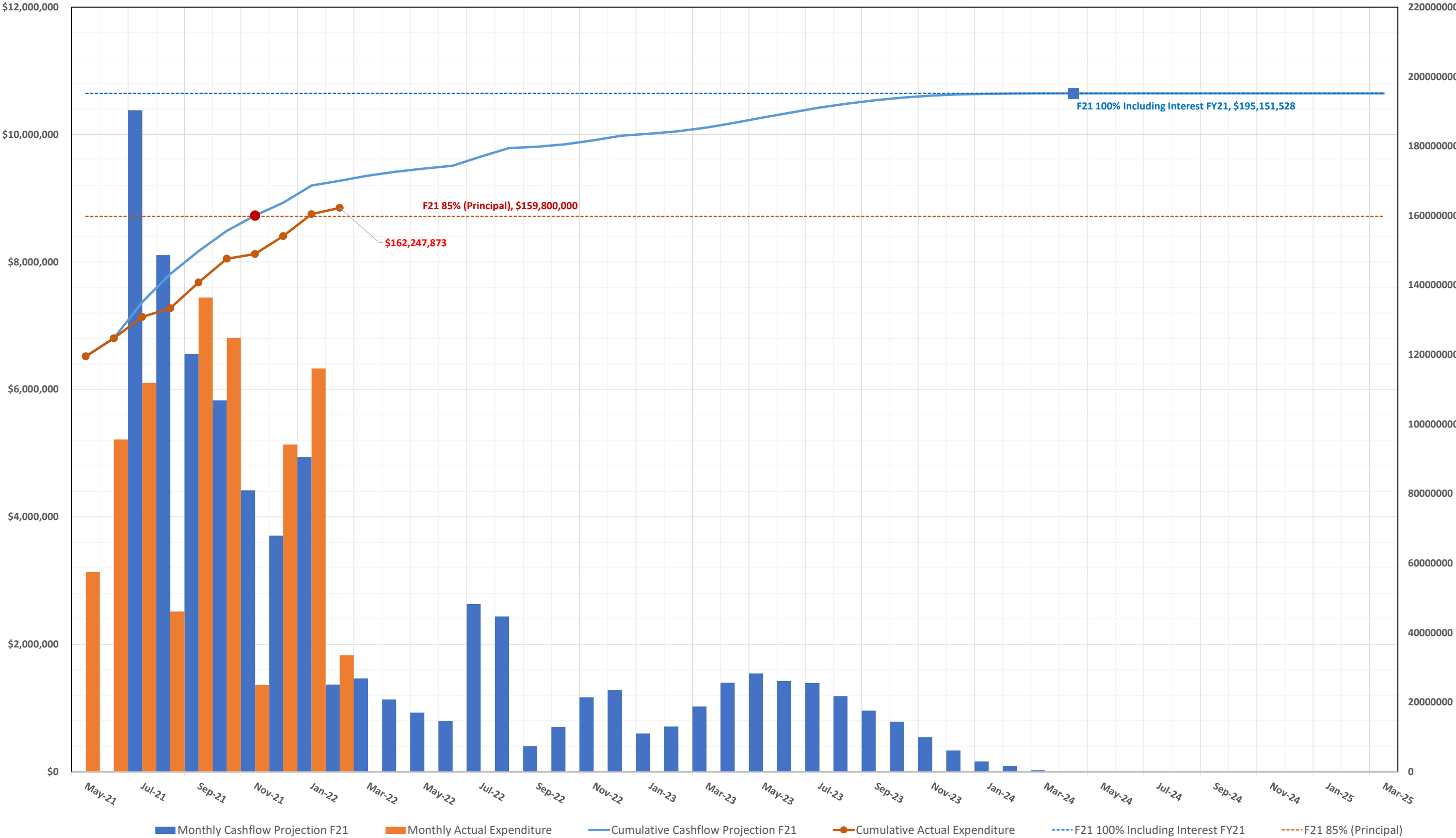
Measure S Bond Program
Financial Report for February 2022
Budget vs Actuals by School and Budget Category with Vendor Detail

QSS Data thru 2/28/2022

	Budget	Contracted to Date	Expended to Date	Quarterly Expense Jan '22 - Mar '22	% Expended
Total 394-9520 Villa Park Unallocated Funds F21	\$739,409	\$48,488	\$48,488	\$0	6.56%
394-TBD Villa Park Unallocated Funds F22					
5. Unallocated Bond Funds					
5.04 Unallocated Bond Funds					
UNCOMMITTED	\$25,538,287	\$0	\$0	\$0	
	\$25,538,287	\$0	\$0	\$0	0.00%
Total 394-TBD Villa Park Unallocated Funds F22	\$25,538,287	\$0	\$0	\$0	0.00%
Villa Park High School	\$73,717,646	\$37,681,226	\$34,136,317	\$2,253,418	46.31%

3.2 Cash Flow Projections

MEASURE S BOND PROGRAM - Series A 2018 CASH FLOW PROJECTION (Phase I and II)
Actual Costs thru February 28, 2022, NOT INCLUDING ACCRUALS PENDING PAYMENT
Fund 21 Planned Costs Projected as of June 30, 2021

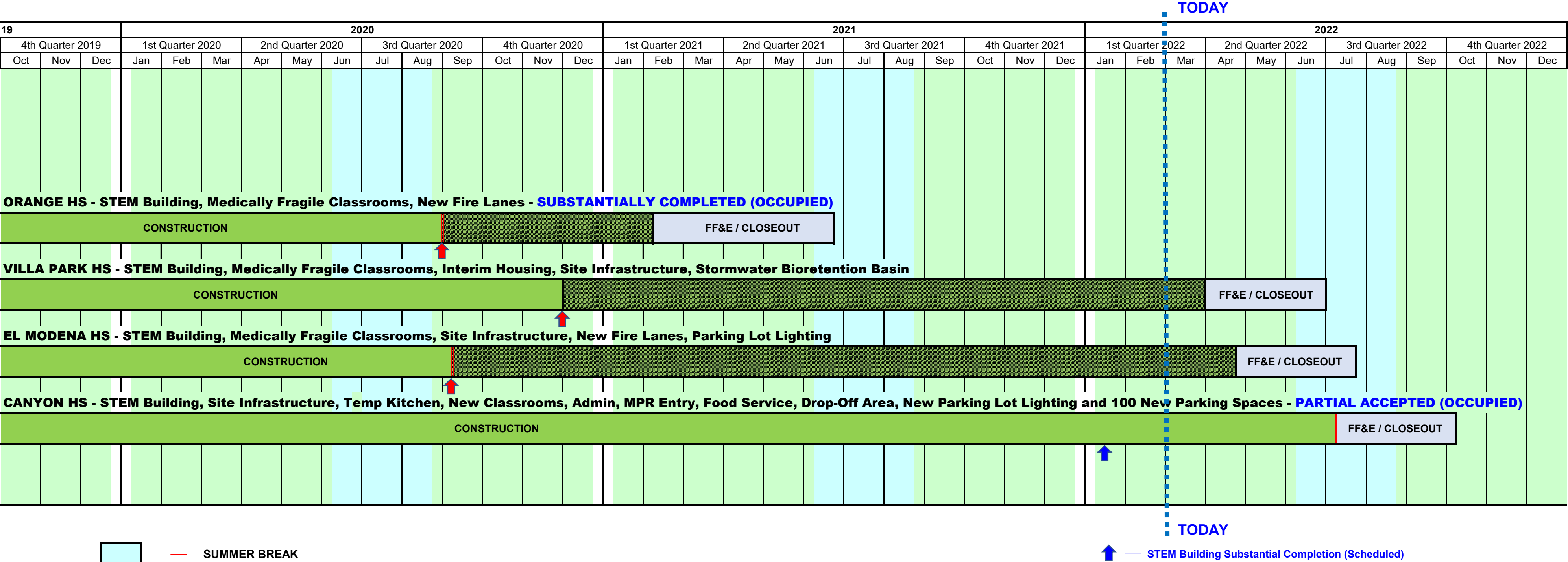


2016			2017												2018												2019									20		
4th Quarter 2016			1st Quarter 2017			2nd Quarter 2017			3rd Quarter 2017			4th Quarter 2017			1st Quarter 2018			2nd Quarter 2018			3rd Quarter 2018			4th Quarter 2018			1st Quarter 2019			2nd Quarter 2019			3rd Quarter 2019					
Oct	Nov	Dec	Jan	Feb	Mar	Apr	May	Jun	Jul	Aug	Sep	Oct	Nov	Dec	Jan	Feb	Mar	Apr	May	Jun	Jul	Aug	Sep	Oct	Nov	Dec	Jan	Feb	Mar	Apr	May	Jun	Jul	Aug	Sep			
			<div>BOND SALE SERIES A - \$188M</div>																																			
			ORANGE HS - Site Infrastructure, Move Relocatable Buildings, Bus Drop-Off, Restroom Renovation & Satellite Kitchen - COMPLETED																																			
			PROGRAM PHASE			DESIGN PHASE						DSA REVIEW & APPROVAL						BID & AWARD			INFRASTRUCTURE						SATELLITE KITCHEN CONSTRUCTION						FF&E/CLOSEOUT					
			ORANGE HS - STEM Building, Medically Fragile Classrooms, New Fire Lanes - SUBSTANTIALLY COMPLETED (OCCUPIED)																																			
			PROGRAM PHASE			DESIGN PHASE												DSA REVIEW & APPROVAL						BID & AWARD						CONSTRUCTION								
			VILLA PARK HS - STEM Building, Medically Fragile Classrooms, Interim Housing, Site Infrastructure, Stormwater Bioretention Basin																																			
			PROGRAM PHASE			DESIGN PHASE												DSA REVIEW & APPROVAL						BID & AWARD						CONSTRUCTION								
			EL MODENA HS - STEM Building, Medically Fragile Classrooms, Site Infrastructure, New Fire Lanes, Parking Lot Lighting																																			
			PROGRAM PHASE			DESIGN PHASE															DSA REVIEW & APPROVAL						BID & AWARD						CONSTRUCTION					
			CANYON HS - STEM Building, Site Infrastructure, Temporary Kitchen, New Classrooms, Administration, MPR Entry, Food Service, Drop-Off Circulation,																																			
PROGRAM PHASE			DESIGN PHASE																		DSA REVIEW & APPROVAL						BID & AWARD											

Page 42



MEASURE S BOND PROGRAM - PHASE I: SCHEDULE SUMMARY



- SUMMER BREAK
- There is a date under legal negotiation (see monthly report) that may extend this substantial completion date (*the dashed section is the extension under review*).
- There has been a Substantial Completion date change approved by the Board of Education (see *under specific project for the Change Order # referenced*).
- STEM Building Substantial Completion (Scheduled)



MEASURE S BOND PROGRAM - PHASE II: SCHEDULE SUMMARY

2018							2019												2020																																																	
2018	3rd Quarter 2018			4th Quarter 2018			1st Quarter 2019			2nd Quarter 2019			3rd Quarter 2019			4th Quarter 2019			1st Quarter 2020			2nd Quarter 2020			3rd Quarter 2020			4th Quarter 2020																																								
Jun	Jul	Aug	Sep	Oct	Nov	Dec	Jan	Feb	Mar	Apr	May	Jun	Jul	Aug	Sep	Oct	Nov	Dec	Jan	Feb	Mar	Apr	May	Jun	Jul	Aug	Sep	Oct	Nov	Dec																																						
																															ORANGE HS - Phase II: New two-story classroom/Admin bldg, Bldg 300 layout admin swing space, demo of existing Bldg 100/200.																																					
																															PROGRAM PHASE			CONCEPTUAL DESIGN												DESIGN PHASE																						
																															VILLA PARK HS - Phase II: New two-story, 18-classroom bldg, accessibility, and restroom upgrades to bldg 100/200, demo of bldg 500, and removal of 19 portable classrooms.																																					
																															PROGRAM PHASE			CONCEPTUAL DESIGN												DESIGN PHASE																						
																															EL MODENA HS - Phase II: Renovation of four (4) classroom bldgs (bldgs 200, 300, 400 and 500), library, bldg 800 (CTE), and expand Admin Bldg, new one-story classroom bldg and two bridges (2nd flr).																																					
																															PROGRAM PHASE			CONCEPTUAL DESIGN												DESIGN PHASE																						
																															CANYON HS - Phase II: Bldg (C) remove and replace HVAC systems, electrical systems, fire alarm, door & hardware, glazing, IT connectivity, insulate bldg, renovate restrooms, reconfigure lounge.																																					
																															PROGRAM PHASE						CONCEPTUAL DESIGN						DESIGN PHASE																									
																															PHASE 2 PROJECTS (as of August 2019 Monthly Report)																																					
PROGRAM PHASE						CONCEPTUAL / DESIGN PHASE												DSA REVIEW & APPROVAL																																																		

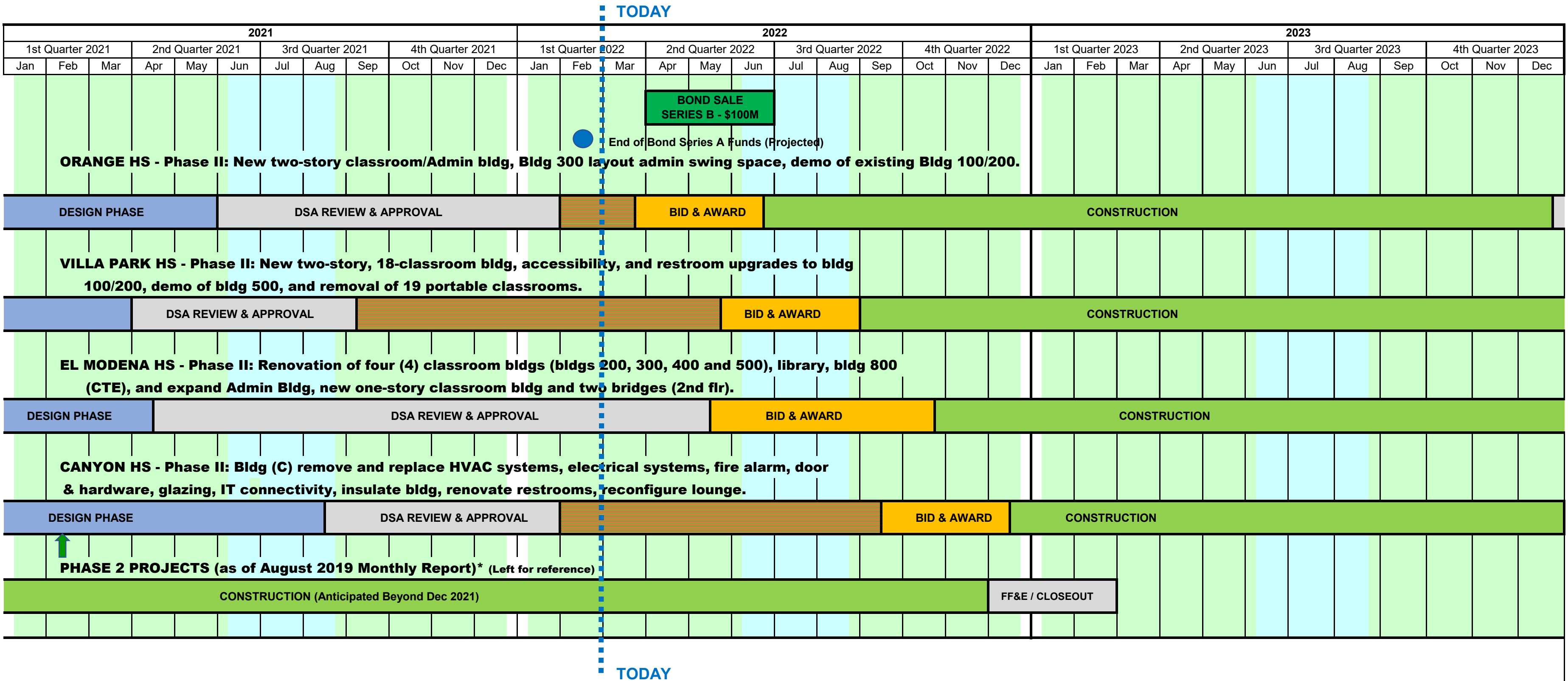


SUMMER BREAK

- Conceptual Design Board Approved 5/9/19 for Canyon HS
- Conceptual Design Board Approved 12/13/18
- Phase II Design & Budget Board Approved 7/25/19
- Orange HS
- El Modena HS
- Villa Park HS
- Orange HS
- El Modena HS
- Villa Park HS
- Canyon HS



MEASURE S BOND PROGRAM - PHASE II: SCHEDULE SUMMARY



- SUMMER BREAK
- EXTENDED CONSTRUCTION START
(for Phase II Bond Award)

- Phase II Design Document & Construction Estimate Board Approval (Completed)
- Orange HS - November 19, 2020 Board Meeting
- El Modena HS - October 15, 2020 Board Meeting
- Villa Park HS - August 13, 2020 Board Meeting
- Canyon HS - February 11, 2021 Board Meeting

Board of Education

Andrea Yamasaki, President

Kris Erickson, Vice-President

Ana Page, Clerk

John Ortega

Kathryn A. Moffat

Angie Schlueter-Rumsey

Rick Ledesma

Gunn Marie Hansen, Ph.D.

Superintendent

David A. Rivera

Assistant Superintendent/CBO

Business Services

Scott Harvey

Senior Executive Director

Administrative Services



Facilities & Planning Department

Measure S Bond Program

726 W. Collins Avenue

Orange, CA 92867

T: (714) 628-4500